

Sergison Bates architects <sup>LLP</sup>  
Existing upper ground floor

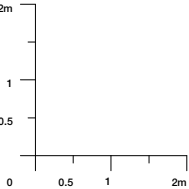
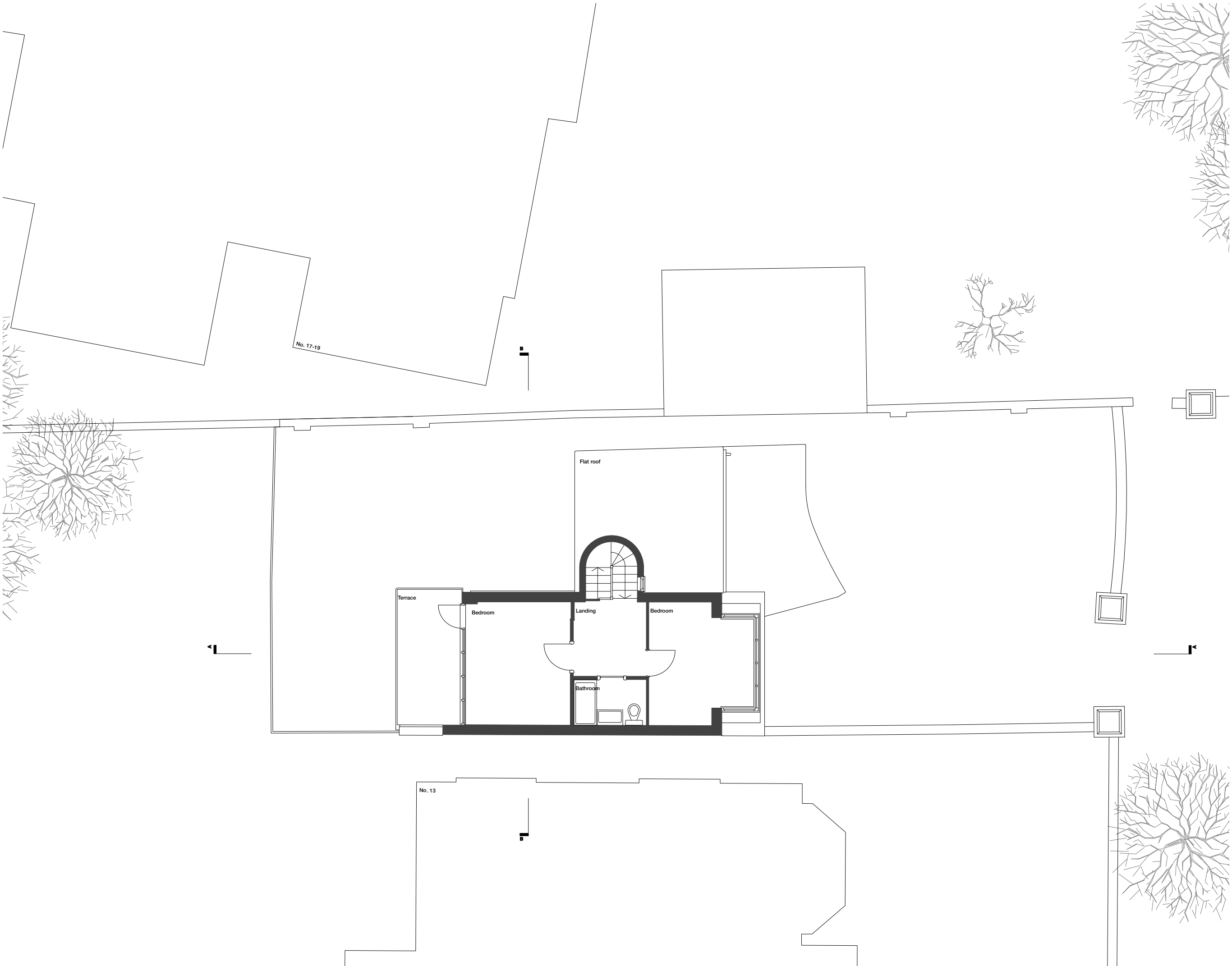
15 Lyndhurst Terrace, NW3  
Issued for planning

Architects	Date	Scale
Sergison Bates architects 34 Clerkenwell Close London EC1R 0AU United Kingdom	July 2016	1:100@A3
Tel +44 (0)20 7255 1564 e-mail studio @sergisonbates.co.uk		



305/4101

Do not scale from this drawing  
All dimensions to be verified on site  
Limited Liability Partnership Registered in England & Wales  
No. OC317501 Registered office as above



Sergison Bates architects <sup>LLP</sup>  
Existing first floor

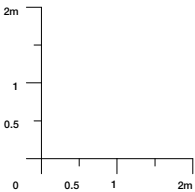
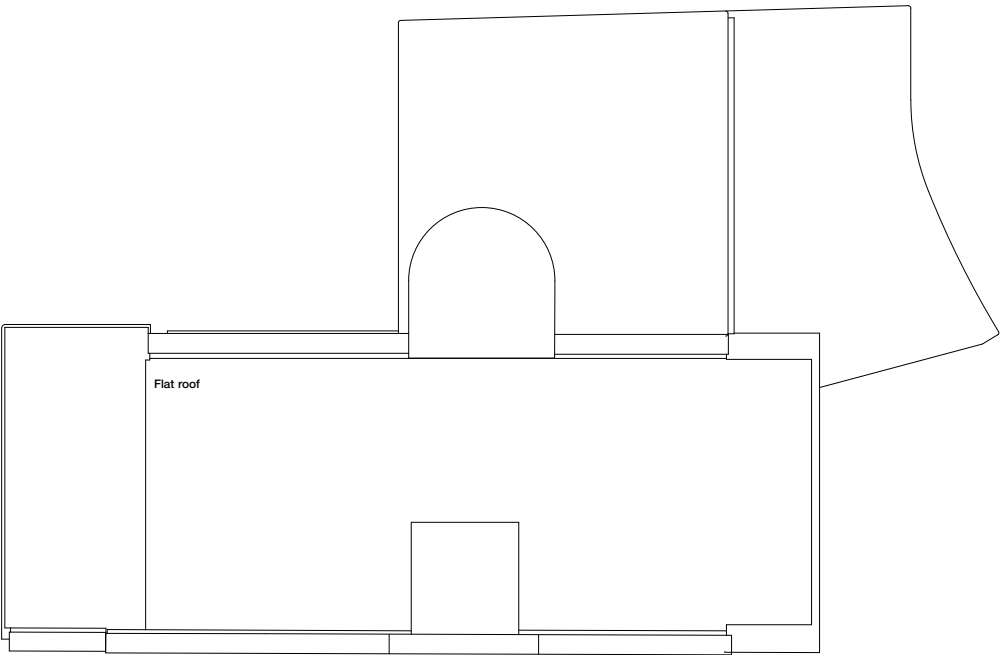
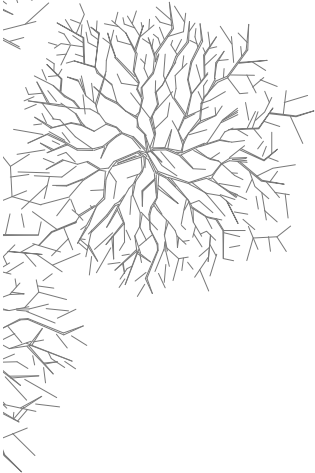
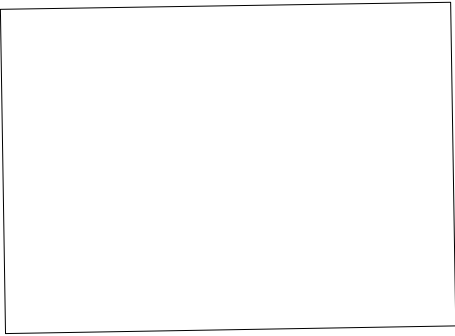
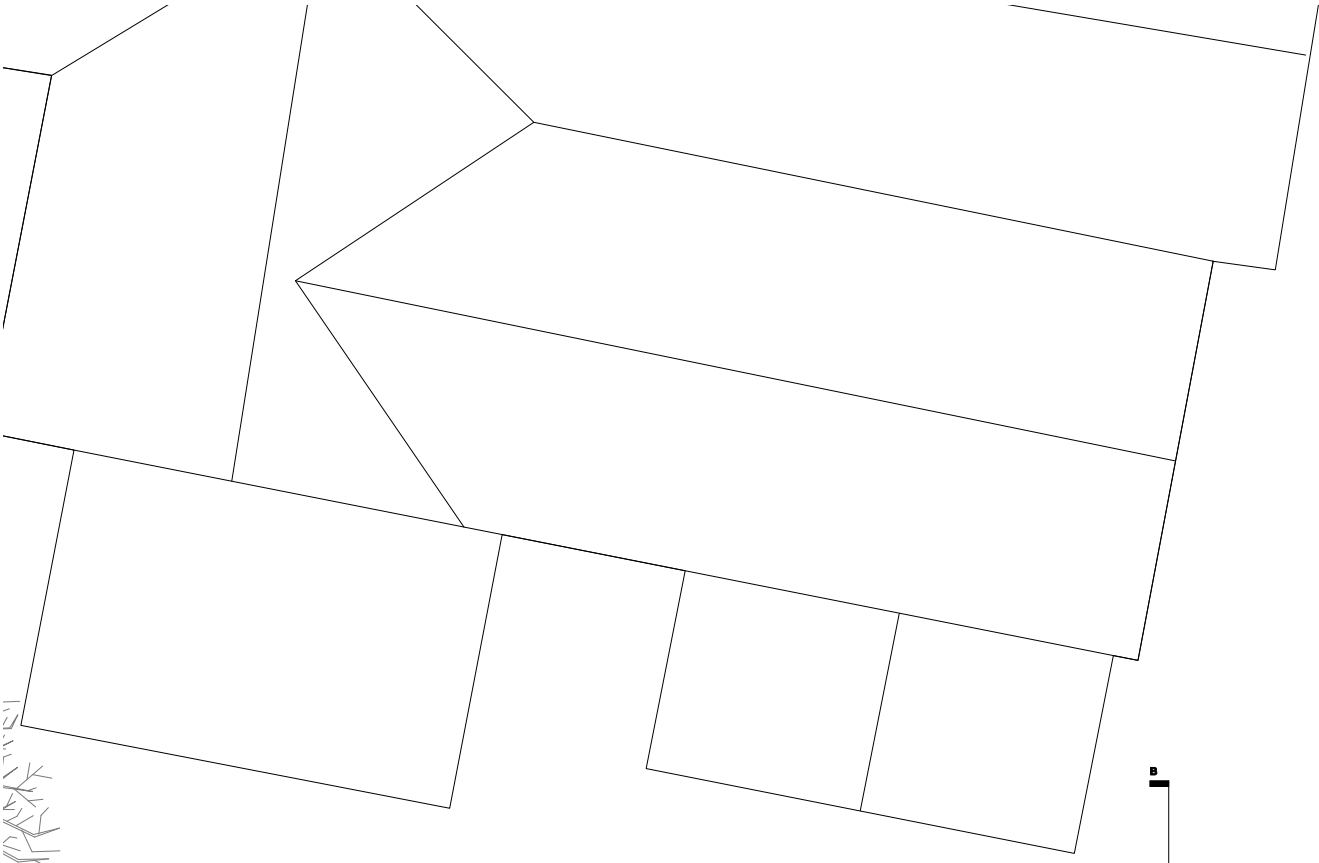
15 Lyndhurst Terrace, NW3  
Issued for planning

Architects	Date	Scale
Sergison Bates architects 34 Clerkenwell Close London EC1R 0AU United Kingdom	July 2016	1:100@A3
Tel +44 (0)20 7255 1564 e-mail studio @sergisonbates.co.uk		



305/4102

Do not scale from this drawing  
All dimensions to be verified on site  
Limited Liability Partnership Registered in England & Wales  
No. OC317501 Registered office as above



Sergison Bates architects LLP  
Existing roof plan

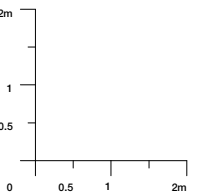
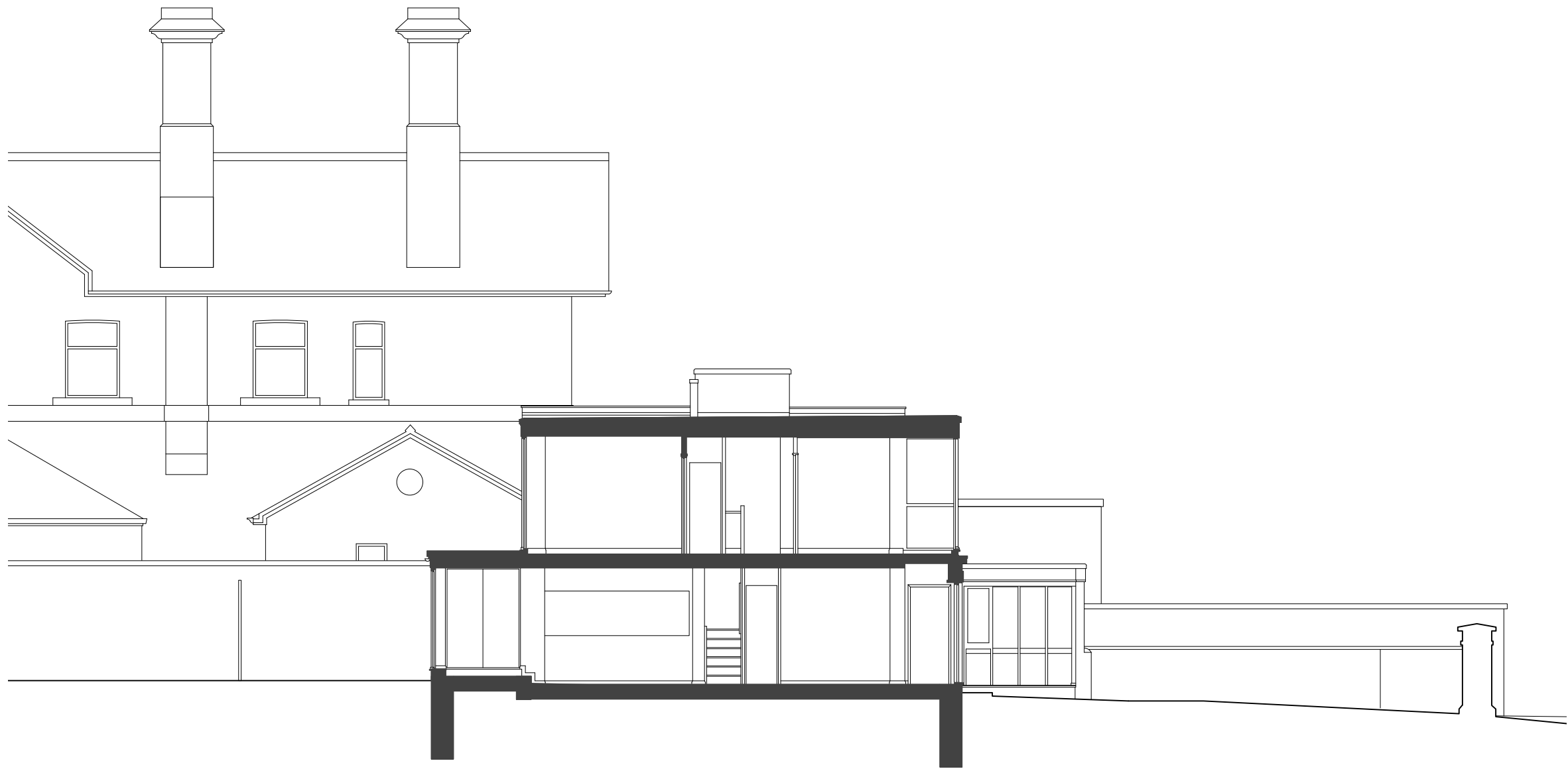
15 Lyndhurst Terrace, NW3  
Issued for planning

Architects	Date	Scale
Sergison Bates architects 34 Clerkenwell Close London EC1R 0AU United Kingdom	July 2016	1:100@A3
Tel +44 (0)20 7255 1564 e-mail studio @sergisonbates.co.uk		



305/4103

Do not scale from this drawing  
All dimensions to be verified on site  
Limited Liability Partnership Registered in England & Wales  
No. OC317501 Registered office as above

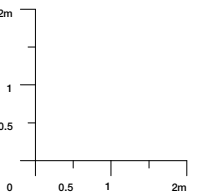


Sergison Bates architects <sup>LLP</sup>  
Long section AA

15 Lyndhurst Terrace, NW3  
Issued for planning

Architects	Date	Scale
Sergison Bates architects 34 Clerkenwell Close London EC1R 0AU United Kingdom	July 2016	1:100@A3
Tel +44 (0)20 7255 1564 e-mail studio @sergisonbates.co.uk		

305/4150



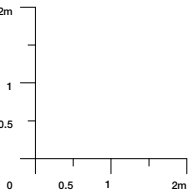
Sergison Bates architects <sup>LLP</sup>  
Short section BB

15 Lyndhurst Terrace, NW3  
Issued for planning

Architects	Date	Scale
Sergison Bates architects 34 Clerkenwell Close London EC1R 0AU United Kingdom	July 2016	1:100@A3
Tel +44 (0)20 7255 1564 e-mail studio @sergisonbates.co.uk		

305/4151

Do not scale from this drawing  
All dimensions to be verified on site  
Limited Liability Partnership Registered in England & Wales  
No. OC317501 Registered office as above



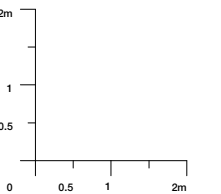
Sergison Bates architects <sup>LLP</sup>  
East street elevation

15 Lyndhurst Terrace, NW3  
Issued for planning

Architects	Date	Scale
Sergison Bates architects 34 Clerkenwell Close London EC1R 0AU United Kingdom	July 2016	1:100@A3
Tel +44 (0)20 7255 1564 e-mail studio @sergisonbates.co.uk		

305/4170

Do not scale from this drawing  
All dimensions to be verified on site  
Limited Liability Partnership Registered in England & Wales  
No. OC317501 Registered office as above



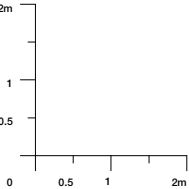
Sergison Bates architects <sup>LLP</sup>  
West garden elevation

15 Lyndhurst Terrace, NW3  
Issued for planning

Architects	Date	Scale
Sergison Bates architects 34 Clerkenwell Close London EC1R 0AU United Kingdom	July 2016	1:100@A3
Tel +44 (0)20 7255 1564 e-mail studio @sergisonbates.co.uk		

305/4171

Do not scale from this drawing  
All dimensions to be verified on site  
Limited Liability Partnership Registered in England & Wales  
No. OC317501 Registered office as above



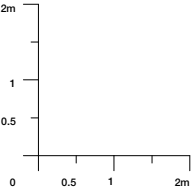
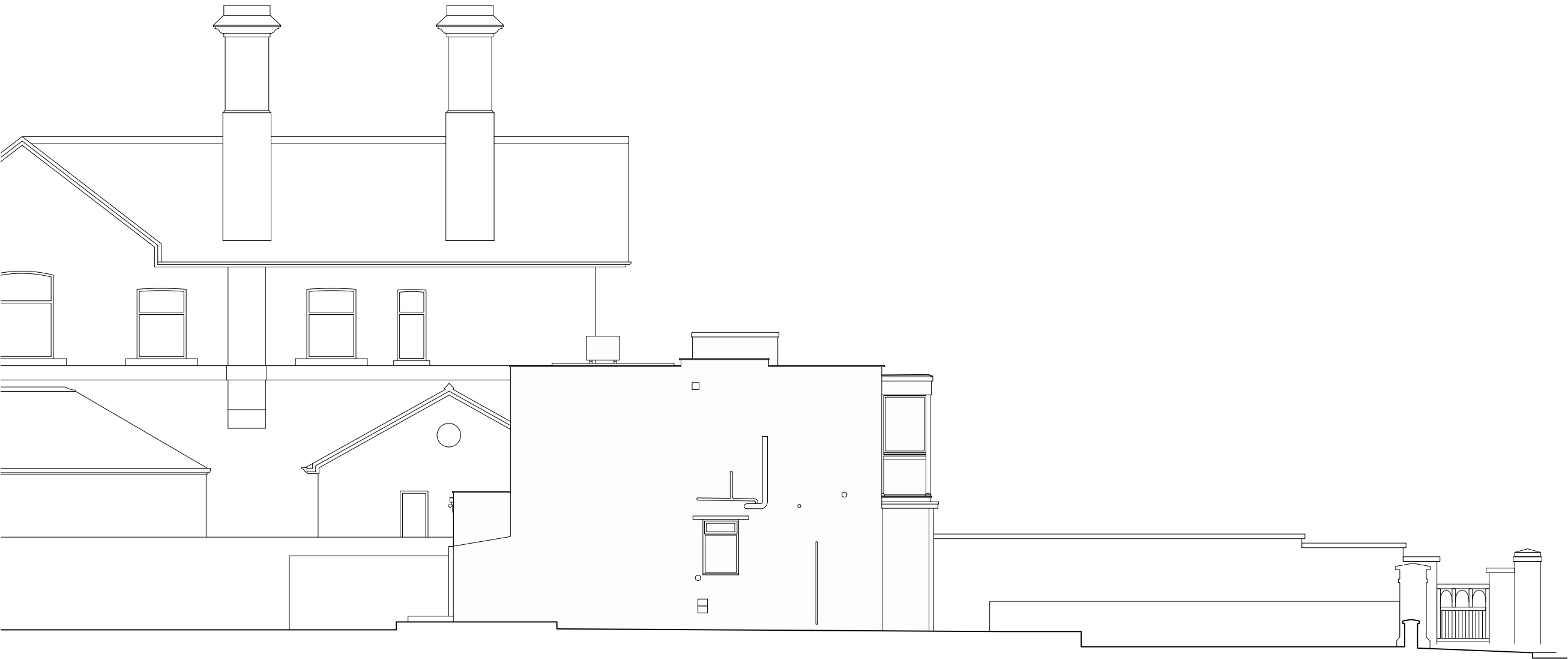
Sergison Bates architects <sup>LLP</sup>  
North elevation

15 Lyndhurst Terrace, NW3  
Issued for planning

Architects	Date	Scale
Sergison Bates architects 34 Clerkenwell Close London EC1R 0AU United Kingdom	July 2016	1:100@A3
Tel +44 (0)20 7255 1564 e-mail studio @sergisonbates.co.uk		

305/4172





Sergison Bates architects <sup>LLP</sup>  
South elevation

15 Lyndhurst Terrace, NW3  
Issued for planning

Architects	Date	Scale
Sergison Bates architects 34 Clerkenwell Close London EC1R 0AU United Kingdom	July 2016	1:100@A3
Tel +44 (0)20 7255 1564 e-mail studio @sergisonbates.co.uk		

305/4173

Do not scale from this drawing  
All dimensions to be verified on site  
Limited Liability Partnership Registered in England & Wales  
No. OC317501 Registered office as above