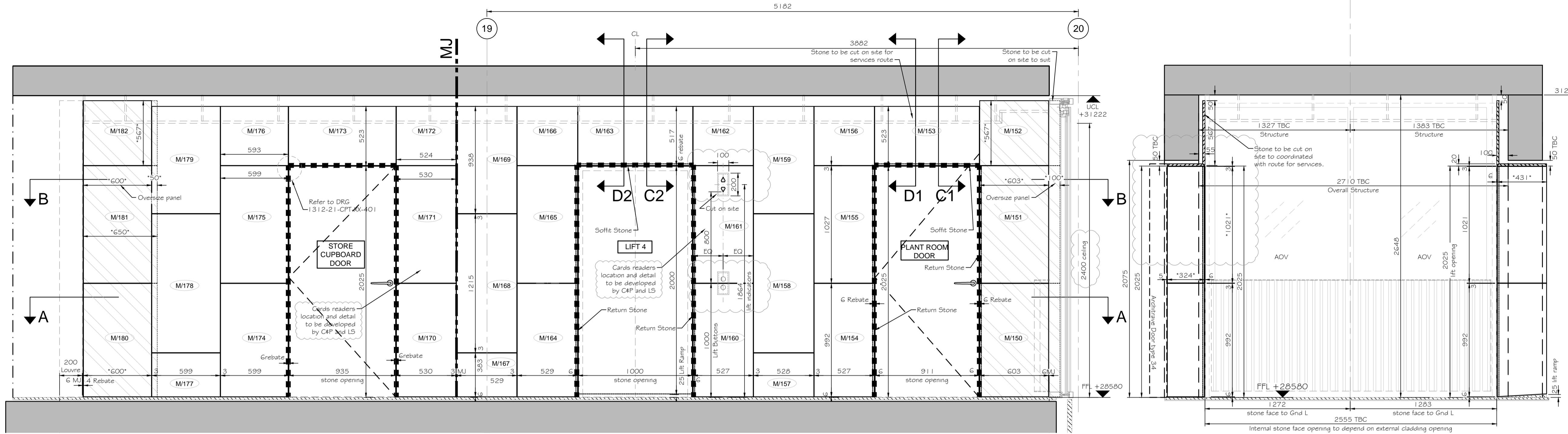
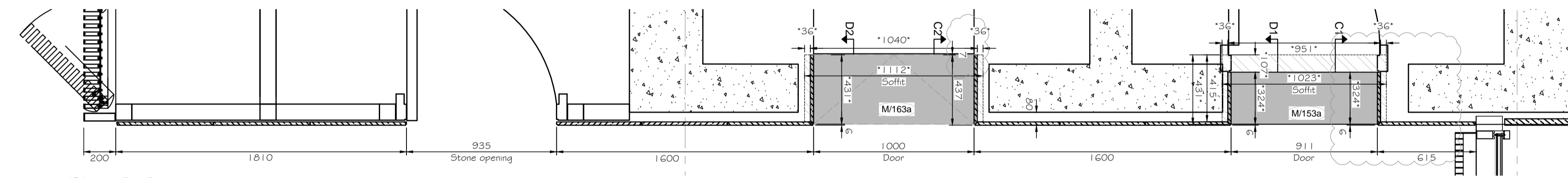


SOUTH CORE - MEZZANINE FLOOR - LIFT LOBBY - PART 2 STONE LAYOUT - 1:20

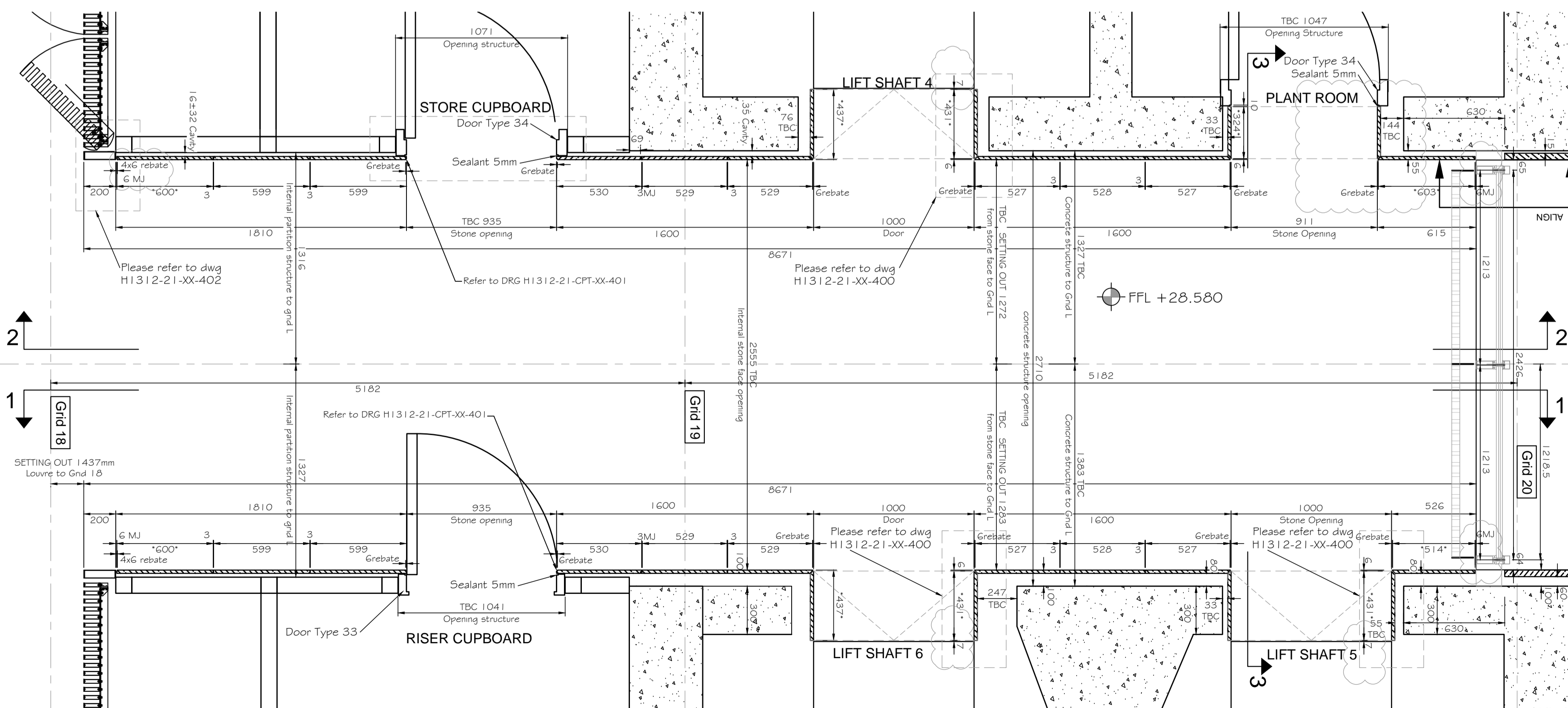


Elevation 2

Section 3-3



Plan B-B

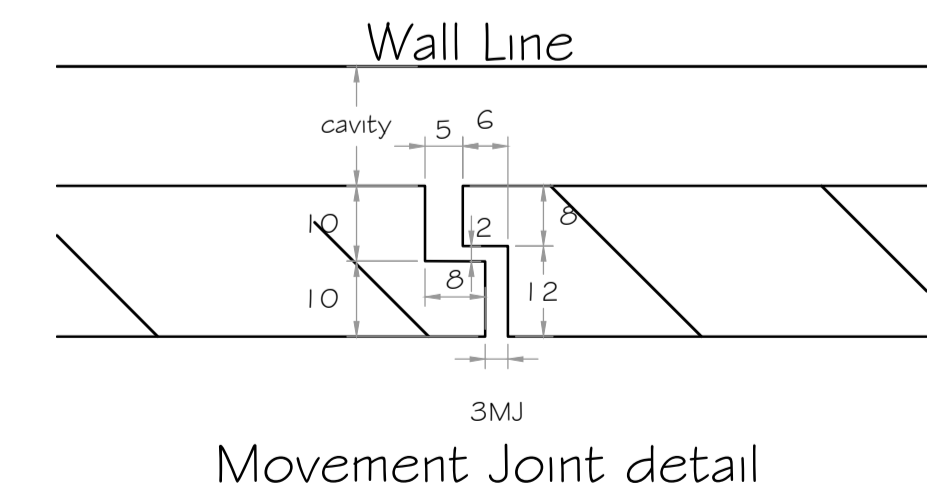


Plan A-A

Read in conjunction with stone layout drawing H1312-21-CP-M-107 & H1312-21-CP-XX-716 & series from H1312-21-CP-XX-693 to 699.

Note * on the dimension : Stone will be oversized to be cut to suit on site

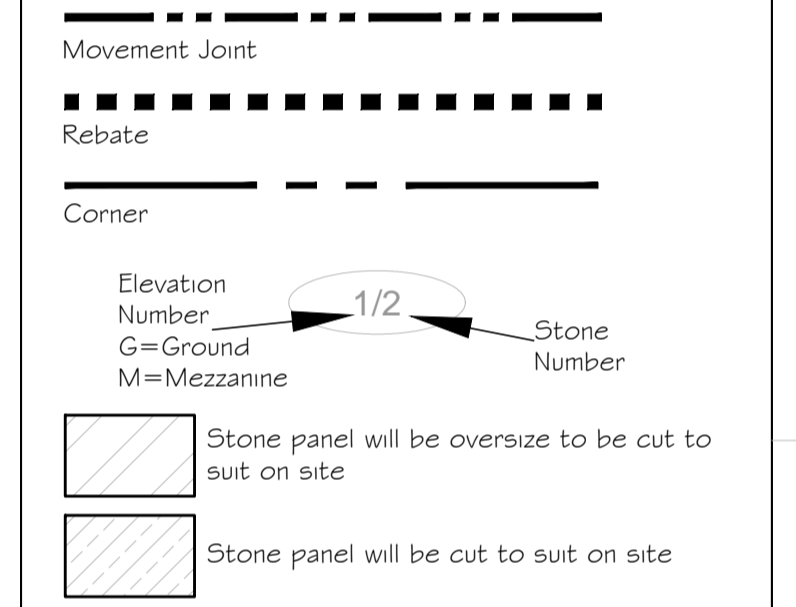
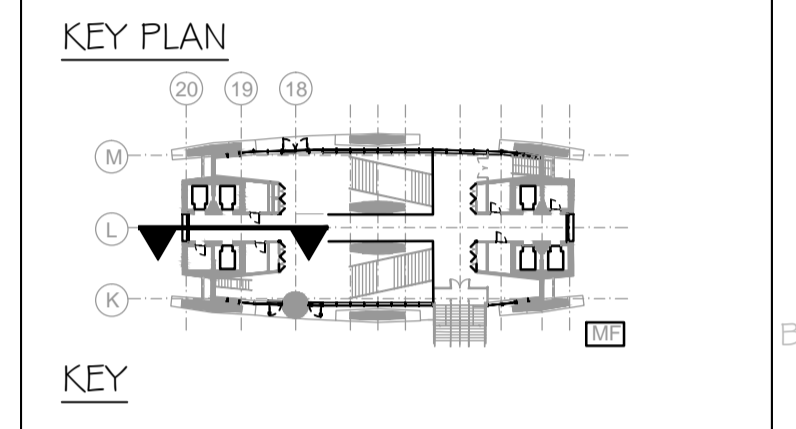
Paye Note:
- coordinate panel & fixing with services.
- Sprinkler routes to be coordinated with Architect Note 13/04/2017:
-Info from LS required to coordinate M+E including the side wall sprinkler routes.



- NOTES
1. No dimensions to be scaled from this drawing.
 2. All dimensions to be checked on site.
 3. The designer must be notified where any discrepancy occurs between specification and drawing.
 4. COPYRIGHT: The contents of this drawing may not be reproduced in whole or part without the written permission of HarrisonGoldman.

Based on CONRAN+PARTNERS drawings:
2332-(42)-071_C6, 2332-(24)-159_C3,
2332-(24)-160_C3, 2332-(25)-707_C1,
2332-(25)-720_C3, 2332-(25)-520_C1,
2332-(25)-521_C1, 2332-(25)-522_C1,
2332-(25)-523_C1, 2332-(25)-525_C1,
2332-(26)-021_C1, (2332-(21)-502_C3,
2332-(42)-022_C1, 2332-(76)-005_C2,
2332-(24)-102_C1, 2332-(43)-100_C1
LI0650A_C2, H517110A_C3, .
Based on FLOWMAN CRAVEN drawings:
30879-00GF-01_E, 30879-0GMF-01_E
30879-00GE-01_D
Based on OTIS & Grontrij drawings:
F601-66-CPT-XX-211_F;
F601-66-CPT-XX-311/F; 106610/TG102_T2
Based on Glassolutions & d+b-facades drawings:
D803-21-CPT-00-105, D803-21-CPT-00-207,
D804-21-CPT-00-113_D

Note:
All panels to be 20mm thick unless noted otherwise.
ALL STRUCTURAL WALL, BEAMS, COLUMNS AND PARTY WALLS, REQUIRE SITE VERIFICATION.



Rev	Revision details	Drawn by	Check	Date
03	Updated with the Architect's comments: 7mm gap to lift architrave and Stone panels; Notes added; lift indicator amended; DRGs refer updated; ceiling level changed; Section 3-3 changed; PSAL removed; Architect's notes added.	MKS	MG	28:04:17
02	DRGs refer added; Movement Joint changed from 5mm to 3mm; Panels changed size and detail added; notes changed; Rebate deleted near window and panels oversized dimensions; Rebate changed near louvre; Window updated; Lift bottom & light face plates added; soffit panels oversized.	MKS	MG	31:03:16
01	Updated with the Architect's comments: Internal Lining aligned with external cladding; Reduced cavity to fitting; Panels, return stones and soffit changed width; PSAL added; Main heights reduced; lift ramps added; internal birth mouth joints changed to 6x6mm; Window coordinated with survey; Rebate in panels near window; opening stones faces changed; references drawing updated; Key note added; Layout changed; Nos added.	CLJ	MG	08:02:16
00	FIRST ISSUE	CLJ	MG	10:11:16

Client: **Almacantar**
Contractor: **Multiplex**
HARRISON GOLDMAN
DESIGN CONSULTANTS
Airport House
Purley Way
Croydon - Surrey CR0 0XZ
Tel: 020 8683 4777
e-mail: enquiries@harrisongoldman.com

HG Drawing No.: C5527-HG-S221

Project: **Centre Point London**
Drawing Title: **Stone Layout part 2 - Lift Lobby Mezzanine Floor - South Core**

Status: Construction	Date: 10/11/2016	Scale: 1:20@A1
Job No.: 658	Drawn by: CLJ	Checked: MG
Origin	CISFB	Building Code
H1312	21	CPT
Code	M	106
Level	03	