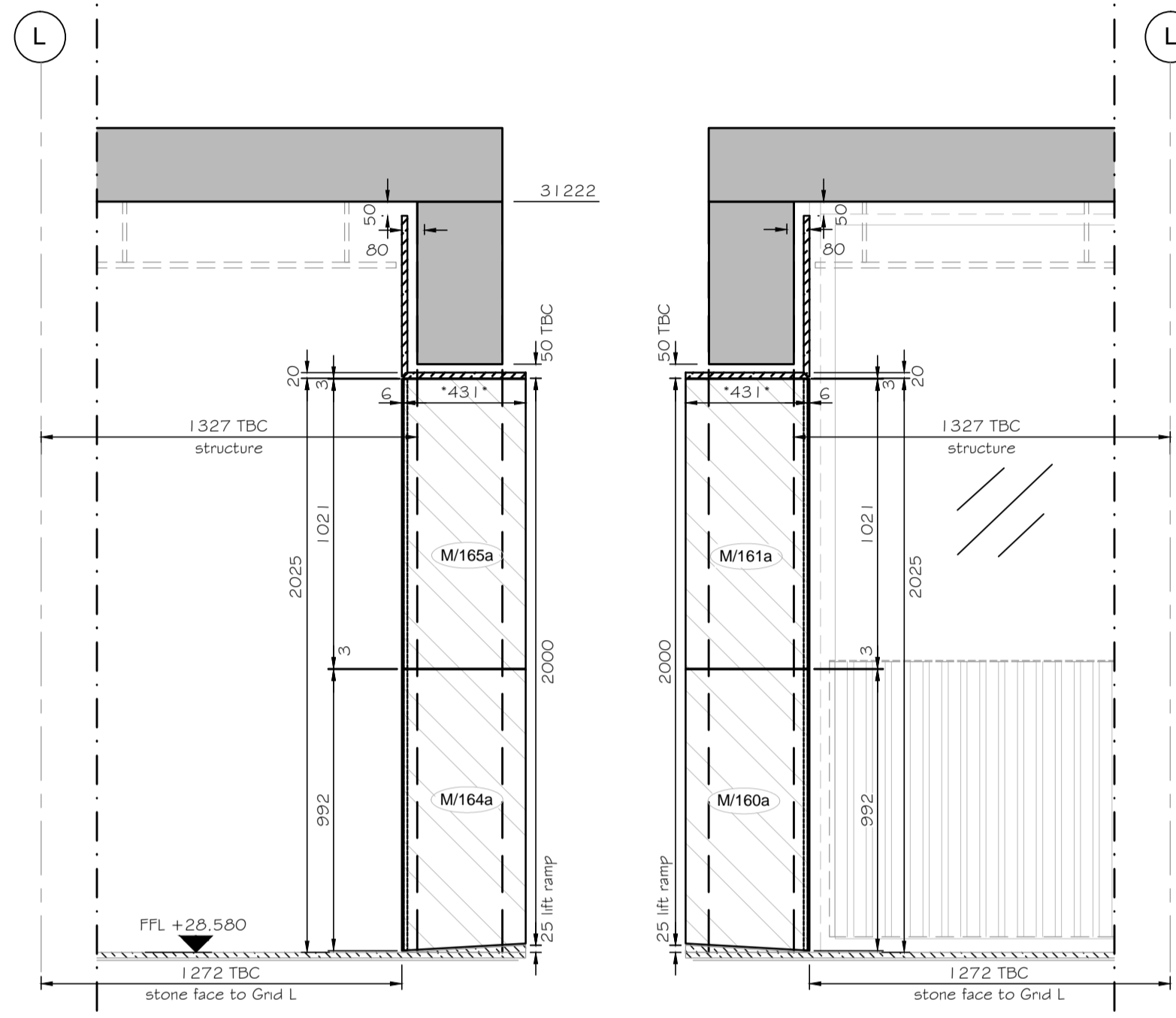
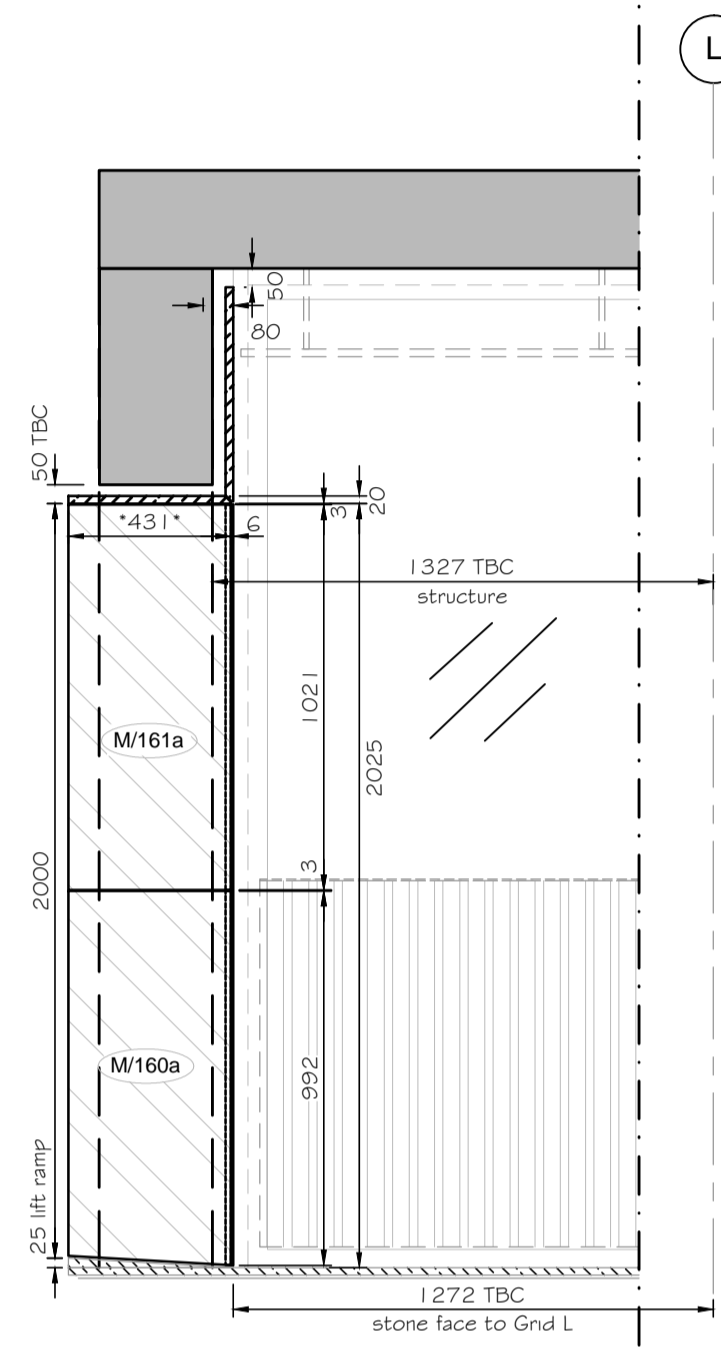


SOUTH CORE - MEZZANINE FLOOR - RETURN STONE & SOFFIT LAYOUT - LIFT LOBBY - PART 2

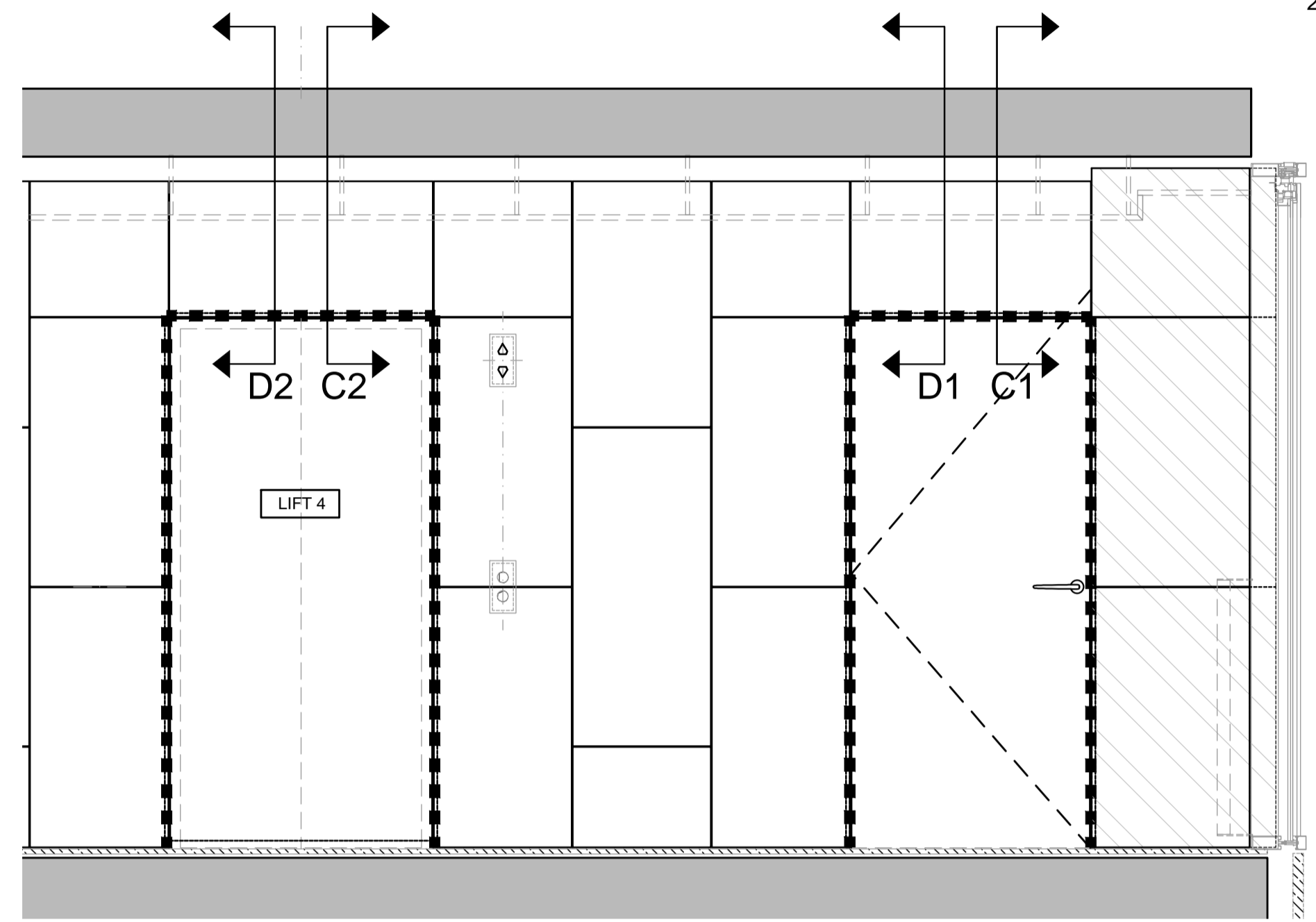
STONE LAYOUT - 1:20



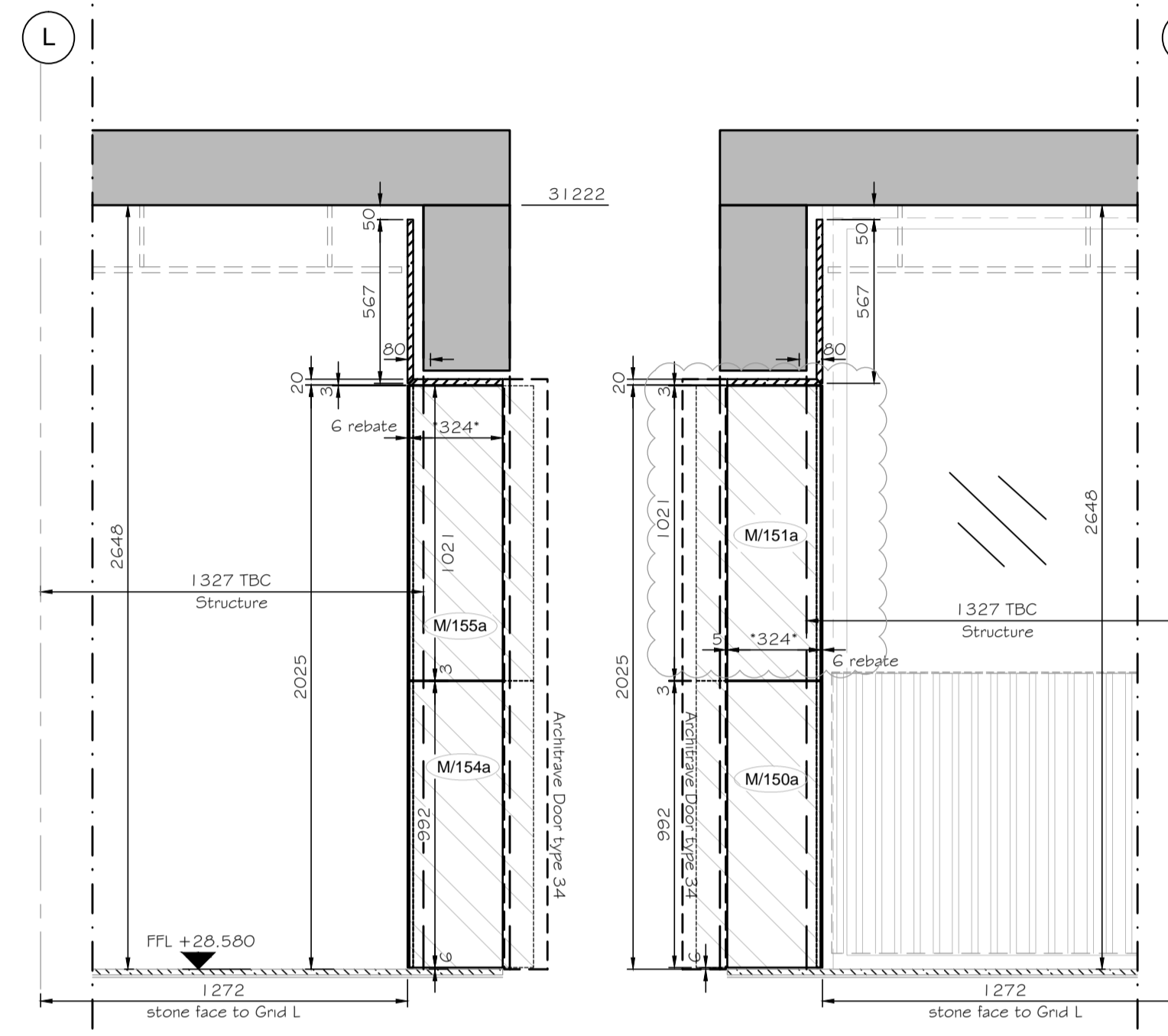
Elevation D2
Stone Return
Lift



Elevation C2
Stone Return
Lift

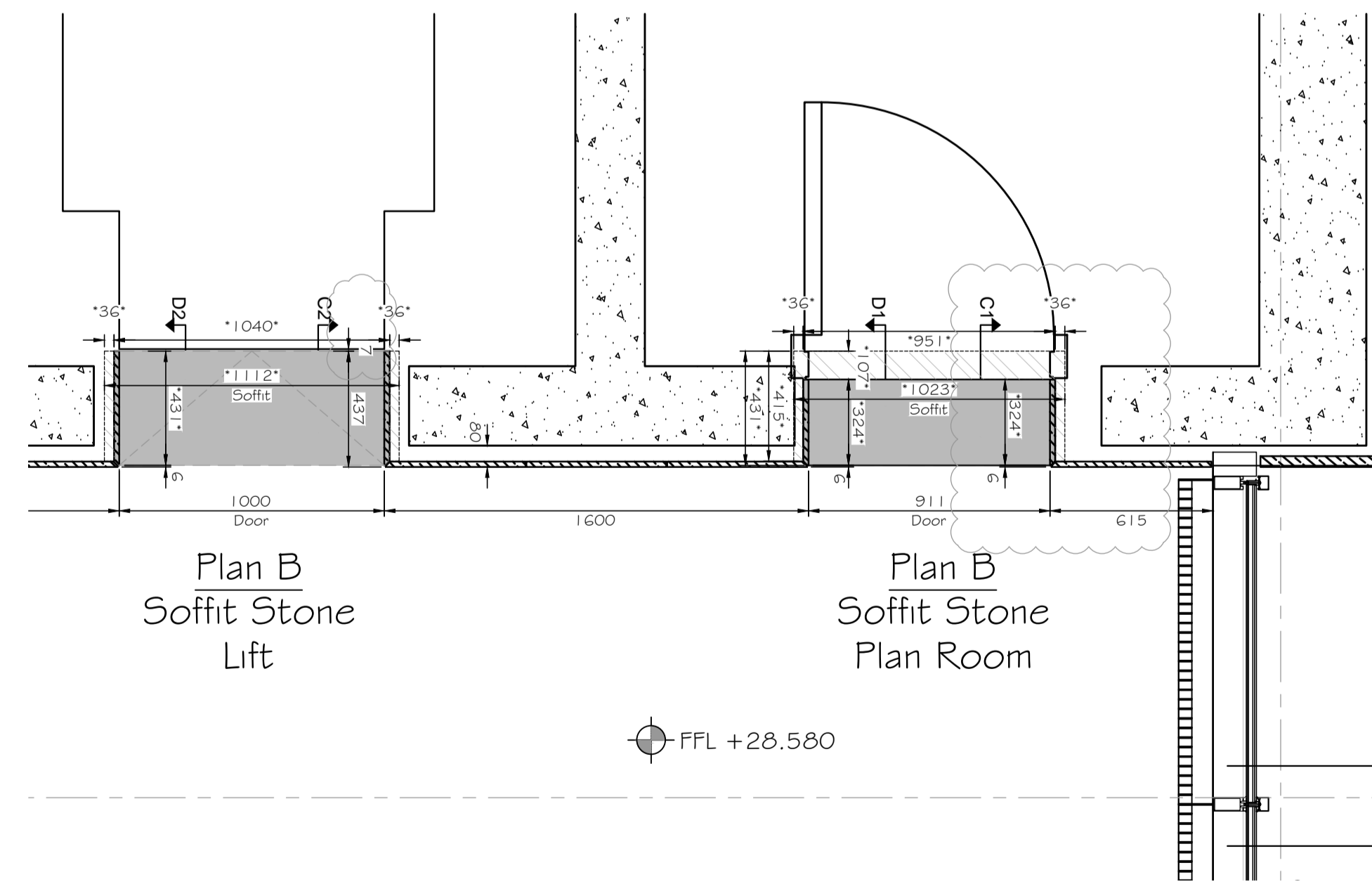


Extract Elevation 2



Elevation D1
Stone Return
Plant Room

Elevation C1
Stone Return
Plant Room



Extract Plan B-B

Read in conjunction with stone layout drawing H1312-21-CP-M-106# H1312-21-CP-XX-716 & series from H1312-21-CP-XX-693 to 699.

Note * on the dimension :
Stone will be oversized to be cut to suit on site

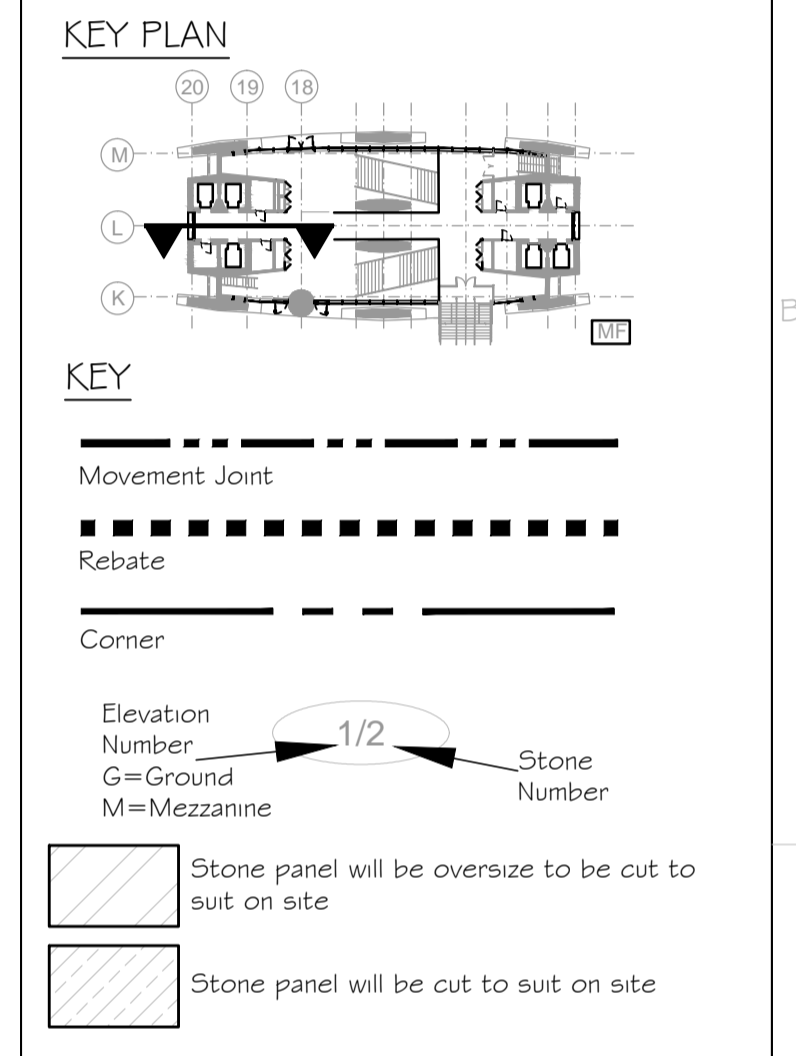
NOTES

- No dimensions to be scaled from this drawing.
- All dimensions to be checked on site.
- The designer must be notified where any discrepancy occurs between specification and drawing.
- COPYRIGHT: The contents of this drawing may not be reproduced in whole or part without the written permission of HarrisonGoldman.

Based on CONRAN+PARTNERS drawings:
2332-(42)-071_C6, 2332-(24)-159_C3,
2332-(24)-160_C3, 2332-(25)-707_C1,
2332-(25)-720_C3, 2332-(25)-520_C1,
2332-(25)-521_C1, 2332-(25)-522_C1,
2332-(25)-523_C1, 2332-(25)-525_C1,
2332-(76)-021_C1, 2332-(21)-502_C3,
2332-(42)-022_C1, 2332-(76)-005_C2,
2332-(24)-102_C1, 2332-(43)-100_C1
L10/650A_C2; H51/110A_C3.
Based on FLOWMAN CRAVEN drawings:
30879-00GF-01_E, 30879-0GMF-01_E
30879-00GE-01_D
Based on OT15 & Gronomy drawings:
F601-66-CPT-XX-211_F;
F601-66-CPT-XX-311_F; 106610/T/6102_12/
Based on Glassolutions & d+b facades drawings:
D803-21-CPT-00-105, D803-21-CPT-00-207,
D804-21-CPT-00-113_D

Note:
All panels to be 20mm thick unless noted otherwise.

ALL STRUCTURAL WALL, BEAMS, COLUMNS AND PARTY WALLS, REQUIRE SITE VERIFICATION.



03	Updated with the Architect's comments: 7mm gap to lift architrave and Stone; Drgs refer updated; Remote of FSAL removed from panel.	MKS	MG	28:04:17
02	Drgs refer added; Soffit panels oversized; Panel for remote of FSAL changed; noted added.	MKS	MG	31:03:17
01	Updated with the Architect's comments: Internal Lining aligned with external cladding; Reduced cavity to fixing; Panels, return stones and soffit changed width; FSAL added; Main heights reduced; lift ramps added; internal birth mouth paints changed to 6x6mm; Window coordinated with survey; Rebate in panels near window; opening stones faces changed; references drawing updated; Key note added; Layout changed; Nos added.	CLJ	MG	08:02:16
00	FIRST ISSUE	CLJ	MG	10:11:16
Rev	Revision details	Drawn by	Check	Data

Client: **Almacantar**

Contractor: **Multiplex**

HARRISON GOLDMAN
DESIGN CONSULTANTS
Airport House
Purley Way
Croydon - Surrey CR0 0XZ
Tel: 020 8683 4777
e-mail: enquiries@harrisongoldman.com

HG Drawing No.: C5527-HG-S222

Project: **Centre Point London**

Drawing Title: **Stone Return & Soffit - part 2
Lift Lobby - MF - South Core**

Status: Construction	Date: 10/11/2016	Scale: 1:20@A1			
Job No.: 658	Drawn by: CLJ	Checked: MG			
Origin	CISFB Code	Building Code	Level	Series	Revision
H1312	21	CPT	M	107	03

