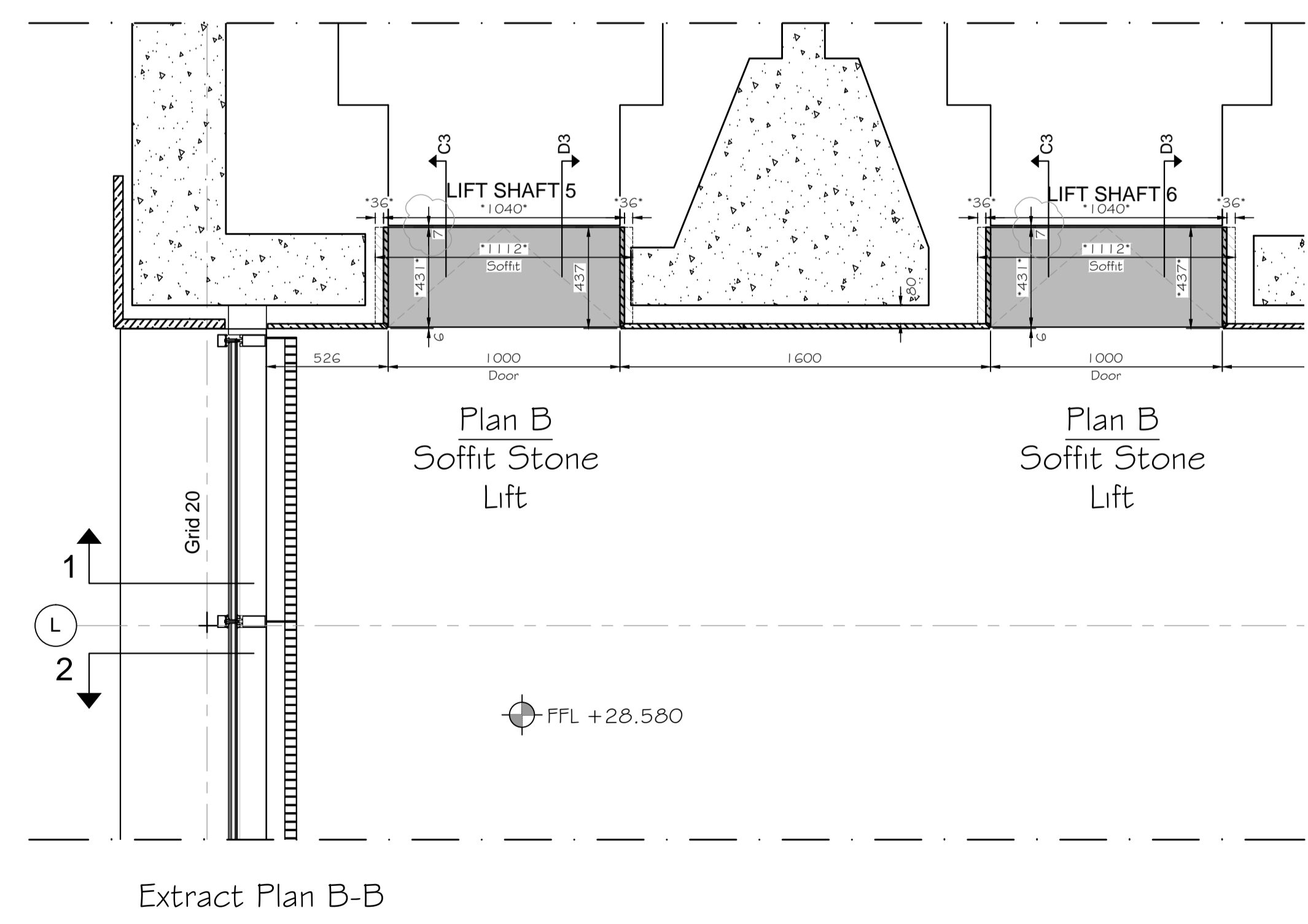
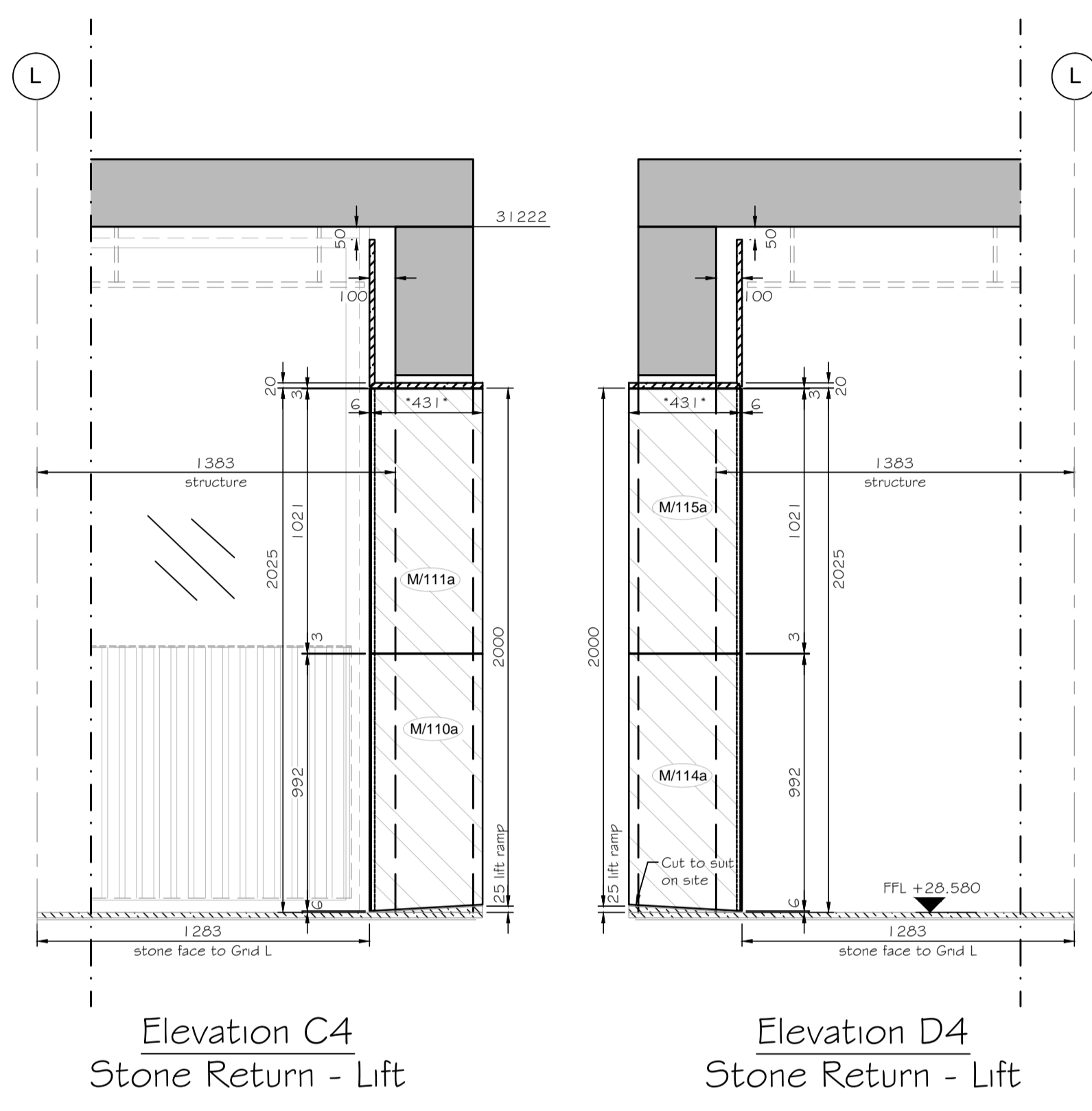
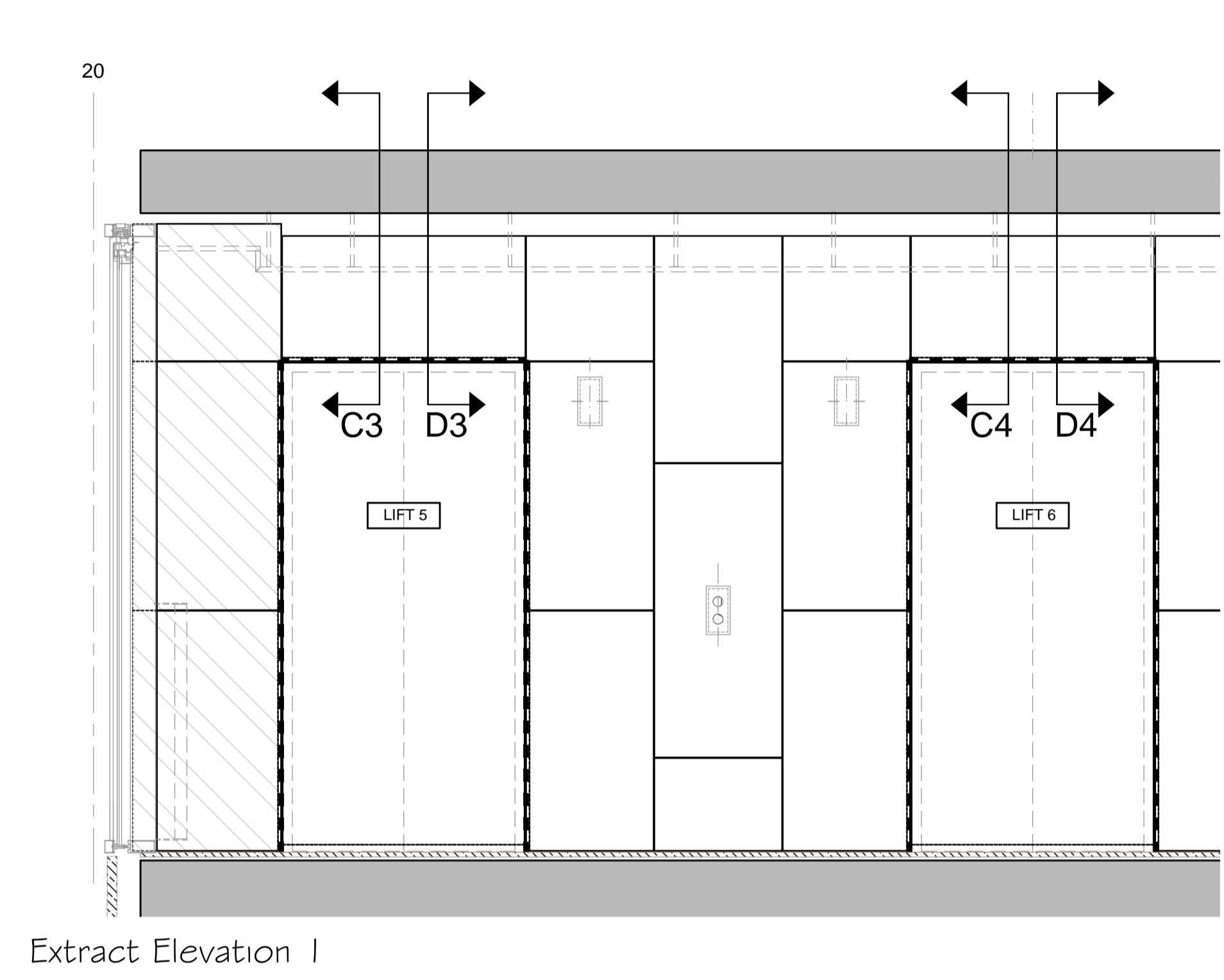
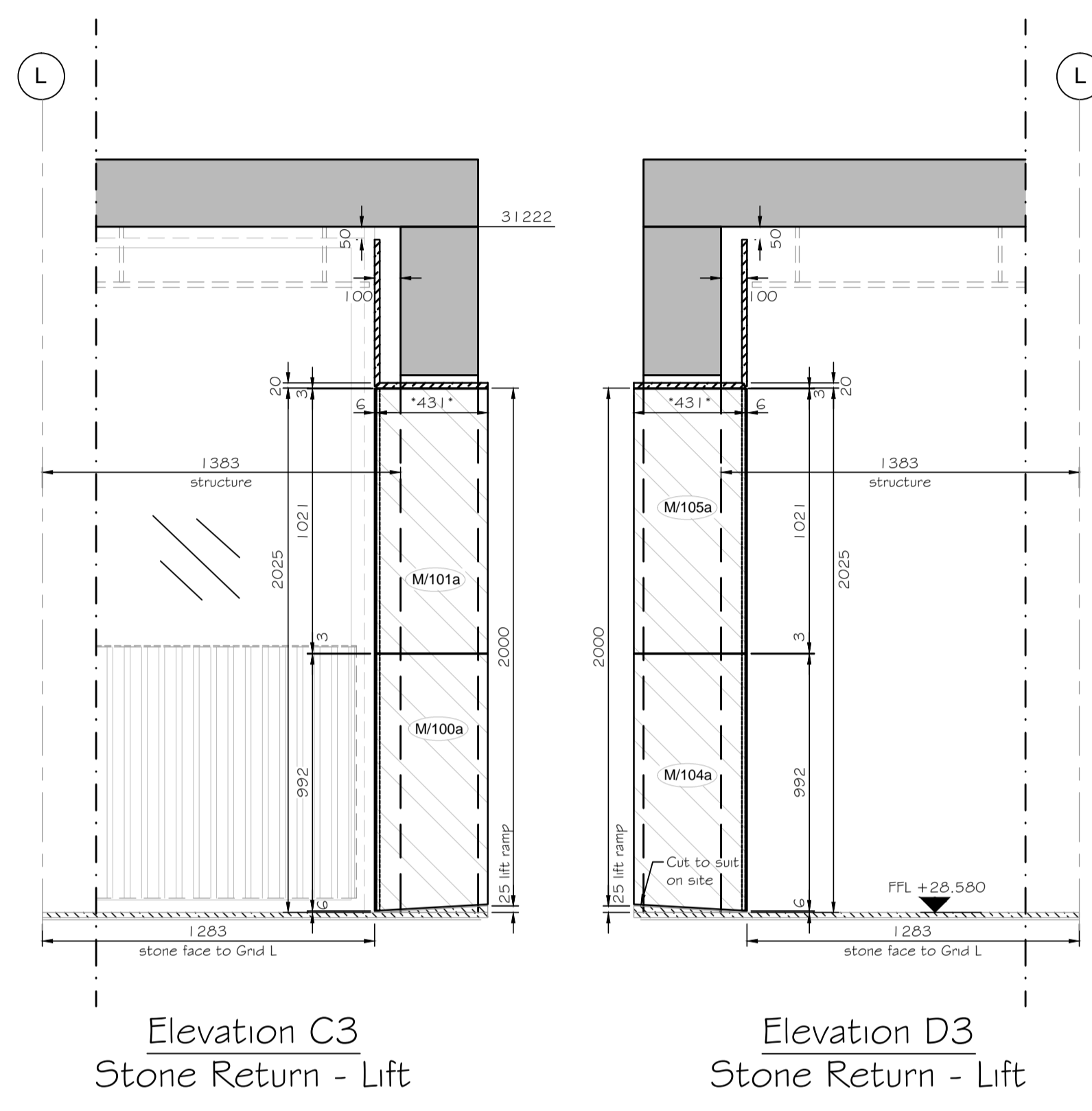


# SOUTH CORE - MEZZANINE FLOOR - RETURN STONE & SOFFIT LAYOUT - LIFT LOBBY - PART 1 STONE LAYOUT - 1:20



Read in conjunction with stone layout drawing H1312-21-CP-M-104 & series from H1312-21-CP-XX-716 & series from H1312-21-CP-XX-686 to 692

Note \* on the dimension : Stone will be oversized to be cut to suit on site

- NOTES**
- No dimensions to be scaled from this drawing.
  - All dimensions to be checked on site.
  - The Designer must be notified where any discrepancy occurs between specification and drawing.
  - COPYRIGHT: The contents of this drawing may not be reproduced in whole or part without the written permission of HarrisonGoldman.

Based on CONRAN+PARTNERS drawings: 2332-(42)-071\_C6, 2332-(24)-159\_C3, 2332-(24)-160\_C3, 2332-(25)-707\_C1, 2332-(25)-720\_C3, 2332-(25)-520\_C1, 2332-(25)-521\_C1, 2332-(25)-522\_C1, 2332-(25)-523\_C1, 2332-(25)-525\_C1, 2332-(76)-021\_C1, (2332-(21)-502\_C3, 2332-(42)-022\_C1, 2332-(76)-005\_C2, 2332-(24)-102\_C1, 2332-(43)-100\_C1, L10/650A\_C2, H51/110A\_C3, .

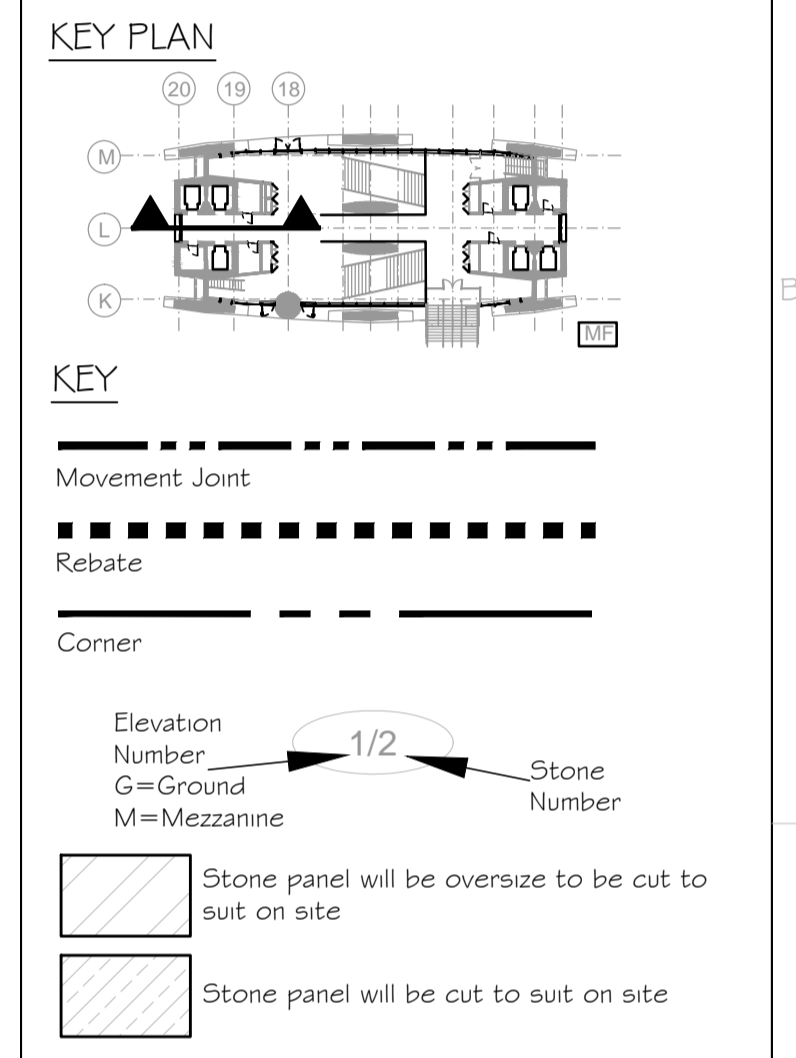
Based on FLOWMAN CRAVEN drawings: 30879-00GF-01\_E, 30879-0GMF-01\_E, 30879-00GE-01\_D

Based on OTIS & Gronomy drawings: F601-G6-CPT-XX-2111\_F; F601-G6-CPT-XX-3111\_F; (106610/T/6102\_12)

Based on Glassolutions & d+b facades drawings: D803-21-CPT-00-105, D803-21-CPT-00-207, D804-21-CPT-00-113\_D

**Note:**  
All panels to be 20mm thick unless noted otherwise.

ALL STRUCTURAL WALL, BEAMS, COLUMNS AND PARTY WALLS, REQUIRE SITE VERIFICATION.



03	Updated with the Architect's comments: 7mm gap to lift architrave and Stone; Drgs refer updated.	MKS	MG	28:04:17
02	Drgs refer added; Soffit panels oversized; Panel for remove of FSAL changed; noted added.	MKS	MG	31:03:17
01	Updated with the Architect's comments: Internal Lining aligned with external cladding; Reduced cavity to fixing; Panels, return stones and soffit changed width; Main heights reduced; lift ramps added; internal birth mouth joints changed to 65mm; Window coordinated with survey; Rebate in panels near window; opening stones faces changed; references drawing updated; Section added; Key note added; Layout changed; Nos added.	CLJ	MG	08:02:16
00	FIRST ISSUE	CLJ	MG	10:11:16
Rev	Revision details	Drawn by	Check	Data

Client: **Almacantar**

Contractor: **Multiplex**

**HARRISON GOLDMAN**  
DESIGN CONSULTANTS  
Airport House  
Purley Way  
Croydon - Surrey CR0 0XZ  
Tel: 020 8683 4777  
e-mail: enquiries@harrisongoldman.com

HG Drawing No.: C5527-HG-S202

Project  
**Centre Point London**

Drawing Title  
**Stone Return & Soffit part 1  
Lift Lobby - MF - South Core**

Status: Construction	Date: 10/11/2016	Scale: 1:20@A1			
Job No.: 658	Drawn by: CLJ	Checked: MG			
Origin	CISFB Code	Building Code	Level	Series	Revision
H1312	21	CPT	M	105	03