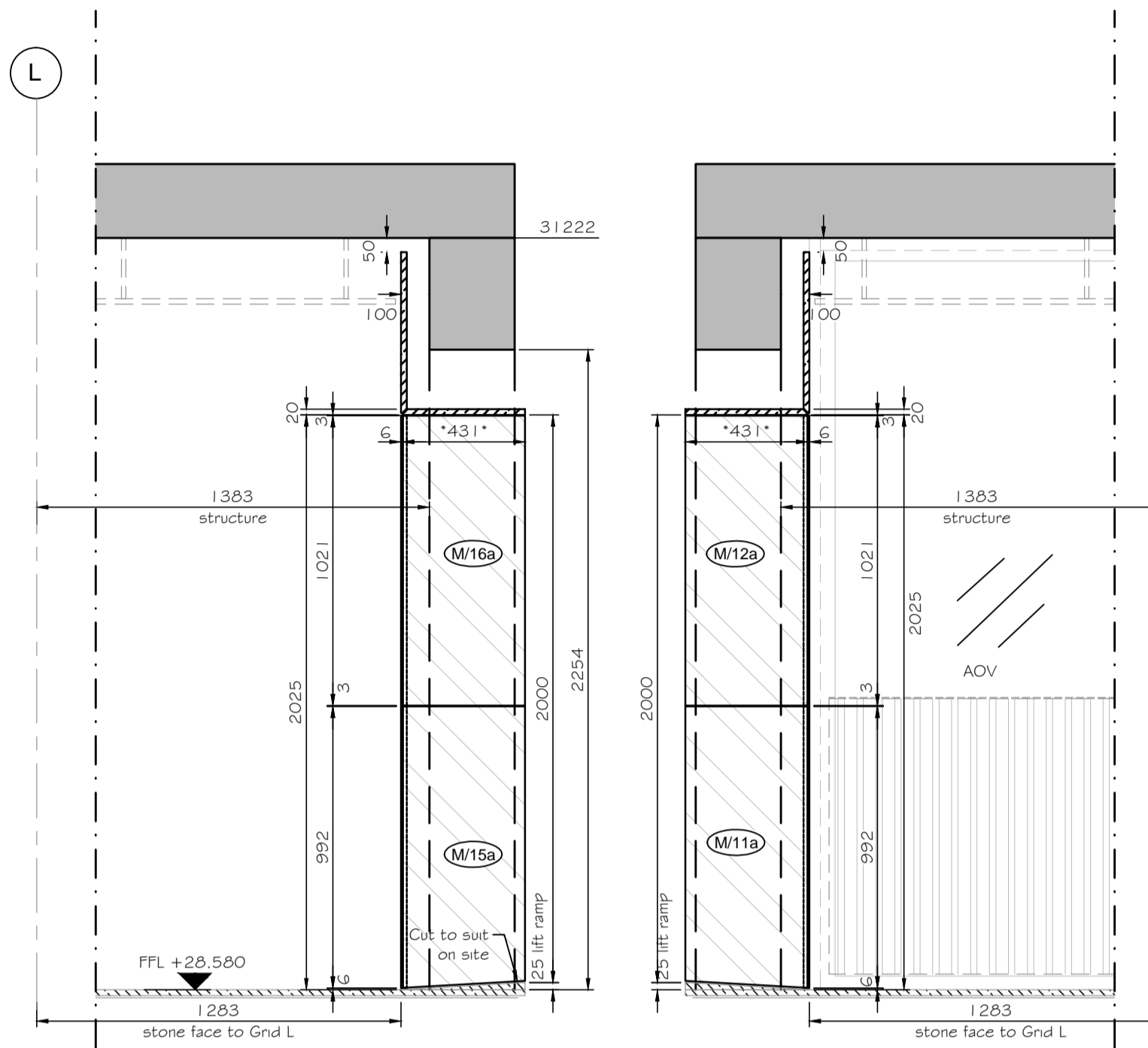


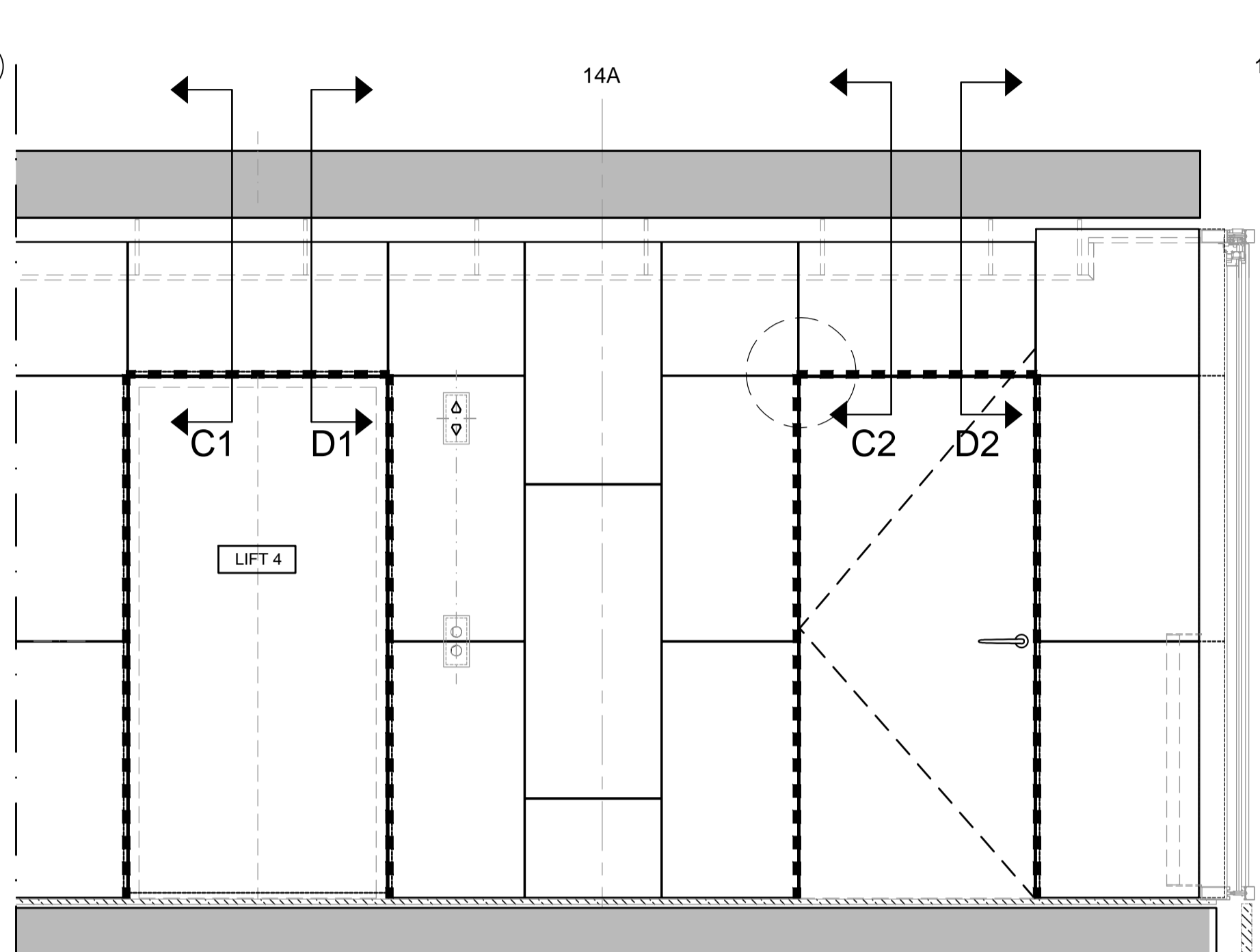
NORTH CORE - MEZZANINE FLOOR - RETURN STONE & SOFFIT LAYOUT - LIFT LOBBY - PART 1

STONE LAYOUT - 1:20

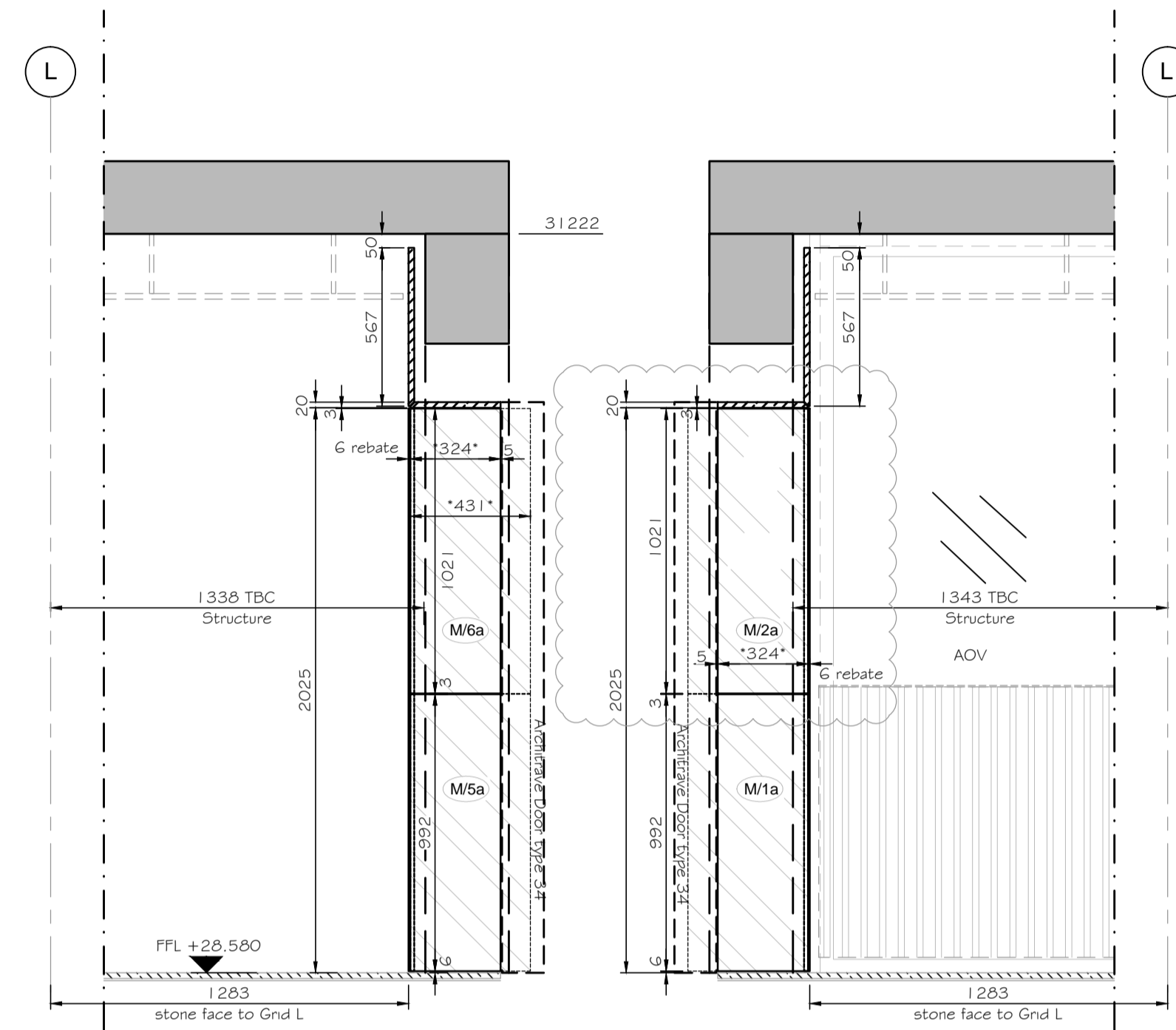


Elevation C1
Stone Return - Lift

Elevation D1
Stone Return - Lift

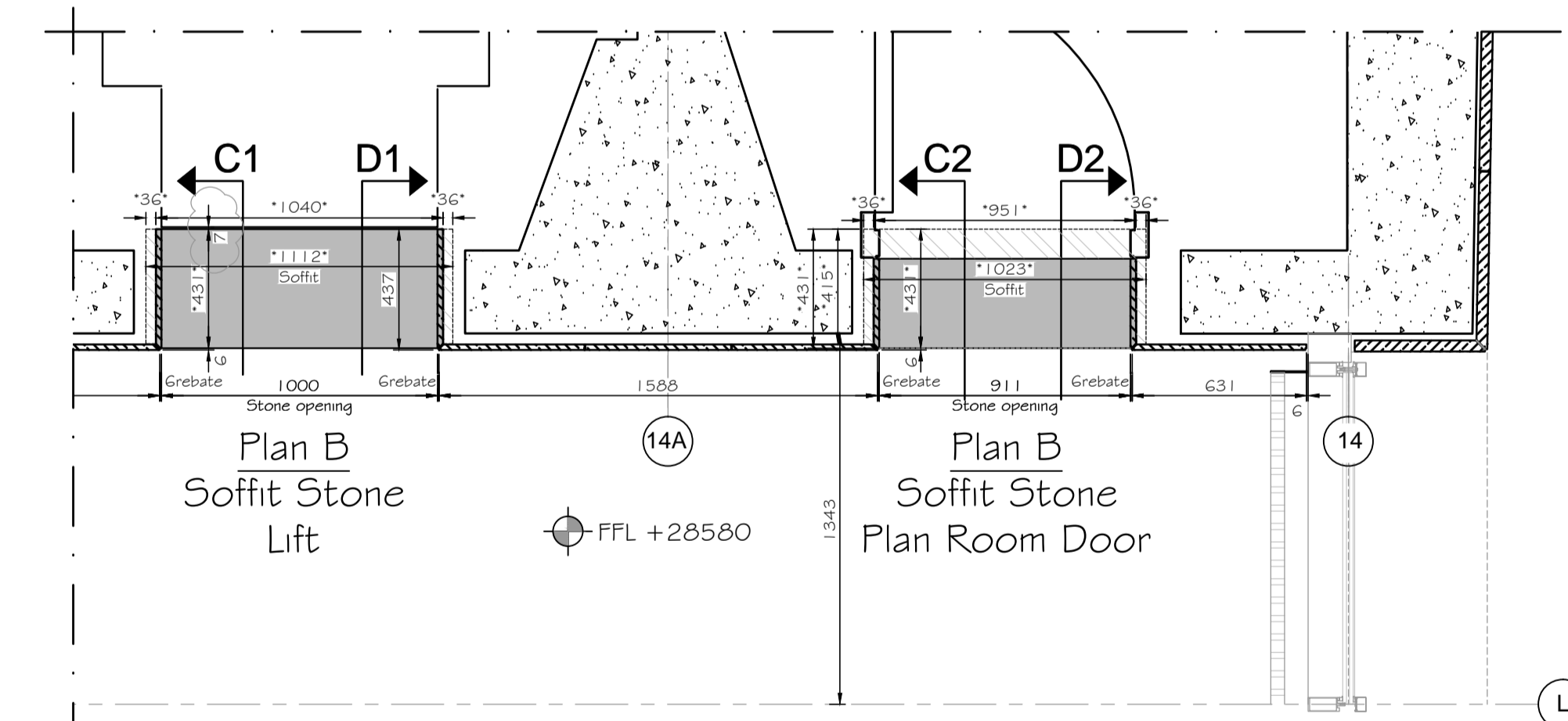


Extract - Elevation I



Elevation C2
Stone Return
Service Door

Elevation D2
Stone Return
Service Door



Extract - Plan B-B

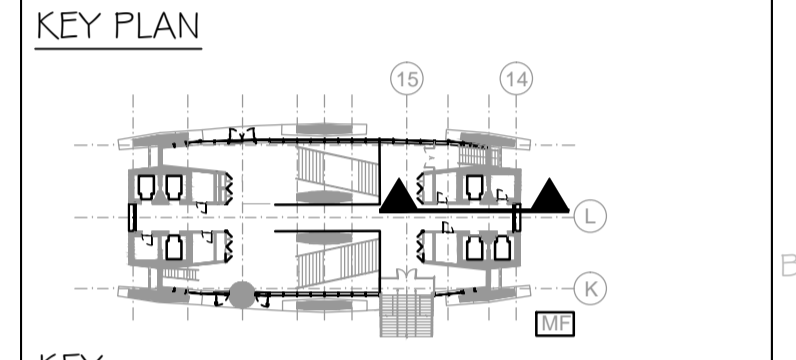
Read in conjunction with stone layout drawing H1312-21-CP-M-100 & H1312-21-CP-XX-714 & series from H1312-21-CP-XX-671 to 678

Note * on the dimension :
Stone will be oversized to be cut to suit on site

- NOTES
1. No dimensions to be scaled from this drawing.
 2. All dimensions to be checked on site.
 3. The designer must be notified where any discrepancy occurs between specification and drawing.
 4. COPYRIGHT: The contents of this drawing may not be reproduced in whole or part without the written permission of HarrisonGoldman.

Based on CONRAN+PARTNERS drawings:
2332-(42)-071_C6, 2332-(24)-161_C3,
2332-(24)-162_C3, 2332-(25)-707_C1,
2332-(25)-721_C5, 2332-(25)-720_C3,
2332-(25)-520_C1, 2332-(25)-521_C1,
2332-(25)-522_C1, 2332-(25)-523_C1,
2332-(25)-525_C1, 2332-(76)-021_C1,
2332-(21)-502_C3, 2332-(42)-022_C1,
2332-(76)-005_C2, 2332-(24)-102_C1,
110650A_C2, H517110A_C3,
Based on PLOWMAN CRAVEN drawings:
30879-00GF-01_E, 30879-0GMF-01_E,
30879-00GE-01_D
Based on OTIS & Grontmij drawings:
F601-G6-CPT-XX-211_F;
F601-G6-CPT-XX-311_F; 106610T/10212
Based on Glassolutions & a+b facades drawings:
D803-21-CPT-00-105_D803-21-CPT-00-207,
D804-21-CPT-00-113_D

Note:
All panels to be 20mm thick unless noted otherwise.
ALL STRUCTURAL WALL, BEAMS, COLUMNS AND PARTY WALLS, REQUIRE SITE VERIFICATION.



- KEY
- Movement Joint
 - Rebate
 - Corner
 - Elevation Number: G=Ground, M=Mezzanine
 - Stone Number: 1/2
 - Stone panel will be oversized to be cut to suit on site
 - Stone panel will be cut to suit on site

03	Updated with the Architect's comments: 7mm gap to lift architrave and Stone; Drgs refer updated; Remote of FSAL removed from panel.	MKS	MG	28:04:17
02	Drgs refer added; Soffit panels oversized; Panel for remote of FSAL changed; noted added.	MKS	MG	31:03:17
01	Updated with the Architect's comments: Panels, return stones and soffit changed width; FSAL added; Main heights reduced; lift ramps added; internal birth mouth joints changed to 6x6mm; Window coordinated with survey; Rebate in panels near window; opening stones faces changed; references drawing updated; Key note added; Layout changed; Nos added.	MKS	MG	08:02:16
00	FIRST ISSUE	MKS	MG	20:10:16
Rev	Revision details	Drawn by	Check	Data

Client: **Almacantar**
Contractor: **Multiplex**
HARRISON GOLDMAN
DESIGN CONSULTANTS
Airport House
Purley Way
Croydon - Surrey CR0 0XZ
Tel: 020 8683 4777
e-mail: enquiries@harrisongoldman.com
HG Drawing No.: C5527-HG-N202

Project Centre Point London				
Drawing Title Stone Return & Soffit - Part 1 Lift Lobby - MF - North Core				
Status: Construction	Date: 20/10/2016	Scale: 1:20@A1		
Job No.: 658	Drawn by: MKS	Checked: MG		
Origin	CISFB Code	Building Code	Level	Series
H1312	21	CPT	M	101
				03

