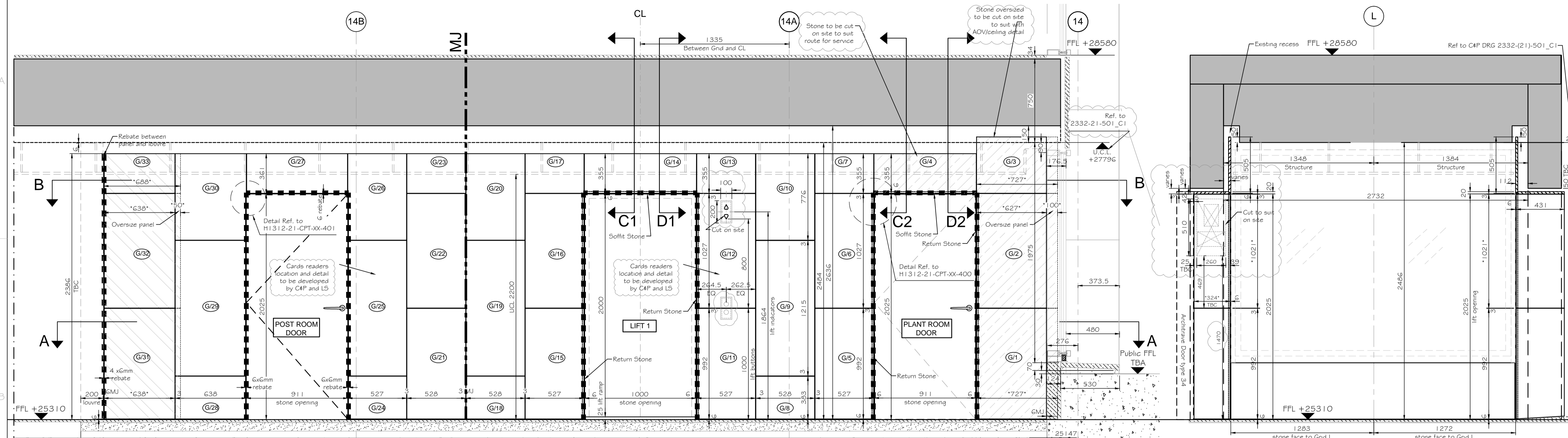


LIFT LOBBY - PART 1 - STONE LAYOUT NORTH CORE - GROUND FLOOR



NOTES

- No dimensions to be scaled from this drawing.
- All dimensions to be checked on site.
- The designer must be notified where any discrepancy occurs between specification and drawing.
- COPYRIGHT: The contents of this drawing may not be reproduced in whole or part without the written permission of HarrisonGoldman.

Based on CONRAN+PARTNERS drawings:
2332-(42)-070_C7, 2332-(24)-157_C2, 2332-(24)-158_C2, 2332-(25)-721_C5, 2332-(25)-521_C1, 2332-(25)-522_C1, 2332-(25)-523_C1, 2332-(25)-525_C1, 2332-(76)-022_C1, 2332-(76)-005_C2, 2332-(43)-100_C1, 2332-(21)-501_C1, 2332-(42)-022_C1, 2332-(21)-502_C3, 2332-(31)-034_C2, 2332-(31)-033_C1, 2332-(25)-707_C1, 2332-(24)-102_C1

Based on FLOWMAN CRAVEN drawings:
30879-00GF-01_E, 30879-0GMF-01_E, 30879-00GE-01_D

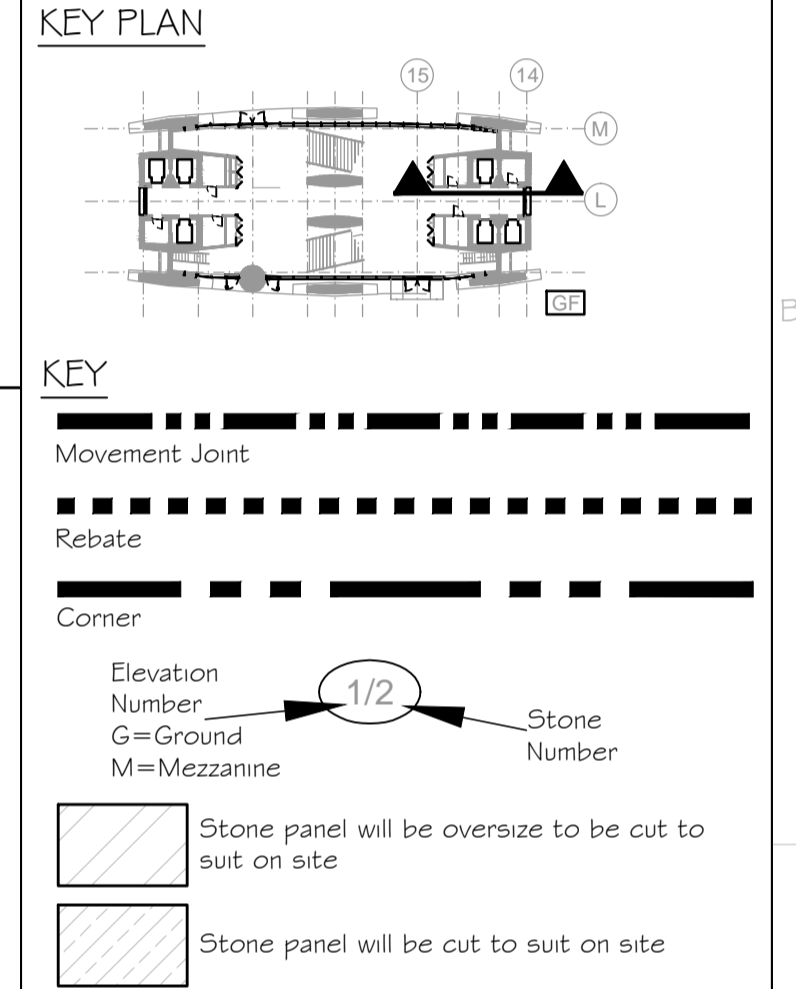
Based on OTIS & Grontmij drawings:
F601-66-CPT-XX-201_F; (1066107/6102_12)

Based on Glassolutions # d+b facades drawings:
D803-21-CPT-00-105, D803-21-CPT-00-207, D804-21-CPT-00-113_D

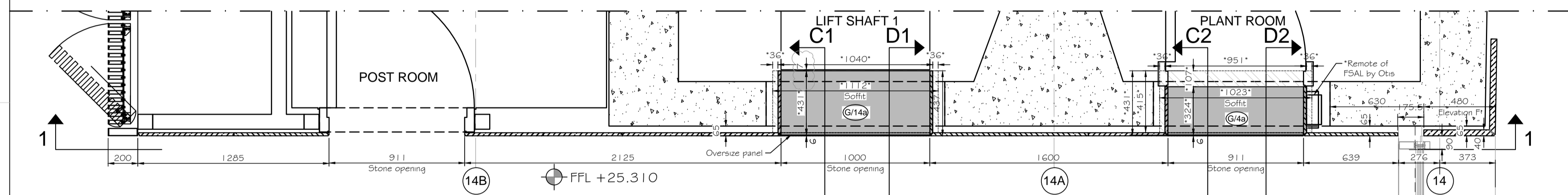
Based on HG drawings:
H1312-21-CPT-XX-400, H1312-21-CPT-XX-401

Note:
All slabs to be 20mm thick unless noted otherwise.

ALL STRUCTURAL WALL, BEAMS, COLUMNS AND PARTY WALLS, REQUIRE SITE VERIFICATION.



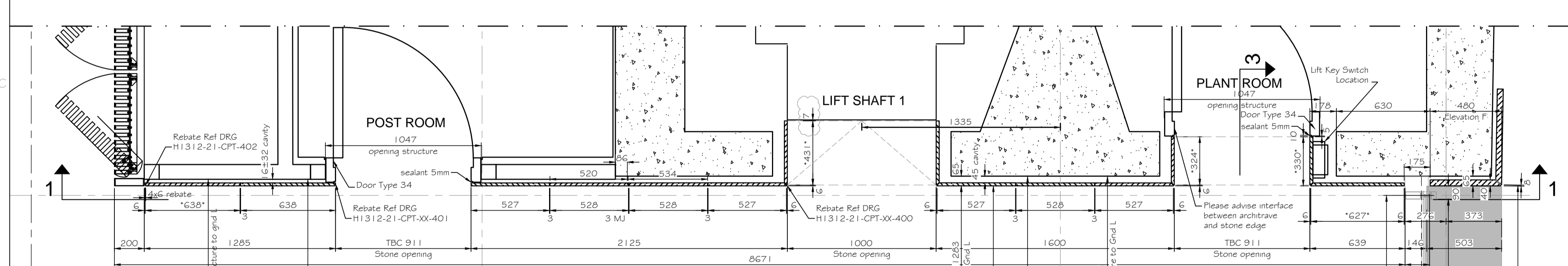
Elevation I



Section 3-3

Read in conjunction with stone layout drawing H1312-21-CP-00-101 & H1312-21-CP-XX-706 & series from 312-21-CP-XX-600 to 607

Plan B-B

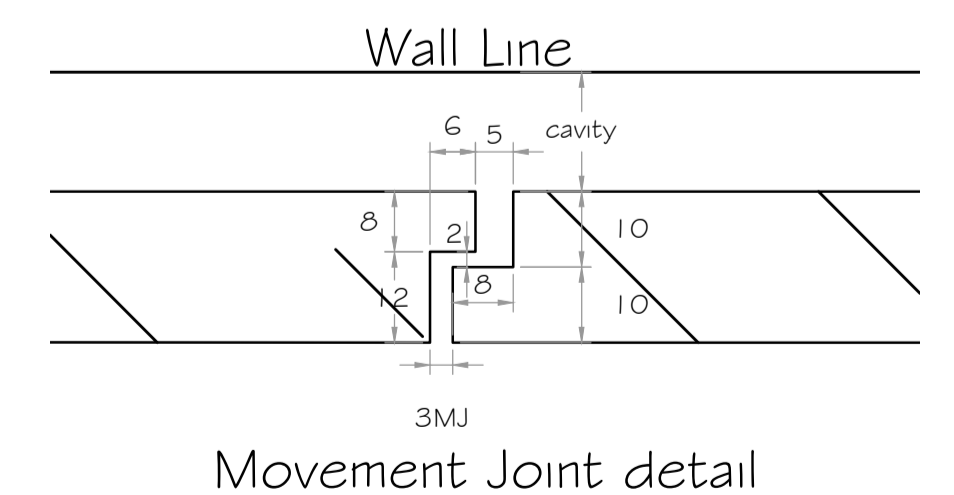
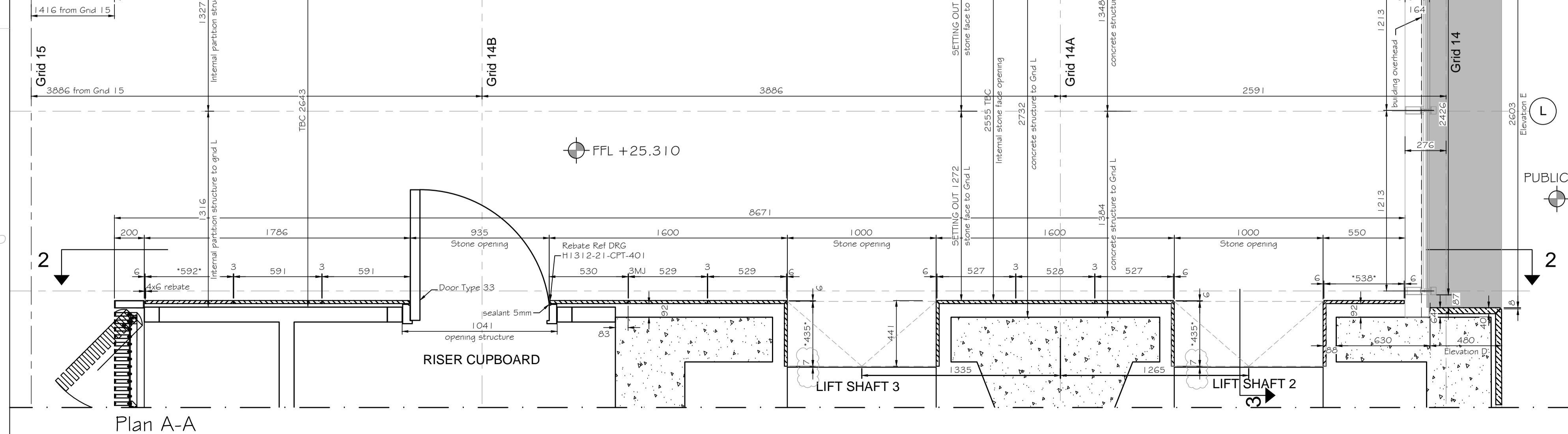


Note * on the dimension :
Stone will be oversized to be cut to suit on site

Paye Note:

- coordinate panel & fixing with services.
- Sprinkler routes to be coordinated with Architect Note 13/04/2017:
- Info from LS required to coordinate M+E including the side wall sprinkler routes.

Plan A-A



04	Updated with the Architect's comments: 7mm gap to lift architrave and Stone panels; Notes added; lift indicator amended; Panel for remote of FSAL moved. Architect's notes added.	MKS	MG 28:04:17	
03	Drgs refer added: Movement Joint changed from 6mm to 3mm. Panels changed size and detail added; notes changed; Rebate deleted near window and panels oversized dimensions; Rebate changed near louvre; Window updated; Lift bottom & light face plates added.	MKS	MG 29:03:17	
02	Updated with the Architect's comments: Stones Nos added; Setting-out to Grid 15 added; Drgs refer updated & Key note added; Lining moved forward; notes added; Lift indicator moved in elevation.	MKS	MG 31:01:17	
01	Updated with the Architect's comments: Internal Lining aligned with external cladding; Reduced cavity to fixing; Panels, return stones and soffit changed with FSAL added; Main heights reduced; lift ramps added; internal birth mouth joints changed to 8x8mm; Window coordinated with survey; Rebate in panels near window; opening stones faces changed.	MKS	MG 09:12:16	
00	First Issue	MKS	MG 20:10:16	
Rev	Revision details	Drawn by	Check	Data

Client: **Almacantar**

Contractor: **Multiplex**

HARRISON GOLDMAN
DESIGN CONSULTANTS
Airport House
Purley Way
Croydon - Surrey CR0 0XZ
Tel: 020 8683 4777
e-mail: enquiries@harrisongoldman.com

HG Drawing No.: C5527-HG-N101

Project: **Centre Point London**

Drawing Title: **Stone Layout part 1 - Lift Lobby North Core - Ground Floor**

Status: Construction	Date: 20/10/2016	Scale: 1:20@A1			
Job No.: 658	Drawn by: MKS	Checked: MG			
Origin	CISFB Code	Building Code	Level	Series	Revision
H1312	21	CPT	00	100	04