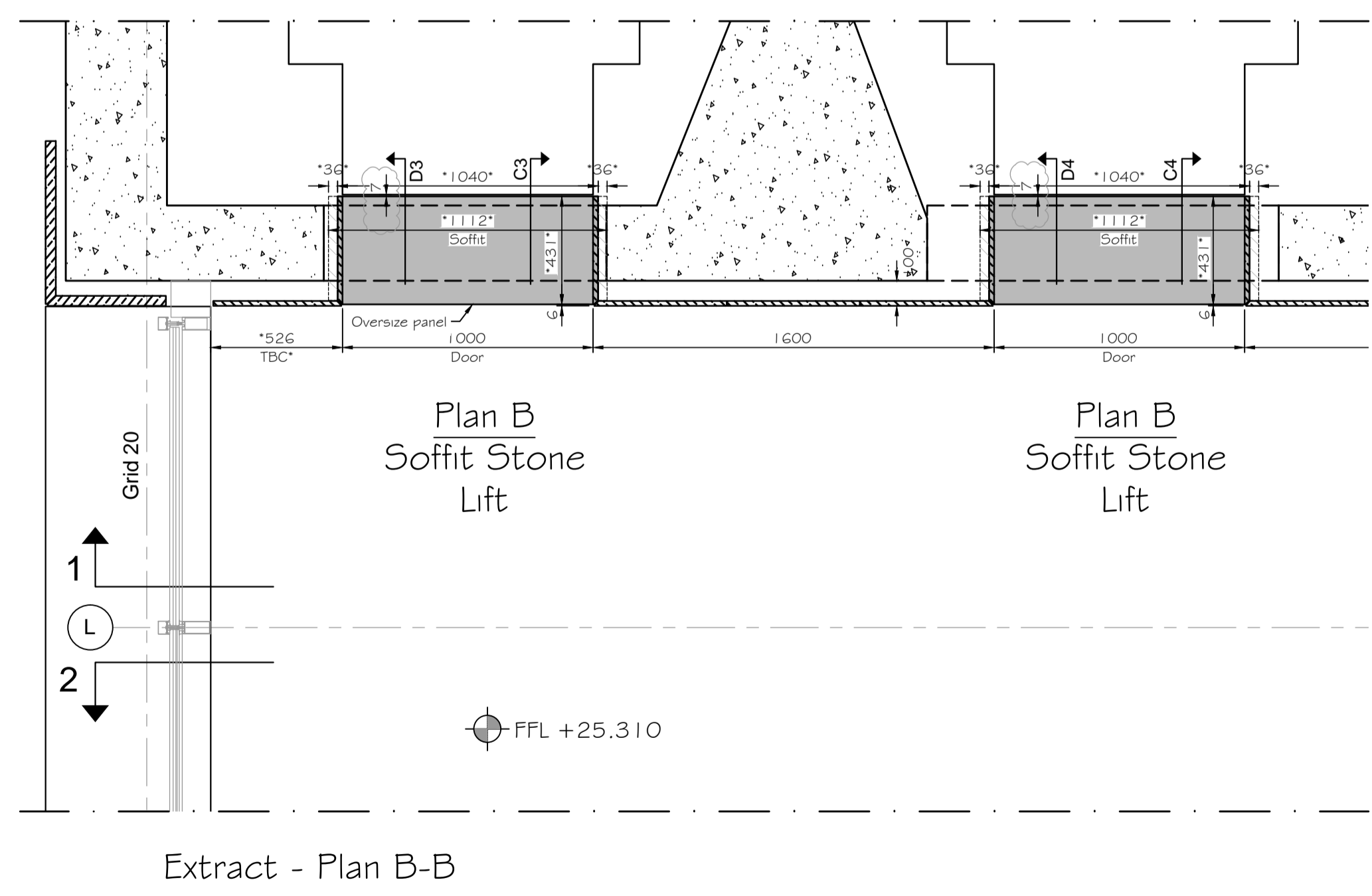
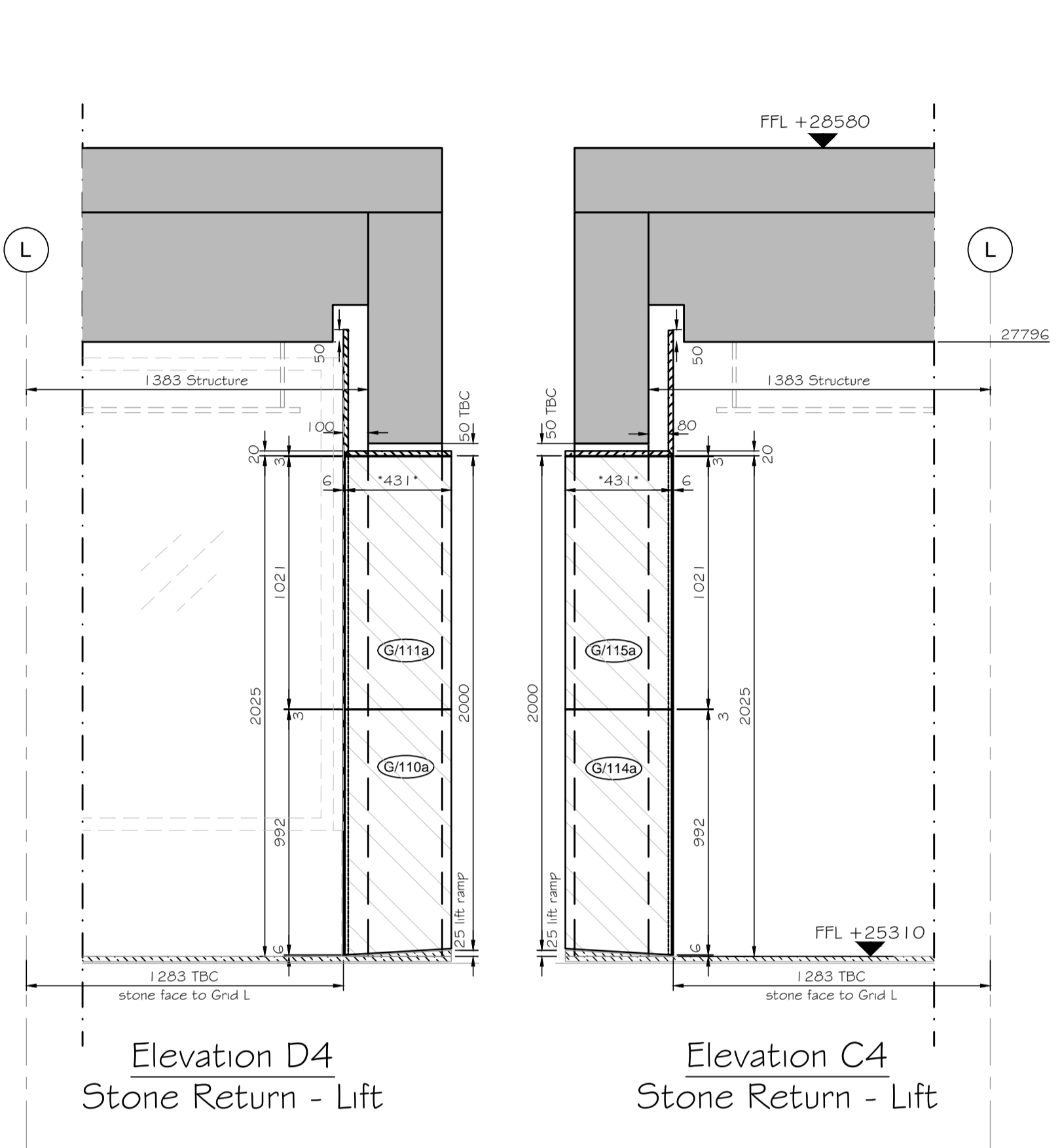
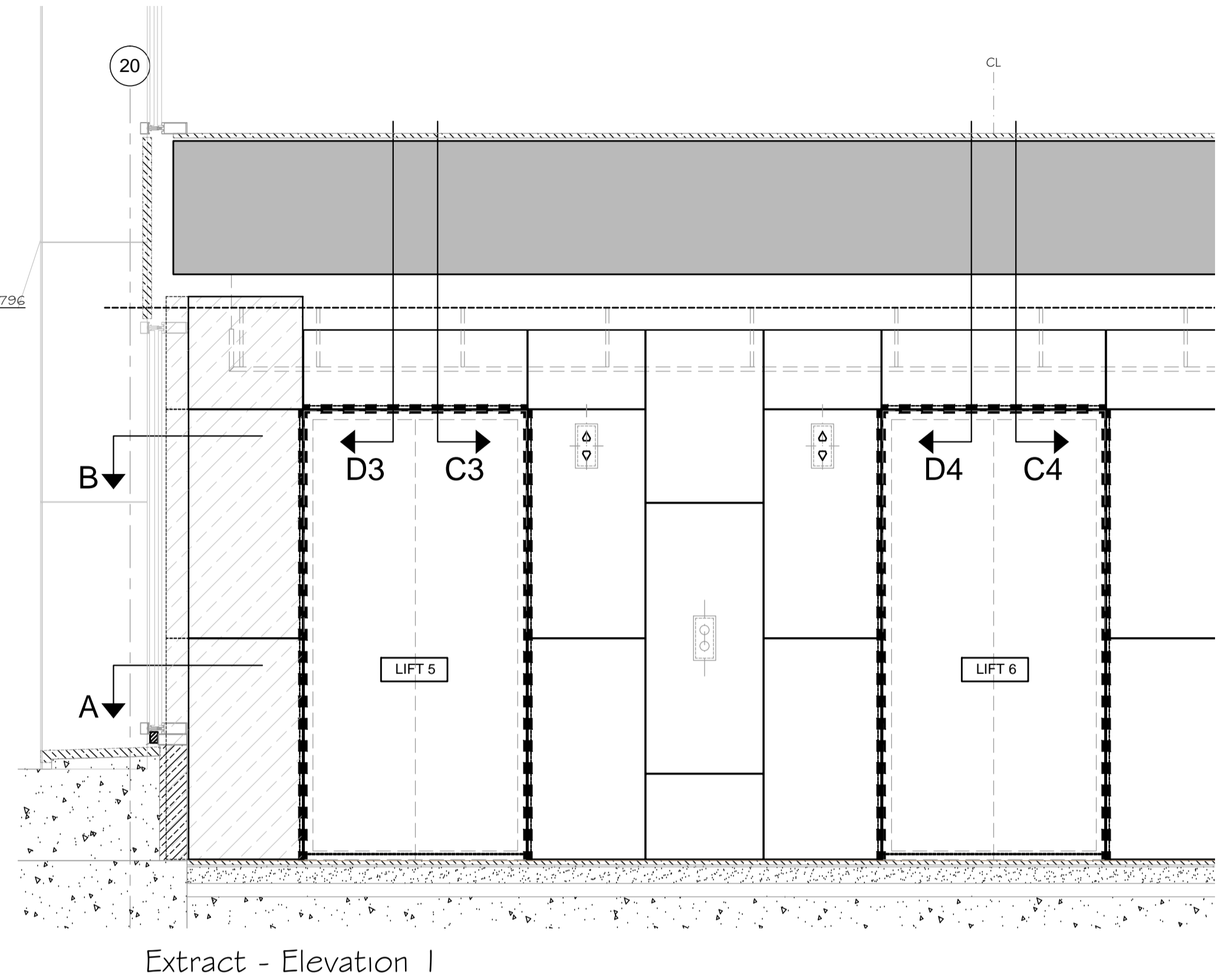
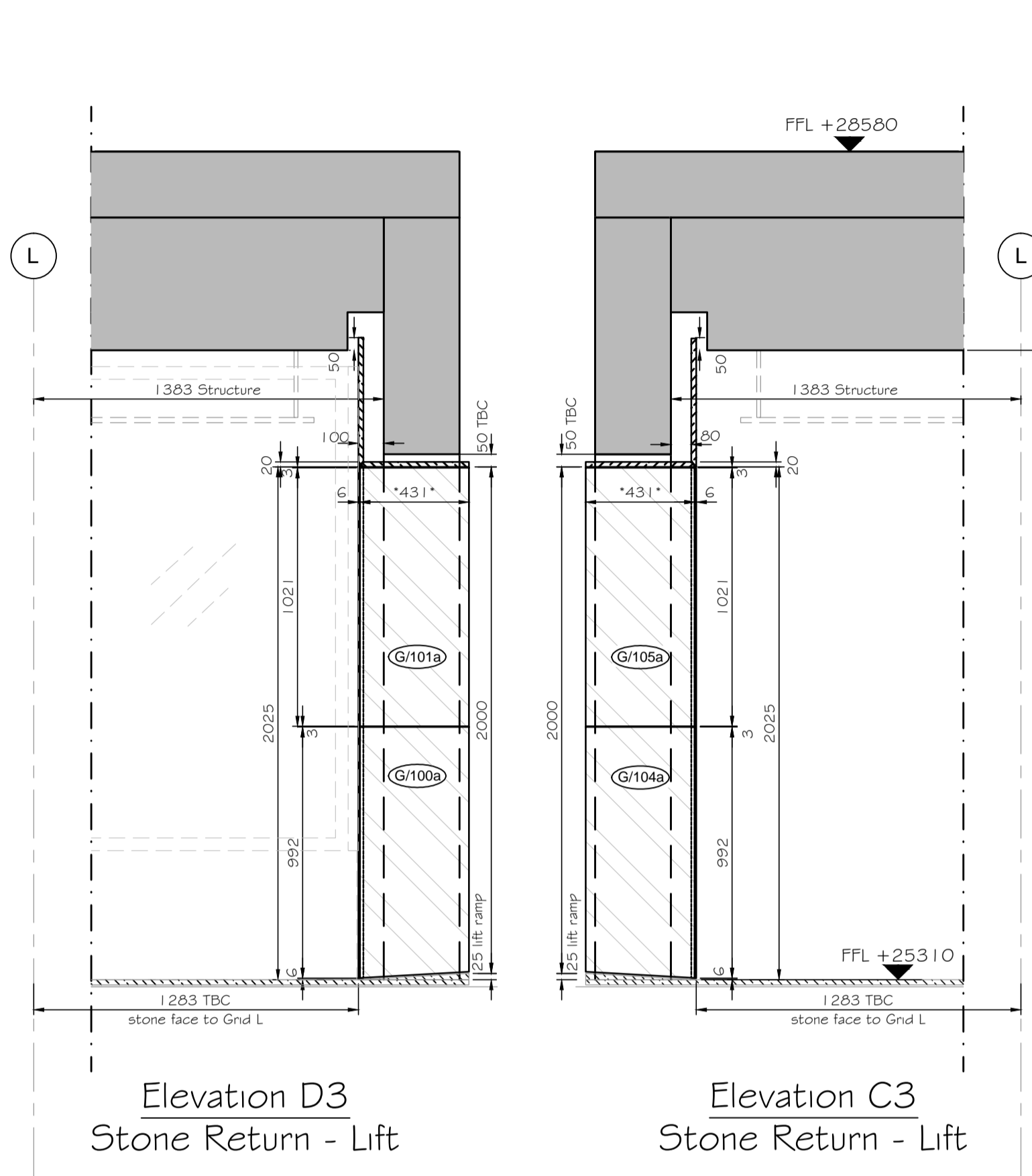


SOUTH CORE - GROUND FLOOR - RETURN STONE & SOFFIT LAYOUT - LIFT LOBBY - PART 1

STONE LAYOUT - 1:20



Read in conjunction with stone layout drawing H1312-21-CP-00-104 & H1312-21-CP-XX-708 & series from H1312-21-CP-XX-615 to 620

Note * on the dimension : Stone will be oversized to be cut to suit on site

- NOTES
1. No dimensions to be scaled from this drawing.
 2. All dimensions to be checked on site.
 3. The Designer must be notified where any discrepancy occurs between specification and drawing.
 4. COPYRIGHT: The contents of this drawing may not be reproduced in whole or part without the written permission of HarrisonGoldman.

Based on CONRAN+PARTNERS drawings:
 2332-(42)-070_C7, 2332-(24)-155_C2,
 2332-(24)-156_C2, 2332-(25)-720_C3,
 2332-(25)-520_C1, 2332-(25)-521_C1,
 2332-(25)-522_C1, 2332-(25)-523_C1,
 2332-(25)-525_C1, 2332-(76)-021_C1,
 2332-(76)-005_C2, 2332-(43)-100_C1,
 2332-(21)-501_C3, 2332-(42)-022_C1,
 2332-(21)-502_C1, 2332-(25)-707_C1,
 L10/G50A_C2;H5171 10A_C3;2332-(24)-102_C1.

Based on FLOWMAN CRAVEN drawings:
 30879-00GF-01_E, 30879-00GM-01_E,
 30879-00GE-01_D

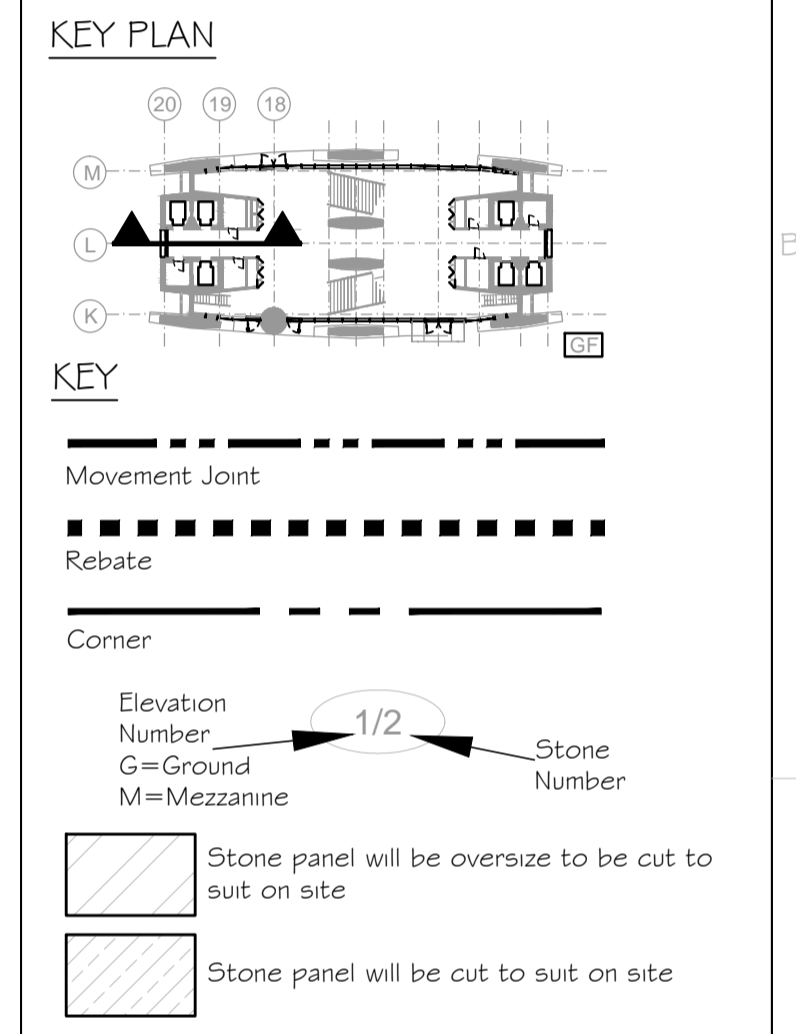
Based on OT15 & Grontmy drawings:
 F601-G6-CPT-XX-211_F;
 F601-G6-CPT-XX-311_F; (106610/T/G102_12)

Based on Glassolutions & d+b facades drawings:
 D803-21-CPT-00-105, D803-21-CPT-00-207,
 D804-21-CPT-00-113_D

Based on HG drawings:
 H1312-21-CPT-XX-400, 401, 402, 404, 405.

Note:
 All slabs to be 20mm thick unless noted otherwise

ALL STRUCTURAL WALL, BEAMS, COLUMNS AND PARTY WALLS, REQUIRE SITE VERIFICATION.



04	Updated with the Architect's comments: 7mm gap to lift architrave and Stone panels.	MKS	MG	21:04:17
03	Drgs refer added: Soffit Panels oversize dimensions; notes changed.	MKS	MG	30:03:17
02	Updated with the Architect's comments: Stones Nos added: Setting-out to Grid L changed; Drgs refer updated; Key note added; Section added.	MKS	MG	01:02:17
01	Updated with the Architect's comments: Internal Lining aligned with external cladding; Reduced cavity to fixing; Panels, return stones and soffit changed width; FSAL added; Main heights reduced; lift ramps added; internal both mouth joints changed to 60mm; Window coordinated with survey; Rebate in panels near window; opening stones faces changed; Panel added above grille; references drawing updated. Layout changed.	CLJ	MG	14:12:16
00	FIRST ISSUE	CLJ	MG	10:11:16
Rev	Revision details	Drawn by	Check	Data

Client: **Almacantar**

Contractor: **Multiplex**

HARRISON GOLDMAN
 DESIGN CONSULTANTS
 Airport House
 Purley Way
 Croydon - Surrey CR0 0XZ
 Tel: 020 8683 4777
 e-mail: enquiries@harrisongoldman.com

HG Drawing No.: C5527-HG-S102

Project
Centre Point London

Drawing Title
Stone Return & Soffit - part 1
Lift Lobby - South Core - Ground Floor

Status: Construction	Date: 10/11/2016	Scale: 1:20@A1
Job No.: 658	Drawn by: CLJ	Checked: MG
Origin	CISFB Code	Building Code
H1312	21	CPT 00
Level	Series	Revision
105		04

