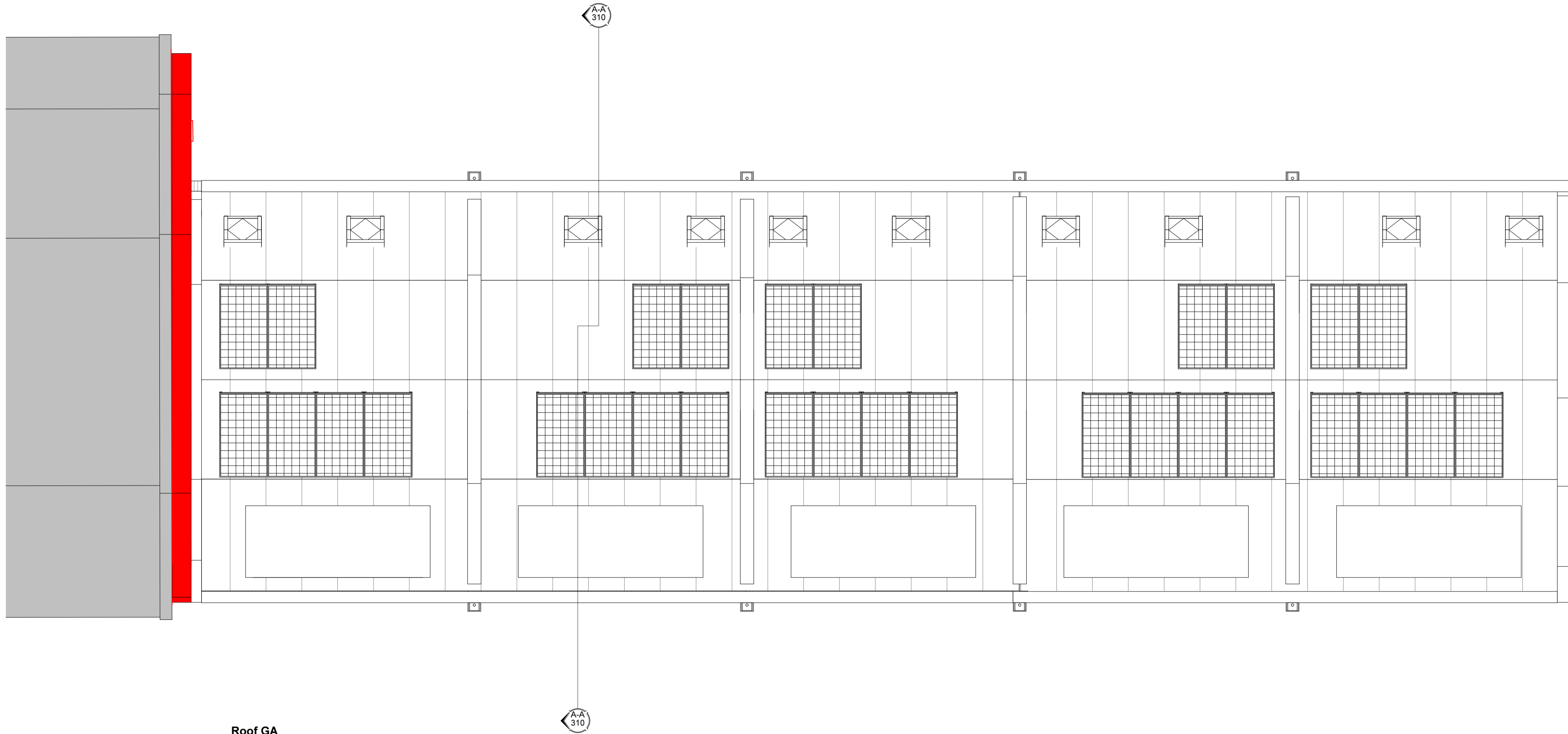
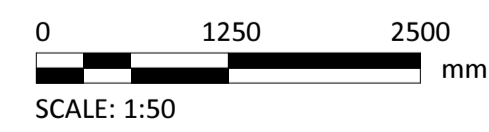


Notes

- For house type general arrangement refer to drgs. A(2)401, 402 & 403.



Roof GA  
1 : 50



REV	DESCRIPTION	DATE	INIT	CHKD
1	DRAWING UPDATED AS FOLLOWS: Scheme generally revised in accordance with discussions from meeting held 25.04.17 with the planning officers.	12.05.17	PMC	CJA



Client  
**Rydon Construction Ltd**  
Project  
**Ashton Court, Camden Park Road, Camden**  
Title  
**Mews - Roof Plan GA**

Scale  
**As indicated**  
Date  
**13/04/17**  
Drawn By  
**CJA**  
Checked By  
**PMC**  
Project No:  
**K160423**  
Drawing No:  
**A(2)280**  
Revision  
**1**

St John's House 1a Knoll Rise Orpington Kent BR6 0JX  
01689 888222 orpington@calfordseaden.co.uk  
calfordseaden LLP is a Limited Liability Partnership Registered in England & Wales number OC311618

ORPINGTON ■ LONDON ■ BIRMINGHAM ■ SOUTHEND ■ WINCHESTER

calfordseaden.co.uk

PLANNING