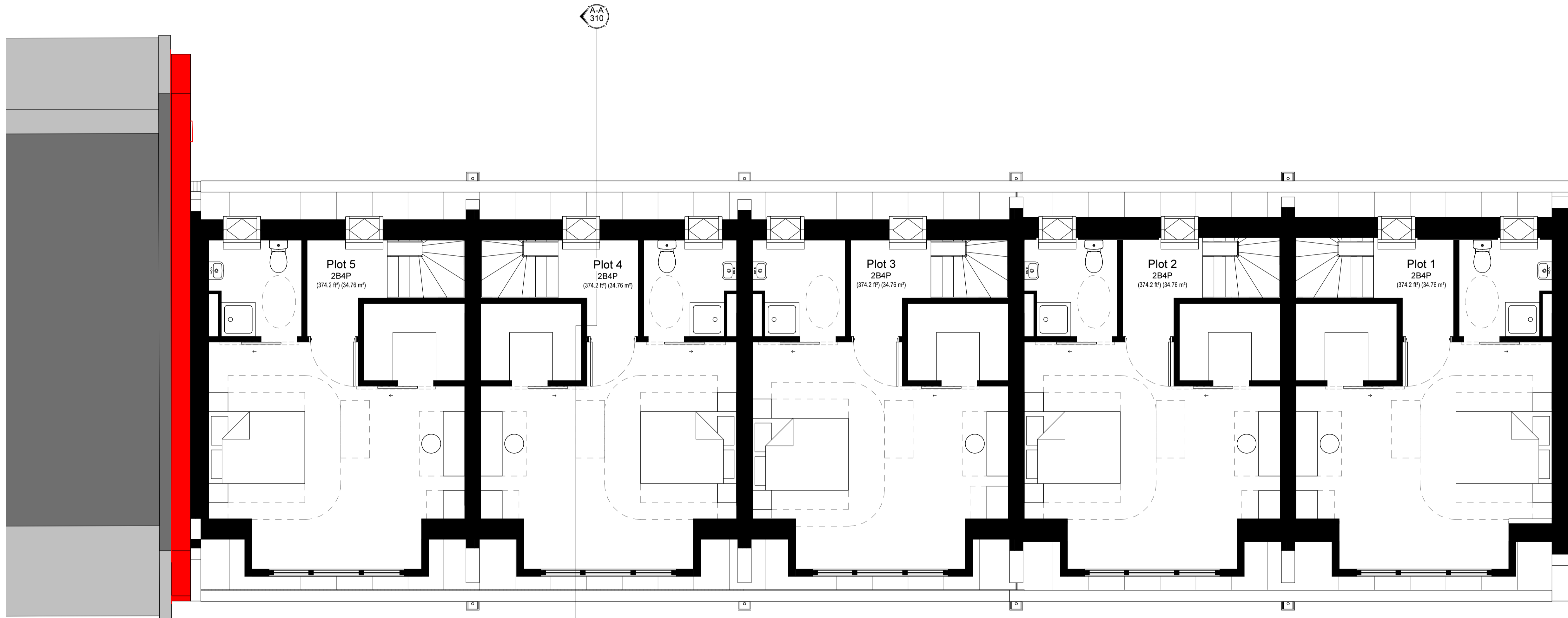


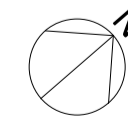
Notes

- For house type general arrangement refer to drgs. A(2)401, 402 & 403.



Second GA
1:50

4	DRAWING UPDATED AS FOLLOWS: Scheme generally revised in accordance with discussions from meeting held 25.04.17 with the planning officers.	12.05.17	PMC	CJA
3	DRAWING UPDATED AS FOLLOWS: Scheme generally revised in accordance with discussions from meeting held 23.02.17 with the planning officers.	06.03.17	PMC	CMR
2	DRAWING UPDATED AS FOLLOWS: Layouts revised to client comments and daylight amendments made	09.01.17	MA	PMC
1	DRAWING UPDATED AS FOLLOWS: Layouts revised to client comments and daylight amendments made	29.11.16	CMR	BPH
REV	DESCRIPTION	DATE	INIT	CHKD



PLANNING



Client
Rydon Construction Ltd
Project
Ashton Court, Camden Park Road, Camden
Title
Mews - Second GA

Scale Date Drawn By Checked By Project No: Drawing No: Revision
As indicated 12.10.16 BPH CMR K160423 A(2)260 4

St John's House 1a Knoll Rise Orpington Kent BR6 0UX
01689 888222 orpington@calfordseaden.co.uk
calfordseaden LLP is a Limited Liability Partnership Registered in England & Wales number OC31161818
ORPINGTON LONDON BIRMINGHAM SOUTHEND WINCHESTER