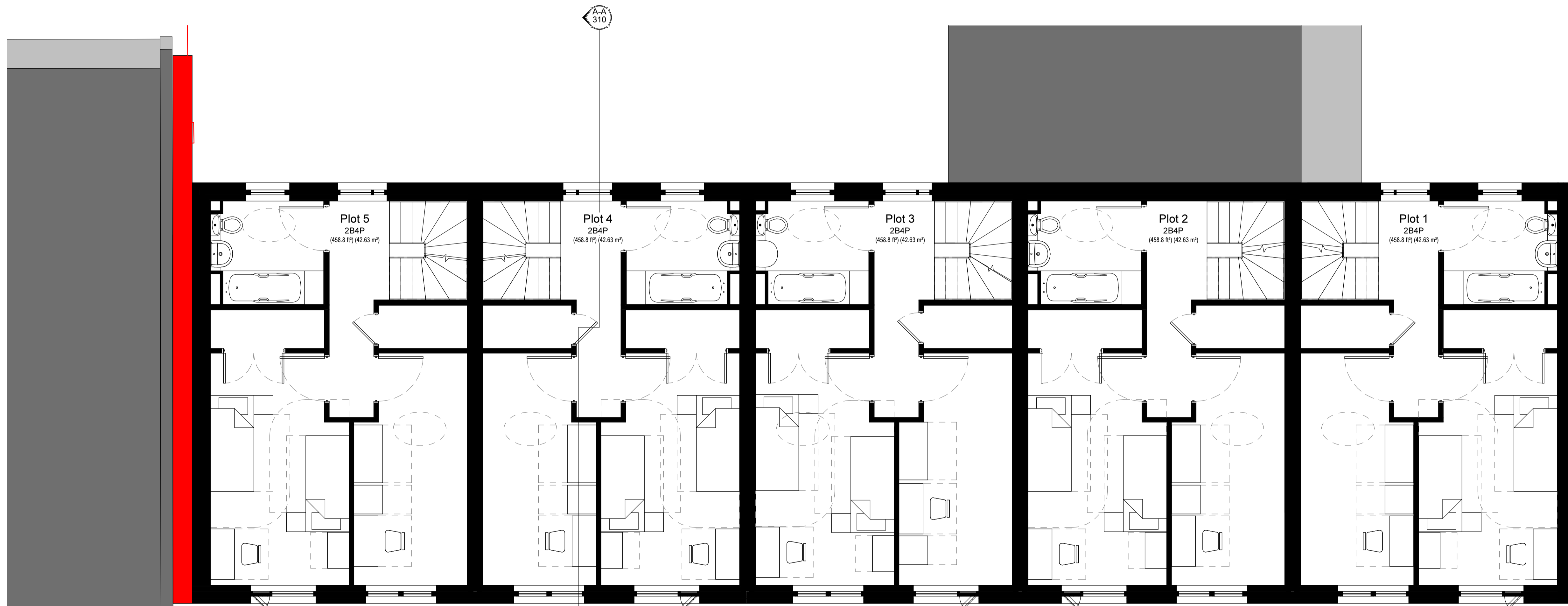


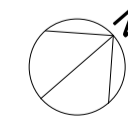
Notes

- For house type general arrangement refer to drgs. A(2)401, 402 & 403.



First GA
1:50

REV	DESCRIPTION	DATE	INIT	CHKD
5	DRAWING UPDATED AS FOLLOWS: Scheme generally revised in accordance with discussions from meeting held 25.04.17 with the planning officers.	12.05.17	PMC	CJA
4	DRAWING UPDATED AS FOLLOWS: Scheme generally revised in accordance with discussions from meeting held 23.02.17 with the planning officers.	06.03.17	PMC	CMR
3	DRAWING UPDATED AS FOLLOWS: Status updated to Planning.	08.01.17	MA	PMC
2	DRAWING UPDATED AS FOLLOWS: Bedroom 2 revised to study. Bedroom 1 revised to twin room. All to client comments.	21.12.16	PMC	CMR
1	DRAWING UPDATED AS FOLLOWS: Layouts revised to client comments and daylight amendments made.	29.11.16	CMR	BPH



Client
Rydon Construction Ltd
Project
Ashton Court, Camden Park Road, Camden
Title
Mews - First GA
Scale Date Drawn By Checked By Project No Drawing No Revision
As indicated 12.10.16 BPH CMR K160423 A(2)240 5

St John's House 1a Knoll Rise Orpington Kent BR6 0UX
01689 888222 orpington@calfordseaden.co.uk
calfordseaden LLP is a Limited Liability Partnership Registered in England & Wales number OC311618
ORPINGTON LONDON BIRMINGHAM SOUTHEND WINCHESTER calfordseaden.co.uk

PLANNING