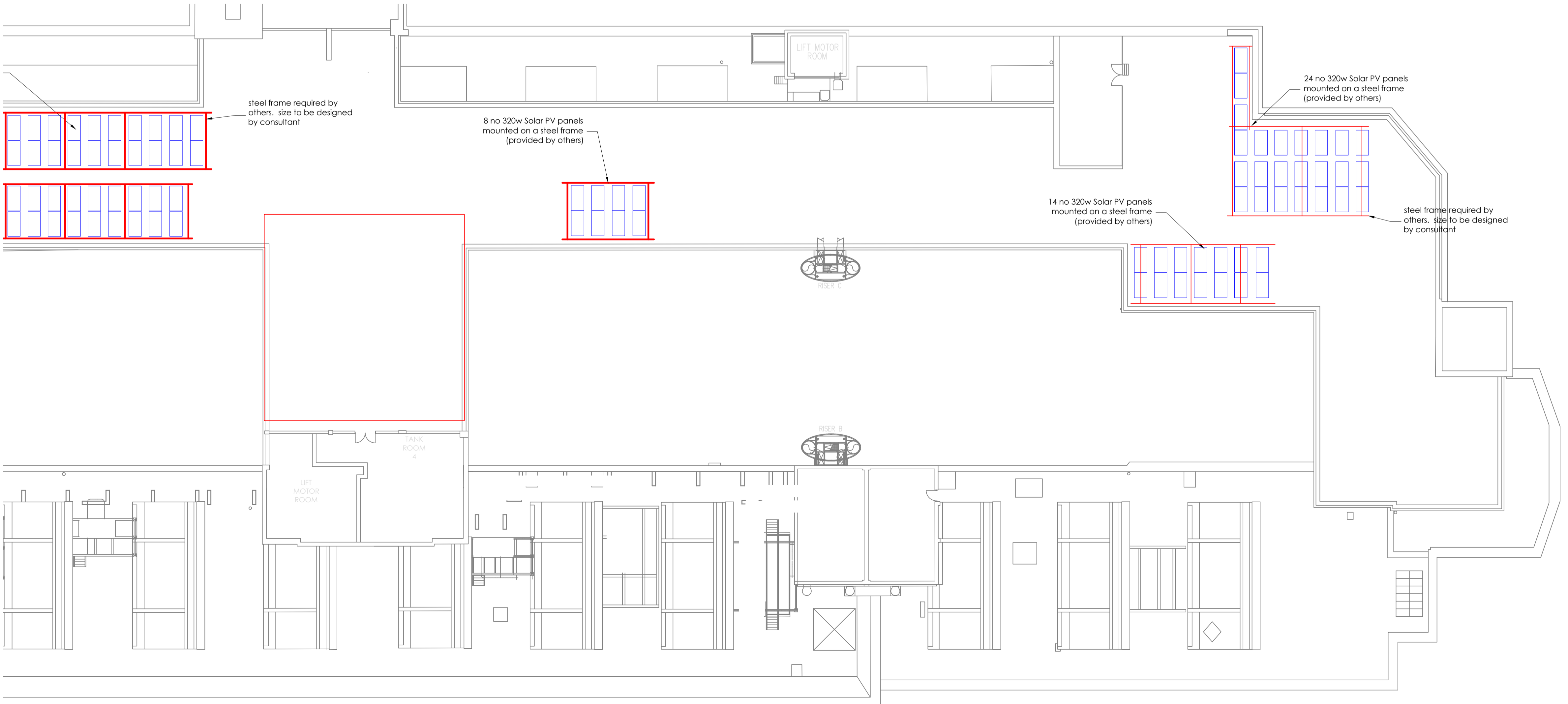


KEY

Solar PV panel 320W 1970mm x 995mm



| | | | |
|----|--|-----|-----------|
| C2 | CONSTRUCTION ISSUE - AMENDED TO SUIT PLANNING CONSULTANTS COMMENTS | PTK | MAR 2017 |
| C1 | CONSTRUCTION ISSUE | PTK | MAR 2017 |
| T2 | TENDER ISSUE PV PANEL LOCATION CHANGED | PTK | NOV 2016 |
| T1 | TENDER ISSUE | PTK | SEPT 2016 |
| P2 | PV PANEL AREA (M2) ADDED TO DRAWING | TT | JULY 2016 |
| P1 | ISSUED FOR PLANNING | TT | JULY 2016 |

| Revisions | Description | Ref | Eng | Date |
|-----------|-------------|-----|-----|------|
|-----------|-------------|-----|-----|------|

glp | mechanical and electrical consulting engineers

UNIT 5 HOWARTH COURT, GATEWAY CRESCENT, OLDHAM
BROADWAY BUSINESS PARK, CHADDERTON, OL9 9XB
Tel: 0161 681 7070
Fax: 0161 219 1968

| | | | |
|----------------------------|--|-------------------------------------|----------|
| Client | LAZARI INVESTMENTS LTD | | |
| Project Title | GREATER LONDON HOUSE NEW OFFICE SPACE | | |
| Drawing Title | EXISTING & PROPOSED MECHANICAL SERVICES LAYOUT - ROOF LEVEL | | |
| In Association with | FORME UK | | |
| Drawn by | TT | Scales | 1:200@A1 |
| Checked by | PTK | (work to figured dimensions) | |
| Date | JULY 2016 | | |
| DRG No. | 1607-M103 | Rev. C2 | |