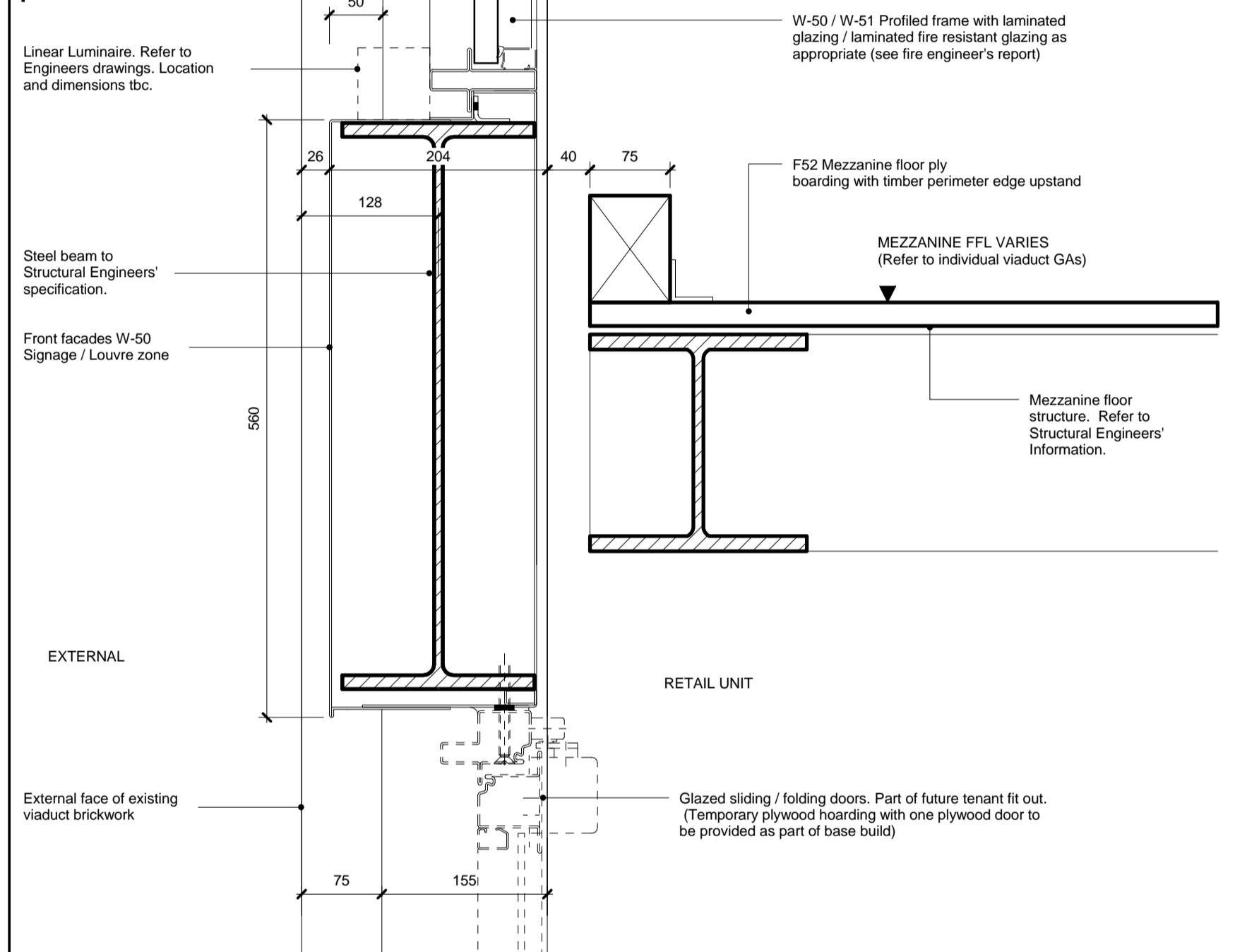
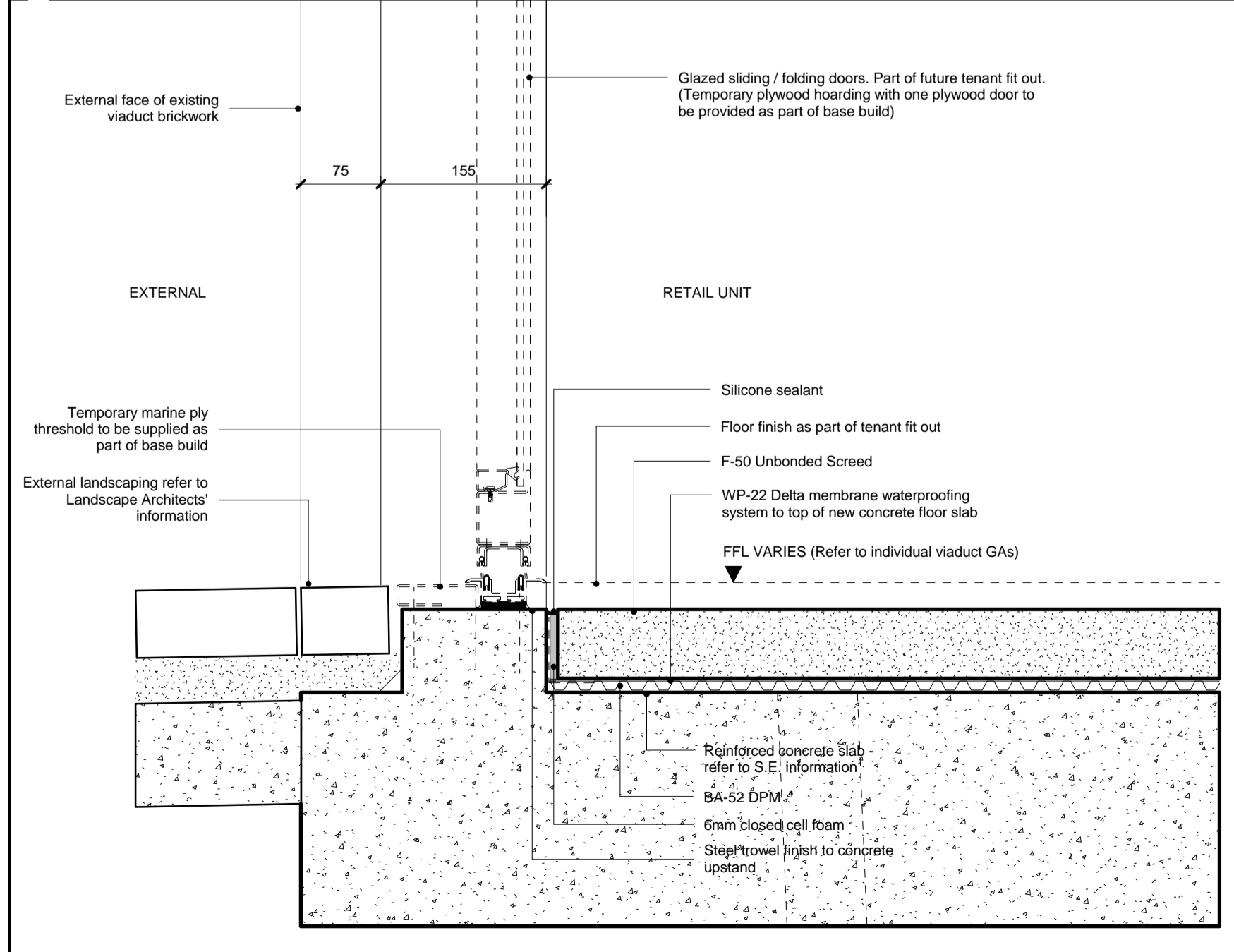


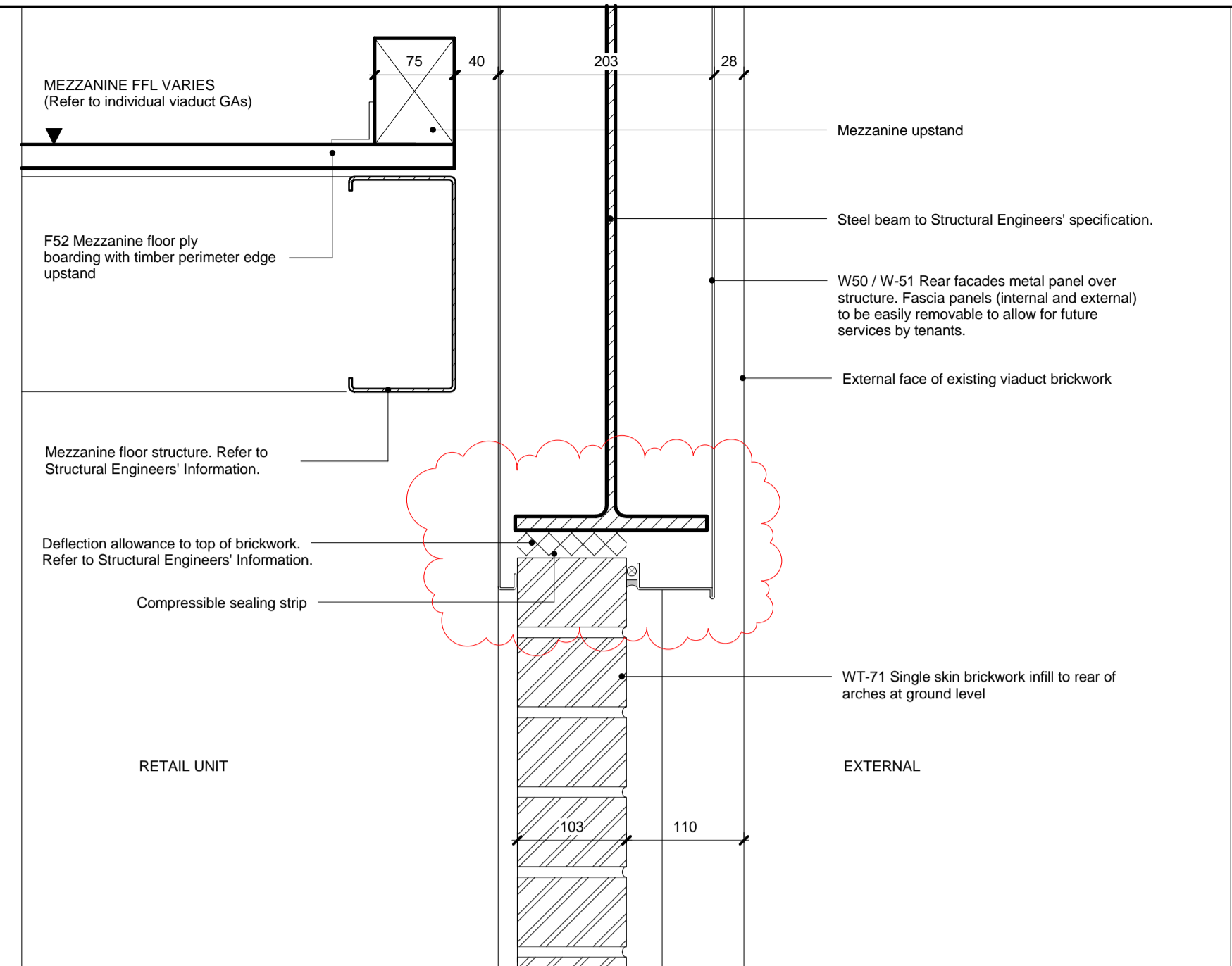
1 Section Detail: Head of fixed glazed screen to front and rear elevation



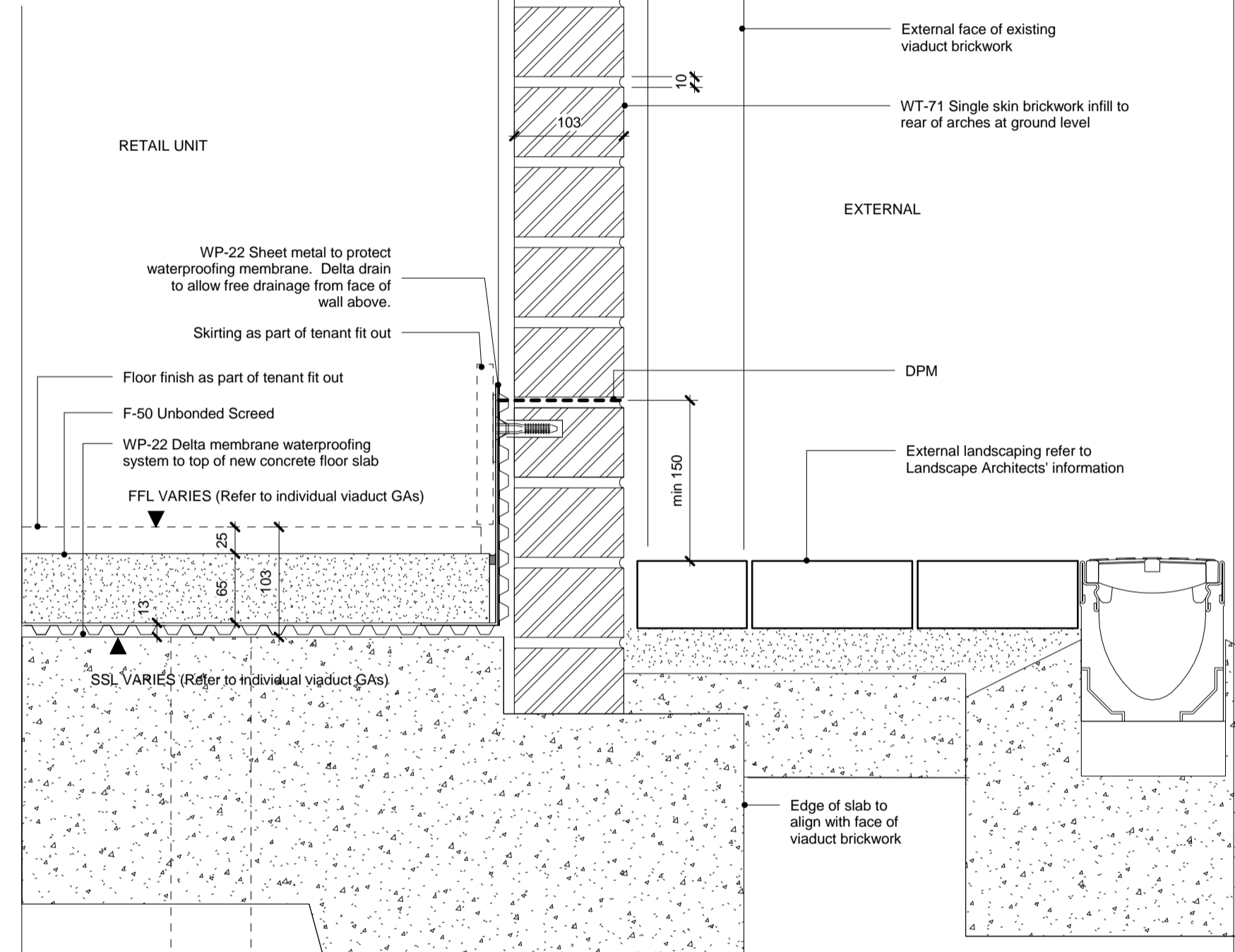
2 Section Detail: Section through signage detail and sliding folding door head



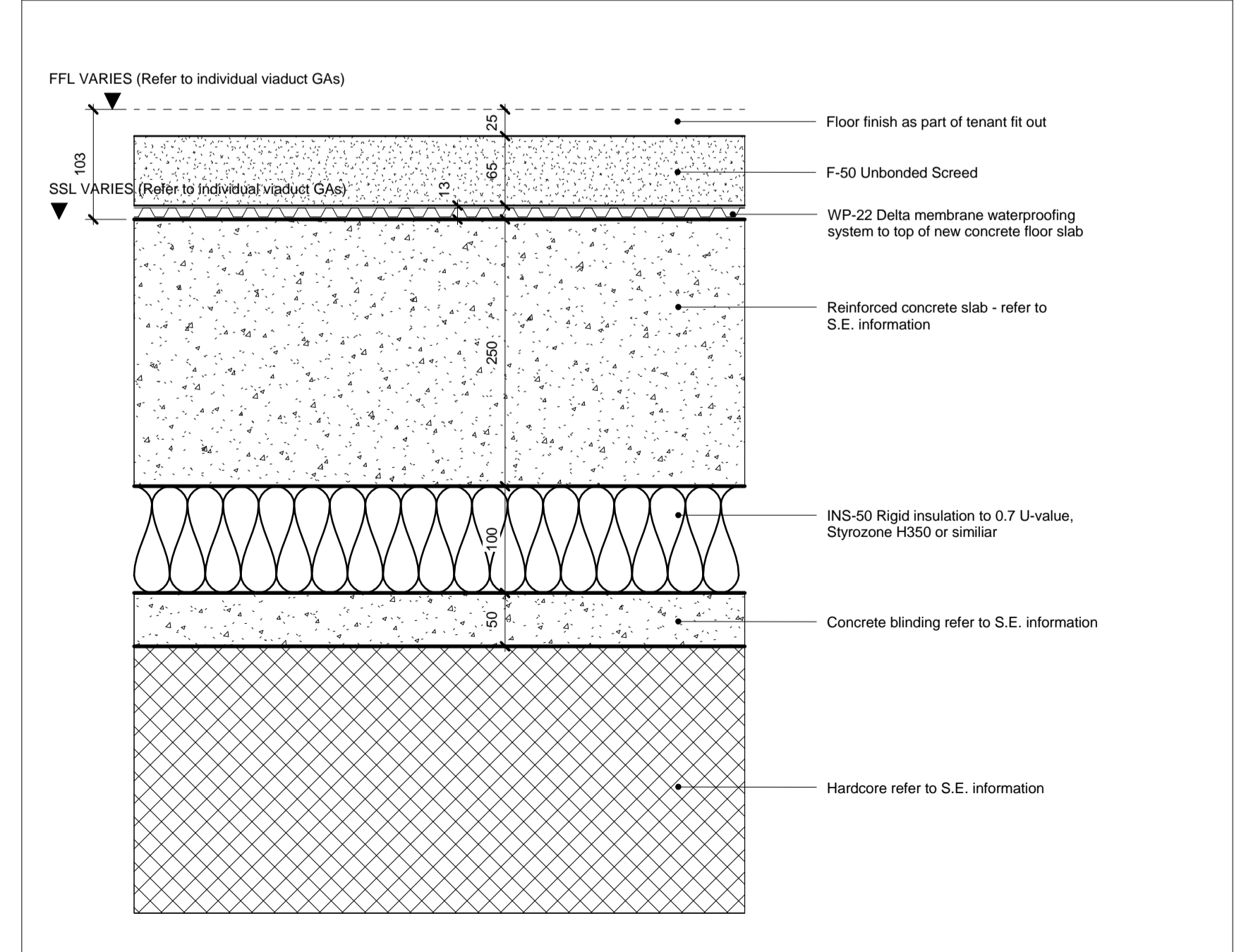
3 Section Detail: Front elevation sliding/folding door base detail



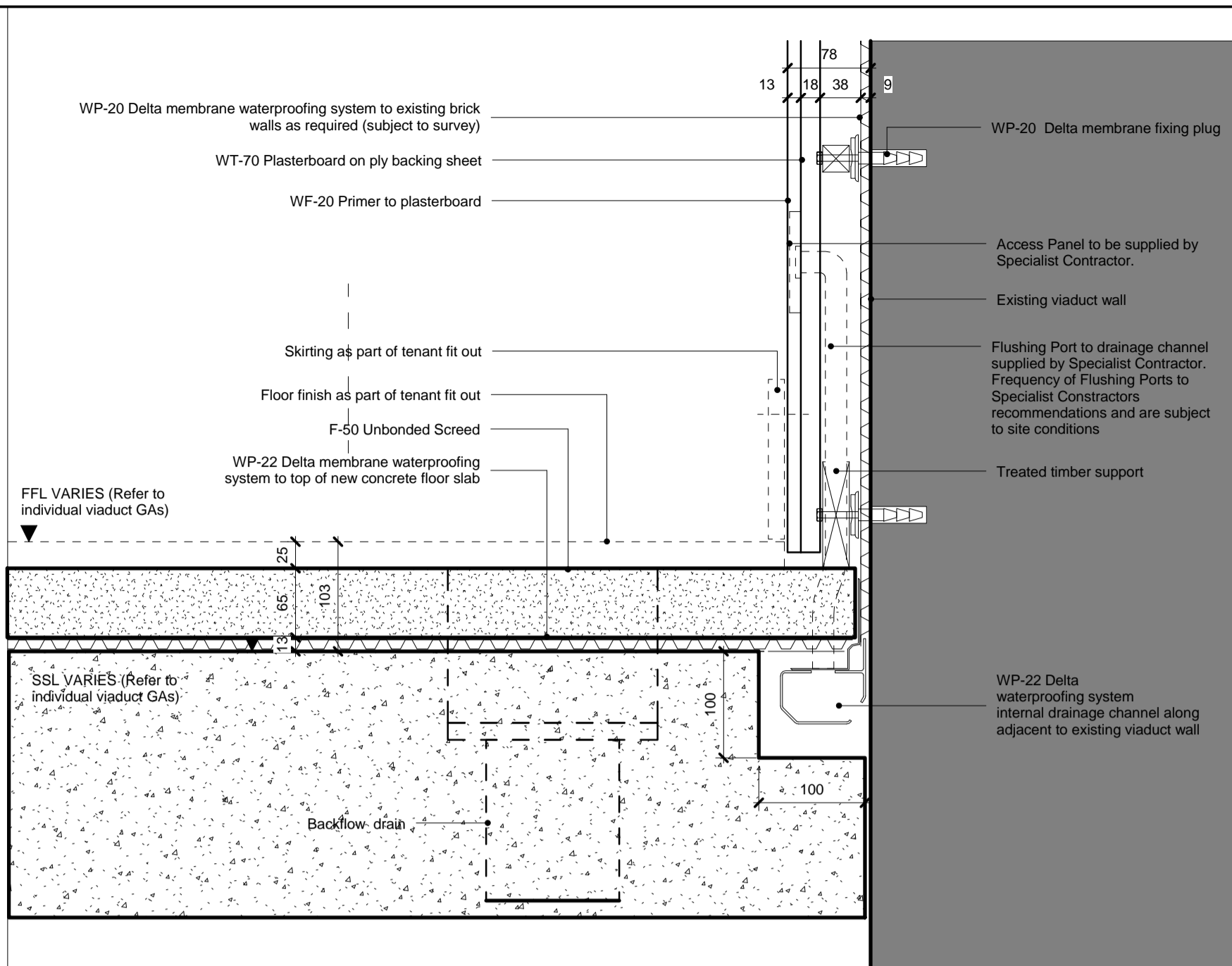
4 Section Detail - Servicing zone panel & head of brick infill to rear of viaducts



5 Section Detail: Base of rear brick infill facade



6 Section Detail - Typical arch unit floor build-up



7 Section Detail - Wall lining & drain detail



9 Section Detail - Column Base Detail

KEY

TECHNICAL REFERENCE SHEET

Refer to Detail Sheets for further information.
 Refer to Fire Engineers' information.
 Refer to Structural Engineers' information.
 Refer to Mechanical and Electrical Engineers' information.
 Refer to Hawley School Drawings for further information.
 Refer to Landscape Architect's information

NOTES

1. Structural layout to be confirmed by structural engineer
2. Upstand & downstand levels to be confirmed
3. Structural grid to be offset from existing viaduct walls
4. Refer to structural engineer's Movement & Tolerance Report for horizontal & vertical movement tolerances. Tolerances are also subject to condition of existing viaduct brickwork.
5. Slab Edge & Mezzanine Structure to be further coordinated with location of existing walls. Extent of walls are based on the following Survey Drawings prepared by KND Survey LTD **E1111 A G** (6 June 2011)
6. Dimensions to be confirmed on site by contractor
7. All viaducts to be surveyed, repaired and cleaned out by the main Contractor and Network Rail prior to construction

Revision C01 Notes

1. Steel angle supports to top of brick wall removed
2. Head of fixed glazed screed amended

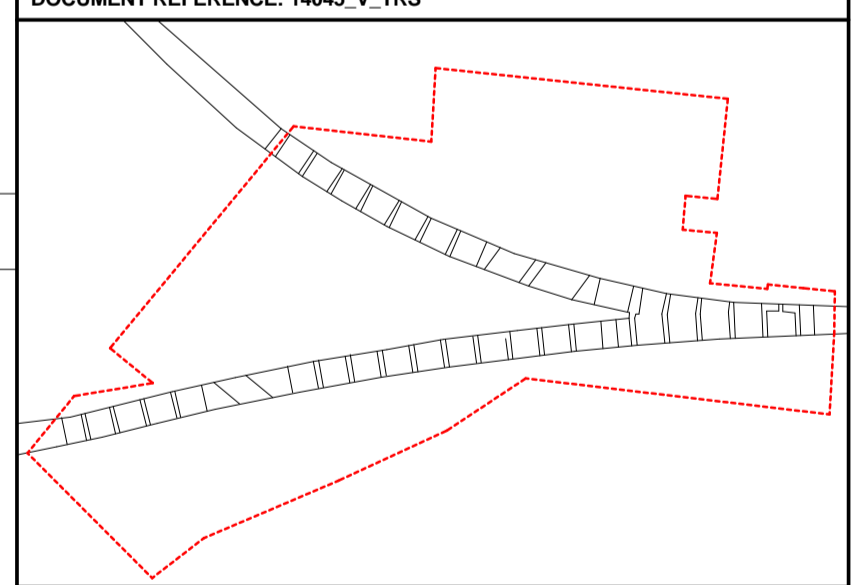
REV	DATE	DESCRIPTION
C01	08/12/16	For Construction
F01	24/06/16	For Coordination

CONSULTANTS	
CLIENT:	Stanley Sidings
CONTRACTOR:	Mace Group
STRUCTURAL ENGINEER:	Walsh Group
MECHANICAL ENGINEER:	AECOM
COST CONSULTANT:	Gardiner & Theobald
PROJECT MANAGER:	Gardiner & Theobald
ACOUSTIC CONSULTANT:	Arup
TRANSPORT CONSULTANT:	Arup
PLANNING CONSULTANT:	Gerald Eve
LANDSCAPE ARCHITECT:	Fabrik
CDM CO-ORDINATOR:	Gardiner & Theobald

NOTE

1. Do not scale from this drawing.
2. All dimensions to be checked on site by the contractor and such dimensions to be his responsibility. Report all drawing errors, omissions and discrepancies to the architect.
3. This document may be issued in an uncontrolled CAD format to enable others to use it as background information to make alterations and/or additions. In that instance the file will be accompanied by a PDF version. It is for those making such alterations and additions to ensure that they make use of current background information.
4. AHMM Ltd accepts no liability for any such alterations or additions to the background information or arising out of changes to background information which occur prior to alterations of additions being made.

REFER TO TECHNICAL REFERENCE SHEET FOR SPECIFICATION CLAUSES
DOCUMENT REFERENCE: 14045_V_TRS



LOCATION

ALLFORD HALL MONAGHAN MORRIS
 ARCHITECTS LTD
 5-23 OLD STREET, LONDON, EC1V 9HL
 TEL 020 7251 5261 FAX 020 7251 5123 WEB WWW.AHMM.CO.UK

job title
Camden Lock Village
 drawing title / location
Viaduct Typical Details - Sheet 2

drawn by	checked	scale	status
KT	AH	1:5 @ A1	For Construction
project	drawing no.	revision	
14045	VX_(31)_ 1011	C01	