



Crossrail Act 2008
Crossrail Ltd

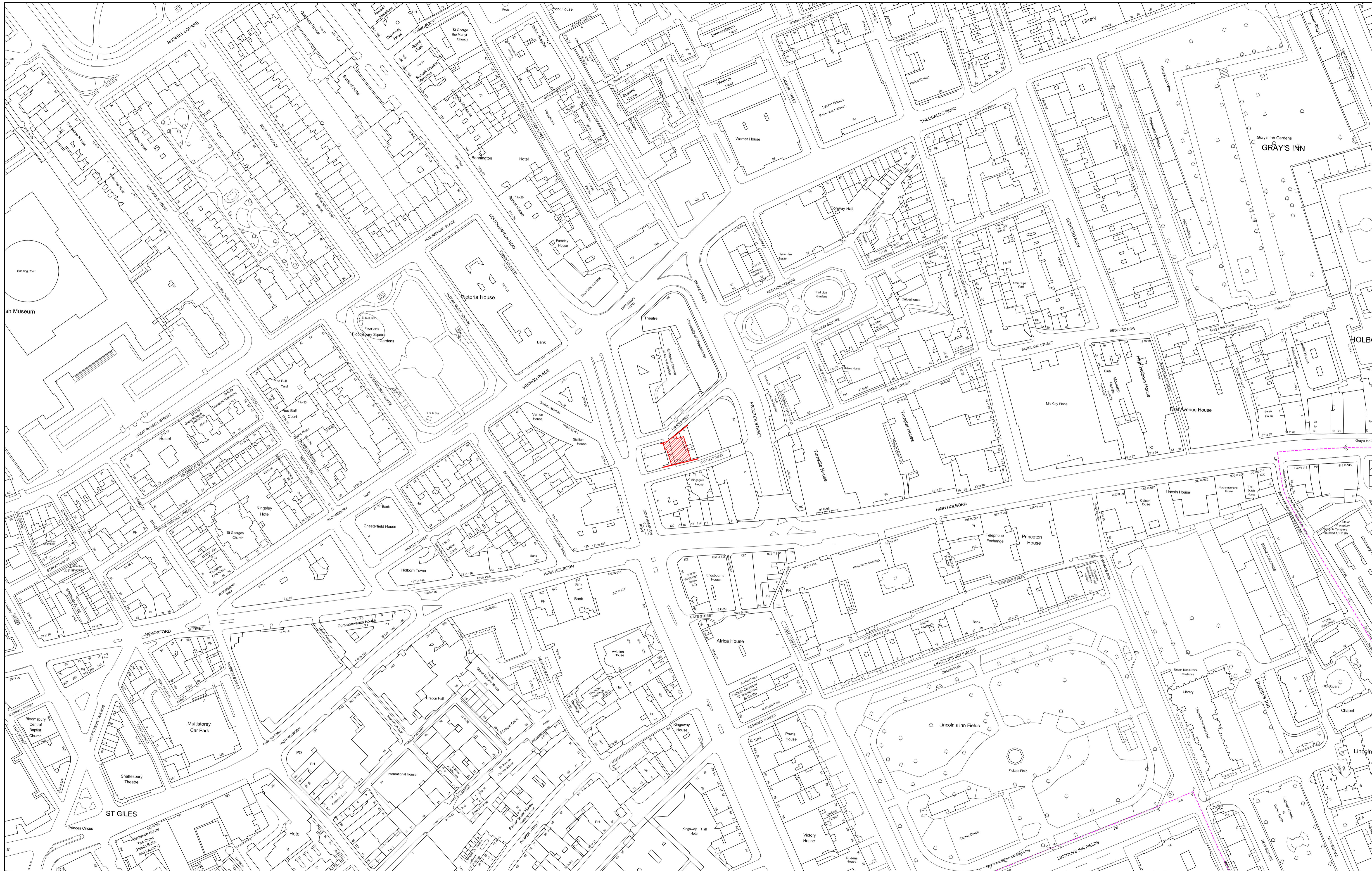
London Borough of Camden

FISHER STREET SHAFT
(Head House)

Schedule 7 Plans & Specifications
PLANS AND DRAWINGS

Submission Ref: CAM/3/14


Document Number:
C360-SKC-T-STP-CR086_WS095-50001



Rev.	Date	Description	By	Chkd	App	Auth
P01	26/04/2017	First Issue	ED	HT	NS	-

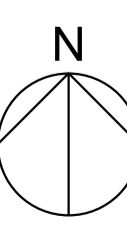
Notes


KEY

 Site Location

Scale: 1:1250@A1

25m 0 25m 50m 75m 100m 125m





Crossrail Limited
25 Canada Square
Canary Wharf
London
E14 5LQ

© Crossrail
www.crossrail.co.uk

Contract: Eleanor Street & Mile End Shafts (Civil Works)
Original: Costain Skanska JV
Location: Fisher Street Shaft
Title: Schedule 7 Plans & Specifications
Site Location Plan
(For Information Only)

By: E.DUDMAN
CHK: H.TORITANI
APP: N.SHARPE
Auth: ...

Scale: 1:1250@A1
Drawing and CAD file No: C360-SKC-A-DDL-CR086_SH003_1-12101
Rev: P01
Sustainability: S4

RESTRICTED

Safety, Health and Environmental Information
 Notes below are additional to hazards/risks normally associated with this type of work:

Construction
 Ci. N/A
 Cii. N/A
 Ciii. N/A

Operations
 Oi. N/A
 Oii. N/A
 Oiii. N/A

Maintenance
 Mi. N/A
 Mii. N/A
 Miii. N/A

Dismantling/Demolition (Future)
 Di. N/A
 Dii. N/A
 Diii. N/A

These notes are based on the use of experienced and competent contractors carrying out the work using an approved safe method of working.

ST. MARTINS COLLEGE

FISHER STREET

SR2 Fencing polyester powder coated For Approval
 Powder coated steel louvre For Approval
 Powder coated aluminium cladding with anti-graffiti coating Colour RAL 7037 Dusty Grey For Approval (Cladding Pattern Changed)
 Powder coated steel louvre door
 Powder coated steel louvre door
 Security door to courtyard behind

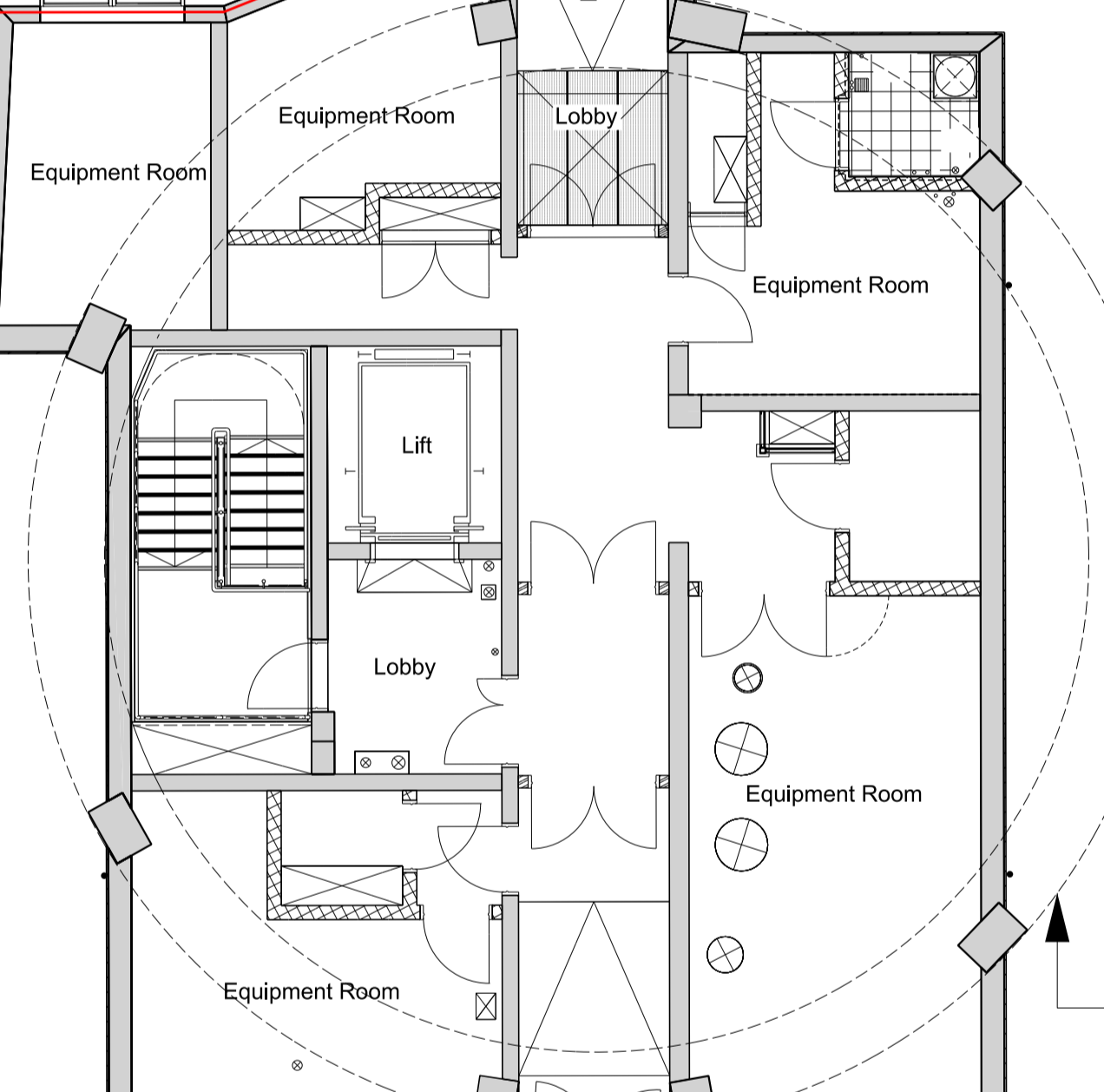
Temporary protective asphalt surfacing to allow surface drainage

Temporary protective asphalt surfacing to allow surface drainage

EDF BUILDING

8 - 10 SOUTHAMPTON ROW

SOUTHAMPTON ROW



15m internal diameter shaft below

SR2 Fencing polyester powder coated For Approval
 Powder coated steel louvre

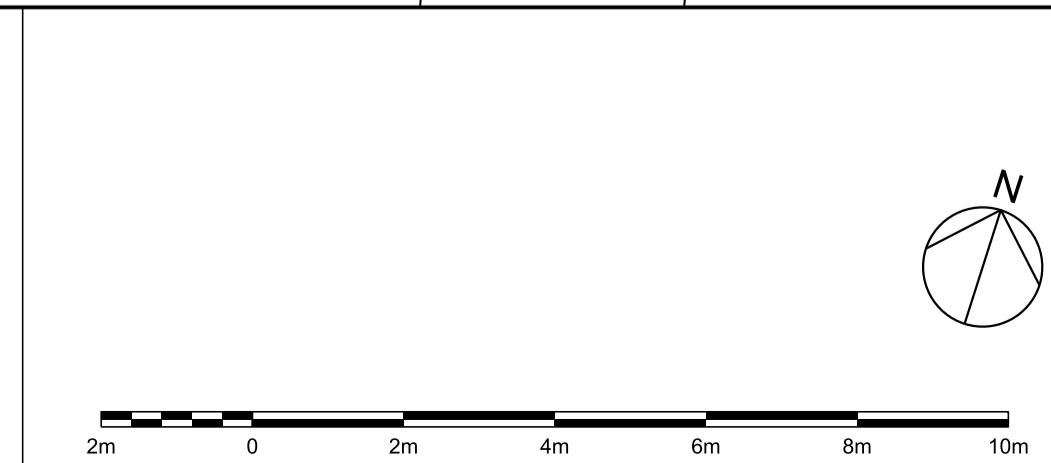
Secure gate to courtyard behind
 SR2 Fencing polyester powder coated For Approval
 Powder coated steel louvres
 Intervention access: Powder coated steel door
 Powder coated aluminium cladding with anti-graffiti coating Colour RAL 7037 Dusty Grey For Approval (Cladding Pattern Changed)

CATTON STREET

Rev.	Date	Description	By	Chkd	App	Auth
P01	26/04/2017	First Issue	ED	HT	NS	-

Notes

KEY
 Proposed Amendments to Original Consent



Contract: Eleanor Street & Mile End Shafts (Civil Works)
 Originator: Costain Skanska JV
 Location: Fisher Street Shaft

Crossrail
 Crossrail Limited
 25 Canada Square
 Canary Wharf
 London
 E14 5LQ

© Crossrail
 www.crossrail.co.uk

Title: Schedule 7 Plans & Specifications
 C360 - Level 00 Site Plan

By: E.DUDMAN
 Chk: H.TORITANI
 App: N.SHARPE
 Auth: ...

Scale: 1:100@ A1
 Drawing and CAD file No: C360-SKC-A-DDA-CR086_SH003_1-20104
 Rev: P01
 Suitability: S4

RESTRICTED

Safety, Health and Environmental Information
 Notes below are additional to hazards/risks normally associated with this type of work:

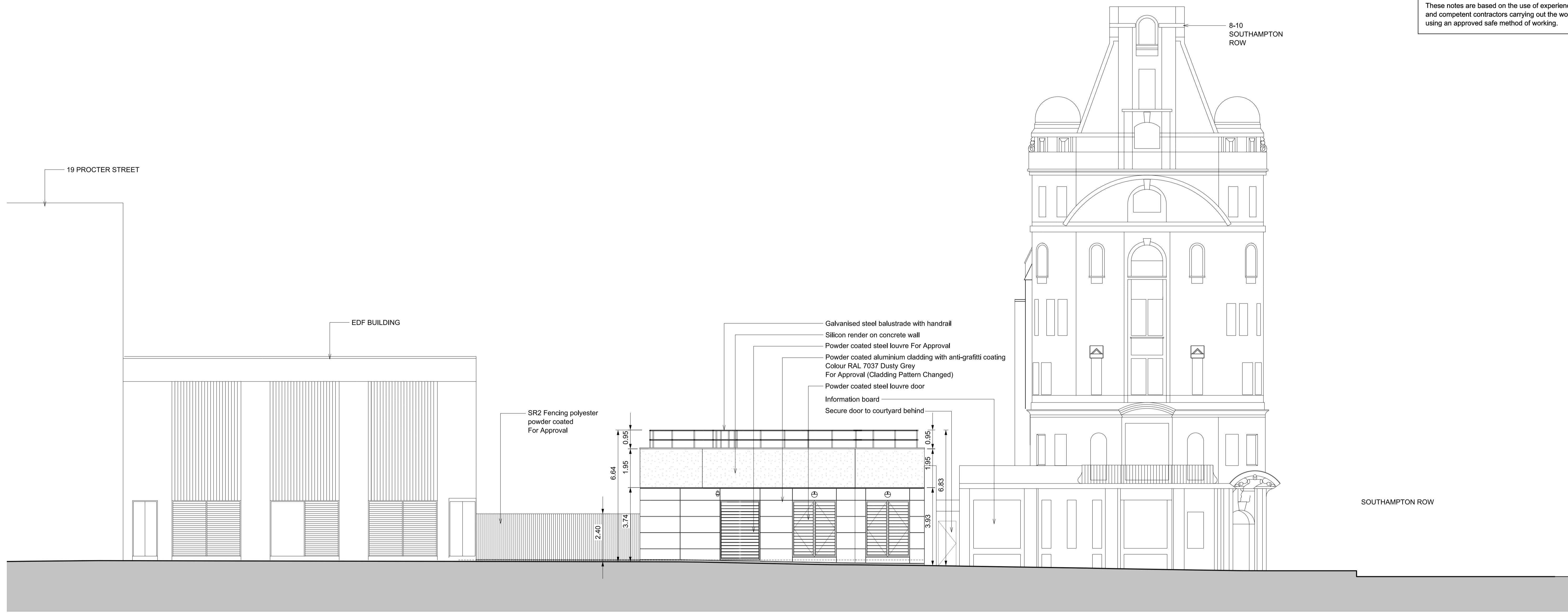
Construction
 Ci. N/A
 Cii. N/A
 Ciii. N/A

Operations
 Oi. N/A
 Oii. N/A
 Oiii. N/A

Maintenance
 Mi. N/A
 Mii. N/A
 Miii. N/A

Dismantling/Demolition (Future)
 Di. N/A
 Dii. N/A
 Diii. N/A

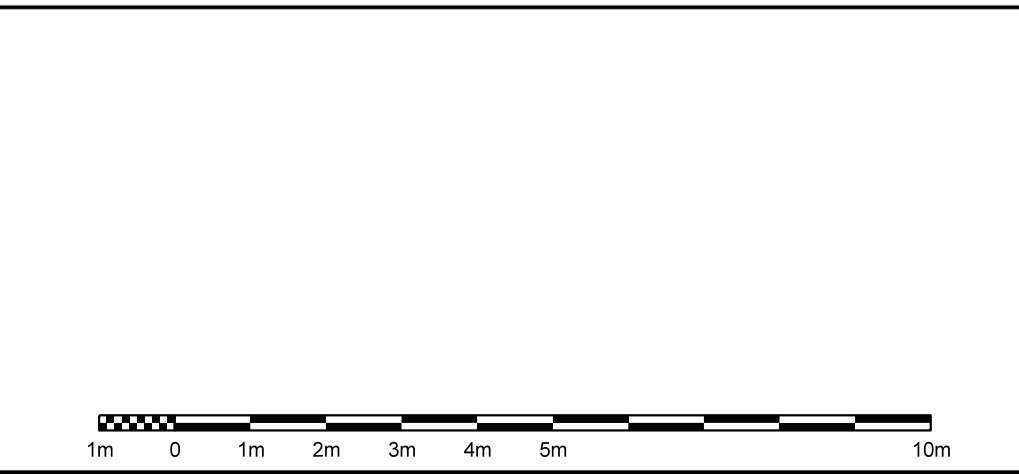
These notes are based on the use of experienced and competent contractors carrying out the work using an approved safe method of working.



01 North Elevation (Fisher Street)
 20401 1:100

Rev.	Date	Description	By	Chkd	App	Auth
P01	26/04/2017	First Issue	ED	HT	NS	-

Notes



Crossrail
 Crossrail Limited
 25 Canada Square
 Canary Wharf
 London
 E14 5LQ
 © Crossrail
 www.crossrail.co.uk

Contract: Eleanor Street & Mile End Shafts (Civil Works)
 Originator: Costain Skanska JV
 Location: Fisher Street Shaft

Title: Schedule 7 Plans & Specifications
 C360 - North Elevation

By: E.DUDMAN
 Chk: H.TORITANI
 App: N.SHARPE
 Auth: ...

Scale: 1:100@ A1
 Drawing and CAD file No: C360-SKC-A-DDC-CR086_SH003_Z-20501
 Rev: P01
 Suitability: S4

RESTRICTED
 Fit for authorisation

Safety, Health and Environmental Information
 Notes below are additional to hazards/risks normally associated with this type of work:

Construction
 Ci. N/A
 Cii. N/A
 Ciii. N/A

Operations
 Oi. N/A
 Oii. N/A
 Oiii. N/A

Maintenance
 Mi. N/A
 Mii. N/A
 Miii. N/A

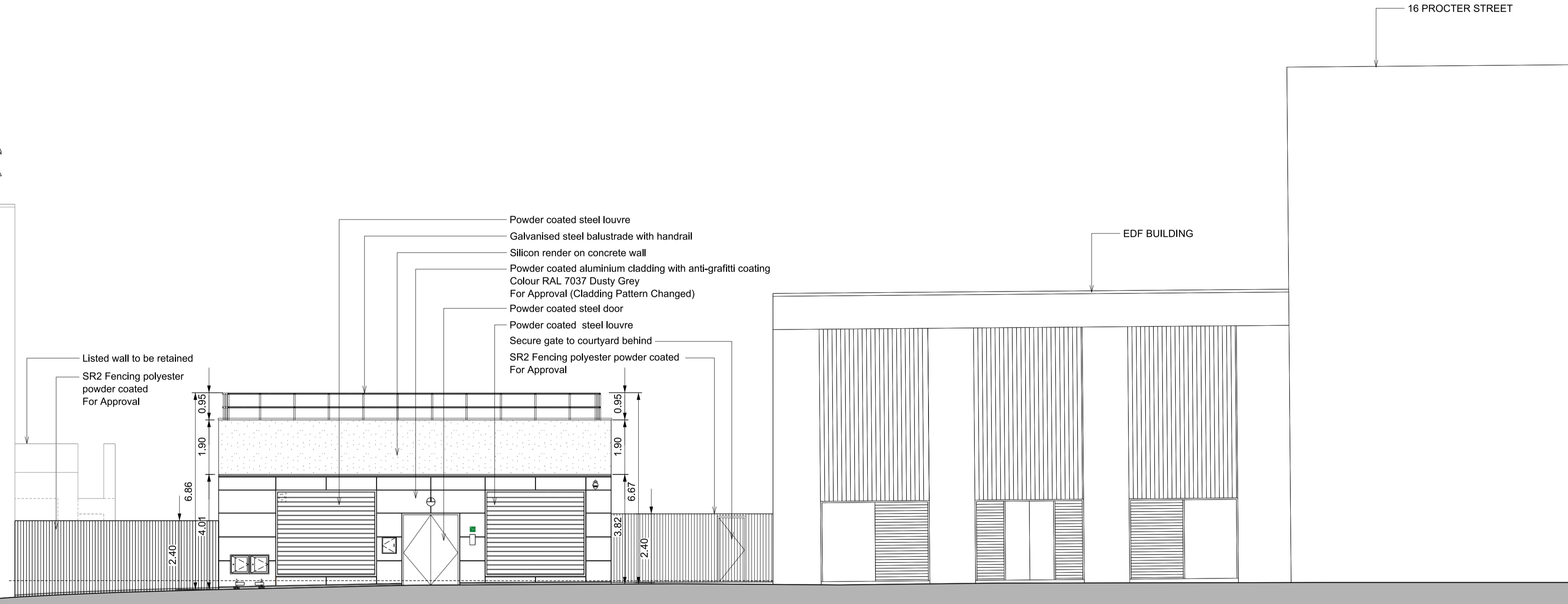
Dismantling/Demolition (Future)
 Di. N/A
 Dii. N/A
 Diii. N/A

These notes are based on the use of experienced and competent contractors carrying out the work using an approved safe method of working.

8-10 SOUTHAMPTON ROW



SOUTHAMPTON ROW

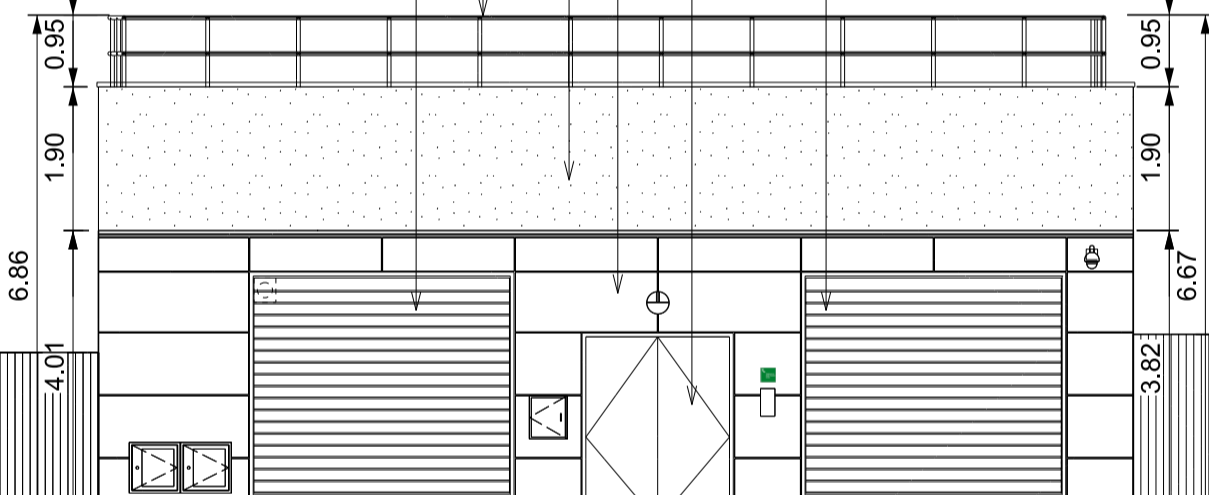


16 PROCTER STREET

EDF BUILDING

Listed wall to be retained
 SR2 Fencing polyester powder coated
 For Approval

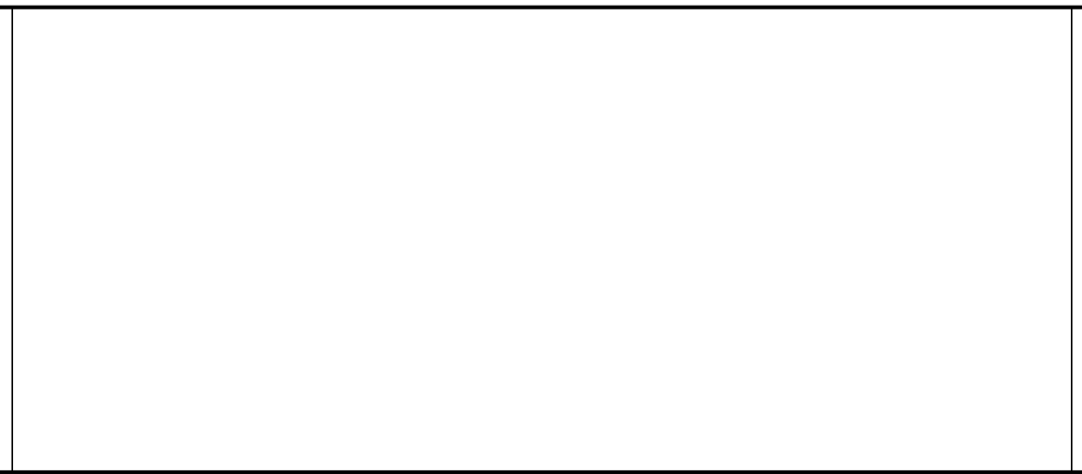
Powder coated steel louvre
 Galvanised steel balustrade with handrail
 Silicon render on concrete wall
 Powder coated aluminium cladding with anti-graffiti coating
 Colour RAL 7037 Dusty Grey
 For Approval (Cladding Pattern Changed)
 Powder coated steel door
 Powder coated steel louvre
 Secure gate to courtyard behind
 SR2 Fencing polyester powder coated
 For Approval



01 South Elevation (Catton Street)
 20402 1:100

Rev.	Date	Description	By	Chkd	App	Auth
P01	26/04/2017	First Issue	ED	HT	NS	-

Notes



Contract: Eleanor Street & Mile End Shafts (Civil Works)
 Originator: Costain Skanska JV
 Location: Fisher Street Shaft

By: E.DUDMAN
 Chk: H.TORITANI
 App: N.SHARPE
 Auth: ...

Scale: 1:100@ A1
 Drawing and CAD file No: C360-SKC-A-DDC-CR086_SH003_Z-20502
 Rev: P01
 Suitability: S4

Crossrail
 Crossrail Limited
 25 Canada Square
 Canary Wharf
 London
 E14 5LQ

© Crossrail
 www.crossrail.co.uk

RESTRICTED
 FT for authorisation