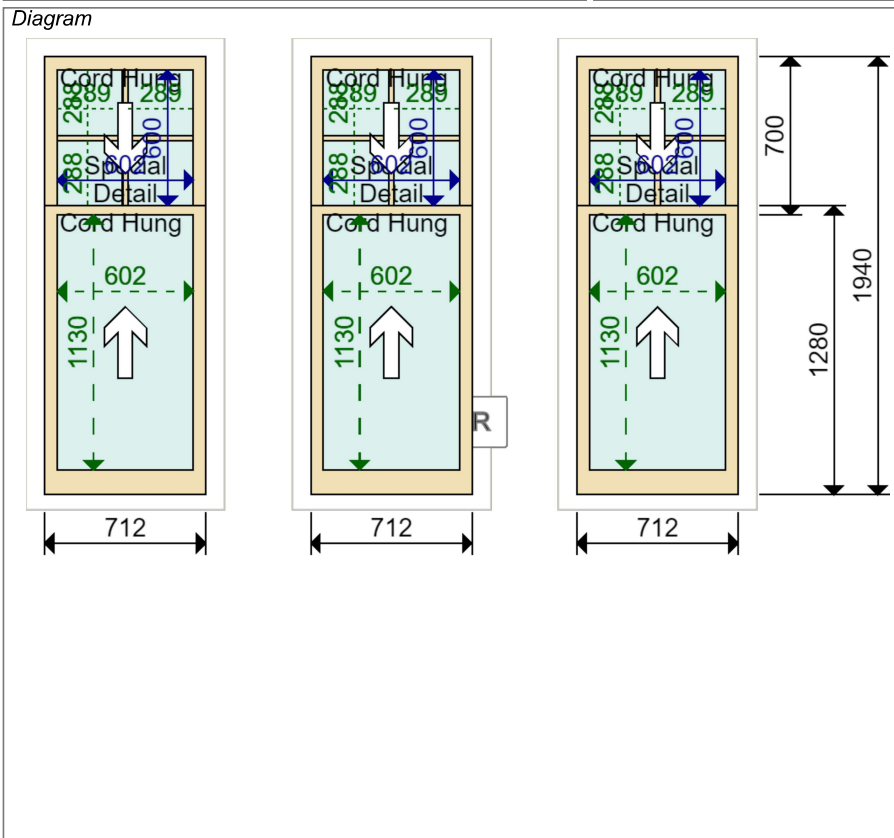


JOINERY DETAIL SHEET

3 Pairs of Sashes to Cord Hung Sash Window

Customer Krueger	Job No D31209	Item No 7	Sheet 1 of 3
-----------------------------------	--------------------------------	----------------------------	-------------------------------



Sectional Details

Sash Head	60 mm	
Sash Stile	55 mm	
Sash Btm Rail	110 mm	Square
Sash Midrail	40 mm	
Sash Thickness	45 mm	
Top Sash Horn	Template Attached	
Btm Sash Horn	No horn	

Location
Ground Floor Front Living Room

Glazing Bar	24 mm with 4 mm Nib
Profile	Ovolo
Moulding Cutter	8 x 10 with 5 mm shoulder
Glazing Rebate	15 x 28 mm

Material
Accoya

Quantity
3 Pairs

Ironmongery
 3 x Fitch Catch SC
 3 x Lock Chubb Window Key
 12 x Pulley Wheel SS
 12 x Rola Lock Back Plate Fastener
 6 x Rola Lock SC
 6 x Sash Lift SC

Glazing

	Internal Pane	Spacer	External Pane
Top	4mm Planitherm	10mm	4mm Low Iron
Btm	4mm Planitherm Toughened	10mm	4mm Low Iron

Putty Line Bead White Tape, White Spacer Argon Filled

Paint Finish
 Internal Standard White
 External Standard White

Production Notes
 *ARCHED MEETING RAIL TO EXTERNAL TOP SASH - SEE SHEET 2.
 *MEETING RAIL MADE 40/95mm.

Installation Notes
 Installed: Internally
 1. OUT OF SQ HORIZ 10mm.

Job Tracking
 Order received: 04-04-2017 Print date: 11-04-2017
 Sold by: David Farebrother Last modified by: Chris Jewiss
 Surveyed by: Chris Jewiss Last modified date: 11-04-2017

23.9 lb, 43.4 lb, 23.9 lb, 43.4 lb, 23.9 lb, 43.4 lb (101.54 lb in lead)

KRUEGER

Job no 31209

Sheet 2 of 3

Drawn by: C JEWISS
scale: 1:10 at A3
Issue No: 01
Date: APRIL 2017

Material: See Sheet 1

Finish - Int: See Sheet 1
Ext: See Sheet 1

Glass - SEE SHEET 1

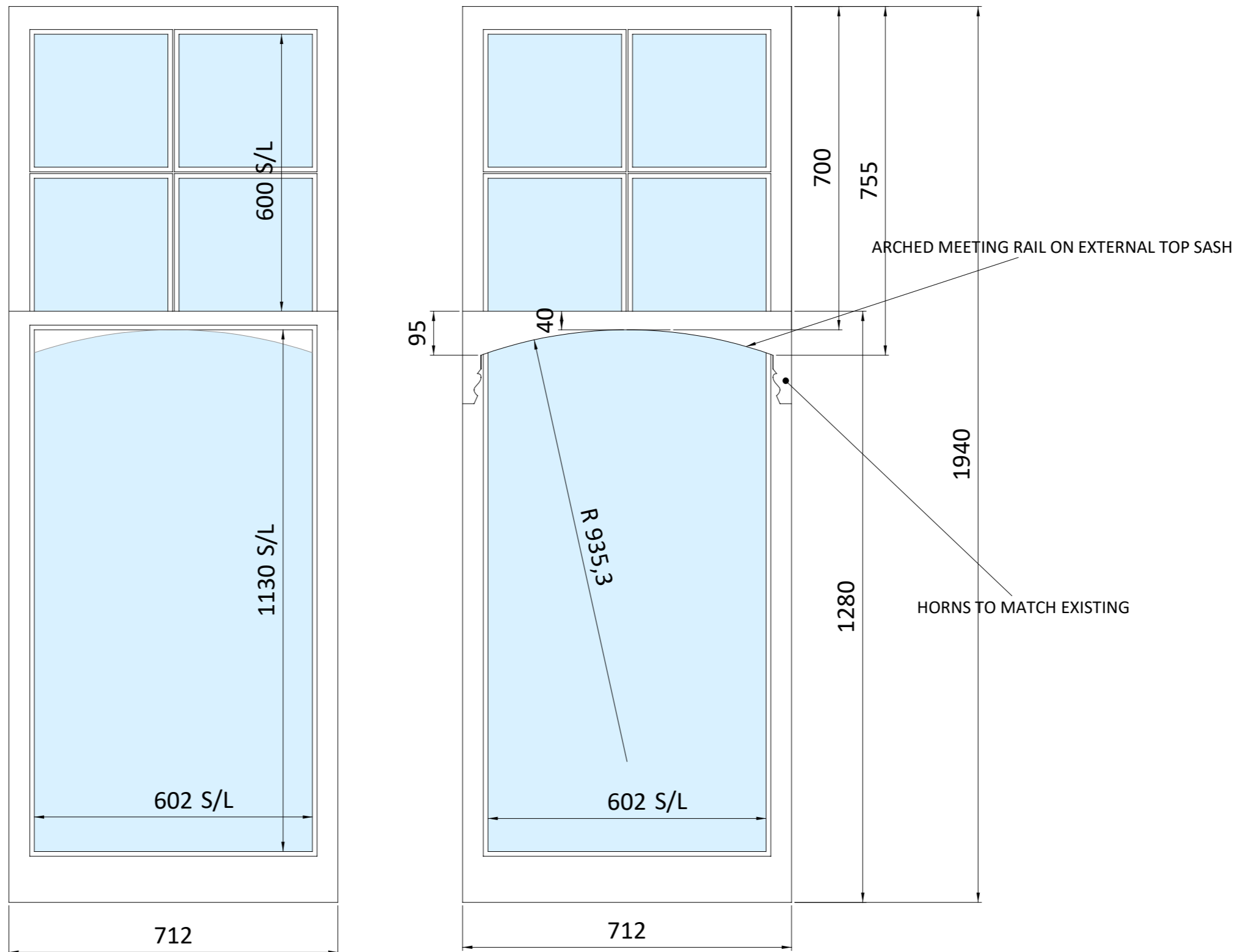
Notes:

The Sash Window Workshop
4 Kiln Lane, Bracknell,
Berks RG12 1NA
tel: +44 (0)1344 868668
fax: +44 (0)1344 868858
email: jewiss@sashwindow.com

ELEVATIONS NEW SASHES

INTERNAL VIEW

EXTERNAL VIEW

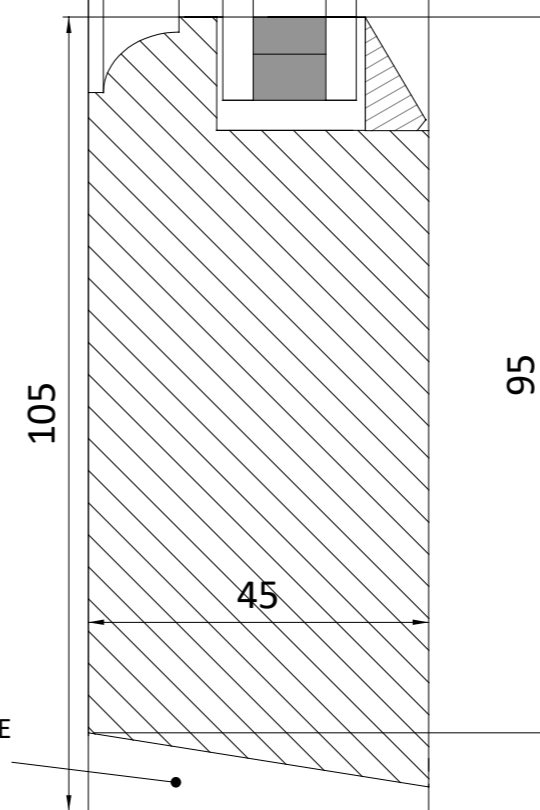
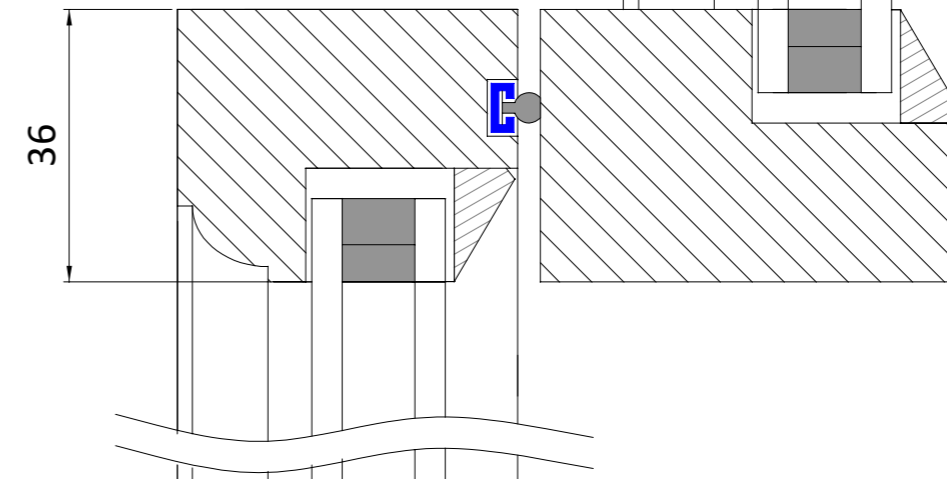
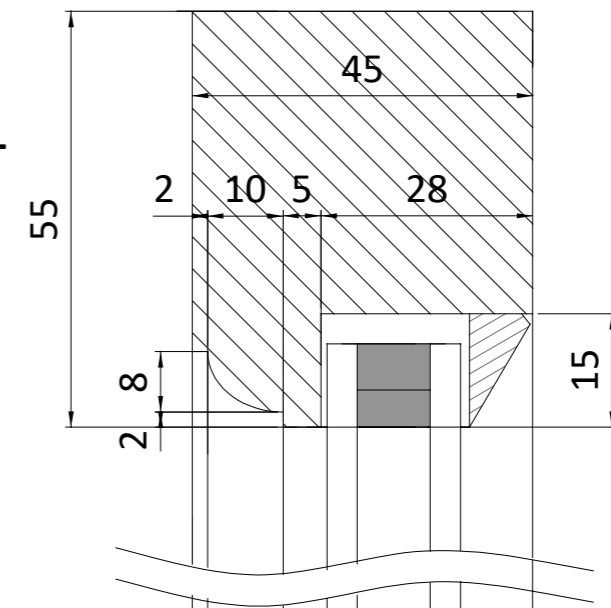


X 3 PAIRS OF SASHES

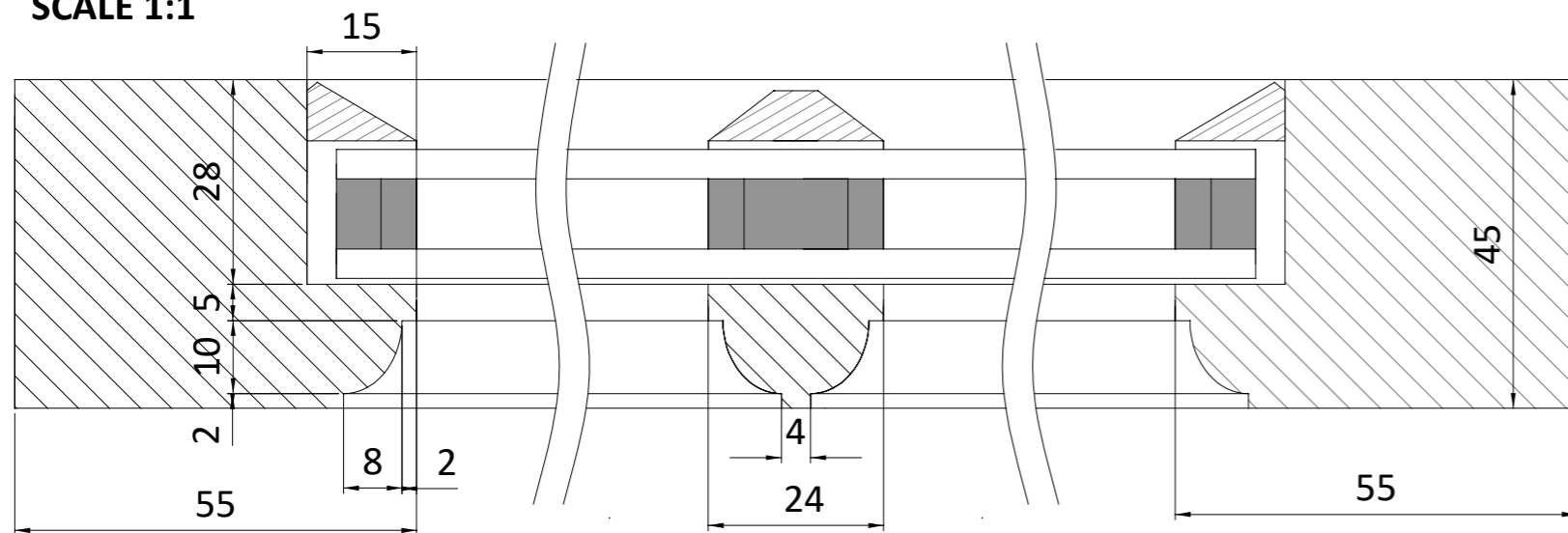
ITEM 7

SOME STILES, HEADS AND BOTTOM RAILS WILL BE MANUFACTURED OVER SIZE TO ALLOW FOR TRIMMING FOR OUT OF SQUARE FRAMES. THE DIMENSIONS ON THESE DRAWINGS SHOW THE FINISHED SIZES ONCE FITTED.

**SECTION THROUGH HEAD, MEETING RAIL AND BOTTOM RAIL
SCALE 1:1**



**HORIZONTAL SECTION THROUGH STILE AND GLAZING BAR
SCALE 1:1**



CHAMFERED ON SITE TO SUIT CILL

KRUEGER

Job no 31209

Sheet 3 of 3

Drawn by: C JEWISS
scale: 1:1 at A3
Issue No: 01
Date: APRIL 2017

Material: See Sheet 1

Finish - Int: See Sheet 1
Ext: See Sheet 1

Glass - SEE SHEET 1

Notes:

The Sash Window Workshop
4 Kiln Lane, Bracknell,
Berks RG12 1NA
tel: +44 (0)1344 868668
fax: +44 (0)1344 868858
email: jewiss@sashwindow.com

SECTIONAL DETAILS FOR
NEW SASHES
45mm THICK

ITEM 7