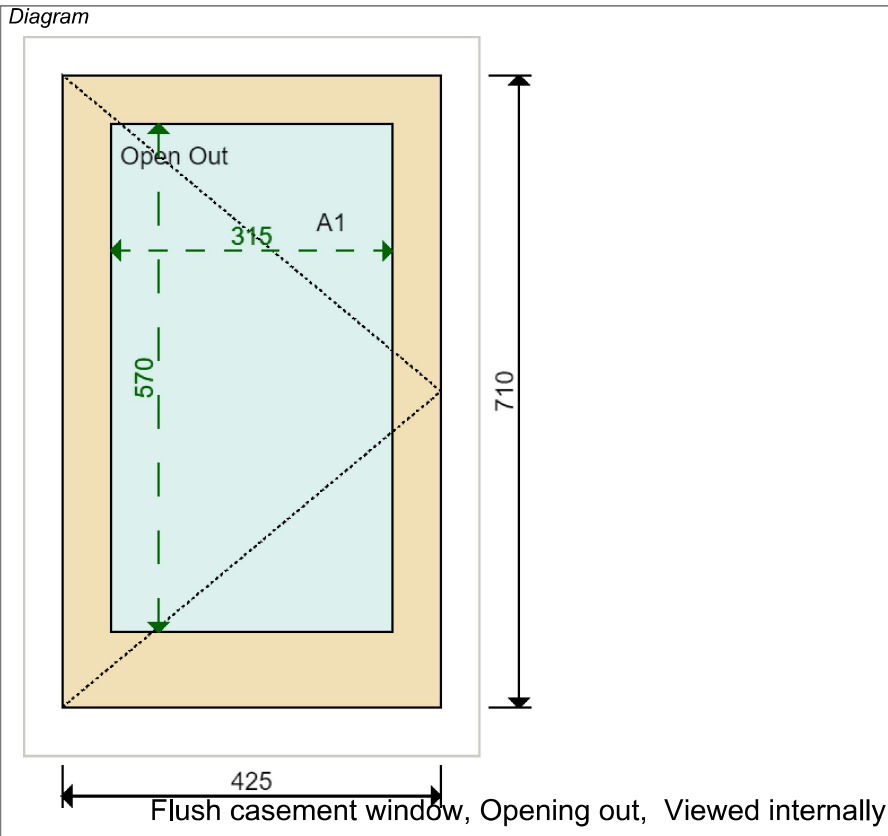


# JOINERY DETAIL SHEET


## 1 New Casement Sash to Existing Frame

<i>Customer</i> <b>Krueger</b>	<i>Job No</i> <b>D31209</b>	<i>Item No</i> <b>6</b>	<i>Sheet</i> <b>1 of 2</b>
-----------------------------------	--------------------------------	----------------------------	-------------------------------



*Sectional Details*

Sash Head	55 mm	
Sash Stile	55 mm	
Sash Btm Rail	85 mm	Square
Sash Thickness	36 mm	



*Location*  
**First Floor RHS Bathroom**

*Material*  
**Accoya**

*Quantity*  
**1 Sash**

Glazing Bar	N/A
Profile	Ovolo
Moulding Cutter	8 x 8 with 3 mm shoulder
Glazing Rebate	15 x 23 mm

*Ironmongery*

- 1 x Casement Window Lock White
- 1 x Handle Casement Bulb End & Mortice Plate SC
- 2 x Hinge Butt SC 3 inch
- 1 x Lock Chubb Window Key
- 1 x Stay Casement Bulb End SC 12 inch

*Glazing*

	Internal Pane	Spacer	External Pane
Case	4mm Planitherm Toughened	5mm	4mm Acid Etched
Putty Line Bead	White Tape, White Spacer		Argon Filled

*Paint Finish*

Internal	Standard White
External	Standard White

*Production Notes*

2 | 8 | 3 | 23

*Installation Notes*

Installed: Internally

1. STOPS PART OF FRAME. NEW CASEMENT WILL PROJECT 5mm BEYOND EXTERNAL FRAME. TRY TO REBATE STOPS IF POSSIBLE. BISCUIT CUT CASEMENT SASH.

*Job Tracking*

Order received: 04-04-2017	Print date: 11-04-2017
Sold by: David Farebrother	Last modified by: Chris Jewiss
Surveyed by: Chris Jewiss	Last modified date: 11-04-2017

Internal Hazard:	Item Over Bath
External Access:	Item Easily Accessible

**KRUEGER**

Job no 31209

Sheet 2 of 2

Drawn by: C JEWISS  
scale: 1:1 at A3  
Issue No: 01  
Date: APRIL 2017

Material: See Sheet 1

Finish - Int: See Sheet 1  
Ext: See Sheet 1

Glass - SEE SHEET 1

Notes:

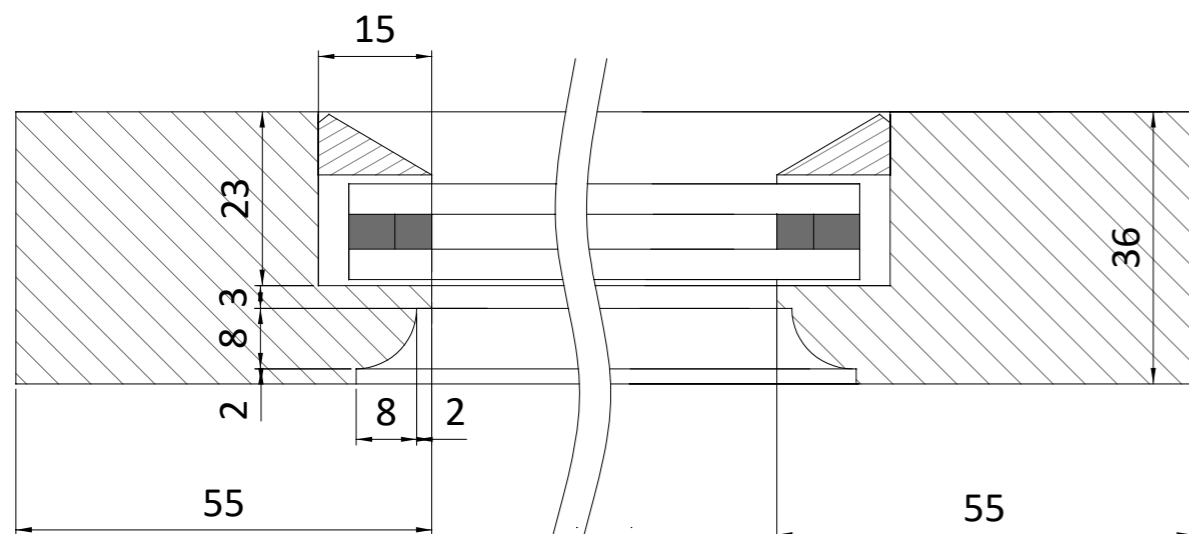
The Sash Window Workshop  
4 Kiln Lane, Bracknell,  
Berks RG12 1NA  
tel: +44 (0)1344 868668  
fax: +44 (0)1344 868858  
email: jewiss@sashwindow.com

SECTIONAL DETAILS FOR  
NEW SASHES  
36mm THICK

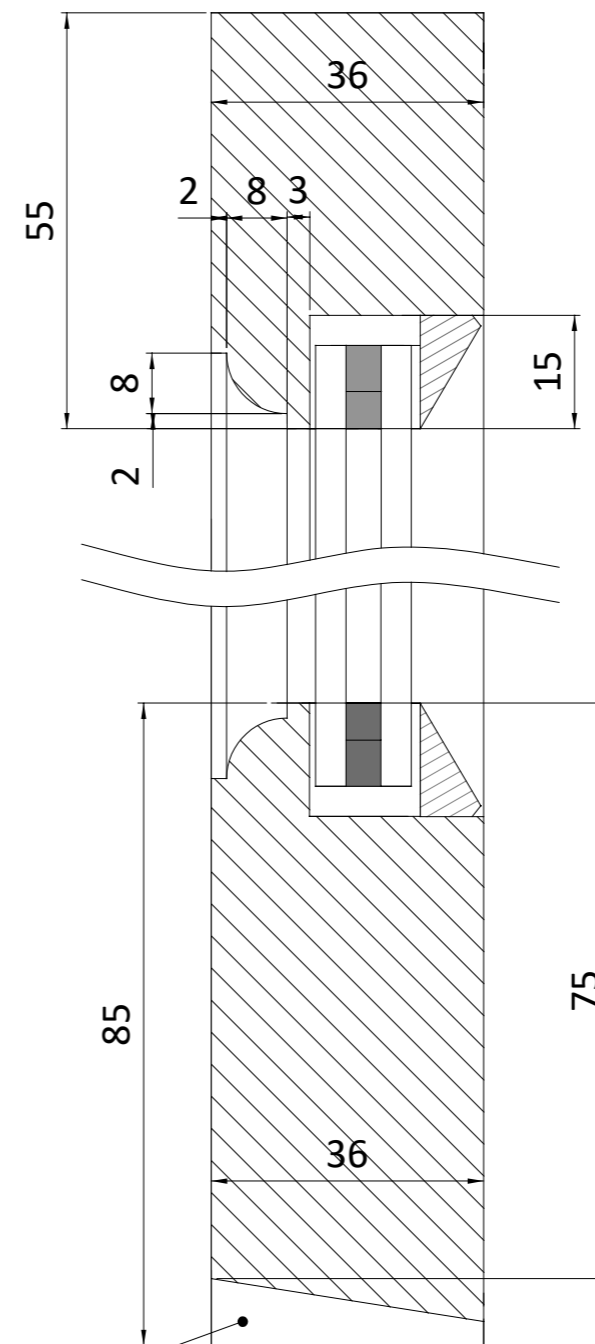
**ITEM 6**

SOME STILES, HEADS AND BOTTOM RAILS WILL BE MANUFACTURED OVER SIZE  
TO ALLOW FOR TRIMMING FOR OUT OF SQUARE FRAMES. THE DIMENSIONS ON  
THESE DRAWINGS SHOW THE FINISHED SIZES ONCE FITTED.

**HORIZONTAL SECTION  
THROUGH STILE  
SCALE 1:1**



**SECTION THROUGH  
HEAD AND BOTTOM RAIL  
SCALE 1:1**



CHAMFERED ON SITE  
TO SUIT CILL