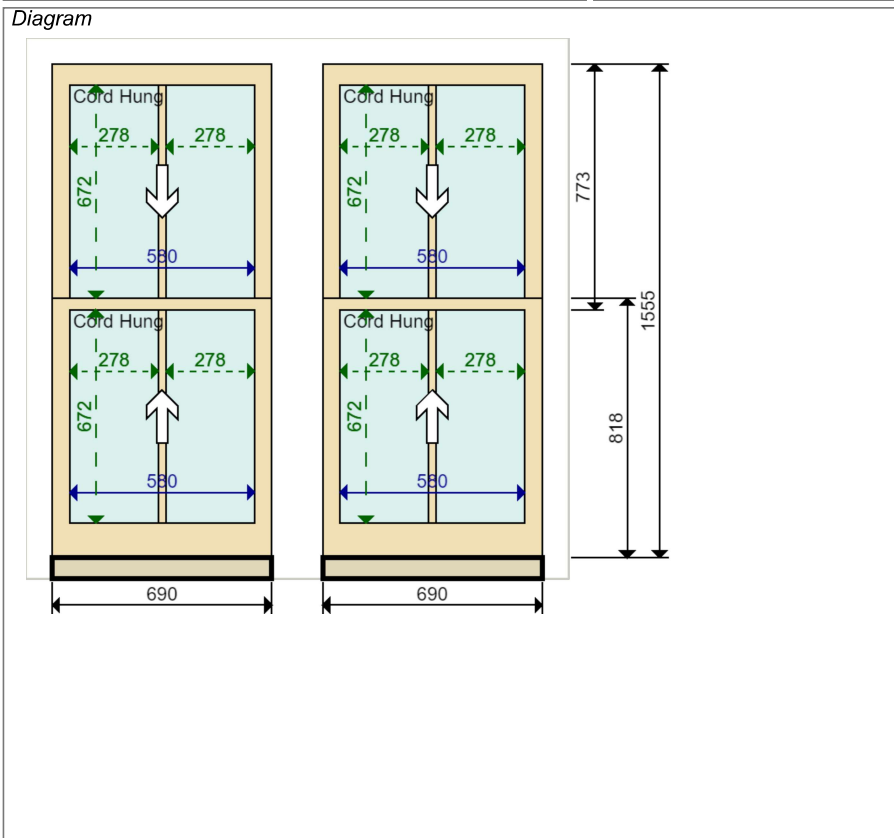


JOINERY DETAIL SHEET

2 Pairs of Sashes to Cord Hung Sash Window

Customer Krueger	Job No D31209	Item No 3	Sheet 1 of 2
-----------------------------------	--------------------------------	----------------------------	-------------------------------



Sectional Details

Sash Head	65 mm
Sash Stile	55 mm
Sash Btm Rail	110 mm Square
Sash Midrail	36 mm
Sash Thickness	36 mm
Top Sash Horn	Template Attached
Btm Sash Horn	No horn

Location
First Floor Rear ensuite to master

Material Accoya	Quantity 2 Pairs
----------------------------------	-----------------------------------

Glazing Bar	24 mm with 4 mm Nib
Profile	Ovolo
Moulding Cutter	8 x 8 with 3 mm shoulder
Glazing Rebate	15 x 23 mm

- Ironmongery**
- 2 x Fitch Catch SC
 - 2 x Lock Chubb Window Key
 - 8 x Pulley Wheel SS
 - 8 x Rola Lock Back Plate Fastener
 - 4 x Rola Lock SC
 - 4 x Sash Lift SC

Glazing

	Internal Pane	Spacer	External Pane
Top	4mm Planitherm	5mm	4mm Low Iron
Btm	4mm Planitherm Toughened	5mm	4mm Acid Etched

Putty Line Bead White Tape, White Spacer Argon Filled

Paint Finish

Internal	Standard White
External	Standard White

Production Notes

24.1 lb, 25.4 lb, 24.1 lb, 25.4 lb (1 1/4 inch lead)8 | 3 | 23

Installation Notes

Installed: Internally
1. OUT OF SQ HORIZ 10mm.

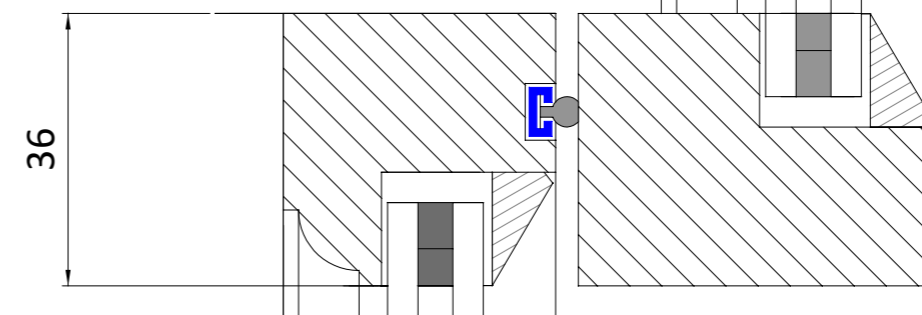
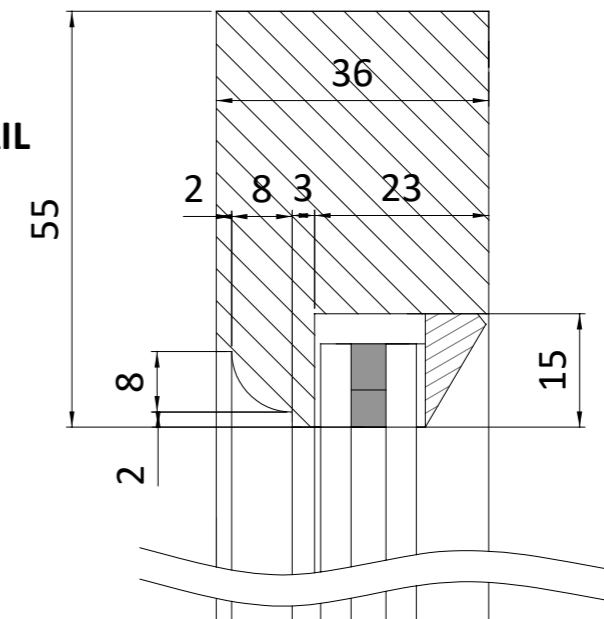
Job Tracking

Order received: 04-04-2017	Print date: 11-04-2017
Sold by: David Farebrother	Last modified by: Chris Jewiss
Surveyed by: Chris Jewiss	Last modified date: 11-04-2017

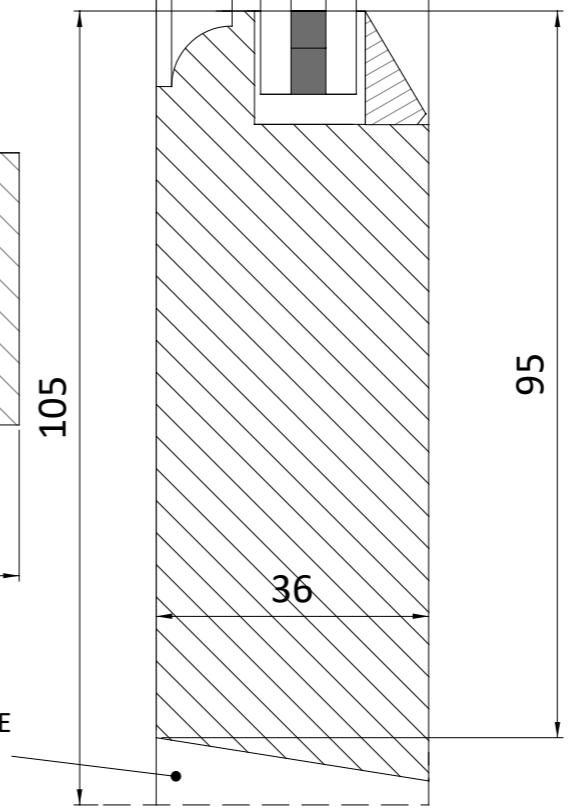
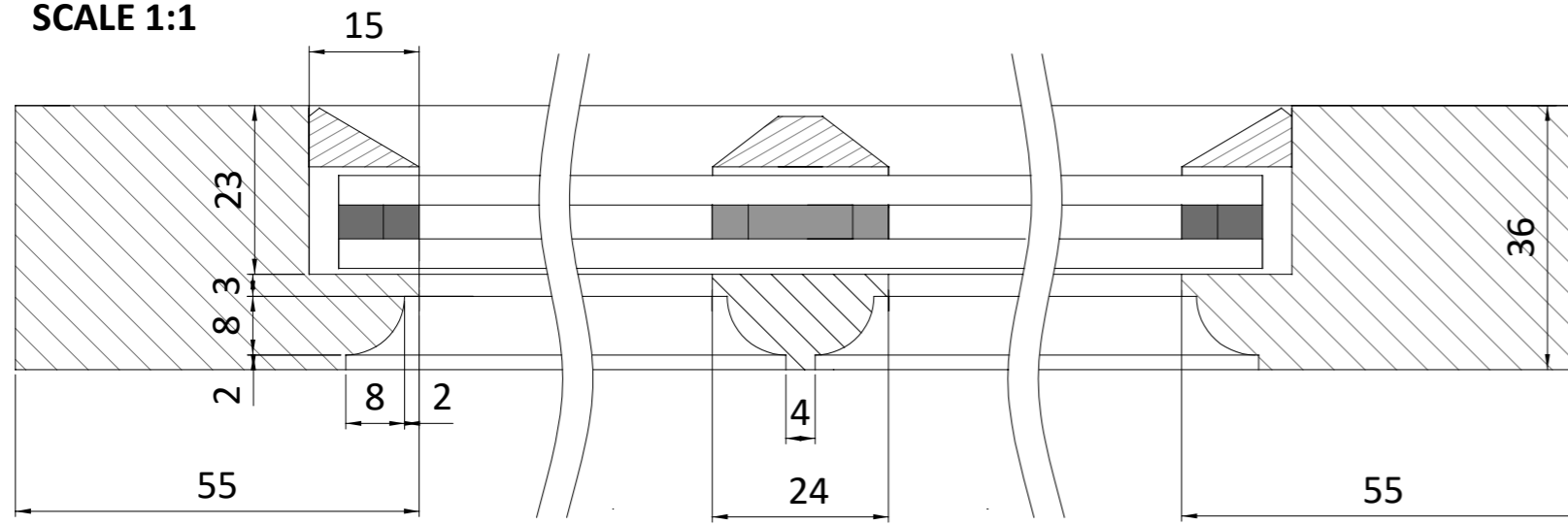
Internal Hazard: **Item Over WC**
Internal Access: **Brace Bar & Harness**

SOME STILES, HEADS AND BOTTOM RAILS WILL BE MANUFACTURED OVER SIZE TO ALLOW FOR TRIMMING FOR OUT OF SQUARE FRAMES. THE DIMENSIONS ON THESE DRAWINGS SHOW THE FINISHED SIZES ONCE FITTED.

**SECTION THROUGH HEAD, MEETING RAIL AND BOTTOM RAIL
SCALE 1:1**



**HORIZONTAL SECTION THROUGH STILE AND GLAZING BAR
SCALE 1:1**



CHAMFERED ON SITE TO SUIT CILL

KRUEGER

Job no 31209

Sheet 2 of 2

Drawn by: C JEWISS
scale: 1:1 at A3
Issue No: 01
Date: APRIL 2017

Material: See Sheet 1

Finish - Int: See Sheet 1
Ext: See Sheet 1

Glass - SEE SHEET 1

Notes:

The Sash Window Workshop
4 Kiln Lane, Bracknell,
Berks RG12 1NA
tel: +44 (0)1344 868668
fax: +44 (0)1344 868858
email: jewiss@sashwindow.com

SECTIONAL DETAILS FOR
NEW SASHES
36mm THICK

ITEMS 2-6