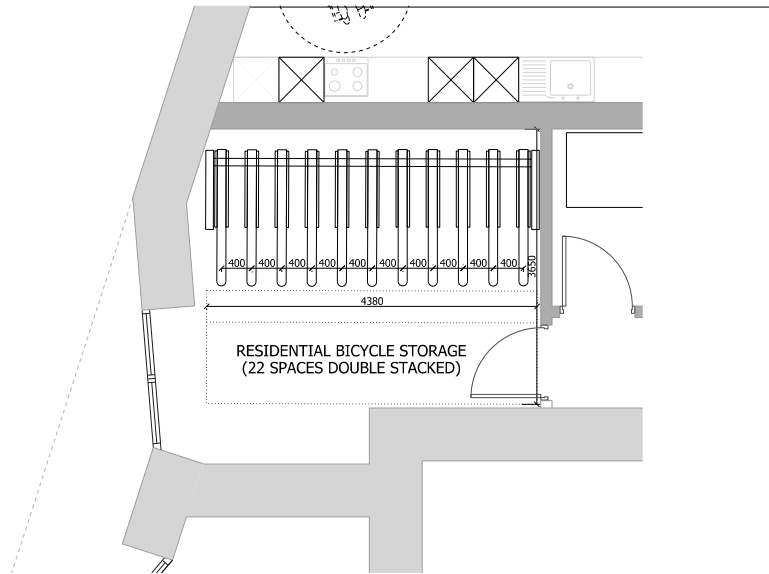
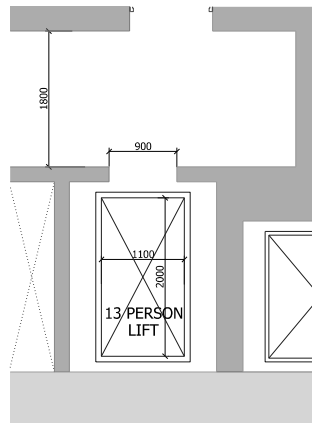


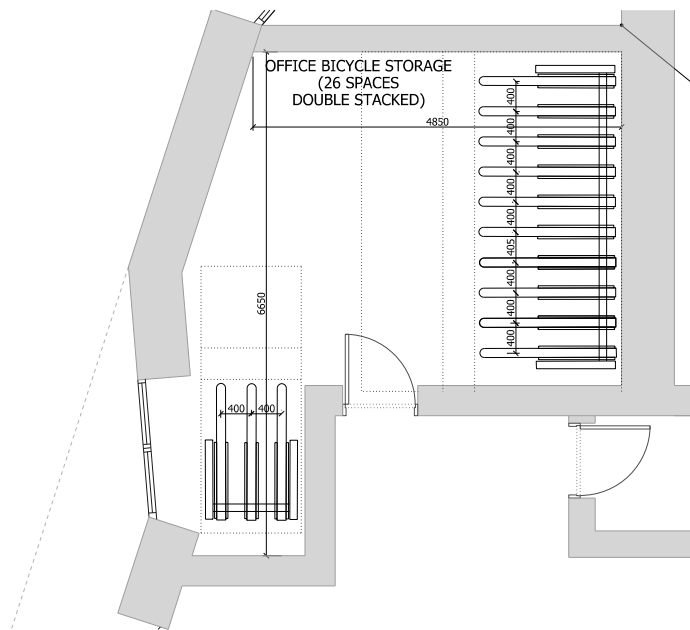
BLOCK 2 RESIDENTIAL BIKE STORE



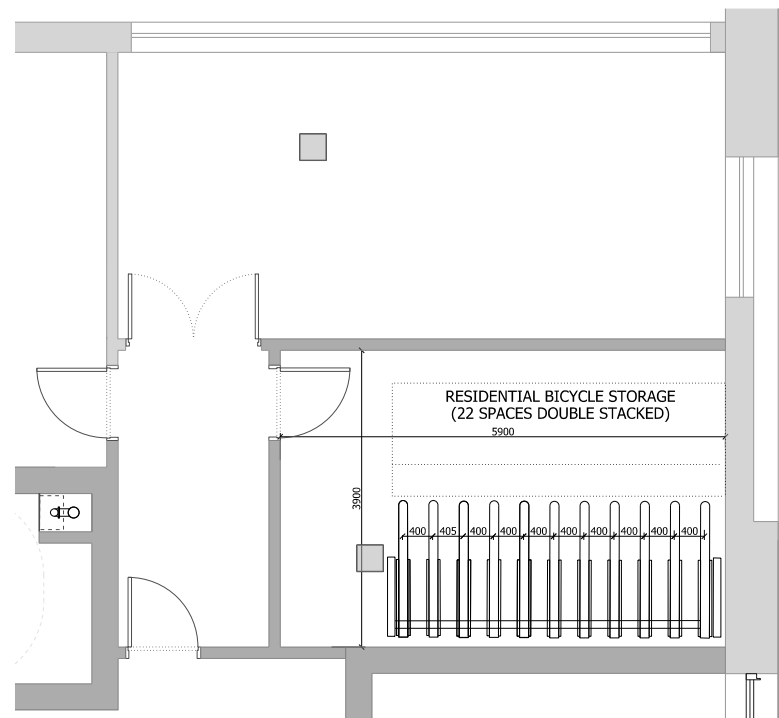
BLOCK 1 RESIDENTIAL BIKE STORE 1 (REAR)



TYPICAL RESIDENTIAL LIFT WITH CORRIDOR DIMENSION



BLOCK 1 OFFICE BIKE STORE



BLOCK 1 RESIDENTIAL BIKE STORE 2 (FRONT)

ALL BIKE STORAGE BASED ON THE  
BDS TWO TIER BIKE RACK OR SIMILAR

NOTES:  
DO NOT SCALE FROM THIS DRAWING.  
ALL DIMENSIONS TO BE CHECKED ON SITE.  
ALL OMISSIONS AND DISCREPANCIES TO BE  
REPORTED TO THE ARCHITECT IMMEDIATELY.

ALL RIGHTS RESERVED. THIS WORK IS COPYRIGHT  
AND CANNOT BE REPRODUCED OR COPIED OR MODIFIED  
IN ANY FORM OR BY ANY MEANS, GRAPHIC ELECTRONIC  
OR MECHANICAL, INCLUDING PHOTOCOPYING WITHOUT  
THE WRITTEN PERMISSION OF SQUIRE AND PARTNERS  
ARCHITECTS.

Revision description	Date	Check	Rev
----------------------	------	-------	-----

## SQUIRE & PARTNERS

77 Wicklow Street London WC1X 9JY  
T: 020 7278 5555 F: 020 7239 0495

info@squireandpartners.com  
www.squireandpartners.com

Project  
19-37 Highgate Road,  
London. NW5

Drawing  
Cycle Store Layouts

Drawn	Date	Scale
BJ	28/04/2017	1:150 @ A1 1:150 @ A3
Job number	Drawing number	Revision
13052	C645_D_01_001	-