

Newsletter

March 2017

Welcome to our 2nd Edition newsletter for the works to Netley Primary School on behalf of Camden Council.

Secondary Introduction

Following our previous newsletter, we introduced ourselves as Kind Diamond Build Consortium Ltd. whom have been appointed by Camden Council to carry out following works to Netley Primary School: -

- A new 2 year olds & Nursery facility,
- A new toilet block,
- Refurbishment works to the roof to accommodate space suitable for the Science, Technology, Engineering and Mathematics (STEM) department to teach in.

Everton Mews

We would like to thank everyone at Everton Mews for their patience thought the working hours of the days while operatives and visitors gain access to site via the side road, and continuous support while major works are on-going.

Netley Street

We would like to also thank everyone at Netley Street for bearing with our deliveries. We hope none have been of any inconvenience to your day.

We would also like to thank the residents of Netley Street for their patience while the scaffolding has been erected. We hope this has not been too much an eye sore! Residence will be pleased to know we anticipate dismantling the scaffolding during the Easter holidays.

Kind Diamond Build Consortium Ltd is an active member of the Considerate Constructors Scheme and full details of the Scheme are posted near to our site entrance for your information.

As you will have noticed, the external protection of our works to Netley Primary School is comprehensive, and we have taken all steps possible to ensure that the protection of the public is maintained at all times.

Progress Since Last Newsletter

We're please to say the project has significantly progressed since our last newsletter. The construction of the toilet block has since been complete; the 2yo block is now out of the ground, and the Science, Technology, Engineering and Mathematics (STEM) is fast approaching completion.

Photos have been attached on subsequent pages for your interest.

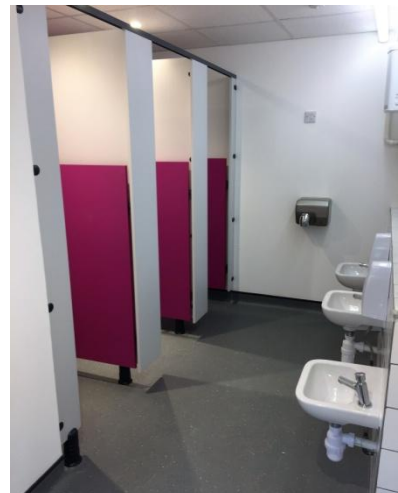
Toilet Block



Boys WC

Disabled WC

Girls WC

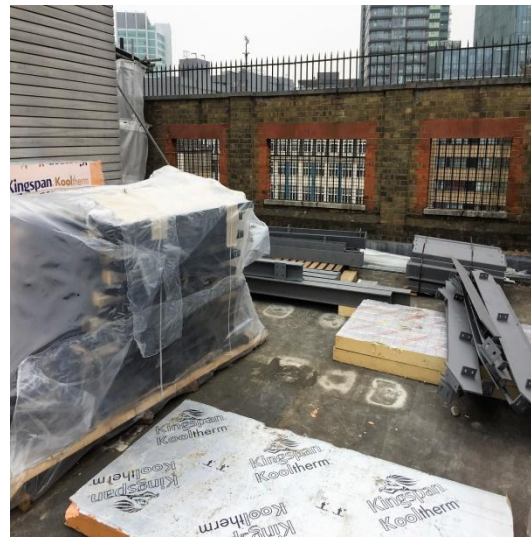
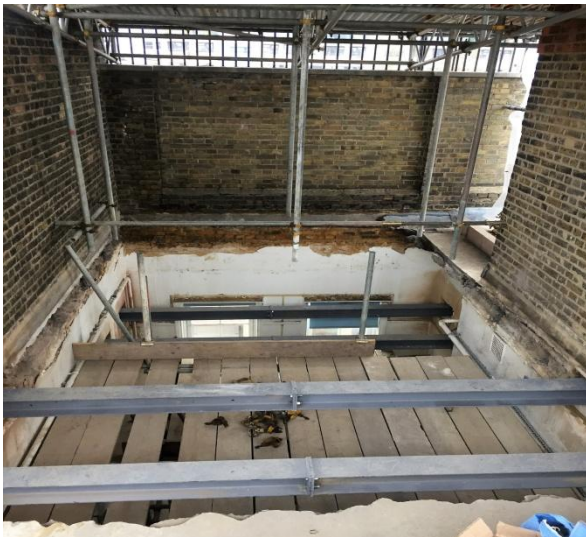


STEM

Skylights & roofing works complete. Acoustic Rigitone ceiling nearing completion. Existing iron scroll retained within STEM.



Opening for STEM staircase. Door and staircase ready for install



2 Year Old & Nursery Facility

External brick work complete and ready for mirrored tiles.



Roof pictured below awaits the installation of the sedum roof system (green roof) in due course.





Kind Diamond Build Consortium Limited
52-68 Stamford Road
South Tottenham
London N15 4PZ

Email: info@kdc.london.com
www.kdc.london

We would like to encourage further communication between ourselves and neighbours, and welcome all feedback.

For any queries, concerns or additional information, please contact our site team Geoff Williams and Ben Hoskins at the contact detail below.

Geoff Williams

Tel: 07980 730316

Email: geoff.williams@kdc.london

Ben Hoskins

Tel: 07412 609043

Email: ben.hoskins@kdc.london

We would again like to thank all for your continued patients and support while the works are on-going and will issue another newsletter in due course.

Thanks

KDC Team