

Gundry

+

Ducker

08.05.17

Jacob the Angel- 16A Neal's Yard  
Heritage, Design and Access Statement

## 16A Neal's Yard, WC2H 9DP



Site Location Plan- 16A Neal's Yard

## Introduction.

This statement is to propose amendments to the shopfront to the ground floor of number 16A Neal's Yard. The statement gives a detailed description of the heritage, proposed works and provides a statement on access.

### 1.0 Site Context

- 1.0 Existing shopfront
- 1.1 Existing site context
- 1.2 Historic Context and Heritage Statement

### 2.0 The Proposal

- 2.0 Proposed works & Design Statement
- 2.1 Access Statement

## 1.0 Existing external photographs



Image A- Existing Shopfront at 16A Neal's Yard.

## Existing

This existing shop front comprises a modern painted timber and glass shopfront which does not possess any value to the building or site locations historic fabric.

As can be seen in image below the traditional type shopfront replaced a glazed screen that was installed when Neal's Yard was first developed. The current shopfront in image A is overtly the only "traditional" type shopfront in the yard.





## 1.1 Existing Site Context



Image B- Existing site context Neal's Yard.



Image C- Hairy by Fairy, Neal's Yard.



Image D- 26 grains, Neal's Yard.



Image E- Existing site context Neal's Yard.

Many of the existing shopfronts reference the early characteristics of Neal's Yard with fully opening shopfronts, creating a connection with the yard and referencing the industrial character of the yard.

## 1.2 Historic Context and Heritage Statement



Image F- Derelict Neal's Yard

<https://nealsyard.files.wordpress.com/2016/10/neals-yard-booklet-mk-4.pdf>



As can be seen, all openings were opening glazed screens behind full height timber doors.



## 1.2 Historic Context and Heritage Statement



Image H- Neal's Yard Circa. 1970



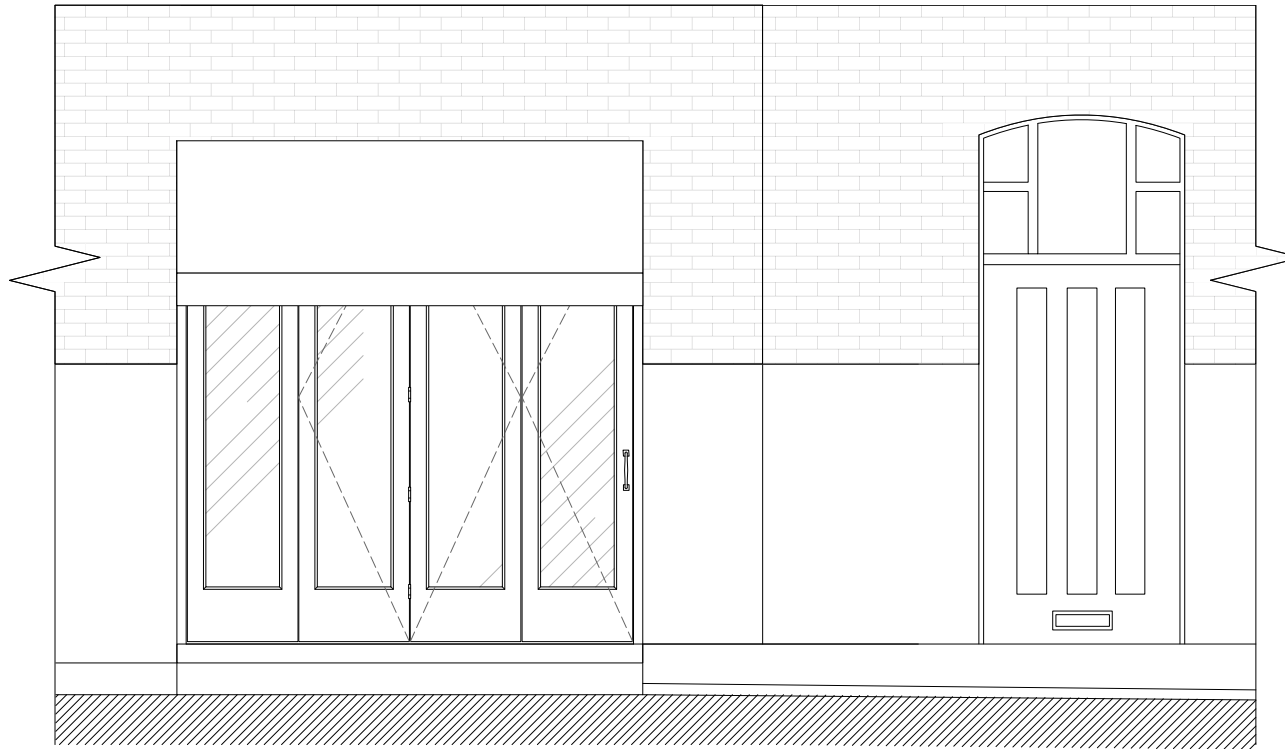
Image I- Neal's Yard Circa. 1980

Historically Neal's Yard comprised a series of derelict warehouses with gated openings directly onto the yard, which can be seen in the image F. The gated facades of the warehouses were replaced with new opening shopfronts seen in images H & I, which allowed the businesses to retain the connection with the yard. Some of the businesses operated by having counters to the front of the shop as can be seen in the image circa 1980, thus allowing the yard and shop spaces operate as a single space with no definitive threshold.

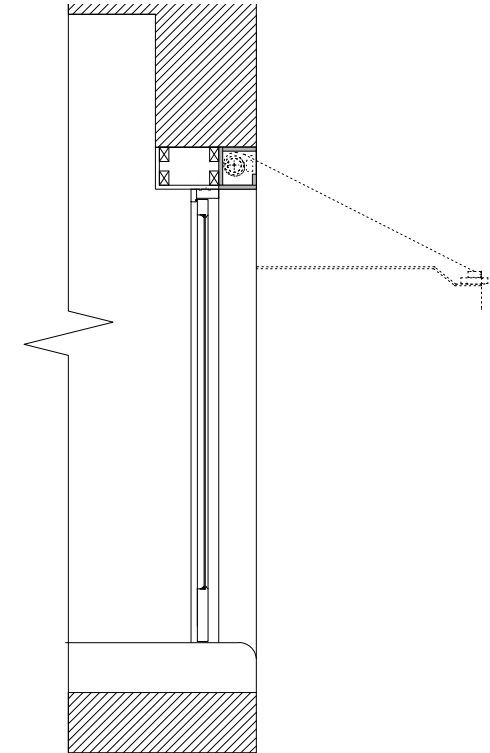
Traditional type shopfronts are therefore not a appropriate type for the industrial character of Neal's Yard.

The proposal to insert an opening shofront does not adversely impact on the original historic fabric of the building.

## 2.0 Proposed Works &amp; Design Statement



Proposed Shop Front Elevation



Proposed Shop Front Section

The proposal is to insert a new shopfront into the existing opening. Openable full height painted timber doors to span the width of the existing opening. The proposal also includes a new blind box, fabric blind and valance to the shopfront fascia.

## 2.2 Access Statement



The existing shop floor level is to be retained and cannot be altered. The level is approximately 260mm above the existing exterior ground level consisting of bullnosed engineering bricks.



Gundry

+

Ducker

Gundry & Ducker Architecture Ltd.  
3 Garrick Street  
London WC2E 9BF  
United Kingdom

+44(0)20 3417 4895  
info@gundryducker.com

RIBA   

---

Chartered Practice