

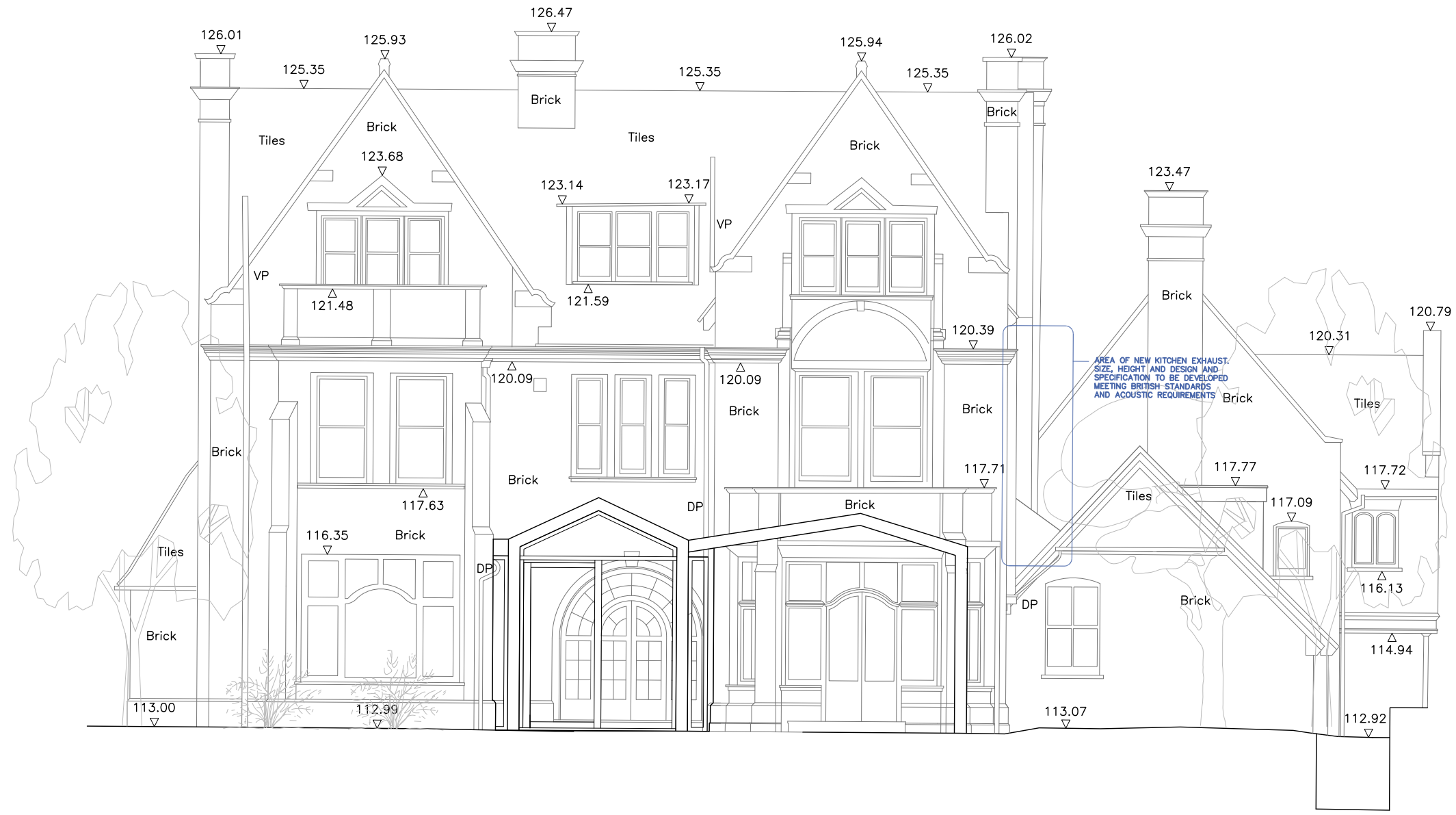
Notes

All dimensions to be verified on site. Do not scale this drawing. All discrepancies to be clarified with project Architect.

This drawing is the property of Benoy Architects and is issued on the condition it is not reproduced, retained or disclosed to any unauthorised person, either wholly or in part without written consent of Benoy Ltd.

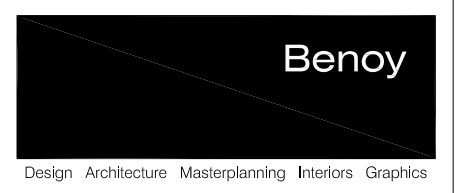
Ordnance Survey material is used with the permission of The Controller of HMSO. Crown copyright AR 159670.

The CDM hazard management procedures for the Benoy aspects of the design of this project are to be found on the "Benoy - Designer's Hazard Identification and Management Sheet" and/or drawings. The full project design team's comprehensive set of hazard management procedures are available from the Planning Supervisor/Safety Coordinator appointed for the project.



B00 13/04/17 Issued for Planning OG RP

Rev	Date	Description	By	Chkd



Client
**EMBASSY OF THE PEOPLE'S
 REPUBLIC OF CHINA**

Project
**CHINESE EMBASSY
 CULTURAL OFFICE
 REFURBISHMENT / EXTENSION**

Drawing Title
**PROPOSED ELEVATION
 MAIN BUILDING - SOUTH**

Drawn By OG	Checked By RP
----------------	------------------

Scale 1:100@A3	Date MARCH 2017
-------------------	--------------------

Project No. 5927	Drawing No. BNY-MA-08-S001	Revision B00
---------------------	-------------------------------	-----------------

Status
PLANNING

t +44 (0) 207 404 7666 f +44 (0) 207 404 7980 a london@benoy.com	www.benoy.com
--	---------------