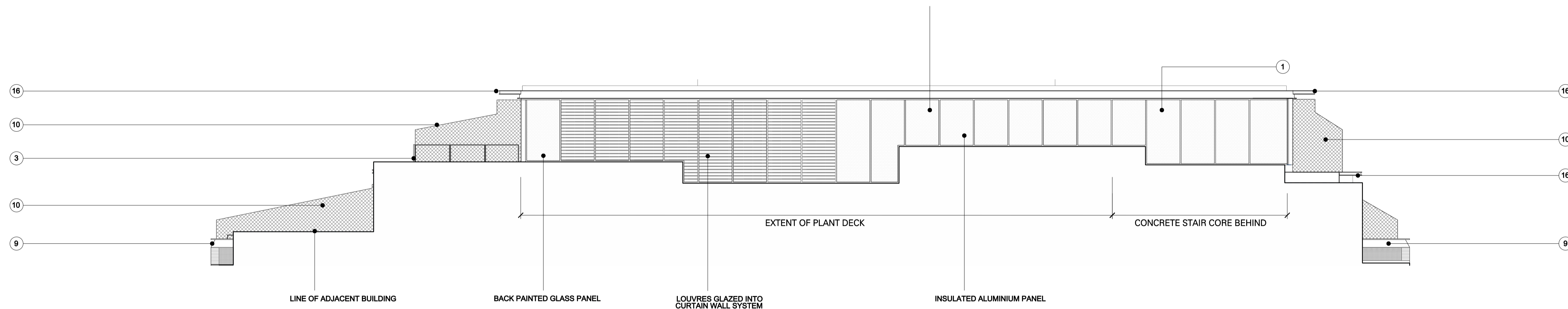


1. Fixed glazing panes
2. Double glazing sliding door system
3. Dark slender Powder coated metal balustrade
4. Fixed double glazed window
5. Red Brick cladding
6. Concrete spandrel panel
7. Mesh within a double glazed unit
8. Double glazed entrance door
9. Black painted 'Z' channel forms coping
10. Privacy screens with planting
11. Projecting sign
12. Mesh doors to substation and vent
13. Mesh within double glazed door
14. Rotating entrance door
15. Projecting canopy
16. Dark powder coated briese soleil
17. Photovoltaic Panels

THE SAME CURTAIN WALL SYSTEM WRAPS AROUND WHOLE 5TH FLOOR
 AT PLANT DECK THE GLASS PANELS ARE REPLACED WITH LOUVRES OR WITH OBSCURED PANELS.
 OBSCURED PANELS ARE BACK PAINTED GLASS WHEN VISIBLE AND INSULATED ALUMINIUM WHEN
 BORDERING THE NEIGHBOURS ROOF TOP PLANT IN ORDER TO PREVENT ANY CHANCE OF BREAKAGES



01. PROPOSED WEST ELEVATION



REV.	DATE	DESCRIPTION	REV.	DATE	DESCRIPTION
-	22.03.17	ISSUED FOR PLANNING			

NOTES:
 1. ALL DIMENSIONS IN MM
 2. THIS DRAWING TO BE READ IN CONJUNCTION WITH ALL RELEVANT CONTRACT DOCUMENTS
 3. THIS DRAWING TO BE READ IN CONJUNCTION WITH ALL ENGINEERS' DRAWINGS
 4. DO NOT SCALE FROM THIS DRAWING
 5. REPORT ANY ERRORS, CONTRADICTIONS, AND OMISSIONS TO THE ARCHITECT AS SOON AS POSSIBLE

KEY:

BenAdamsArchitects
 Third floor
 99 Southwark Street
 London SE1 0JF
 T 020 7533 0000
 benadamsarchitects.co.uk
 info@benadamsarchitects.co.uk

JOB NO: A12-007
SCALE: 1:200 @ A3 1:100 @ A1
STATUS: INFORMATION

DRAWING NAME: PROPOSED WEST ELEVATION
PROJECT NAME: JAMESTOWN ROAD
DRAWING NO: **P403/-**