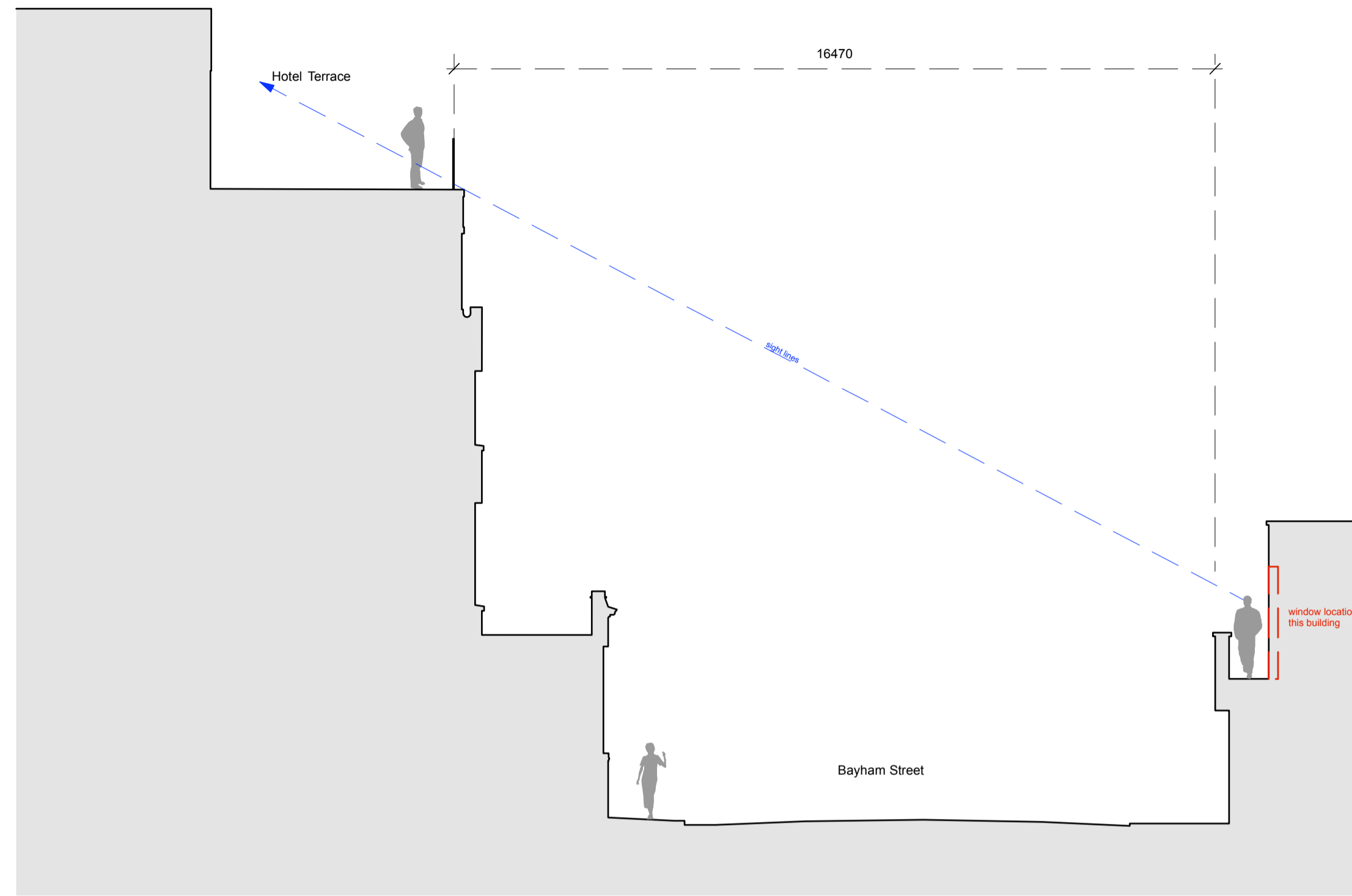
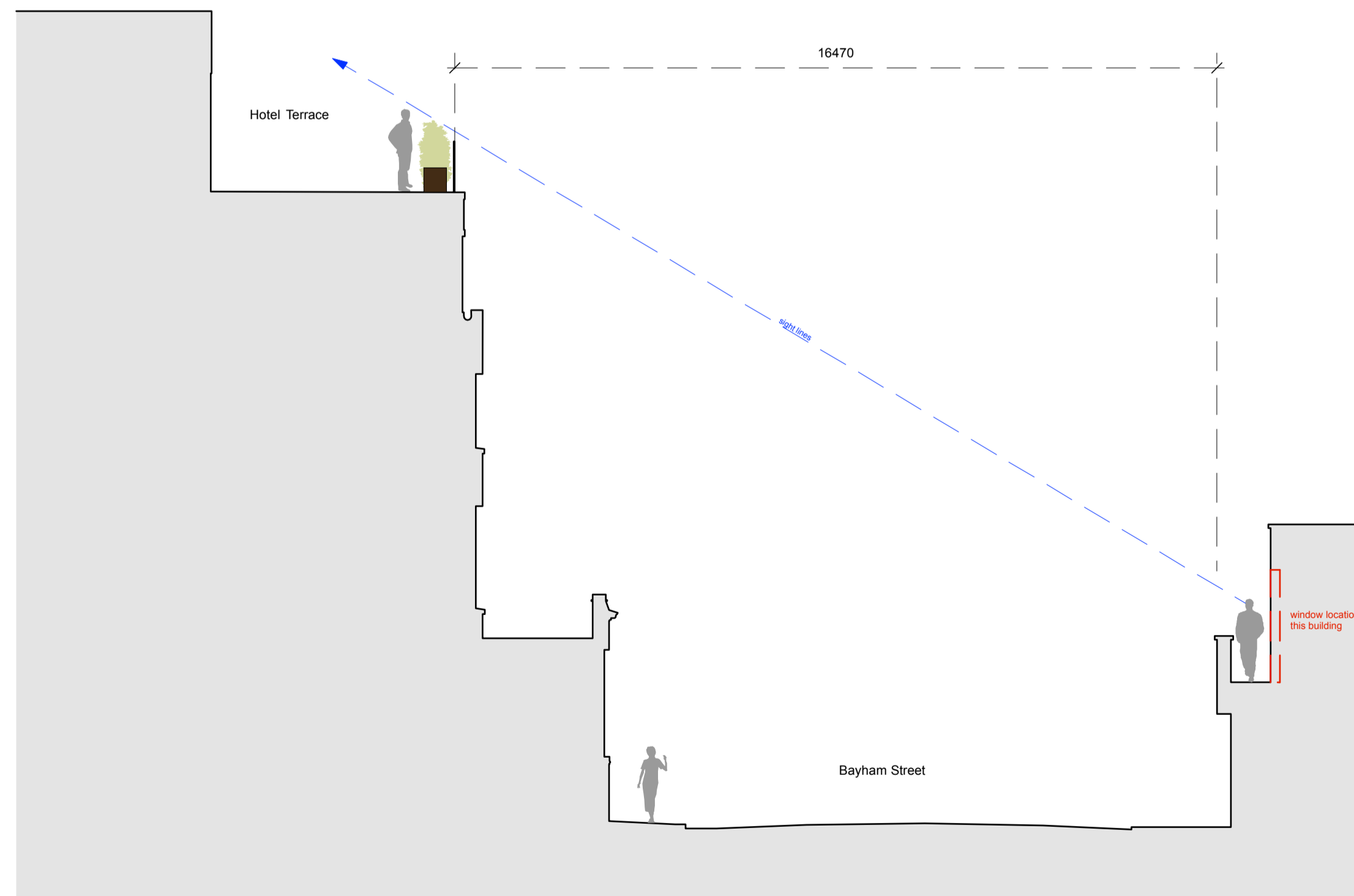


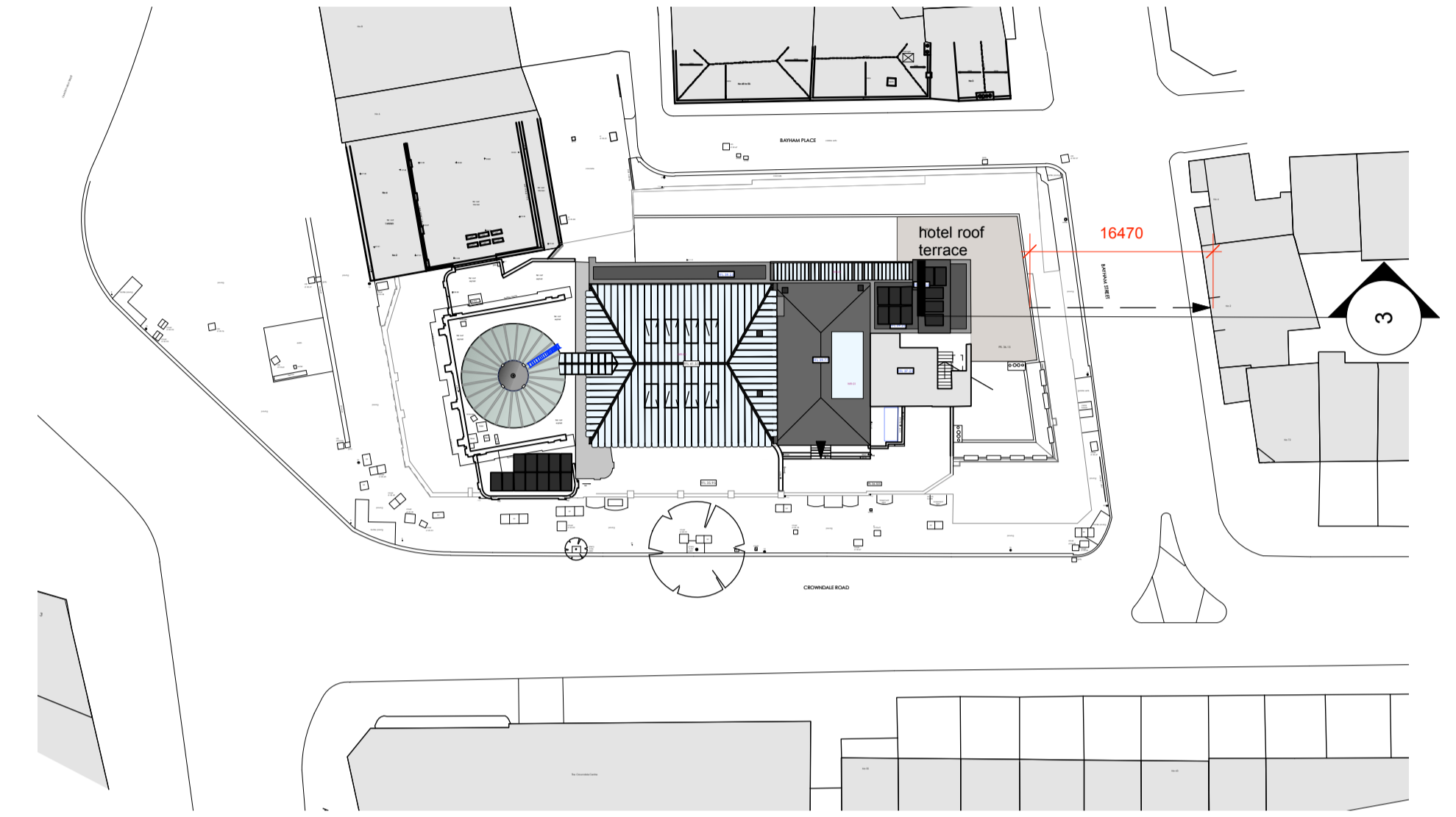
revision / date / amendments



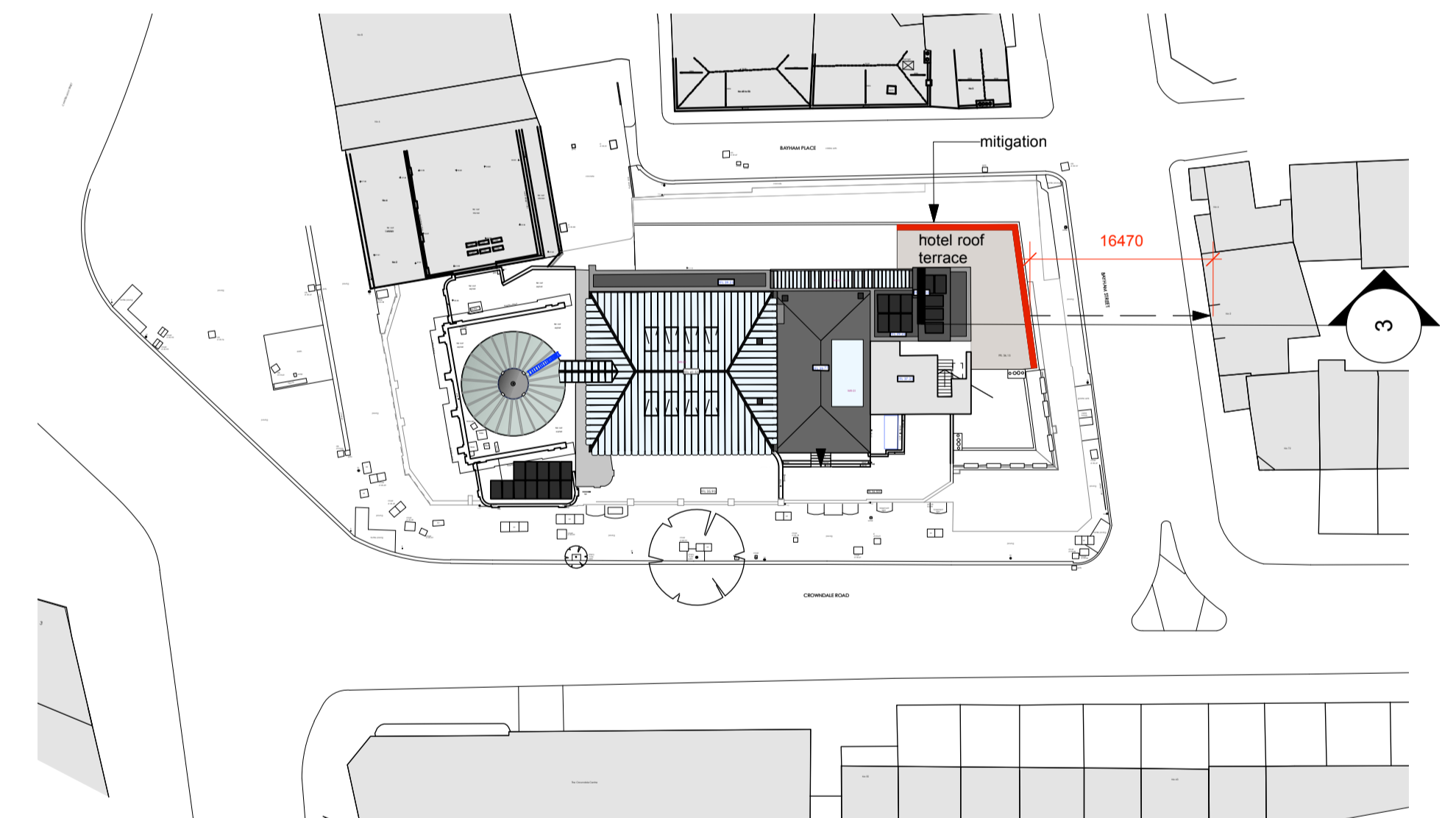
3 Section through Bayham Street without mitigation  
 Scale: 1:100



3a Scale: 1:100  
 Section through Bayham Street with mitigation



Proposed Roof Plan  
 Scale: 1:500



Proposed Roof Plan with mitigation  
 Scale: 1:500



For Information

Archer Humphryes Architects

Basement  
 Central House  
 142 Central Street  
 London, United Kingdom  
 EC1V 5AR  
 T: +44 (0) 20 7251 8555

project title  
 KOKO + Hope & Anchor + Bayham Place  
 Camden, London

drawing title	scale	date
Sections through roof terraces 3	1:100 B.A.1	07.04.17
drawing number	drawn	checked
AHA/KKC/PR/307-3	EH	DA
	revision	
	A	