

SAFETY HEALTH AND ENVIRONMENTAL INFORMATION

IN ADDITION TO THE HAZARDS/RISKS NORMALLY ASSOCIATED WITH THE TYPES OF WORK DETAILED ON THIS DRAWING, NOTE THE FOLLOWING:

- CONSTRUCTION**
1. WORKING AT HEIGHT
 2. LIFTING HEAVY EQUIPMENT
 3. WORKING ADJACENT TO POTENTIALLY LIVE SERVICES
 4. HANDLING CHEMICAL PRODUCTS
 5. WORKING IN CONFINED SPACES
 6. PRESENCE OF ASBESTOS

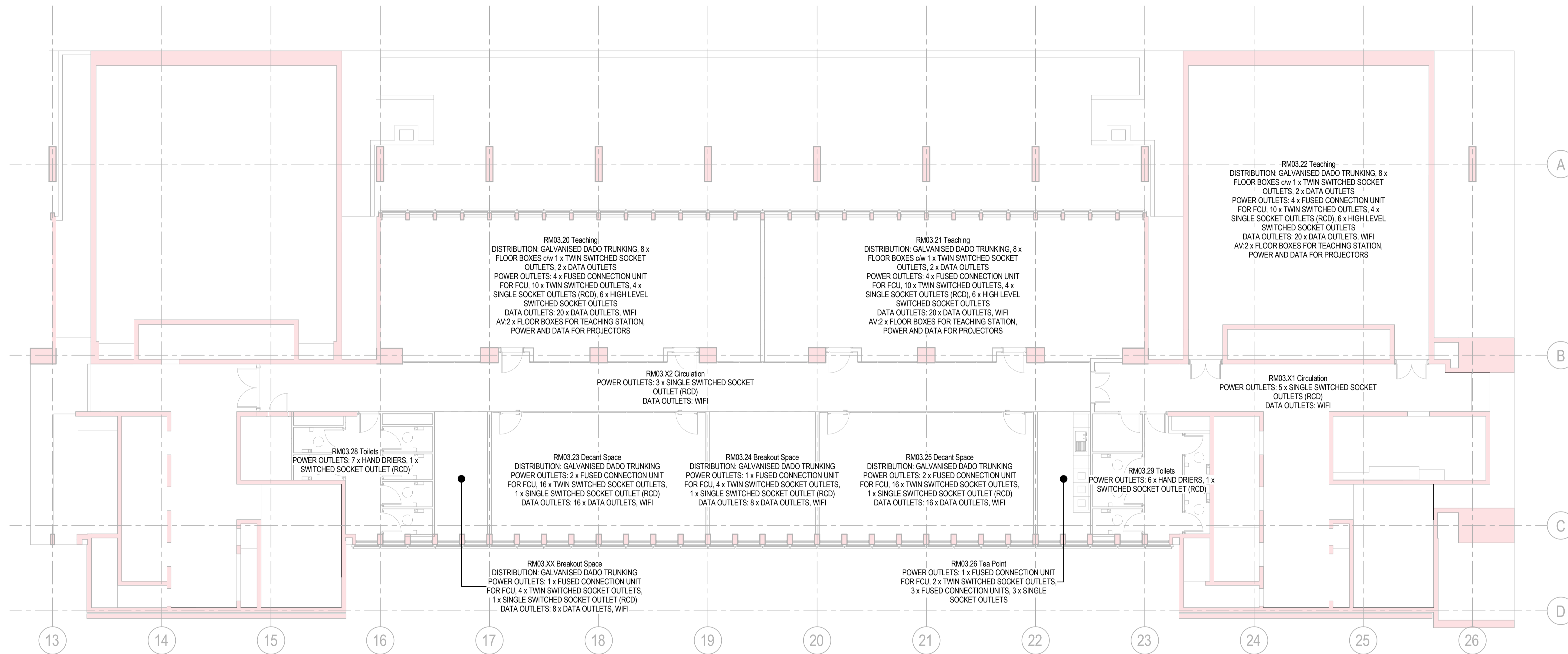
- MAINTENANCE/LEANING/OPERATION**
1. HANDLING CHEMICAL PRODUCTS
 2. WORKING AT HEIGHT
 3. WORKING ADJACENT TO POTENTIALLY LIVE SERVICES

- DECOMMISSIONING/DEMOLITION**
1. PRESENCE OF LIVE SERVICES
 2. PRESENCE OF ASBESTOS
 3. WORKING AT HEIGHT
 4. LIFTING HEAVY EQUIPMENT
 5. PRESENCE OF FLOOR OPENINGS
 6. ALWAYS SAFELY ISOLATE BEFORE COMMENCING ANY WORKS

Notes

SMALL POWER NOTES

1. THIS DRAWING IS TO BE READ IN CONJUNCTION WITH ALL OTHER DISCIPLINES, DRAWINGS, SCHEDULES AND SPECIFICATIONS, LEGENDS AND STANDARD DETAILS.
2. THIS DRAWING IS COPYRIGHT AND SHALL NOT BE REPRODUCED WITHOUT PERMISSION.
3. DIMENSIONS GOVERN ON ALL DRAWINGS AND DETAILS. SHOULD ANY DISCREPANCIES BE FOUND WITH THIS DRAWING AND ANY ASSOCIATED DRAWINGS OR SPECIFICATIONS THIS SHOULD BE BROUGHT TO THE ATTENTION OF THE M&E BUILDING SERVICES CONSULTANT IMMEDIATELY.
4. UNLESS OTHERWISE STATED ALL DIMENSIONS ARE IN MILLIMETRES.
5. DO NOT SCALE FROM THIS DRAWING.
6. DIMENSIONS TO BE CHECKED ON SITE BEFORE ANY WORK IS PUT IN HAND OR PREFABRICATED.
7. THIS DRAWING SHOULD ONLY BE USED FOR THE SPECIFIC SERVICES INTENDED.
8. THIS DRAWING SHOWS THE DESIGN INTENT ONLY. THE CONTRACTOR SHALL BE RESPONSIBLE FOR THE FULL CO-ORDINATION OF THE SERVICES INDICATED ON THIS AND ALL OTHER SERVICES DRAWINGS.
9. FINAL ACCESS AND SETTING OUT OF SERVICES SHALL BE AGREED BETWEEN THE ARCHITECT AND THE CONTRACTOR.
10. THE PROJECT NOTES ARE TO BE READ IN CONJUNCTION WITH ALL RELEVANT TECHNICAL SPECIFICATIONS.
11. WHERE ELECTRICAL SERVICES PASS THROUGH FIRE COMPARTMENTATION CEILING VOIDS, FLOOR VOIDS AND STRUCTURAL WALLS THE CONTRACTOR SHALL SLEEVE/SEAL THE OPENING WITH AN ACOUSTIC AND FIRE SEALANT APPROVED BY THE ARCHITECT.
12. THE CONTRACTOR SHALL REFER TO THE ARCHITECT'S DRAWINGS FOR DETAILS OF FIRE COMPARTMENTATION.
13. THE CONTRACTOR SHALL REFER TO THE ARCHITECT'S REFLECTED CEILING PLANS AND ROOM ELEVATIONS FOR THE EXACT LOCATION OF ALL SERVICES.
14. DRAWING HAS BEEN PRODUCED FROM INCOMPLETE RECORD INFORMATION AND VISUAL SITE SURVEYS. CONTRACTOR IS RESPONSIBLE FOR VALIDATING ACCURACY PRIOR TO WORKS.
15. CONTRACTOR TO PROVIDE SCHEDULE OF PROPOSED SERVICES ISOLATIONS PRIOR TO WORK COMMENCING.
16. DRAWINGS ARE INDICATIVE ONLY AND ARE SHOWN FOR THE DESIGN INTENT AND THE DESIGN & BUILD CONTRACTOR'S PRICING PURPOSE. THE CONTRACTOR SHALL VERIFY ALL ASPECTS OF THE DESIGN DURING HIS DESIGN PHASE.



Rev	Description	Date	Appr
P01	TENDER	11/04/2017	LH

TENDER

Status/Suitability of Drawing

**BUROHAPPOLD
ENGINEERING**

17 Newman Street
 London
 W1T 1PD
 UK

Tel: +44 (0)2079 279 700
 Fax: +44 (0)207 874 145
 Email: 035833@burohappold.com
 Web: www.burohappold.com

Architect: **HawkinsBrown**
 Project: **UCL Institute of Education**
 Dwg Title: **Electrical Services
 Small Power & Data Layout
 Level 3 ISD**

Job No: **035833**
 Scale: **1 : 100**

Drawing No: **20BW-BHE-S2-03-DR-E-XX-1000**

Revision: **P01**

1 Electrical Services Small Power & Data Layout - Level 3 ISD

DO NOT SCALE THIS DRAWING.

SAFETY HEALTH AND ENVIRONMENTAL INFORMATION

IN ADDITION TO THE HAZARDS/RISKS NORMALLY ASSOCIATED WITH THE TYPES OF WORK DETAILED ON THIS DRAWING, NOTE THE FOLLOWING:

- CONSTRUCTION**
1. WORKING AT HEIGHT
 2. LIFTING HEAVY EQUIPMENT
 3. WORKING ADJACENT TO POTENTIALLY LIVE SERVICES
 4. HANDLING CHEMICAL PRODUCTS
 5. WORKING IN CONFINED SPACES
 6. PRESENCE OF ASBESTOS

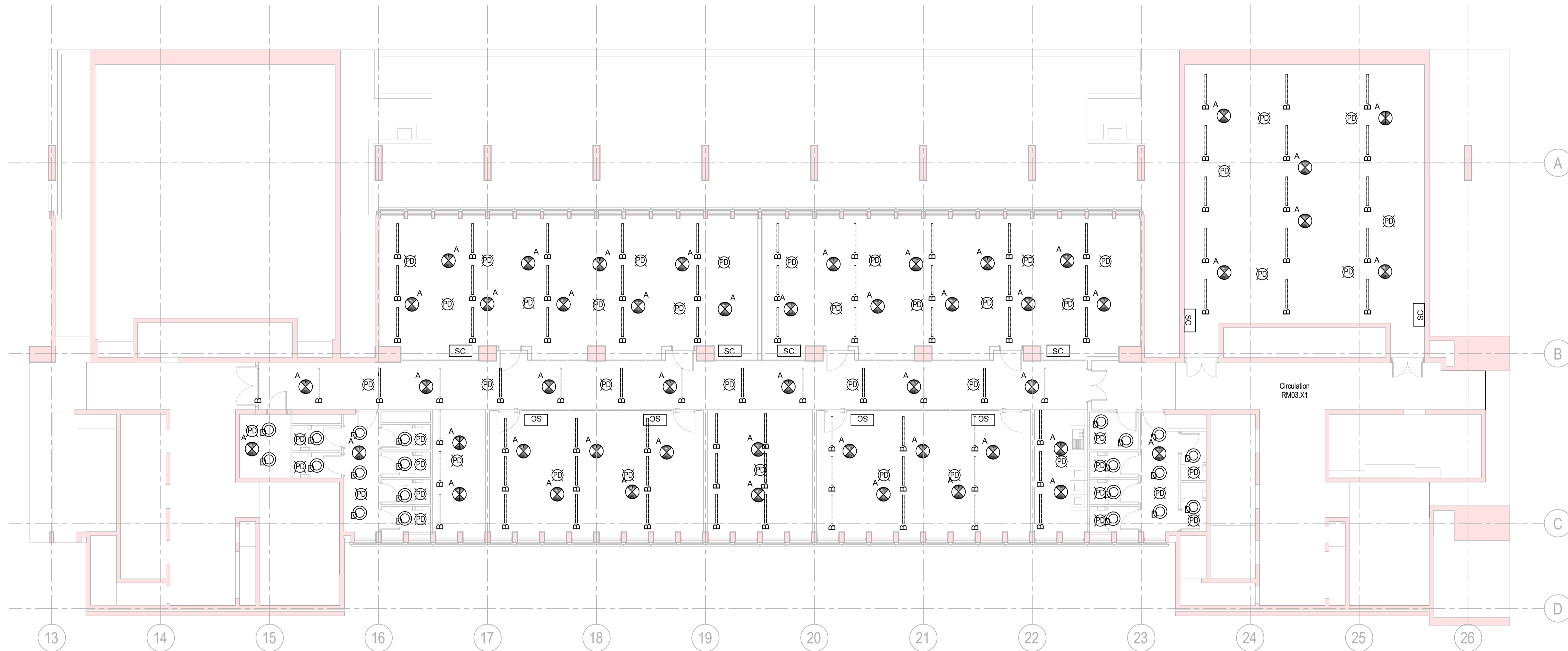
- MAINTENANCE/CLEANING/OPERATION**
1. HANDLING CHEMICAL PRODUCTS
 2. WORKING AT HEIGHT
 3. WORKING ADJACENT TO POTENTIALLY LIVE SERVICES

- DECOMMISSIONING/DEMOLITION**
1. PRESENCE OF LIVE SERVICES
 2. PRESENCE OF ASBESTOS
 3. WORKING AT HEIGHT
 4. LIFTING HEAVY EQUIPMENT
 5. PRESENCE OF FLOOR OPENINGS
 6. ALWAYS SAFELY ISOLATE BEFORE COMMENCING ANY WORKS

Notes

LIGHTING NOTES

1. THIS DRAWING IS TO BE READ IN CONJUNCTION WITH ALL OTHER DISCIPLINES, DRAWINGS, SCHEDULES AND SPECIFICATIONS, LEGENDS AND STANDARD DETAILS.
2. THIS DRAWING IS COPYRIGHT AND SHALL NOT BE REPRODUCED WITHOUT PERMISSION.
3. DIMENSIONS GOVERN ON ALL DRAWINGS AND DETAILS. SHOULD ANY DISCREPANCIES BE FOUND WITH THIS DRAWING AND ANY ASSOCIATED DRAWINGS OR SPECIFICATIONS THIS SHOULD BE BROUGHT TO THE ATTENTION OF THE M&E BUILDING SERVICES CONSULTANT IMMEDIATELY.
4. UNLESS OTHERWISE STATED ALL DIMENSIONS ARE IN MILLIMETRES.
5. DO NOT SCALE FROM THIS DRAWING.
6. DIMENSIONS TO BE CHECKED ON SITE BEFORE ANY WORK IS PUT IN HAND OR PREFABRICATED.
7. THIS DRAWING SHOULD ONLY BE USED FOR THE SPECIFIC SERVICES INTENDED.
8. THIS DRAWING SHOWS THE DESIGN INTENT ONLY. THE CONTRACTOR SHALL BE RESPONSIBLE FOR THE FULL CO-ORDINATION OF THE SERVICES INDICATED ON THIS AND ALL OTHER SERVICES DRAWINGS.
9. FINAL ACCESS AND SETTING OUT OF SERVICES SHALL BE AGREED BETWEEN THE ARCHITECT AND THE CONTRACTOR.
10. THE PROJECT NOTES ARE TO BE READ IN CONJUNCTION WITH ALL RELEVANT TECHNICAL SPECIFICATIONS.
11. WHERE ELECTRICAL SERVICES PASS THROUGH FIRE COMPARTMENTATION CEILING VOIDS, FLOOR VOIDS AND STRUCTURAL WALLS THE CONTRACTOR SHALL SLEEVE/SEAL THE OPENING WITH AN ACOUSTIC AND FIRE SEALANT APPROVED BY THE ARCHITECT.
12. THE CONTRACTOR SHALL REFER TO THE ARCHITECT'S DRAWINGS FOR DETAILS OF FIRE COMPARTMENTATION.
13. FOR THE SPECIFICATION OF ALL LUMINAIRES PLEASE REFER TO THE LUMINAIRE SCHEDULE.
14. THE CONTRACTOR SHALL REFER TO THE ARCHITECT'S REFLECTED CEILING PLANS AND ROOM ELEVATIONS FOR THE EXACT LOCATION OF ALL SERVICES.
15. DRAWING HAS BEEN PRODUCED FROM INCOMPLETE RECORD INFORMATION AND VISUAL SITE SURVEYS. CONTRACTOR IS RESPONSIBLE FOR VALIDATING ACCURACY PRIOR TO WORKS.
16. CONTRACTOR TO PROVIDE SCHEDULE OF PROPOSED SERVICES ISOLATIONS PRIOR TO WORK COMMENCING.
17. DRAWINGS ARE INDICATIVE ONLY AND ARE SHOWN FOR THE DESIGN INTENT AND THE DESIGN & BUILD CONTRACTOR'S PRICING PURPOSE. THE CONTRACTOR SHALL VERIFY ALL ASPECTS OF THE DESIGN DURING HIS DESIGN PHASE.



1 Electrical Services Lighting Layout - Level 3 ISD

P01	TENDER	11/04/2017	LH
Rev	Description	Date	Approved

TENDER

Status/Stability of Drawing

**BUROHAPPOLD
ENGINEERING**

17 Newman Street
 London
 W1T 1PD
 UK

Tel: +44 (0)2079 279 700
 Fax: +44 (0)207 874 145
 Email: 035833@burohappold.com
 Web: www.burohappold.com

Architect: *HawkinsBrown*
 Project: **UCL Institute of Education**
 Dwg Title: **Electrical Services
 Lighting Layout
 Level 3 ISD**

Job No: **035833**
 Scale@A1: **1 : 100**

Drawing No: **20BW-BHE-S2-03-DR-E-XX-2000**

Revision: **P01**

SAFETY HEALTH AND ENVIRONMENTAL INFORMATION

IN ADDITION TO THE HAZARDS/RISKS NORMALLY ASSOCIATED WITH THE TYPES OF WORK DETAILED ON THIS DRAWING, NOTE THE FOLLOWING:

- CONSTRUCTION**
1. WORKING AT HEIGHT
 2. LIFTING HEAVY EQUIPMENT
 3. WORKING ADJACENT TO POTENTIALLY LIVE SERVICES
 4. HANDLING CHEMICAL PRODUCTS
 5. WORKING IN CONFINED SPACES
 6. PRESENCE OF ASBESTOS

- MAINTENANCE/CLEANING/OPERATION**
1. HANDLING CHEMICAL PRODUCTS
 2. WORKING AT HEIGHT
 3. WORKING ADJACENT TO POTENTIALLY LIVE SERVICES

- DECOMMISSIONING/DEMOLITION**
1. PRESENCE OF LIVE SERVICES
 2. PRESENCE OF ASBESTOS
 3. WORKING AT HEIGHT
 4. LIFTING HEAVY EQUIPMENT
 5. PRESENCE OF FLOOR OPENINGS
 6. ALWAYS SAFELY ISOLATE BEFORE COMMENCING ANY WORKS

Notes

FIRE ALARM NOTES

1. THIS DRAWING IS TO BE READ IN CONJUNCTION WITH ALL OTHER DISCIPLINES, DRAWINGS, SCHEDULES AND SPECIFICATIONS, LEGENDS AND STANDARD DETAILS.
2. THIS DRAWING IS COPYRIGHT AND SHALL NOT BE REPRODUCED WITHOUT PERMISSION.
3. DIMENSIONS GOVERN ON ALL DRAWINGS AND DETAILS. SHOULD ANY DISCREPANCIES BE FOUND WITH THIS DRAWING AND ANY ASSOCIATED DRAWINGS OR SPECIFICATIONS THIS SHOULD BE BROUGHT TO THE ATTENTION OF THE M&E BUILDING SERVICES CONSULTANT IMMEDIATELY.
4. UNLESS OTHERWISE STATED ALL DIMENSIONS ARE IN MILLIMETRES.
5. DO NOT SCALE FROM THIS DRAWING.
6. DIMENSIONS TO BE CHECKED ON SITE BEFORE ANY WORK IS PUT IN HAND OR PREFABRICATED.
7. THIS DRAWING SHOULD ONLY BE USED FOR THE SPECIFIC SERVICES INTENDED.
8. THIS DRAWING SHOWS THE DESIGN INTENT ONLY. THE CONTRACTOR SHALL BE RESPONSIBLE FOR THE FULL CO-ORDINATION OF THE SERVICES INDICATED ON THIS AND ALL OTHER SERVICES DRAWINGS.
9. FINAL ACCESS AND SETTING OUT OF SERVICES SHALL BE AGREED BETWEEN THE ARCHITECT AND THE CONTRACTOR.
10. THE PROJECT NOTES ARE TO BE READ IN CONJUNCTION WITH ALL RELEVANT TECHNICAL SPECIFICATIONS.
11. WHERE ELECTRICAL SERVICES PASS THROUGH FIRE COMPARTMENTATION CEILING VOIDS, FLOOR VOIDS AND STRUCTURAL WALLS THE CONTRACTOR SHALL SLEEVE/SEAL THE OPENING WITH AN ACOUSTIC AND FIRE SEALANT APPROVED BY THE ARCHITECT.
12. THE CONTRACTOR SHALL REFER TO THE ARCHITECT'S DRAWINGS FOR DETAILS OF FIRE COMPARTMENTATION.
13. THE CONTRACTOR SHALL REFER TO THE ARCHITECT'S REFLECTED CEILING PLANS AND ROOM ELEVATIONS FOR THE EXACT LOCATION OF ALL SERVICES.
14. THE MAXIMUM NUMBER OF FIRE DEVICES PER LOOP SHALL NOT EXCEED THE SELECTED MANUFACTURER'S MAXIMUM ALLOWABLE POWER/LOOP AVAILABLE.
15. NO LOOP SHALL EXCEED THE MAXIMUM PERMITTED VOLTAGE DROP AS SPECIFIED BY THE SELECTED MANUFACTURER.
16. THE DEVICES INDICATED ON THE FIRE ALARM SCHEMATIC ARE INDICATIVE ONLY. THE CONTRACTOR SHALL SHOW ACTUAL DEVICES PER LOOP ON HIS WORKING DRAWINGS.
17. DRAWING HAS BEEN PRODUCED FROM INCOMPLETE RECORD INFORMATION AND VISUAL SITE SURVEYS. CONTRACTOR IS RESPONSIBLE FOR VALIDATING ACCURACY PRIOR TO WORKS.
18. CONTRACTOR TO PROVIDE SCHEDULE OF PROPOSED SERVICES ISOLATIONS PRIOR TO WORK COMMENCING.
19. DRAWINGS ARE INDICATIVE ONLY AND ARE SHOWN FOR THE DESIGN INTENT AND THE DESIGN & BUILD CONTRACTOR'S PRICING PURPOSE. THE CONTRACTOR SHALL VERIFY ALL ASPECTS OF THE DESIGN DURING HIS DESIGN PHASE.

P01 TENDER	11/04/2017	LH
Rev Description	Date	Approved

TENDER

Status/Suitability of Drawing

**BUROHAPPOLD
ENGINEERING**

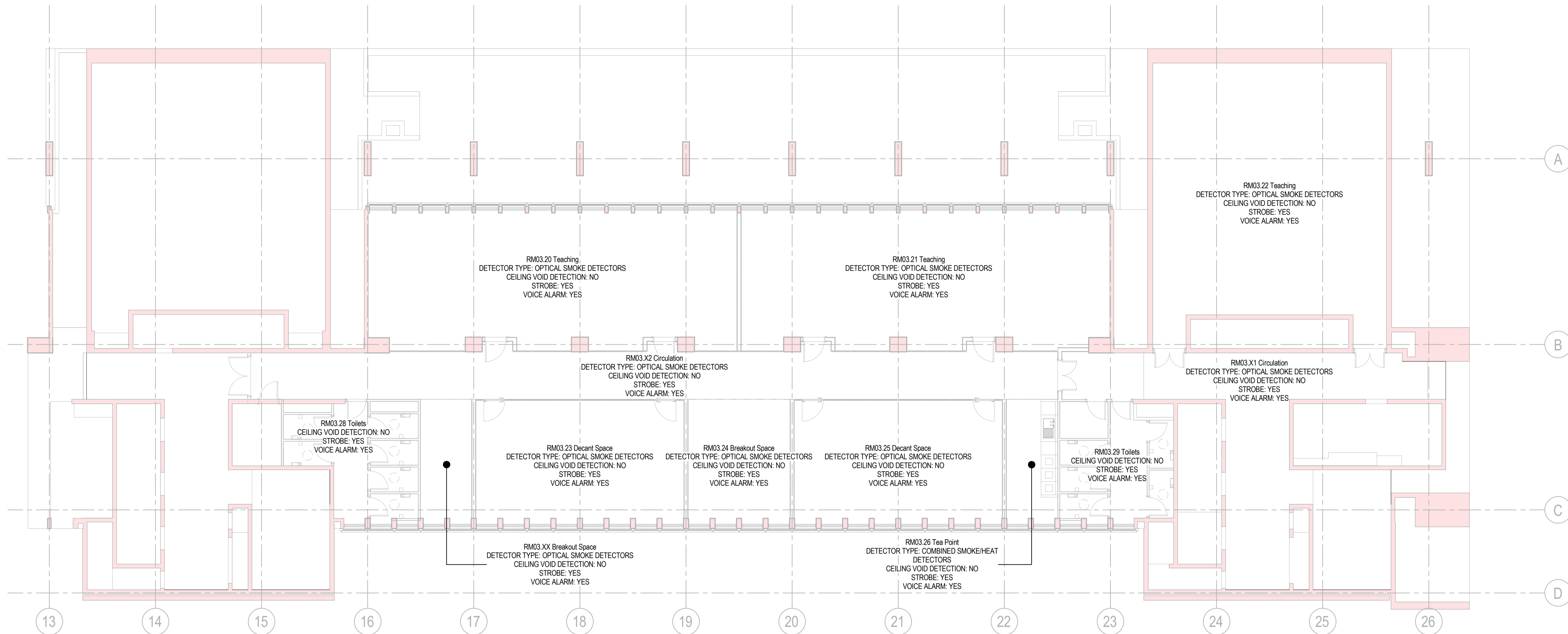
17 Newman Street
 London
 W1T 1PD
 UK

Tel: +44 (0)2079 279 700
 Fax: +44 (0)207 874 145
 Email: 035833@burohappold.com
 Web: www.burohappold.com

Architect *HawkinsBrown*
 Project **UCL Institute of Education**
 Dwg Title **Electrical Services
 Fire Alarm Layout
 Level 3 ISD**

Job No. **035833** Scale@A1
 1 : 100

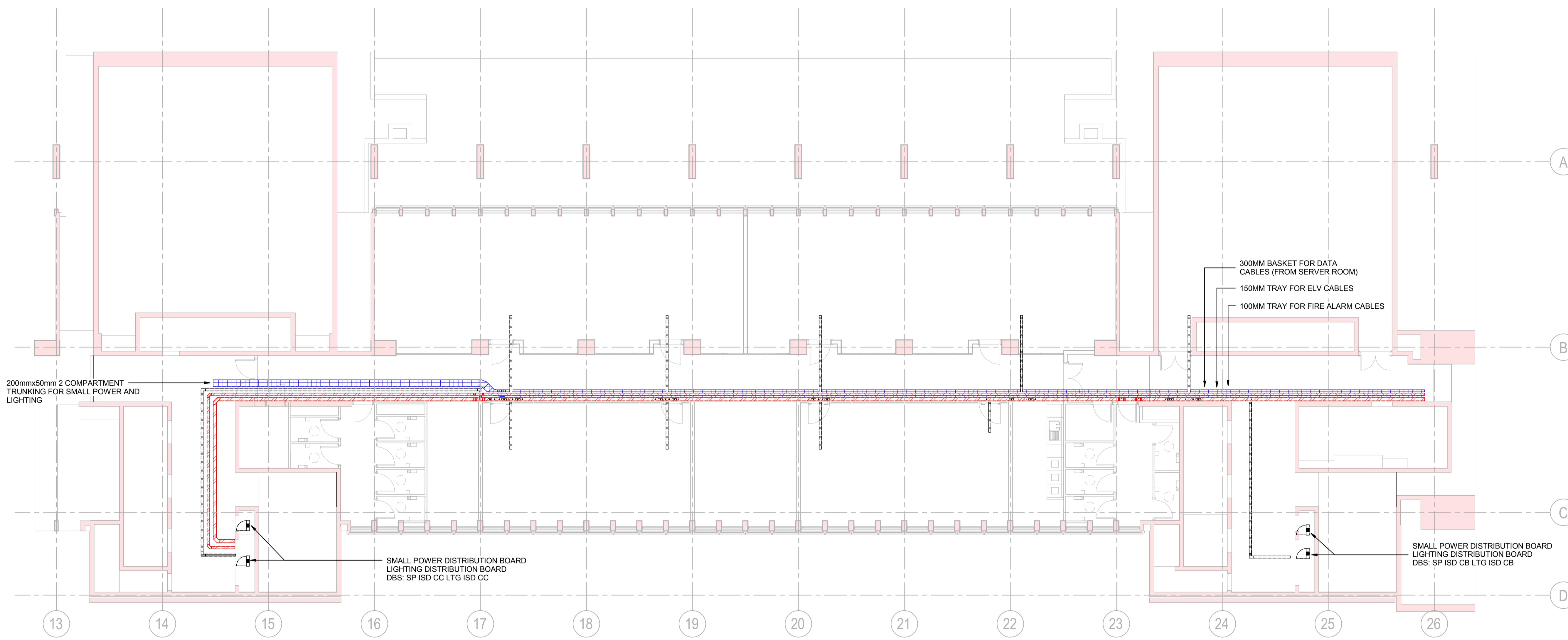
Drawing No. **20BW-BHE-S2-03-DR-E-XX-3000** Revision **P01**



1 Electrical Services Fire Alarm Layout - Level 3 ISD

SAFETY HEALTH AND ENVIRONMENTAL INFORMATION
IN ADDITION TO THE HAZARDS/RISKS NORMALLY ASSOCIATED WITH THE TYPES OF WORK DETAILED ON THIS DRAWING, NOTE THE FOLLOWING:
CONSTRUCTION
1. WORKING AT HEIGHT 2. LIFTING HEAVY EQUIPMENT 3. WORKING ADJACENT TO POTENTIALLY LIVE SERVICES 4. HANDLING CHEMICAL PRODUCTS 5. WORKING IN CONFINED SPACES 6. PRESENCE OF ASBESTOS
MAINTENANCE/CLEANING/OPERATION
1. HANDLING CHEMICAL PRODUCTS 2. WORKING AT HEIGHT 3. WORKING ADJACENT TO POTENTIALLY LIVE SERVICES
DECOMMISSIONING/DEMOLITION
1. PRESENCE OF LIVE SERVICES 2. PRESENCE OF ASBESTOS 3. WORKING AT HEIGHT 4. LIFTING HEAVY EQUIPMENT 5. PRESENCE OF FLOOR OPENINGS 6. ALWAYS SAFELY ISOLATE BEFORE COMMENCING ANY WORKS

- Notes**
- CONTAINMENT NOTES**
- THIS DRAWING IS TO BE READ IN CONJUNCTION WITH ALL OTHER DISCIPLINES, DRAWINGS, SCHEDULES AND SPECIFICATIONS, LEGENDS AND STANDARD DETAILS.
 - THIS DRAWING IS COPYRIGHT AND SHALL NOT BE REPRODUCED WITHOUT PERMISSION.
 - DIMENSIONS GOVERN ON ALL DRAWINGS AND DETAILS. SHOULD ANY DISCREPANCIES BE FOUND WITH THIS DRAWING AND ANY ASSOCIATED DRAWINGS OR SPECIFICATIONS THIS SHOULD BE BROUGHT TO THE ATTENTION OF THE M&E BUILDING SERVICES CONSULTANT IMMEDIATELY.
 - UNLESS OTHERWISE STATED ALL DIMENSIONS ARE IN MILLIMETRES.
 - DO NOT SCALE FROM THIS DRAWING.
 - DIMENSIONS TO BE CHECKED ON SITE BEFORE ANY WORK IS PUT IN HAND OR PREFABRICATED.
 - THIS DRAWING SHOULD ONLY BE USED FOR THE SPECIFIC SERVICES INTENDED.
 - THIS DRAWING SHOWS THE DESIGN INTENT ONLY. THE CONTRACTOR SHALL BE RESPONSIBLE FOR THE FULL CO-ORDINATION OF THE SERVICES INDICATED ON THIS AND ALL OTHER SERVICES DRAWINGS.
 - FINAL ACCESS AND SETTING OUT OF SERVICES SHALL BE AGREED BETWEEN THE ARCHITECT AND THE CONTRACTOR.
 - THE PROJECT NOTES ARE TO BE READ IN CONJUNCTION WITH ALL RELEVANT TECHNICAL SPECIFICATIONS.
 - WHERE ELECTRICAL SERVICES PASS THROUGH FIRE COMPARTMENTATION CEILING VOIDS, FLOOR VOIDS AND STRUCTURAL WALLS THE CONTRACTOR SHALL SLEEVE/SEAL THE OPENING WITH AN ACOUSTIC AND FIRE SEALANT APPROVED BY THE ARCHITECT.
 - THE CONTRACTOR SHALL REFER TO THE ARCHITECT'S DRAWINGS FOR DETAILS OF FIRE COMPARTMENTATION. THIS DRAWING ONLY SHOWS PRIMARY CONTAINMENT. THE CONTRACTOR SHALL BE RESPONSIBLE FOR THE DETAILING OF ALL SECONDARY CONTAINMENT.
 - THE CONTRACTOR SHALL REFER TO THE ARCHITECT'S REFLECTED CEILING PLANS AND ROOM ELEVATIONS FOR THE EXACT LOCATION OF ALL SERVICES.
 - DRAWING HAS BEEN PRODUCED FROM INCOMPLETE RECORD INFORMATION AND VISUAL SITE SURVEYS. CONTRACTOR IS RESPONSIBLE FOR VALIDATING ACCURACY PRIOR TO WORKS.
 - CONTRACTOR TO PROVIDE SCHEDULE OF PROPOSED SERVICES ISOLATIONS PRIOR TO WORK COMMENCING.
 - DRAWINGS ARE INDICATIVE ONLY AND ARE SHOWN FOR THE DESIGN INTENT AND THE DESIGN & BUILD CONTRACTOR'S PRICING PURPOSE. THE CONTRACTOR SHALL VERIFY ALL ASPECTS OF THE DESIGN DURING HIS DESIGN PHASE.



P01	TENDER	11/04/2017	LH
Rev	Description	Date	Approved

TENDER

Status/Stability of Drawing

BUROHAPPOLD
ENGINEERING

17 Newman Street
 London
 W1T 1PD
 UK

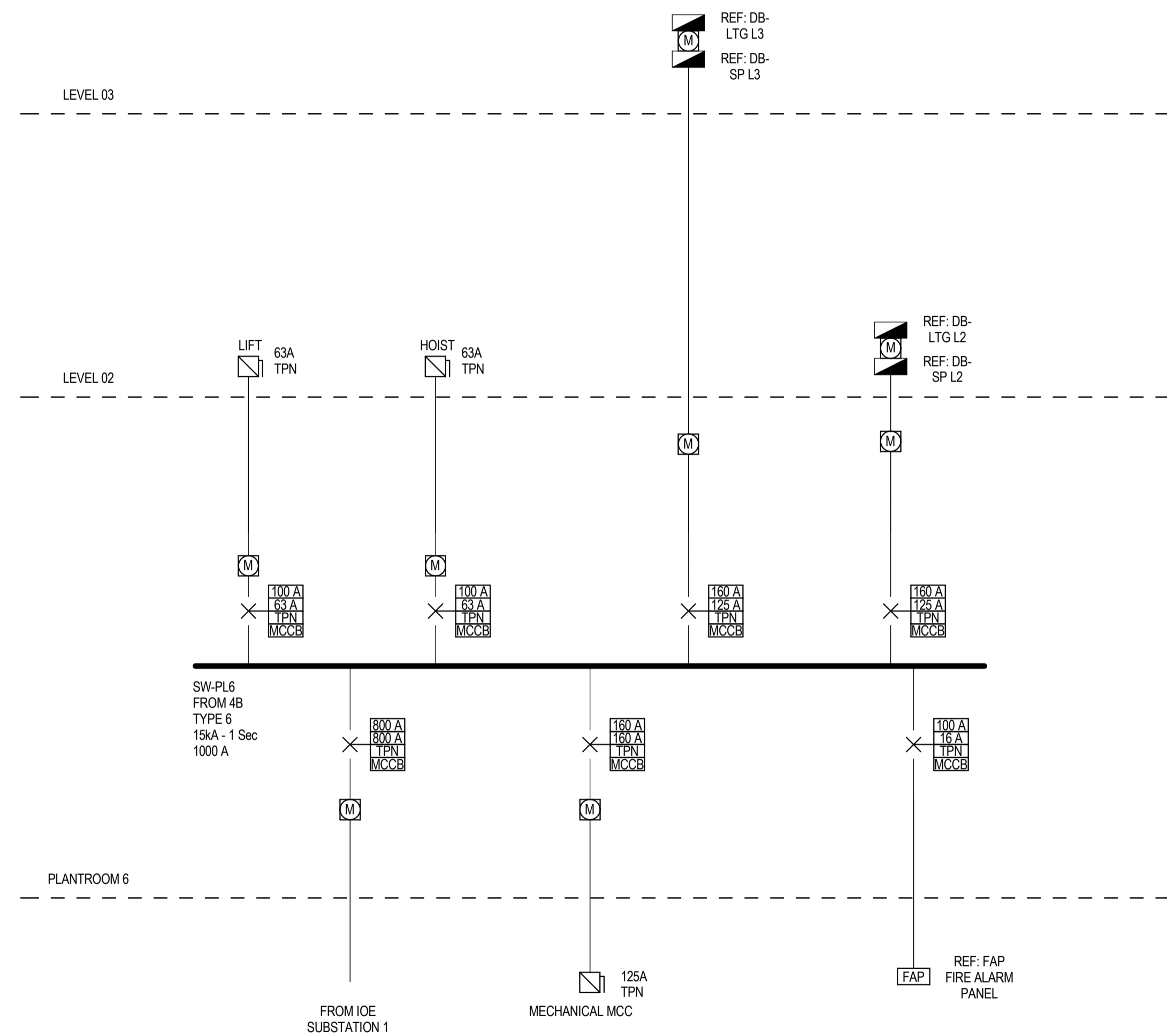
Tel: +44 (0)2079 279 700
 Fax: +44 (0)207 874 145
 Email: 035833@burohappold.com
 Web: www.burohappold.com

Architect: *HawkinsBrown*
 Project: **UCL Institute of Education**
 Dwg Title: **Electrical Services Containment Layout Level 3 ISD**

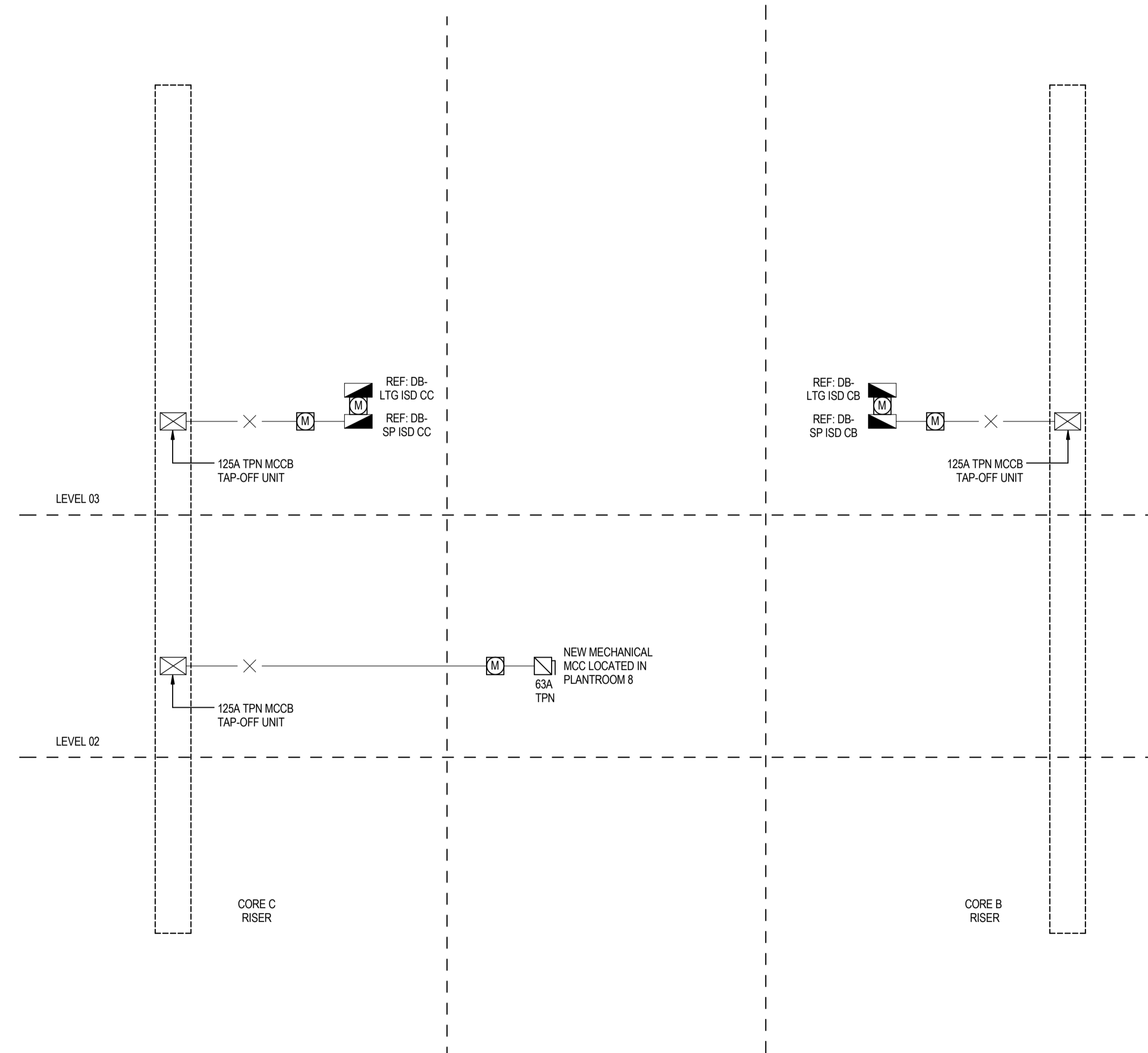
Job No. 035833	Scale@A1 1 : 100
Drawing No. 20BW-BHE-S2-03-DR-E-XX-4000	Revision P01

1 Electrical Services Containment Layout - Level 3 ISD

WING A SCHEMATIC



LEVEL 03 ISD AREA SCHEMATIC



© Buro Happold Limited or its group companies.
All rights reserved. Buro Happold and its group companies assert (unless otherwise agreed in writing) their rights under a 77 to 83 of the Copyright, Designs and Patents Act 1988.

DO NOT SCALE THIS DRAWING.

SAFETY HEALTH AND ENVIRONMENTAL INFORMATION

IN ADDITION TO THE HAZARDS/RISKS NORMALLY ASSOCIATED WITH THE TYPES OF WORK DETAILED ON THIS DRAWING, NOTE THE FOLLOWING:

CONSTRUCTION

- WORKING AT HEIGHT
- LIFTING HEAVY EQUIPMENT
- WORKING ADJACENT TO POTENTIALLY LIVE SERVICES
- HANDLING CHEMICAL PRODUCTS
- WORKING IN CONFINED SPACES
- PRESENCE OF ASBESTOS

MAINTENANCE/CLEANING/OPERATION

- HANDLING CHEMICAL PRODUCTS
- WORKING AT HEIGHT
- WORKING ADJACENT TO POTENTIALLY LIVE SERVICES

DECOMMISSIONING/DEMOLITION

- PRESENCE OF LIVE SERVICES
- PRESENCE OF ASBESTOS
- WORKING AT HEIGHT
- LIFTING HEAVY EQUIPMENT
- PRESENCE OF FLOOR OPENINGS
- ALWAYS SAFELY ISOLATE BEFORE COMMENCING ANY WORKS

- Notes**
- SCHEMATIC NOTES**
- THIS DRAWING IS TO BE READ IN CONJUNCTION WITH ALL OTHER DISCIPLINES, DRAWINGS, SCHEDULES AND SPECIFICATIONS, LEGENDS AND STANDARD DETAILS.
 - THIS DRAWING IS COPYRIGHT AND SHALL NOT BE REPRODUCED WITHOUT PERMISSION.
 - DIMENSIONS GOVERN ON ALL DRAWINGS AND DETAILS. SHOULD ANY DISCREPANCIES BE FOUND WITH THIS DRAWING AND ANY ASSOCIATED DRAWINGS OR SPECIFICATIONS THIS SHOULD BE BROUGHT TO THE ATTENTION OF THE M&E BUILDING SERVICES CONSULTANT IMMEDIATELY.
 - UNLESS OTHERWISE STATED ALL DIMENSIONS ARE IN MILLIMETRES.
 - DO NOT SCALE FROM THIS DRAWING.
 - DIMENSIONS TO BE CHECKED ON SITE BEFORE ANY WORK IS PUT IN HAND OR PREFABRICATED.
 - THIS DRAWING SHOULD ONLY BE USED FOR THE SPECIFIC SERVICES INTENDED.
 - THIS DRAWING SHOWS THE DESIGN INTENT ONLY. THE CONTRACTOR SHALL BE RESPONSIBLE FOR THE FULL CO-ORDINATION OF THE SERVICES INDICATED ON THIS AND ALL OTHER SERVICES DRAWINGS.
 - FINAL ACCESS AND SETTING OUT OF SERVICES SHALL BE AGREED BETWEEN THE ARCHITECT AND THE CONTRACTOR.
 - THE PROJECT NOTES ARE TO BE READ IN CONJUNCTION WITH ALL RELEVANT TECHNICAL SPECIFICATIONS.
 - WHERE ELECTRICAL SERVICES PASS THROUGH FIRE COMPARTMENTATION CEILING VOIDS, FLOOR VOIDS AND STRUCTURAL WALLS THE CONTRACTOR SHALL SLEEVE/SEAL THE OPENING WITH AN ACOUSTIC AND FIRE SEALANT APPROVED BY THE ARCHITECT.
 - THE CONTRACTOR SHALL REFER TO THE ARCHITECT'S DRAWINGS FOR DETAILS OF FIRE COMPARTMENTATION.
 - DRAWING HAS BEEN PRODUCED FROM INCOMPLETE RECORD INFORMATION AND VISUAL SITE SURVEYS. CONTRACTOR IS RESPONSIBLE FOR VALIDATING ACCURACY PRIOR TO WORKS.
 - CONTRACTOR TO PROVIDE SCHEDULE OF PROPOSED SERVICES ISOLATIONS PRIOR TO WORK COMMENCING.
 - DRAWINGS ARE INDICATIVE ONLY AND ARE SHOWN FOR THE DESIGN INTENT AND THE DESIGN & BUILD CONTRACTOR'S PRICING PURPOSE. THE CONTRACTOR SHALL VERIFY ALL ASPECTS OF THE DESIGN DURING HIS DESIGN PHASE.

P01	TENDER	11/04/2017	LH
Rev	Description	Date	Approved

TENDER

Status/Suitability of Drawing

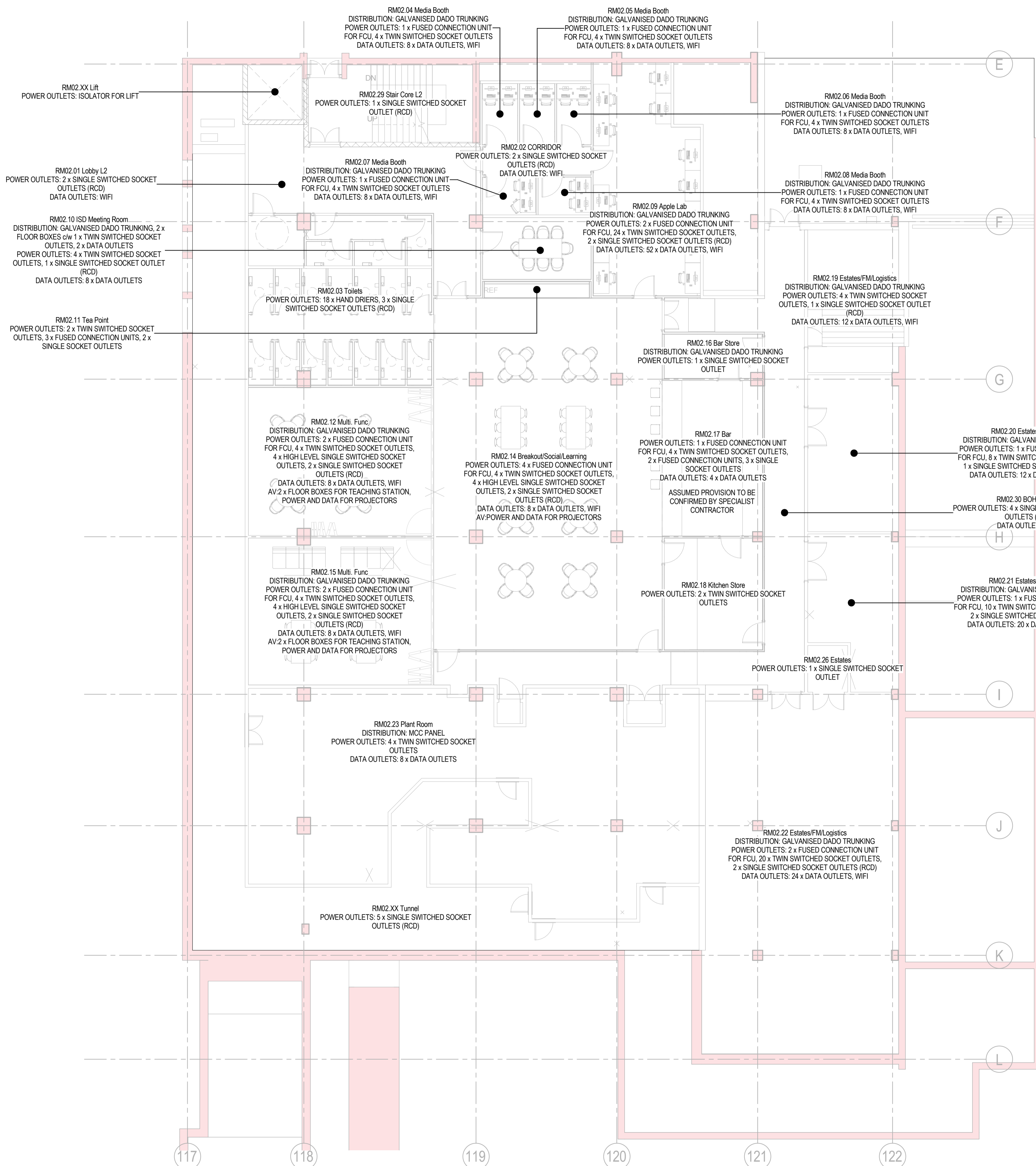
BUROHAPPOLD ENGINEERING

17 Newman Street
London
W1T 1PD
UK

Tel: +44 (0)2079 279 700
Fax: +44 (0)207 874 145
Email: 035833@burohappold.com
Web: www.burohappold.com

Architect: **HawkinsBrown**
Project: **UCL Institute of Education**
Dwg Title: **Electrical Services LV Schematic**

Job No. 035833	Scale@A1 1 : 1
Drawing No. 20BW-BHE-SW-XX-SC-E-XX-7000	Revision P01



© Buro Happold Limited or its group companies.
 All Rights Reserved. Buro Happold and its group companies accept no liability for errors or omissions in writing or in drawings under a 77 to 81 of the Copyright, Design and Patents Act 1988.

DO NOT SCALE THIS DRAWING.

SAFETY HEALTH AND ENVIRONMENTAL INFORMATION

IN ADDITION TO THE HAZARDS/RISKS NORMALLY ASSOCIATED WITH THE TYPES OF WORK DETAILED ON THIS DRAWING, NOTE THE FOLLOWING:

- CONSTRUCTION**
1. WORKING AT HEIGHT
 2. LIFTING HEAVY EQUIPMENT
 3. WORKING ADJACENT TO POTENTIALLY LIVE SERVICES
 4. HANDLING CHEMICAL PRODUCTS
 5. WORKING IN CONFINED SPACES
 6. PRESENCE OF ASBESTOS

- MAINTENANCE/CLEANING/OPERATION**
1. HANDLING CHEMICAL PRODUCTS
 2. WORKING AT HEIGHT
 3. WORKING ADJACENT TO POTENTIALLY LIVE SERVICES

- DECOMMISSIONING/DEMOLITION**
1. PRESENCE OF LIVE SERVICES
 2. PRESENCE OF ASBESTOS
 3. WORKING AT HEIGHT
 4. LIFTING HEAVY EQUIPMENT
 5. PRESENCE OF FLOOR OPENINGS
 6. ALWAYS SAFELY ISOLATE BEFORE COMMENCING ANY WORKS

Notes

SMALL POWER NOTES

1. THIS DRAWING IS TO BE READ IN CONJUNCTION WITH ALL OTHER DISCIPLINES, DRAWINGS, SCHEDULES AND SPECIFICATIONS, LEGENDS AND STANDARD DETAILS.
2. THIS DRAWING IS COPYRIGHT AND SHALL NOT BE REPRODUCED WITHOUT PERMISSION.
3. DIMENSIONS GOVERN ON ALL DRAWINGS AND DETAILS. SHOULD ANY DISCREPANCIES BE FOUND WITH THIS DRAWING AND ANY ASSOCIATED DRAWINGS OR SPECIFICATIONS THIS SHOULD BE BROUGHT TO THE ATTENTION OF THE M&E BUILDING SERVICES CONSULTANT IMMEDIATELY.
4. UNLESS OTHERWISE STATED ALL DIMENSIONS ARE IN MILLIMETRES.
5. DO NOT SCALE FROM THIS DRAWING.
6. DIMENSIONS TO BE CHECKED ON SITE BEFORE ANY WORK IS PUT IN HAND OR PREFABRICATED.
7. THIS DRAWING SHOULD ONLY BE USED FOR THE SPECIFIC SERVICES INTENDED.
8. THIS DRAWING SHOWS THE DESIGN INTENT ONLY. THE CONTRACTOR SHALL BE RESPONSIBLE FOR THE FULL CO-ORDINATION OF THE SERVICES INDICATED ON THIS AND ALL OTHER SERVICES DRAWINGS.
9. FINAL ACCESS AND SETTING OUT OF SERVICES SHALL BE AGREED BETWEEN THE ARCHITECT AND THE CONTRACTOR.
10. THE PROJECT NOTES ARE TO BE READ IN CONJUNCTION WITH ALL RELEVANT TECHNICAL SPECIFICATIONS.
11. WHERE ELECTRICAL SERVICES PASS THROUGH FIRE COMPARTMENTATION CEILING VOIDS, FLOOR VOIDS AND STRUCTURAL WALLS THE CONTRACTOR SHALL SLEEVE/SEAL THE OPENING WITH AN ACOUSTIC AND FIRE SEALANT APPROVED BY THE ARCHITECT.
12. THE CONTRACTOR SHALL REFER TO THE ARCHITECT'S DRAWINGS FOR DETAILS OF FIRE COMPARTMENTATION.
13. THE CONTRACTOR SHALL REFER TO THE ARCHITECT'S REFLECTED CEILING PLANS AND ROOM ELEVATIONS FOR THE EXACT LOCATION OF ALL SERVICES.
14. DRAWING HAS BEEN PRODUCED FROM INCOMPLETE RECORD INFORMATION AND VISUAL SITE SURVEYS. CONTRACTOR IS RESPONSIBLE FOR VALIDATING ACCURACY PRIOR TO WORKS.
15. CONTRACTOR TO PROVIDE SCHEDULE OF PROPOSED SERVICES ISOLATIONS PRIOR TO WORK COMMENCING.
16. DRAWINGS ARE INDICATIVE ONLY AND ARE SHOWN FOR THE DESIGN INTENT AND THE DESIGN & BUILD CONTRACTOR'S PRICING PURPOSE. THE CONTRACTOR SHALL VERIFY ALL ASPECTS OF THE DESIGN DURING HIS DESIGN PHASE.

R01	TENDER	11/04/2017	LH
Rev	Description	Date	Approved

TENDER

Statut/Satibility of Drawing

BUROHAPPOLD
ENGINEERING

17 Newman Street
 London
 W1T 1PD
 UK

Tel: +44 (0)2079 279 700
 Fax: +44 (0)207 874 145
 Email: 035833@burohappold.com
 Web: www.burohappold.com

Architect: *HawkinsBrown*
 Project: **UCL Institute of Education**
 Dwg Title: **Electrical Services
 Small Power & Data Layout
 Level 2 Wing A**

Job No: **035833**
 Scale: **A1**
 1 : 100

Drawing No: **20BW-BHE-WA-02-DR-E-XX-1000**
 Revision: **P01**

1 Electrical Services Small Power & Data Layout - Level 2 Wing A

SAFETY HEALTH AND ENVIRONMENTAL INFORMATION

IN ADDITION TO THE HAZARDS/RISKS NORMALLY ASSOCIATED WITH THE TYPES OF WORK DETAILED ON THIS DRAWING, NOTE THE FOLLOWING:

- CONSTRUCTION**
1. WORKING AT HEIGHT
 2. LIFTING HEAVY EQUIPMENT
 3. WORKING ADJACENT TO POTENTIALLY LIVE SERVICES
 4. HANDLING CHEMICAL PRODUCTS
 5. WORKING IN CONFINED SPACES
 6. PRESENCE OF ASBESTOS

- MAINTENANCE/CLEANING/OPERATION**
1. HANDLING CHEMICAL PRODUCTS
 2. WORKING AT HEIGHT
 3. WORKING ADJACENT TO POTENTIALLY LIVE SERVICES

- DECOMMISSIONING/DEMOLITION**
1. PRESENCE OF LIVE SERVICES
 2. PRESENCE OF ASBESTOS
 3. WORKING AT HEIGHT
 4. LIFTING HEAVY EQUIPMENT
 5. PRESENCE OF FLOOR OPENINGS
 6. ALWAYS SAFELY ISOLATE BEFORE COMMENCING ANY WORKS

Notes

LIGHTING NOTES

1. THIS DRAWING IS TO BE READ IN CONJUNCTION WITH ALL OTHER DISCIPLINES, DRAWINGS, SCHEDULES AND SPECIFICATIONS, LEGENDS AND STANDARD DETAILS.
2. THIS DRAWING IS COPYRIGHT AND SHALL NOT BE REPRODUCED WITHOUT PERMISSION.
3. DIMENSIONS GOVERN ON ALL DRAWINGS AND DETAILS. SHOULD ANY DISCREPANCIES BE FOUND WITH THIS DRAWING AND ANY ASSOCIATED DRAWINGS OR SPECIFICATIONS THIS SHOULD BE BROUGHT TO THE ATTENTION OF THE M&E BUILDING SERVICES CONSULTANT IMMEDIATELY.
4. UNLESS OTHERWISE STATED ALL DIMENSIONS ARE IN MILLIMETRES.
5. DO NOT SCALE FROM THIS DRAWING.
6. DIMENSIONS TO BE CHECKED ON SITE BEFORE ANY WORK IS PUT IN HAND OR PREFABRICATED.
7. THIS DRAWING SHOULD ONLY BE USED FOR THE SPECIFIC SERVICES INTENDED.
8. THIS DRAWING SHOWS THE DESIGN INTENT ONLY. THE CONTRACTOR SHALL BE RESPONSIBLE FOR THE FULL CO-ORDINATION OF THE SERVICES INDICATED ON THIS AND ALL OTHER SERVICES DRAWINGS.
9. FINAL ACCESS AND SETTING OUT OF SERVICES SHALL BE AGREED BETWEEN THE ARCHITECT AND THE CONTRACTOR.
10. THE PROJECT NOTES ARE TO BE READ IN CONJUNCTION WITH ALL RELEVANT TECHNICAL SPECIFICATIONS.
11. WHERE ELECTRICAL SERVICES PASS THROUGH FIRE COMPARTMENTATION CEILING VOIDS, FLOOR VOIDS AND STRUCTURAL WALLS THE CONTRACTOR SHALL SLEEVE/SEAL THE OPENING WITH AN ACOUSTIC AND FIRE SEALANT APPROVED BY THE ARCHITECT.
12. THE CONTRACTOR SHALL REFER TO THE ARCHITECT'S DRAWINGS FOR DETAILS OF FIRE COMPARTIMENTATION.
13. FOR THE SPECIFICATION OF ALL LUMINAIRES PLEASE REFER TO THE LUMINAIRE SCHEDULE.
14. THE CONTRACTOR SHALL REFER TO THE ARCHITECT'S REFLECTED CEILING PLANS AND ROOM ELEVATIONS FOR THE EXACT LOCATION OF ALL SERVICES.
15. DRAWING HAS BEEN PRODUCED FROM INCOMPLETE RECORD INFORMATION AND VISUAL SITE SURVEYS. CONTRACTOR IS RESPONSIBLE FOR VALIDATING ACCURACY PRIOR TO WORKS.
16. CONTRACTOR TO PROVIDE SCHEDULE OF PROPOSED SERVICES ISOLATIONS PRIOR TO WORK COMMENCING.
17. DRAWINGS ARE INDICATIVE ONLY AND ARE SHOWN FOR THE DESIGN INTENT AND THE DESIGN & BUILD CONTRACTOR'S PRICING PURPOSE. THE CONTRACTOR SHALL VERIFY ALL ASPECTS OF THE DESIGN DURING HIS DESIGN PHASE.

Rev	Description	Date	Approved
P01	TENDER	11/04/2017	LH

TENDER

Statutory/Validity of Drawing

BUROHAPPOLD
ENGINEERING

17 Newman Street
 London W1T 1PD
 UK

Tel: +44 (0)2079 279 700
 Fax: +44 (0)207 874 145
 Email: 035833@burohappold.com
 Web: www.burohappold.com

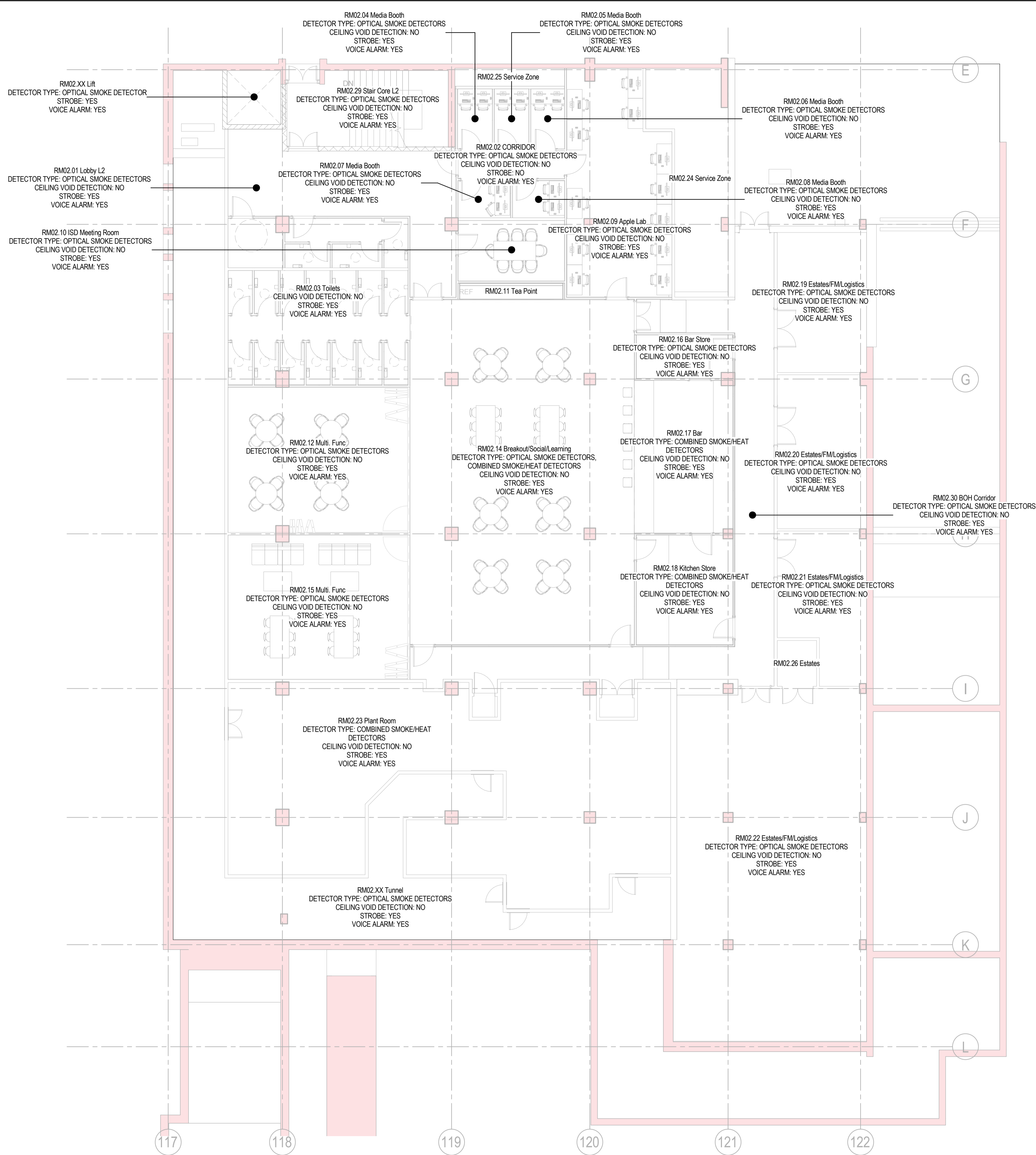
Architect: *HawkinsBrown*
 Project: **UCL Institute of Education**
 Dwg Title: **Electrical Services Lighting Layout Level 2 Wing A**

Job No: **035833**
 Scale: **1 : 100**

Drawing No: **20BW-BHE-WA-02-DR-E-XX-2000**
 Revision: **P01**



1 Electrical Services Lighting Layout - Level 2 Wing A



© Buro Happold Limited or its group companies.
 All Rights Reserved. Buro Happold and its group companies accept (unless otherwise agreed in writing) their rights under a 77 to 81 of the Copyright, Designs and Patents Act 1988.

DO NOT SCALE THIS DRAWING.

SAFETY HEALTH AND ENVIRONMENTAL INFORMATION

IN ADDITION TO THE HAZARDS/RISKS NORMALLY ASSOCIATED WITH THE TYPES OF WORK DETAILED ON THIS DRAWING, NOTE THE FOLLOWING:

CONSTRUCTION

- WORKING AT HEIGHT
- LIFTING HEAVY EQUIPMENT
- WORKING ADJACENT TO POTENTIALLY LIVE SERVICES
- HANDLING CHEMICAL PRODUCTS
- WORKING IN CONFINED SPACES
- PRESENCE OF ASBESTOS

MAINTENANCE/CEILING OPERATION

HANDLING CHEMICAL PRODUCTS

- WORKING AT HEIGHT
- WORKING ADJACENT TO POTENTIALLY LIVE SERVICES

DECOMMISSIONING/DEMOLITION

- PRESENCE OF LIVE SERVICES
- PRESENCE OF ASBESTOS
- WORKING AT HEIGHT
- LIFTING HEAVY EQUIPMENT
- PRESENCE OF FLOOR OPENINGS
- ALWAYS SAFELY ISOLATE BEFORE COMMENCING ANY WORKS

Notes

FIRE ALARM NOTES

- THIS DRAWING IS TO BE READ IN CONJUNCTION WITH ALL OTHER DISCIPLINES, DRAWINGS, SCHEDULES AND SPECIFICATIONS, LEGENDS AND STANDARD DETAILS.
- THIS DRAWING IS COPYRIGHT AND SHALL NOT BE REPRODUCED WITHOUT PERMISSION.
- DIMENSIONS GOVERN ON ALL DRAWINGS AND DETAILS. SHOULD ANY DISCREPANCIES BE FOUND WITH THIS DRAWING AND ANY ASSOCIATED DRAWINGS OR SPECIFICATIONS THIS SHOULD BE BROUGHT TO THE ATTENTION OF THE M&E BUILDING SERVICES CONSULTANT IMMEDIATELY.
- UNLESS OTHERWISE STATED ALL DIMENSIONS ARE IN MILLIMETRES.
- DO NOT SCALE FROM THIS DRAWING.
- DIMENSIONS TO BE CHECKED ON SITE BEFORE ANY WORK IS PUT IN HAND OR PREFABRICATED.
- THIS DRAWING SHOULD ONLY BE USED FOR THE SPECIFIC SERVICES INTENDED.
- THIS DRAWING SHOWS THE DESIGN INTENT ONLY. THE CONTRACTOR SHALL BE RESPONSIBLE FOR THE FULL CO-ORDINATION OF THE SERVICES INDICATED ON THIS AND ALL OTHER SERVICES DRAWINGS.
- FINAL ACCESS AND SETTING OUT OF SERVICES SHALL BE AGREED BETWEEN THE ARCHITECT AND THE CONTRACTOR.
- THE PROJECT NOTES ARE TO BE READ IN CONJUNCTION WITH ALL RELEVANT TECHNICAL SPECIFICATIONS.
- WHERE ELECTRICAL SERVICES PASS THROUGH FIRE COMPARTMENTATION CEILING VOIDS, FLOOR VOIDS AND STRUCTURAL WALLS THE CONTRACTOR SHALL SLEEVE/SEAL THE OPENING WITH AN ACOUSTIC AND FIRE SEALANT APPROVED BY THE ARCHITECT.
- THE CONTRACTOR SHALL REFER TO THE ARCHITECT'S DRAWINGS FOR DETAILS OF FIRE COMPARTMENTATION.
- THE CONTRACTOR SHALL REFER TO THE ARCHITECT'S REFLECTED CEILING PLANS AND ROOM ELEVATIONS FOR THE EXACT LOCATION OF ALL SERVICES.
- THE MAXIMUM NUMBER OF FIRE DEVICES PER LOOP SHALL NOT EXCEED THE SELECTED MANUFACTURER'S MAXIMUM ALLOWABLE POWER/LOOP AVAILABLE.
- NO LOOP SHALL EXCEED THE MAXIMUM PERMITTED VOLTAGE DROP AS SPECIFIED BY THE SELECTED MANUFACTURER.
- THE DEVICES INDICATED ON THE FIRE ALARM SCHEMATIC ARE INDICATIVE ONLY. THE CONTRACTOR SHALL SHOW ACTUAL DEVICES PER LOOP ON HIS WORKING DRAWINGS.
- DRAWING HAS BEEN PRODUCED FROM INCOMPLETE RECORD INFORMATION AND VISUAL SITE SURVEYS. CONTRACTOR IS RESPONSIBLE FOR VALIDATING ACCURACY PRIOR TO WORKS.
- CONTRACTOR TO PROVIDE SCHEDULE OF PROPOSED SERVICES ISOLATIONS PRIOR TO WORK COMMENCING.
- DRAWINGS ARE INDICATIVE ONLY AND ARE SHOWN FOR THE DESIGN INTENT AND THE DESIGN & BUILD CONTRACTOR'S PRICING PURPOSE. THE CONTRACTOR SHALL VERIFY ALL ASPECTS OF THE DESIGN DURING HIS DESIGN PHASE.

P01	TENDER	11/04/2017	LH
Rev	Description	Date	Approved

TENDER

Statutory/Validity of Drawing

BUROHAPPOLD
ENGINEERING

17 Newman Street
 London
 W1T 1PD
 UK

Tel: +44 (0)2079 279 700
 Fax: +44 (0)207 874 145
 Email: 035833@burohappold.com
 Web: www.burohappold.com

Architect: *HawkinsBrown*
 Project: **UCL Institute of Education**
 Dwg Title: **Electrical Services
 Fire Alarm Layout
 Level 2 Wing A**

Job No: **035833**
 Scale: **1 : 100**

Drawing No: **20BW-BHE-WA-02-DR-E-XX-3000**

Revision: **P01**

1 Electrical Services Fire Alarm Layout - Level 2 Wing A

DO NOT SCALE THIS DRAWING.

SAFETY HEALTH AND ENVIRONMENTAL INFORMATION

IN ADDITION TO THE HAZARDS/RISKS NORMALLY ASSOCIATED WITH THE TYPES OF WORK DETAILED ON THIS DRAWING, NOTE THE FOLLOWING:

- CONSTRUCTION**
1. WORKING AT HEIGHT
 2. LIFTING HEAVY EQUIPMENT
 3. WORKING ADJACENT TO POTENTIALLY LIVE SERVICES
 4. HANDLING CHEMICAL PRODUCTS
 5. WORKING IN CONFINED SPACES
 6. PRESENCE OF ASBESTOS

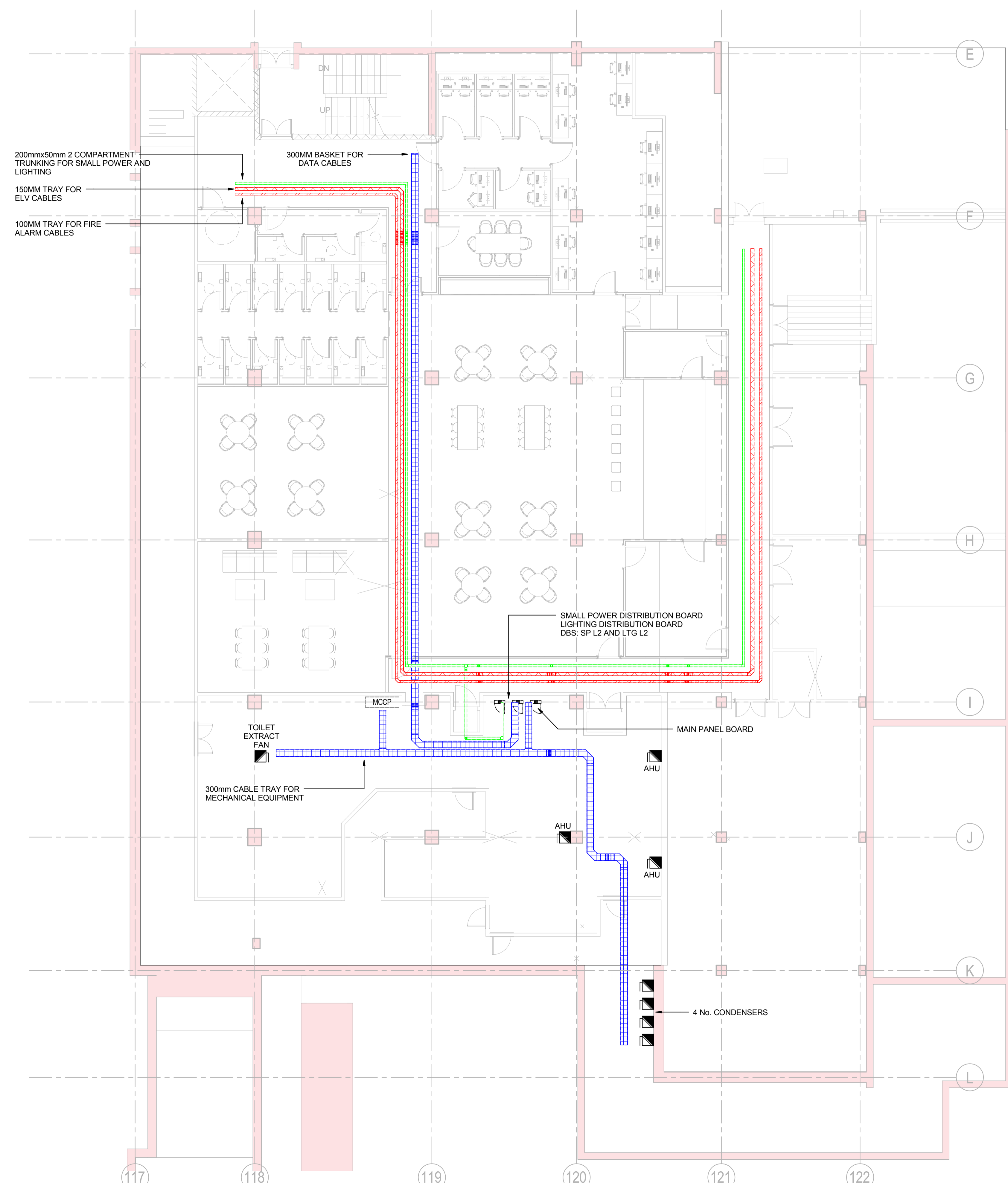
- MAINTENANCE/CLEANING/OPERATION**
1. HANDLING CHEMICAL PRODUCTS
 2. WORKING AT HEIGHT
 3. WORKING ADJACENT TO POTENTIALLY LIVE SERVICES

- DECOMMISSIONING/DEMOLITION**
1. PRESENCE OF LIVE SERVICES
 2. PRESENCE OF ASBESTOS
 3. WORKING AT HEIGHT
 4. LIFTING HEAVY EQUIPMENT
 5. PRESENCE OF FLOOR OPENINGS
 6. ALWAYS SAFELY ISOLATE BEFORE COMMENCING ANY WORKS

Notes

CONTAINMENT NOTES

1. THIS DRAWING IS TO BE READ IN CONJUNCTION WITH ALL OTHER DISCIPLINES, DRAWINGS, SCHEDULES AND SPECIFICATIONS, LEGENDS AND STANDARD DETAILS.
2. THIS DRAWING IS COPYRIGHT AND SHALL NOT BE REPRODUCED WITHOUT PERMISSION.
3. DIMENSIONS GOVERN ON ALL DRAWINGS AND DETAILS. SHOULD ANY DISCREPANCIES BE FOUND WITH THIS DRAWING AND ANY ASSOCIATED DRAWINGS OR SPECIFICATIONS THIS SHOULD BE BROUGHT TO THE ATTENTION OF THE M&E BUILDING SERVICES CONSULTANT IMMEDIATELY.
4. UNLESS OTHERWISE STATED ALL DIMENSIONS ARE IN MILLIMETRES.
5. DO NOT SCALE FROM THIS DRAWING.
6. DIMENSIONS TO BE CHECKED ON SITE BEFORE ANY WORK IS PUT IN HAND OR PREFABRICATED.
7. THIS DRAWING SHOULD ONLY BE USED FOR THE SPECIFIC SERVICES INTENDED.
8. THIS DRAWING SHOWS THE DESIGN INTENT ONLY. THE CONTRACTOR SHALL BE RESPONSIBLE FOR THE FULL CO-ORDINATION OF THE SERVICES INDICATED ON THIS AND ALL OTHER SERVICES DRAWINGS.
9. FINAL ACCESS AND SETTING OUT OF SERVICES SHALL BE AGREED BETWEEN THE ARCHITECT AND THE CONTRACTOR.
10. THE PROJECT NOTES ARE TO BE READ IN CONJUNCTION WITH ALL RELEVANT TECHNICAL SPECIFICATIONS.
11. WHERE ELECTRICAL SERVICES PASS THROUGH FIRE COMPARTMENTATION CEILING VOIDS, FLOOR VOIDS AND STRUCTURAL WALLS THE CONTRACTOR SHALL SLEEVE/SEAL THE OPENING WITH AN ACOUSTIC AND FIRE SEALANT APPROVED BY THE ARCHITECT.
12. THE CONTRACTOR SHALL REFER TO THE ARCHITECT'S DRAWINGS FOR DETAILS OF FIRE COMPARTIMENTATION.
13. THIS DRAWING ONLY SHOWS PRIMARY CONTAINMENT. THE CONTRACTOR SHALL BE RESPONSIBLE FOR THE DETAILING OF ALL SECONDARY CONTAINMENT.
14. THE CONTRACTOR SHALL REFER TO THE ARCHITECT'S REFLECTED CEILING PLANS AND ROOM ELEVATIONS FOR THE EXACT LOCATION OF ALL SERVICES.
15. DRAWING HAS BEEN PRODUCED FROM INCOMPLETE RECORD INFORMATION AND VISUAL SITE SURVEYS. CONTRACTOR IS RESPONSIBLE FOR VALIDATING ACCURACY PRIOR TO WORKS.
16. CONTRACTOR TO PROVIDE SCHEDULE OF PROPOSED SERVICES ISOLATIONS PRIOR TO WORK COMMENCING.
17. DRAWINGS ARE INDICATIVE ONLY AND ARE SHOWN FOR THE DESIGN INTENT AND THE DESIGN & BUILD CONTRACTOR'S PRICING PURPOSE. THE CONTRACTOR SHALL VERIFY ALL ASPECTS OF THE DESIGN DURING HIS DESIGN PHASE.



200mmx50mm 2 COMPARTMENT TRUNKING FOR SMALL POWER AND LIGHTING
 150MM TRAY FOR ELV CABLES
 100MM TRAY FOR FIRE ALARM CABLES

300MM BASKET FOR DATA CABLES

SMALL POWER DISTRIBUTION BOARD LIGHTING DISTRIBUTION BOARD DBS: SP L2 AND LTG L2

TOILET EXTRACT FAN

300mm CABLE TRAY FOR MECHANICAL EQUIPMENT

MAIN PANEL BOARD

AHU

AHU

AHU

4 No. CONDENSERS

117

118

119

120

121

122

E

F

G

H

I

J

K

L

1 Electrical Services Containment Layout - Level 2 Wing A

P01	TENDER	11/04/2017	LH
Rev	Description	Date	Approved

TENDER

Statut/Suitability of Drawing

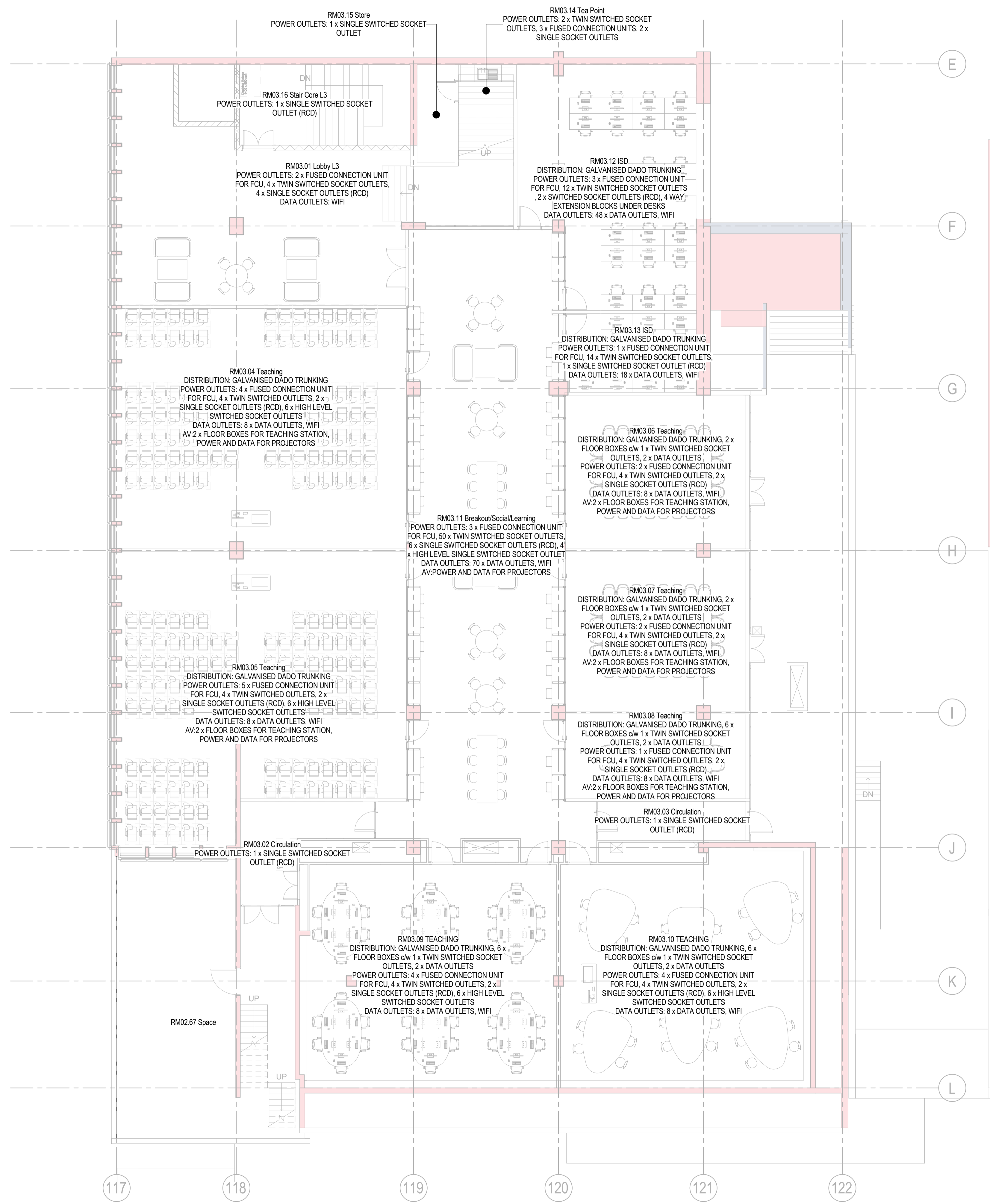
BUROHAPPOLD
ENGINEERING

17 Newman Street London W1T 1PD UK
 Tel: +44 (0)2079 279 700
 Fax: +44 (0)207 874 145
 Email: 035833@burohappold.com
 Web: www.burohappold.com

Architect: HawkinsBrown
 Project: UCL Institute of Education
 Dwg Title: Electrical Services Containment Layout Level 2 Wing A

Job No: 035833
 Scale: A1
 1 : 100

Drawing No: 20BW-BHE-WA-02-DR-E-XX-4000
 Revision: P01



1 Electrical Services Small Power & Data Layout - Level 3 Wing A

© Buro Happold Limited or its group companies.
 All rights reserved. Buro Happold and its group companies accept no liability for errors or omissions in this drawing unless otherwise agreed in writing under a J7 to B1 of the Copyright, Design and Patents Act 1988.

- DO NOT SCALE THIS DRAWING.
- SAFETY HEALTH AND ENVIRONMENTAL INFORMATION**
- IN ADDITION TO THE HAZARDS/RISKS NORMALLY ASSOCIATED WITH THE TYPES OF WORK DETAILED ON THIS DRAWING, NOTE THE FOLLOWING:
- CONSTRUCTION**
- WORKING AT HEIGHT
 - LIFTING HEAVY EQUIPMENT
 - WORKING ADJACENT TO POTENTIALLY LIVE SERVICES
 - HANDLING CHEMICAL PRODUCTS
 - WORKING IN CONFINED SPACES
 - PRESENCE OF ASBESTOS
- MAINTENANCE/LEANING/OPERATION**
- HANDLING CHEMICAL PRODUCTS
 - WORKING AT HEIGHT
 - WORKING ADJACENT TO POTENTIALLY LIVE SERVICES
- DECOMMISSIONING/DEMOLITION**
- PRESENCE OF LIVE SERVICES
 - PRESENCE OF ASBESTOS
 - WORKING AT HEIGHT
 - LIFTING HEAVY EQUIPMENT
 - PRESENCE OF FLOOR OPENINGS
 - ALWAYS SAFELY ISOLATE BEFORE COMMENCING ANY WORKS

- Notes**
- SMALL POWER NOTES**
- THIS DRAWING IS TO BE READ IN CONJUNCTION WITH ALL OTHER DISCIPLINES, DRAWINGS, SCHEDULES AND SPECIFICATIONS, LEGENDS AND STANDARD DETAILS.
 - THIS DRAWING IS COPYRIGHT AND SHALL NOT BE REPRODUCED WITHOUT PERMISSION.
 - DIMENSIONS GOVERN ON ALL DRAWINGS AND DETAILS. SHOULD ANY DISCREPANCIES BE FOUND WITH THIS DRAWING AND ANY ASSOCIATED DRAWINGS OR SPECIFICATIONS THIS SHOULD BE BROUGHT TO THE ATTENTION OF THE M&E BUILDING SERVICES CONSULTANT IMMEDIATELY.
 - UNLESS OTHERWISE STATED ALL DIMENSIONS ARE IN MILLIMETRES.
 - DO NOT SCALE FROM THIS DRAWING.
 - DIMENSIONS TO BE CHECKED ON SITE BEFORE ANY WORK IS PUT IN HAND OR PREFABRICATED.
 - THIS DRAWING SHOULD ONLY BE USED FOR THE SPECIFIC SERVICES INTENDED.
 - THIS DRAWING SHOWS THE DESIGN INTENT ONLY. THE CONTRACTOR SHALL BE RESPONSIBLE FOR THE FULL CO-ORDINATION OF THE SERVICES INDICATED ON THIS AND ALL OTHER SERVICES DRAWINGS.
 - FINAL ACCESS AND SETTING OUT OF SERVICES SHALL BE AGREED BETWEEN THE ARCHITECT AND THE CONTRACTOR.
 - THE PROJECT NOTES ARE TO BE READ IN CONJUNCTION WITH ALL RELEVANT TECHNICAL SPECIFICATIONS.
 - WHERE ELECTRICAL SERVICES PASS THROUGH FIRE COMPARTMENTATION CEILING VOIDS, FLOOR VOIDS AND STRUCTURAL WALLS THE CONTRACTOR SHALL SLEEVE/SEAL THE OPENING WITH AN ACOUSTIC AND FIRE SEALANT APPROVED BY THE ARCHITECT.
 - THE CONTRACTOR SHALL REFER TO THE ARCHITECT'S DRAWINGS FOR DETAILS OF FIRE COMPARTMENTATION.
 - THE CONTRACTOR SHALL REFER TO THE ARCHITECT'S REFLECTED CEILING PLANS AND ROOM ELEVATIONS FOR THE EXACT LOCATION OF ALL SERVICES.
 - DRAWING HAS BEEN PRODUCED FROM INCOMPLETE RECORD INFORMATION AND VISUAL SITE SURVEYS. CONTRACTOR IS RESPONSIBLE FOR VALIDATING ACCURACY PRIOR TO WORKS.
 - CONTRACTOR TO PROVIDE SCHEDULE OF PROPOSED SERVICES ISOLATIONS PRIOR TO WORK COMMENCING.
 - DRAWINGS ARE INDICATIVE ONLY AND ARE SHOWN FOR THE DESIGN INTENT AND THE DESIGN & BUILD CONTRACTOR'S PRICING PURPOSE. THE CONTRACTOR SHALL VERIFY ALL ASPECTS OF THE DESIGN DURING HIS DESIGN PHASE.

P01	TENDER	11/04/2017	LH
Rev	Description	Date	Approved

TENDER

Status/Validity of Drawing

BUROHAPPOLD
ENGINEERING

17 Newman Street
 London
 W1T 1PD
 UK

Tel: +44 (0)2079 279 700
 Fax: +44 (0)207 874 145
 Email: 035833@burohappold.com
 Web: www.burohappold.com

Architect: *HawkinsBrown*
 Project: **UCL Institute of Education**
 Dwg Title: **Electrical Services
 Small Power & Data Layout
 Level 3 Wing A**

Job No. 035833	Scale@A1 1 : 100
Drawing No. 20BW-BHE-WA-03-DR-E-XX-1000	Revision P01