

- THIS DRAWING IS TO BE READ IN CONJUNCTION WITH ALL OTHER DISCIPLINES, DRAWINGS, SCHEDULES AND SPECIFICATIONS, LEGENDS AND STANDARD DETAILS.
- THIS DRAWING IS COPYRIGHT AND SHALL NOT BE REPRODUCED WITHOUT PERMISSION.
- DIMENSIONS GOVERN ON ALL DRAWINGS AND DETAILS. SHOULD ANY DISCREPANCIES BE FOUND WITH THIS DRAWING AND ANY ASSOCIATED DRAWINGS OR SPECIFICATIONS THIS SHOULD BE BROUGHT TO THE ATTENTION OF THE M&E BUILDING SERVICES CONSULTANT IMMEDIATELY.
- UNLESS OTHERWISE STATED ALL DIMENSIONS ARE IN MILLIMETRES.
- DO NOT SCALE FROM THIS DRAWING.
- DIMENSIONS TO BE CHECKED ON SITE BEFORE ANY WORK IS PUT IN HAND OR PREFABRICATED.
- THIS DRAWING SHOULD ONLY BE USED FOR THE SPECIFIC SERVICES INTENDED.
- THIS DRAWING SHOWS THE DESIGN INTENT ONLY. THE CONTRACTOR SHALL BE RESPONSIBLE FOR THE FULL CO-ORDINATION OF THE SERVICES INDICATED ON THIS AND ALL OTHER SERVICES DRAWINGS.
- FINAL ACCESS AND SETTING OUT OF SERVICES SHALL BE AGREED BETWEEN THE ARCHITECT AND THE CONTRACTOR. THE PROJECT NOTES ARE TO BE READ IN CONJUNCTION WITH ALL RELEVANT TECHNICAL SPECIFICATIONS.
- WHERE PUBLIC HEALTH SERVICES PASS THROUGH FIRE COMPARTMENTATION CEILING VOIDS, FLOOR VOIDS AND STRUCTURAL WALLS THE CONTRACTOR SHALL SLEEVE/SEAL THE OPENING WITH AN ACOUSTIC AND FIRE SEALANT APPROVED BY THE ARCHITECT.
- THE CONTRACTOR SHALL REFER TO THE ARCHITECT'S DRAWINGS FOR DETAILS OF FIRE COMPARTMENTATION.
- STEEL/STAINLESS STEEL AND IRON PIPEWORK ARE DENOTED BY THEIR INTERNAL BORE SIZE.
- COPPER AND PLASTIC PIPEWORK ARE DENOTED BY THEIR EXTERNAL DIAMETER.
- DRAWING HAS BEEN PRODUCED FROM INCOMPLETE RECORD INFORMATION AND VISUAL SITE SURVEYS. CONTRACTOR IS RESPONSIBLE FOR VALIDATING ACCURACY PRIOR TO WORKS.
- CONTRACTOR TO PROVIDE SCHEDULE OF PROPOSED SERVICES ISOLATIONS PRIOR TO WORK COMMENCING.
- DRAWINGS ARE INDICATIVE ONLY AND ARE SHOWN FOR THE DESIGN INTENT AND THE DESIGN & BUILD CONTRACTOR'S PRICING PURPOSE. THE CONTRACTOR SHALL VERIFY ALL ASPECTS OF THE DESIGN DURING HIS DESIGN PHASE.

P01	TENDER	11/04/2017	LH
Rev	Description	Date	Approved

TENDER

Status/Suitability of Drawing

**BUROHAPPOLD
ENGINEERING**

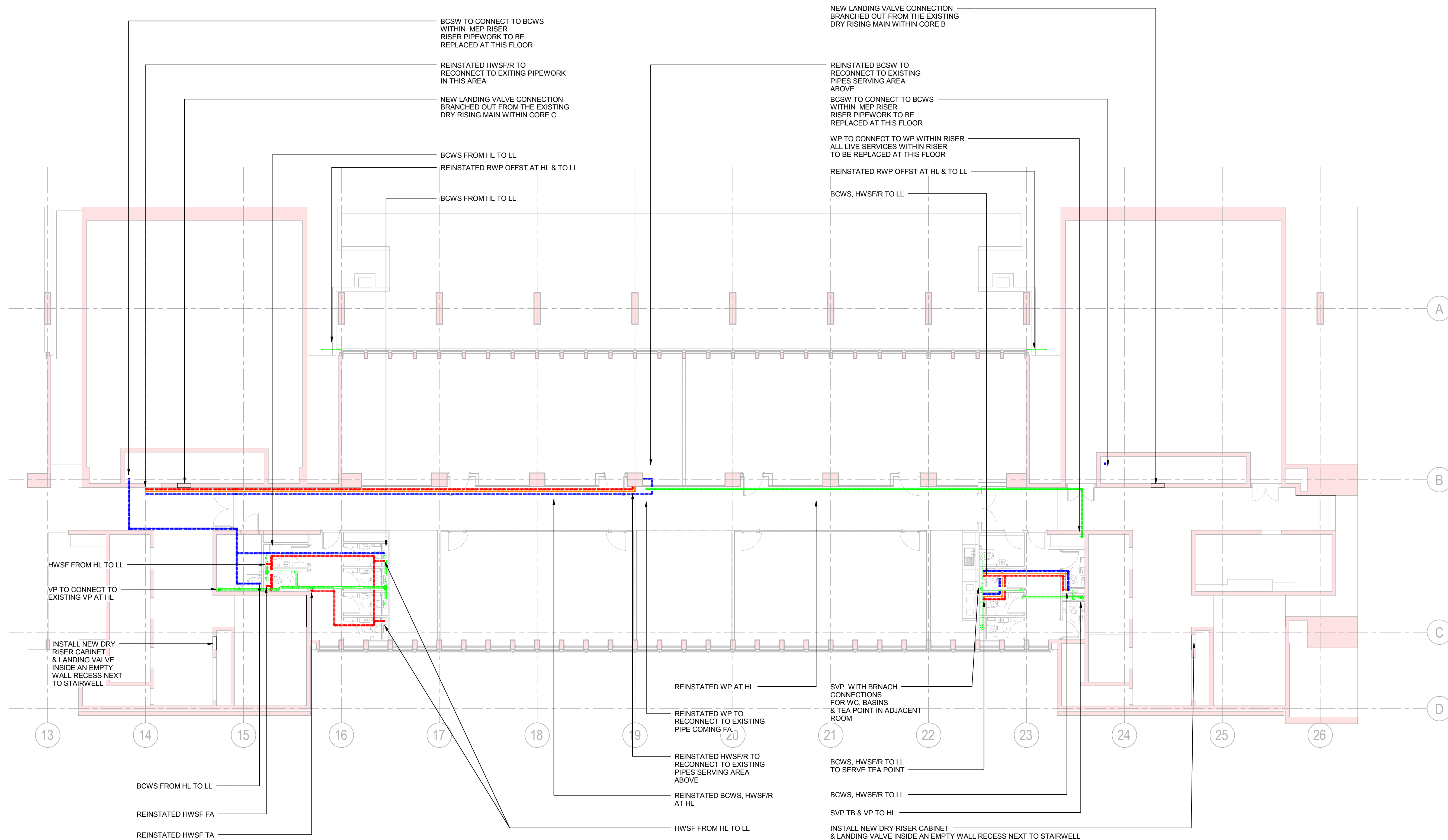
17 Newman Street
 London
 W1T 1PD
 UK

Tel: +44 (0)2079 279 700
 Fax: +44 (0)207 874 145
 Email: 035833@burohappold.com
 Web: www.burohappold.com

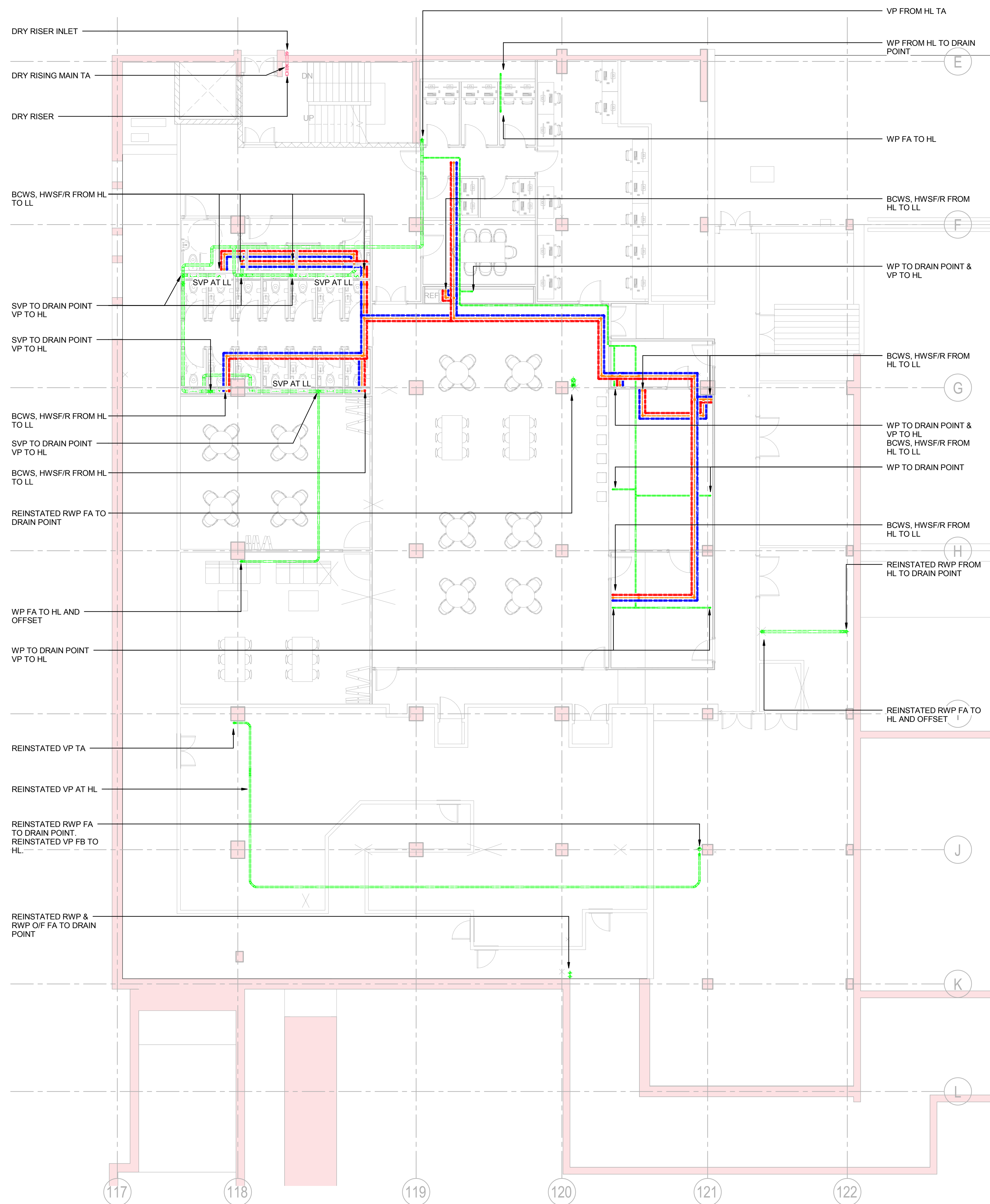
Architect: *HawkinsBrown*
 Project: **UCL Institute of Education**
 Dwg Title: **Public Health Services
 Services Water and Drainage Services
 Level 3 ISD**

Job No: **035833**
 Scale@A1: **1 : 100**

Drawing No: **20BW-BHE-S2-03-DR-P-XX-8000**
 Revision: **P01**



1 Public Health Services Water and Drainage Services - Level 3 ISD



1 Public Health Services Water and Drainage Services - Level 2 Wing A

© Buro Happold Limited or its group companies. All rights reserved. Buro Happold and its group companies accept (unless otherwise agreed in writing) their rights under a 77 to 81 of the Copyright, Designs and Patents Act 1988.

DO NOT SCALE THIS DRAWING.

SAFETY HEALTH AND ENVIRONMENTAL INFORMATION

IN ADDITION TO THE HAZARDS/RISKS NORMALLY ASSOCIATED WITH THE TYPES OF WORK DETAILED ON THIS DRAWING, NOTE THE FOLLOWING:

CONSTRUCTION

- WORKING AT HEIGHT
- LIFTING HEAVY EQUIPMENT
- WORKING ADJACENT TO POTENTIALLY LIVE SERVICES
- HANDLING CHEMICAL PRODUCTS
- WORKING IN CONFINED SPACES
- PRESENCE OF ASBESTOS

MAINTENANCE/LEANING/OPERATION

- HANDLING CHEMICAL PRODUCTS
- WORKING AT HEIGHT
- WORKING ADJACENT TO POTENTIALLY LIVE SERVICES

DECOMMISSIONING/DEMOLITION

- PRESENCE OF LIVE SERVICES
- PRESENCE OF ASBESTOS
- WORKING AT HEIGHT
- LIFTING HEAVY EQUIPMENT
- PRESENCE OF FLOOR OPENINGS
- ALWAYS SAFELY ISOLATE BEFORE COMMENCING ANY WORKS

Notes

STANDARD NOTES

- THIS DRAWING IS TO BE READ IN CONJUNCTION WITH ALL OTHER DISCIPLINES, DRAWINGS, SCHEDULES AND SPECIFICATIONS, LEGENDS AND STANDARD DETAILS.
- THIS DRAWING IS COPYRIGHT AND SHALL NOT BE REPRODUCED WITHOUT PERMISSION.
- DIMENSIONS GOVERN ON ALL DRAWINGS AND DETAILS. SHOULD ANY DISCREPANCIES BE FOUND WITH THIS DRAWING AND ANY ASSOCIATED DRAWINGS OR SPECIFICATIONS THIS SHOULD BE BROUGHT TO THE ATTENTION OF THE M&E BUILDING SERVICES CONSULTANT IMMEDIATELY.
- UNLESS OTHERWISE STATED ALL DIMENSIONS ARE IN MILLIMETRES.
- DO NOT SCALE FROM THIS DRAWING.
- DIMENSIONS TO BE CHECKED ON SITE BEFORE ANY WORK IS PUT IN HAND OR PREFABRICATED.
- THIS DRAWING SHOULD ONLY BE USED FOR THE SPECIFIC SERVICES INTENDED.
- THIS DRAWING SHOWS THE DESIGN INTENT ONLY. THE CONTRACTOR SHALL BE RESPONSIBLE FOR THE FULL CO-ORDINATION OF THE SERVICES INDICATED ON THIS AND ALL OTHER SERVICES DRAWINGS.
- FINAL ACCESS AND SETTING OUT OF SERVICES SHALL BE AGREED BETWEEN THE ARCHITECT AND THE CONTRACTOR.
- THE PROJECT NOTES ARE TO BE READ IN CONJUNCTION WITH ALL RELEVANT TECHNICAL SPECIFICATIONS.
- WHERE PUBLIC HEALTH SERVICES PASS THROUGH FIRE COMPARTMENTATION CEILING VOIDS, FLOOR VOIDS AND STRUCTURAL WALLS THE CONTRACTOR SHALL SLEEVE/SEAL THE OPENING WITH AN ACOUSTIC AND FIRE SEALANT APPROVED BY THE ARCHITECT.
- THE CONTRACTOR SHALL REFER TO THE ARCHITECT'S DRAWINGS FOR DETAILS OF FIRE COMPARTMENTATION.
- STEEL/STAINLESS STEEL AND IRON PIPEWORK ARE DENOTED BY THEIR INTERNAL BORE SIZE.
- COPPER AND PLASTIC PIPEWORK ARE DENOTED BY THEIR EXTERNAL DIAMETER.
- DRAWING HAS BEEN PRODUCED FROM INCOMPLETE RECORD INFORMATION AND VISUAL SITE SURVEYS. CONTRACTOR IS RESPONSIBLE FOR VALIDATING ACCURACY PRIOR TO WORKS.
- CONTRACTOR TO PROVIDE SCHEDULE OF PROPOSED SERVICES ISOLATIONS PRIOR TO WORK COMMENCING.
- DRAWINGS ARE INDICATIVE ONLY AND ARE SHOWN FOR THE DESIGN INTENT AND THE DESIGN & BUILD CONTRACTOR'S PRICING PURPOSE. THE CONTRACTOR SHALL VERIFY ALL ASPECTS OF THE DESIGN DURING HIS DESIGN PHASE.

P01	TENDER	11/04/2017	LH
Rev	Description	Date	Approved

TENDER

Statut/Suitability of Drawing

BUROHAPPOLD
ENGINEERING

17 Newman Street
London
W1T 1PD
UK

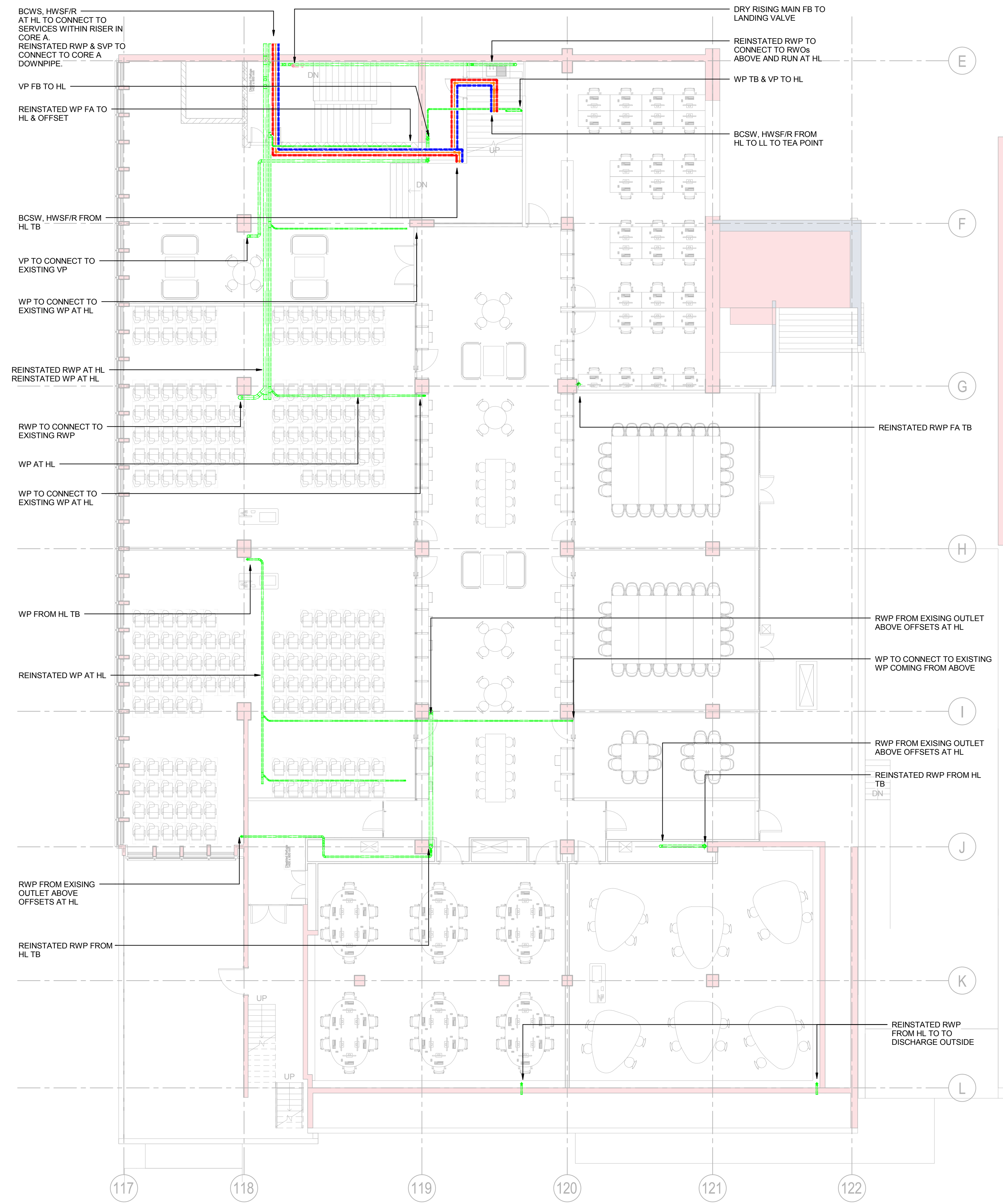
Tel: +44 (0)2079 279 700
Fax: +44 (0)207 874 145
Email: 035833@burohappold.com
Web: www.burohappold.com

Architect: *HawkinsBrown*

Project: **UCL Institute of Education**

Disc Title: **Public Health Services
Services Water and Drainage Services
Level 2 Wing A**

Job No. 035833	Scale@A1 1 : 100
Drawing No. 20BW-BHE-WA-02-DR-P-XX-8000	Revision P01



1 Public Health Services Water and Drainage Services - Level 3 Wing A

© Buro Happold Limited or its group companies.
 All Rights Reserved. Buro Happold and its group companies assert (unless otherwise agreed in writing) their rights under a 77 to 88 of the Copyright, Designs and Patents Act 1988.

DO NOT SCALE THIS DRAWING.

SAFETY HEALTH AND ENVIRONMENTAL INFORMATION

IN ADDITION TO THE HAZARDS/RISKS NORMALLY ASSOCIATED WITH THE TYPES OF WORK DETAILED ON THIS DRAWING, NOTE THE FOLLOWING:

CONSTRUCTION

- WORKING AT HEIGHT
- LIFTING HEAVY EQUIPMENT
- WORKING ADJACENT TO POTENTIALLY LIVE SERVICES
- HANDLING CHEMICAL PRODUCTS
- WORKING IN CONFINED SPACES
- PRESENCE OF ASBESTOS

MAINTENANCE/LEANING/OPERATION

- HANDLING CHEMICAL PRODUCTS
- WORKING AT HEIGHT
- WORKING ADJACENT TO POTENTIALLY LIVE SERVICES

DECOMMISSIONING/DEMOLITION

- PRESENCE OF LIVE SERVICES
- PRESENCE OF ASBESTOS
- WORKING AT HEIGHT
- LIFTING HEAVY EQUIPMENT
- PRESENCE OF FLOOR OPENINGS
- ALWAYS SAFELY ISOLATE BEFORE COMMENCING ANY WORKS

- Notes**
- STANDARD NOTES**
- THIS DRAWING IS TO BE READ IN CONJUNCTION WITH ALL OTHER DISCIPLINES, DRAWINGS, SCHEDULES AND SPECIFICATIONS, LEGENDS AND STANDARD DETAILS.
 - THIS DRAWING IS COPYRIGHT AND SHALL NOT BE REPRODUCED WITHOUT PERMISSION.
 - DIMENSIONS GOVERN ON ALL DRAWINGS AND DETAILS. SHOULD ANY DISCREPANCIES BE FOUND WITH THIS DRAWING AND ANY ASSOCIATED DRAWINGS OR SPECIFICATIONS THIS SHOULD BE BROUGHT TO THE ATTENTION OF THE M&E BUILDING SERVICES CONSULTANT IMMEDIATELY.
 - UNLESS OTHERWISE STATED ALL DIMENSIONS ARE IN MILLIMETRES.
 - DO NOT SCALE FROM THIS DRAWING.
 - DIMENSIONS TO BE CHECKED ON SITE BEFORE ANY WORK IS PUT IN HAND OR PREFABRICATED.
 - THIS DRAWING SHOULD ONLY BE USED FOR THE SPECIFIC SERVICES INTENDED.
 - THIS DRAWING SHOWS THE DESIGN INTENT ONLY. THE CONTRACTOR SHALL BE RESPONSIBLE FOR THE FULL CO-ORDINATION OF THE SERVICES INDICATED ON THIS AND ALL OTHER SERVICES DRAWINGS.
 - FINAL ACCESS AND SETTING OUT OF SERVICES SHALL BE AGREED BETWEEN THE ARCHITECT AND THE CONTRACTOR. THE PROJECT NOTES ARE TO BE READ IN CONJUNCTION WITH ALL RELEVANT TECHNICAL SPECIFICATIONS.
 - WHERE PUBLIC HEALTH SERVICES PASS THROUGH FIRE COMPARTMENTATION CEILING VOIDS, FLOOR VOIDS AND STRUCTURAL WALLS THE CONTRACTOR SHALL SLEEVE/SEAL THE OPENING WITH AN ACOUSTIC AND FIRE SEALANT APPROVED BY THE ARCHITECT.
 - THE CONTRACTOR SHALL REFER TO THE ARCHITECT'S DRAWINGS FOR DETAILS OF FIRE COMPARTMENTATION.
 - STEEL/STAINLESS STEEL AND IRON PIPEWORK ARE DENOTED BY THEIR INTERNAL BORE SIZE.
 - COPPER AND PLASTIC PIPEWORK ARE DENOTED BY THEIR EXTERNAL DIAMETER.
 - DRAWING HAS BEEN PRODUCED FROM INCOMPLETE RECORD INFORMATION AND VISUAL SITE SURVEYS. CONTRACTOR IS RESPONSIBLE FOR VALIDATING ACCURACY PRIOR TO WORKS.
 - CONTRACTOR TO PROVIDE SCHEDULE OF PROPOSED SERVICES ISOLATIONS PRIOR TO WORK COMMENCING.
 - DRAWINGS ARE INDICATIVE ONLY AND ARE SHOWN FOR THE DESIGN INTENT AND THE DESIGN & BUILD CONTRACTOR'S PRICING PURPOSE. THE CONTRACTOR SHALL VERIFY ALL ASPECTS OF THE DESIGN DURING HIS DESIGN PHASE.

P01	TENDER	11/04/2017	LH
Rev	Description	Date	Approved

TENDER

Status/Suitability of Drawing

BUROHAPPOLD ENGINEERING

17 Newman Street
 London
 W1T 1PD
 UK

Tel: +44 (0)2079 279 700
 Fax: +44 (0)207 874 145
 Email: 035833@burohappold.com
 Web: www.burohappold.com

Architect: *HawkinsBrown*
 Project: **UCL Institute of Education**
 Dwg Title: **Public Health Services Services Water and Drainage Services Level 3 Wing A**

Job No:	Scale:
035833	1 : 100
Drawing No:	Revision
20BW-BHE-WA-03-DR-P-XX-8000	P01

DO NOT SCALE THIS DRAWING.

SAFETY HEALTH AND ENVIRONMENTAL INFORMATION

IN ADDITION TO THE HAZARDS/RISKS NORMALLY ASSOCIATED WITH THE TYPES OF WORK DETAILED ON THIS DRAWING, NOTE THE FOLLOWING:

- CONSTRUCTION**
- WORKING AT HEIGHT
 - LIFTING HEAVY EQUIPMENT
 - WORKING ADJACENT TO POTENTIALLY LIVE SERVICES
 - HANDLING CHEMICAL PRODUCTS
 - WORKING IN CONFINED SPACES
 - PRESENCE OF ASBESTOS

- MAINTENANCE/CLEANING/OPERATION**
- HANDLING CHEMICAL PRODUCTS
 - WORKING AT HEIGHT
 - WORKING ADJACENT TO POTENTIALLY LIVE SERVICES

- DECOMMISSIONING/DEMOLITION**
- PRESENCE OF LIVE SERVICES
 - PRESENCE OF ASBESTOS
 - WORKING AT HEIGHT
 - LIFTING HEAVY EQUIPMENT
 - PRESENCE OF FLOOR OPENINGS
 - ALWAYS SAFELY ISOLATE BEFORE COMMENCING ANY WORKS

Notes

STANDARD NOTES

- THIS DRAWING IS TO BE READ IN CONJUNCTION WITH ALL OTHER DISCIPLINES, DRAWINGS, SCHEDULES AND SPECIFICATIONS, LEGENDS AND STANDARD DETAILS.
- THIS DRAWING IS COPYRIGHT AND SHALL NOT BE REPRODUCED WITHOUT PERMISSION.
- DIMENSIONS GOVERN ON ALL DRAWINGS AND DETAILS. SHOULD ANY DISCREPANCIES BE FOUND WITH THIS DRAWING AND ANY ASSOCIATED DRAWINGS OR SPECIFICATIONS THIS SHOULD BE BROUGHT TO THE ATTENTION OF THE M&E BUILDING SERVICES CONSULTANT IMMEDIATELY.
- UNLESS OTHERWISE STATED ALL DIMENSIONS ARE IN MILLIMETRES.
- DO NOT SCALE FROM THIS DRAWING.
- DIMENSIONS TO BE CHECKED ON SITE BEFORE ANY WORK IS PUT IN HAND OR PREFABRICATED.
- THIS DRAWING SHOULD ONLY BE USED FOR THE SPECIFIC SERVICES INTENDED.
- THIS DRAWING SHOWS THE DESIGN INTENT ONLY. THE CONTRACTOR SHALL BE RESPONSIBLE FOR THE FULL CO-ORDINATION OF THE SERVICES INDICATED ON THIS AND ALL OTHER SERVICES DRAWINGS.
- FINAL ACCESS AND SETTING OUT OF SERVICES SHALL BE AGREED BETWEEN THE ARCHITECT AND THE CONTRACTOR.
- THE PROJECT NOTES ARE TO BE READ IN CONJUNCTION WITH ALL RELEVANT TECHNICAL SPECIFICATIONS.
- WHERE ELECTRICAL SERVICES PASS THROUGH FIRE COMPARTMENTATION CEILING VOIDS, FLOOR VOIDS AND STRUCTURAL WALLS THE CONTRACTOR SHALL SLEEVE/SEAL THE OPENING WITH AN ACOUSTIC AND FIRE SEALANT APPROVED BY THE ARCHITECT.
- THE CONTRACTOR SHALL REFER TO THE ARCHITECT'S DRAWINGS FOR DETAILS OF FIRE COMPARTMENTATION RECORD INFORMATION AND VISUAL SITE SURVEYS.
- CONTRACTOR IS RESPONSIBLE FOR VALIDATING ACCURACY PRIOR TO WORKS.
- CONTRACTOR TO PROVIDE SCHEDULE OF PROPOSED SERVICES ISOLATIONS PRIOR TO WORK COMMENCING.
- DRAWINGS ARE INDICATIVE ONLY AND ARE SHOWN FOR THE DESIGN INTENT AND THE DESIGN & BUILD CONTRACTOR'S PRICING PURPOSE. THE CONTRACTOR SHALL VERIFY ALL ASPECTS OF THE DESIGN DURING HIS DESIGN PHASE.

P01	TENDER	11/04/2017	LH
Rev	Description	Date	Approved

Status/Suitability of Drawing

TENDER

BUROHAPPOLD ENGINEERING

17 Newman Street
 London W1T 1PD
 UK

Tel: +44 (0)2079 279 700
 Fax: +44 (0)207 874 145
 Email: 035833@burohappold.com
 Web: www.burohappold.com

Architect: *HawkinsBrown*
 Project: **UCL Institute of Education**
 Dwg Title: **Public Health Services Symbols Legend**

Job No. 035833	Scale@A1 1 : 1
Drawing No. 20BW-BHE-WA-XX-DR-P-XX-5000	Revision P01

PIPE VALVES

	ISOLATING VALVE (OPEN)
	ISOLATING VALVE (CLOSE)
	GATE VALVE
	WHEEL VALVE
	NON RETURN (CHECK) VALVE
	DOUBLE NON RETURN (CHECK) VALVE
	PRESSURE REDUCING VALVE
	TERMOSTATIC BALANCING VALVE
	REGULATING VALVE
	DOUBLE REGULATING VALVE
	COMMISSIONING SET
	SAFETY VALVE
	ANGLE SAFETY VALVE
	LOCABLE VALVE (NORMALLY CLOSED)
	LOCABLE VALVE (NORMALLY OPEN)
	BALL VALVE
	DIFFERENTIAL PRESSURE CONTROL VALVE
	DRAIN COCK
	STAINER CIU
	TERMOSTATIC RADIATOR ANGLE VALVE
	TERMOSTATIC RADIATOR STRAIGHT VALVE
	AUTOMATIC AIR VENT
	AIR VENT
	2 PORT MOTORISED VALVE
	2 PORT SOLENOID VALVE
	3 PORT MOTORISED VALVE (REGULATING)
	3 PORT MOTORISED VALVE (DIVERTING)
	PRESSURE INDEPENDENT CONTROL VALVE
	4 PORT MOTORISED VALVE
	FILL POINT
	GLOBE VALVE
	DRY RISER LANDING VALVE
	DRY RISER BREECHING INLET

DOMESTIC WATER OUTLETS

	WATER OUTLET
	SANITARY OUTLET
	MIXING TAP
	SHOWER TAP

NOTATION

0 l/s	0 Pa/m	PIPEWORK SIZING NOTATION
0 m/s	0 mm	
0 m.c.u/s	0 Pa/m	DUCTWORK SIZING NOTATION
0 m/s	0 mm	

PIPE INSTRUMENTS

	PRESSURE GAUGE
	TEMPERATURE GAUGE
	CONTENTS GAUGE
	DIFFERENTIAL GAUGE
	HUMIDITY SWITCH
	PRESSURE SWITCH
	TEMPERATURE SWITCH
	FLOW SWITCH
	TEMPERATURE SENSOR
	PRESSURE SENSOR
	FLOW SENSOR
	HUMIDITY SENSOR
	THERMOMETER
	PRESSURE TAPPING
	GAS METER
	HEAT METER
	WATER METER
	DIFFERENTIAL PRESSURE SENSOR
	INTERFACE WITH EMON (ENERGY MONITORING SYSTEM)
	MOVEMENT DETECTION

PIPE ACCESSORIES

	FLOW ARROW
	GRADIENT ARROW (FALL)
	PIPE TO OR FROM ABOVE
	PIPE TO OR FROM BELOW
	PIPE CONNECTION BELOW
	PIPE TURNS DOWN
	PIPE TURNS UP/PIPE CONNECTION
	ANCHOR POINT
	BLANK END
	PIPE BREAK - SINGLE LINE
	PIPE BREAK - DOUBLE LINE
	TUNDISH - PLAN
	TRAPPED TUNDISH - PLAN
	TUNDISH - ELEVATION
	TRAPPED TUNDISH - ELEVATION
	BIB TAP
	HOSE UNION BIB TAP
	OPEN VENT
	EXPANSION BELLOWS
	ANTI-VIBRATION COUPLING
	TEST POINT
	DOSING POT
	EXPANSION VESSEL

PIPE ACCESSORIES

	FLOW ARROW
	GRADIENT ARROW (FALL)
	PIPE TO OR FROM ABOVE
	PIPE TO OR FROM BELOW
	PIPE CONNECTION BELOW
	PIPE TURNS DOWN
	PIPE TURNS UP/PIPE CONNECTION
	ANCHOR POINT
	BLANK END
	PIPE BREAK - SINGLE LINE
	PIPE BREAK - DOUBLE LINE
	TUNDISH - PLAN
	TRAPPED TUNDISH - PLAN
	TUNDISH - ELEVATION
	TRAPPED TUNDISH - ELEVATION
	BIB TAP
	HOSE UNION BIB TAP
	OPEN VENT
	EXPANSION BELLOWS
	ANTI-VIBRATION COUPLING
	TEST POINT
	DOSING POT
	EXPANSION VESSEL

SANITARY APPLIANCES

	WC
	HAND BASIN
	WATER DISPENSER (BOILING AND CHILLED)
	SINK
	DISHWASHER

PIPEWORK TEES

	45° BRANCH
	45° CROSS
	BOSS CONNECTION
	CROSS TEE
	DOUBLE LONG RADIUS BRANCH

PIPEWORK CLEANOUT

	ACCESS POINT FITTING
	RODDING EYE IN RISER
	RODDING EYE TO FALL
	UPRIGHT RODDING EYE

CONNECTIONS

	FLANGED UNION
	FLEX CONNECTION
	WELD NECK FLANGE
	THREADED FLANGE
	SCREWED UNION

PIPE CONNECTION

	OVERSHOOT
	CONNECTION

PIPEWORK REDUCERS

	CONCENTRIC REDUCER
	ECCENTRIC REDUCER

HVAC PARTS

	CAP END
--	---------

SAFETY HEALTH AND ENVIRONMENTAL INFORMATION

IN ADDITION TO THE HAZARDS/RISKS NORMALLY ASSOCIATED WITH THE TYPES OF WORK DETAILED ON THIS DRAWING, NOTE THE FOLLOWING:

- CONSTRUCTION**
1. WORKING AT HEIGHT
 2. LIFTING HEAVY EQUIPMENT
 3. WORKING ADJACENT TO POTENTIALLY LIVE SERVICES
 4. HANDLING CHEMICAL PRODUCTS
 5. WORKING IN CONFINED SPACES
 6. PRESENCE OF ASBESTOS

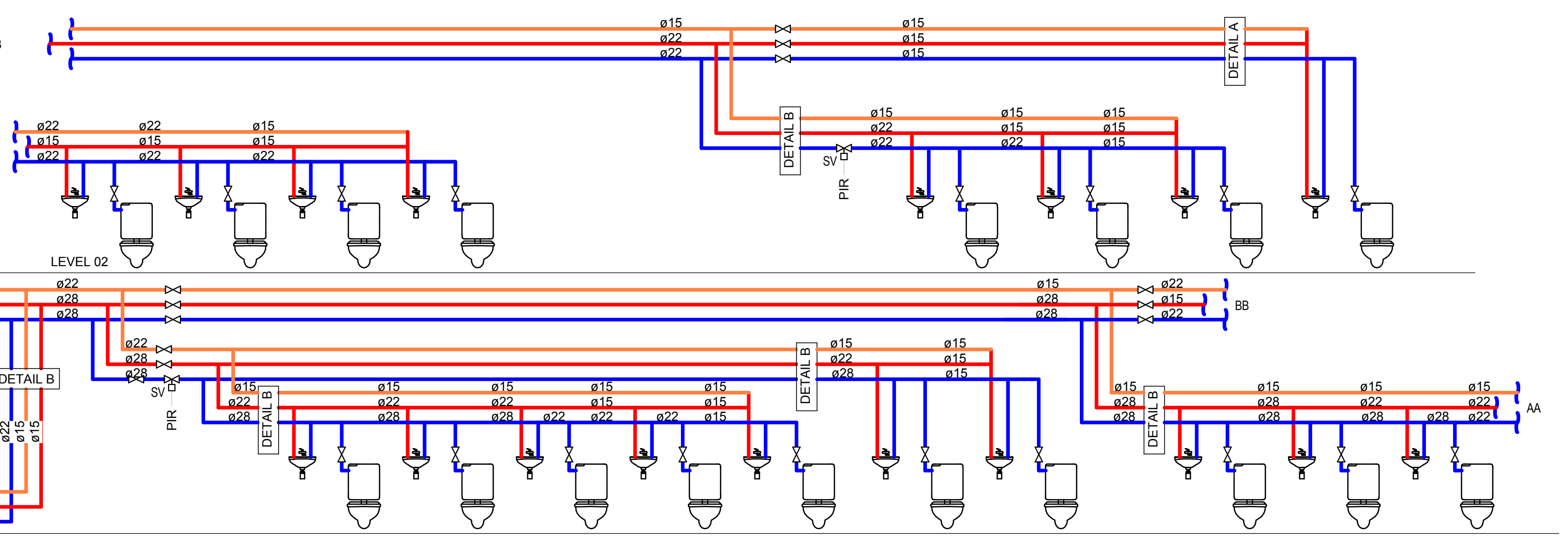
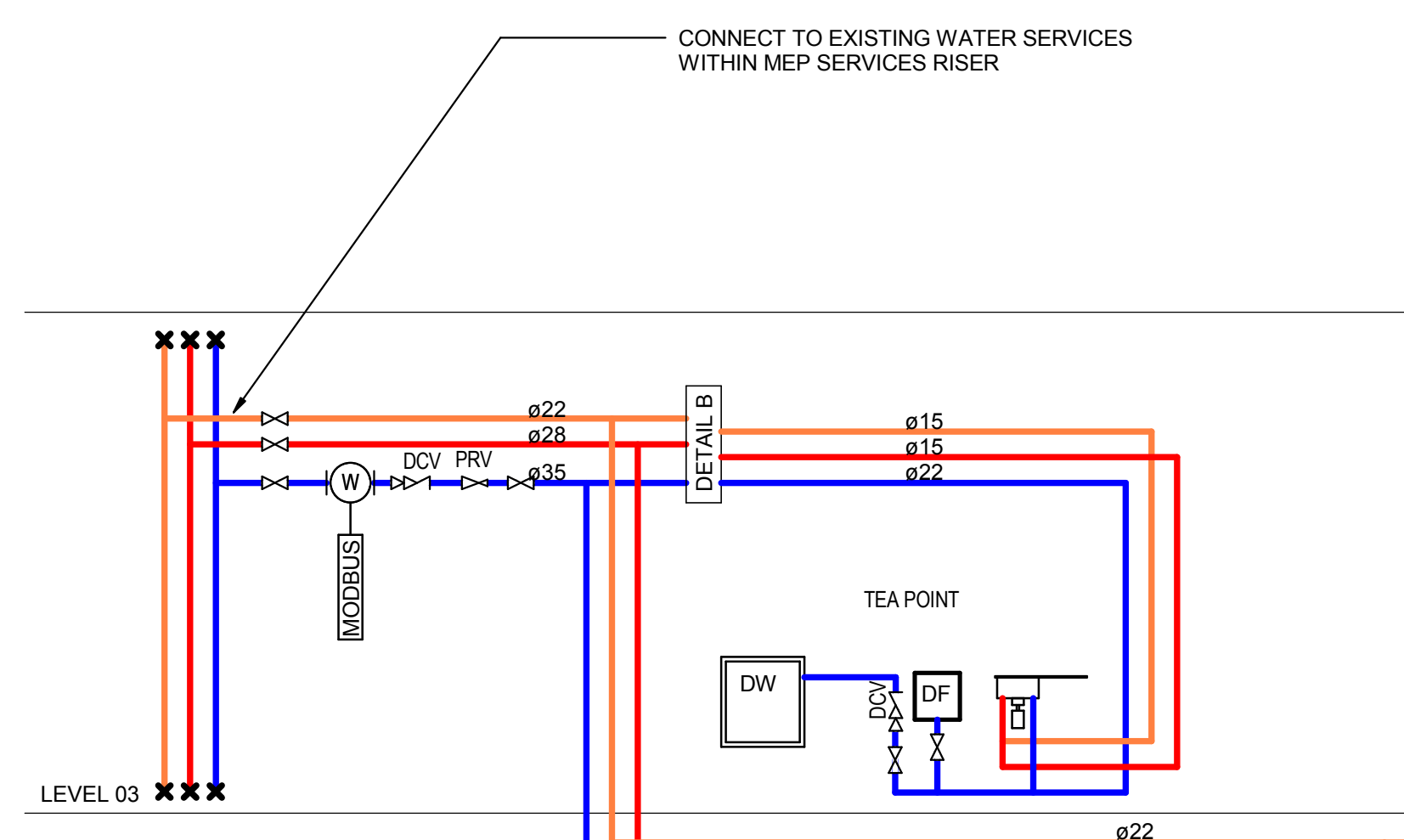
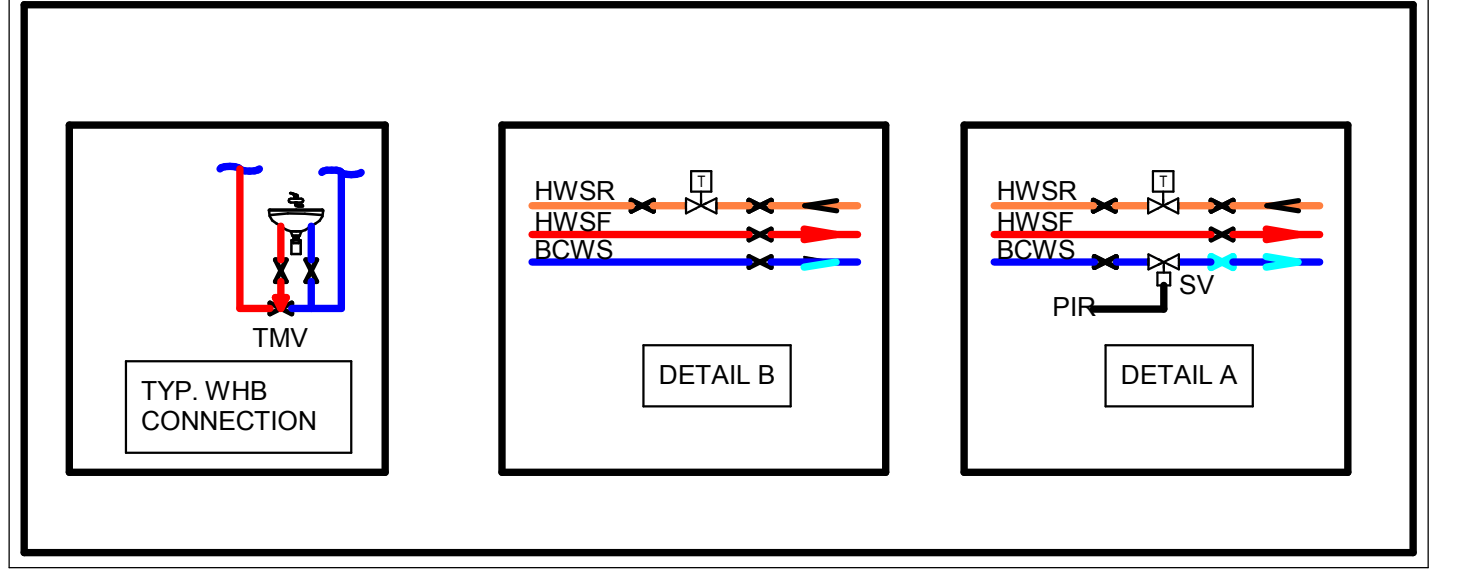
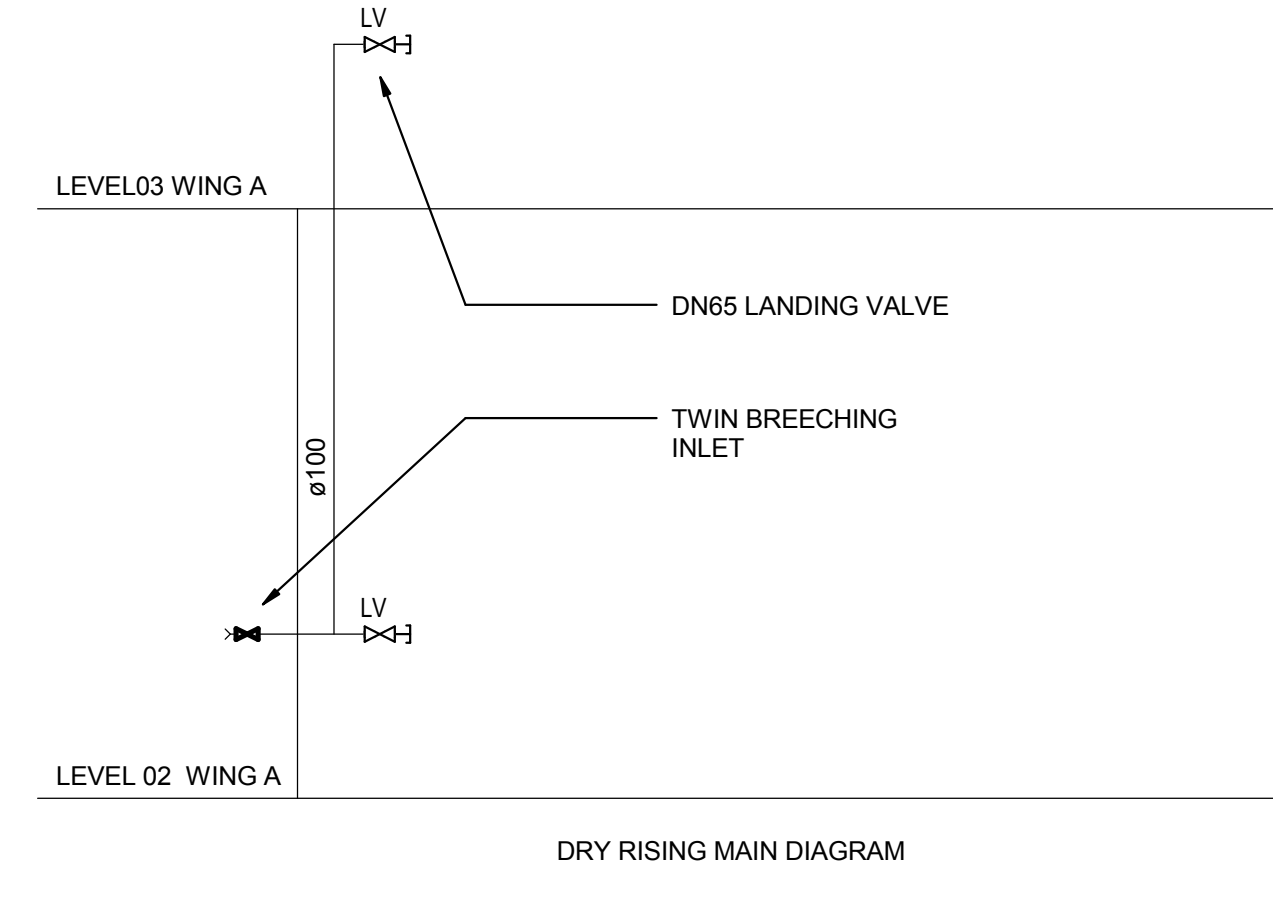
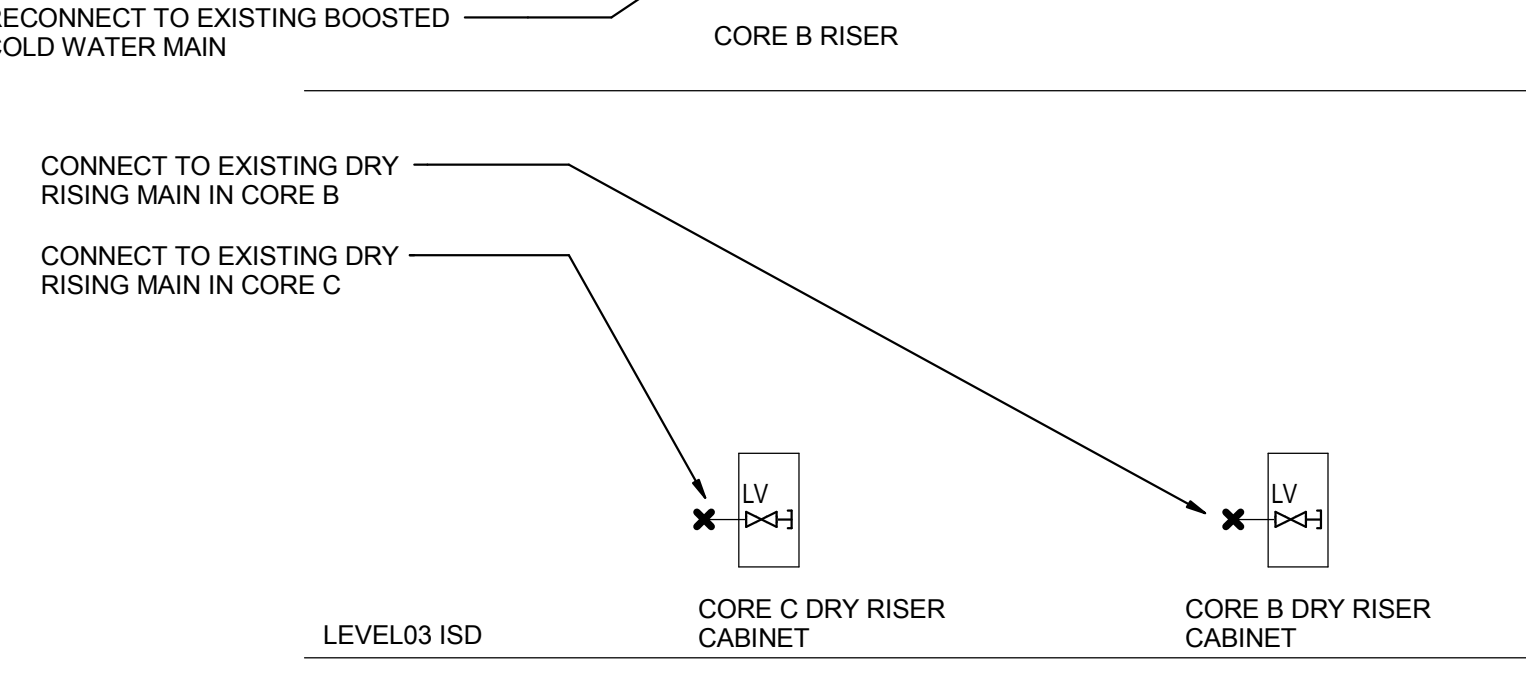
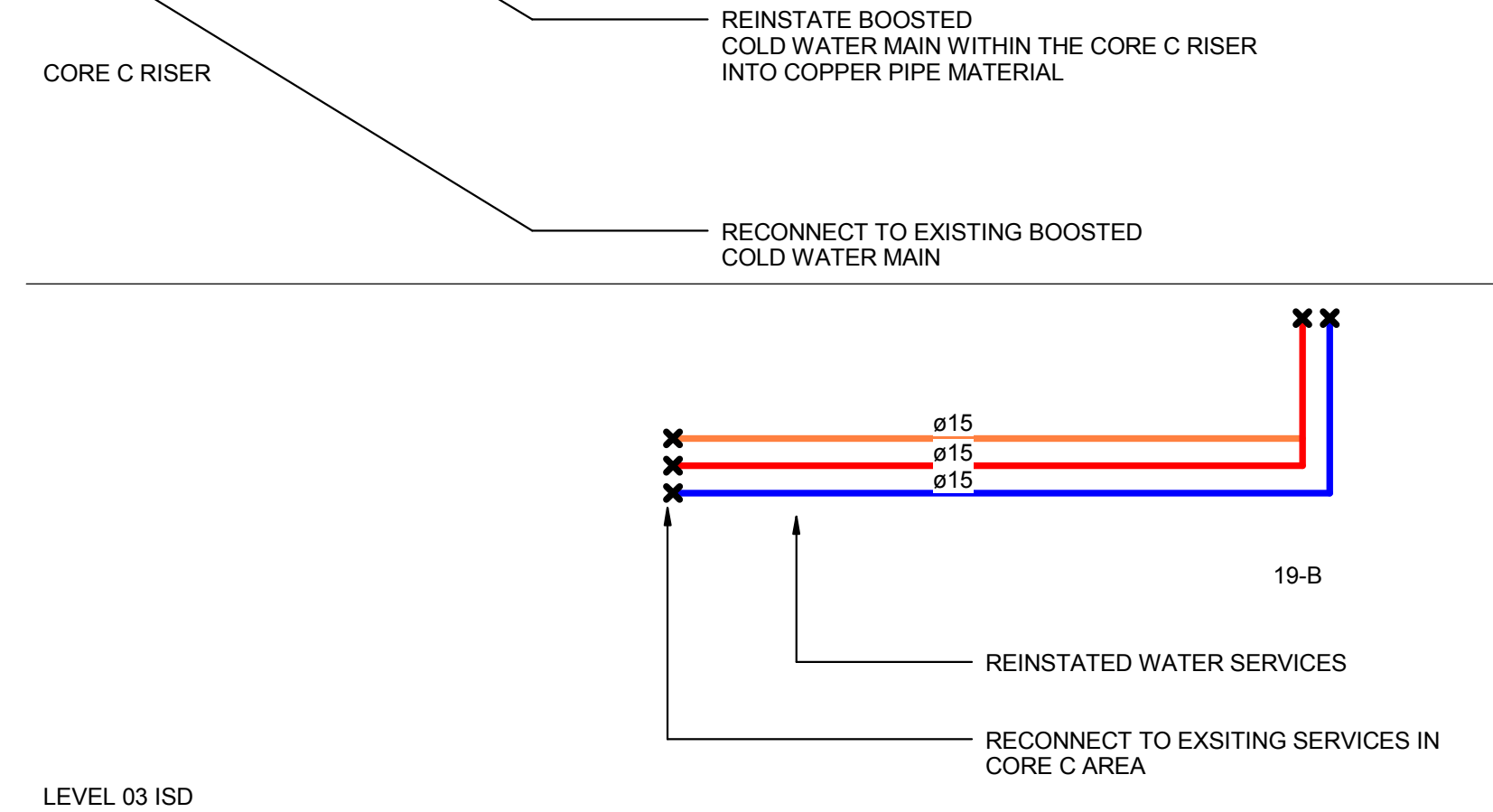
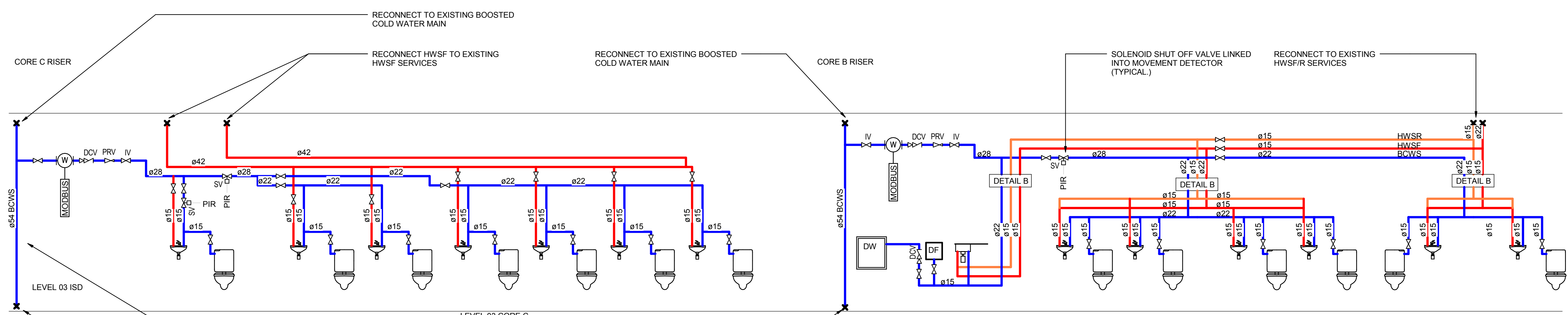
- MAINTENANCE/CLEANING/OPERATION**
1. HANDLING CHEMICAL PRODUCTS
 2. WORKING AT HEIGHT
 3. WORKING ADJACENT TO POTENTIALLY LIVE SERVICES

- DECOMMISSIONING/DEMOLITION**
1. PRESENCE OF LIVE SERVICES
 2. PRESENCE OF ASBESTOS
 3. WORKING AT HEIGHT
 4. LIFTING HEAVY EQUIPMENT
 5. PRESENCE OF FLOOR OPENINGS
 6. ALWAYS SAFELY ISOLATE BEFORE COMMENCING ANY WORKS

Notes

SCHEMATIC NOTES

1. THIS DRAWING IS TO BE READ IN CONJUNCTION WITH ALL OTHER DISCIPLINES, DRAWINGS, SCHEDULES AND SPECIFICATIONS, LEGENDS AND STANDARD DETAILS.
2. THIS DRAWING IS COPYRIGHT AND SHALL NOT BE REPRODUCED WITHOUT PERMISSION.
3. DIMENSIONS GOVERN ON ALL DRAWINGS AND DETAILS. SHOULD ANY DISCREPANCIES BE FOUND WITH THIS DRAWING AND ANY ASSOCIATED DRAWINGS OR SPECIFICATIONS THIS SHOULD BE BROUGHT TO THE ATTENTION OF THE M&E BUILDING SERVICES CONSULTANT IMMEDIATELY.
4. UNLESS OTHERWISE STATED ALL DIMENSIONS ARE IN MILLIMETRES.
5. DO NOT SCALE FROM THIS DRAWING.
6. DIMENSIONS TO BE CHECKED ON SITE BEFORE ANY WORK IS PUT IN HAND OR PREFABRICATED.
7. THIS DRAWING SHOULD ONLY BE USED FOR THE SPECIFIC SERVICES INTENDED.
8. THIS DRAWING SHOWS THE DESIGN INTENT ONLY. THE CONTRACTOR SHALL BE RESPONSIBLE FOR THE FULL CO-ORDINATION OF THE SERVICES INDICATED ON THIS AND ALL OTHER SERVICES DRAWINGS.
9. FINAL ACCESS AND SETTING OUT OF SERVICES SHALL BE AGREED BETWEEN THE ARCHITECT AND THE CONTRACTOR.
10. THE PROJECT NOTES ARE TO BE READ IN CONJUNCTION WITH ALL RELEVANT TECHNICAL SPECIFICATIONS.
11. WHERE ELECTRICAL SERVICES PASS THROUGH FIRE COMPARTMENTATION CEILING VOIDS, FLOOR VOIDS AND STRUCTURAL WALLS THE CONTRACTOR SHALL SLEEVE/SEAL THE OPENING WITH AN ACOUSTIC AND FIRE SEALANT APPROVED BY THE ARCHITECT.
12. THE CONTRACTOR SHALL REFER TO THE ARCHITECT'S DRAWINGS FOR DETAILS OF FIRE COMPARTMENTATION.
13. DRAWING HAS BEEN PRODUCED FROM INCOMPLETE RECORD INFORMATION AND VISUAL SITE SURVEYS. CONTRACTOR IS RESPONSIBLE FOR VALIDATING ACCURACY PRIOR TO WORKS.
14. CONTRACTOR TO PROVIDE SCHEDULE OF PROPOSED SERVICES ISOLATIONS PRIOR TO WORK COMMENCING.
15. DRAWINGS ARE INDICATIVE ONLY AND ARE SHOWN FOR THE PRICING PURPOSE. THE CONTRACTOR SHALL VERIFY ALL ASPECTS OF THE DESIGN DURING HIS DESIGN PHASE.



P01	TENDER	11/04/2017	LH
Rev	Description	Date	Approved

TENDER

Status/Stability of Drawing

BUROHAPPOLD ENGINEERING

17 Newman Street
 London
 W1T 1PD
 UK

Tel: +44 (0)2079 279 700
 Fax: +44 (0)207 874 145
 Email: 03583@burohappold.com
 Web: www.burohappold.com

Architect: *HawkinsBrown*
 Project: **UCL Institute of Education**
 Dwg Title: **Public Health Services Water Services Schematic**

Job No:	Scale@A1
035833	1 : 1
Drawing No:	Revision
20BW-BHE-WA-XX-SC-P-XX-7000	P01

DO NOT SCALE THIS DRAWING.

SAFETY HEALTH AND ENVIRONMENTAL INFORMATION

IN ADDITION TO THE HAZARDS/RISKS NORMALLY ASSOCIATED WITH THE TYPES OF WORK DETAILED ON THIS DRAWING, NOTE THE FOLLOWING:

- CONSTRUCTION**
1. WORKING AT HEIGHT
 2. LIFTING HEAVY EQUIPMENT
 3. WORKING ADJACENT TO POTENTIALLY LIVE SERVICES
 4. HANDLING CHEMICAL PRODUCTS
 5. WORKING IN CONFINED SPACES
 6. PRESENCE OF ASBESTOS

- MAINTENANCE/CLEANING/OPERATION**
1. HANDLING CHEMICAL PRODUCTS
 2. WORKING AT HEIGHT
 3. WORKING ADJACENT TO POTENTIALLY LIVE SERVICES

DECOMMISSIONING/DEMOLITION

1. PRESENCE OF LIVE SERVICES
2. PRESENCE OF ASBESTOS
3. WORKING AT HEIGHT
4. LIFTING HEAVY EQUIPMENT
5. PRESENCE OF FLOOR OPENINGS
6. ALWAYS SAFELY ISOLATE BEFORE COMMENCING ANY WORKS

Notes

SCHEMATIC NOTES

1. THIS DRAWING IS TO BE READ IN CONJUNCTION WITH ALL OTHER DISCIPLINES, DRAWINGS, SCHEDULES AND SPECIFICATIONS, LEGENDS AND STANDARD DETAILS.
2. THIS DRAWING IS COPYRIGHT AND SHALL NOT BE REPRODUCED WITHOUT PERMISSION.
3. DIMENSIONS GOVERN ON ALL DRAWINGS AND DETAILS. SHOULD ANY DISCREPANCIES BE FOUND WITH THIS DRAWING AND ANY ASSOCIATED DRAWINGS OR SPECIFICATIONS THIS SHOULD BE BROUGHT TO THE ATTENTION OF THE M&E BUILDING SERVICES CONSULTANT IMMEDIATELY.
4. UNLESS OTHERWISE STATED ALL DIMENSIONS ARE IN MILLIMETRES.
5. DO NOT SCALE FROM THIS DRAWING.
6. DIMENSIONS TO BE CHECKED ON SITE BEFORE ANY WORK IS PUT IN HAND OR PREFABRICATED.
7. THIS DRAWING SHOULD ONLY BE USED FOR THE SPECIFIC SERVICES INTENDED.
8. THIS DRAWING SHOWS THE DESIGN INTENT ONLY. THE CONTRACTOR SHALL BE RESPONSIBLE FOR THE FULL CO-ORDINATION OF THE SERVICES INDICATED ON THIS AND ALL OTHER SERVICES DRAWINGS.
9. FINAL ACCESS AND SETTING OUT OF SERVICES SHALL BE AGREED BETWEEN THE ARCHITECT AND THE CONTRACTOR. THE PROJECT NOTES ARE TO BE READ IN CONJUNCTION WITH ALL RELEVANT TECHNICAL SPECIFICATIONS.
10. WHERE ELECTRICAL SERVICES PASS THROUGH FIRE COMPARTMENTATION CEILING VOIDS, FLOOR VOIDS AND STRUCTURAL WALLS THE CONTRACTOR SHALL SLEEVE/SEAL THE OPENING WITH AN ACOUSTIC AND FIRE SEALANT APPROVED BY THE ARCHITECT.
11. THE CONTRACTOR SHALL REFER TO THE ARCHITECT'S DRAWINGS FOR DETAILS OF FIRE COMPARTMENTATION.
12. DRAWING HAS BEEN PRODUCED FROM INCOMPLETE RECORD INFORMATION AND VISUAL SITE SURVEYS. CONTRACTOR IS RESPONSIBLE FOR VALIDATING ACCURACY PRIOR TO WORKS.
13. CONTRACTOR TO PROVIDE SCHEDULE OF PROPOSED SERVICES ISOLATIONS PRIOR TO WORK COMMENCING.
14. DRAWINGS ARE INDICATIVE ONLY AND ARE SHOWN FOR THE DESIGN INTENT AND THE DESIGN & BUILD CONTRACTOR'S PRICING PURPOSE. THE CONTRACTOR SHALL VERIFY ALL ASPECTS OF THE DESIGN DURING HIS DESIGN PHASE.

P01	TENDER	11/04/2017	LH
Rev	Description	Date	Approved

TENDER

Status/Stability of Drawing

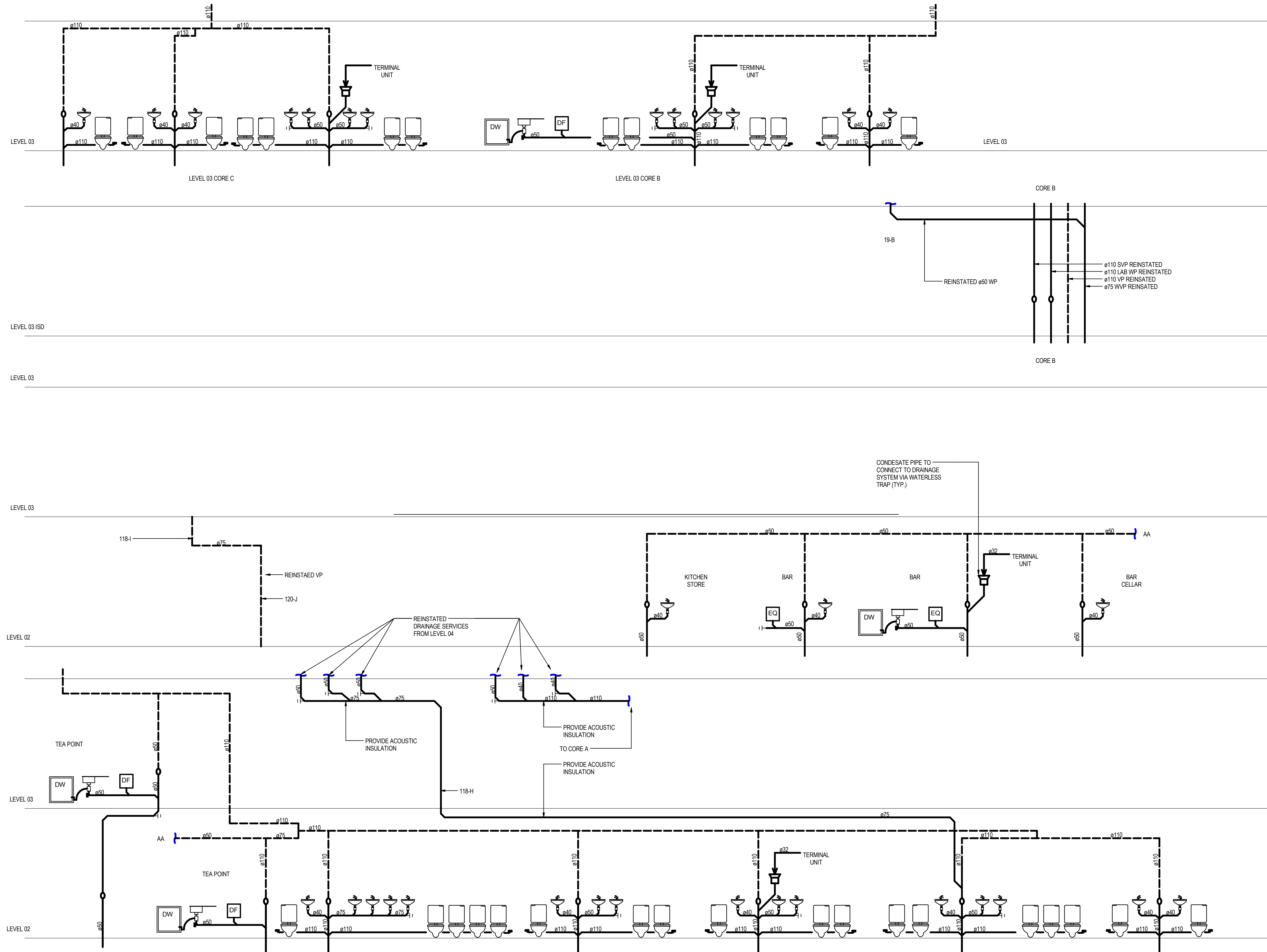
BUROHAPPOLD ENGINEERING

17 Newman Street
 London W1T 1PD
 UK

Tel: +44 (0)2079 279 700
 Fax: +44 (0)207 874 145
 Email: 035833@burohappold.com
 Web: www.burohappold.com

Architect: *HawkinsBrown*
 Project: **UCL Institute of Education**
 Dwg Title: **Public Health Services Drainage Services Schematic**

Job No:	Scale@A1
035833	1 : 1
Drawing No:	Revision
20BW-BHE-WA-XX-SC-P-XX-7001	P01



DO NOT SCALE THIS DRAWING.

SAFETY HEALTH AND ENVIRONMENTAL INFORMATION

IN ADDITION TO THE HAZARDS/RISKS NORMALLY ASSOCIATED WITH THE TYPES OF WORK DETAILED ON THIS DRAWING, NOTE THE FOLLOWING:

- CONSTRUCTION**
1. WORKING AT HEIGHT
 2. LIFTING HEAVY EQUIPMENT
 3. WORKING ADJACENT TO POTENTIALLY LIVE SERVICES
 4. HANDLING CHEMICAL PRODUCTS
 5. WORKING IN CONFINED SPACES
 6. PRESENCE OF ASBESTOS

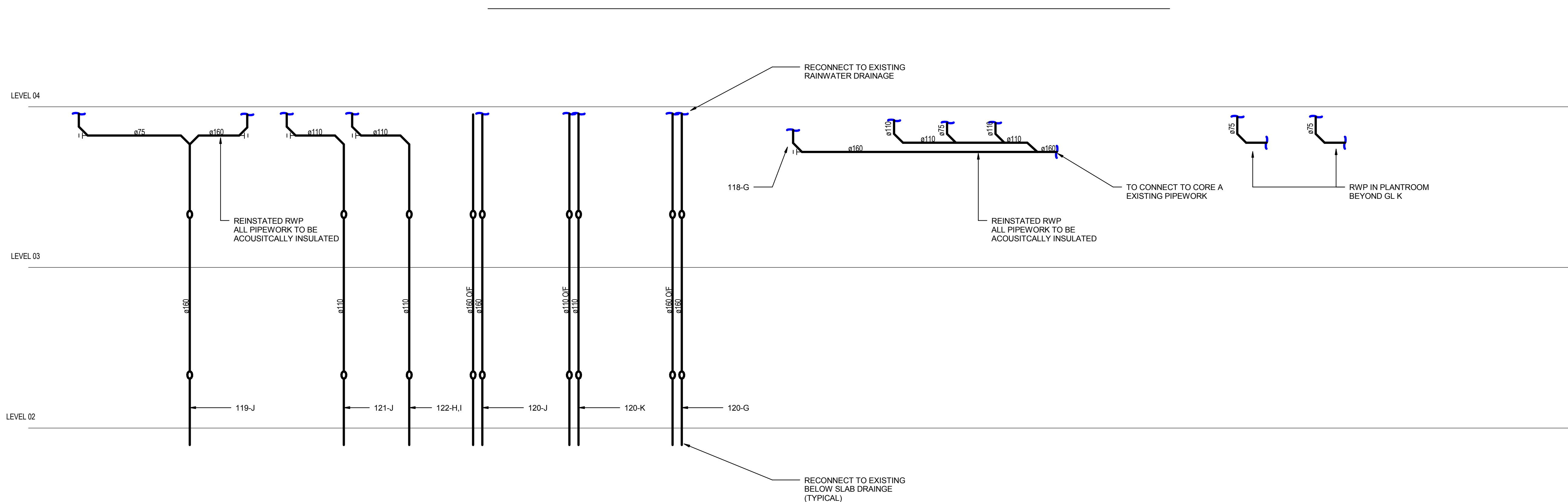
- MAINTENANCE/CLEANING/OPERATION**
1. HANDLING CHEMICAL PRODUCTS
 2. WORKING AT HEIGHT
 3. WORKING ADJACENT TO POTENTIALLY LIVE SERVICES

- DECOMMISSIONING/DEMOLITION**
1. PRESENCE OF LIVE SERVICES
 2. PRESENCE OF ASBESTOS
 3. WORKING AT HEIGHT
 4. LIFTING HEAVY EQUIPMENT
 5. PRESENCE OF FLOOR OPENINGS
 6. ALWAYS SAFELY ISOLATE BEFORE COMMENCING ANY WORKS

Notes

SCHEMATIC NOTES

1. THIS DRAWING IS TO BE READ IN CONJUNCTION WITH ALL OTHER DISCIPLINES, DRAWINGS, SCHEDULES AND SPECIFICATIONS, LEGENDS AND STANDARD DETAILS.
2. THIS DRAWING IS COPYRIGHT AND SHALL NOT BE REPRODUCED WITHOUT PERMISSION.
3. DIMENSIONS GOVERN ON ALL DRAWINGS AND DETAILS. SHOULD ANY DISCREPANCIES BE FOUND WITH THIS DRAWING AND ANY ASSOCIATED DRAWINGS OR SPECIFICATIONS THIS SHOULD BE BROUGHT TO THE ATTENTION OF THE M&E BUILDING SERVICES CONSULTANT IMMEDIATELY.
4. UNLESS OTHERWISE STATED ALL DIMENSIONS ARE IN MILLIMETRES.
5. DO NOT SCALE FROM THIS DRAWING.
6. DIMENSIONS TO BE CHECKED ON SITE BEFORE ANY WORK IS PUT IN HAND OR PREFABRICATED.
7. THIS DRAWING SHOULD ONLY BE USED FOR THE SPECIFIC SERVICES INTENDED.
8. THIS DRAWING SHOWS THE DESIGN INTENT ONLY. THE CONTRACTOR SHALL BE RESPONSIBLE FOR THE FULL CO-ORDINATION OF THE SERVICES INDICATED ON THIS AND ALL OTHER SERVICES DRAWINGS.
9. FINAL ACCESS AND SETTING OUT OF SERVICES SHALL BE AGREED BETWEEN THE ARCHITECT AND THE CONTRACTOR. THE PROJECT NOTES ARE TO BE READ IN CONJUNCTION WITH ALL RELEVANT TECHNICAL SPECIFICATIONS.
11. WHERE ELECTRICAL SERVICES PASS THROUGH FIRE COMPARTMENTATION CEILING VOIDS, FLOOR VOIDS AND STRUCTURAL WALLS THE CONTRACTOR SHALL SLEEVE/SEAL THE OPENING WITH AN ACOUSTIC AND FIRE SEALANT APPROVED BY THE ARCHITECT.
12. THE CONTRACTOR SHALL REFER TO THE ARCHITECT'S DRAWINGS FOR DETAILS OF FIRE COMPARTMENTATION.
13. DRAWING HAS BEEN PRODUCED FROM INCOMPLETE RECORD INFORMATION AND VISUAL SITE SURVEYS. CONTRACTOR IS RESPONSIBLE FOR VALIDATING ACCURACY PRIOR TO WORKS.
14. CONTRACTOR TO PROVIDE SCHEDULE OF PROPOSED SERVICES ISOLATIONS PRIOR TO WORK COMMENCING.
15. DRAWINGS ARE INDICATIVE ONLY AND ARE SHOWN FOR THE DESIGN INTENT AND THE DESIGN & BUILD CONTRACTOR'S PRICING PURPOSE. THE CONTRACTOR SHALL VERIFY ALL ASPECTS OF THE DESIGN DURING HIS DESIGN PHASE.



P01	TENDER	11/04/2017	LH
Rev	Description	Date	Approved

TENDER

Statut/Suitability of Drawing

BUROHAPPOLD
ENGINEERING

17 Newman Street London W1T 1PD UK	Tel: +44 (0)2079 279 700 Fax: +44 (0)207 874 145 Email: 035833@burohappold.com Web: www.burohappold.com
---	--

Architect: *HawkinsBrown*
 Project: **UCL Institute of Education**
 Dwg Title: **Public Health Services Rainwater Drainage Services Schematic**

Job No. 035833	Scale@A1 1 : 1
Drawing No. 20BW-BHE-WA-XX-SC-P-XX-7002	Revision P01