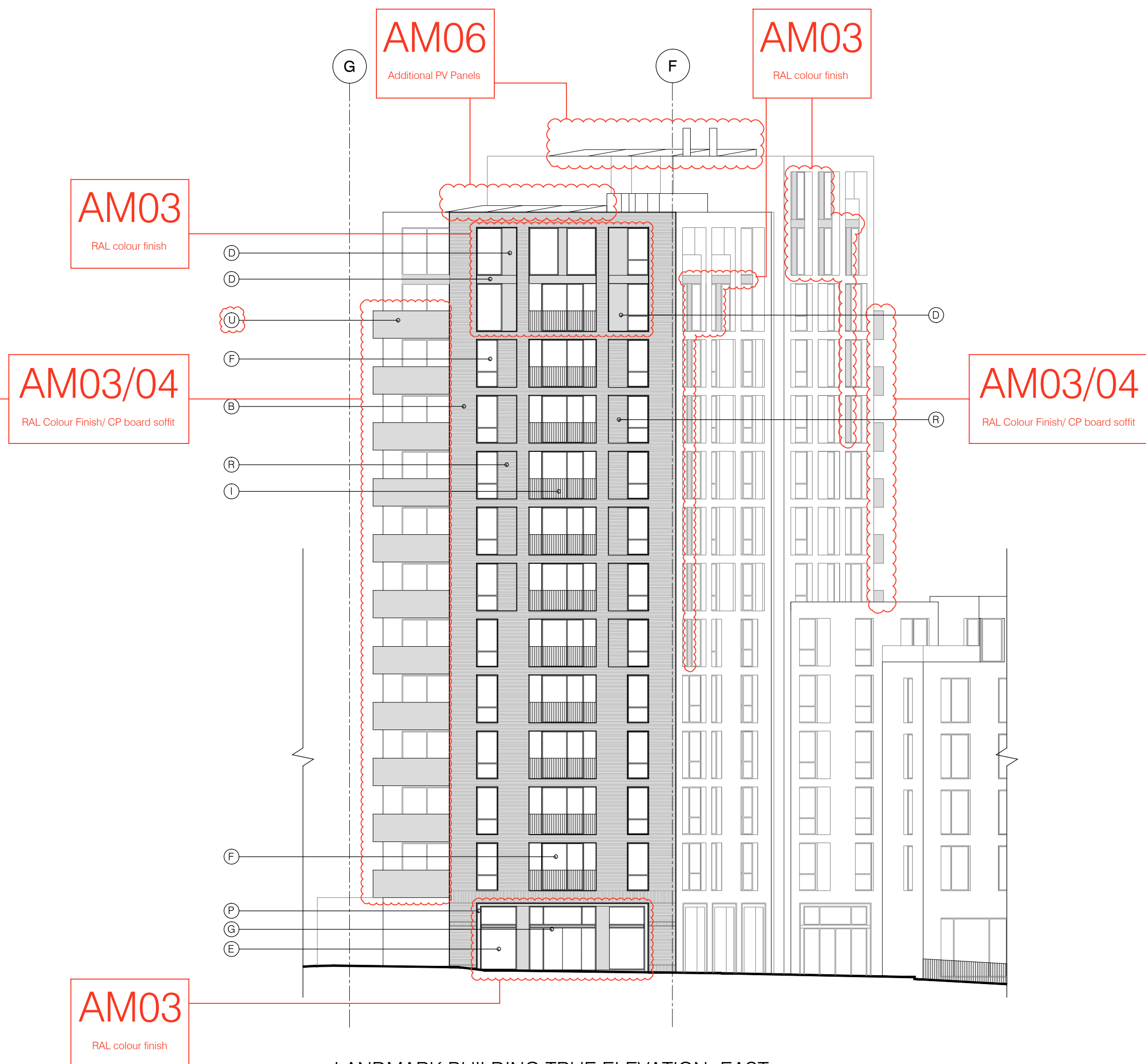
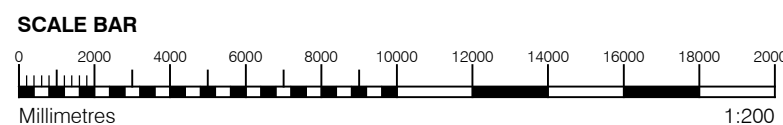


1 LANDMARK BUILDING TRUE ELEVATION- NORTH
1:200



2 LANDMARK BUILDING TRUE ELEVATION- EAST
1:200



- GENERAL NOTES**
- This drawing is copyright of PTE architects
 - Use figured dimensions only. DO NOT SCALE.
 - All dimensions are in millimetres unless noted otherwise
 - All levels are in metres above ordnance datum unless noted otherwise
 - This drawing must be read in conjunction with all other relevant drawings and specifications from the Architect and other consultants

- NOTES**
- All setting out to be confirmed on site prior to construction - any discrepancy must be immediately reported to the Architect.

MATERIAL KEY

- A** - Brick work type 1: Red Brick, stretcher bond with light colour mortar. Openings to have a deep brick reveal (approx 190mm unless stated otherwise).
- B** - Brick work type 2: Reflective blue/purple Brick, stretcher bond with dark grey mortar. Openings to have a deep brick reveal (approx 190mm unless stated otherwise).
- C** - Brick work type 3: White glazed brick, stack bonded with white colour mortar, to Block F recessed balconies.
- D** - Metal panel: RAL colour finish panels with hidden fixings and minimal joints.

- E** - Shop front frameless glass curtain walling with 75mm aluminum capping at base, RAL colour finish aluminum framed double or triple glazed doors to match.
- F** - Windows / doors: PPC aluminum framed double or triple glazed units (manufacturer to be agreed).
- G** - Canopies: Pre-formed metal boxed canopy in RAL colour finish with hidden structure and integral lighting.
- H** - Perforated metal balustrade or privacy screen: perforated metal (RAL colour finish) supported off PPC coated frame with hidden fixings and minimal joints - allow for non-uniform setting out of perforations - details to be agreed.

- I** - Metal Railing Balustrade: formed from PPC vertical flats (approx 50 x 12mm).

- J** - Metal Railing Balustrade: formed from PPC vertical flats (approx 50 x 12mm) extending to balcony soffit with metal plate fascia fixed to balcony edge.

- K** - Precast concrete or stone coping to parapet wall - allow for reinforcement back to structure.

- L** - Glass balustrade: frameless glass with no visible fixings.
- M** - Brick work type 4: Red Glazed brickwork, stack bonded to residential entrances

- N** - Hit and miss brickwork wall to basement cycle store - free area to meet ventilation requirements to basement.
- O** - 1.2 m high Fagus sylvatica (beech) instant hedge planted in a double staggered row.

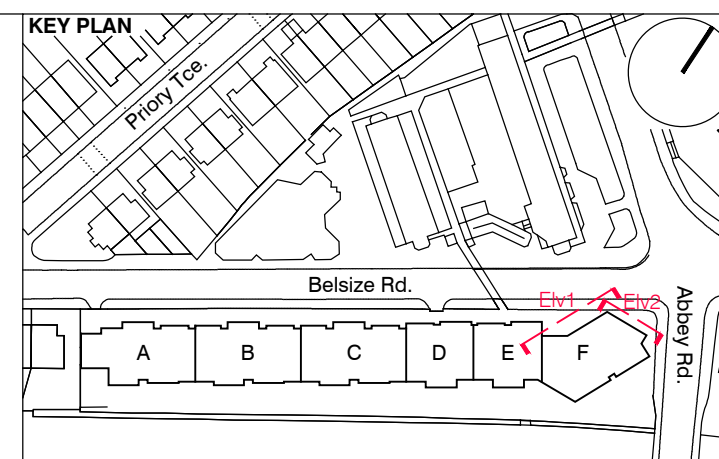
- P** - Reconstituted Stone on fixing ancon bracket to form architrave detail to concierge/supermarket/retail entrances.
- Q** - Aluminium PPC louvred doors/panels to refuse store/car park ramp/fire exits/substation/vent intake or exhaust locations.

- R** - Brick work type 2: Slightly recessed brick wall with stepped brick coursing.

- S** - Close boarded timber fence to meet Acoustic requirements.

- T** - Brick work type 5: Reduced specification / off-shade brick wall forming retaining structure.

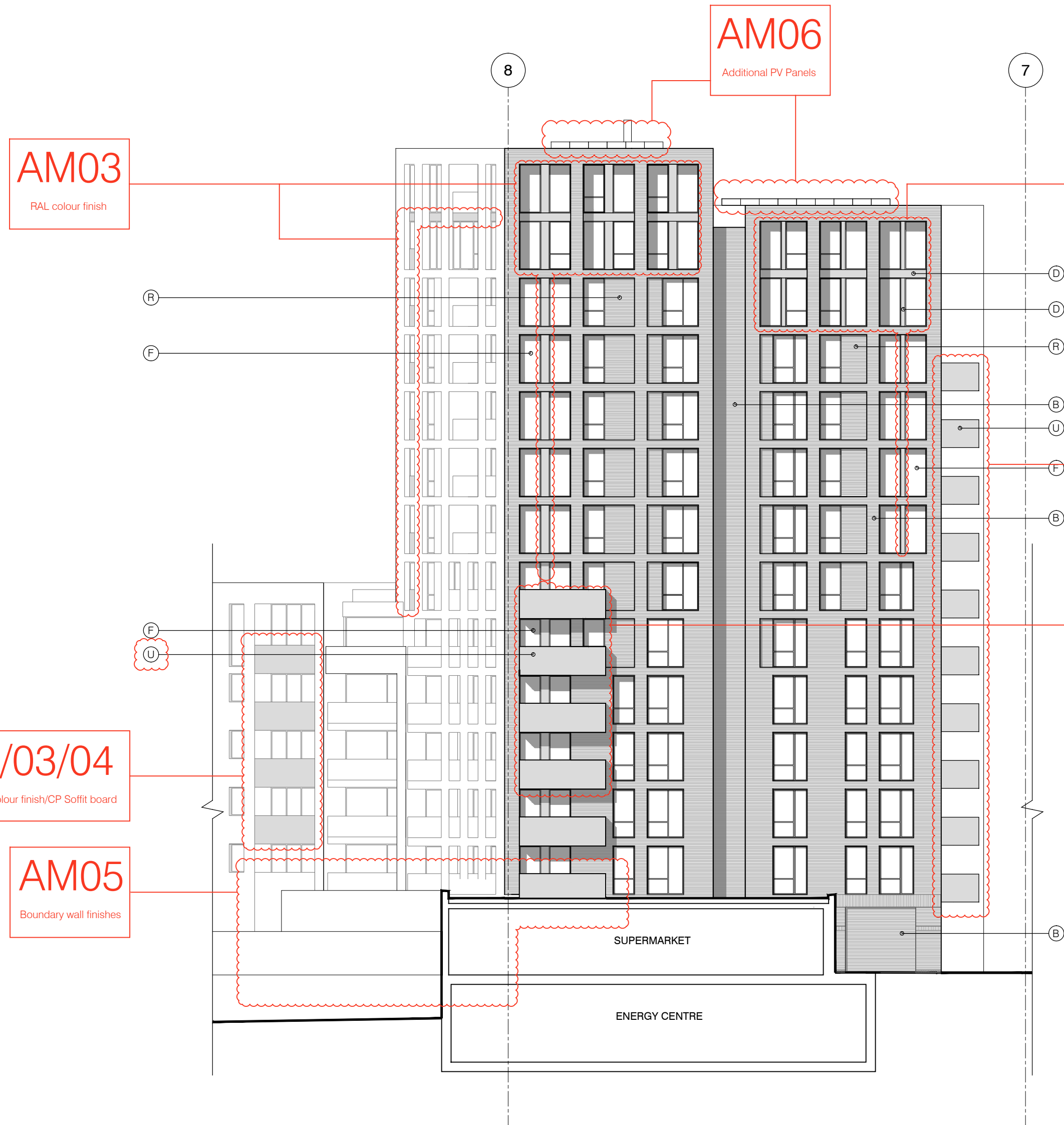
- U** - Perforated metal balustrade: perforated metal (RAL colour finish) with leaf pattern, supported off PPC coated frame with hidden fixings and minimal joints - allow for non-uniform setting out of perforations - details to be agreed.



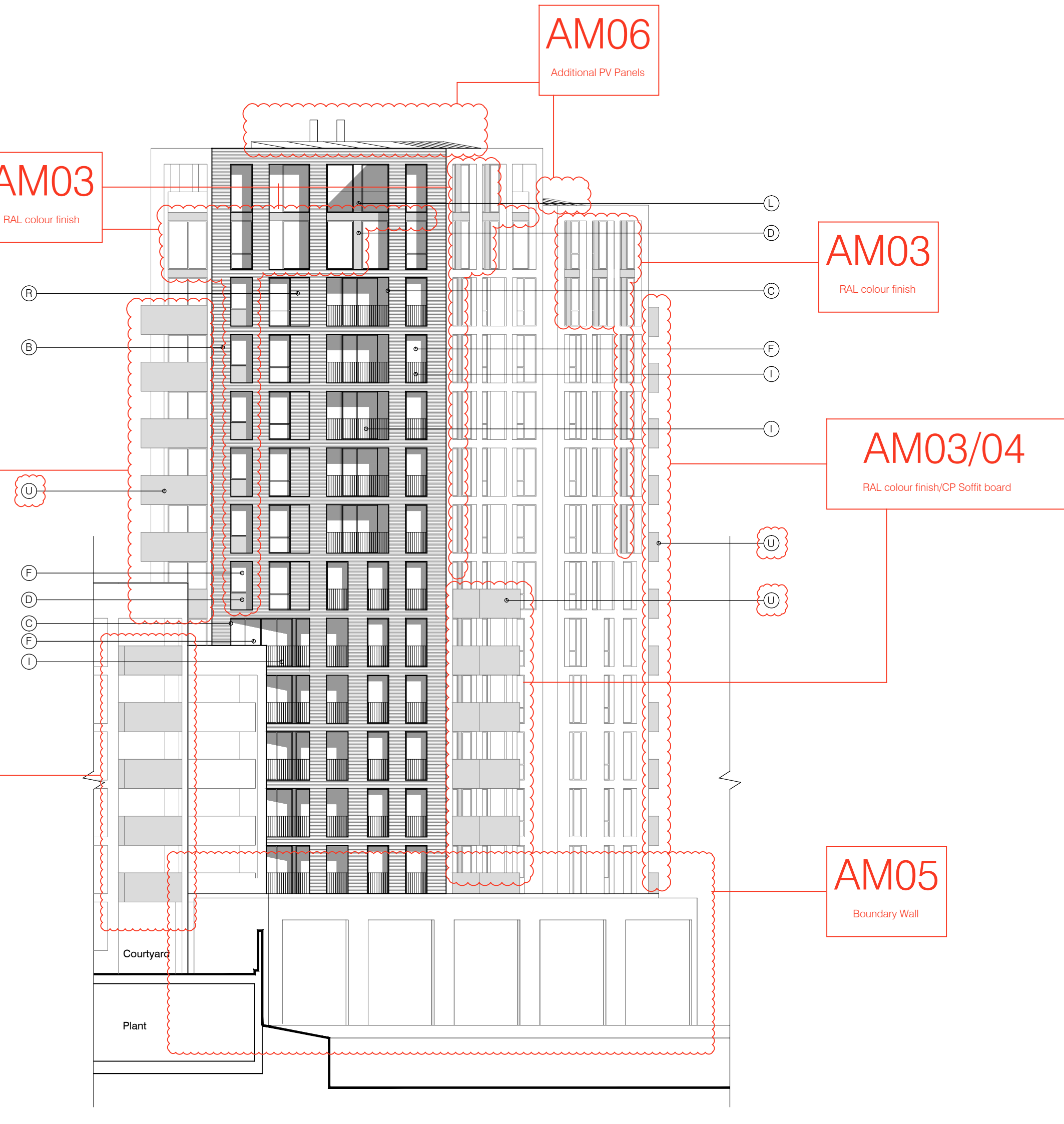
S73 APPLICATION				
rev.	date	description	drawn	audited
F	28.04.17	Section 73 issued to planning.	DS	DPD
F	31.03.17	Amendment references added. Issued to Wates prior to planning submission.	DS	DB
E	31.06.16	Section 73 issued to planning.	EN	DPD

PLANNING

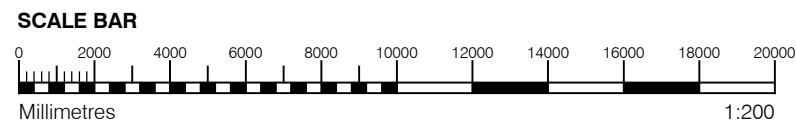
Despcker Wharf 38 Graham Street London N1 6JX		t: 020 7336 7777 f: 020 7336 0770		w: www.ptea.co.uk e: forename.surname@ptea.co.uk	
project ABBEY AREA REGENERATION-PHASE 1 LONDON		job.no. 12_510	drawn BM	audited DPD	scale 1:200@A1
sheet title GENERAL ARRANGEMENT LANDMARK BUILDING TRUE ELEVATION-NORTH & EAST		sheet no. 510_1_PL_303	date JUL 13	rev F	



1 LANDMARK BUILDING TRUE ELEVATION- SOUTH
1:200



2 LANDMARK BUILDING TRUE ELEVATION- WEST
1:200



GENERAL NOTES

- This drawing is copyright of PTE architects
- Use figured dimensions only. DO NOT SCALE.
- All dimensions are in millimetres unless noted otherwise
- All levels are in metres above ordnance datum unless noted otherwise
- This drawing must be read in conjunction with all other relevant drawings and specifications from the Architect and other consultants

NOTES

- All setting out to be confirmed on site prior to construction - any discrepancy must be immediately reported to the Architect.

MATERIAL KEY

- A** - Brick work type 1: Red Brick, stretcher bond with light colour mortar. Openings to have a deep brick reveal (approx 190mm unless stated otherwise).
- B** - Brick work type 2: Reflective blue/purple Brick, stretcher bond with dark grey mortar. Openings to have a deep brick reveal (approx 190mm unless stated otherwise).
- C** - Brick work type 3: White glazed brick, stack bonded with white colour mortar, to Block F recessed balconies.
- D** - Metal panel: RAL colour finish panels with hidden fixings and minimal joints.

- E** - Shop front frameless glass curtain walling with 75mm aluminum capping at base, RAL colour finish aluminum framed double or triple glazed doors to match.
- F** - Windows / doors: PPC aluminum framed double or triple glazed units (manufacturer to be agreed).
- G** - Canopies: Pre-formed metal boxed canopy in RAL colour finish with hidden structure and integral lighting.

- H** - Perforated metal balustrade or privacy screen: perforated metal (RAL colour finish) supported off PPC coated frame with hidden fixings and minimal joints - allow for non-uniform setting out of perforations - details to be agreed.

- I** - Metal Railing Balustrade: formed from PPC vertical flats (approx 50 x 12mm).

- J** - Metal Railing Balustrade: formed from PPC vertical flats (approx 50 x 12mm) extending to balcony soffit with metal plate fascia fixed to balcony edge.

- K** - Precast concrete or stone coping to parapet wall - allow for reinforcement back to structure.

- L** - Glass balustrade: frameless glass with no visible fixings.
- M** - Brick work type 4: Red Glazed brickwork, stack bonded to residential entrances

- N** - Hit and miss brickwork wall to basement cycle store - free area to meet ventilation requirements to basement.

- O** - 1.2 m high Fagus sylvatica (beech) instant hedge planted in a double staggered row.

- P** - Reconstituted Stone on fixing ancon bracket to form architrave detail to concierge/supermarket/retail entrances.

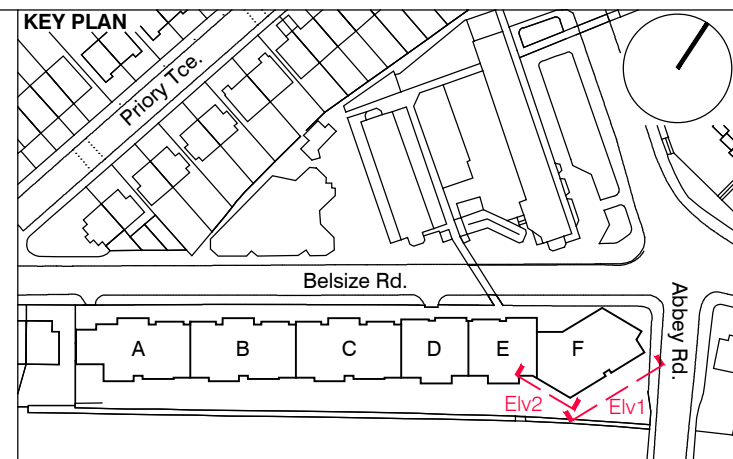
- Q** - Aluminium PPC louvred doors/panels to refuse store/car park ramp/fire exits/substation/vent intake or exhaust locations.

- R** - Brick work type 2: Slightly recessed brick wall with stepped brick coursing.

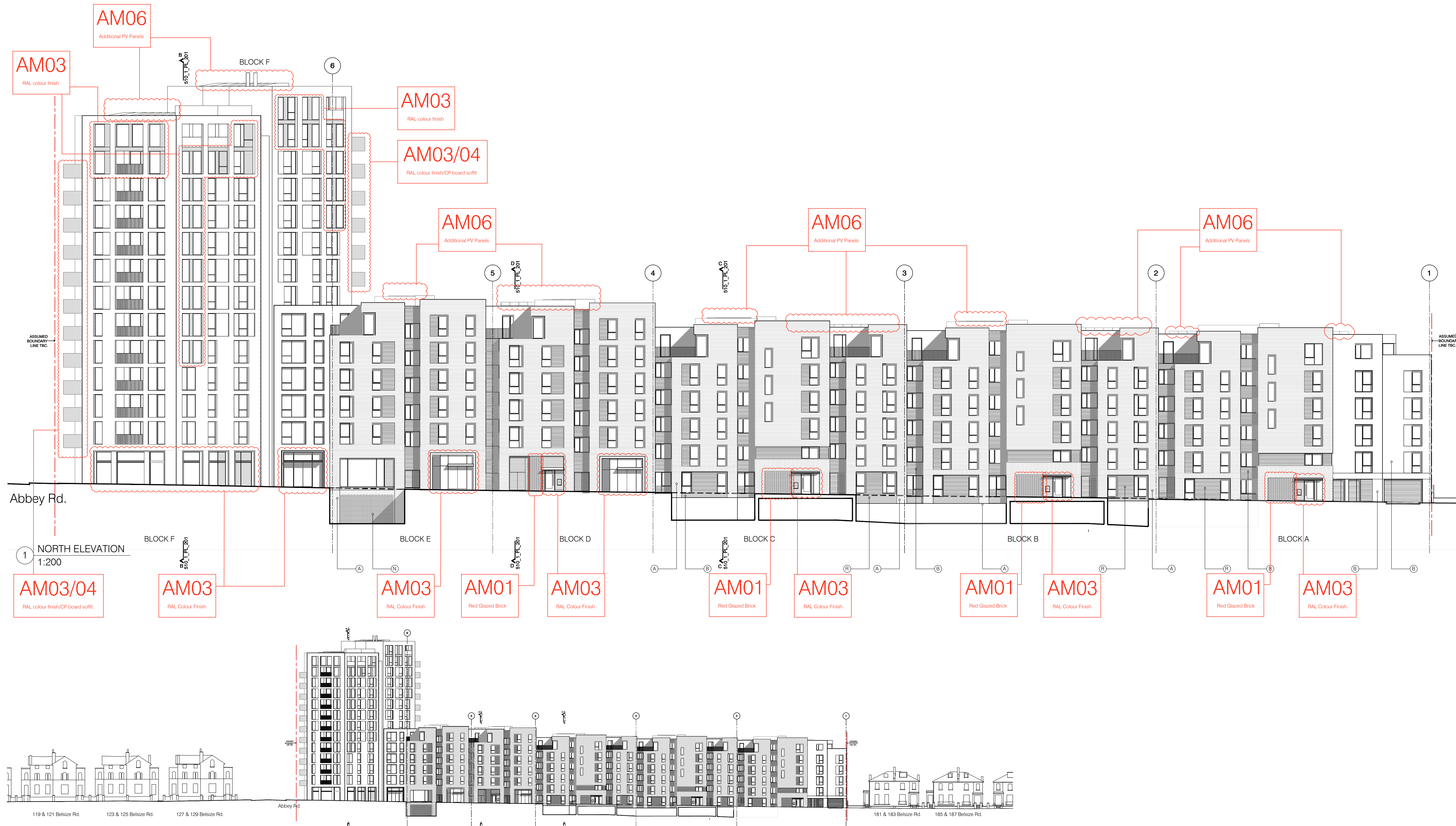
- S** - Close boarded timber fence to meet Acoustic requirements.

- T** - Brick work type 5: Reduced specification / off-shade brick wall forming retaining structure.

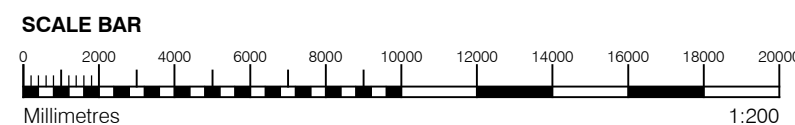
- U** - Perforated metal balustrade: perforated metal (RAL colour finish) with leaf pattern, supported off PPC coated frame with hidden fixings and minimal joints - allow for non-uniform setting out of perforations - details to be agreed.



S73 APPLICATION									
D	28.04.17	Section 73 issued to planning.						DS	DPD
D	31.03.17	Amendment references added. Issued to Wates prior to planning submission.						DS	DB
C	21.06.16	Section 73 issued to planning.						EN	DPD
rev.	date	description						dm	aud
drawing status									
PLANNING									
<div>Diespeker Wharf 38 Graham Street London N1 8JX</div> <div><div>PTEa</div><div>POLLARD THOMAS EDWARDS architects</div></div>									
t: 020 7336 7777		w: www.ptea.co.uk							
f: 020 7336 0770		e: forename.surname@ptea.co.uk							
project		job no.		drawn	audited	scale	date		
ABBEY AREA REGENERATION-PHASE 1 LONDON		12_510		LG	DPD	1:200@A1	JUL 13		
drawing title				drawn by		scale		rev	
GENERAL ARRANGEMENT LANDMARK BUILDING TRUE ELEVATION-SOUTH & WEST				510_1_PL_304				D	



2 NORTH SITE ELEVATION
1:500



GENERAL NOTES

- This drawing is copyright of PTE architects
- Use figured dimensions only. DO NOT SCALE.
- All dimensions are in millimetres unless noted otherwise
- All levels are in metres above Ordnance datum unless noted otherwise
- This drawing must be read in conjunction with all other relevant drawings and specifications from the Architect and other consultants

NOTES

- All setting out to be confirmed on site prior to construction - any discrepancy must be immediately reported to the Architect.

MATERIAL KEY

- A** - Brick work type 1: Red Brick, stretcher bond with light colour mortar. Openings to have a deep brick reveal (approx 190mm unless stated otherwise).
- B** - Brick work type 2: Reflective blue/purple Brick, stretcher bond with dark grey mortar. Openings to have a deep brick reveal (approx 190mm unless stated otherwise).
- C** - Brick work type 3: White glazed brick, stack bonded with white colour mortar, to Block F recessed balconies.
- D** - Metal panel: RAL colour finish panels with hidden fixings and minimal joints.

- E** - Shop front frameless glass curtain walling with 75mm aluminum capping at base, RAL colour finish aluminum framed double or triple glazed doors to match.
- F** - Windows / doors: PPC aluminum framed double or triple glazed units (manufacturer to be agreed).
- G** - Canopies: Pre-formed metal boxed canopy in RAL colour finish with hidden structure and integral lighting.
- H** - Perforated metal balustrade or privacy screen: perforated metal (RAL colour finish) supported off PPC coated frame with hidden fixings and minimal joints - allow for non-uniform setting out of perforations - details to be agreed.

- I** - Metal Railing Balustrade: formed from PPC vertical flats (approx 50 x 12mm).

- J** - Metal Railing Balustrade: formed from PPC vertical flats (approx 50 x 12mm) extending to balcony soffit with metal plate fascia fixed to balcony edge.

- K** - Precast concrete or stone coping to parapet wall - allow for reinforcement back to structure.

- L** - Glass balustrade: frameless glass with no visible fixings.

- M** - Brick work type 4: Red Glazed brickwork, stack bonded to residential entrances

- N** - Hit and miss brickwork wall to basement cycle store - free area to meet ventilation requirements to basement.

- O** - 1.2 m high Fagus sylvatica (beech) instant hedge planted in a double staggered row.

- P** - Reconstituted Stone on fixing ancon bracket to form architrave detail to concierge/supermarket/retail entrances.

- Q** - Aluminium PPC louvre doors/panels to refuse store/car park ramp/fire exits/substation/vent intake or exhaust locations.

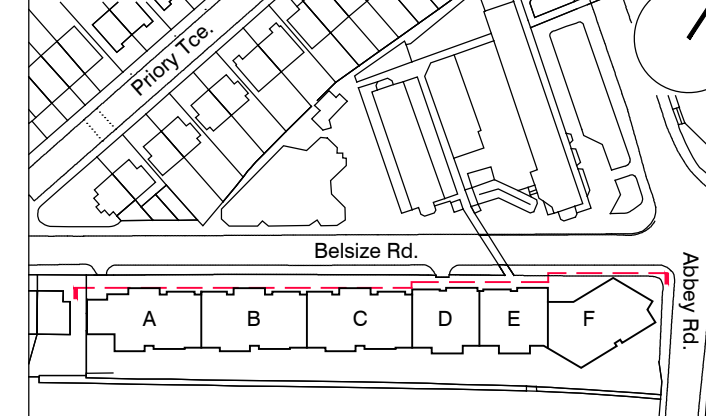
- R** - Brick work type 2: Slightly recessed brick wall with stepped brick coursing.

- S** - Close boarded timber fence to meet Acoustic requirements.

- T** - Brick work type 5: Reduced specification / off-shade brick wall forming retaining structure.

- U** - Perforated metal balustrade: perforated metal (RAL colour finish) with leaf pattern, supported off PPC coated frame with hidden fixings and minimal joints - allow for non-uniform setting out of perforations - details to be agreed.

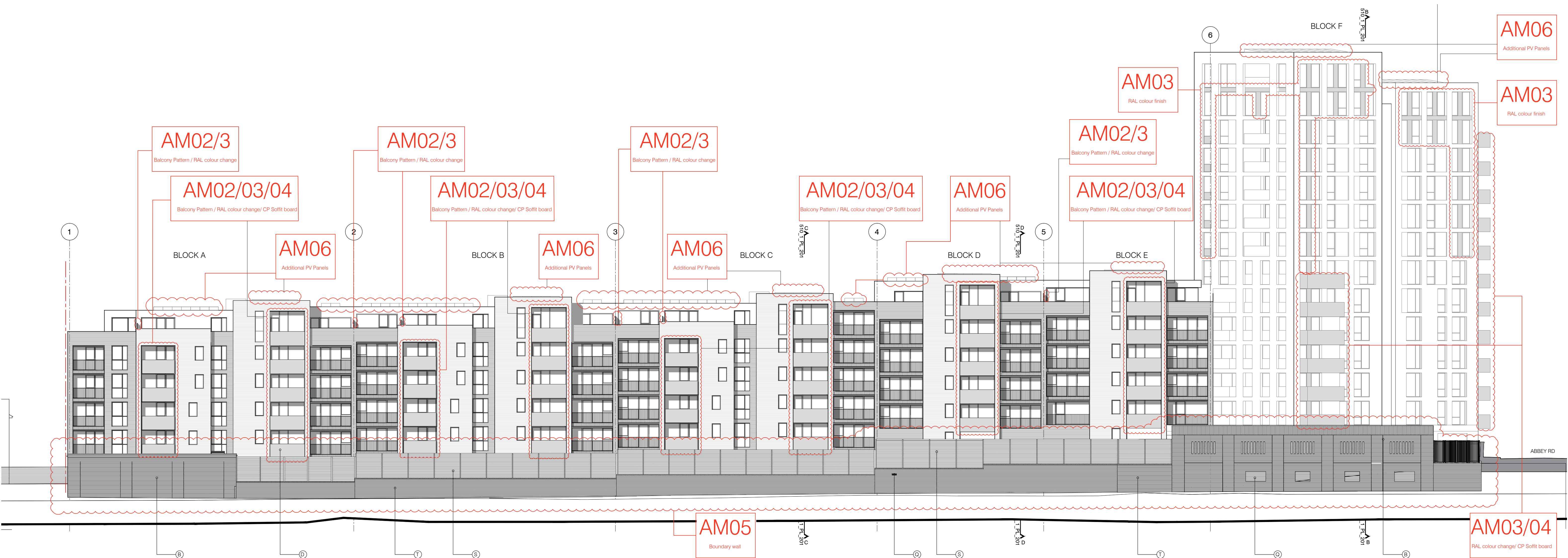
KEY PLAN



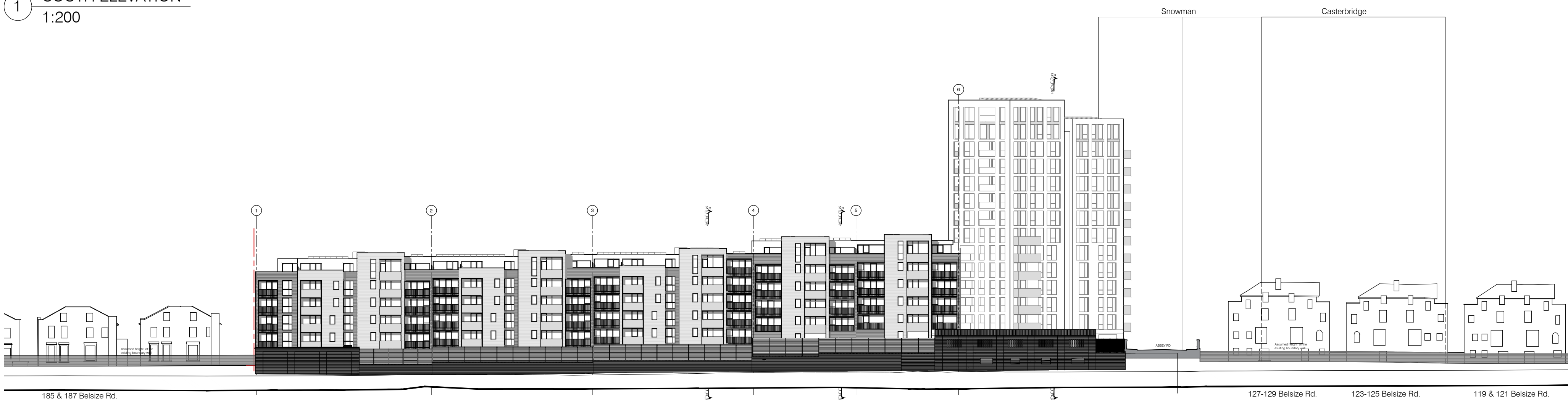
S73 APPLICATION				
F	28.04.17	Section 73 issued to planning.	DS	DPD
F	31.03.17	Amendment references added. Issued to Wales prior to planning submission.	DS	DB
E	21.06.16	Section 73 issued to planning.	EN	DPD
rev.	date	description	dm	aud

PLANNING

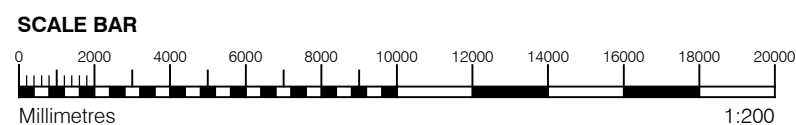
Despcker Wharf 38 Graham Street London N1 8JX t: 020 7336 7777 f: 020 7336 0770 w: www.ptea.co.uk e: forename.surname@ptea.co.uk						PTEa ROLLARD THOMAS EDWARDS architects					
project		job.no.		drawn		scaled		date			
ABBEY AREA REGENERATION-PHASE 1 LONDON		12_510		LG DPD		1:200@A1		JUL 13			
step title		step no.		step desc		rev					
GENERAL ARRANGEMENT NORTH & NORTH SITE ELEVATION through voids		510_1_PL_305				F					



1 SOUTH ELEVATION
1:200



2 SOUTH SITE ELEVATION
1:500



GENERAL NOTES

- This drawing is copyright of PTE architects
- Use figured dimensions only. DO NOT SCALE.
- All dimensions are in millimetres unless noted otherwise
- All levels are in metres above Ordnance datum unless noted otherwise
- This drawing must be read in conjunction with all other relevant drawings and specifications from the Architect and other consultants

NOTES

- All setting out to be confirmed on site prior to construction - any discrepancy must be immediately reported to the Architect.

MATERIAL KEY

- A** - Brick work type 1: Red Brick, stretcher bond with light colour mortar. Openings to have a deep brick reveal (approx 190mm unless stated otherwise).
- B** - Brick work type 2: Reflective blue/purple Brick, stretcher bond with dark grey mortar. Openings to have a deep brick reveal (approx 190mm unless stated otherwise).
- C** - Brick work type 3: White glazed brick, stack bonded with white colour mortar, to Block F recessed balconies.
- D** - Metal panel: RAL colour finish panels with hidden fixings and minimal joints.

- E** - Shop front frameless glass curtain walling with 75mm aluminum capping at base, RAL colour finish aluminum framed double or triple glazed doors to match.
- F** - Windows / doors: PPC aluminum framed double or triple glazed units (manufacturer to be agreed).
- G** - Canopies: Pre-formed metal boxed canopy in RAL colour finish with hidden structure and integral lighting.
- H** - Perforated metal balustrade or privacy screen: perforated metal (RAL colour finish) supported off PPC coated frame with hidden fixings and minimal joints - allow for non-uniform setting out of perforations - details to be agreed.

- I** - Metal Railing Balustrade: formed from PPC vertical flats (approx 50 x 12mm).
- J** - Metal Railing Balustrade: formed from PPC vertical flats (approx 50 x 12mm) extending to balcony soffit with metal plate fascia fixed to balcony edge.

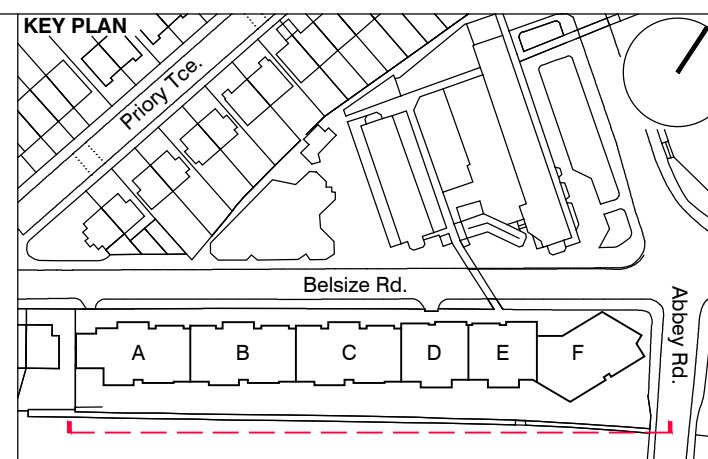
- K** - Precast concrete or stone coping to parapet wall - allow for reinforcement back to structure.
- L** - Glass balustrade: frameless glass with no visible fixings.
- M** - Brick work type 4: Red Glazed brickwork, stack bonded to residential entrances

- N** - Hit and miss brickwork wall to basement cycle store - free area to meet ventilation requirements to basement.
- O** - 1.2 m high Fagus sylvatica (beech) instant hedge planted in a double staggered row.

- P** - Reconstituted Stone on fixing ancon bracket to form architrave detail to concierge/supermarket/retail entrances.
- Q** - Aluminium PPC louvred doors/panels to refuse store/car park ramp/fire exits/substation/vent intake or exhaust locations.

- R** - Brick work type 2: Slightly recessed brick wall with stepped brick coursing.
- S** - Close boarded timber fence to meet Acoustic requirements.
- T** - Brick work type 5: Reduced specification / off-shade brick wall forming retaining structure.

- U** - Perforated metal balustrade: perforated metal (RAL colour finish) with leaf pattern, supported off PPC coated frame with hidden fixings and minimal joints - allow for non-uniform setting out of perforations - details to be agreed.



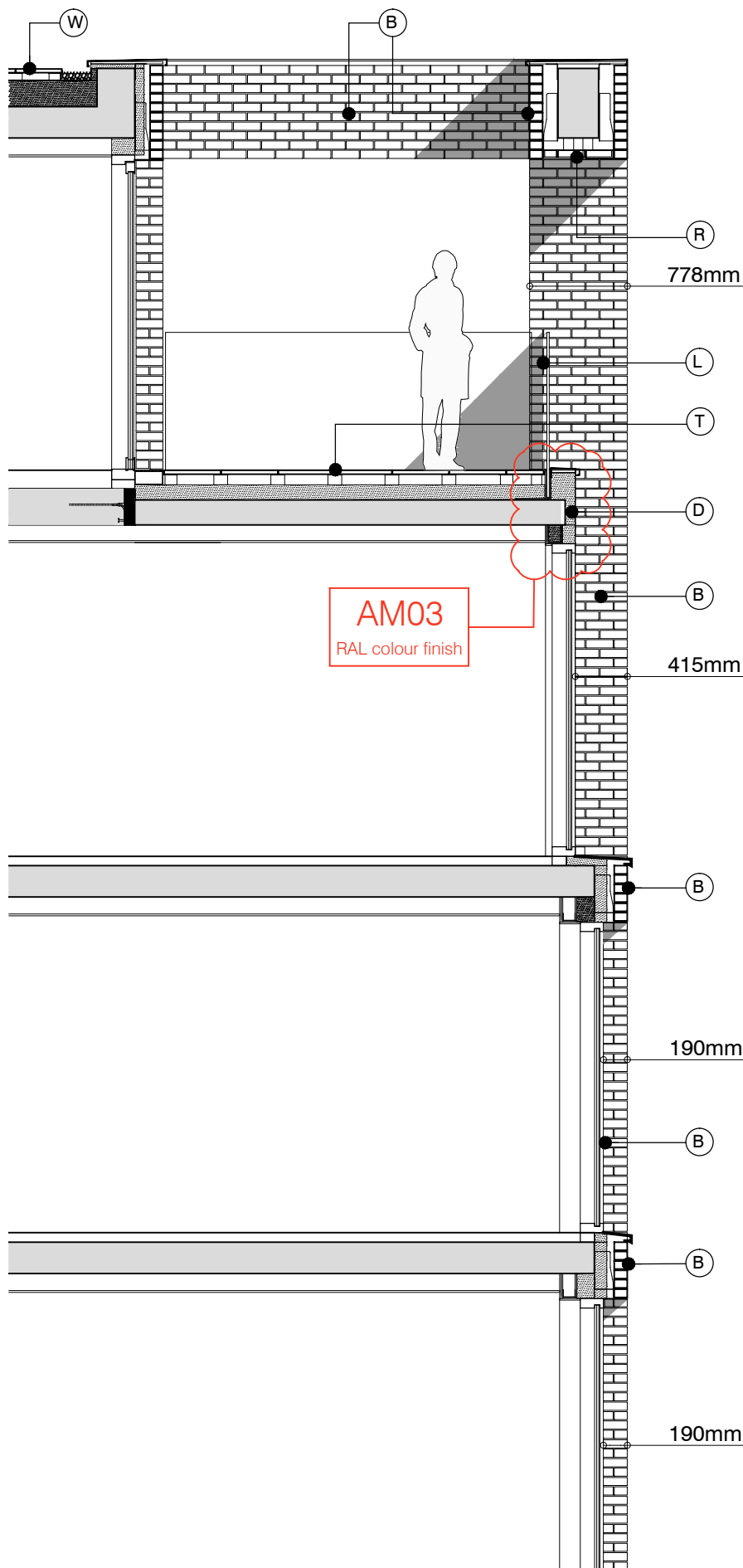
S73 APPLICATION					
D	28.04.17	Section 73 issued to planning.		DS	DPD
B	31.03.17	Amendment references added. Issued to Wales prior to planning submission.		DS	DB
C	21.06.16	Section 73 issued to planning.		EN	DPD
rev.	date	description		dm	aud

PLANNING

Despcker Wharf
38 Graham Street
London N1 8JX
t: 020 7336 7777 w: www.ptea.co.uk
f: 020 7336 0770 e: forename.surname@ptea.co.uk

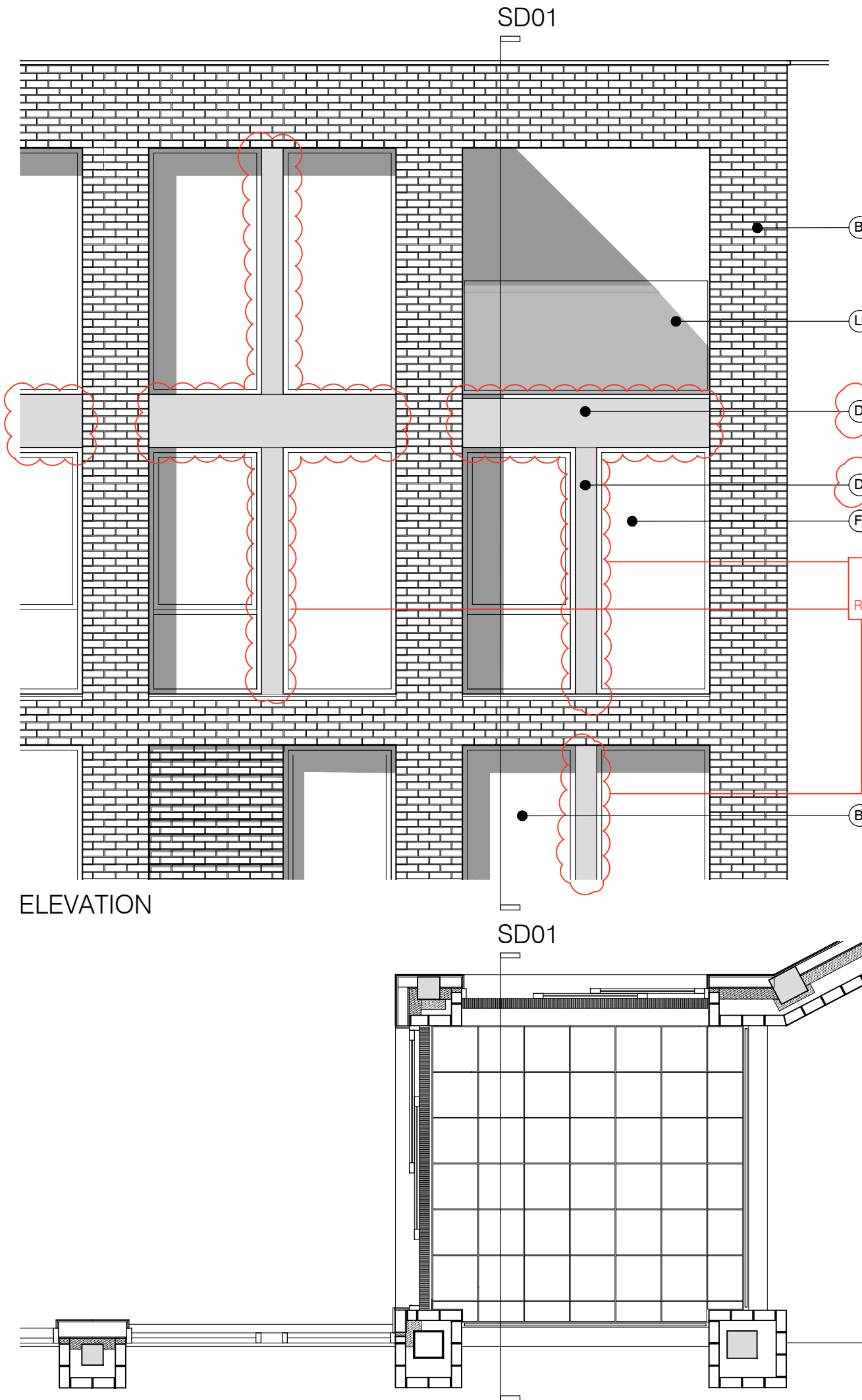
PTEa
POLLARD THOMAS EDWARDS architects

project	ABBEY AREA REGENERATION-PHASE 1	job.no.	12_510	LG	DPD	scale	1:200@A1	date	JUL 13
sheet	GENERAL ARRANGEMENT SOUTH & SOUTH SITE ELEVATIONS inc boundary	sig. no.	510_1_PL_306	rev	D				



SECTION DETAIL 01

TERRACE PLAN



MATERIAL KEY

B - Brick work type 2: Reflective blue/purple brick, stretcher bond brickwork. Openings to have a deep brick reveal (approx 190mm unless stated otherwise).

D - Metal panel: RAL colour finish panels with hidden fixings and minimal joints.

F - Windows / doors: RAL colour finish aluminum framed double or triple glazed units (manufacturer to be agreed).

L - Glass balustrade: frameless glass with no visible fixings.

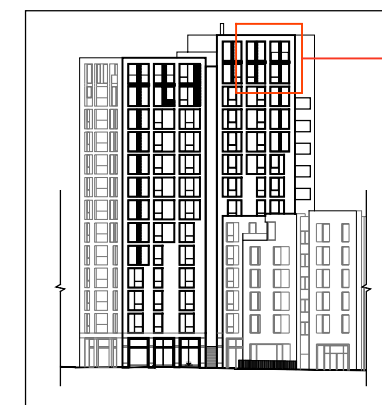
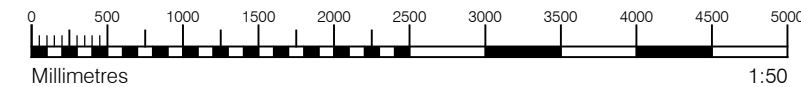
R - Brick Soffit on fixing ancon bracket : Brick type to match facing brick

T - Terrace: with 50mm thick stone pavers (pietra serena sandstone or similar)

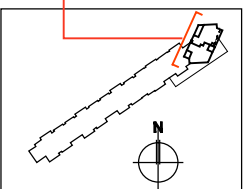
W - Roofs: Insulated flat roof with precast concrete pavers to Block F

Y - Brick work type 2: Slightly recessed brick wall with stepped brick coursing

For specification, refer to drawing PL 001-Rev B included within this Section 73 application



Key location changed



S73 APPLICATION

D 28.04.17 Section 73 issued to planning.

DS DPD

D 31.03.17 Amendment references added. Material key updated. Issued to Wates prior to planning submission.

DS DB

C 21.06.16 Section 73 issued to planning.

EN DPD

rev. date notes

drn aud

drawing status

PLANNING

Diespoker Wharf
38 Graham Street
London N1 8JX

t: 020 7336 7777
f: 020 7336 0770

w: www.ptea.co.uk
e: forename.surname@ptea.co.uk

PTEa
POLLARD THOMAS EDWARDS architects

project ABBEY AREA REGENERATION-PHASE 1
LONDON

job.no. 12_510

drawn EG
audited DPD

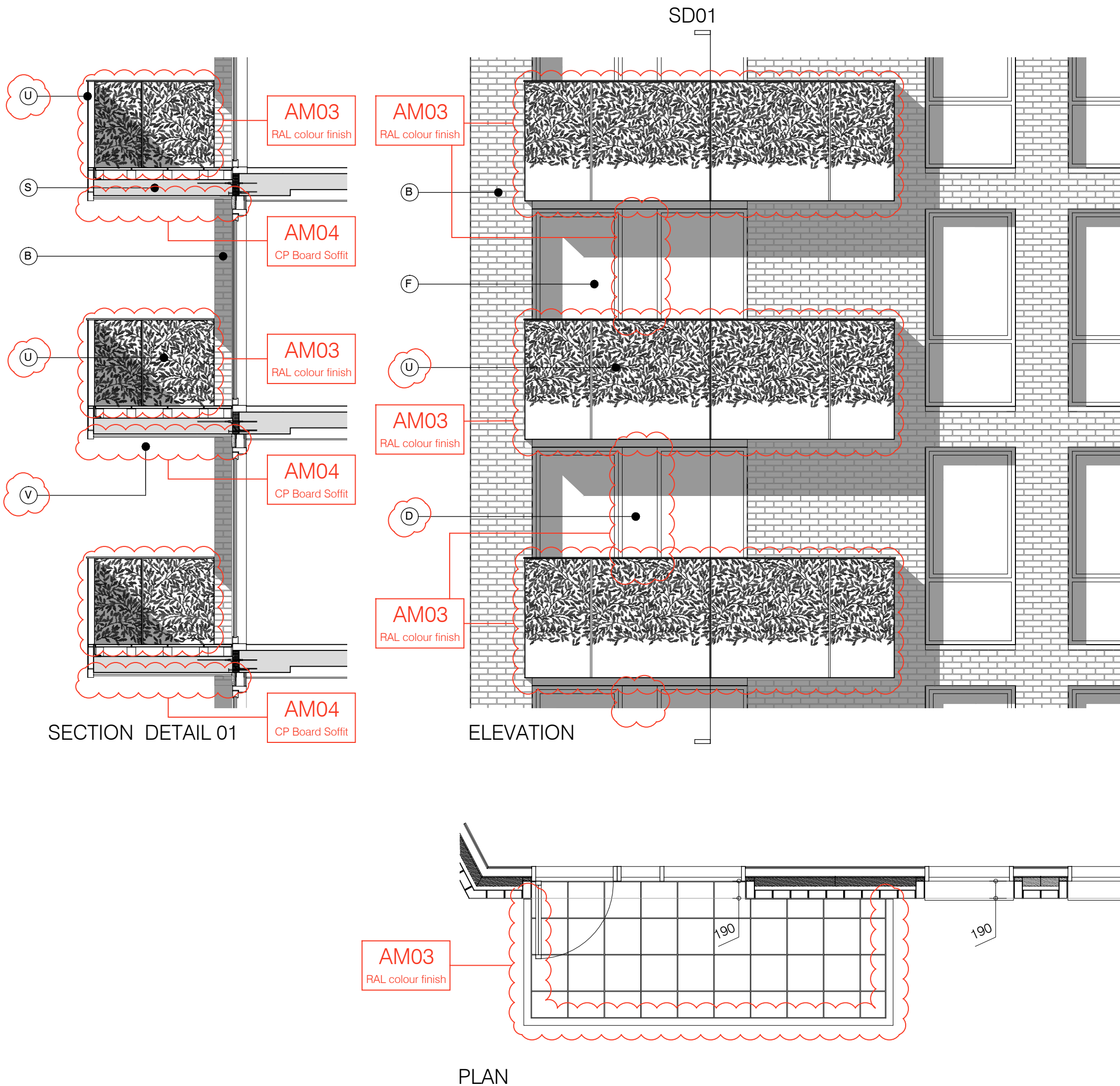
scale 1:50@A3

date JUL 13

dwg title TOP FLOOR TERRACE DETAILS

orig. no. 510_1_PL_401

rev D



MATERIAL KEY

B - Brick work type 2: TYPE TO BE AGREED but darker than Type 1, stretcher bond brickwork with Cemex London White mortar or similar. Allow for darker mortar to recessed brick walls. Openings to have a deep brick reveal (approx 190mm unless stated otherwise).

D - Metal panel: RAL colour finish panels with hidden fixings and minimal joints.

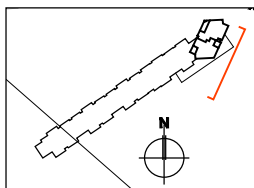
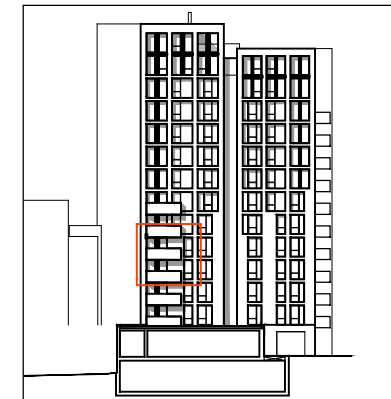
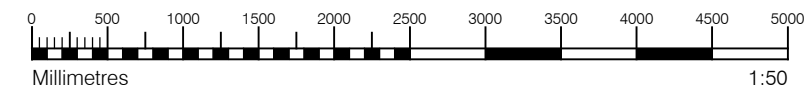
F - Windows / doors: RAL colour finish aluminum framed double or triple glazed units (manufacturer to be agreed).

S - Balcony: Thermally broken in-situ cast concrete cantilevered balcony structure with 50mm thick stone pavers (pietra serena sandstone or similar)

U - Perforated metal balustrade: perforated metal (RAL colour finish) with leaf pattern, supported off PPC coated frame with hidden fixings and minimal joints - allow for non-uniform setting out of perforations - details to be agreed.

V - Cement Particle board soffit (unfinished) screw fixed with caps to supporting frame

For specification, refer to drawing PL 001-Rev B included within this Section 73 application



S73 APPLICATION

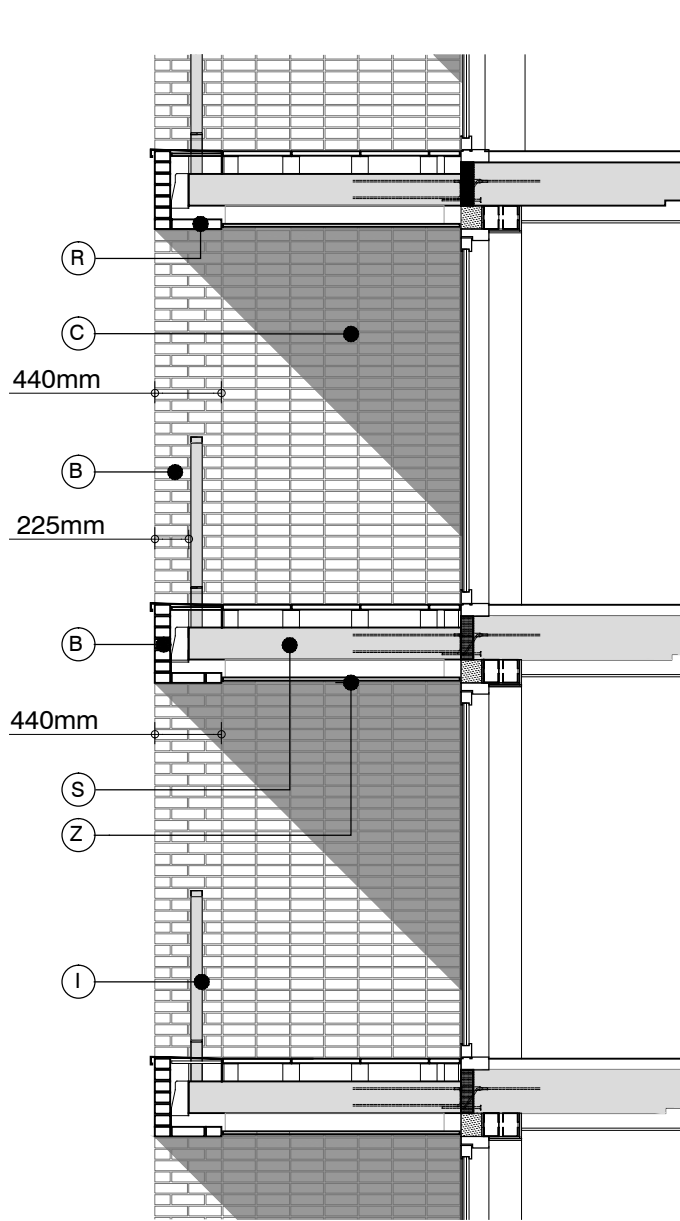
D 28.04.17 Section 73 issued to planning.

DS DPD

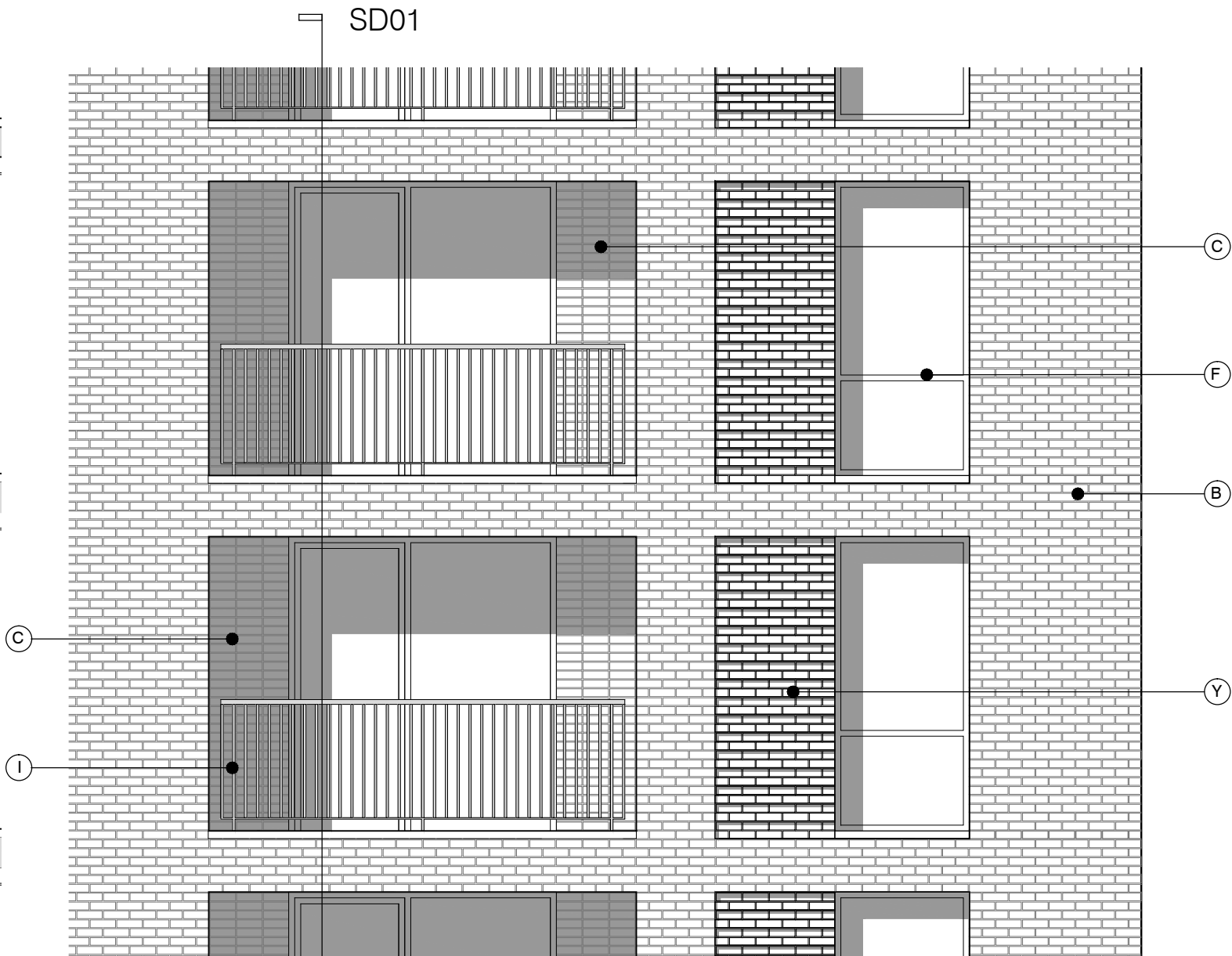
C	31.03.17 Amendment references added. Material key updated. Issued to Wates prior to planning submission.	DS	DB
---	--	----	----

B 21.06.16 Section 73 issued to planning. EN DPD

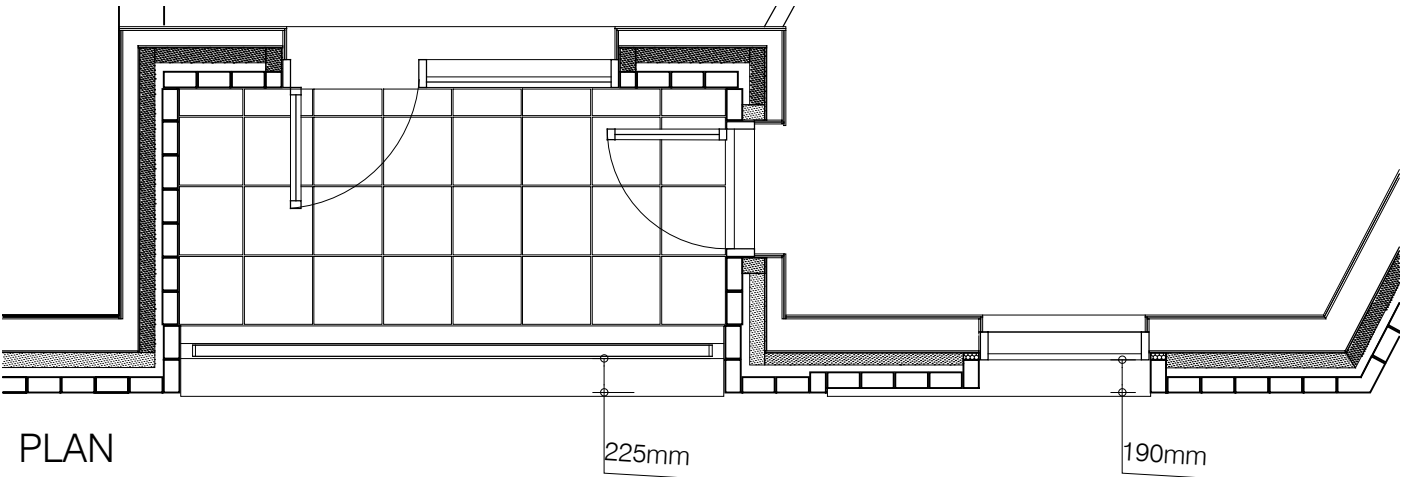
rev.	date	notes	dm				aud	
drawing status			PLANNING					
Diespeker Wharf 38 Graham Street London N1 8JX t: 020 7336 7777 w: www.ptea.co.uk f: 020 7336 0770 e: forename.surname@ptea.co.uk			<div>PTEa</div> <div>POLLARD THOMAS EDWARDS architects</div>					
project		job.no.	drawn	audited	scale	date		
ABBEY AREA REGENERATION-PHASE 1 LONDON		12_510	EG	DPD	1:50@A3	JUL 13		
dwg title			drg. no.			rev		
PROJECTING BALCONY DETAILS			510_1_PL_402			C		



SECTION DETAIL 01



ELEVATION



PLAN

MATERIAL KEY

B - Brick work type 2: Reflective blue/purple brick, stretcher bond brickwork with Cemex London White mortar or similar. Allow for darker mortar to recessed brick walls. Openings to have a deep brick reveal (approx 190mm unless stated otherwise).

C - Glazed brickwork: White glazed brick, stack bonded, to Block F recessed balconies. Soffits to be brick slips (same brick specification as recessed walls), also stack bonded.

E - Shop front frameless glass curtain walling with 75mm aluminum capping at base, RAL colour finish aluminum framed double or triple glazed doors to match.

F - Windows / doors: RAL colour finish aluminum framed double or triple glazed units (manufacturer to be agreed).

I - Metal Railing Balustrade: formed from PPC vertical flats (approx 50 x 12mm)

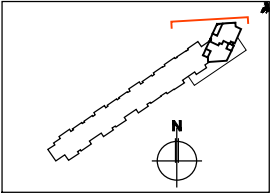
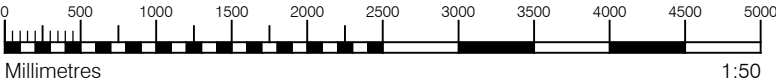
S - Balcony: Thermally broken in-situ cast concrete cantilevered balcony structure with 50mm thick stone pavers (pietra serena sandstone or similar)

R - Brick Soffit on fixing ancon bracket : Brick type to match facing brick

Y - Brick work type 2: Slightly recessed brick wall with stepped brick coursing

Z - Render / soffit panel to underside of balcony

For specification, refer to drawing PL 001-Rev B included within this Section 73 application



S73 APPLICATION

C 28.04.17 Section 73 issued to planning. DS DPD

C 31.03.17 Amendment references added. Material key updated. Issued to Wates prior to planning submission. DS DB

B 21.06.16 Section 73 issued to planning. EN DPD
rev. date notes drn aud

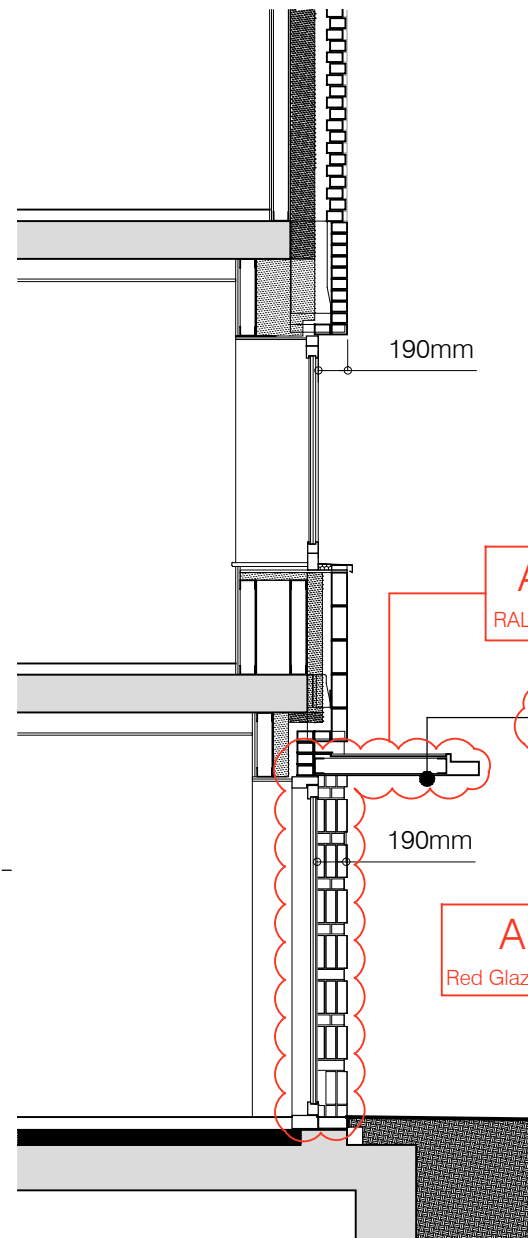
drawing status PLANNING

Diespoker Wharf
38 Graham Street
London N1 8JX
t: 020 7336 7777 w: www.ptea.co.uk
f: 020 7336 0770 e: forename.surname@ptea.co.uk

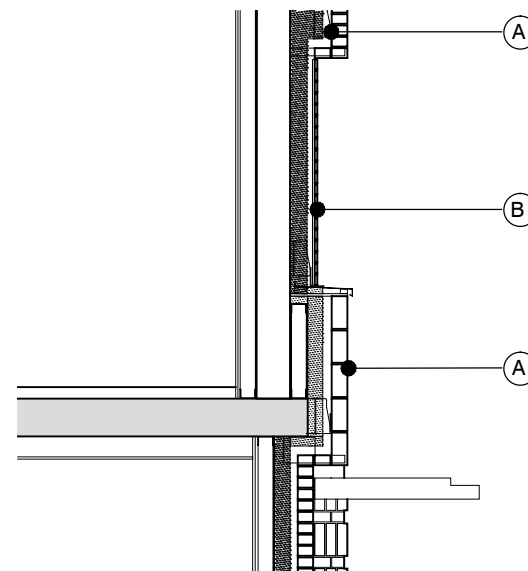
PTEa
POLLARD THOMAS EDWARDS architects

project ABBEY AREA REGENERATION-PHASE 1 LONDON job.no. 12_510 draw EG audited DPD scale 1:50@A3 date JUL 13

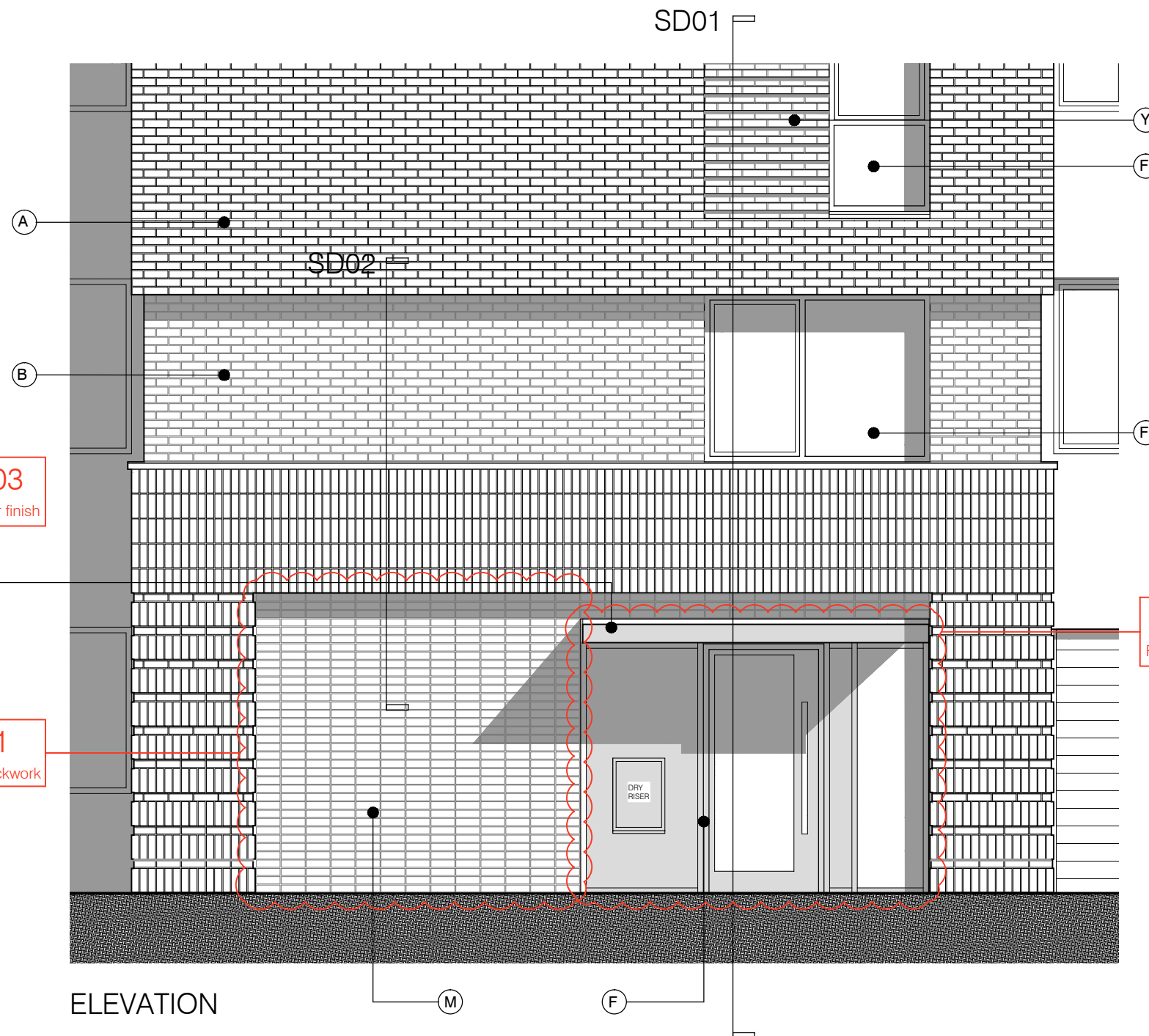
dwg title INSET BALCONY DETAIL orig. no. 510_1_PL_403 rev C



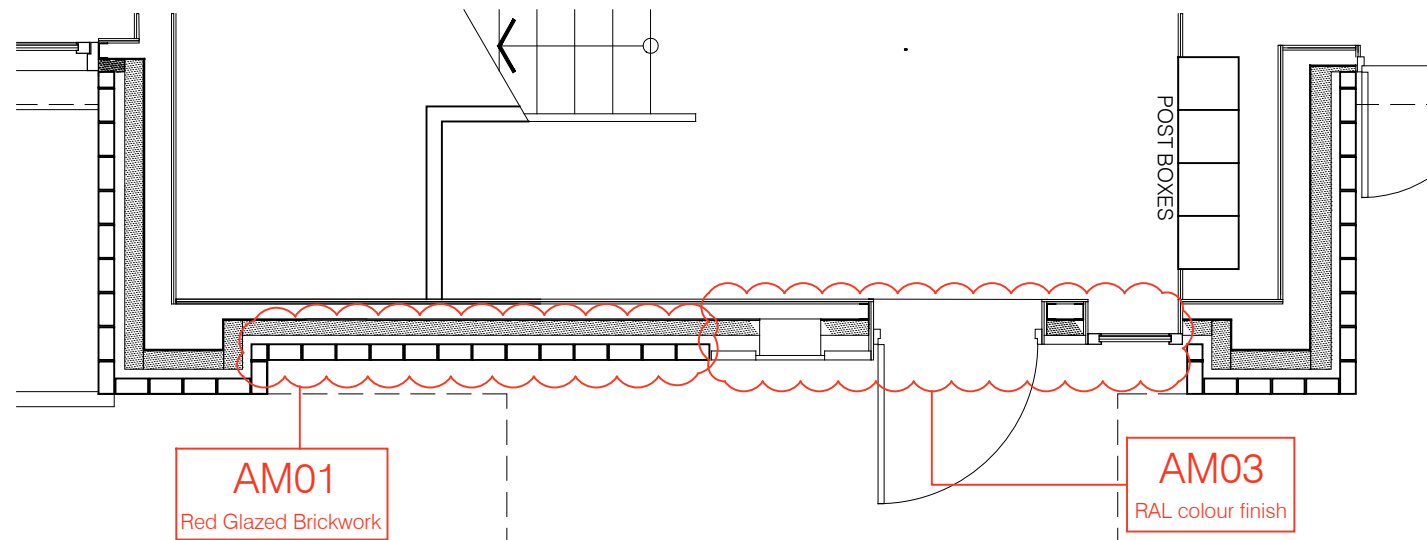
SECTION DETAIL 01



SECTION DETAIL 02



ELEVATION



PLAN

MATERIAL KEY

A - Brick work type 1: stretcher bond brickwork. Openings to have a deep brick reveal (approx 190mm unless stated otherwise).

B - Brick work type 2: stretcher bond brickwork. Allow for darker mortar to recessed brick walls. Openings to have a deep brick reveal (approx 190mm unless stated otherwise).

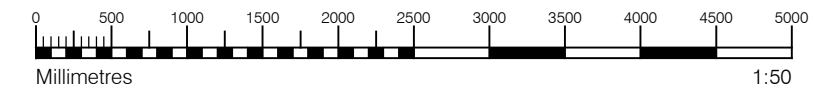
F - Windows / doors: RAL colour finish aluminum framed double or triple glazed units (manufacturer to be agreed).

G - Canopies: Pre-formed metal boxed canopy in RAL colour finish with hidden structure and integral lighting.

M - Residential Entrances: Glazed brickwork - Red stack bonded.

Y - Brick work type 2: Slightly recessed brick wall with stepped brick coursing

For specification, refer to drawing PL 001-Rev B included within this Section 73 application



S73 APPLICATION

D 28.04.17 Section 73 issued for planning.

DS DPD

D 31.03.17 Amendment references added. Material key updated. Issued to Wates prior to planning submission.

DS DB

C 21.06.16 Section 73 issued to planning.

EN DPD

rev. date notes drn aud

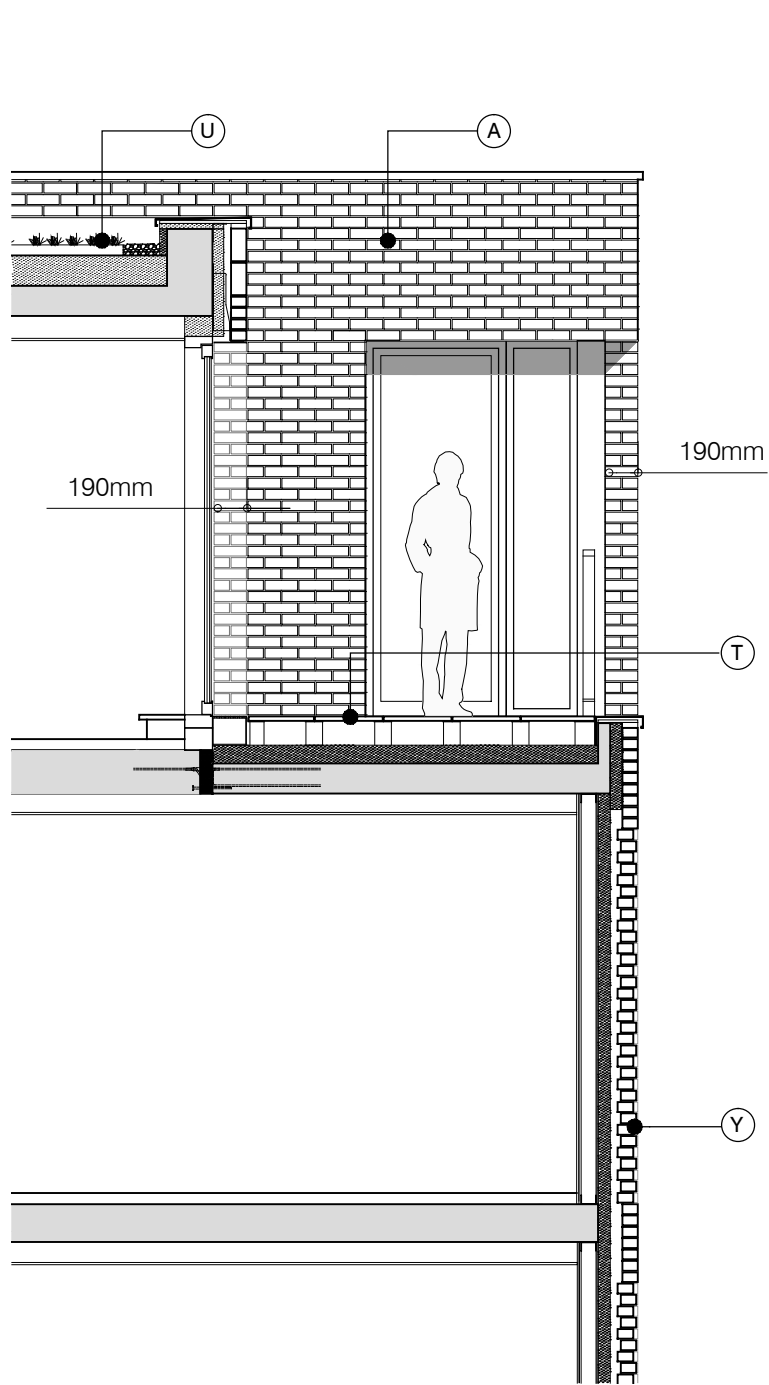
drawing status PLANNING

Diespoker Wharf
38 Graham Street
London N1 8JX
t: 020 7336 7777 w: www.ptea.co.uk
f: 020 7336 0770 e: forename.surname@ptea.co.uk

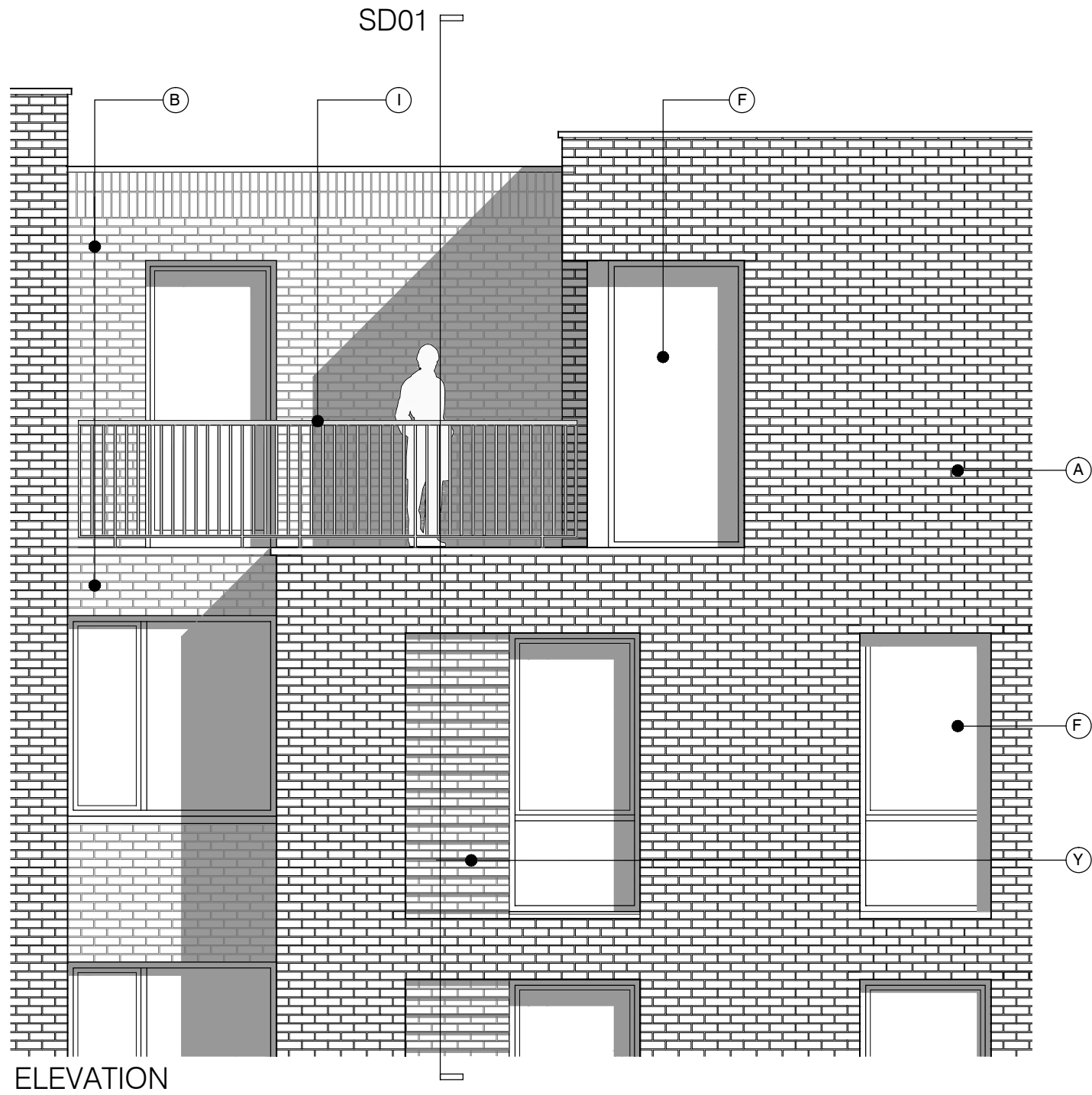
PTEa
POLLARD THOMAS EDWARDS architects

project ABBEY AREA REGENERATION-PHASE 1 LONDON job.no. 12_510 drawn EG audited DPD scale 1:50@A3 date JUL 13

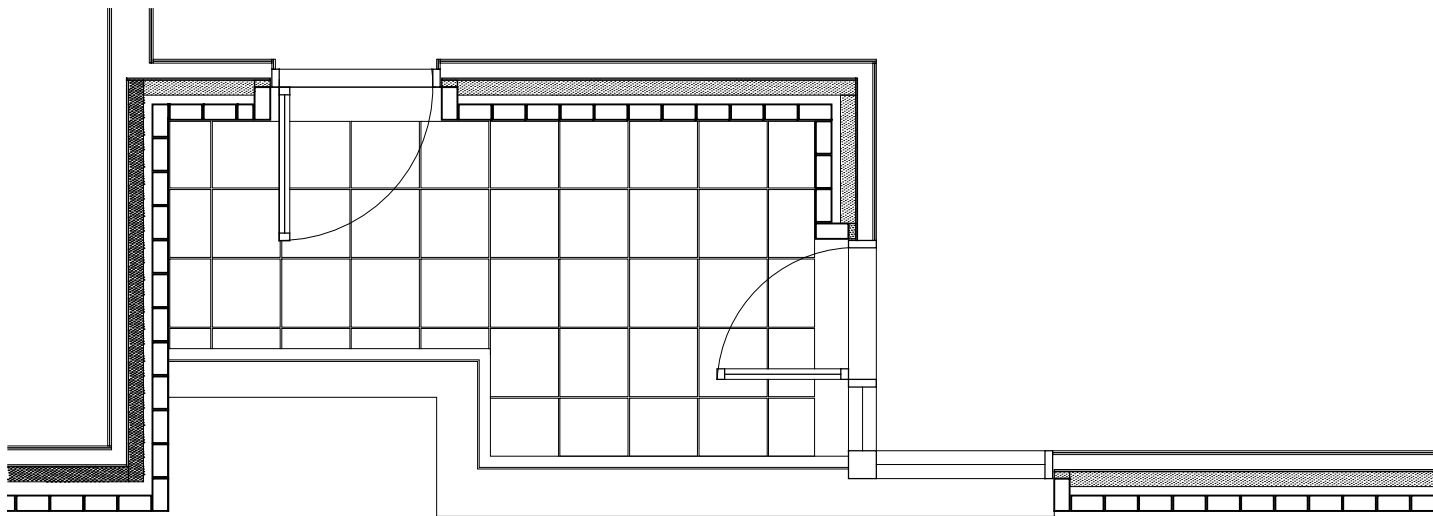
dwg title FRONT ENTRANCE - BLOCK C orig. no. 510_1_PL_404 rev D



SECTION DETAIL 01



ELEVATION



PLAN

MATERIAL KEY

A - Brick work type 1: Red brick, stretcher bond brickwork with Cemex London White mortar or similar. Openings to have a deep brick reveal (approx 190mm unless stated otherwise).

B - Brick work type 2: Reflective blue/purple brick, but darker than Type 1, stretcher bond brickwork with Cemex London White mortar or similar. Allow for darker mortar to recessed brick walls. Openings to have a deep brick reveal (approx 190mm unless stated otherwise).

F - Windows / doors: RAL colour finish aluminum framed double or triple glazed units (manufacturer to be agreed).

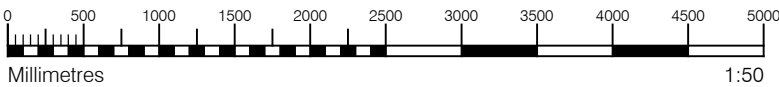
I - Metal Railing Balustrade: formed from PPC vertical flats (approx 50 x 12mm)

T - Terrace: with 50mm thick stone pavers (pietra serena sandstone or similar)

U - Roofs: Insulated extensive green biodiverse roof with parapet wall

Y - Brick work type 2: Slightly recessed brick wall with stepped brick coursing

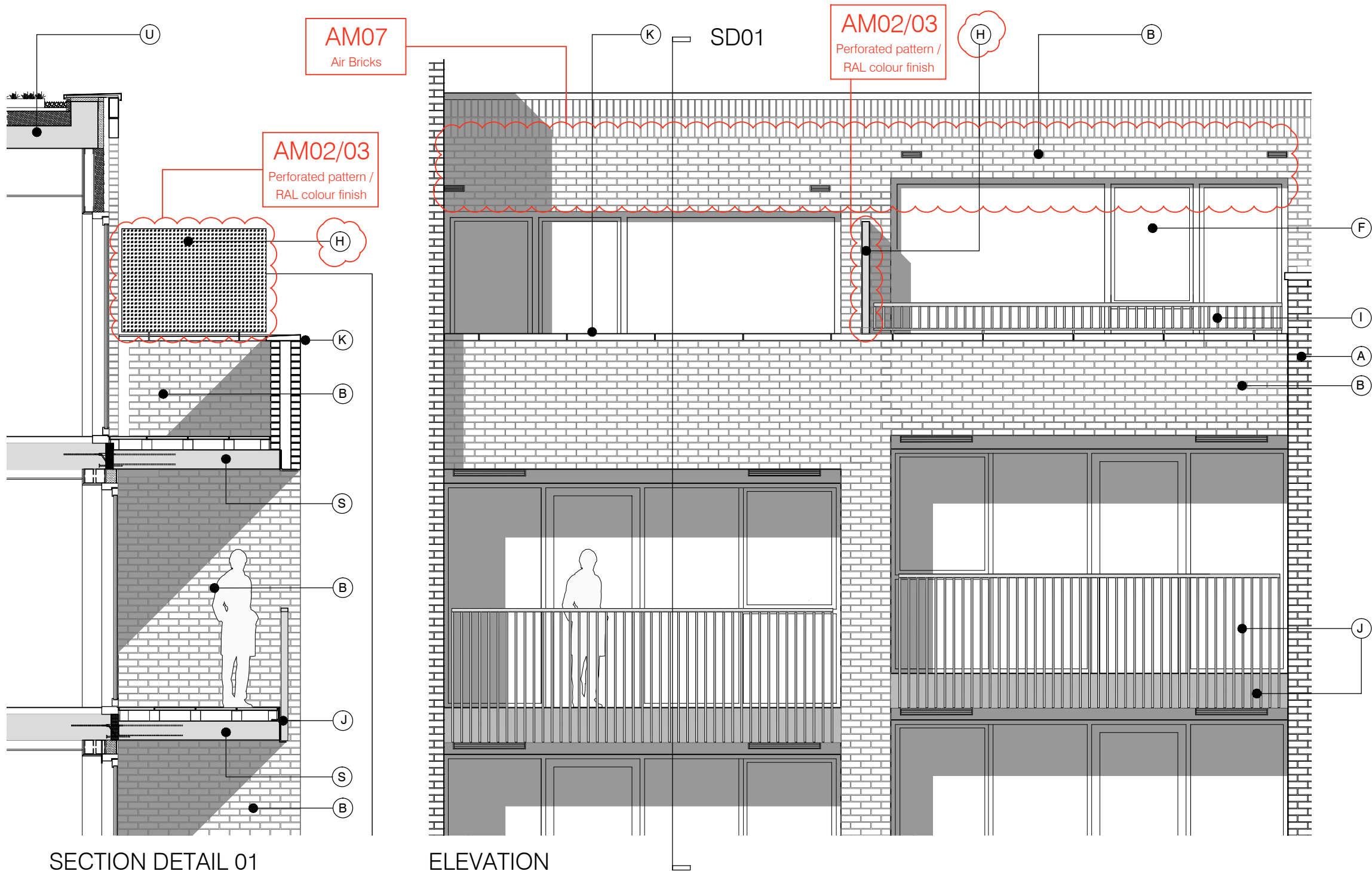
For specification, refer to drawing PL 001-Rev B included within this Section 73 application



S73 APPLICATION

C 28.04.17 Section 73 issued to planning.			DS	DPD
C 31.03.17 Amendment references added. Material key updated. Issued to Wates prior to planning submission.			DS	DB
B 21.06.16 Section 73 issued to planning.			EN	DPD
rev.	date	notes	drn	aud

PLANNING				
Diespoker Wharf 38 Graham Street London N1 8JX				
t: 020 7336 7777 w: www.ptea.co.uk f: 020 7336 0770 e: forename.surname@ptea.co.uk				
PTEa POLLARD THOMAS EDWARDS architects				
project ABBEY AREA REGENERATION-PHASE 1 LONDON	job.no. 12_510	drawn EG	audited DPD	scale 1:50@A3
date JUL 13				
dwg title 5TH FLOOR TERRACE - BLOCK B	orig. no. 510_1_PL_405	rev C		



MATERIAL KEY

A - Brick work type 1: Red brick, stretcher bond brickwork with Cemex London White mortar or similar. Openings to have a deep brick reveal (approx 190mm unless stated otherwise).

B - Brick work type 2: Reflective blue/purple brick, but darker than Type 1, stretcher bond brickwork with Cemex London White mortar or similar. Allow for darker mortar to recessed brick walls. Openings to have a deep brick reveal (approx 190mm unless stated otherwise).

F - Windows / doors: RAL colour finish aluminum framed double or triple glazed units (manufacturer to be agreed).

H - Perforated metal balustrade or privacy screen: perforated metal (RAL colour finish) supported off PPC coated frame with hidden fixings and minimal joints - allow for non-uniform setting out of perforations - details to be agreed

I - Metal Railing Balustrade: formed from PPC vertical flats (approx 50 x 12mm)

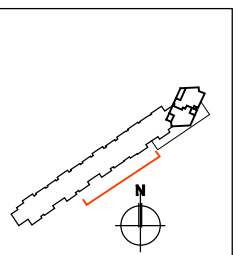
J - Metal Railing Balustrade: formed from PPC vertical flats (approx 50 x 12mm) extending to balcony soffit with metal plate fascia fixed to balcony edge

K - Precast concrete or stone coping to parapet wall - allow for reinforcement back to structure.

S - Balcony: Thermally broken in-situ cast concrete cantilevered balcony structure with 50mm thick stone pavers (pietra serena sandstone or similar)

U - Roofs: Insulated extensive green biodiverse roof with parapet wall

For specification, refer to drawing PL 001-Rev B included within this Section 73 application



S73 APPLICATION

C 28.04.17 Section 73 issued to planning. DS DPD

C 31.03.17 Amendment references added. Material key updated. Issued to Wates prior to planning submission. DS DB

B 21.06.16 Section 73 issued to planning. rev. date notes EN DPD
drn aud

PLANNING

Diespoker Wharf
38 Graham Street
London N1 8JX

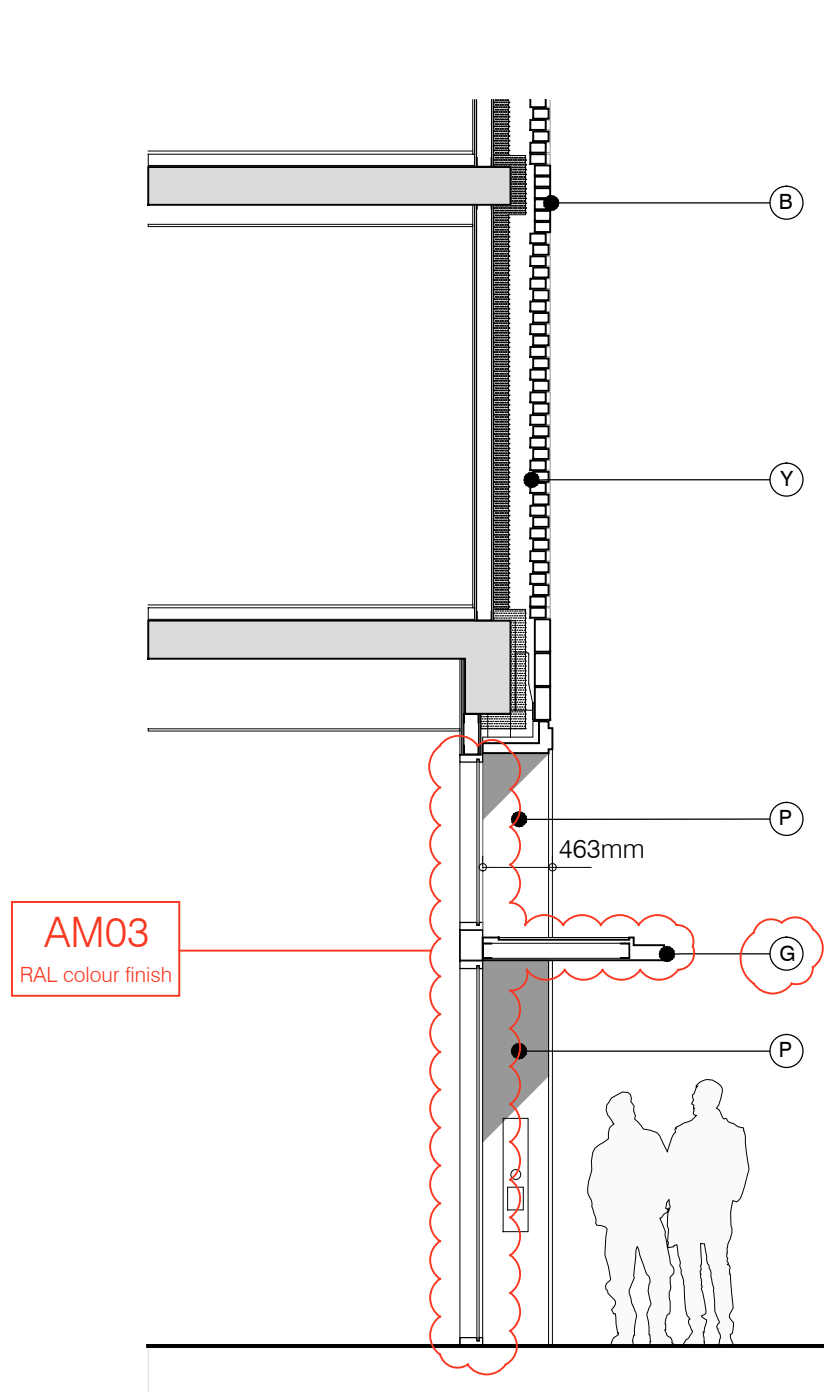
t: 020 7336 7777 w: www.ptea.co.uk
f: 020 7336 0770 e: forename.surname@ptea.co.uk

PTEa
POLLARD THOMAS EDWARDS architects

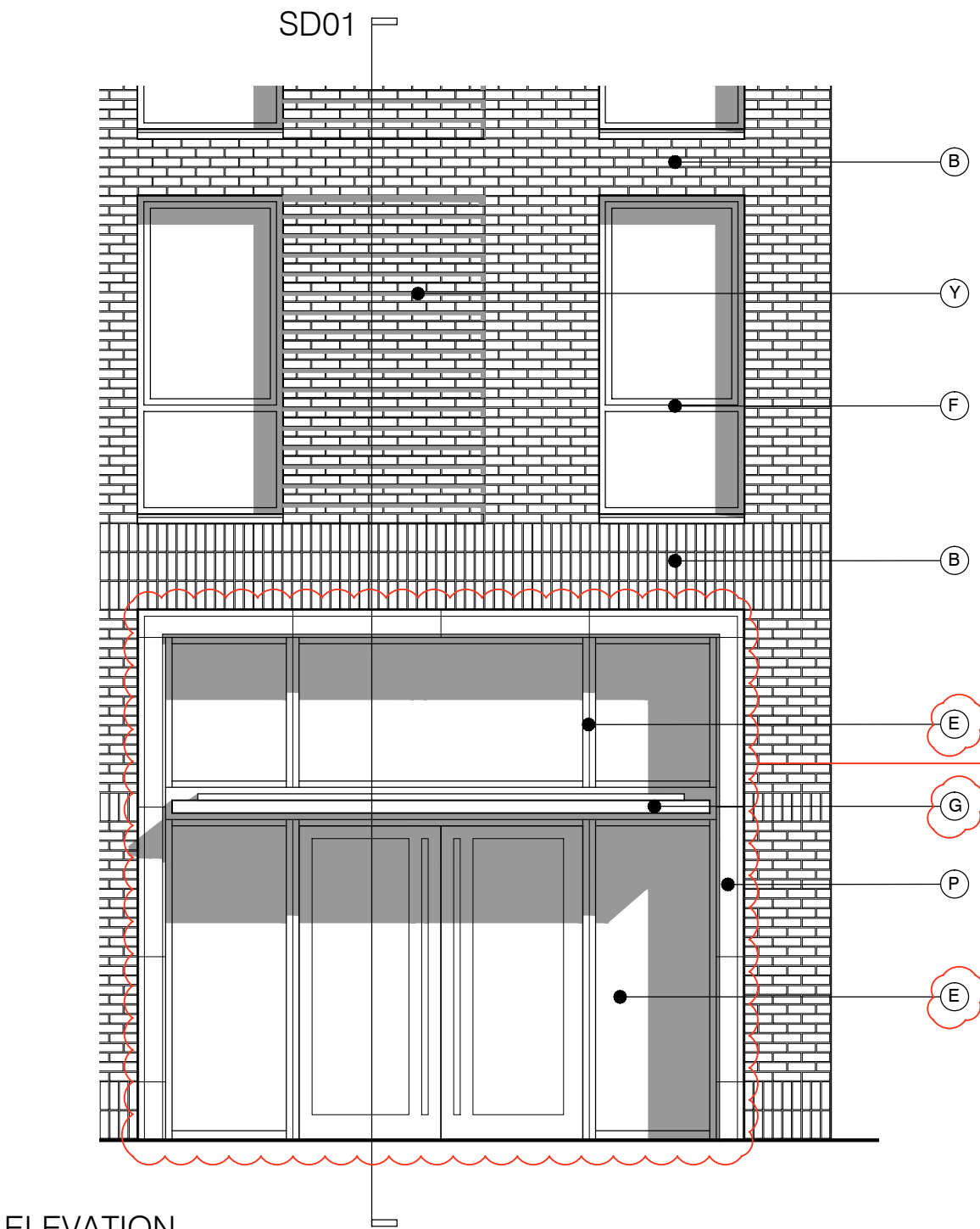
project: ABBEY AREA REGENERATION-PHASE 1 job.no.: 12_510 drawn: EG audited: DPD scale: 1:50@A3 date: JUL 13

dwg title: INSET BALCONIES - SOUTH ELEVATION orig. no.: 510_1_PL_407 rev: C

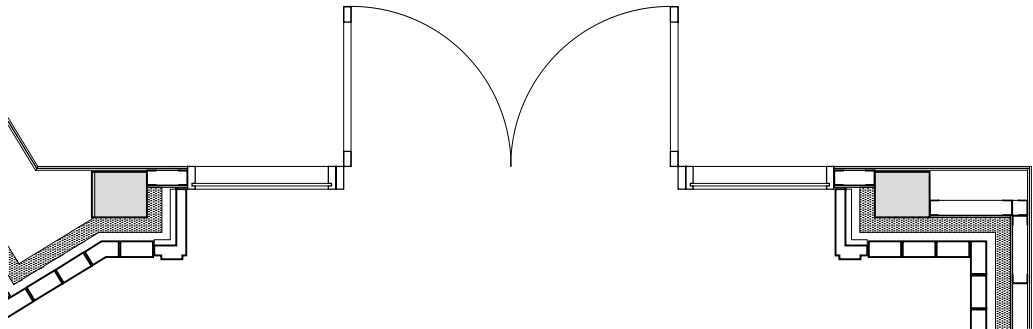
PLAN



SECTION DETAIL 01



ELEVATION



PLAN

MATERIAL KEY

B - Brick work type 2: Reflective blue/purple brick, but darker than Type 1, stretcher bond brickwork with Cemex London White mortar or similar. Allow for darker mortar to recessed brick walls. Openings to have a deep brick reveal (approx 190mm unless stated otherwise).

D - Metal panel: RAL colour finish panels with hidden fixings and minimal joints.

E - Shop front frameless glass curtain walling with 75mm aluminum capping at base, RAL colour finish aluminum framed double or triple glazed doors to match.

F - Windows / doors: RAL colour finish aluminum framed double or triple glazed units (manufacturer to be agreed).

G - Canopies: Pre-formed metal boxed canopy in RAL colour finish with hidden structure and integral lighting.

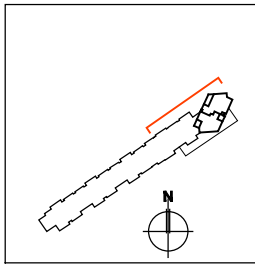
P - Reconstituted Stone on fixing ancon bracket to form architrave detail to concierge/supermarket/retail entrances

Y - Brick work type 2: Slightly recessed brick wall with stepped brick coursing

For specification, refer to drawing PL 001-Rev B included within this Section 73 application

AM03

RAL colour finish



S73 APPLICATION

C 28.04.17 Section 73 issued to planning.

DS DPD

C 31.03.17 Amendment references added. Material key updated. Issued to Wates prior to planning submission.

DS DB

B 21.06.16 Section 73 issued to planning.

EN DPD

rev. date notes

drn aud

drawing status

PLANNING

Diespoker Wharf
38 Graham Street
London N1 8JX

t: 020 7336 7777
f: 020 7336 0770

w: www.ptea.co.uk
e: forename.surname@ptea.co.uk

PTEa
POLLARD THOMAS EDWARDS architects

project
ABBEY AREA REGENERATION-PHASE 1
LONDON

job.no.
12_510

drawn
EG

audited
DPD

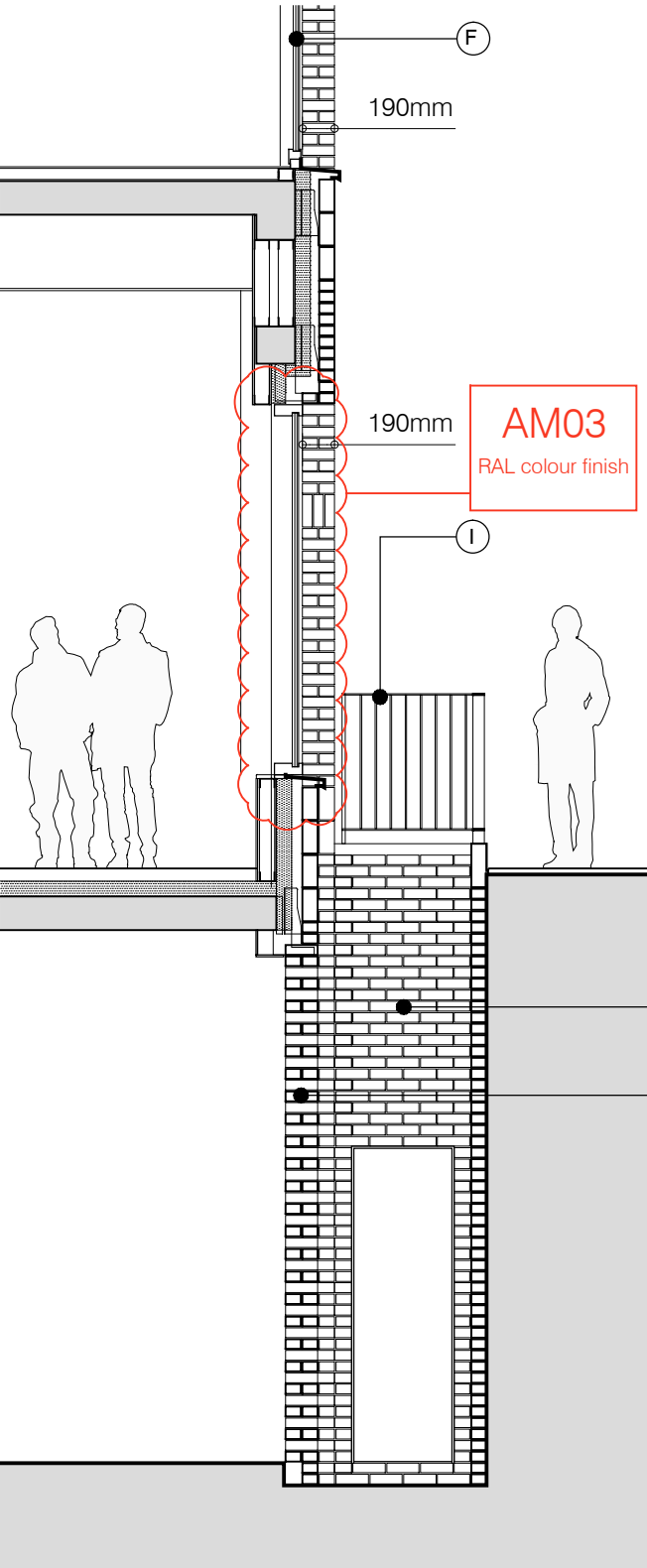
scale
1:50@A3

date
JUL 13

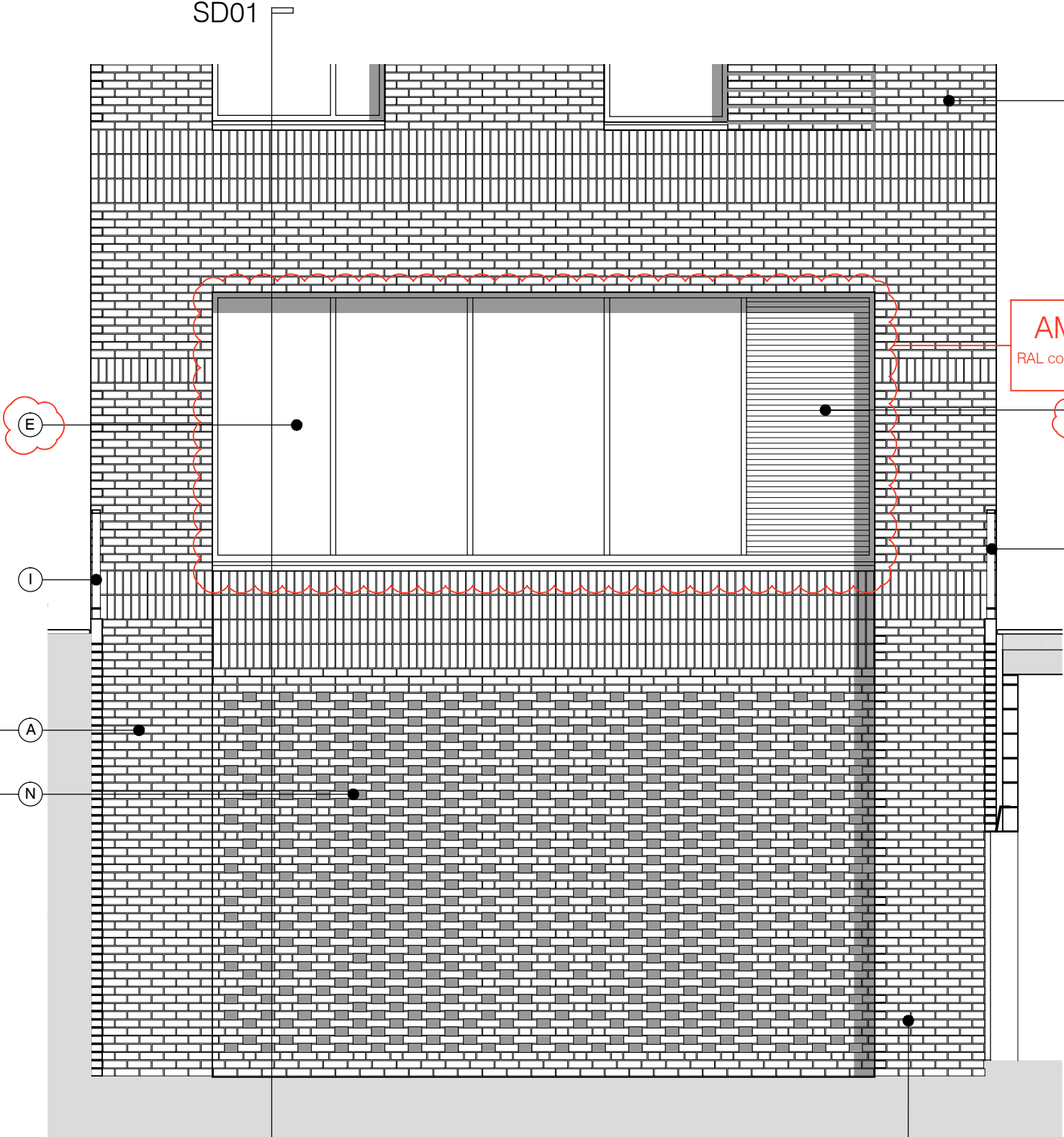
dwg title
CONCIERGE

orig. no.
510_1_PL_409

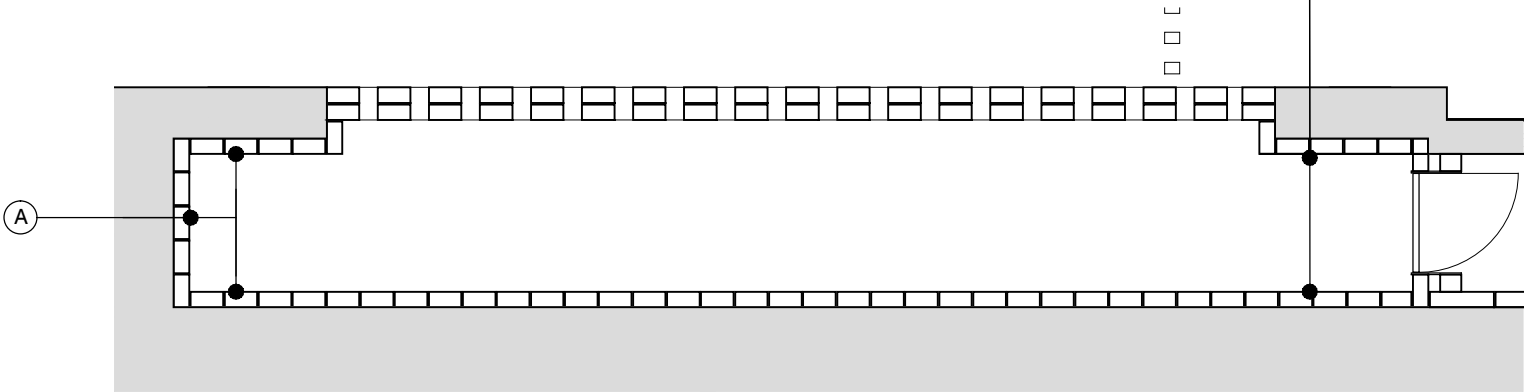
rev
C



SECTION DETAIL 01



ELEVATION

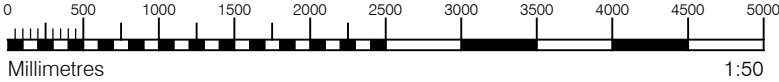


PLAN

MATERIAL KEY

- A** - Brick work type 1: Red brick, stretcher bond brickwork with Cemex London White mortar or similar. Openings to have a deep brick reveal (approx 190mm unless stated otherwise).
- B** - Brick work type 2: Reflective blue/purple brick, but darker than Type 1, stretcher bond brickwork with Cemex London White mortar or similar. Allow for darker mortar to recessed brick walls. Openings to have a deep brick reveal (approx 190mm unless stated otherwise).
- E** - Shop front frameless glass curtain walling with 75mm aluminum capping at base, RAL colour finish aluminum framed double or triple glazed doors to match. Louvred panels to be same finish.
- F** - Windows / doors: RAL colour finish aluminum framed double or triple glazed units (manufacturer to be agreed).
- I** - Metal Railing Balustrade: formed from PPC vertical flats (approx 50 x 12mm)
- N** - Hit and miss brickwork wall to basement cycle store - free area to meet ventilation requirements to basement
- Y** - Brick work type 2: Slightly recessed brick wall with stepped brick coursing

For specification, refer to drawing PL 001-Rev B included within this Section 73 application



S73 APPLICATION

C 28.04.17 Section 73 issued to planning. DS DPD

C 31.03.17 Amendment references added. Material key updated. Issued to Wates prior to planning submission. DS DB

B 21.06.16 Section 73 issued to planning. EN DPD

rev. date notes drn aud

drawing status

PLANNING

Diespoker Wharf
38 Graham Street
London N1 8JX

t: 020 7336 7777
f: 020 7336 0770

w: www.ptea.co.uk
e: forename.surname@ptea.co.uk

PTEa
POLLARD THOMAS EDWARDS architects

project: ABBEY AREA REGENERATION-PHASE 1 LONDON job.no: 12_510 drawn: EG audited: DPD scale: 1:50@A3 date: JUL 13

dwg title: VENTILATION VOID orig. no: 510_1_PL_410 rev: C