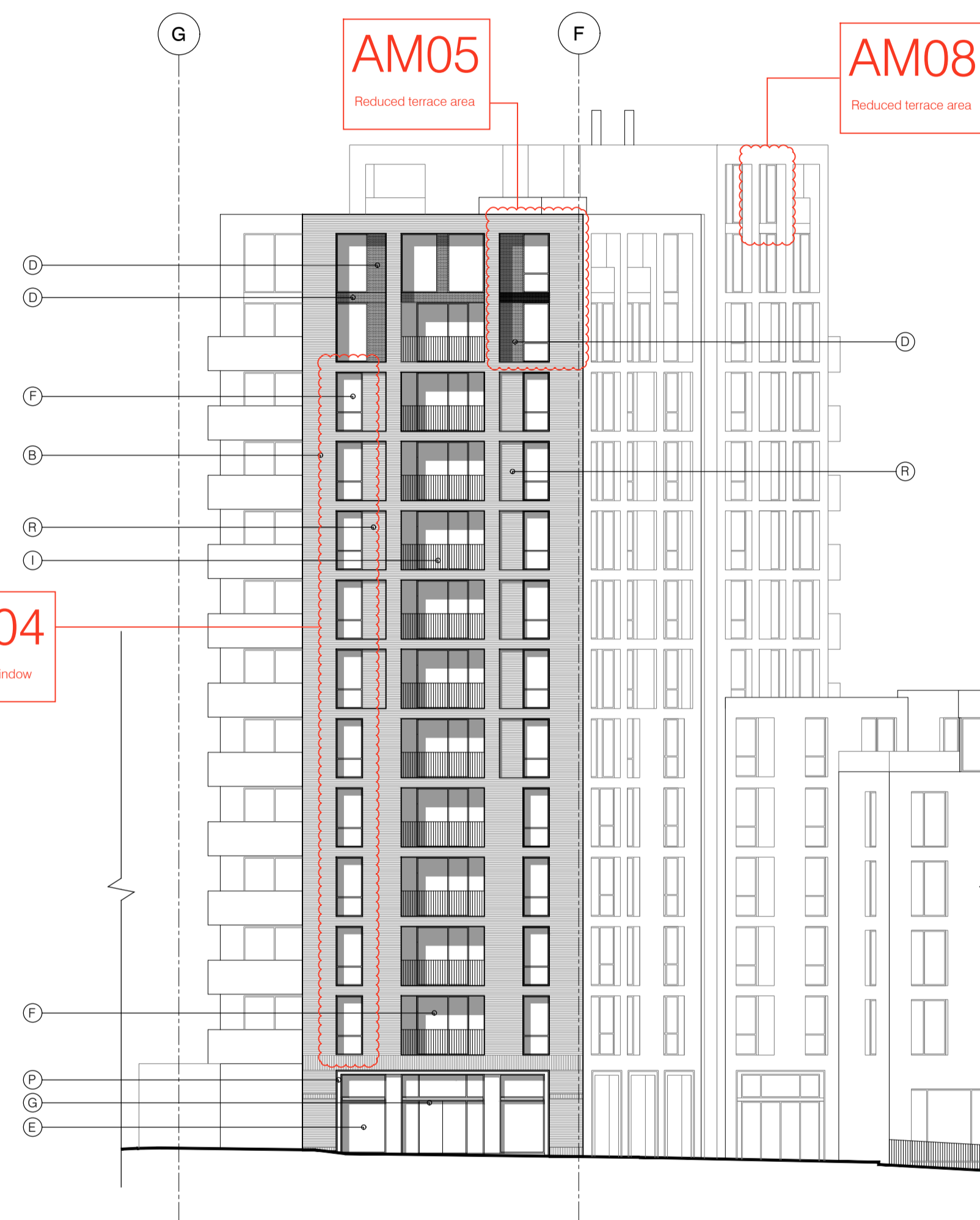
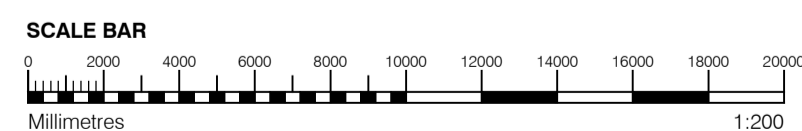


1 LANDMARK BUILDING TRUE ELEVATION- NORTH  
1:200



2 LANDMARK BUILDING TRUE ELEVATION- EAST  
1:200



**GENERAL NOTES**

- This drawing is copyright of PTE architects
- Use figured dimensions only. DO NOT SCALE.
- All dimensions are in millimetres unless noted otherwise
- All levels are in metres above ordnance datum unless noted otherwise
- This drawing must be read in conjunction with all other relevant drawings and specifications from the Architect and other consultants

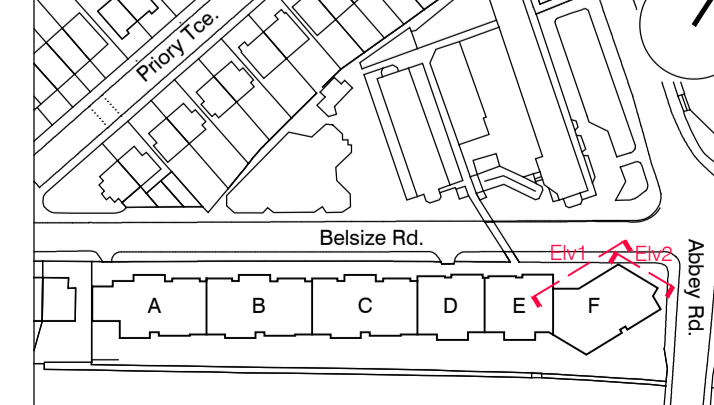
**NOTES**

- All setting out to be confirmed on site prior to construction - any discrepancy must be immediately reported to the Architect.

**MATERIAL KEY**

- A** - Brick work type 1: Red Brick, stretcher bond with light colour mortar. Openings to have a deep brick reveal (approx 190mm unless stated otherwise).
- B** - Brick work type 2: Reflective blue/purple Brick, stretcher bond with dark grey mortar. Openings to have a deep brick reveal (approx 190mm unless stated otherwise).
- C** - Brick work type 3: White glazed brick, stack bonded with white colour mortar, to Block F recessed balconies.
- D** - Metal panel: bronze effect panels with hidden fixings and minimal joints.
- E** - Shop front frameless glass curtain walling with 75mm aluminum capping at base, bronze effect aluminum framed double or triple glazed doors to match.
- F** - Windows / doors: PPC aluminum framed double or triple glazed units (manufacturer to be agreed).
- G** - Canopies: Pre-formed metal boxed canopy in bronze metallic finish with hidden structure and integral lighting.
- H** - Perforated metal balustrade or privacy screen: perforated metal (bronze metallic finish) supported off PPC coated frame with hidden fixings and minimal joints - allow for non-uniform setting out of perforations - details to be agreed.
- I** - Metal Railing Balustrade: formed from PPC vertical flats (approx 50 x 12mm).
- J** - Metal Railing Balustrade: formed from PPC vertical flats (approx 50 x 12mm) extending to balcony soffit with metal plate fascia fixed to balcony edge.
- K** - Precast concrete or stone coping to parapet wall - allow for reinforcement back to structure.
- L** - Glass balustrade: frameless glass with no visible fixings.
- M** - Brick work type 4: Green Glazed brickwork, stack bonded to residential entrances
- N** - Hit and miss brickwork wall to basement cycle store - free area to meet ventilation requirements to basement.
- O** - 1.2 m high Fagus sylvatica (beech) instant hedge planted in a double staggered row.
- P** - Reconstituted Stone on fixing ancon bracket to form architrave detail to concierge/supermarket/retail entrances.
- Q** - Aluminium PPC louvred doors/panels to refuse store/car ramp/fire exits/substation/vent intake or exhaust locations.
- R** - Brick work type 2: Slightly recessed brick wall with stepped brick coursing.
- S** - Close boarded timber fence to meet Acoustic requirements.
- T** - Brick work type 5: Reduced specification / off-shade brick wall forming retaining structure.

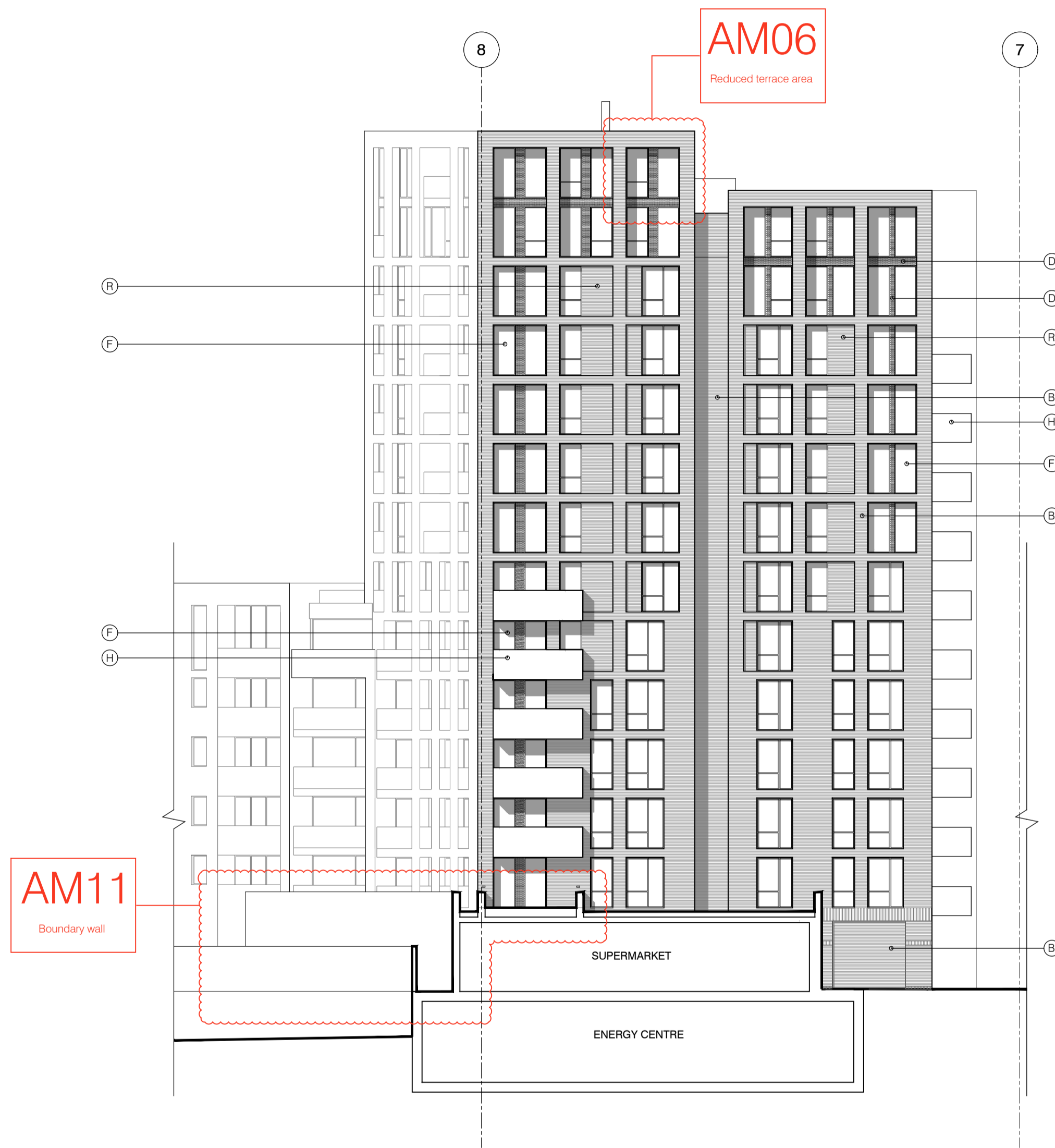
**KEY PLAN**



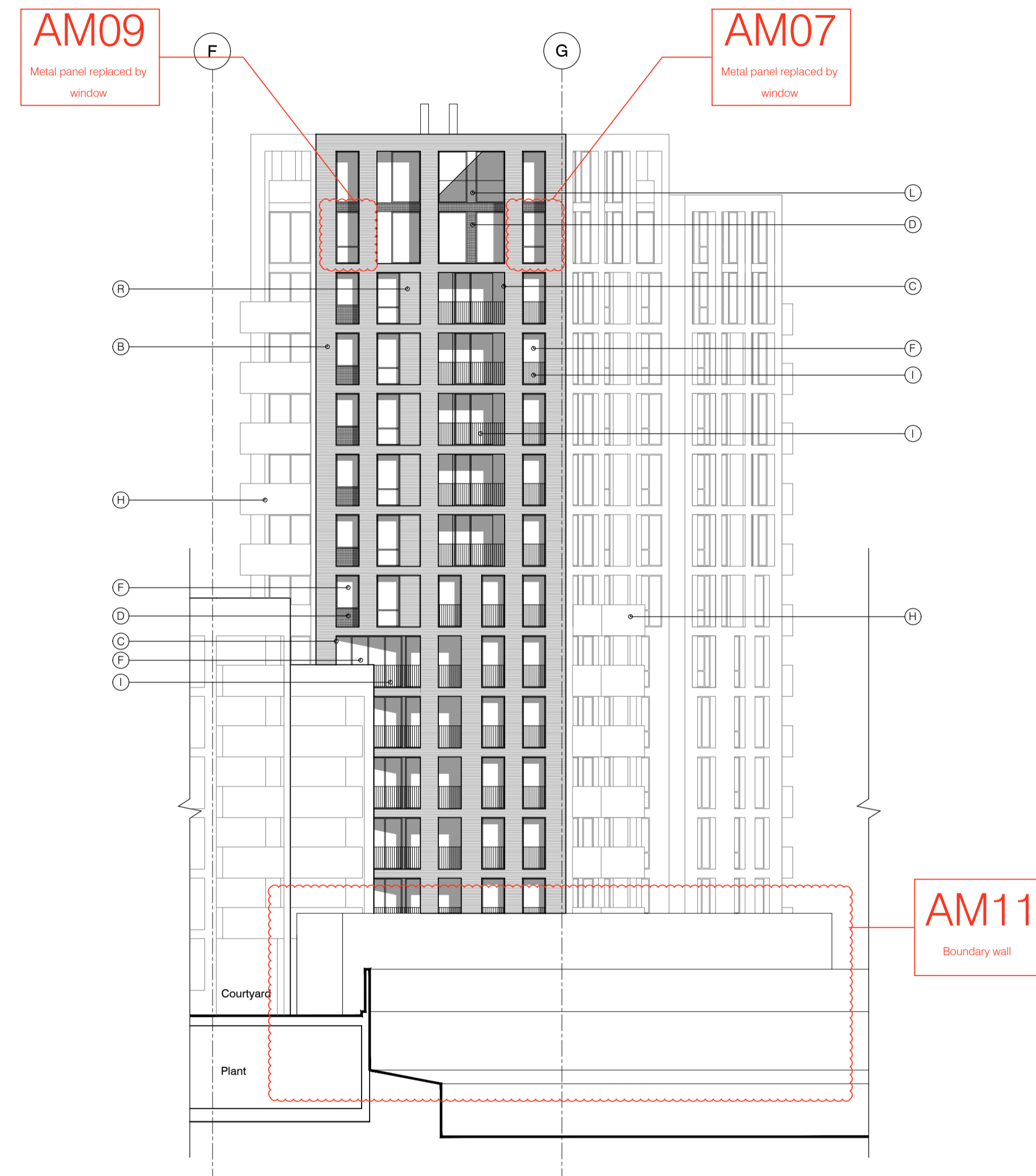
SECTION 73 APPLICATION			
E	21.06.16	Amendment references added. Material Key updated. Issued to planning	EN DPD
D	15.04.16	Amendment references added. Material Key updated. Issued to CBRE	DPD DB
C	18.12.15	Amendment references added. Issued to CBRE	BM DPD
B	08.10.13	Issue for information	BM DPD
A	04.10.13	Block F Fire exit elevation	BM DPD
rev	date	description	dwn aud

**PLANNING**

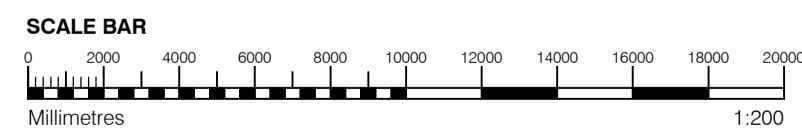
Diespeker Wharf 38 Graham Street London N1 8JX t: 020 7336 7777 w: www.ptea.co.uk f: 020 7336 0770 e: forename.surname@ptea.co.uk			
project: ABBEY AREA REGENERATION-PHASE 1 LONDON	job no: 12_510	drawn: BM	audited: DPD
scale: 1:200@A1	date: JUL 13	title: GENERAL ARRANGEMENT LANDMARK BUILDING TRUE ELEVATION-NORTH & EAST	fig. no: 510_1_PL_303
rev: E			



1 LANDMARK BUILDING TRUE ELEVATION- SOUTH  
1:200



2 LANDMARK BUILDING TRUE ELEVATION- WEST  
1:200



**GENERAL NOTES**

- This drawing is copyright of PTE architects
- Use figured dimensions only. DO NOT SCALE.
- All dimensions are in millimetres unless noted otherwise
- All levels are in metres above ordnance datum unless noted otherwise
- This drawing must be read in conjunction with all other relevant drawings and specifications from the Architect and other consultants

**NOTES**

- All setting out to be confirmed on site prior to construction - any discrepancy must be immediately reported to the Architect.

**MATERIAL KEY**

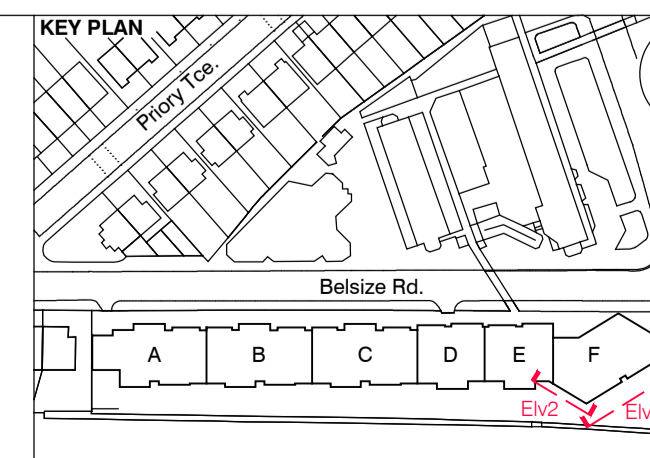
- A** - Brick work type 1: Red Brick, stretcher bond with light colour mortar. Openings to have a deep brick reveal (approx 190mm unless stated otherwise).
- B** - Brick work type 2: Reflective blue/purple Brick, stretcher bond with dark grey mortar. Openings to have a deep brick reveal (approx 190mm unless stated otherwise).
- C** - Brick work type 3: White glazed brick, stack bonded with white colour mortar, to Block F recessed balconies.
- D** - Metal panel: bronze effect panels with hidden fixings and minimal joints.

- E** - Shop front frameless glass curtain walling with 75mm aluminum capping at base, bronze effect aluminum framed double or triple glazed doors to match.
- F** - Windows / doors: PPC aluminum framed double or triple glazed units (manufacturer to be agreed).
- G** - Canopies: Pre-formed metal boxed canopy in bronze metallic finish with hidden structure and integral lighting.
- H** - Perforated metal balustrade or privacy screen: perforated metal (bronze metallic finish) supported off PPC coated frame with hidden fixings and minimal joints - allow for non-uniform setting out of perforations - details to be agreed.

- I** - Metal Railing Balustrade: formed from PPC vertical flats (approx 50 x 12mm).
- J** - Metal Railing Balustrade: formed from PPC vertical flats (approx 50 x 12mm) extending to balcony soffit with metal plate fascia fixed to balcony edge.
- K** - Precast concrete or stone coping to parapet wall - allow for reinforcement back to structure.
- L** - Glass balustrade: frameless glass with no visible fixings.
- M** - Brick work type 4: Green Glazed brickwork, stack bonded to residential entrances

- N** - Hit and miss brickwork wall to basement cycle store - free area to meet ventilation requirements to basement.
- O** - 1.2 m high Fagus sylvatica (beech) instant hedge planted in a double staggered row.
- P** - Reconstituted Stone on fixing ancon bracket to form architrave detail to concierge/supermarket/retail entrances.
- Q** - Aluminium PPC covered doors/panels to refuse store/car park ramp/fire exits/substation/vent intake or exhaust locations.

- R** - Brick work type 2: Slightly recessed brick wall with stepped brick coursing.
- S** - Close boarded timber fence to meet Acoustic requirements.
- T** - Brick work type 5: Reduced specification / off-shade brick wall forming retaining structure.



S73 APPLICATION				
C	21.06.16	Amendment references added. Material Key updated. Issued to planning	EN	DPD
B	15.04.16	Amendment references added. Material Key updated. Issued to CBRE	DPD	DB
A	18.12.15	Amendment references added. Issued to CBRE	BM	DPD
rev.	date	description	dm	aud

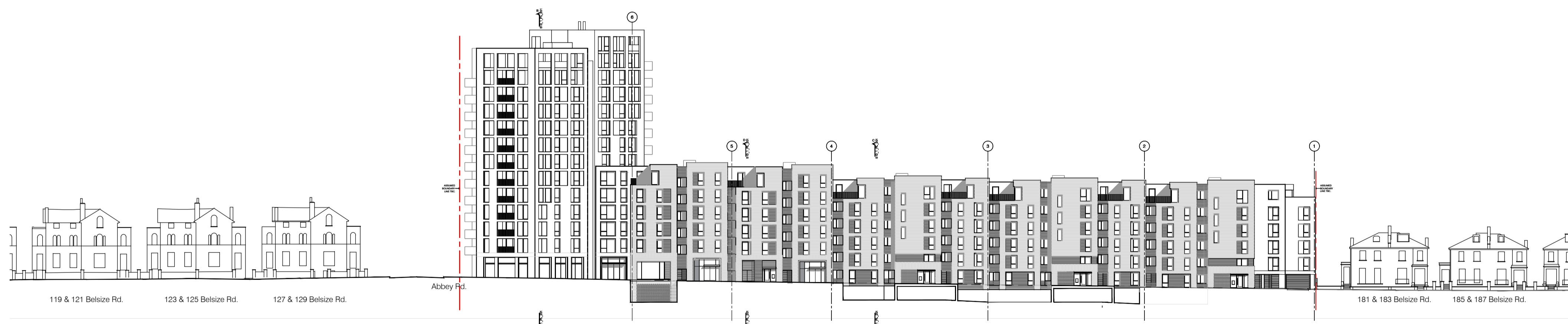
**PLANNING**

Diespeker Wharf  
38 Graham Street  
London N1 8JX  
t: 020 7336 7777 w: www.ptea.co.uk  
f: 020 7336 0770 e: forename.surname@ptea.co.uk

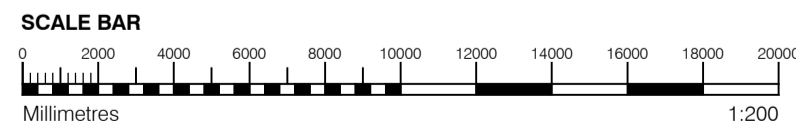


project	ABBEY AREA REGENERATION-PHASE 1	job no.	12_510	drawn	LG	audited	DPD	scale	1:200@A1	date	JUL 13
client	GENERAL ARRANGEMENT	drawing title	LANDMARK BUILDING TRUE ELEVATION-SOUTH & WEST	fig. no.	510_1_PL_304	rev	C				





2 NORTH SITE ELEVATION  
1:500



**GENERAL NOTES**

- This drawing is copyright of PTE architects
- Use figured dimensions only. DO NOT SCALE.
- All dimensions are in millimetres unless noted otherwise
- All levels are in metres above ordnance datum unless noted otherwise
- This drawing must be read in conjunction with all other relevant drawings and specifications from the Architect and other consultants

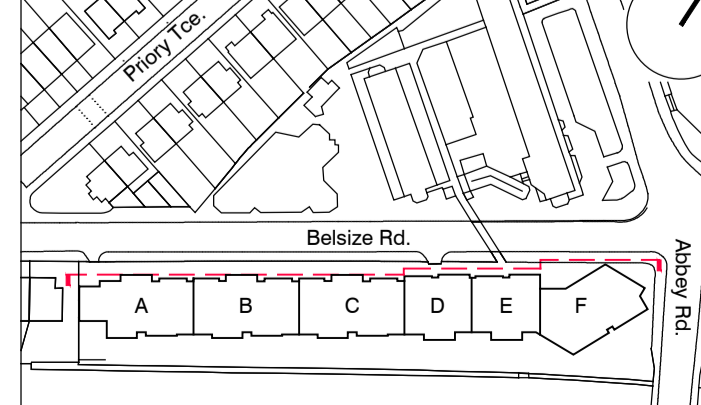
**NOTES**

- All setting out to be confirmed on site prior to construction - any discrepancy must be immediately reported to the Architect.

**MATERIAL KEY**

- A** - Brick work type 1: Red Brick, stretcher bond with light colour mortar. Openings to have a deep brick reveal (approx. 190mm unless stated otherwise).
- B** - Brick work type 2: Reflective blue/purple Brick, stretcher bond with dark grey mortar. Openings to have a deep brick reveal (approx. 190mm unless stated otherwise).
- C** - Brick work type 3: White glazed brick, stack bonded with white colour mortar, to Block F recessed balconies.
- D** - Metal panel: bronze effect panels with hidden fixings and minimal joints.
- E** - Shop front frameless glass curtain walling with 75mm aluminium capping at base, bronze effect aluminium framed double or triple glazed doors to match.
- F** - Windows / doors: PPC aluminium framed double or triple glazed units (manufacturer to be agreed).
- G** - Canopies: Pre-formed metal boxed canopy in bronze metallic finish with hidden structure and integral lighting.
- H** - Perforated metal balustrade or privacy screen: perforated metal (bronze metallic finish) supported off PPC coated frame with hidden fixings and minimal joints - allow for non-uniform setting out of perforations - details to be agreed.
- I** - Metal Railing Balustrade: formed from PPC vertical flats (approx 50 x 12mm).
- J** - Metal Railing Balustrade: formed from PPC vertical flats (approx 50 x 12mm) extending to balcony soffit with metal plate fascia fixed to balcony edge.
- K** - Precast concrete or stone coping to parapet wall - allow for reinforcement back to structure.
- L** - Glass balustrade: frameless glass with no visible fixings.
- M** - Brick work type 4: Green Glazed brickwork, stack bonded to residential entrances
- N** - Hit and miss brickwork wall to basement cycle store - free area to meet ventilation requirements to basement.
- O** - 1.2 m high Fagus sylvatica (beech) instant hedge planted in a double staggered row.
- P** - Reconstituted Stone on fixing ancon bracket to form architrave detail to concierge/supermarket/retail entrances.
- Q** - Aluminium PPC louvred doors/panels to refuse store/car park ramp/fire exits/substation/vent intake or exhaust locations.
- R** - Brick work type 5: Slightly recessed brick wall with stepped brick coursing.
- S** - Close boarded timber fence to meet Acoustic requirements.
- T** - Brick work type 5: Reduced specification / off-shade brick wall forming retaining structure.

**KEY PLAN**



SECTION 73 APPLICATION			
E	21.06.16	Amendment references added. Material Key updated. Issued to planning	EN DPD
D	15.04.16	Amendment references added. Material Key updated. Issued to CBRE	DPD DB
C	18.12.15	Amendment references added. Issued to CBRE	BM DPD
B	04.10.13	Issue for information	BM DPD
A	02.09.13	Drawing amended and issued to design team for comment.	RL DPD

**PLANNING**

Dispeker Wharf  
38 Graham Street  
London N1 8JX

t: 020 7336 7777 w: www.ptea.co.uk  
f: 020 7336 0770 e: forename.surname@ptea.co.uk

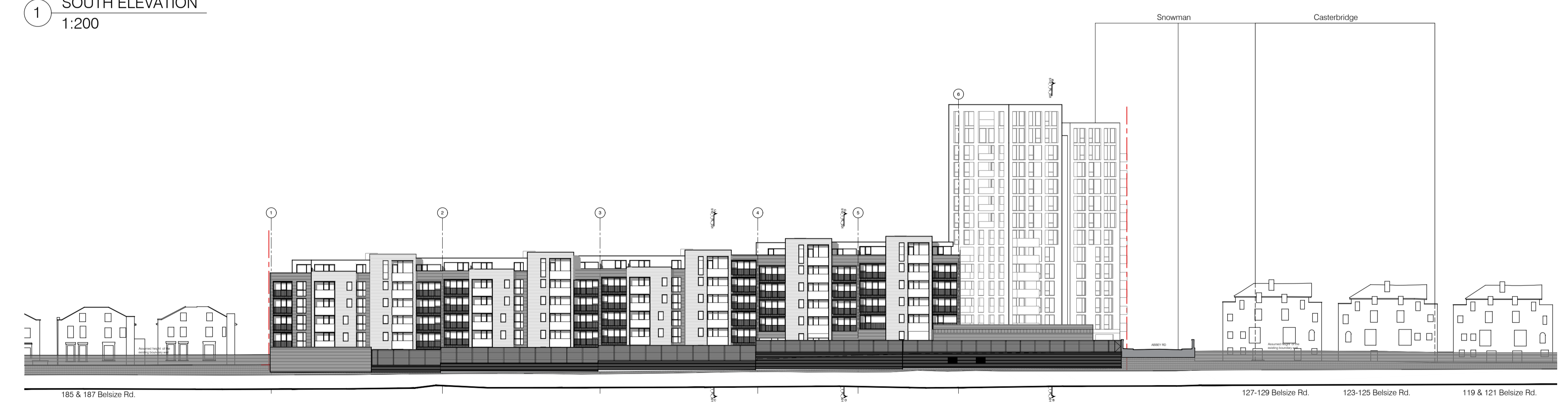
**PTEa**  
POLLARD THOMAS EDWARDS architects

project	ABBEY AREA REGENERATION-PHASE 1	job no.	12_510	drawn	LG	audited	DPD	scale	1:200@A1	date	JUL 13
design title	GENERAL ARRANGEMENT NORTH & NORTH SITE ELEVATION through voids	fig. no.	510_1_PL_305	rev							E

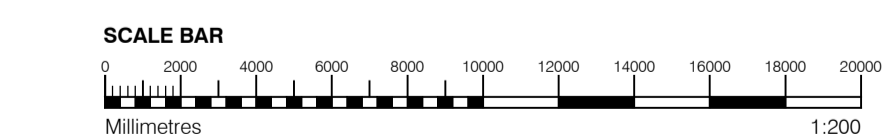




1 SOUTH ELEVATION  
1:200



2 SOUTH SITE ELEVATION  
1:500



**GENERAL NOTES**

- This drawing is copyright of PTE architects
- Use figured dimensions only. DO NOT SCALE.
- All dimensions are in millimetres unless noted otherwise
- All levels are in metres above ordnance datum unless noted otherwise
- This drawing must be read in conjunction with all other relevant drawings and specifications from the Architect and other consultants

**NOTES**

- All setting out to be confirmed on site prior to construction - any discrepancy must be immediately reported to the Architect.

**MATERIAL KEY**

**A** - Brick work type 1: Red Brick, stretcher bond with light colour mortar. Openings to have a deep brick reveal (approx. 190mm unless stated otherwise).

**B** - Brick work type 2: Reflective blue/purple Brick, stretcher bond with dark grey mortar. Openings to have a deep brick reveal (approx. 190mm unless stated otherwise).

**C** - Brick work type 3: White glazed brick, stack bonded with white colour mortar, to Block F recessed balconies.

**D** - Metal panel: bronze effect panels with hidden fixings and minimal joints.

**E** - Shop front frameless glass curtain walling with 75mm aluminum capping at base, bronze effect aluminum framed double or triple glazed doors to match.

**F** - Windows / doors: PPC aluminum framed double or triple glazed units (manufacturer to be agreed).

**G** - Canopies: Pre-formed metal boxed canopy in bronze metallic finish with hidden structure and integral lighting.

**H** - Perforated metal balustrade or privacy screen: perforated metal (bronze metallic finish) supported off PPC coated frame with hidden fixings and minimal joints - allow for non-uniform setting out of perforations - details to be agreed.

**I** - Metal Railing Balustrade: formed from PPC vertical flats (approx 50 x 12mm).

**J** - Metal Railing Balustrade: formed from PPC vertical flats (approx 50 x 12mm) extending to balcony soffit with metal plate fascia fixed to balcony edge.

**K** - Precast concrete or stone coping to parapet wall - allow for reinforcement back to structure.

**L** - Glass balustrade: frameless glass with no visible fixings.

**M** - Brick work type 4: Green Glazed brickwork, stack bonded to residential entrances

**N** - Hit and miss brickwork wall to basement cycle store - free area to meet ventilation requirements to basement.

**O** - 1.2 m high Fagus sylvatica (beech) instant hedge planted in a double staggered row.

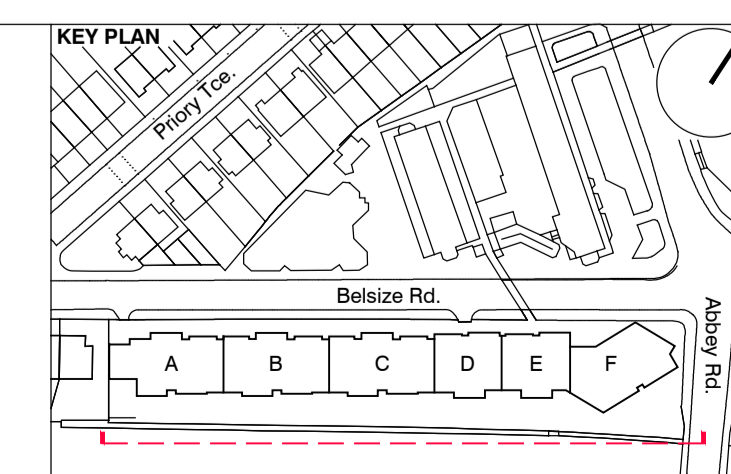
**P** - Reconstituted Stone on fixing ancon bracket to form architrave detail to concierge/supermarket/retail entrances.

**Q** - Aluminium PPC louvred doors/panels to refuse store/car park ramp/fire exits/substation/vent intake or exhaust locations.

**R** - Brick work type 2: Slightly recessed brick wall with stepped brick coursing.

**S** - Close boarded timber fence to meet Acoustic requirements.

**T** - Brick work type 5: Reduced specification / off-shade brick wall forming retaining structure.

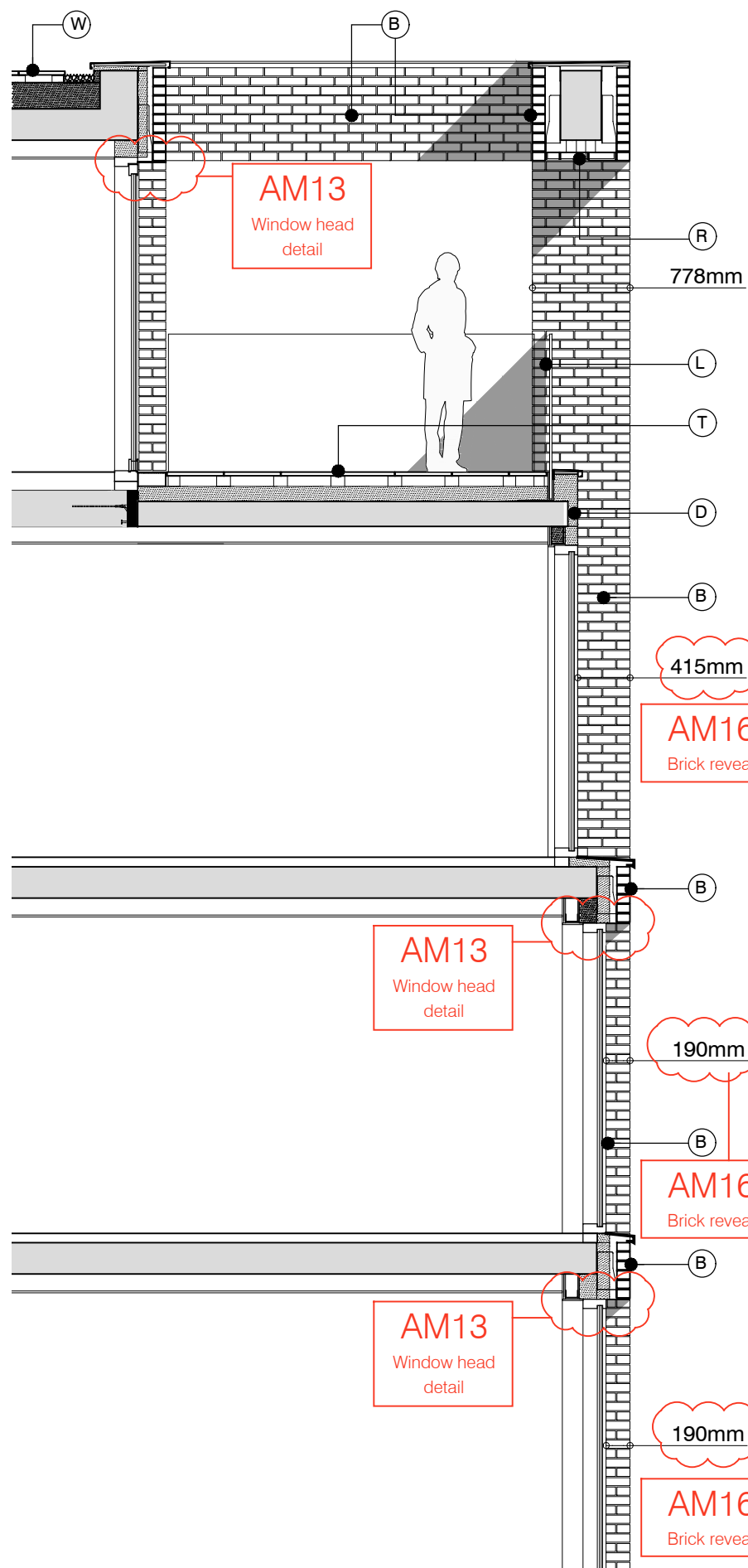


SECTION 73 APPLICATION			
C	21.06.16	Amendment references added. Material Key updated. Issued to planning	EN DPD
B	15.04.16	Amendment references added. Material Key updated. Issued to CBRE	DPD DB
A	18.12.15	Amendment references added. Issued to CBRE	BM DPD
rev.	date	description	dwn aud

PLANNING					
Diespeker Wharf 38 Graham Street London N1 8JX					
t: 020 7336 7777		w: www.ptea.co.uk		date	
f: 020 7336 0770		e: forename.surname@ptea.co.uk		JUL 13	
project	job no.	drawn	audited	scale	date
ABBEY AREA REGENERATION-PHASE 1	12_510	LG	DPD	1:200@A1	JUL 13
GENERAL ARRANGEMENT SOUTH & SOUTH SITE ELEVATIONS inc boundary				fig. no.	rev
				510_1_PL_306	C

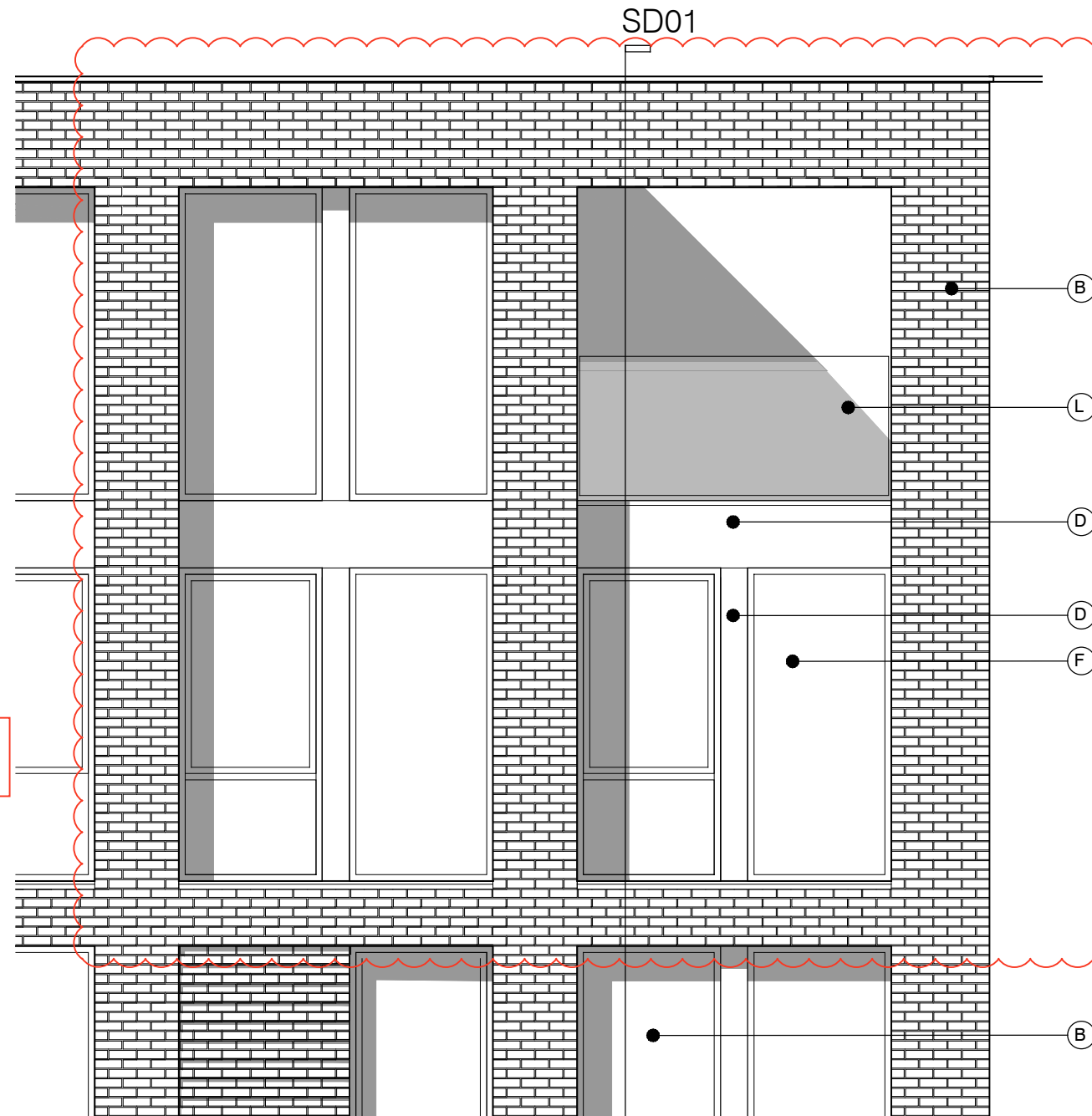
AM11  
Boundary wall

AM06  
Reduced terrace area

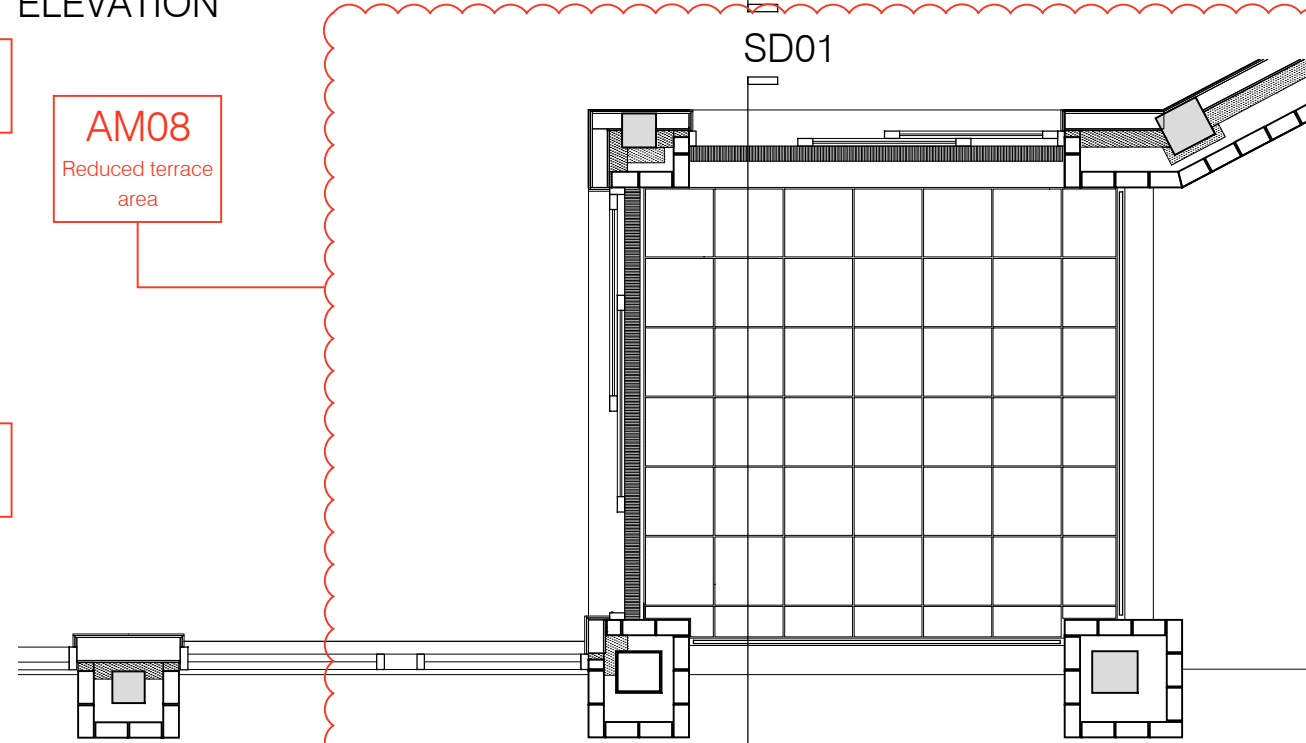


SECTION DETAIL 01

TERRACE PLAN



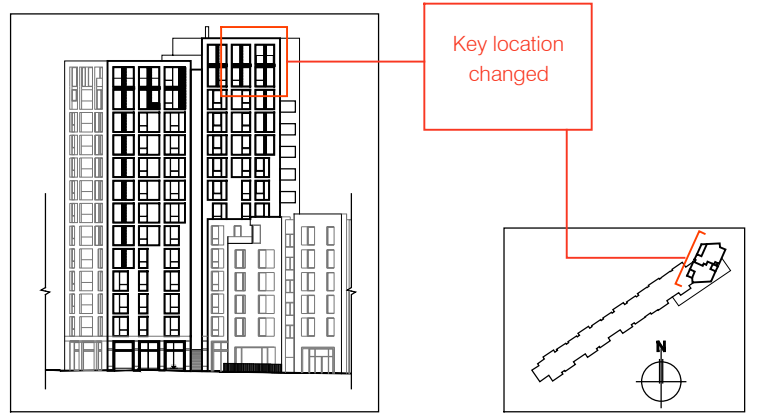
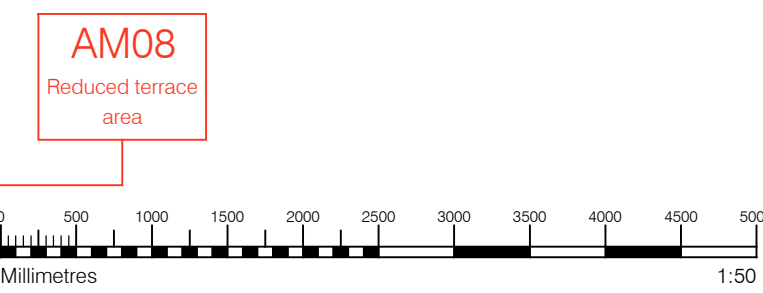
ELEVATION



**MATERIAL KEY**

- B** - Brick work type 2: stretcher bond brickwork. Openings to have a deep brick reveal (approx 190mm unless stated otherwise).
- D** - Metal panel: bronze effect panels with hidden fixings and minimal joints.
- F** - Windows / doors: bronze effect aluminum framed double or triple glazed units (manufacturer to be agreed).
- L** - Glass balustrade: frameless glass with no visible fixings.
- R** - Brick Soffit on fixing ancon bracket : Brick type to match facing brick
- T** - Terrace: with 50mm thick stone pavers (pietra serena sandstone or similar)
- W** - Roofs: Insulated flat roof with precast concrete pavers to Block F
- Y** - Brick work type 2: Slightly recessed brick wall with stepped brick coursing

For specification, refer to Condition 26 parts (a) + (b) decision notice dated 22 October 2015, ref: 2015/3878/p

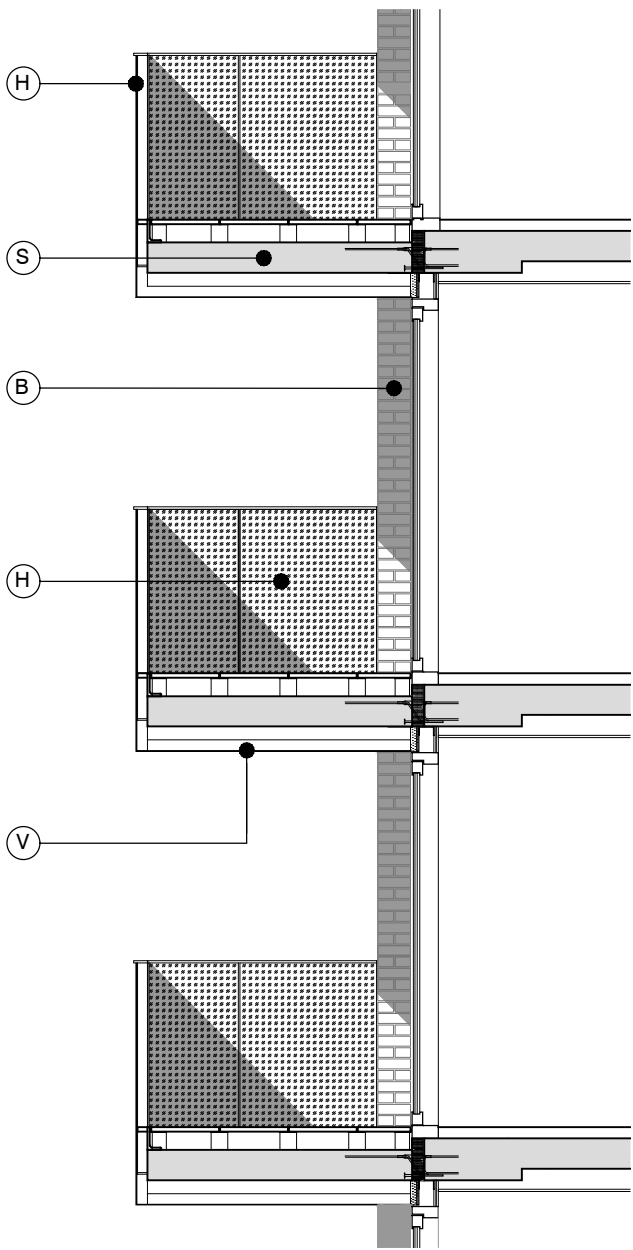


**S73 APPLICATION**

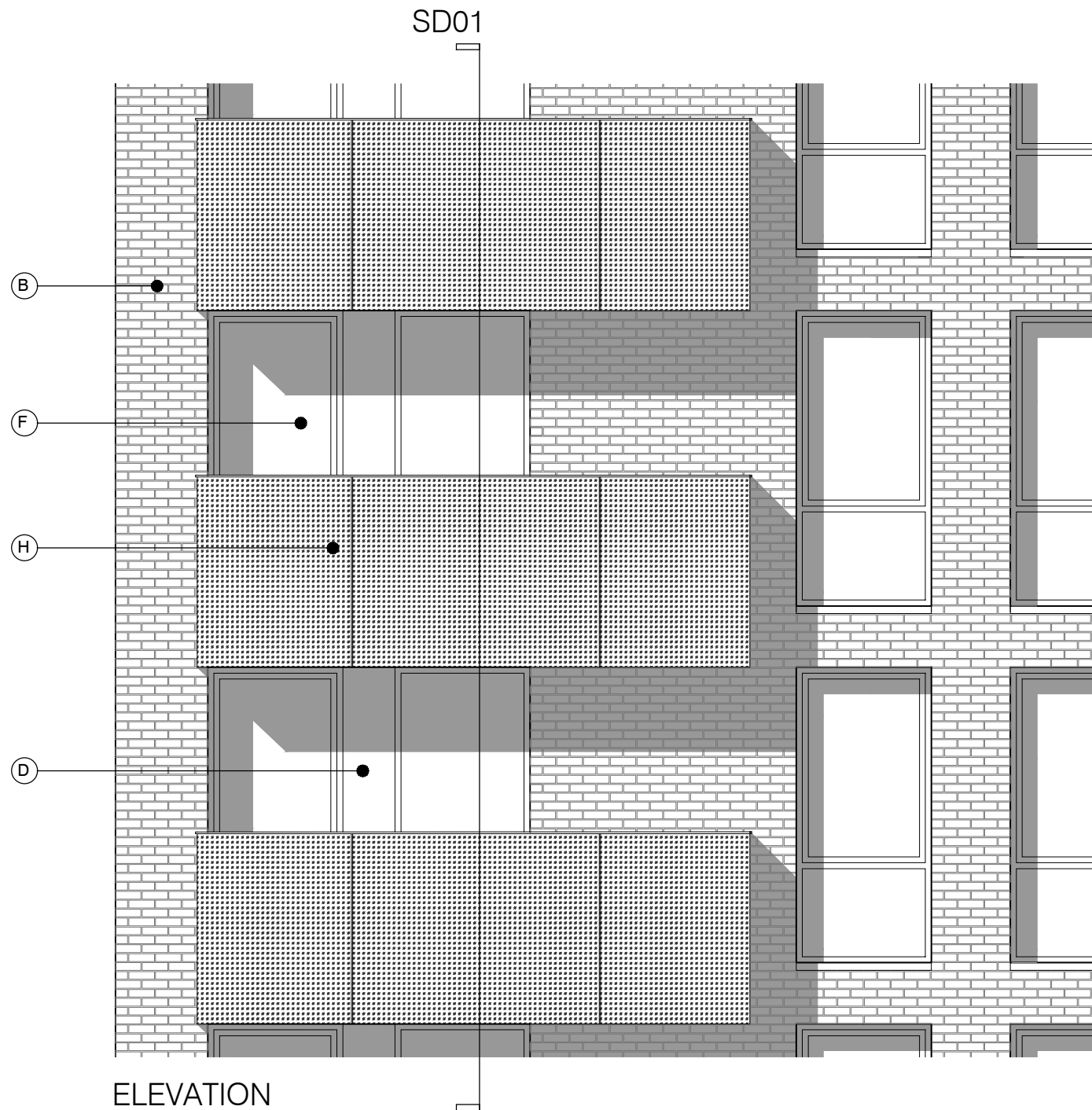
C	21.06.16	Amendment references added. Material Key updated. Issued to Planners	EN	DPD
Key location changed due to AM06 - omission of a terraced area to 3B unit				
B	15.04.16	Amendment references added. Material Key updated. Issued to CBRE	BM	DPD
A	18.12.15	Amendment references added. Issued to CBRE	BM	DPD

rev.	date	notes	drn	aud
drawing status				
<b>PLANNING</b>				
Diespeker Wharf 38 Graham Street London N1 8JX				
<b>PTEa</b>				
HOLLARD THOMAS EDWARDS architects				
t: 020 7336 7777	w: www.ptea.co.uk			
f: 020 7336 0770	e: forename.surname@ptea.co.uk			
project	job.no.	drawn	audited	scale
ABBEY AREA REGENERATION-PHASE 1 LONDON	12_510	EG	DPD	1:50@A1
date				
JUL 13				
dwg title	dwg. no.	rev		
TOP FLOOR TERRACE DETAILS	510_1_PL_401	C		

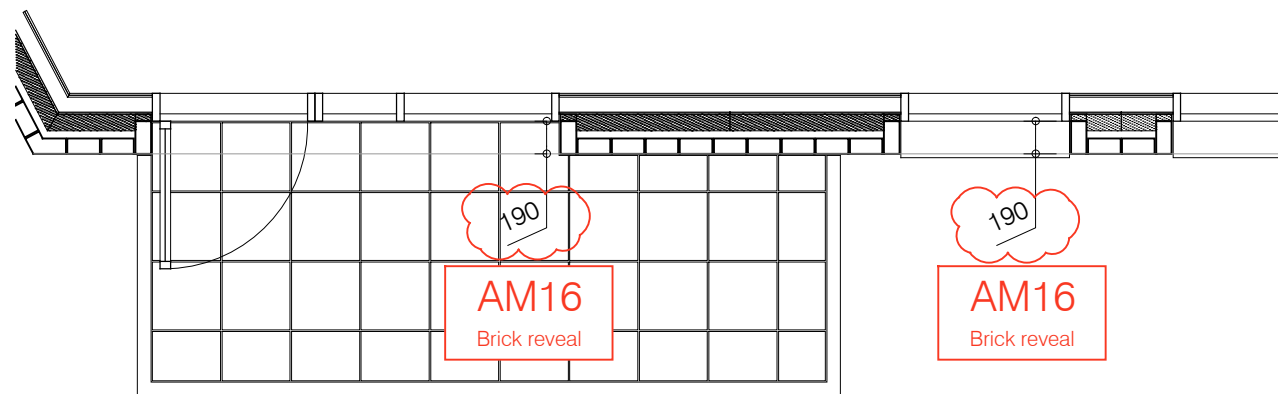




SECTION DETAIL 01



ELEVATION



PLAN

**MATERIAL KEY**

**B** - Brick work type 2: TYPE TO BE AGREED but darker than Type 1, stretcher bond brickwork with Cemex London White mortar or similar. Allow for darker mortar to recessed brick walls. Openings to have a deep brick reveal (approx 190mm unless stated otherwise).

**D** - Metal panel: bronze effect panels with hidden fixings and minimal joints.

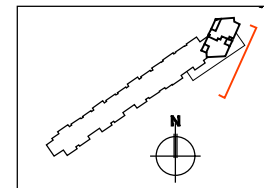
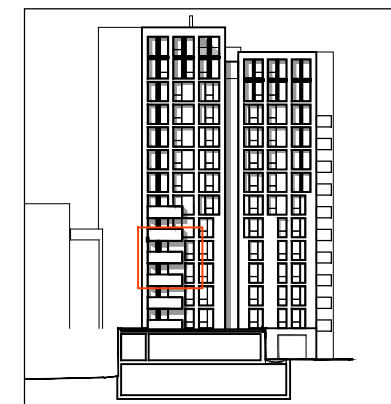
**F** - Windows / doors: bronze effect aluminum framed double or triple glazed units (manufacturer to be agreed).

**H** - Perforated metal balustrade or privacy screen: perforated metal (bronze metallic finish) supported off PPC coated frame with hidden fixings and minimal joints - allow for non-uniform setting out of perforations - details to be agreed

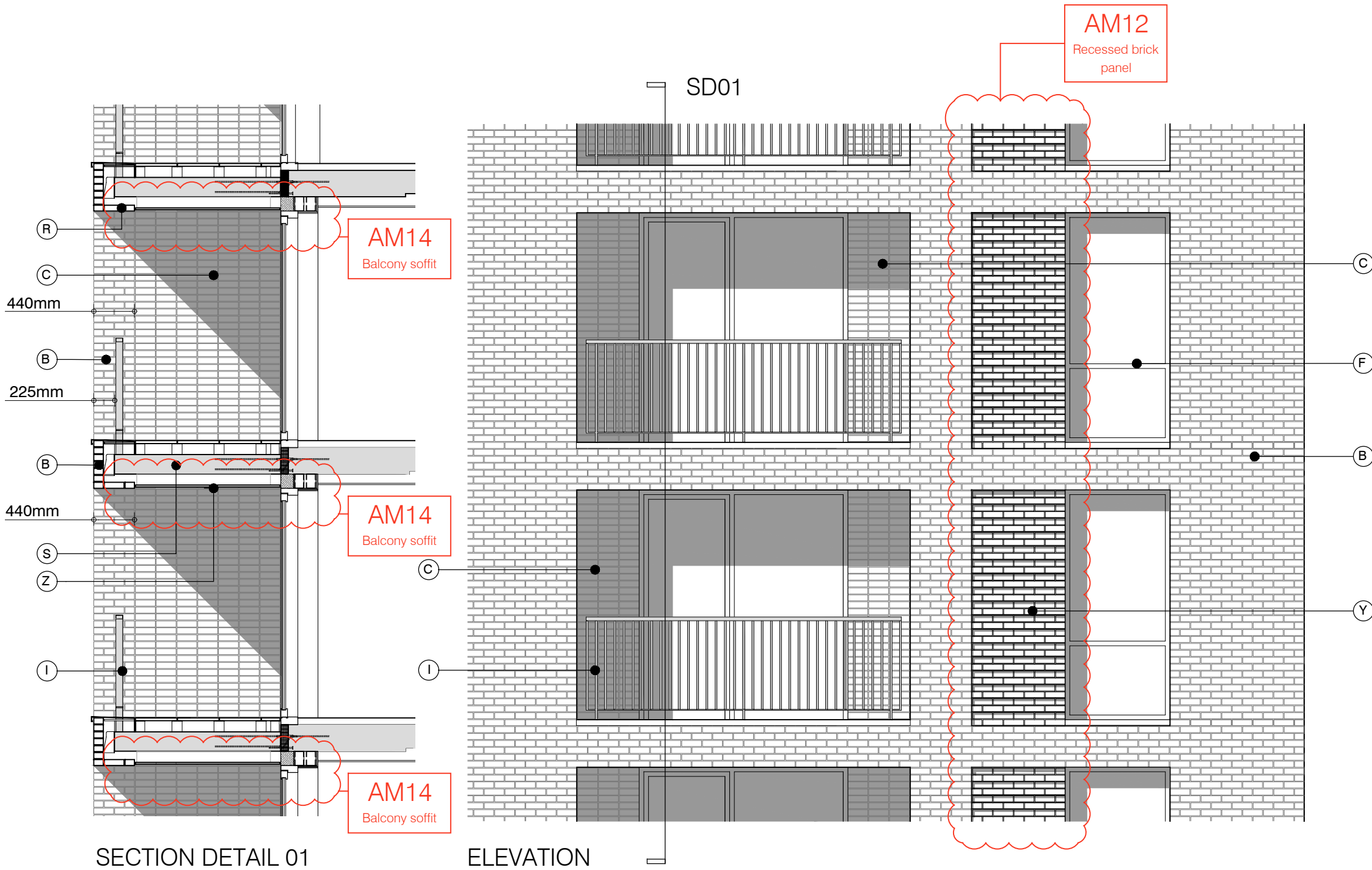
**S** - Balcony: Thermally broken in-situ cast concrete cantilevered balcony structure with 50mm thick stone pavers (pietra serena sandstone or similar)

**V** - Metal balcony soffit (bronze metallic finish) with hidden fixings and minimal joints supported off PPC coated frame

For specification, refer to Condition 26 parts (a) + (b) decision notice dated 22 October 2015, ref: 2015/3878/p



S73 APPLICATION						
B	21.06.16	Amendment references added; material key updated. Issued to planning.			EN	DPD
A	15.04.16	Amendment references added. Issued to CBRE			BM	DPD
rev.	date	notes		dm	aud	
drawing status						
PLANNING						
Diespeker Wharf 38 Graham Street London N1 8JX				<b>PTEa</b> POLLARD THOMAS EDWARDS architects		
t: 020 7336 7777		w: www.ptea.co.uk				
f: 020 7336 0770		e: forename.surname@ptea.co.uk				
project	ABBEY AREA REGENERATION-PHASE 1 LONDON	job no.	12_510	drawn	EG	audited
scale	1:50@A1	date	JUL 13			
dwg title	PROJECTING BALCONY DETAILS	dwg no.	510_1_PL_402	rev	B	



SECTION DETAIL 01

ELEVATION

PLAN

**MATERIAL KEY**

**B** - Brick work type 2: TYPE TO BE AGREED but darker than Type 1, stretcher bond brickwork with Cemex London White mortar or similar. Allow for darker mortar to recessed brick walls. Openings to have a deep brick reveal (approx 190mm unless stated otherwise).

**C** - Glazed brickwork: TYPE TO BE AGREED, stack bonded, to Block F recessed balconies. Soffits to be brick slips (same brick specification as recessed walls), also stack bonded.

**E** - Shop front frameless glass curtain walling with 75mm aluminum capping at base, bronze effect aluminum framed double or triple glazed doors to match.

**F** - Windows / doors: bronze effect aluminum framed double or triple glazed units (manufacturer to be agreed).

**I** - Metal Railing Balustrade: formed from PPC vertical flats (approx 65 x 8mm)

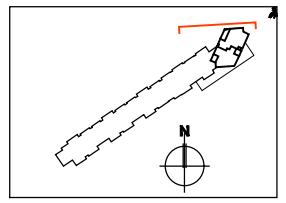
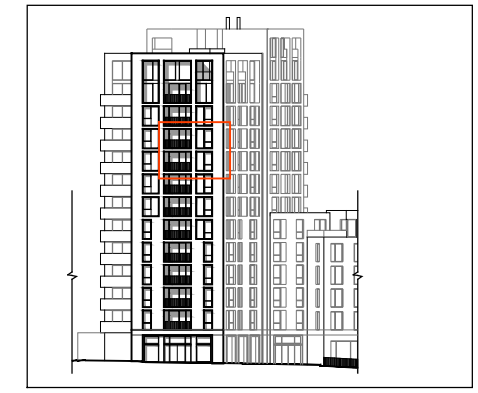
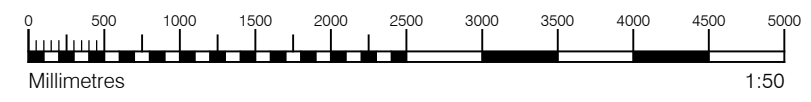
**S** - Balcony: Thermally broken in-situ cast concrete cantilevered balcony structure with 50mm thick stone pavers (pietra serena sandstone or similar)

**R** - Brick Soffit on fixing ancon bracket : Brick type to match facing brick

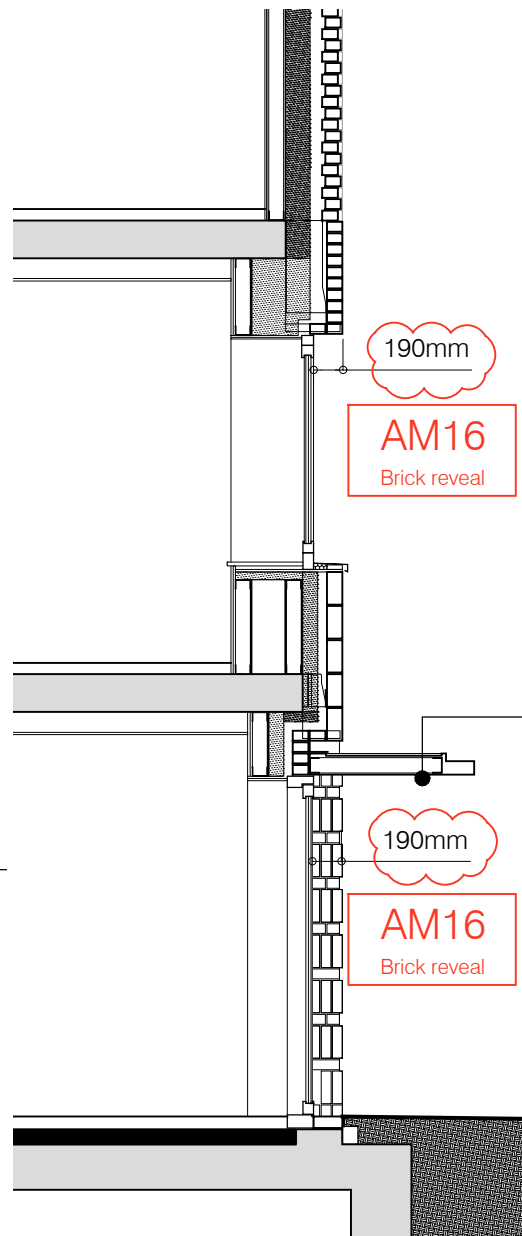
**Y** - Brick work type 2: Slightly recessed brick wall with stepped brick coursing

**Z** - Render / soffit panel to underside of balcony

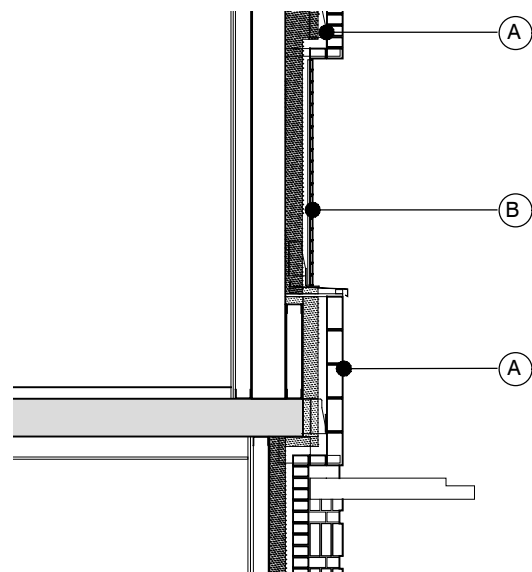
For specification , refer to Condition 26 parts (a) + (b) decision notice dated 22 October 2015, ref: 2015/3878/p



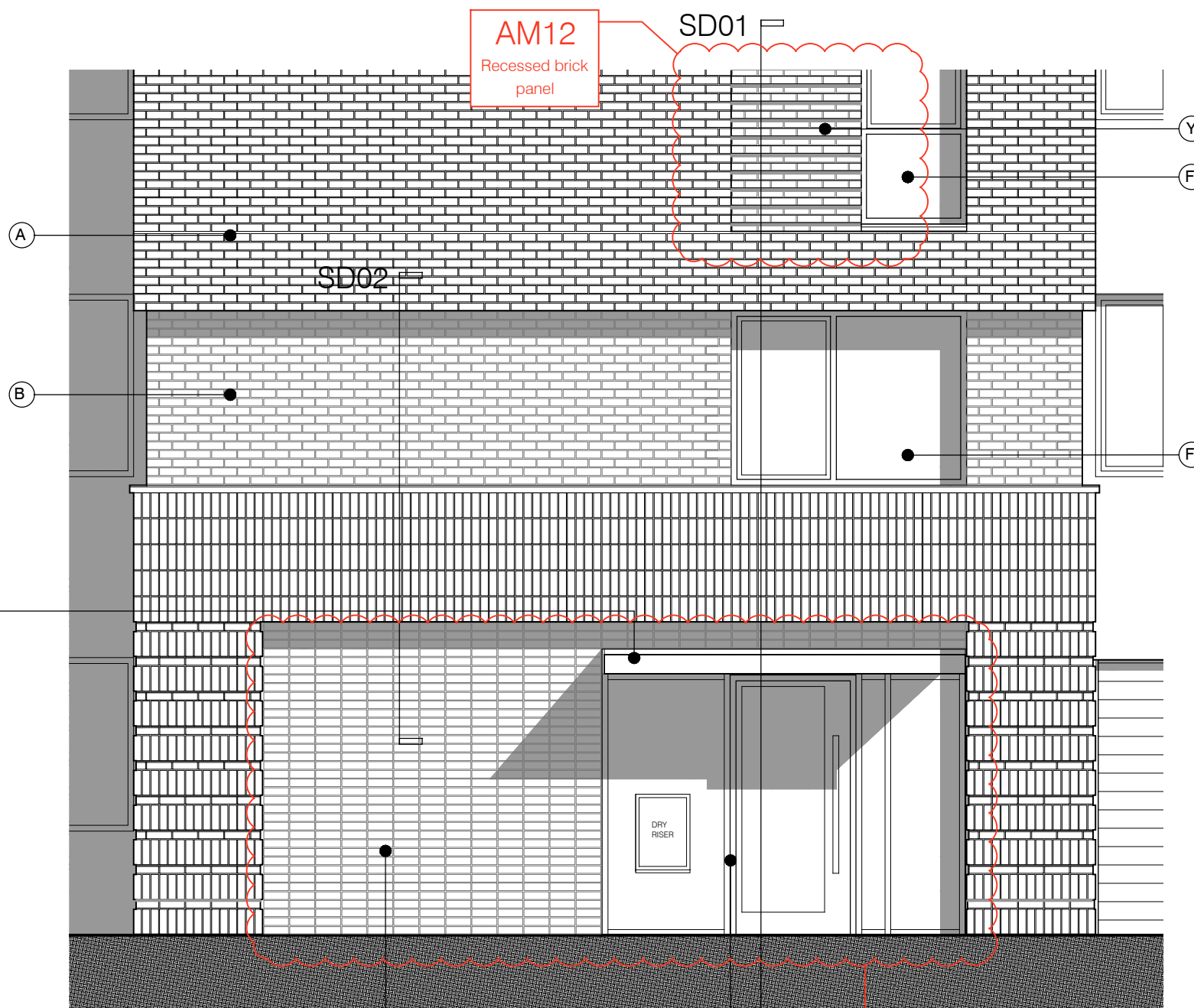
S73 APPLICATION					
B	21.06.16	Amendment references added. Material Key Updated. Issued to Planning	EN	DPD	
A	15.04.16	Amendment references added. Material Key Updated. Issued to CBRE	BM	DPD	
rev.	date	notes	drn	aud	
drawing status: <b>PLANNING</b>					
Diespeker Wharf 38 Graham Street London N1 8JX			<b>PTEa</b> POLLARD THOMAS EDWARDS architects		
t: 020 7336 7777 f: 020 7336 0770		w: www.ptea.co.uk e: forename.surname@ptea.co.uk			
project	job.no.	drawn	audited	scale	date
ABBEY AREA REGENERATION-PHASE 1 LONDON	12_510	EG	DPD	1:50@A1	JUL 13
dwg title	dwg.no.	rev			
INSET BALCONY DETAIL	510_1_PL_403	B			



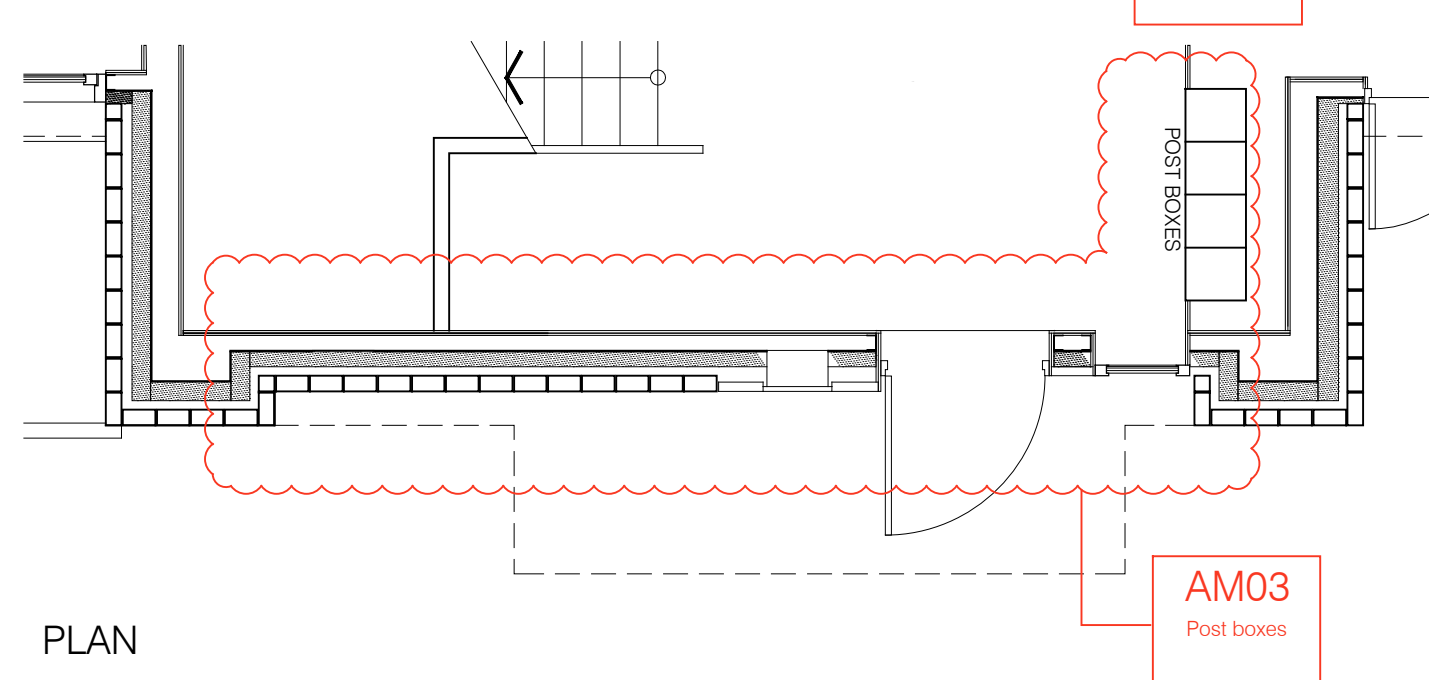
SECTION DETAIL 01



SECTION DETAIL 02



ELEVATION



PLAN

**MATERIAL KEY**

- A** - Brick work type 1: stretcher bond brickwork. Openings to have a deep brick reveal (approx 190mm unless stated otherwise).
- B** - Brick work type 2: stretcher bond brickwork. Allow for darker mortar to recessed brick walls. Openings to have a deep brick reveal (approx 190mm unless stated otherwise).
- F** - Windows / doors: bronze effect aluminum framed double or triple glazed units (manufacturer to be agreed).
- G** - Canopies: Pre-formed metal boxed canopy in bronze metallic finish with hidden structure and integral lighting.
- M** - Residential Entrances: Glazed brickwork - Green stack bonded.
- Y** - Brick work type 2: Slightly recessed brick wall with stepped brick coursing

For specification, refer to Condition 26 parts (a) + (b) decision notice dated 22 October 2015, ref: 2015/3878/p

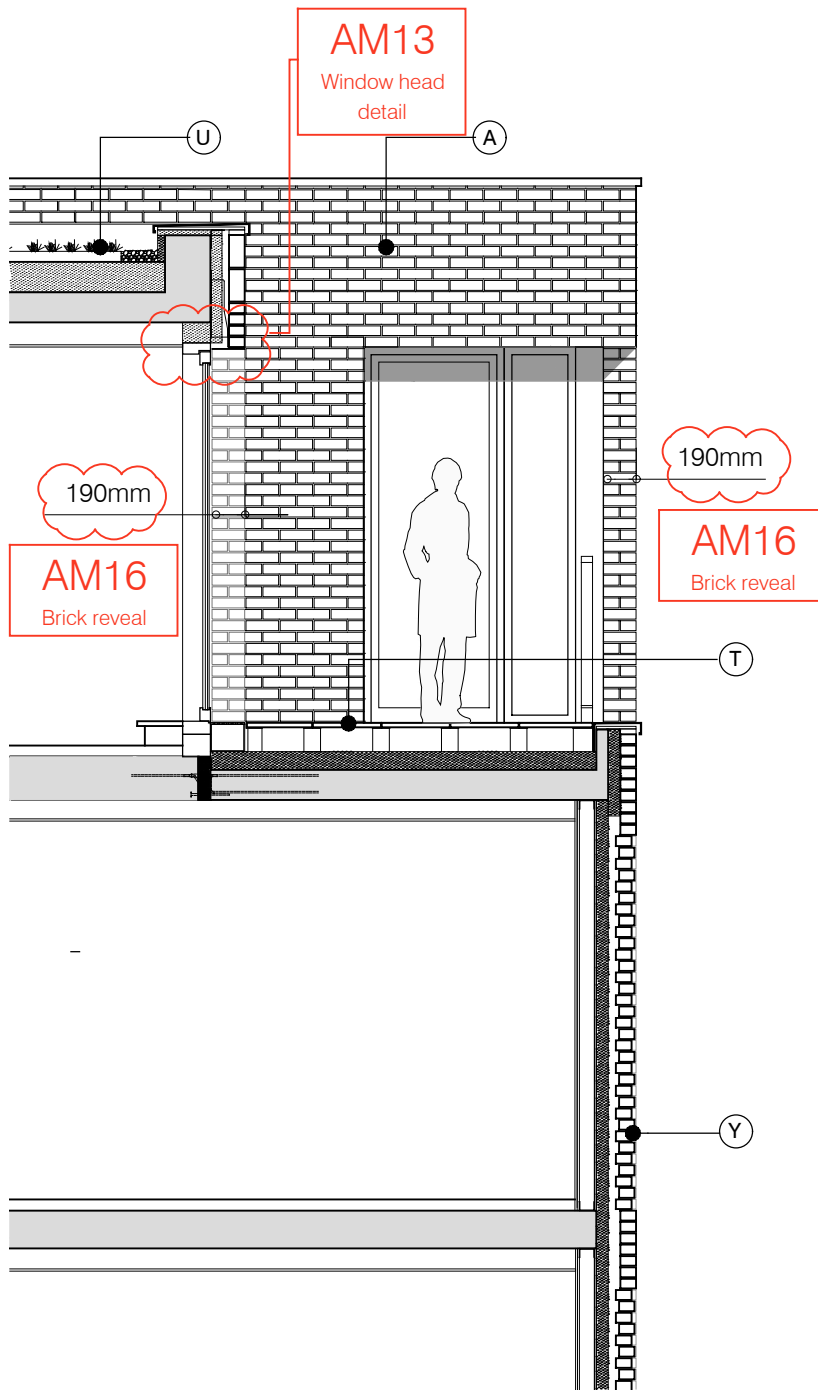


**S73 APPLICATION**

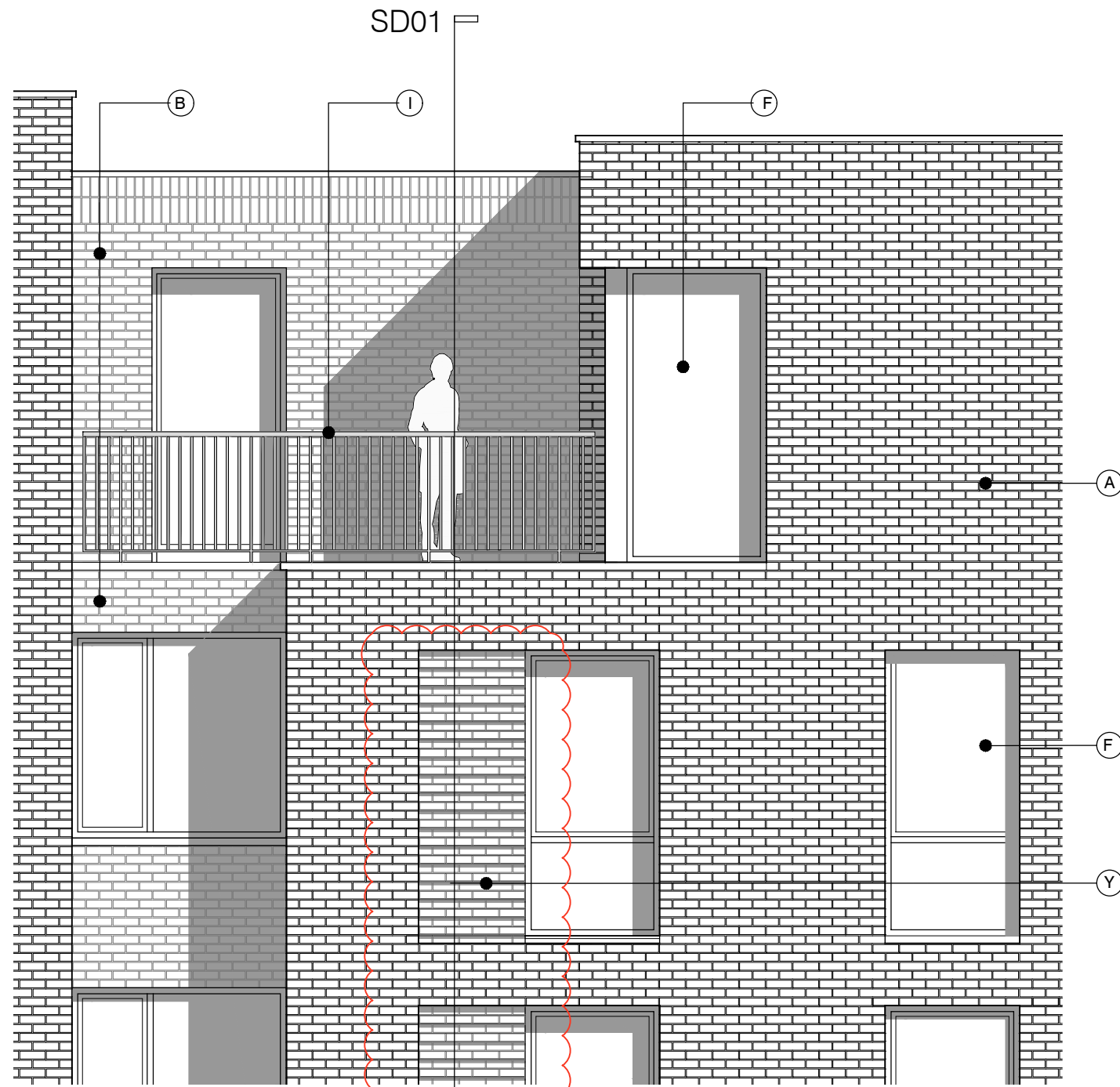
C	21.06.15	Amendment references added. Material Key updated. Issued to planning	EN	DPD
B	15.04.16	Amendment references added. Material Key updated. Issued to CBRE	BM	DPD
A	18.12.15	Amendment references added. Issued to CBRE	BM	DPD
rev.	date	notes	dm	aud

drawing status					<b>PLANNING</b>	
Diespeker Wharf 38 Graham Street London N1 8JX					<b>PTEa</b> POLLARD THOMAS EDWARDS architects	
t: 020 7336 7777 w: www.ptea.co.uk						
f: 020 7336 0770 e: forename.surname@ptea.co.uk						
project	job no.	drawn	audited	scale	date	
ABBEY AREA REGENERATION-PHASE 1 LONDON	12_510	EG	DPD	1:50@A1	JUL 13	
dwg title	dig. no.		rev			
FRONT ENTRANCE - BLOCK C	510_1_PL_404		C			

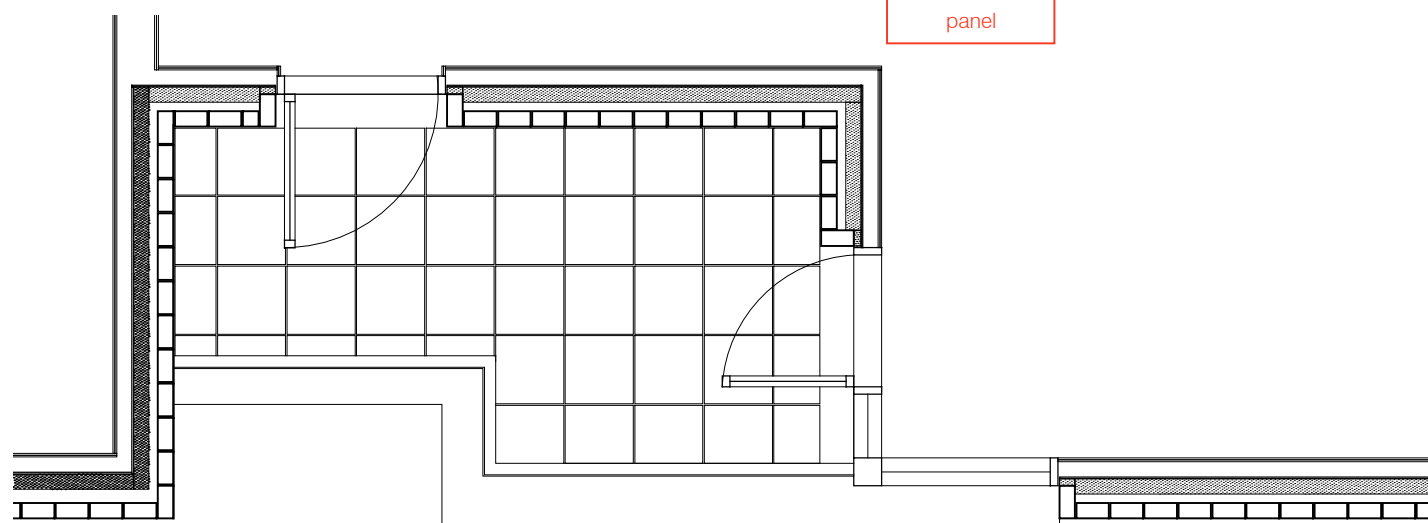




SECTION DETAIL 01



ELEVATION



PLAN

**MATERIAL KEY**

**A** - Brick work type 1: TYPE TO BE AGREED, stretcher bond brickwork with Cemex London White mortar or similar. Openings to have a deep brick reveal (approx 190mm unless stated otherwise).

**B** - Brick work type 2: TYPE TO BE AGREED but darker than Type 1, stretcher bond brickwork with Cemex London White mortar or similar. Allow for darker mortar to recessed brick walls. Openings to have a deep brick reveal (approx 190mm unless stated otherwise).

**F** - Windows / doors: bronze effect aluminum framed double or triple glazed units (manufacturer to be agreed).

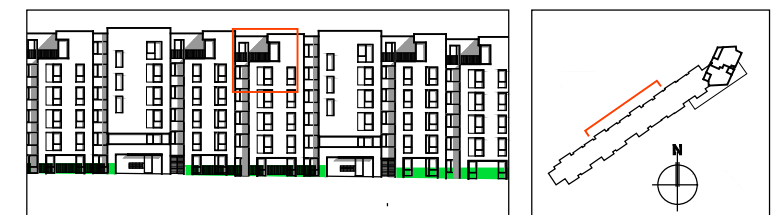
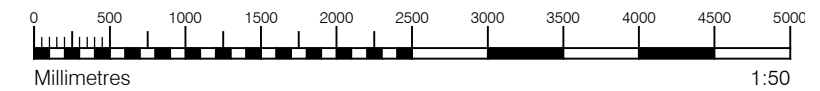
**I** - Metal Railing Balustrade: formed from PPC vertical flats (approx 65 x 8mm)

**T** - Terrace: with 50mm thick stone pavers (pietra serena sandstone or similar)

**U** - Roofs: Insulated extensive green biodiverse roof with parapet wall

**Y** - Brick work type 2: Slightly recessed brick wall with stepped brick coursing

For specification, refer to Condition 26 parts (a) + (b) decision notice dated 22 October 2015, ref: 2015/3878/p

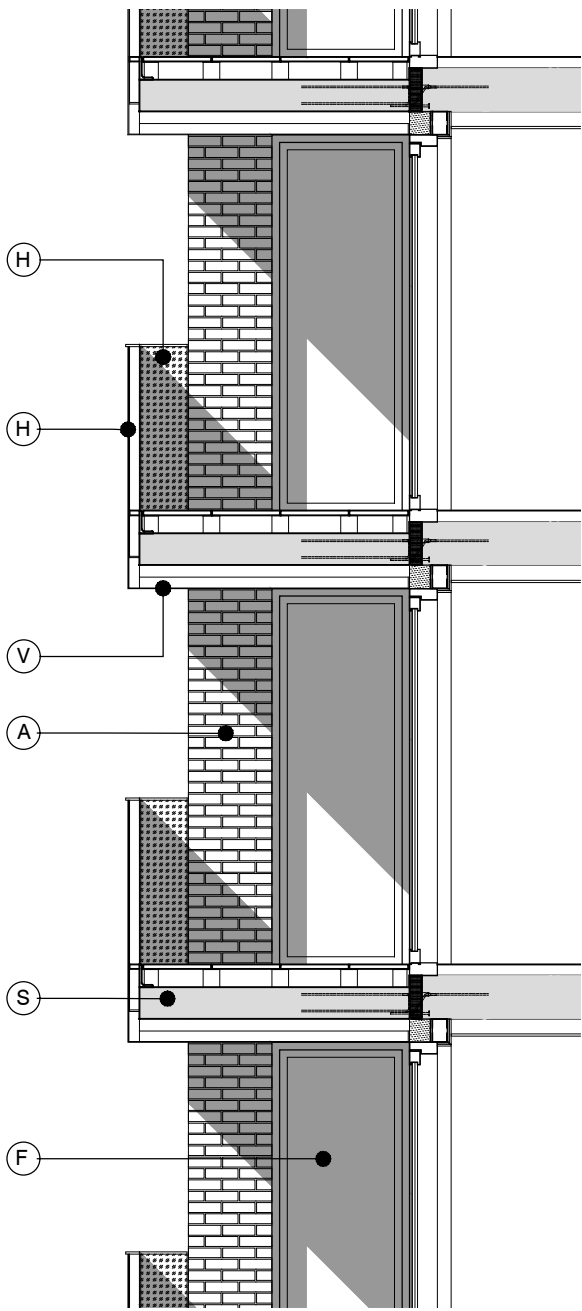


**S73 APPLICATION**

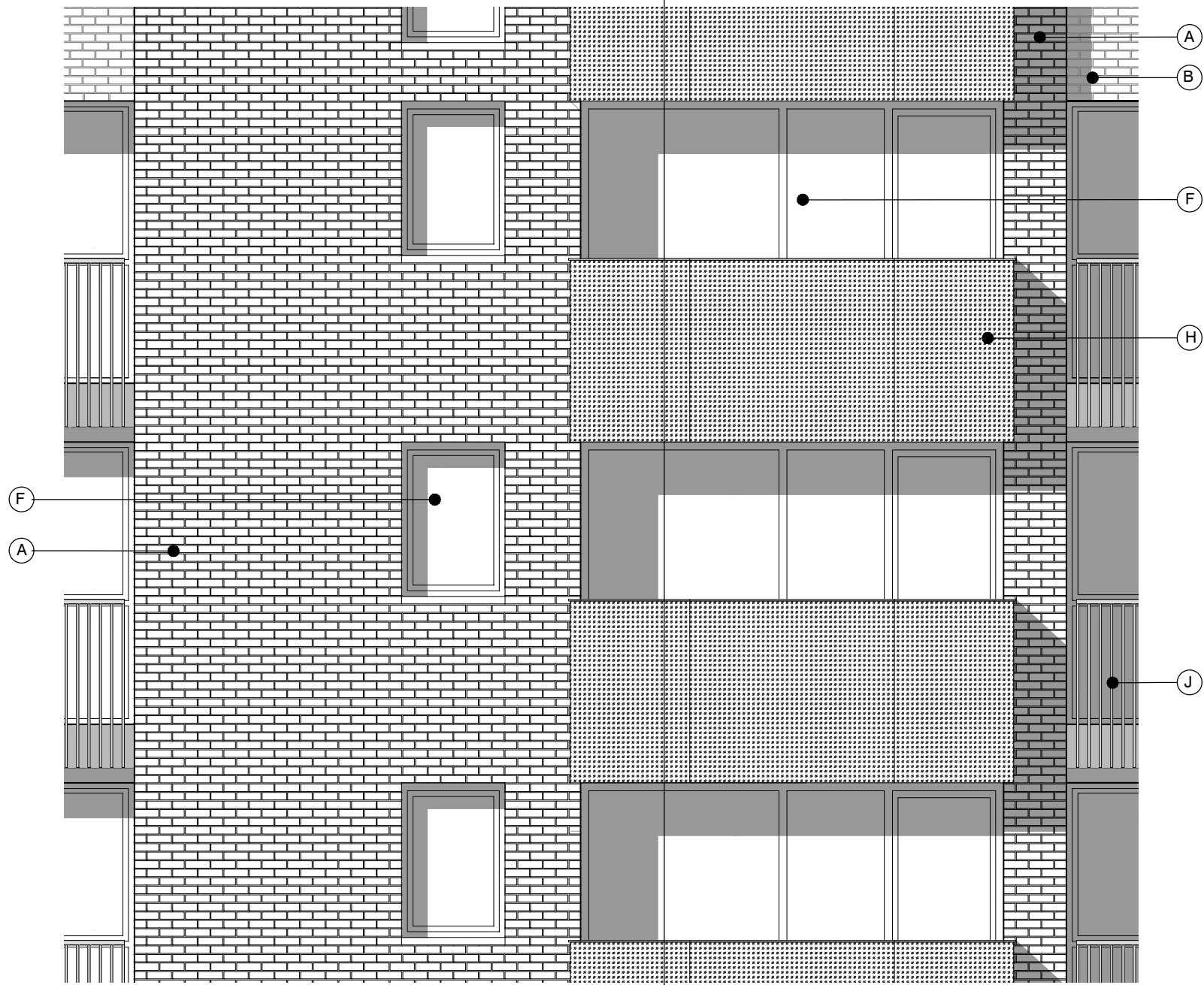
B	21.06.16	Amendment references added. Material Key Updated. Issued to Planning	EN	DPD
A	15.04.16	Amendment references added. Material Key Updated. Issued to CBRE	BM	DPD
rev.	date	notes	dm	aud

drawing status					PLANNING	
Diespeker Wharf 38 Graham Street London N1 8JX			<b>PTEa</b> POLLARD THOMAS EDWARDS architects			
t:	020 7336 7777	w:	www.ptea.co.uk			
f:	020 7336 0770	e:	forename.surname@ptea.co.uk			
project	ABBEY AREA REGENERATION-PHASE 1 LONDON	job no.	12_510	drawn	EG	
		audited	DPD	scale	1:50@A1	
		date			JUL 13	
dwg title	5TH FLOOR TERRACE - BLOCK B		dig. no.	510_1_PL_405	rev	
					B	

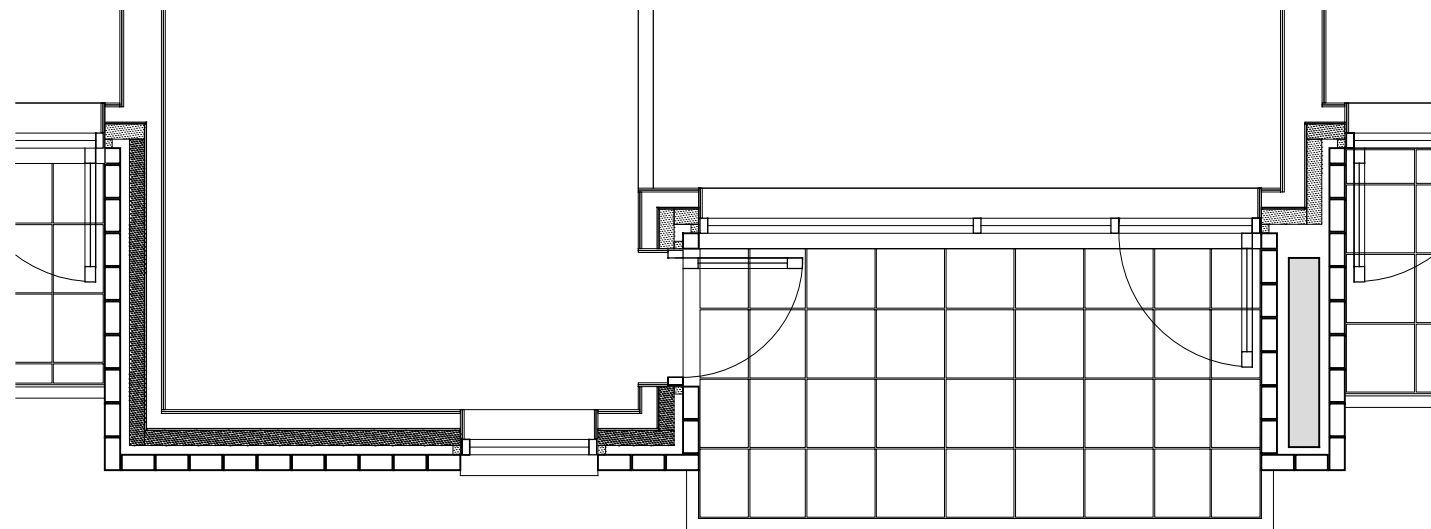
SD01



SECTION DETAIL 01



ELEVATION



PLAN

MATERIAL KEY

**A** - Brick work type 1: TYPE TO BE AGREED, stretcher bond brickwork with Cemex London White mortar or similar. Openings to have a deep brick reveal (approx 190mm unless stated otherwise).

**B** - Brick work type 2: TYPE TO BE AGREED but darker than Type 1, stretcher bond brickwork with Cemex London White mortar or similar. Allow for darker mortar to recessed brick walls. Openings to have a deep brick reveal (approx 190mm unless stated otherwise).

**F** - Windows / doors: bronze effect aluminum framed double or triple glazed units (manufacturer to be agreed).

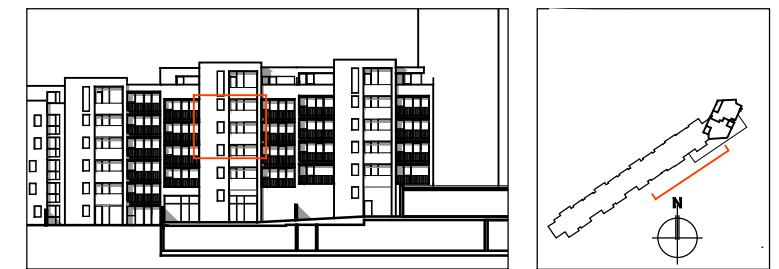
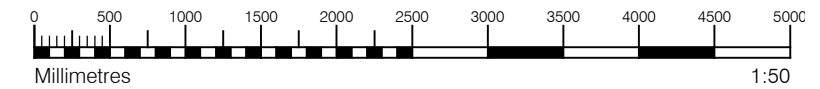
**H** - Perforated metal balustrade or privacy screen: perforated metal (bronze metallic finish) supported off PPC coated frame with hidden fixings and minimal joints - allow for non-uniform setting out of perforations - details to be agreed

**J** - Metal Railing Balustrade: formed from PPC vertical flats (approx 65 x 8mm) extending to balcony soffit with metal plate fascia fixed to balcony edge

**S** - Balcony: Thermally broken in-situ cast concrete cantilevered balcony structure with 50mm thick stone pavers (pietra serena sandstone or similar)

**V** - Metal balcony soffit (bronze metallic finish) with hidden fixings and minimal joints supported off PPC coated frame

For specification, refer to Condition 26 parts (a) + (b) decision notice dated 22 October 2015, ref: 2015/3878/p



S73 APPLICATION

B	21.06.16	Material Key Updated. Issued to Planning	EN	DPD
A	15.04.16	Amendment references added. Material Key Updated. Issued to CBRE	BM	DPD
rev.	date	notes	drn	aud

drawing status: **PLANNING**

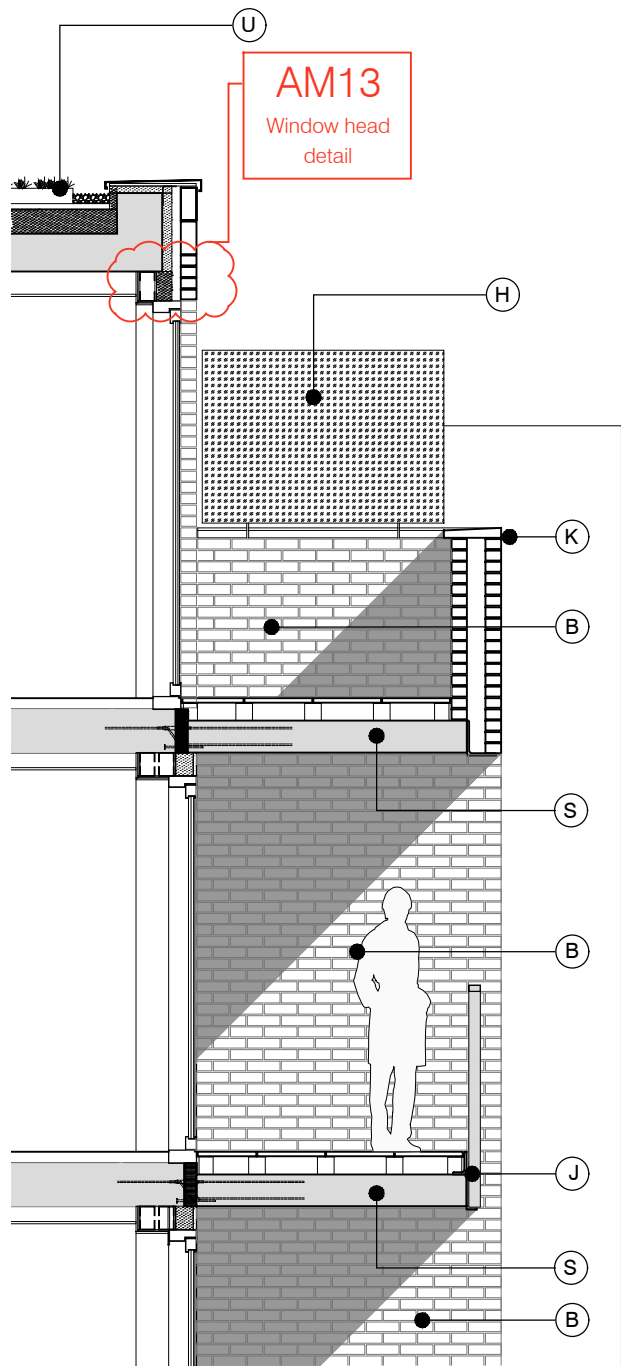
Diespeker Wharf  
38 Graham Street  
London N1 8JX

t: 020 7336 7777 w: www.ptea.co.uk  
f: 020 7336 0770 e: forename.surname@ptea.co.uk

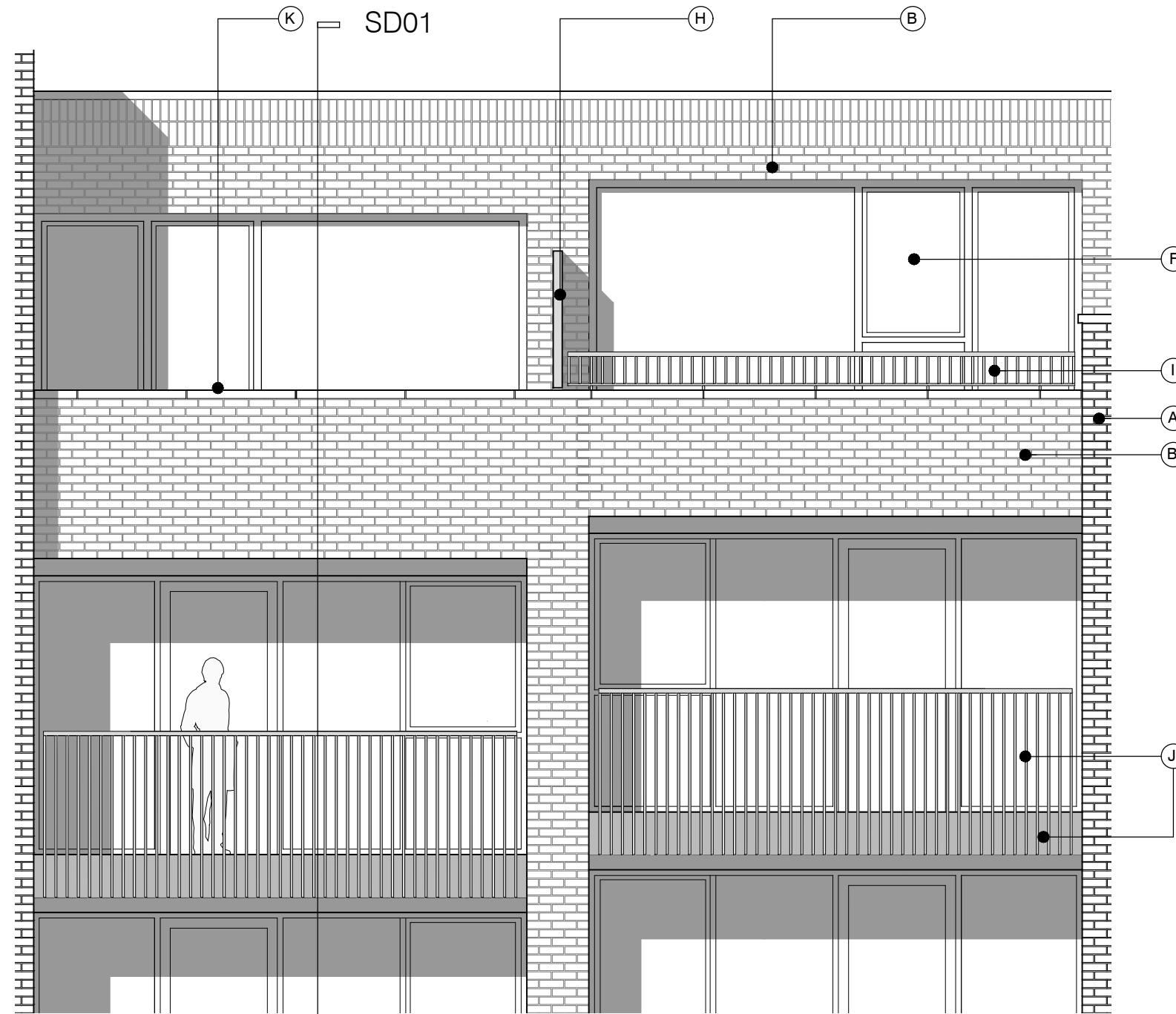


project	ABBEY AREA REGENERATION-PHASE 1 LONDON	job no.	12_510	drawn	EG	audited	DPD	scale	1:50@A1	date	JUL 13
dwg title	PARTIALLY INSET BALCONIES - SOUTH ELEVATION	dwg no.	510_1_PL_406	rev							B

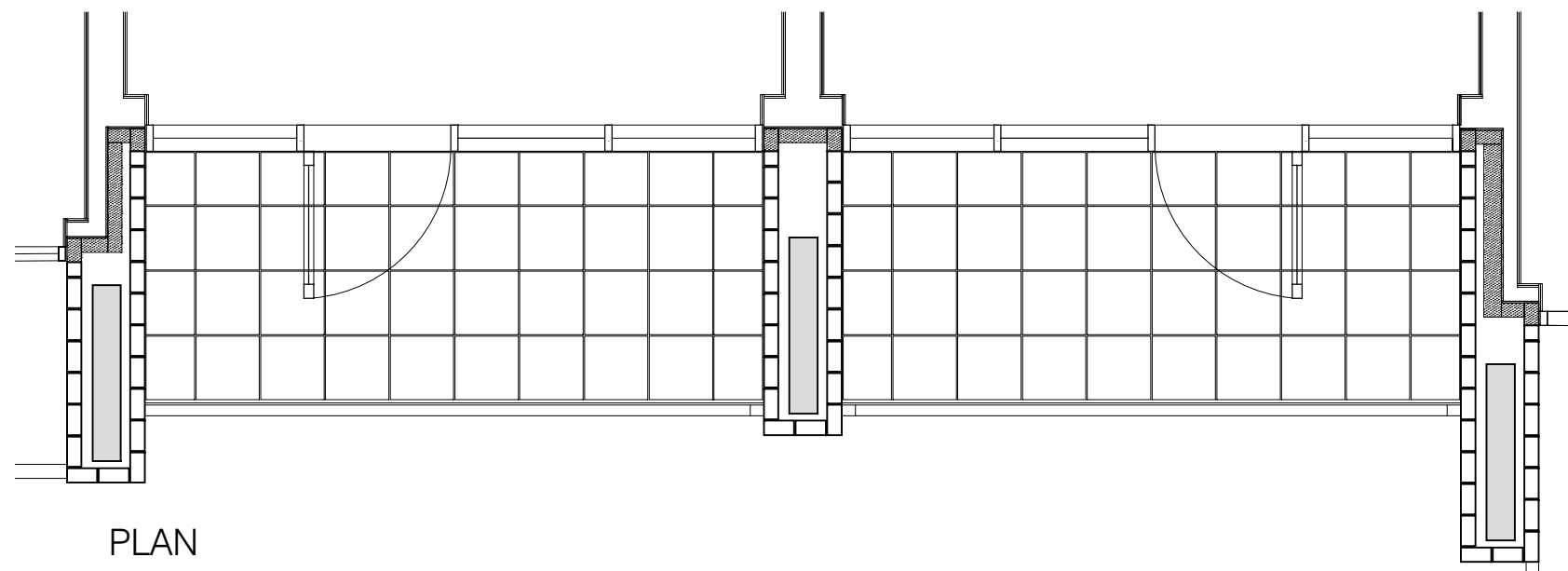




SECTION DETAIL 01



ELEVATION

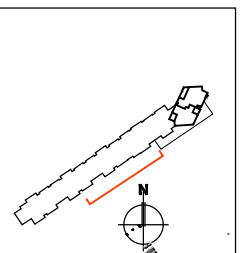
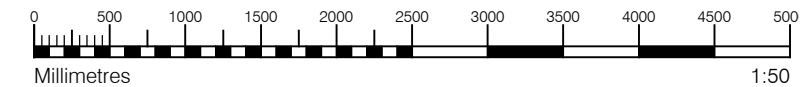


PLAN

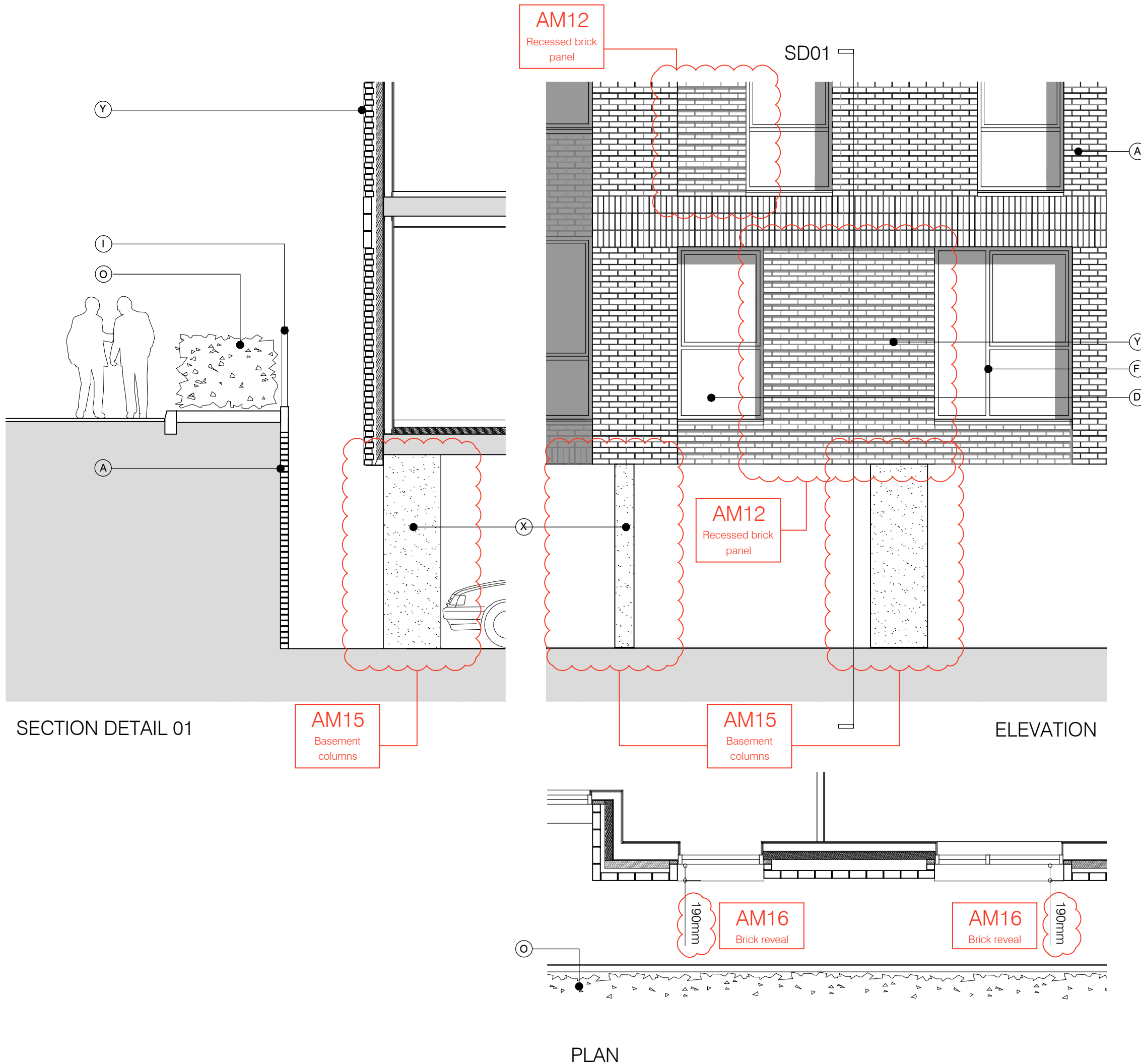
MATERIAL KEY

- A** - Brick work type 1: TYPE TO BE AGREED, stretcher bond brickwork with Cemex London White mortar or similar. Openings to have a deep brick reveal (approx 190mm unless stated otherwise).
- B** - Brick work type 2: TYPE TO BE AGREED but darker than Type 1, stretcher bond brickwork with Cemex London White mortar or similar. Allow for darker mortar to recessed brick walls. Openings to have a deep brick reveal (approx 190mm unless stated otherwise).
- F** - Windows / doors: bronze effect aluminum framed double or triple glazed units (manufacturer to be agreed).
- H** - Perforated metal balustrade or privacy screen: perforated metal (bronze metallic finish) supported off PPC coated frame with hidden fixings and minimal joints - allow for non-uniform setting out of perforations - details to be agreed
- I** - Metal Railing Balustrade: formed from PPC vertical flats (approx 65 x 8mm)
- J** - Metal Railing Balustrade: formed from PPC vertical flats (approx 65 x 8mm) extending to balcony soffit with metal plate fascia fixed to balcony edge
- K** - Precast concrete or stone coping to parapet wall - allow for reinforcement back to structure.
- S** - Balcony: Thermally broken in-situ cast concrete cantilevered balcony structure with 50mm thick stone pavers (pietra serena sandstone or similar)
- U** - Roofs: Insulated extensive green biodiverse roof with parapet wall

For specification, refer to Condition 26 parts (a) + (b) decision notice dated 22 October 2015, ref: 2015/3878/p



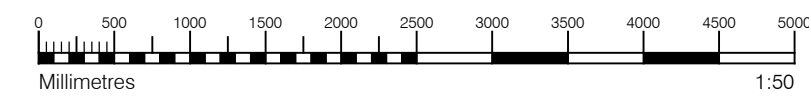
S73 APPLICATION							
B	21.06.16	Amendment references added. Material Key Updated. Issued to Planning				EN	DPD
A	15.04.16	Amendment references added. Material Key Updated. Issued to CBRE				BM	DPD
rev.	date	notes				dwn	aud
drawing status							
PLANNING							
Diespeker Wharf 38 Graham Street London N1 8JX						<b>PTEa</b> <small>POLLARD THOMAS EDWARDS architects</small>	
t:	020 7336 7777	w:	www.ptea.co.uk				
f:	020 7336 0770	e:	forename.surname@ptea.co.uk				
project	ABBEY AREA REGENERATION-PHASE 1 LONDON	job no.	12_510	drawn	EG	audited	DPD
scale	1:50@A1		date	JUL 13			
dwg title	INSET BALCONIES - SOUTH ELEVATION		dig. no.	510_1_PL_407		rev	B



**MATERIAL KEY**

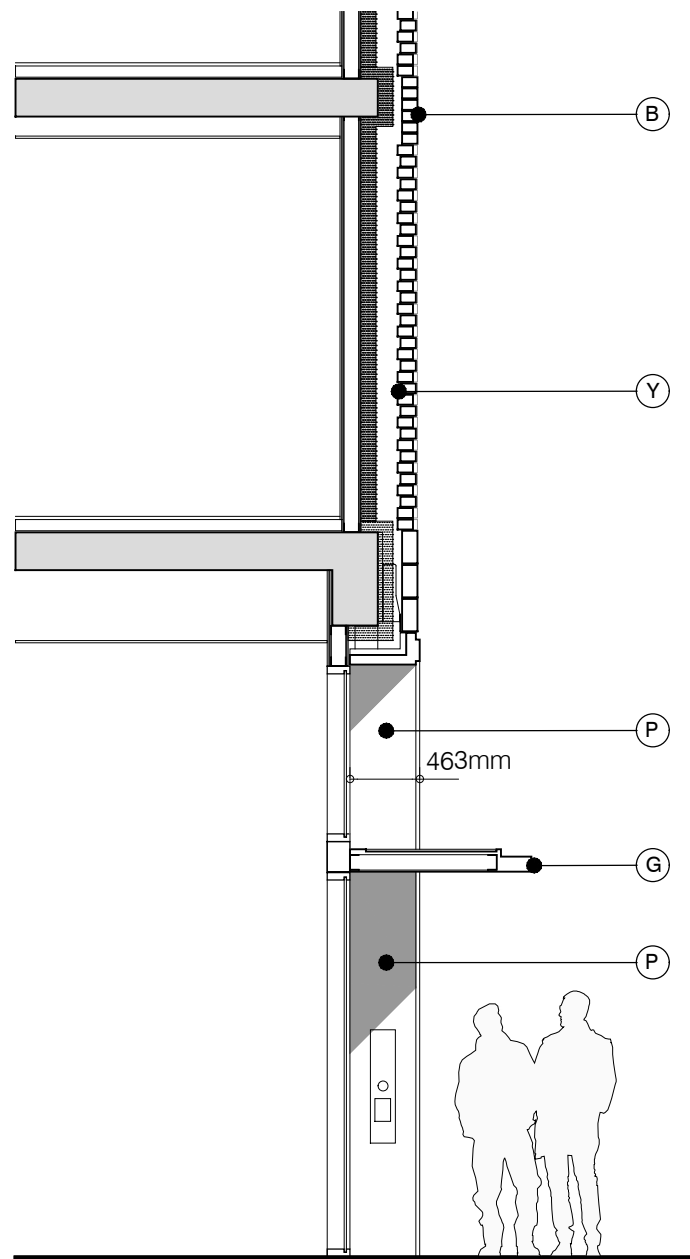
- A** - Brick work type 1: TYPE TO BE AGREED, stretcher bond brickwork with Cemex London White mortar or similar. Openings to have a deep brick reveal (approx 190mm unless stated otherwise).
- B** - Brick work type 2: TYPE TO BE AGREED but darker than Type 1, stretcher bond brickwork with Cemex London White mortar or similar. Allow for darker mortar to recessed brick walls. Openings to have a deep brick reveal (approx 190mm unless stated otherwise).
- D** - Metal panel: bronze effect panels with hidden fixings and minimal joints.
- F** - Windows / doors: bronze effect aluminum framed double or triple glazed units (manufacturer to be agreed).
- I** - Metal Railing Balustrade: formed from PPC vertical flats (approx 65 x 8mm)
- O** - 1.2 m high Fagus sylvatica (beech) instant hedge planted in a double staggered row
- Y** - Brick work type 2: Slightly recessed brick wall with stepped brick coursing
- X** - Exposed concrete structure in basement car park

For specification, refer to Condition 26 parts (a) + (b) decision notice dated 22 October 2015, ref: 2015/3878/p

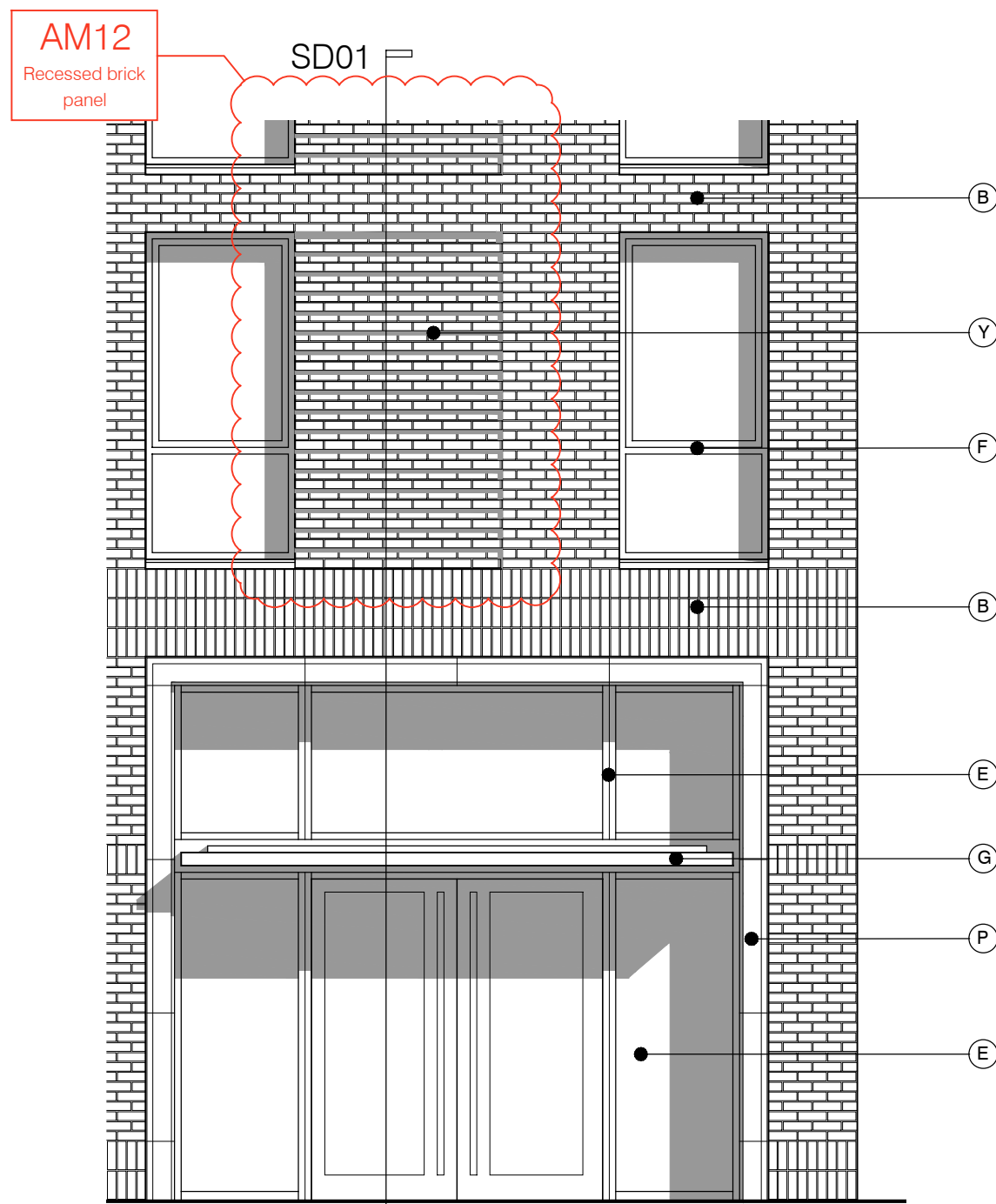


<b>S73 APPLICATION</b>					
B	21.06.16	Amendment references added. Material Key Updated. Issued to Planning	EN	DPD	
A	15.04.16	Amendment references added. Material Key Updated. Issued to CBRE	BM	DPD	
rev.	date	notes	drn	aud	
drawing status: <b>PLANNING</b>					
Diespeker Wharf 38 Graham Street London N1 8JX			 <b>PTEa</b> POLLARD THOMAS EDWARDS architects		
t:	020 7336 7777	w:			
f:	020 7336 0770	e:	forename.surname@ptea.co.uk		
project	ABBEY AREA REGENERATION-PHASE 1 LONDON	job no.	12_510	drawn	EG
		audited	DPD	scale	1:50@A1
		date	JUL 13		
dwg title	GROUND LEVEL/CARPARK BELSIZE ROAD		dwg. no.	510_1_PL_408	rev
					B

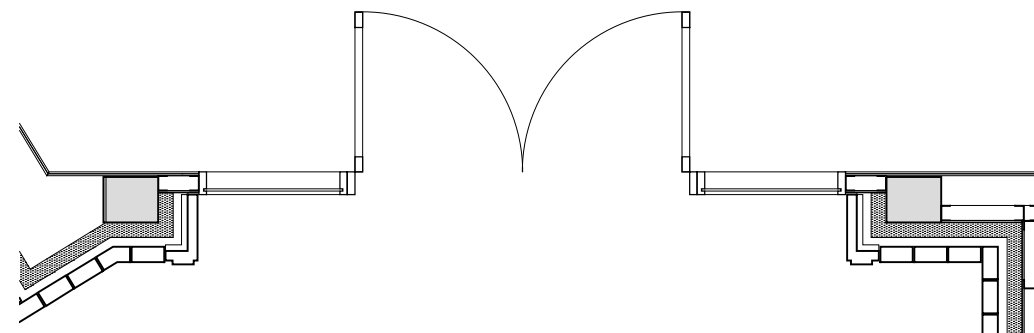




SECTION DETAIL 01



ELEVATION



PLAN

MATERIAL KEY

**B** - Brick work type 2: TYPE TO BE AGREED but darker than Type 1, stretcher bond brickwork with Cemex London White mortar or similar. Allow for darker mortar to recessed brick walls. Openings to have a deep brick reveal (approx 190mm unless stated otherwise).

**D** - Metal panel: bronze effect panels with hidden fixings and minimal joints.

**E** - Shop front frameless glass curtain walling with 75mm aluminum capping at base, bronze effect aluminum framed double or triple glazed doors to match.

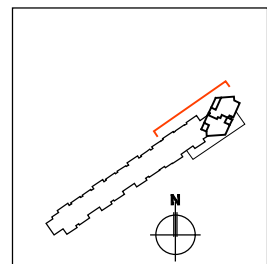
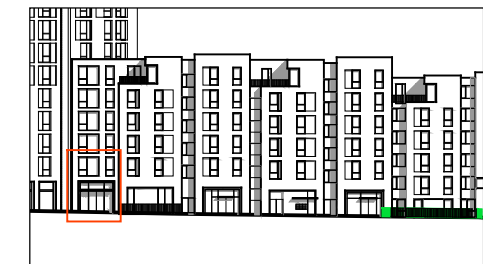
**F** - Windows / doors: bronze effect aluminum framed double or triple glazed units (manufacturer to be agreed).

**G** - Canopies: Pre-formed metal boxed canopy in bronze metallic finish with hidden structure and integral lighting.

**P** - Reconstituted Stone on fixing ancon bracket to form architrave detail to concierge/supermarket/retail entrances

**Y** - Brick work type 2: Slightly recessed brick wall with stepped brick coursing

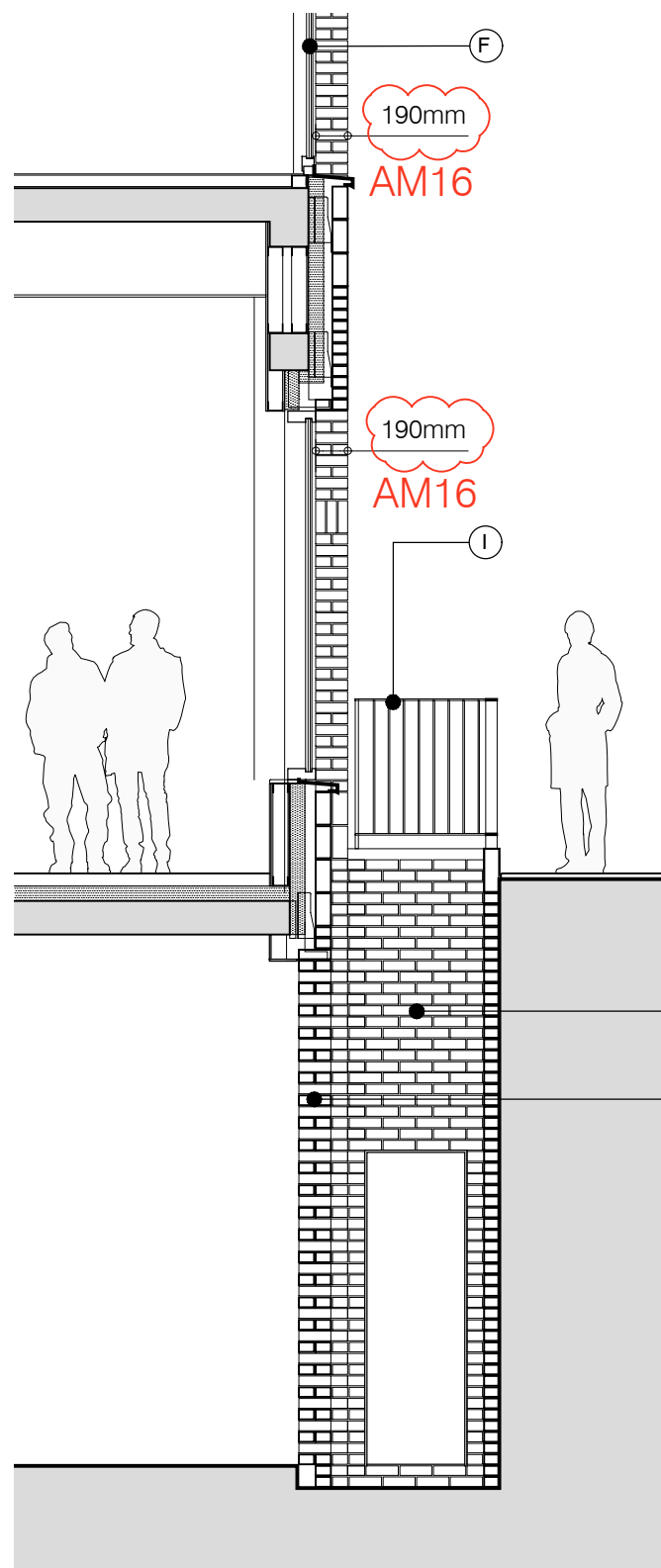
For specification, refer to Condition 26 parts (a) + (b) decision notice dated 22 October 2015, ref: 2015/3878/p



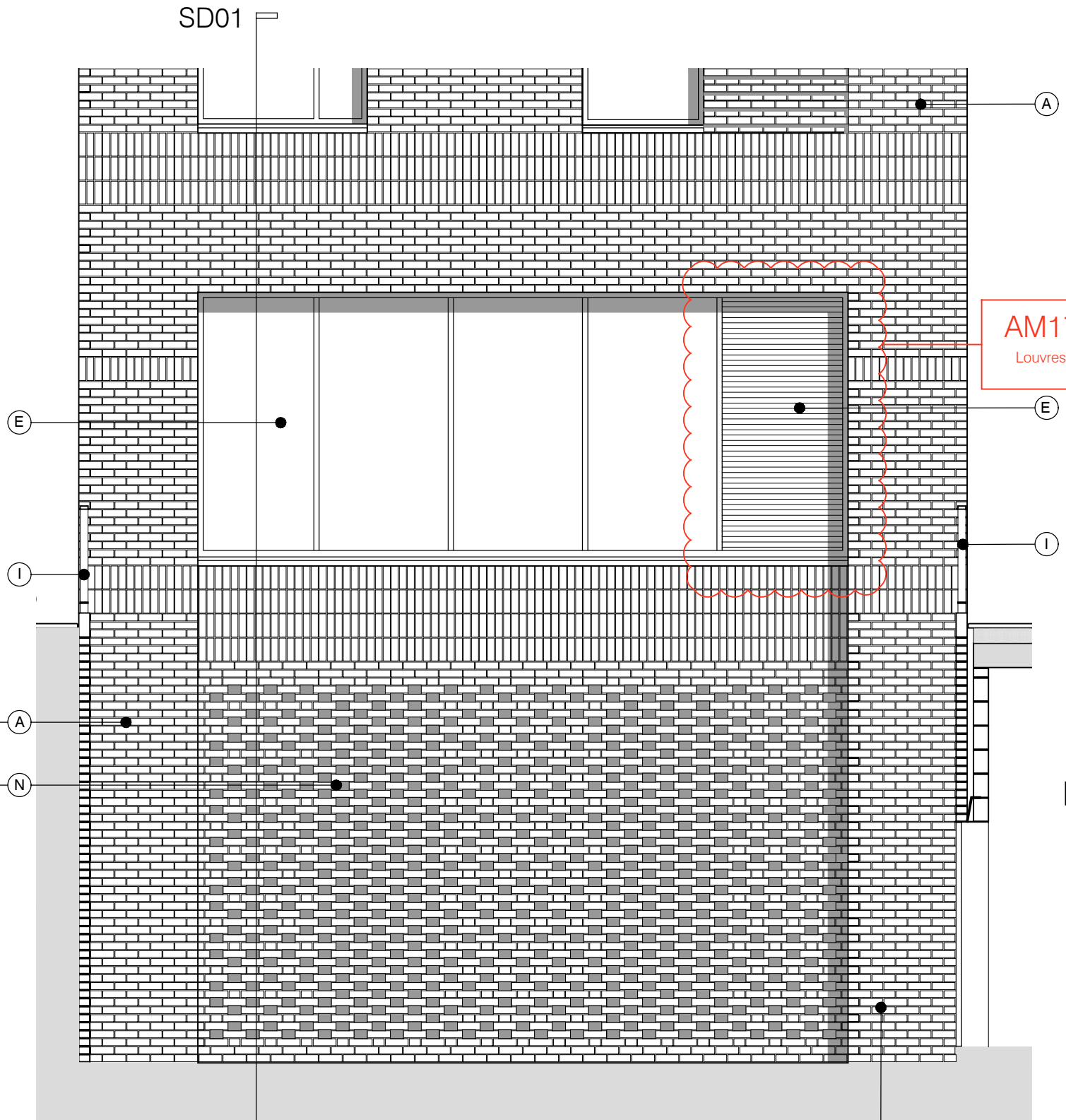
S73 APPLICATION

B	21.06.16	Amendment references added. Material Key Updated. Issued to Planning	EN	DPD
A	15.04.16	Amendment references added. Material Key Updated. Issued to CBRE	BM	DPD
rev.	date	notes	drn	aud

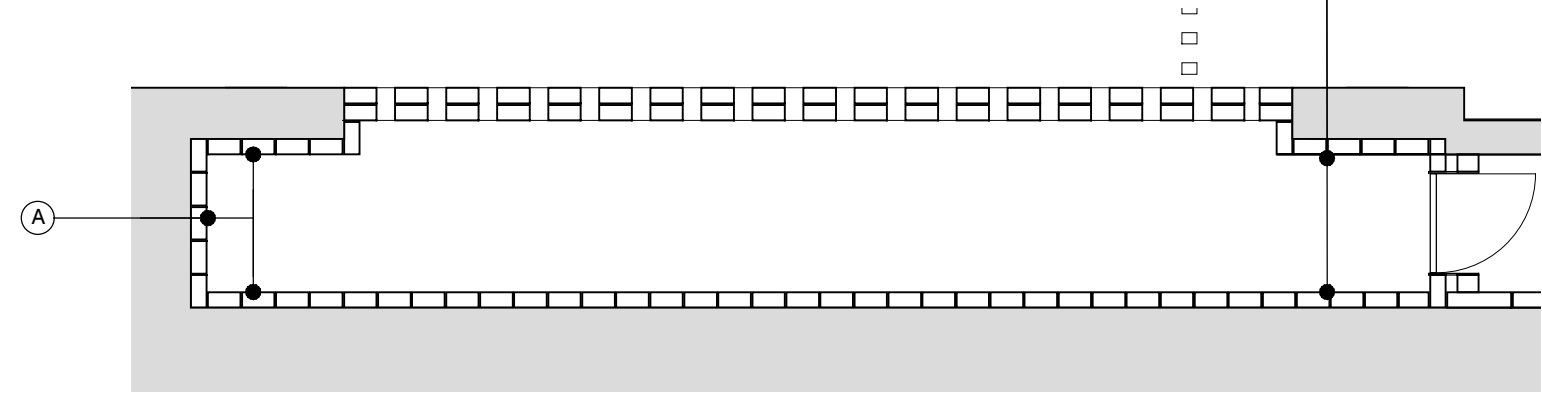
drawing status					PLANNING	
Diespeker Wharf 38 Graham Street London N1 8JX			<b>PTEa</b> POLLARD THOMAS EDWARDS architects			
t:	020 7336 7777	w:	www.ptea.co.uk			
f:	020 7336 0770	e:	forename.surname@ptea.co.uk			
project	ABBEY AREA REGENERATION-PHASE 1 LONDON	job no.	12_510	drawn	EG	
		audited	DPD	scale	1:50@A1	
date	JUL 13					
dwg title	CONCIERGE	dwg no.	510_1_PL_409	rev	B	



SECTION DETAIL 01



ELEVATION

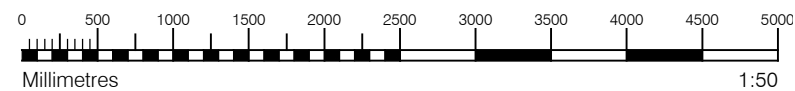


PLAN

**MATERIAL KEY**

- A** - Brick work type 1: TYPE TO BE AGREED, stretcher bond brickwork with Cemex London White mortar or similar. Openings to have a deep brick reveal (approx 190mm unless stated otherwise).
- B** - Brick work type 2: TYPE TO BE AGREED but darker than Type 1, stretcher bond brickwork with Cemex London White mortar or similar. Allow for darker mortar to recessed brick walls. Openings to have a deep brick reveal (approx 190mm unless stated otherwise).
- E** - Shop front frameless glass curtain walling with 75mm aluminum capping at base, bronze effect aluminum framed double or triple glazed doors to match. Louvred panels to be same finish.
- F** - Windows / doors: bronze effect aluminum framed double or triple glazed units (manufacturer to be agreed).
- I** - Metal Railing Balustrade: formed from PPC vertical flats (approx 65 x 8mm)
- N** - Hit and miss brickwork wall to basement cycle store - free area to meet ventilation requirements to basement
- Y** - Brick work type 2: Slightly recessed brick wall with stepped brick coursing

For specification, refer to Condition 26 parts (a) + (b) decision notice dated 22 October 2015, ref: 2015/3878/p



S73 APPLICATION											
rev.	date	notes	drn	aud	EN	DPD					
B	21.06.16	Amendment references added. Material Key Updated. Issued to Planning			EN	DPD					
A	15.04.16	Amendment references added. Material Key Updated. Issued to Planning			BM	DPD					
drawing status: <b>PLANNING</b>											
Diespeker Wharf 38 Graham Street London N1 8JX				<b>PTEa</b> POLLARD THOMAS EDWARDS architects							
t: 020 7336 7777 f: 020 7336 0770		w: www.ptea.co.uk e: forename.surname@ptea.co.uk									
project	ABBEY AREA REGENERATION-PHASE 1 LONDON	job no.	12_510	drawn	EG	audited	DPD	scale	1:50@A1	date	JUL 13
dwg title	VENTILATION VOID	dig. no.	510_1_PL_410	rev	B						