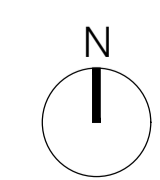
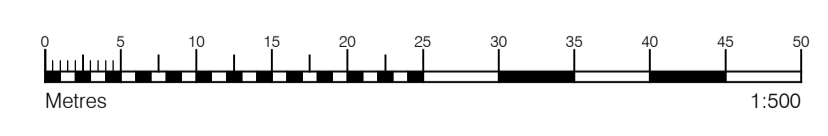

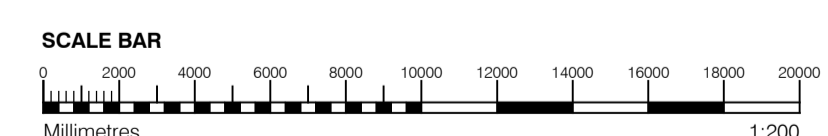
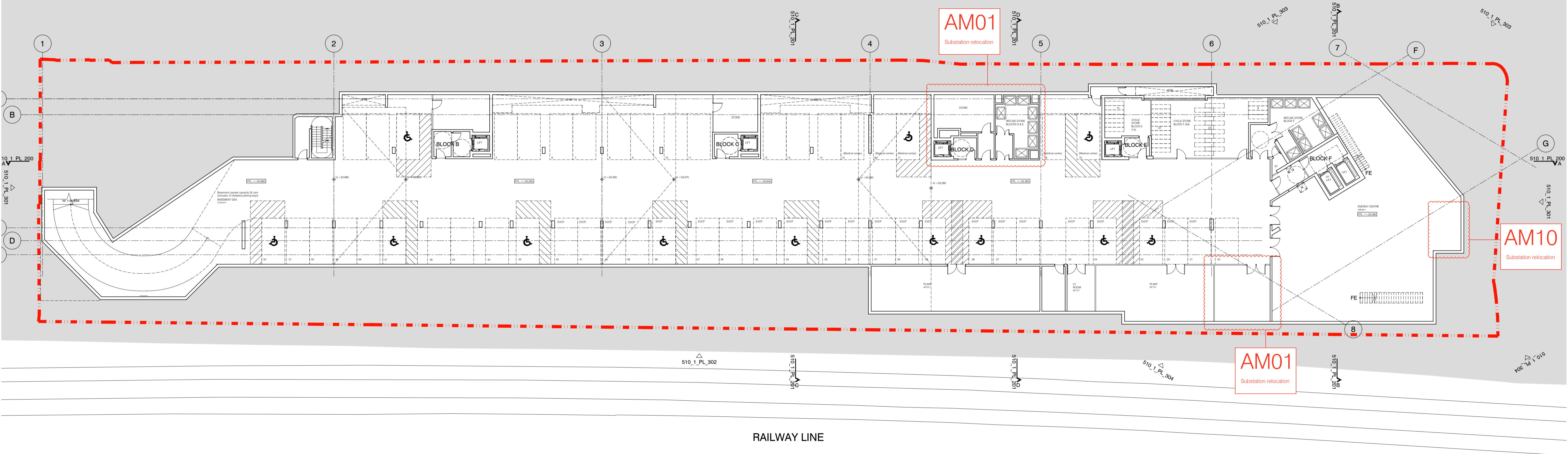


**AM01**  
Substation/  
Comm. unit size

**AM11**  
Boundary wall



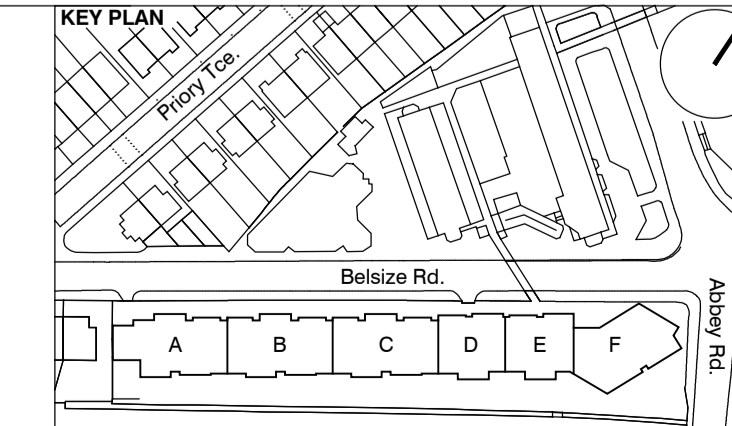
S73 APPLICATION											
E	21.06.16	Amendment references added. Issued to planning	EN	DPD							
D	15.04.16	Amendment references added. Issued to CBRE	DPD	DB							
C	17.12.15	Amendment references added. Issued to CBRE	PJ	DPD							
B	04.10.13	Concierge amendments, FE & levels	BM	DPD							
A	30.08.13	Drawing amended and issued to design team for comment.	FL	DPD							
rev.	date	description	dm	aud							
drawing status											
<b>PLANNING</b>											
Diespeker Wharf 38 Graham Street London N1 8JX				 <b>POLLARD THOMAS EDWARDS architects</b>							
project	ABBEY AREA REGENERATION - PHASE 1	job no.	12_510	drawn	BM	audited	DPD	scale	1:500 @ A1	date	JUL 13
dwg title	GENERAL ARRANGEMENT		510_1_PL_001		rev.	E					
SITE PLAN											



- GENERAL NOTES**
- This drawing is copyright of PTE architects
  - Use figured dimensions only. DO NOT SCALE.
  - All dimensions are in millimetres unless noted otherwise
  - All levels are in metres above ordnance datum unless noted otherwise
  - This drawing must be read in conjunction with all other relevant drawings and specifications from the Architect and other consultants
- NOTES**
- All setting out to be confirmed on site prior to construction - any discrepancy must be immediately reported to the Architect.

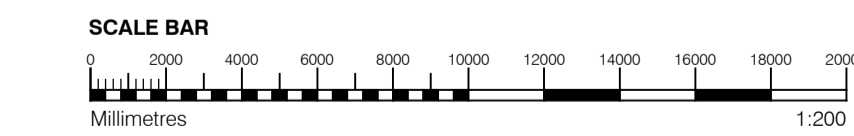
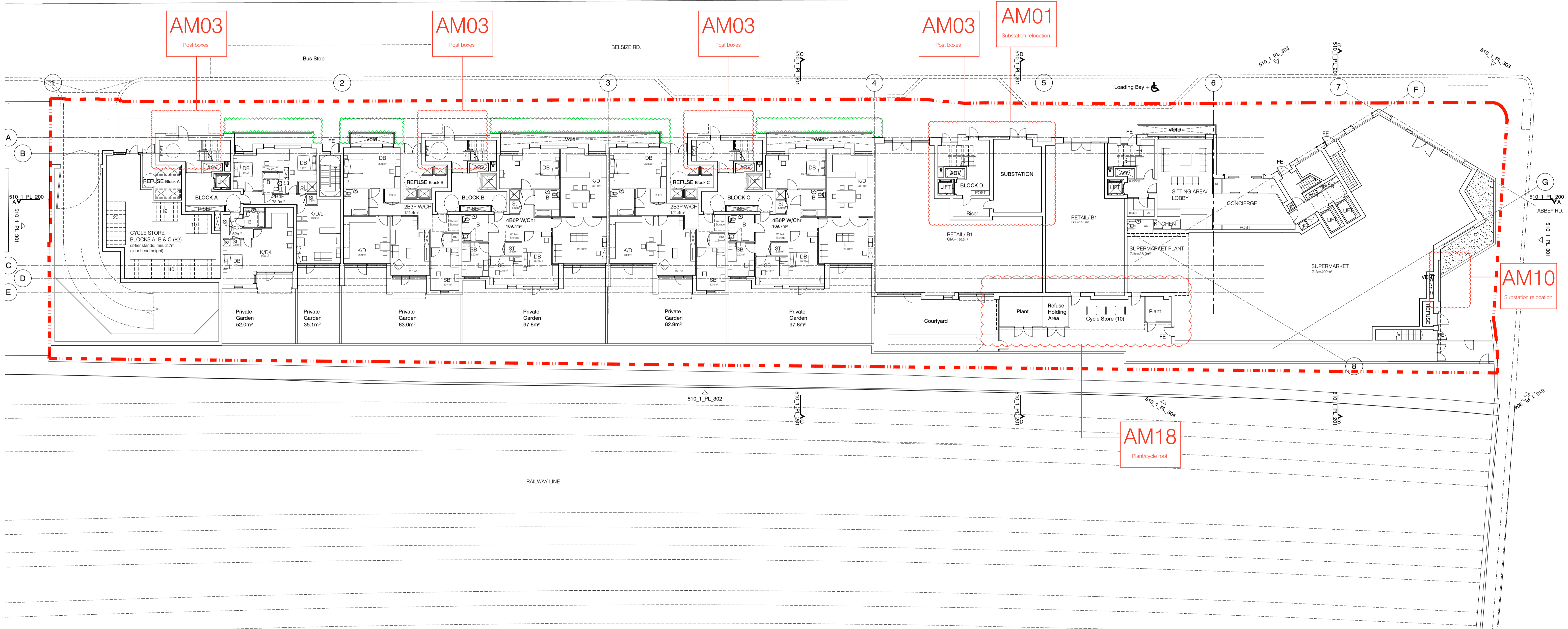
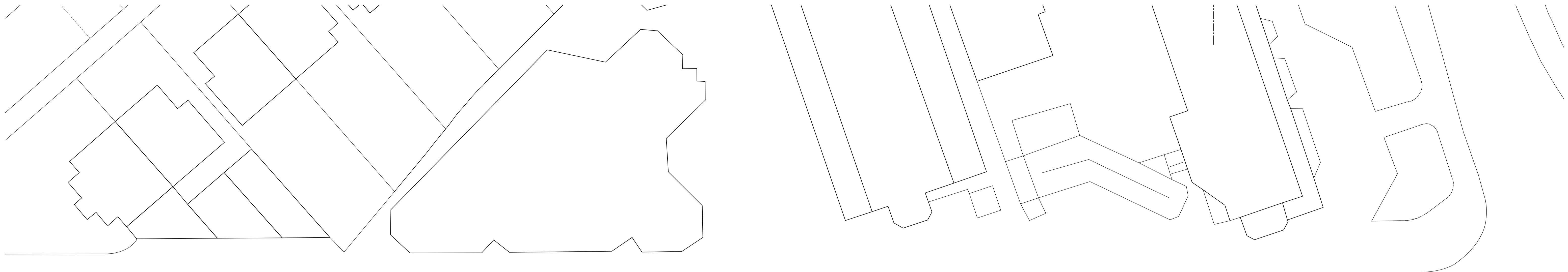
- MATERIAL KEY**
- A** - Brick work type 1: Red Brick, stretcher bond with light colour mortar. Openings to have a deep brick reveal (approx 190mm unless stated otherwise).
  - B** - Brick work type 2: Reflective blue/purple Brick, stretcher bond with dark grey mortar. Openings to have a deep brick reveal (approx 190mm unless stated otherwise).
  - C** - Brick work type 3: White glazed brick, stack bonded with white colour mortar, to Block F recessed balconies.
  - D** - Metal panel: bronze effect panels with hidden fixings and minimal joints.
  - E** - Shop front frameless glass curtain walling with 75mm aluminum capping at base, bronze effect aluminum framed double or triple glazed doors to match.
  - F** - Windows / doors: PPC aluminum framed double or triple glazed units (manufacturer to be agreed).
  - G** - Canopies: Pre-formed metal boxed canopy in bronze metallic finish with hidden structure and integral lighting.
  - H** - Perforated metal balustrade or privacy screen: perforated metal (bronze metallic finish) supported off PPC coated frame with hidden fixings and minimal joints - allow for non-uniform setting out of perforations - details to be agreed.

- I** - Metal Railing Balustrade: formed from PPC vertical flats (approx 50 x 12mm).
- J** - Metal Railing Balustrade: formed from PPC vertical flats (approx 50 x 12mm) extending to balcony soffit with metal plate fascia fixed to balcony edge.
- K** - Precast concrete or stone coping to parapet wall - allow for reinforcement back to structure.
- L** - Glass balustrade: frameless glass with no visible fixings.
- M** - Brick work type 4: Green Glazed brickwork, stack bonded to residential entrances
- N** - Hit and miss brickwork wall to basement cycle store - free area to meet ventilation requirements to basement.
- O** - 1.2 m high Fagus sylvatica (beech) instant hedge planted in a double staggered row.
- P** - Reconstituted Stone on fixing ancon bracket to form architrave detail to concierge/supermarket/retail entrances.
- Q** - Aluminium PPC louvred doors/panels to refuse store/car park ramp/fire exits/substation/vent intake or exhaust locations.
- R** - Brick work type 5: Slightly recessed brick wall with stepped brick coursing.
- S** - Close boarded timber fence to meet Acoustic requirements.
- T** - Brick work type 5: Reduced specification / off-shade brick wall forming retaining structure.



S73 APPLICATION			
rev	date	description	am aud
E	21.06.16	Amendment references added. Issued to planning	EN DPD
D	15.04.16	Amendment references added. Material Key updated. Issued to CBRE	DPD DB
C	18.12.15	Amendment references added. Issued to planning	BM DPD
B	04.10.13	Block F layout updates / parking & cycling spaces	BM DPD
A	30.08.13	Drawing amended and issued to design team for comment.	RL DPD

PLANNING					
Dispeker Wharf 38 Graham Street London N1 8JX t: 020 7336 7777 w: www.ptea.co.uk f: 020 7336 0770 e: forename.surname@ptea.co.uk					
<b>PTEa</b> POLLARD THOMAS EDWARDS architects					
project: ABBEY AREA REGENERATION - PHASE 1 drawing title: GENERAL ARRANGEMENT BASEMENT FLOOR PLAN	job no.: 12_510 drawn: BM checked: DPD scale: 1:200 @ A1 date: JUL 13	drawing no.: 510_1_PL_099 rev: E			



**GENERAL NOTES**

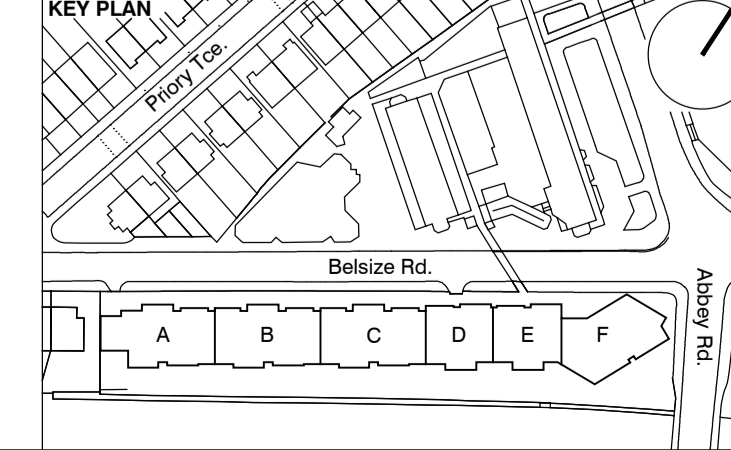
- This drawing is copyright of PTE architects
- Use figured dimensions only. DO NOT SCALE.
- All dimensions are in millimetres unless noted otherwise
- All levels are in metres above ordnance datum unless noted otherwise
- This drawing must be read in conjunction with all other relevant drawings and specifications from the Architect and other consultants

**NOTES**

- All setting out to be confirmed on site prior to construction - any discrepancy must be immediately reported to the Architect.

**MATERIAL KEY**

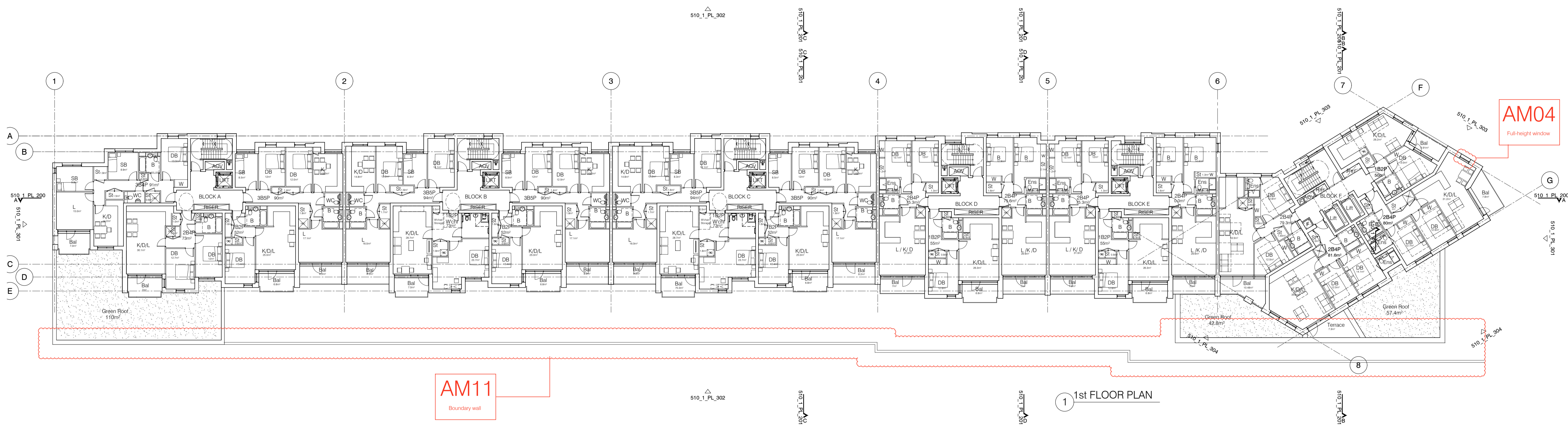
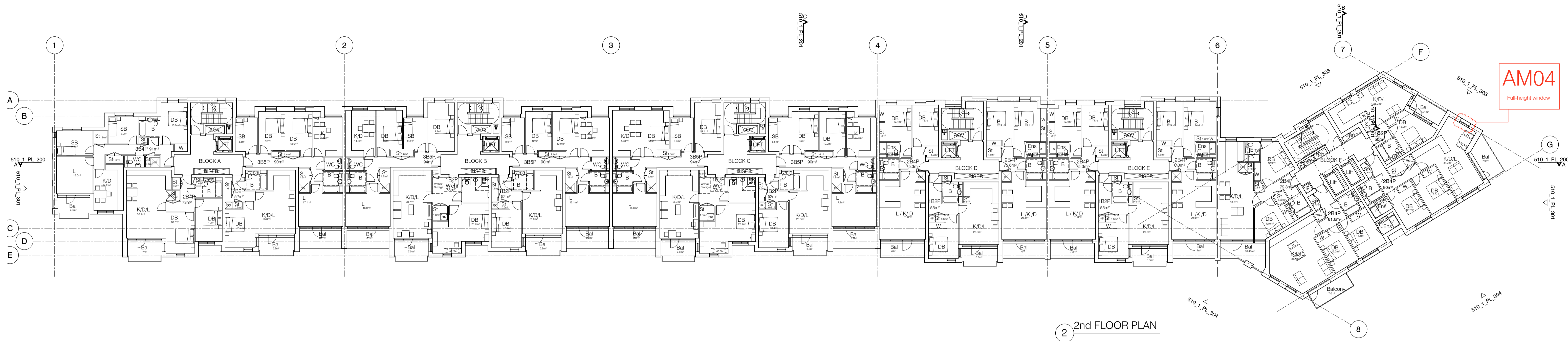
- A** - Brick work type 1: Red Brick, stretcher bond with light colour mortar. Openings to have a deep brick reveal (approx 190mm unless stated otherwise).
- B** - Brick work type 2: Reflective blue/purple Brick, stretcher bond with dark grey mortar. Openings to have a deep brick reveal (approx 190mm unless stated otherwise).
- C** - Brick work type 3: White glazed brick, stack bonded with white colour mortar, to Block F recessed balconies.
- D** - Metal panel: bronze effect panels with hidden fixings and minimal joints.
- E** - Shop front frameless glass curtain walling with 75mm aluminum capping at base, bronze effect aluminum framed double or triple glazed doors to match.
- F** - Windows / doors: PPC aluminum framed double or triple glazed units (manufacturer to be agreed).
- G** - Canopies: Pre-formed metal boxed canopy in bronze metallic finish with hidden structure and integral lighting.
- H** - Perforated metal balustrade or privacy screen: perforated metal (bronze metallic finish) supported off PPC coated frame with hidden fixings and minimal joints - allow for non-uniform setting out of perforations - details to be agreed.
- I** - Metal Railing Balustrade: formed from PPC vertical flats (approx 50 x 12mm).
- J** - Metal Railing Balustrade: formed from PPC vertical flats (approx 50 x 12mm) extending to balcony soffit with metal plate fascia fixed to balcony edge.
- K** - Precast concrete or stone coping to parapet wall - allow for reinforcement back to structure.
- L** - Glass balustrade: frameless glass with no visible fixings.
- M** - Brick work type 4: Green Glazed brickwork, stack bonded to residential entrances
- N** - Hit and miss brickwork wall to basement cycle store - free area to meet ventilation requirements to basement.
- O** - 1.2 m high Fagus sylvatica (beech) instant hedge planted in a double staggered row.
- P** - Reconstituted Stone on fixing ancon bracket to form architrave detail to concierge/supermarket/retail entrances.
- Q** - Aluminium PPC louvred doors/panels to refuse store/car park ramp/fire exits/substation/vent intake or exhaust locations.
- R** - Brick work type 2: Slightly recessed brick wall with stepped brick coursing.
- S** - Close boarded timber fence to meet Acoustic requirements.
- T** - Brick work type 5: Reduced specification / off-shade brick wall forming retaining structure.



S73 APPLICATION		EN	DPD
E	21.06.16	Amendment references added. Issued to planning	EN
D	15.04.16	Amendment references added. Material Key updated. Issued to CBRE	DPD
C	18.12.15	Amendment references added. Issued to planning	BM
B	04.10.13	Block F layout updates / Concierge & entrance updates	BM
A	30.08.13	Drawing amended and issued to design team for comment.	RL
			DPD
rev	date	description	dm
			aud

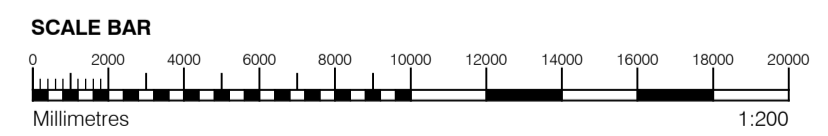
drawing status		PLANNING		date	
project	ABBEY AREA REGENERATION - PHASE 1	job no.	12_510	scale	1:200 @ A1
client	Dienspeker Wharf 38 Graham Street London N1 8JX	drawn	PT	audited	DPD
t:	020 7336 7777	w:	www.ptea.co.uk	date	JUL 13
f:	020 7336 0770	e:	forename.surname@ptea.co.uk	rev	E
sheet title	GENERAL ARRANGEMENT GROUND FLOOR PLAN	fig no.	510_1_PL_100		



AM04  
Full-height window

AM04  
Full-height window

AM11  
Boundary wall



**GENERAL NOTES**

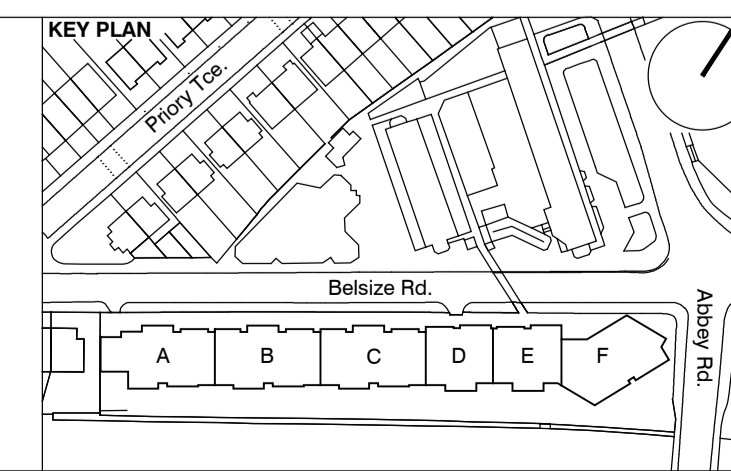
- This drawing is copyright of PTE architects
- Use figured dimensions only. DO NOT SCALE.
- All dimensions are in millimetres unless noted otherwise
- All levels are in metres above ordnance datum unless noted otherwise
- This drawing must be read in conjunction with all other relevant drawings and specifications from the Architect and other consultants

**NOTES**

- All setting out to be confirmed on site prior to construction - any discrepancy must be immediately reported to the Architect.

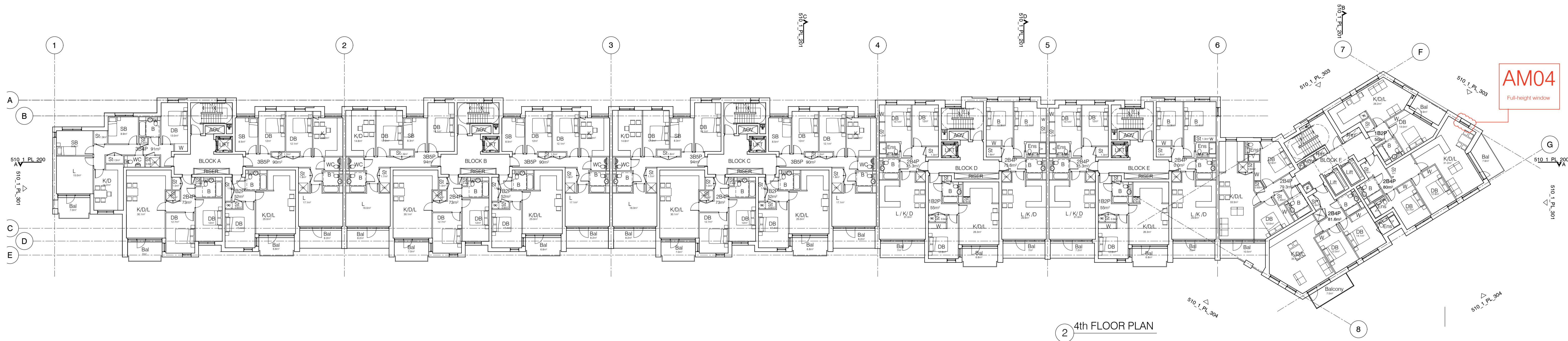
**MATERIAL KEY**

- A** - Brick work type 1: Red Brick, stretcher bond with light colour mortar. Openings to have a deep brick reveal (approx 190mm unless stated otherwise).
- B** - Brick work type 2: Reflective blue/purple Brick, stretcher bond with dark grey mortar. Openings to have a deep brick reveal (approx 190mm unless stated otherwise).
- C** - Brick work type 3: White glazed brick, stack bonded with white colour mortar, to Block F recessed balconies.
- D** - Metal panel: bronze effect panels with hidden fixings and minimal joints.
- E** - Shop front frameless glass curtain walling with 75mm aluminum capping at base, bronze effect aluminum framed double or triple glazed doors to match.
- F** - Windows / doors: PPC aluminum framed double or triple glazed units (manufacturer to be agreed).
- G** - Canopies: Pre-formed metal boxed canopy in bronze metallic finish with hidden structure and integral lighting.
- H** - Perforated metal balustrade or privacy screen: perforated metal (bronze metallic finish) supported off PPC coated frame with hidden fixings and minimal joints - allow for non-uniform setting out of perforations - details to be agreed.
- I** - Metal Railing Balustrade: formed from PPC vertical flats (approx 50 x 12mm).
- J** - Metal Railing Balustrade: formed from PPC vertical flats (approx 50 x 12mm) extending to balcony soffit with metal plate fascia fixed to balcony edge.
- K** - Precast concrete or stone coping to parapet wall - allow for reinforcement back to structure.
- L** - Glass balustrade: frameless glass with no visible fixings.
- M** - Brick work type 4: Green Glazed brickwork, stack bonded to residential entrances
- N** - Hit and miss brickwork wall to basement cycle store - free area to meet ventilation requirements to basement.
- O** - 1.2 m high Fagus sylvatica (beech) instant hedge planted in a double staggered row.
- P** - Reconstituted Stone on fixing ancon bracket to form architrave detail to concierge/supermarket/retail entrances.
- Q** - Aluminium PPC louvred doors/panels to refuse store/car park ramp/fire exits/substation/vent intake or exhaust locations.
- R** - Brick work type 2: Slightly recessed brick wall with stepped brick coursing.
- S** - Close boarded timber fence to meet Acoustic requirements.
- T** - Brick work type 5: Reduced specification / off-shade brick wall forming retaining structure.

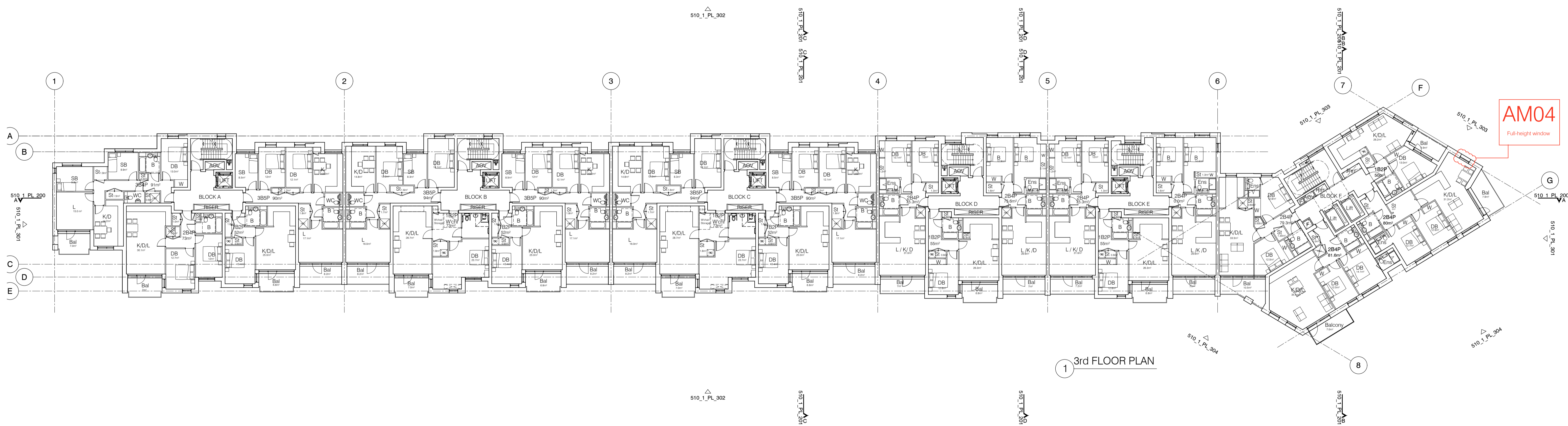


SECTION 73 APPLICATION			
E	21.06.16	Amendment references added. Material Key updated. Issued to planning	EN DPD
D	15.04.16	Amendment references added. Material Key updated. Issued to CBRE	DPD DB
C	18.12.15	Amendment references added. Issued to planning	BM DPD
B	04.10.13	Balcony area in Block A revised	BM DPD
A	30.08.13	Drawing amended and issued to design team for comment.	RL DPD
rev	date	description	dm aud

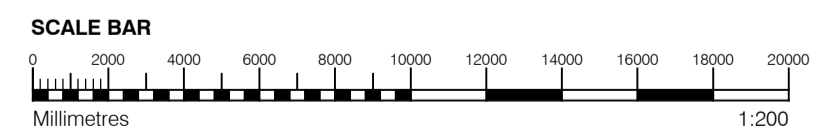
PLANNING			
drawing status			
Dienspeker Wharf 38 Graham Street London N1 8JX			
t:	020 7336 7777	w:	www.ptea.co.uk
f:	020 7336 0770	e:	forename.surname@ptea.co.uk
project	ABBEY AREA REGENERATION - PHASE 1	job no.	12_510
drawn	BM	audited	DPD
scale	1:200 @ A1	date	JUL 13
sheet title	GENERAL ARRANGEMENT 1st & 2nd FLOOR PLANS	fig. no.	510_1_PL_101
rev		date	E



2 4th FLOOR PLAN



1 3rd FLOOR PLAN



**GENERAL NOTES**

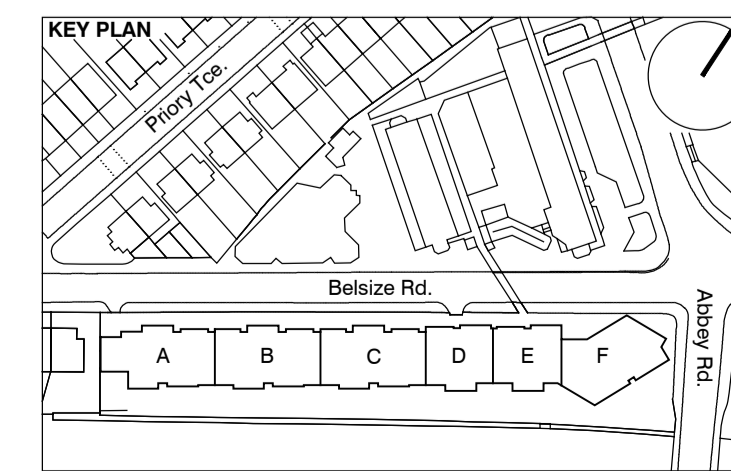
- This drawing is copyright of PTE architects
- Use figured dimensions only. DO NOT SCALE.
- All dimensions are in millimetres unless noted otherwise
- All levels are in metres above ordnance datum unless noted otherwise
- This drawing must be read in conjunction with all other relevant drawings and specifications from the Architect and other consultants

**NOTES**

- All setting out to be confirmed on site prior to construction - any discrepancy must be immediately reported to the Architect.

**MATERIAL KEY**

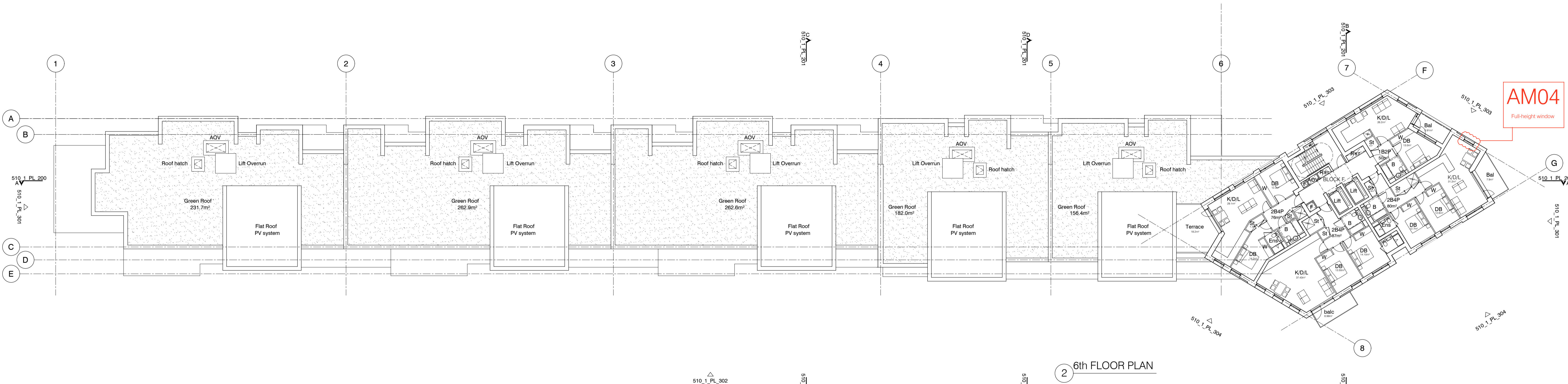
- A** - Brick work type 1: Red Brick, stretcher bond with light colour mortar. Openings to have a deep brick reveal (approx 190mm unless stated otherwise).
- B** - Brick work type 2: Reflective blue/purple Brick, stretcher bond with dark grey mortar. Openings to have a deep brick reveal (approx 190mm unless stated otherwise).
- C** - Brick work type 3: White glazed brick, stack bonded with white colour mortar, to Block F recessed balconies.
- D** - Metal panel: bronze effect panels with hidden fixings and minimal joints.
- E** - Shop front frameless glass curtain walling with 75mm aluminum capping at base, bronze effect aluminum framed double or triple glazed units to match.
- F** - Windows / doors: PPC aluminum framed double or triple glazed units (manufacturer to be agreed).
- G** - Canopies: Pre-formed metal boxed canopy in bronze metallic finish with hidden structure and integral lighting.
- H** - Perforated metal balustrade or privacy screen: perforated metal (bronze metallic finish) supported off PPC coated frame with hidden fixings and minimal joints - allow for non-uniform setting out of perforations - details to be agreed.
- I** - Metal Railing Balustrade: formed from PPC vertical flats (approx 50 x 12mm).
- J** - Metal Railing Balustrade: formed from PPC vertical flats (approx 50 x 12mm) extending to balcony soffit with metal plate fascia fixed to balcony edge.
- K** - Precast concrete or stone coping to parapet wall - allow for reinforcement back to structure.
- L** - Glass balustrade: frameless glass with no visible fixings.
- M** - Brick work type 4: Green Glazed brickwork, stack bonded to residential entrances
- N** - Hit and miss brickwork wall to basement cycle store - free area to meet ventilation requirements to basement.
- O** - 1.2 m high Fagus sylvatica (beech) instant hedge planted in a double staggered row.
- P** - Reconstituted Stone on fixing ancon bracket to form architrave detail to concierge/supermarket/retail entrances.
- Q** - Aluminium PPC louvred doors/panels to refuse store/car park ramp/fire exits/substation/vent intake or exhaust locations.
- R** - Brick work type 2: Slightly recessed brick wall with stepped brick coursing.
- S** - Close boarded timber fence to meet Acoustic requirements.
- T** - Brick work type 5: Reduced specification / off-shade brick wall forming retaining structure.



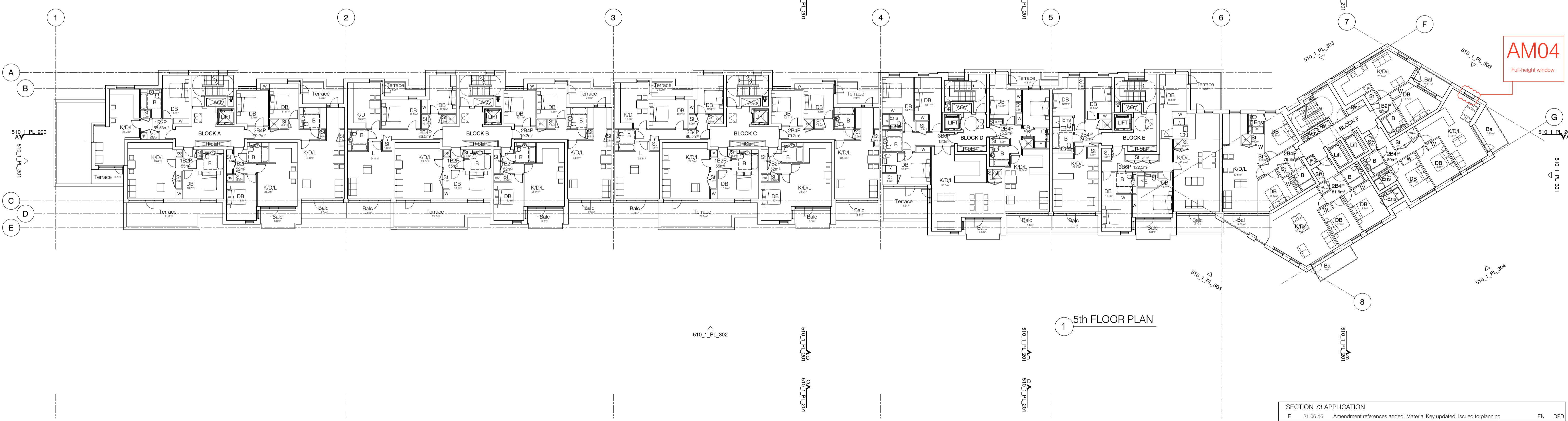
SECTION 73 APPLICATION			
E	21.06.16	Amendment references added. Material Key updated. Issued to planning	EN DPD
D	15.04.16	Amendment references added. Material Key updated. Issued to CBRE	DPD DB
C	18.12.15	Amendment references added. Issued to planning	BM DPD
B	04.10.13	Balcony area in Block A revised	BM DPD
A	30.08.13	Drawing amended and issued to design team for comment.	RL DPD
rev	date	description	dm aud

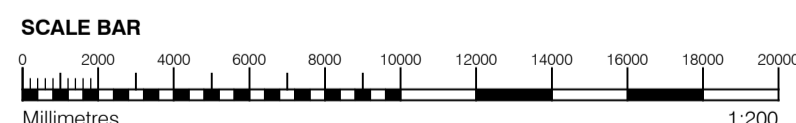
PLANNING			
drawing status			
Diespeker Wharf 38 Graham Street London N1 8JX			
t:	020 7336 7777	w:	www.ptea.co.uk
f:	020 7336 0770	e:	forename.surname@ptea.co.uk
project	ABEY AREA REGENERATION - PHASE 1	job no.	12_510
drawn	BM	audited	DPD
scale	1:200 @ A1	date	JUL 13
sheet title	GENERAL ARRANGEMENT 3rd & 4th FLOOR PLANS	fig no.	510_1_PL_102
rev			E



② 6th FLOOR PLAN



① 5th FLOOR PLAN



**GENERAL NOTES**

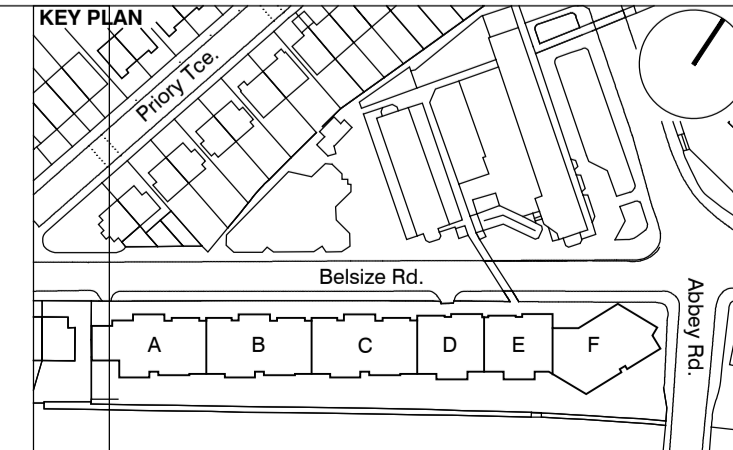
- This drawing is copyright of PTE architects
- Use figured dimensions only, DO NOT SCALE.
- All dimensions are in millimetres unless noted otherwise
- All levels are in metres above Ordnance datum unless noted otherwise
- This drawing must be read in conjunction with all other relevant drawings and specifications from the Architect and other consultants

**NOTES**

- All setting out to be confirmed on site prior to construction - any discrepancy must be immediately reported to the Architect.

**MATERIAL KEY**

- A** - Brick work type 1: Red Brick, stretcher bond with light colour mortar. Openings to have a deep brick reveal (approx 190mm unless stated otherwise).
- B** - Brick work type 2: Reflective blue/purple Brick, stretcher bond with dark grey mortar. Openings to have a deep brick reveal (approx 190mm unless stated otherwise).
- C** - Brick work type 3: White glazed brick, stack bonded with white colour mortar, to Block F recessed balconies.
- D** - Metal panel: bronze effect panels with hidden fixings and minimal joints.
- E** - Shop front frameless glass curtain walling with 75mm aluminum capping at base, bronze effect aluminum framed double or triple glazed doors to match.
- F** - Windows / doors: PPC aluminum framed double or triple glazed units (manufacturer to be agreed).
- G** - Canopies: Pre-formed metal boxed canopy in bronze metallic finish with hidden structure and integral lighting.
- H** - Perforated metal balustrade or privacy screen: perforated metal (bronze metallic finish) supported off PPC coated frame with hidden fixings and minimal joints - allow for non-uniform setting out of perforations - details to be agreed.
- I** - Metal Railing Balustrade: formed from PPC vertical flats (approx 50 x 12mm).
- J** - Metal Railing Balustrade: formed from PPC vertical flats (approx 50 x 12mm) extending to balcony soffit with metal plate fascia fixed to balcony edge.
- K** - Precast concrete or stone coping to parapet wall - allow for reinforcement back to structure.
- L** - Glass balustrade: frameless glass with no visible fixings.
- M** - Brick work type 4: Green Glazed brickwork, stack bonded to residential entrances
- N** - Hit and miss brickwork wall to basement cycle store - free area to meet ventilation requirements to basement.
- O** - 1.2 m high Fagus sylvatica (beech) instant hedge planted in a double staggered row.
- P** - Reconstituted Stone on fixing ancon bracket to form architrave detail to concierge/supermarket/retail entrances.
- Q** - Aluminium PPC louvred doors/panels to refuse store/car park ramp/fire exits/substation/vent intake or exhaust locations.
- R** - Brick work type 2: Slightly recessed brick wall with stepped brick coursing.
- S** - Close boarded timber fence to meet Acoustic requirements.
- T** - Brick work type 5: Reduced specification / off-shade brick wall forming retaining structure.

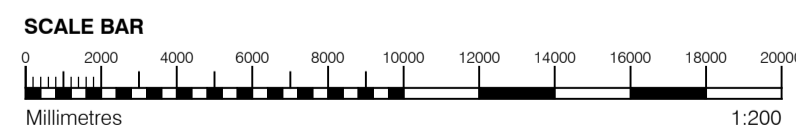
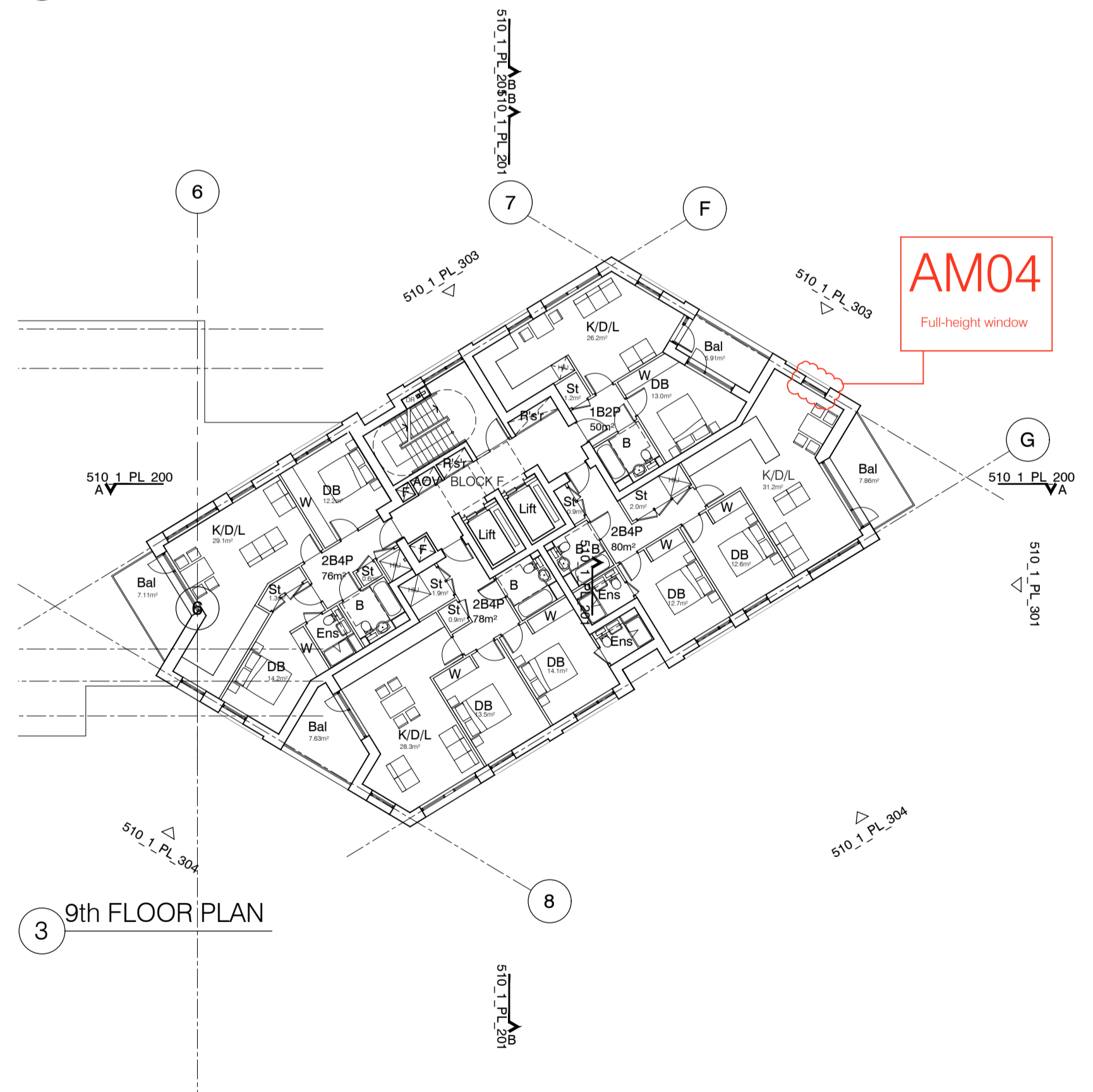
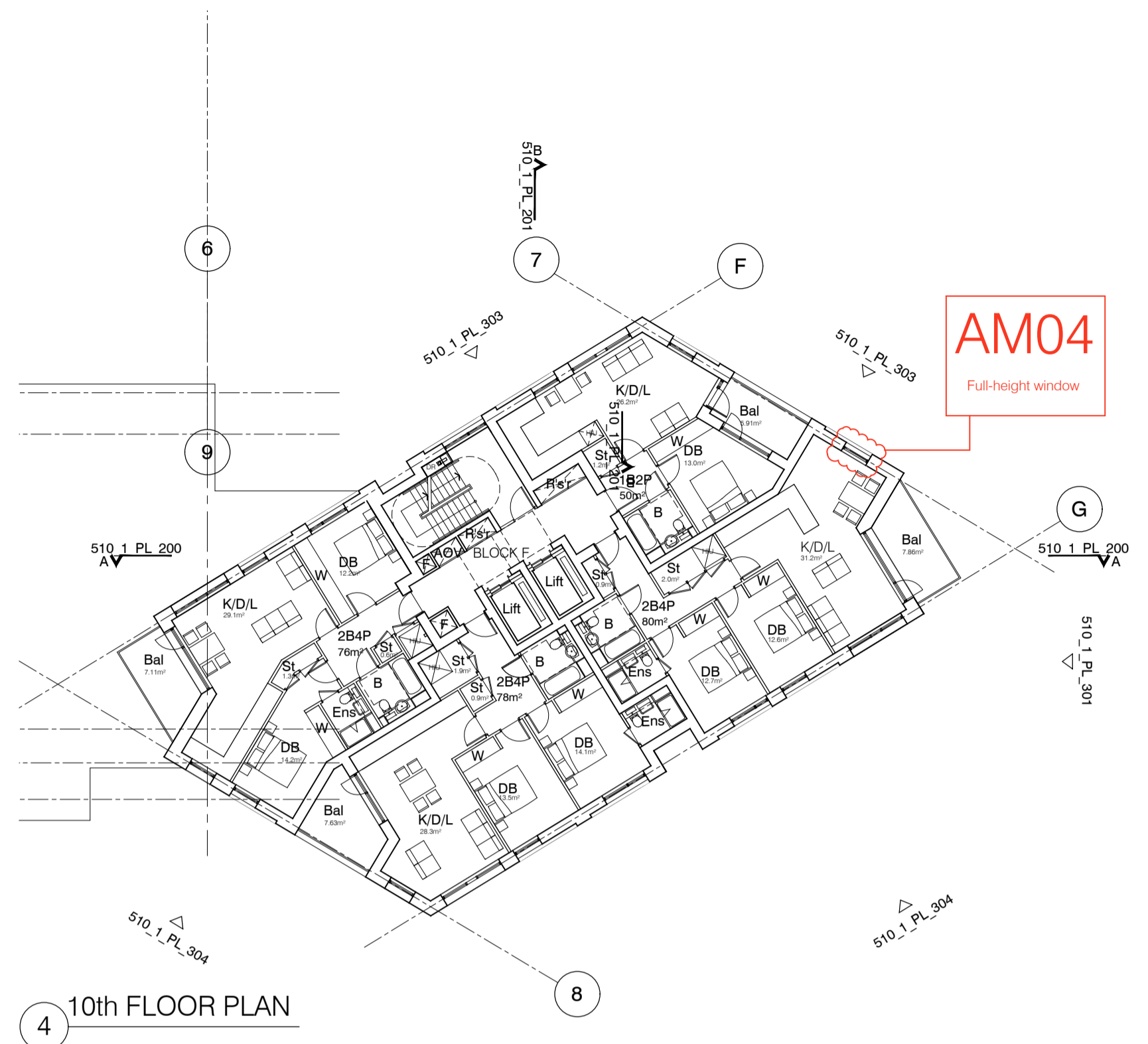
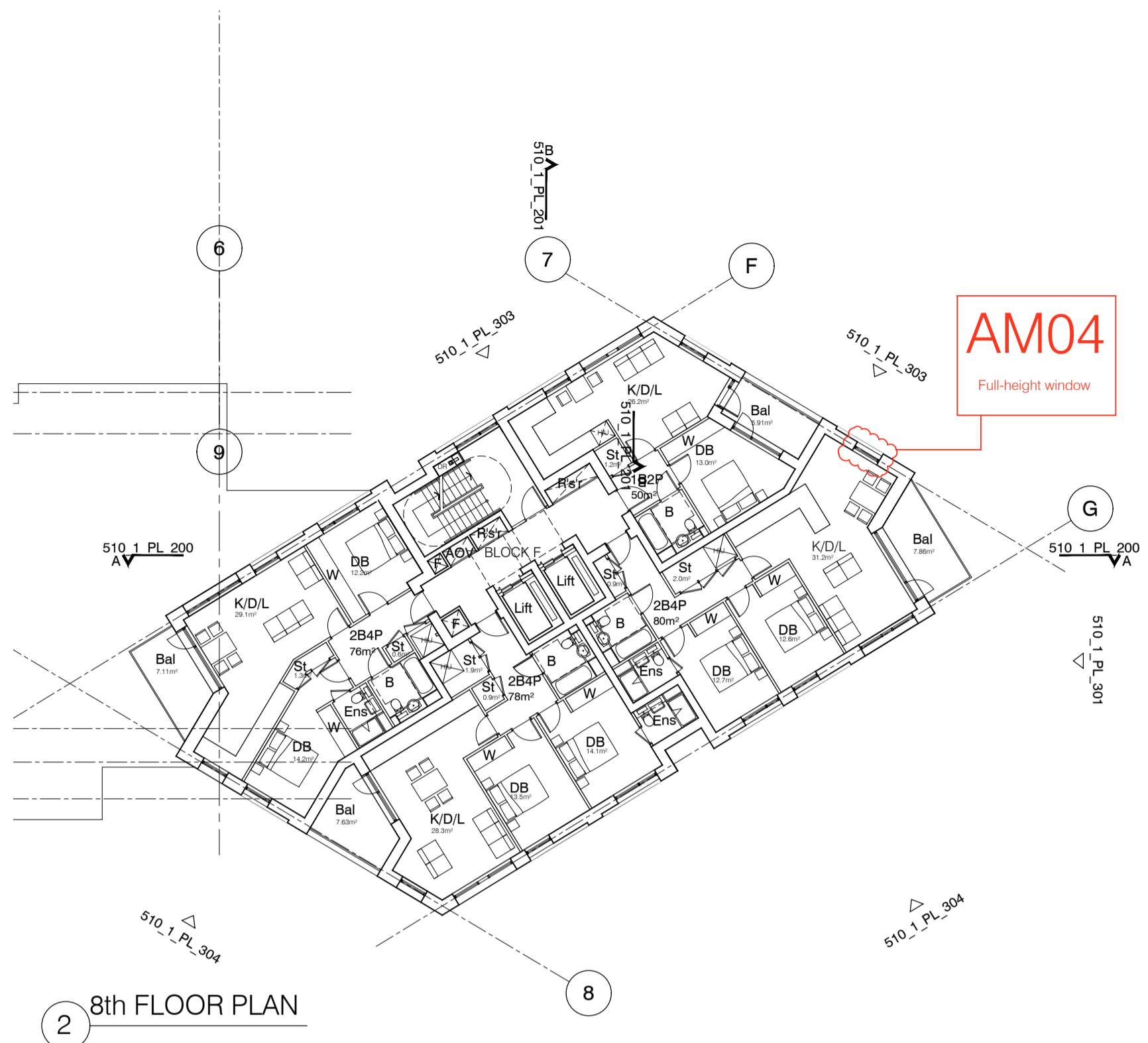


**SECTION 73 APPLICATION**

rev.	date	description	dm	aut
E	21.06.16	Amendment references added. Material Key updated. Issued to planning	EN	DPD
D	15.04.16	Amendment references added. Material Key updated. Issued to CBRE	DPD	DB
C	18.12.15	Amendment references added. Issued to planning	BM	DPD
B	04.10.13	Windows amendments in Southern Elevation	BM	DPD
A	30.08.13	Drawing amended and issued to design team for comment.	RL	DPD

**PLANNING**

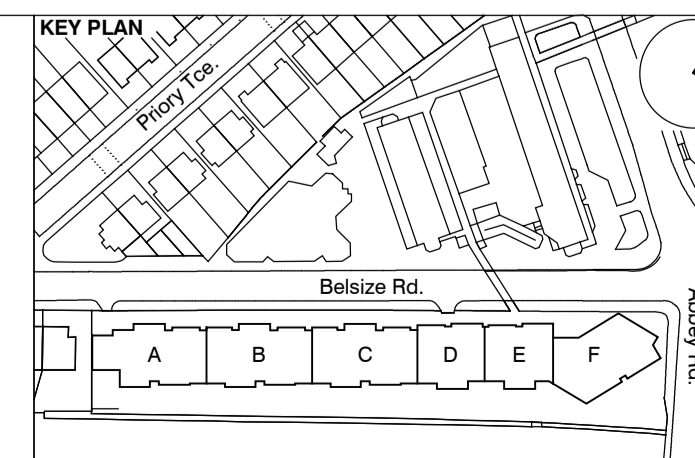
drawing status		Dispeker Wharf 38 Graham Street London N1 8JX		<b>PTEa</b> POLLARD THOMAS EDWARDS architects	
project	ABBAY AREA REGENERATION - PHASE 1	drawn	PT	scale	1:200 @ A1
date	LONDON	checked	DPD	date	JUL 13
title	GENERAL ARRANGEMENT 5th & 6th FLOOR PLANS	date	12_510	rev	E
client	ABBAY AREA REGENERATION	scale	1:200 @ A1	date	JUL 13
drawing no.	510_1_PL_103	scale	1:200 @ A1	date	JUL 13
rev	E	scale	1:200 @ A1	date	JUL 13



- GENERAL NOTES**
- This drawing is copyright of PTE architects
  - Use figured dimensions only. DO NOT SCALE.
  - All dimensions are in millimetres unless noted otherwise
  - All levels are in metres above ordnance datum unless noted otherwise
  - This drawing must be read in conjunction with all other relevant drawings and specifications from the Architect and other consultants
- NOTES**
- All setting out to be confirmed on site prior to construction - any discrepancy must be immediately reported to the Architect.

**MATERIAL KEY**

- A** - Brick work type 1: Red Brick, stretcher bond with light colour mortar. Openings to have a deep brick reveal (approx 100mm unless stated otherwise).
- B** - Brick work type 2: Reflective blue/purple Brick, stretcher bond with dark grey mortar. Openings to have a deep brick reveal (approx 100mm unless stated otherwise).
- C** - Brick work type 3: White glazed brick, stack bonded with white colour mortar, to Block F recessed balconies.
- D** - Metal panel: bronze effect panels with hidden fixings and minimal joints.
- E** - Shop front frameless glass curtain walling with 75mm aluminium capping at base, bronze effect aluminium framed double or triple glazed doors to match.
- F** - Windows / doors: PPC aluminium framed double or triple glazed units (manufacturer to be agreed).
- G** - Canopies: Pre-formed metal boxed canopy in bronze metallic finish with hidden structure and integral lighting.
- H** - Perforated metal balustrade or privacy screen: perforated metal (bronze metallic finish) supported off PPC coated frame with hidden fixings and minimal joints - allow for non-uniform setting out of perforations - details to be agreed.
- I** - Metal Railing Balustrade: formed from PPC vertical flats (approx 50 x 12mm).
- J** - Metal Railing Balustrade: formed from PPC vertical flats (approx 50 x 12mm) extending to balcony soffit with metal plate fascia fixed to balcony edge.
- K** - Precast concrete or stone coping to parapet wall - allow for reinforcement back to structure.
- L** - Glass balustrade: frameless glass with no visible fixings.
- M** - Brick work type 4: Green Glazed brickwork, stack bonded to residential entrances
- N** - Hit and miss brickwork wall to basement cycle store - free area to meet ventilation requirements to basement.
- O** - 1.2 m high Fagus sylvatica (beech) instant hedge planted in a double staggered row.
- P** - Reconstituted Stone on fixing ancon bracket to form architrave detail to concierge/supermarket/retail entrances.
- Q** - Aluminium PPC louvered doors/panels to refuse store/car park ramp/fire exits/substation/vent intake or exhaust locations.
- R** - Brick work type 2: Slightly recessed brick wall with stepped brick coursing.
- S** - Close boarded timber fence to meet Acoustic requirements.
- T** - Brick work type 5: Reduced specification / off-shade brick wall forming retaining structure.

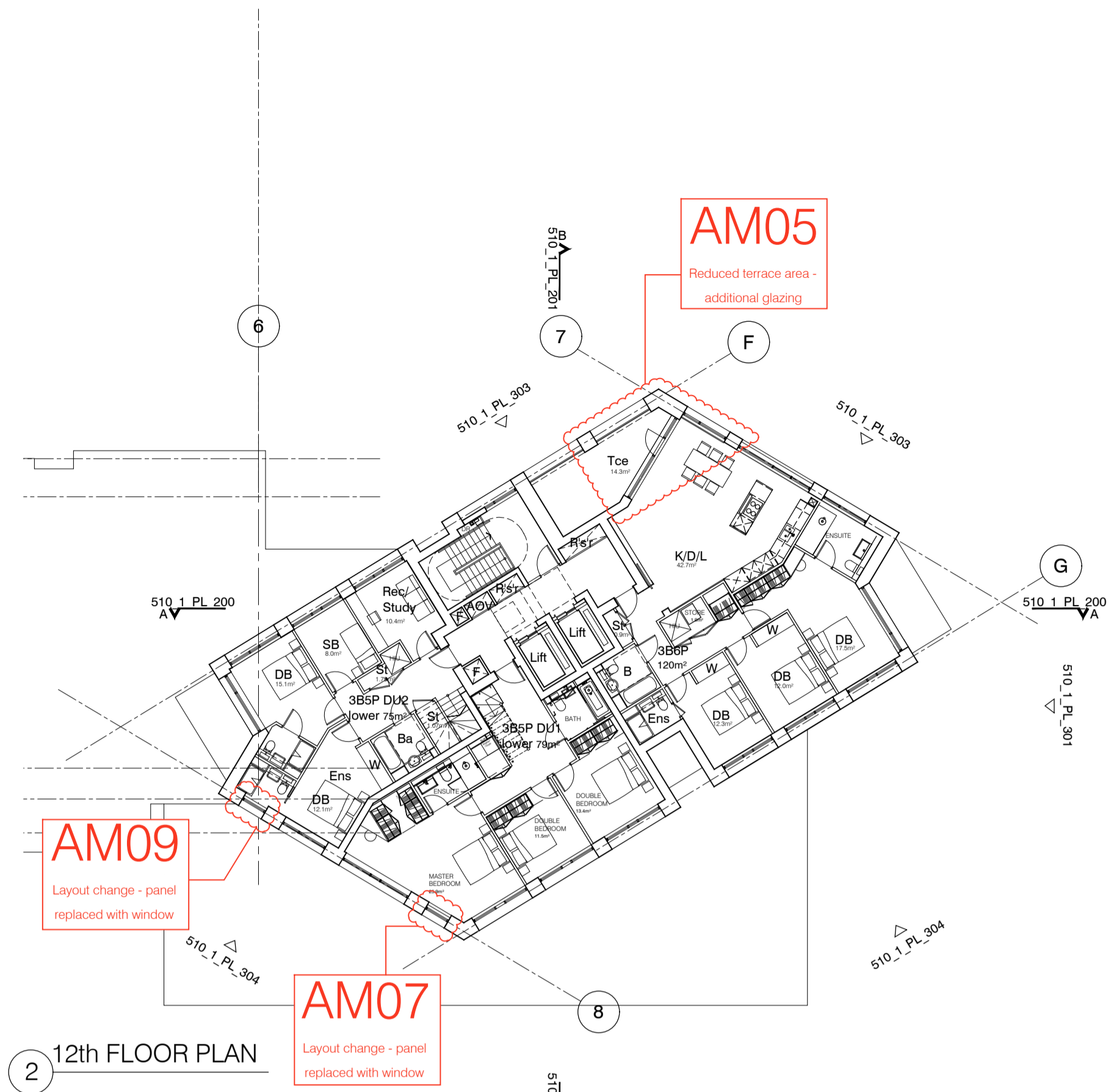


SECTION 73 APPLICATION			
C	21.06.16	Amendment references added. Material Key updated. Issued to planning	EN DPD
B	15.04.16	Amendment references added. Material Key updated. Issued to CBRE	DPD DB
A	18.12.15	Amendment references added. Issued to planning	BM DPD

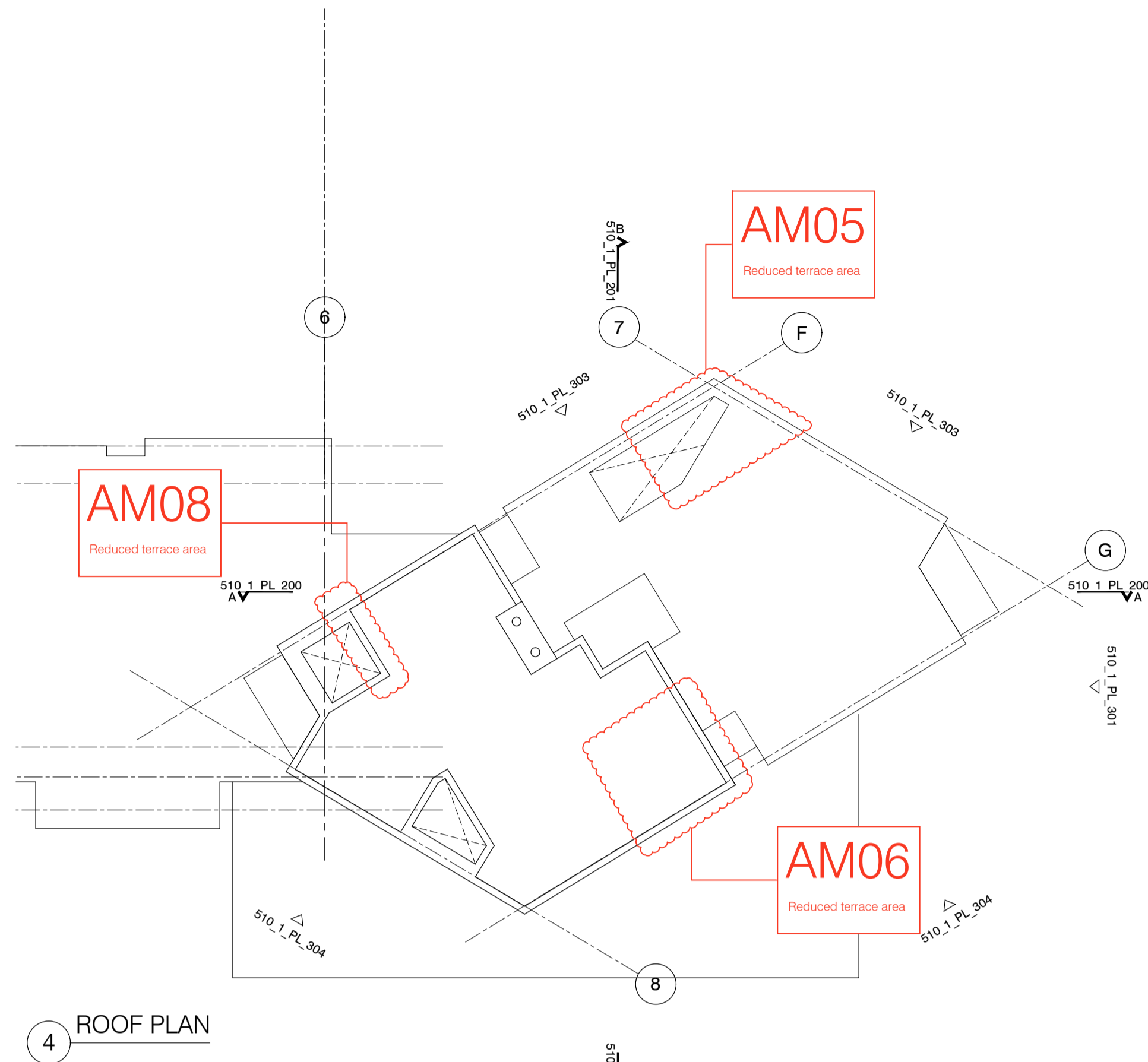
rev.	date	description	dm	aud
drawing status				

**PLANNING**

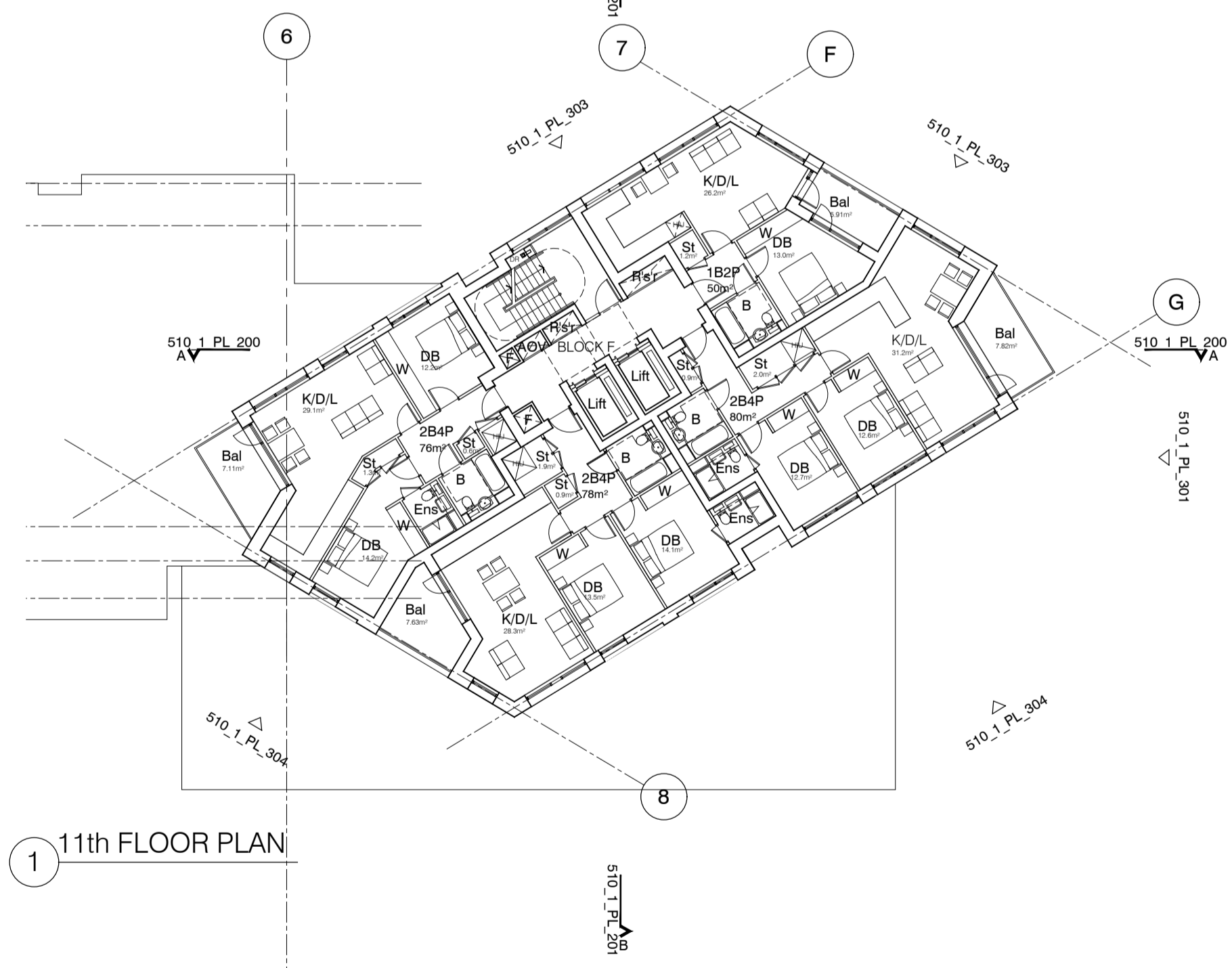
project ABBEY AREA REGENERATION - PHASE 1 LONDON		job no. 12_510	drawn PT	audited DPD	scale 1:200 @ A1	date JUL 13
client Diespeker Wharf 38 Graham Street London N1 8JX		t: 020 7336 7777 f: 020 7336 0770	w: www.ptea.co.uk e: forename.surname@ptea.co.uk			
drawing title GENERAL ARRANGEMENT 7th, 8th, 9th & 10th FLOOR PLANS		drawing no. 510_1_PL_104	revision C			



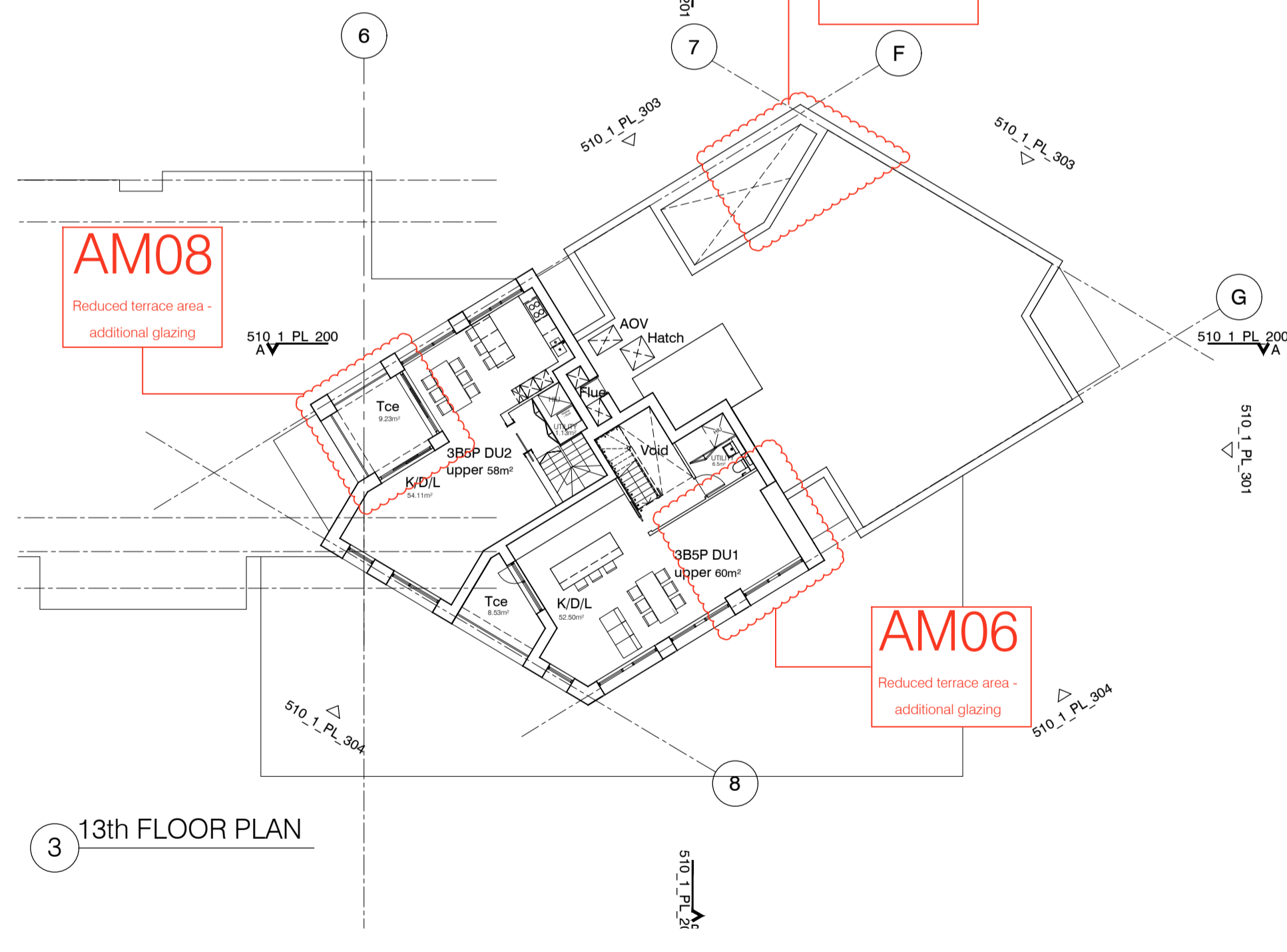
2 12th FLOOR PLAN



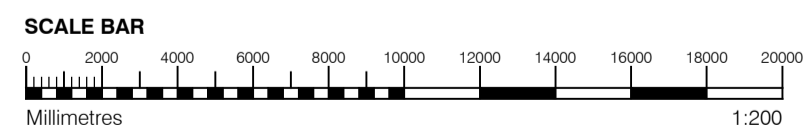
4 ROOF PLAN



1 11th FLOOR PLAN



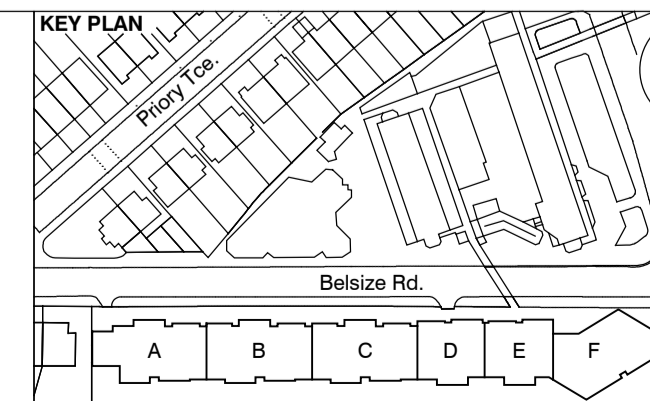
3 13th FLOOR PLAN



- GENERAL NOTES**
- This drawing is copyright of PTE architects
  - Use figured dimensions only. DO NOT SCALE.
  - All dimensions are in millimetres unless noted otherwise
  - All levels are in metres above ordnance datum unless noted otherwise
  - This drawing must be read in conjunction with all other relevant drawings and specifications from the Architect and other consultants
- NOTES**
- All setting out to be confirmed on site prior to construction - any discrepancy must be immediately reported to the Architect.

- MATERIAL KEY**
- A** - Brick work type 1: Red Brick, stretcher bond with light colour mortar. Openings to have a deep brick reveal (approx 190mm unless stated otherwise).
  - B** - Brick work type 2: Reflective blue/purple Brick, stretcher bond with dark grey mortar. Openings to have a deep brick reveal (approx 190mm unless stated otherwise).
  - C** - Brick work type 3: White glazed brick, stack bonded with white colour mortar, to Block F recessed balconies.
  - D** - Metal panel: bronze effect panels with hidden fixings and minimal joints.
  - E** - Shop front frameless glass curtain walling with 75mm aluminum capping at base, bronze effect aluminum framed double or triple glazed doors to match.
  - F** - Windows / doors: PPC aluminum framed double or triple glazed units (manufacturer to be agreed).
  - G** - Canopies: Pre-formed metal boxed canopy in bronze metallic finish with hidden structure and integral lighting.
  - H** - Perforated metal balustrade or privacy screen: perforated metal (bronze metallic finish) supported off PPC coated frame with hidden fixings and minimal joints - allow for non-uniform setting out of perforations - details to be agreed.
  - I** - Metal Railing Balustrade: formed from PPC vertical flats (approx 50 x 12mm).
  - J** - Metal Railing Balustrade: formed from PPC vertical flats (approx 50 x 12mm) extending to balcony soffit with metal plate fascia fixed to balcony edge.
  - K** - Precast concrete or stone coping to parapet wall - allow for reinforcement back to structure.
  - L** - Glass balustrade: frameless glass with no visible fixings.
  - M** - Brick work type 4: Green Glazed brickwork, stack bonded to residential entrances

- N** - Hit and miss brickwork wall to basement cycle store - free area to meet ventilation requirements to basement.
- O** - 1.2 m high Fagus sylvatica (beech) instant hedge planted in a double staggered row.
- P** - Reconstituted Stone on fixing ancon bracket to form architrave detail to concierge/supermarket/retail entrances.
- Q** - Aluminium PPC louvred doors/panels to refuse store/car park ramp/fire exits/substation/vent intake or exhaust locations.
- R** - Brick work type 2: Slightly recessed brick wall with stepped brick coursing.
- S** - Close boarded timber fence to meet Acoustic requirements.
- T** - Brick work type 5: Reduced specification / off-shade brick wall forming retaining structure.

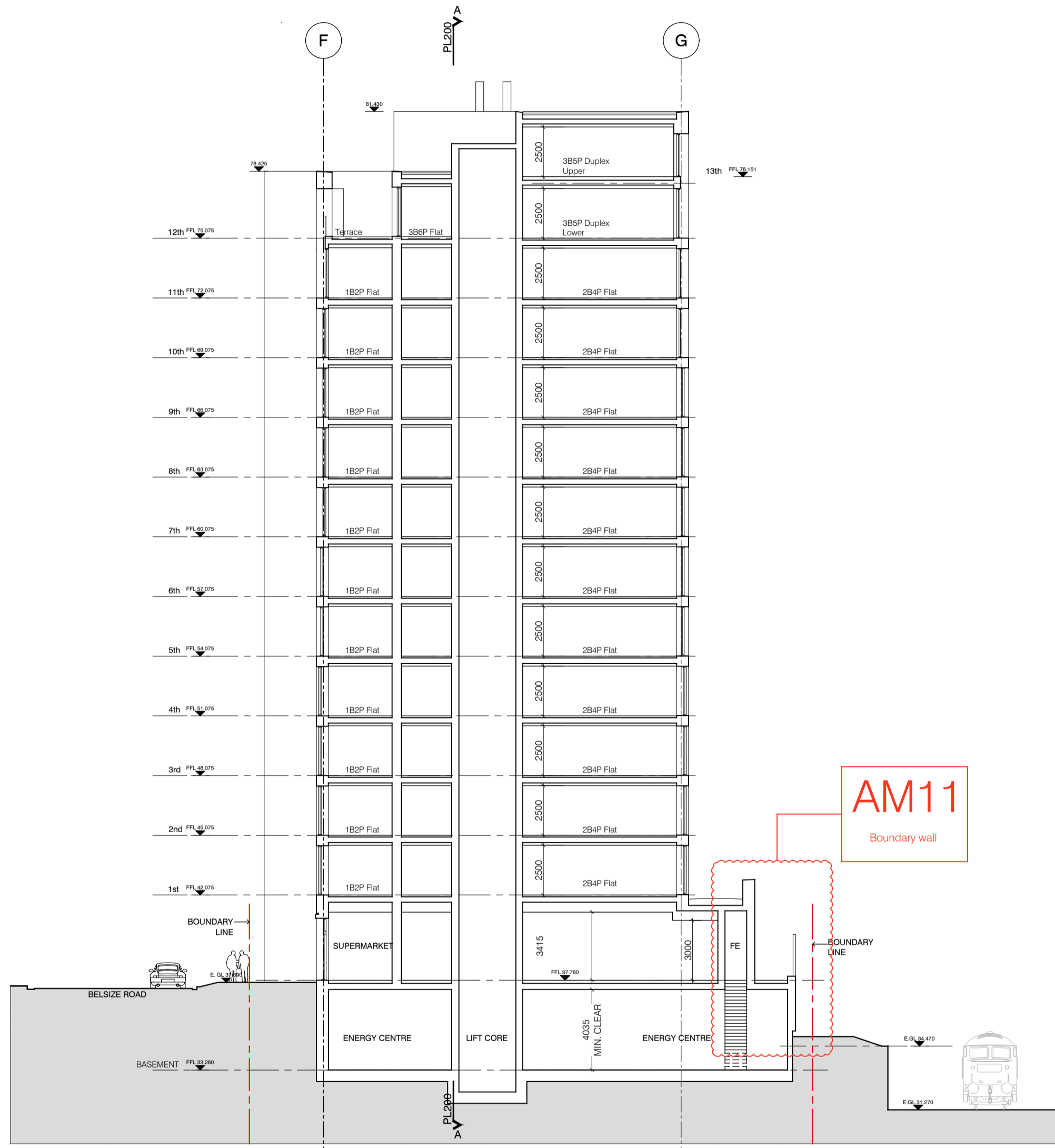


SECTION 73 APPLICATION

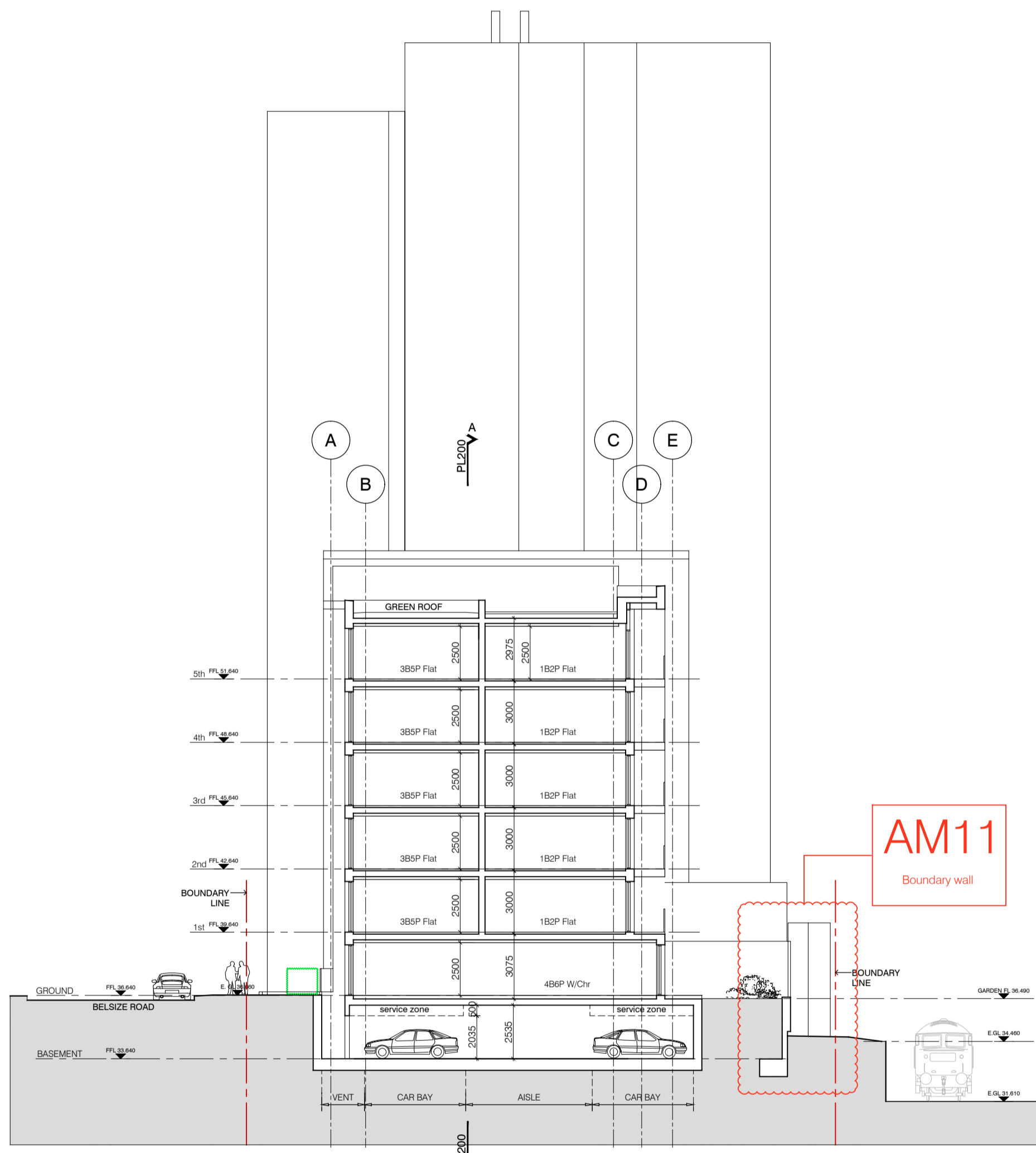
C	21.06.16	Amendment references added. Material Key updated. Issued to planning	EN	DPD
B	15.04.16	Amendment references added. Material Key updated. Issued to CBRE	DPD	DB
A	18.12.15	Amendment references added. Issued to planning	BM	DPD

rev.	date	description	dm	aud
<b>PLANNING</b>				
Diespeker Wharf 38 Graham Street London N1 8JX t: 020 7336 7777 w: www.ptea.co.uk f: 020 7336 0770 e: forename.surname@ptea.co.uk				
<b>PTEa</b> FOLLARD THOMAS EDWARDS architects				
project: ABBEY AREA REGENERATION - PHASE 1 LONDON		job no: 12_510 drawn: PT checked: DPD scale: 1:200 @ A1	date: JUL 13	
drawing title: GENERAL ARRANGEMENT 11th, 12th, 13th FLOOR & ROOF PLANS		fig. no: 510_1_PL_105	rev: C	

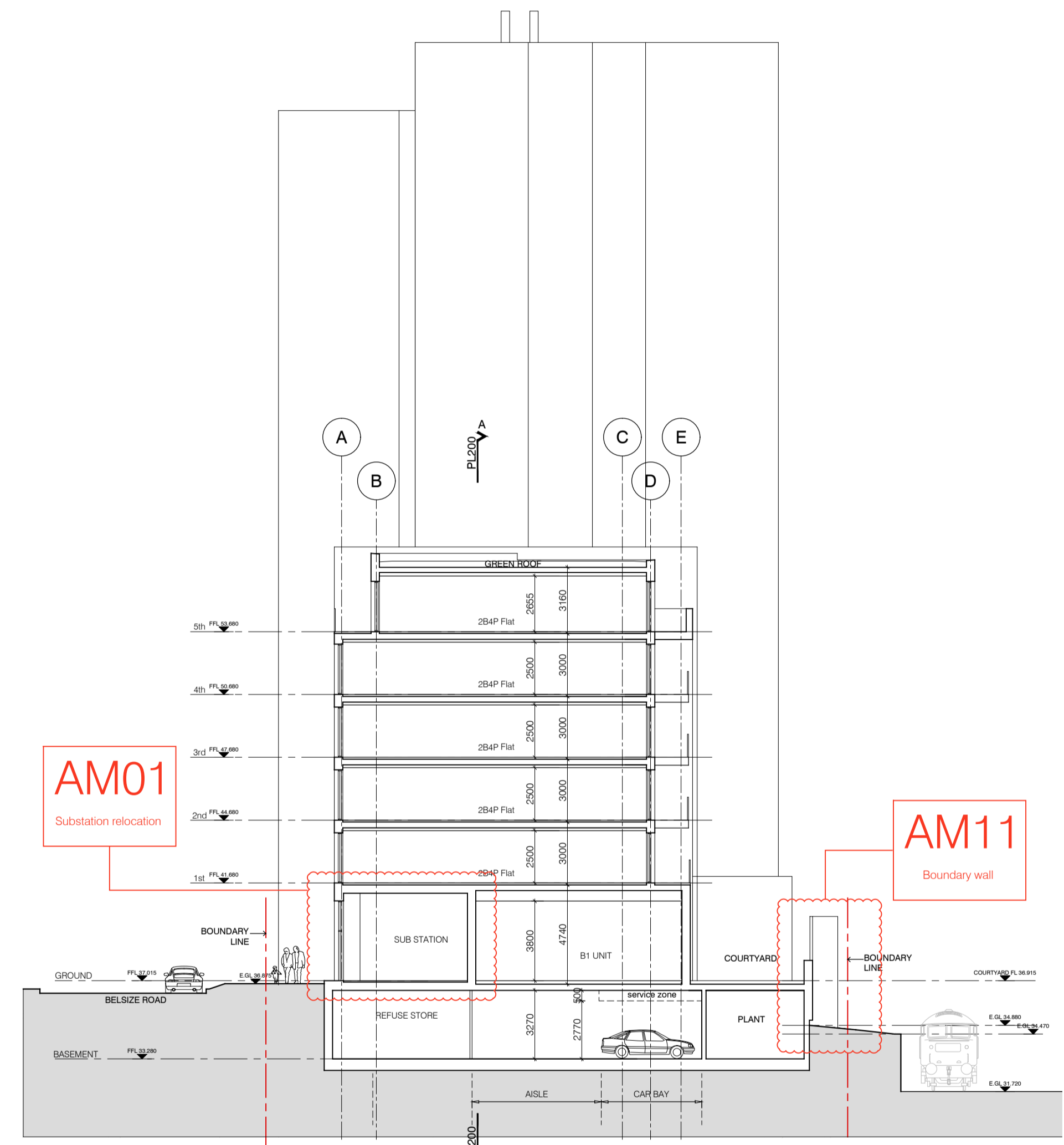




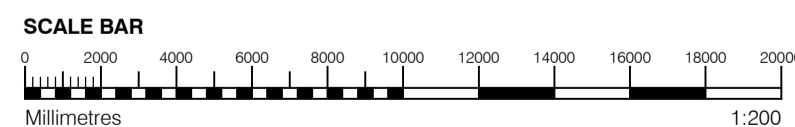
1 SECTION B-B  
Through Block F



2 SECTION C-C  
Through Block C



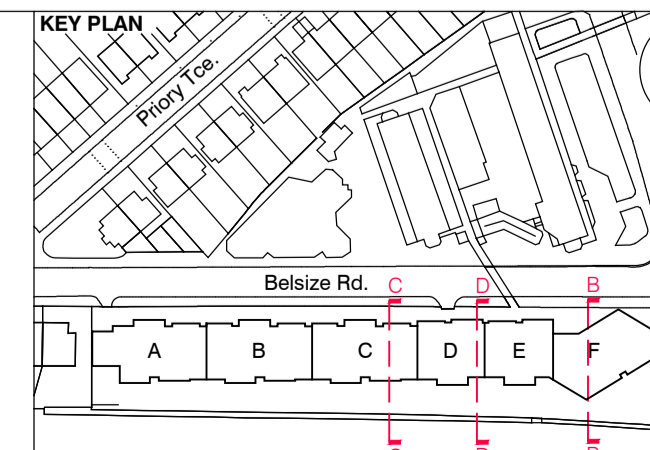
3 SECTION D-D  
Through Block D



- GENERAL NOTES**
- This drawing is copyright of PTE architects
  - Use figured dimensions only. DO NOT SCALE.
  - All dimensions are in millimetres unless noted otherwise
  - All levels are in metres above ordnance datum unless noted otherwise
  - This drawing must be read in conjunction with all other relevant drawings and specifications from the Architect and other consultants
- NOTES**
- All setting out to be confirmed on site prior to construction - any discrepancy must be immediately reported to the Architect.

- MATERIAL KEY**
- A** - Brick work type 1: Red Brick, stretcher bond with light colour mortar. Openings to have a deep brick reveal (approx. 190mm unless stated otherwise).
  - B** - Brick work type 2: Reflective blue/purple Brick, stretcher bond with dark gray mortar. Openings to have a deep brick reveal (approx. 190mm unless stated otherwise).
  - C** - Brick work type 3: White glazed brick, stack bonded with white colour mortar, to Block F recessed balconies.
  - D** - Metal panel: bronze effect panels with hidden fixings and minimal joints.

- E** - Shop front frameless glass curtain walling with 75mm aluminum capping at base, bronze effect aluminum framed double or triple glazed doors to match.
- F** - Windows / doors: PPC aluminum framed double or triple glazed units (manufacturer to be agreed).
- G** - Canopies: Pre-formed metal boxed canopy in bronze metallic finish with hidden structure and integral lighting.
- H** - Perforated metal balustrade or privacy screen: perforated metal (bronze metallic finish) supported off PPC coated frame with hidden fixings and minimal joints - allow for non-uniform setting out of perforations - details to be agreed.
- I** - Metal Railing Balustrade: formed from PPC vertical flats (approx 50 x 12mm).
- J** - Metal Railing Balustrade: formed from PPC vertical flats (approx 50 x 12mm) extending to balcony soffit with metal plate fascia fixed to balcony edge.
- K** - Precast concrete or stone coping to parapet wall - allow for reinforcement back to structure.
- L** - Glass balustrade: frameless glass with no visible fixings.
- M** - Brick work type 4: Green Glazed brickwork, stack bonded to residential entrances
- N** - Hit and miss brickwork wall to basement cycle store - free area to meet ventilation requirements to basement.
- O** - 1.2 m high Fagus sylvatica (beech) instant hedge planted in a double staggered row.
- P** - Reconstituted Stone on fixing ancon bracket to form architrave detail to concierge/supermarket/retail entrances.
- Q** - Aluminium PPC louvred doors/panels to refuse store/car park ramp/fire exits/substation/vent intake or exhaust locations.
- R** - Brick work type 2: Slightly recessed brick wall with stepped brick coursing.
- S** - Close boarded timber fence to meet Acoustic requirements.
- T** - Brick work type 5: Reduced specification / off-shade brick wall forming retaining structure.



S73 APPLICATION			
C	21.06.16	Amendment references added. Material Key updated. Issued to planning	EN DPD
B	15.04.16	Amendment references added. Material Key updated. Issued to CBRE	DPD DB
A	18.12.15	Amendment references added. Issued to CBRE	BM DPD

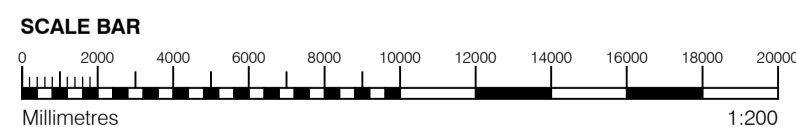
rev.	date	description	dm	aud
PLANNING				
Diespeker Wharf 38 Graham Street London N1 8JX				
t: 020 7336 7777 w: www.ptea.co.uk f: 020 7336 0770 e: forename.surname@ptea.co.uk				
<b>PTEa</b> FOLLARD THOMAS EDWARDS architects				
PROJECT: ABBEY AREA REGENERATION-PHASE 1 LONDON		job no: 12_510	drawn: LG	audited: DPD
drawing title: GENERAL ARRANGEMENT SHORT SECTION B-B, C-C & D-D		scale: 1:200@A1	date: JUL 13	fig. no: 510_1_PL_201
				rev: C



1 NORTH ELEVATION  
1:200

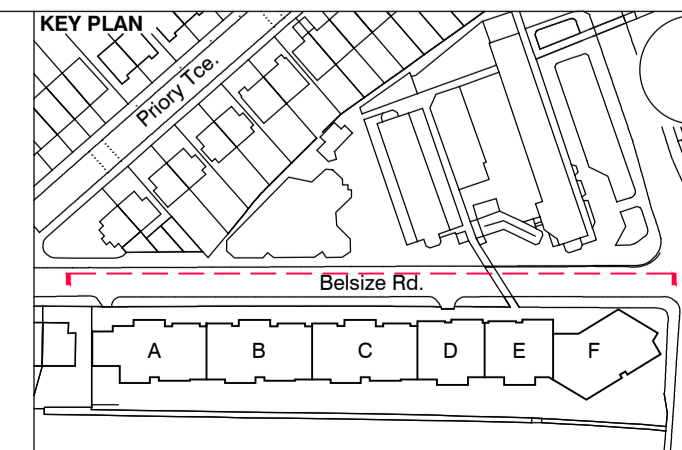


2 NORTH SITE ELEVATION  
1:500

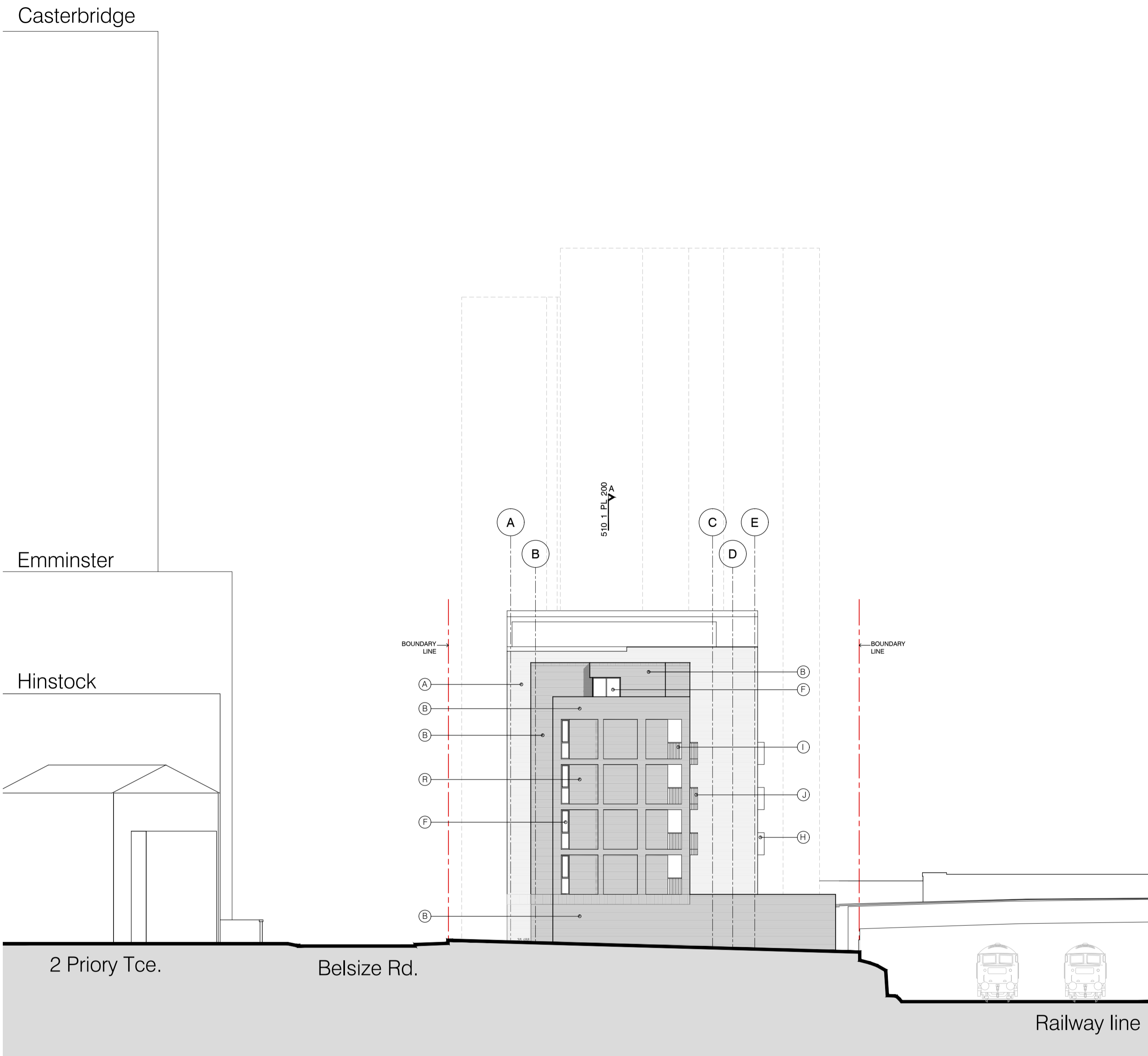


- GENERAL NOTES**
- This drawing is copyright of PTE architects
  - Use figured dimensions only. DO NOT SCALE.
  - All dimensions are in millimetres unless noted otherwise
  - All levels are in metres above Ordnance datum unless noted otherwise
  - This drawing must be read in conjunction with all other relevant drawings and specifications from the Architect and other consultants
- NOTES**
- All setting out to be confirmed on site prior to construction - any discrepancy must be immediately reported to the Architect.

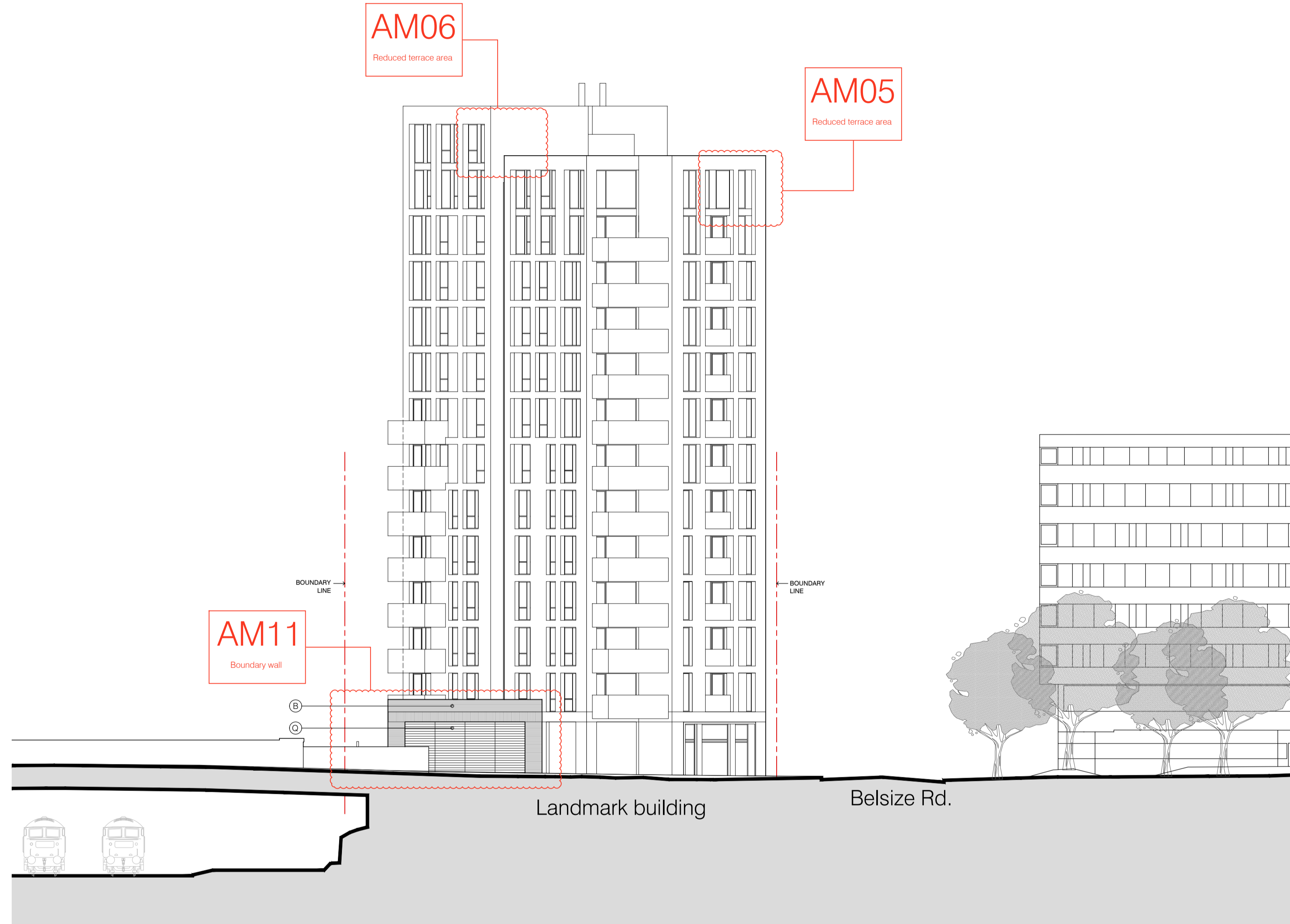
- MATERIAL KEY**
- A** - Brick work type 1: Red Brick, stretcher bond with light colour mortar. Openings to have a deep brick reveal (approx. 190mm unless stated otherwise).
  - B** - Brick work type 2: Reflective blue/purple Brick, stretcher bond with dark grey mortar. Openings to have a deep brick reveal (approx. 190mm unless stated otherwise).
  - C** - Brick work type 3: White glazed brick, stack bonded with white colour mortar, to Block F recessed balconies.
  - D** - Metal panel: bronze effect panels with hidden fixings and minimal joints.
  - E** - Shop front frameless glass curtain walling with 75mm aluminum capping at base, bronze effect aluminum framed double or triple glazed doors to match.
  - F** - Windows / doors: PPC aluminum framed double or triple glazed units (manufacturer to be agreed).
  - G** - Canopies: Pre-formed metal boxed canopy in bronze metallic finish with hidden structure and integral lighting.
  - H** - Perforated metal balustrade or privacy screen: perforated metal (bronze metallic finish) supported off PPC coated frame with hidden fixings and minimal joints - allow for non-uniform setting out of perforations - details to be agreed.
  - I** - Metal Railing Balustrade: formed from PPC vertical flats (approx 50 x 12mm).
  - J** - Metal Railing Balustrade: formed from PPC vertical flats (approx 50 x 12mm) extending to balcony soffit with metal plate fascia fixed to balcony edge.
  - K** - Precast concrete or stone coping to parapet wall - allow for reinforcement back to structure.
  - L** - Glass balustrade: frameless glass with no visible fixings.
  - M** - Brick work type 4: Green Glazed brickwork, stack bonded to residential entrances
  - N** - Hit and miss brickwork wall to basement cycle store - free area to meet ventilation requirements to basement.
  - O** - 1.2 m high Fagus sylvatica (beech) instant hedge planted in a double staggered row.
  - P** - Reconstituted Stone on fixing ancon bracket to form architrave detail to concierge/supermarket/retail entrances.
  - Q** - Aluminium PPC louvred doors/panels to refuse store/car park ramp/fire exits/substation/vent intake or exhaust locations.
  - R** - Brick work type 5: Slightly recessed brick wall with stepped brick coursing.
  - S** - Close boarded timber fence to meet Acoustic requirements.
  - T** - Brick work type 5: Reduced specification / off-shade brick wall forming retaining structure.



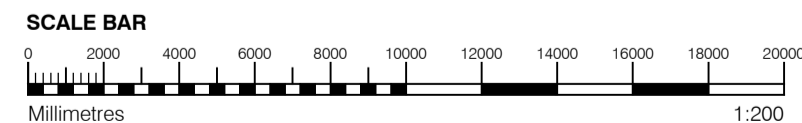
drawing status				PLANNING				
E	21.06.16	Amendment references added. Material Key updated. Issued to planning	EN	DPD				
D	15.04.16	Amendment references added. Material Key updated. Issued to CBRE	DPD	DB				
C	18.12.15	Amendment references added. Issued to CBRE	BM	DPD				
B	04.10.13	5th floor Windows blocks A-E & FE doors in Block F	BM	DPD				
A	02.09.13	Drawing amended and issued to design team for comment.	RL	DPD				
rev	date	description	dm	aud				
Diespeker Wharf 38 Graham Street London N1 8JX t: 020 7336 7777 w: www.ptea.co.uk f: 020 7336 0770 e: forename.surname@ptea.co.uk				<b>PTEa</b> POLLARD THOMAS EDWARDS architects				
project: ABBEY AREA REGENERATION-PHASE 1 LONDON				job no: 12_510	draw: BM	audit: DPD	scale: 1:200@A1	date: JUL 13
drawing title: GENERAL ARRANGEMENT NORTH ELEVATION & NORTH SITE ELEVATION				fig. no.: 510_1_PL_300	rev: E			



1 EAST ELEVATION  
1:200



2 WEST ELEVATION  
1:200



**GENERAL NOTES**

- This drawing is copyright of PTE architects
- Use figured dimensions only. DO NOT SCALE.
- All dimensions are in millimetres unless noted otherwise
- All levels are in metres above ordnance datum unless noted otherwise
- This drawing must be read in conjunction with all other relevant drawings and specifications from the Architect and other consultants

**NOTES**

- All setting out to be confirmed on site prior to construction - any discrepancy must be immediately reported to the Architect.

**MATERIAL KEY**

**A** - Brick work type 1: Red Brick, stretcher bond with light colour mortar. Openings to have a deep brick reveal (approx 190mm unless stated otherwise).

**B** - Brick work type 2: Reflective blue/purple Brick, stretcher bond with dark grey mortar. Openings to have a deep brick reveal (approx 190mm unless stated otherwise).

**C** - Brick work type 3: White glazed brick, stack bonded with white colour mortar, to Block F recessed balconies.

**D** - Metal panel: bronze effect panels with hidden fixings and minimal joints.

**E** - Shop front frameless glass curtain walling with 75mm aluminum capping at base, bronze effect aluminum framed double or triple glazed doors to match.

**F** - Windows / doors: PPC aluminum framed double or triple glazed units (manufacturer to be agreed).

**G** - Canopies: Pre-formed metal boxed canopy in bronze metallic finish with hidden structure and integral lighting.

**H** - Perforated metal balustrade or privacy screen: perforated metal (bronze metallic finish) supported off PPC coated frame with hidden fixings and minimal joints - allow for non-uniform setting out of perforations - details to be agreed.

**I** - Metal Railing Balustrade: formed from PPC vertical flats (approx 50 x 12mm).

**J** - Metal Railing Balustrade: formed from PPC vertical flats (approx 50 x 12mm) extending to balcony soffit with metal plate fascia fixed to balcony edge.

**K** - Precast concrete or stone coping to parapet wall - allow for reinforcement back to structure.

**L** - Glass balustrade: frameless glass with no visible fixings.

**M** - Brick work type 4: Green Glazed brickwork, stack bonded to residential entrances

**N** - Hit and miss brickwork wall to basement cycle store - free area to meet ventilation requirements to basement.

**O** - 1.2 m high Fagus sylvatica (beech) instant hedge planted in a double staggered row.

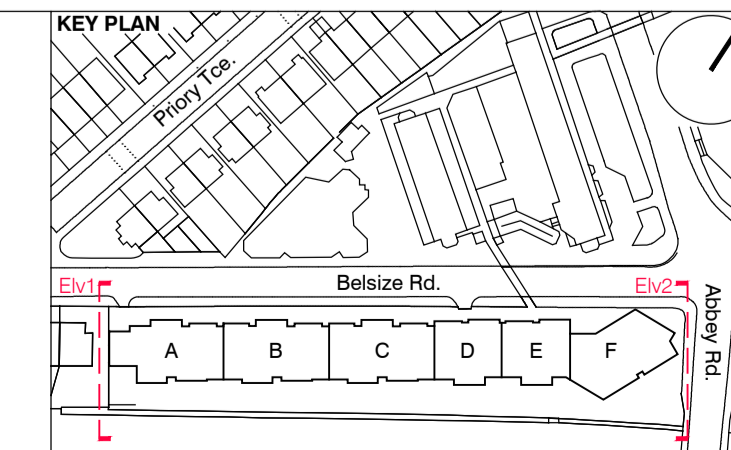
**P** - Reconstituted Stone on fixing ancon bracket to form architrave detail to concierge/supermarket/retail entrances.

**Q** - Aluminium PPC louvred doors/panels to refuse store/car park ramp/fire exits/substation/vent intake or exhaust locations.

**R** - Brick work type 2: Slightly recessed brick wall with stepped brick coursing.

**S** - Close boarded timber fence to meet Acoustic requirements.

**T** - Brick work type 5: Reduced specification / off-shade brick wall forming retaining structure.

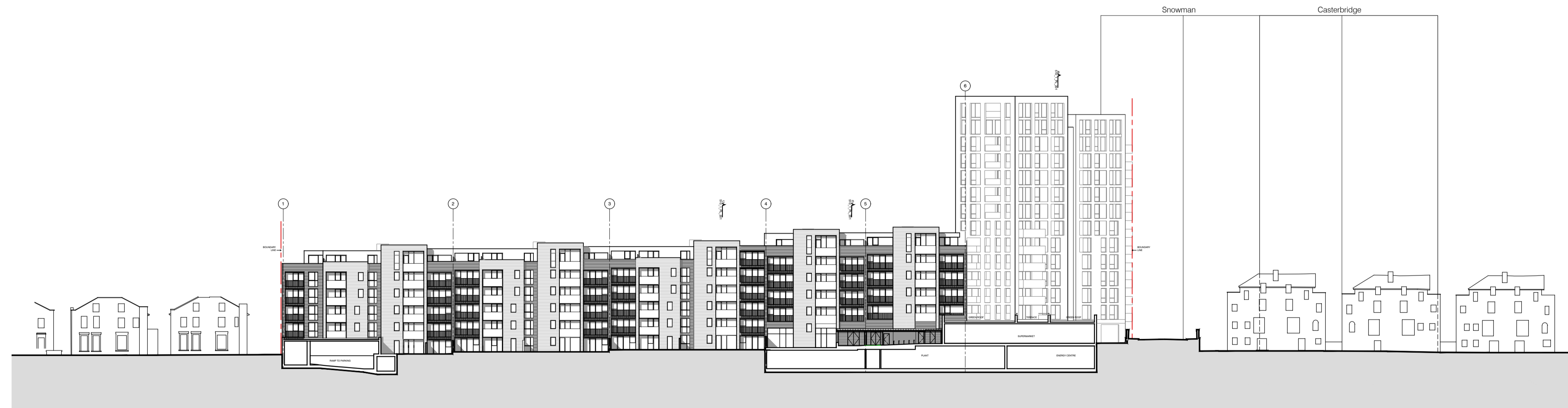


SECTION 73 APPLICATION			
C	21.06.16	Amendment references added. Issued to planning	EN DPD
B	15.04.16	Amendment references added. Issued to CBRE	DPD DB
A	18.12.15	Amendment references added. Issued to CBRE	BM DPD

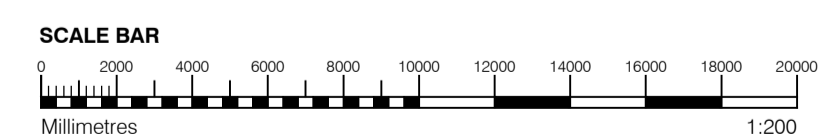
PLANNING			
Diespeker Wharf 38 Graham Street London N1 8JX			
t: 020 7336 7777	w: www.ptea.co.uk		
f: 020 7336 0770	e: forename.surname@ptea.co.uk		
project: ABBEY AREA REGENERATION-PHASE 1	job no: 12_510	drawn: LG	audited: DPD
scale: 1:200@A1	date: JUL 13		
design title: GENERAL ARRANGEMENT EAST ELEVATION, WEST ELEVATION	fig. no: 510_1_PL_301	rev: C	



1 SOUTH ELEVATION  
1:200



2 SOUTH SITE ELEVATION  
1:500



**GENERAL NOTES**

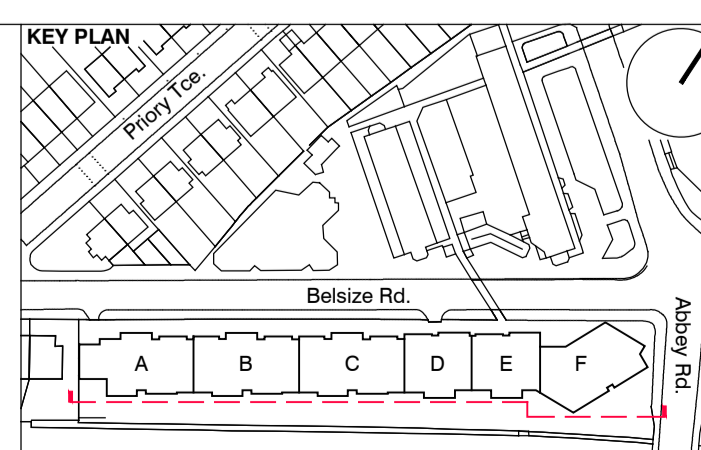
- This drawing is copyright of PTE architects
- Use figured dimensions only. DO NOT SCALE.
- All dimensions are in millimetres unless noted otherwise
- All levels are in metres above ordnance datum unless noted otherwise
- This drawing must be read in conjunction with all other relevant drawings and specifications from the Architect and other consultants

**NOTES**

- All setting out to be confirmed on site prior to construction - any discrepancy must be immediately reported to the Architect.

**MATERIAL KEY**

- A** - Brick work type 1: Red Brick, stretcher bond with light colour mortar. Openings to have a deep brick reveal (approx 190mm unless stated otherwise).
- B** - Brick work type 2: Reflective blue/purple Brick, stretcher bond with dark grey mortar. Openings to have a deep brick reveal (approx 190mm unless stated otherwise).
- C** - Brick work type 3: White glazed brick, stack bonded with white colour mortar, to Block F recessed balconies.
- D** - Metal panel: bronze effect panels with hidden fixings and minimal joints.
- E** - Shop front frameless glass curtain walling with 75mm aluminum capping at base, bronze effect aluminum framed double or triple glazed doors to match.
- F** - Windows / doors: PPC aluminum framed double or triple glazed units (manufacturer to be agreed).
- G** - Canopies: Pre-formed metal boxed canopy in bronze metallic finish with hidden structure and integral lighting.
- H** - Perforated metal balustrade or privacy screen: perforated metal (bronze metallic finish) supported off PPC coated frame with hidden fixings and minimal joints - allow for non-uniform setting out of perforations - details to be agreed.
- I** - Metal Railing Balustrade: formed from PPC vertical flats (approx 50 x 12mm).
- J** - Metal Railing Balustrade: formed from PPC vertical flats (approx 50 x 12mm) extending to balcony soffit with metal plate fascia fixed to balcony edge.
- K** - Precast concrete or stone coping to parapet wall - allow for reinforcement back to structure.
- L** - Glass balustrade: frameless glass with no visible fixings.
- M** - Brick work type 4: Green Glazed brickwork, stack bonded to residential entrances
- N** - Hit and miss brickwork wall to basement cycle store - free area to meet ventilation requirements to basement.
- O** - 1.2 m high Fagus sylvatica (beech) instant hedge planted in a double staggered row.
- P** - Reconstituted Stone on fixing ancon bracket to form architrave detail to concierge/supermarket/retail entrances.
- Q** - Aluminium PPC louvered doors/panels to refuse store/car park ramp/fire exits/substation/vent intake or exhaust locations.
- R** - Brick work type 2: Slightly recessed brick wall with stepped brick coursing.
- S** - Close boarded timber fence to meet Acoustic requirements.
- T** - Brick work type 5: Reduced specification / off-shade brick wall forming retaining structure.



SECTION 73 APPLICATION

rev.	date	description	dm	aud
E	21.06.16	Amendment references added. Material Key updated. Issued to planning	EN	DPD
D	15.04.16	Amendment references added. Material Key updated. Issued to CBRE	DPD	DB
C	18.12.15	Amendment references added. Material Key updated. Issued to CBRE	PJ	DPD
B	04.10.13	Issue for information	BM	DPD
A	02.09.13	Drawing amended and issued to design team for comment.	RL	DPD

**PLANNING**

Diesspeker Wharf  
38 Graham Street  
London N1 8JX

t: 020 7336 7777 w: www.ptea.co.uk  
f: 020 7336 0770 e: forename.surname@ptea.co.uk

project: ABBEY AREA REGENERATION-PHASE 1 job no: 12\_510  
drawn: LG audited: DPD scale: 1:200@A1 date: JUL 13  
desig title: GENERAL ARRANGEMENT SOUTH ELEVATION & SOUTH SITE ELEVATIONS fig. no: 510\_1\_PL\_302 rev: E

