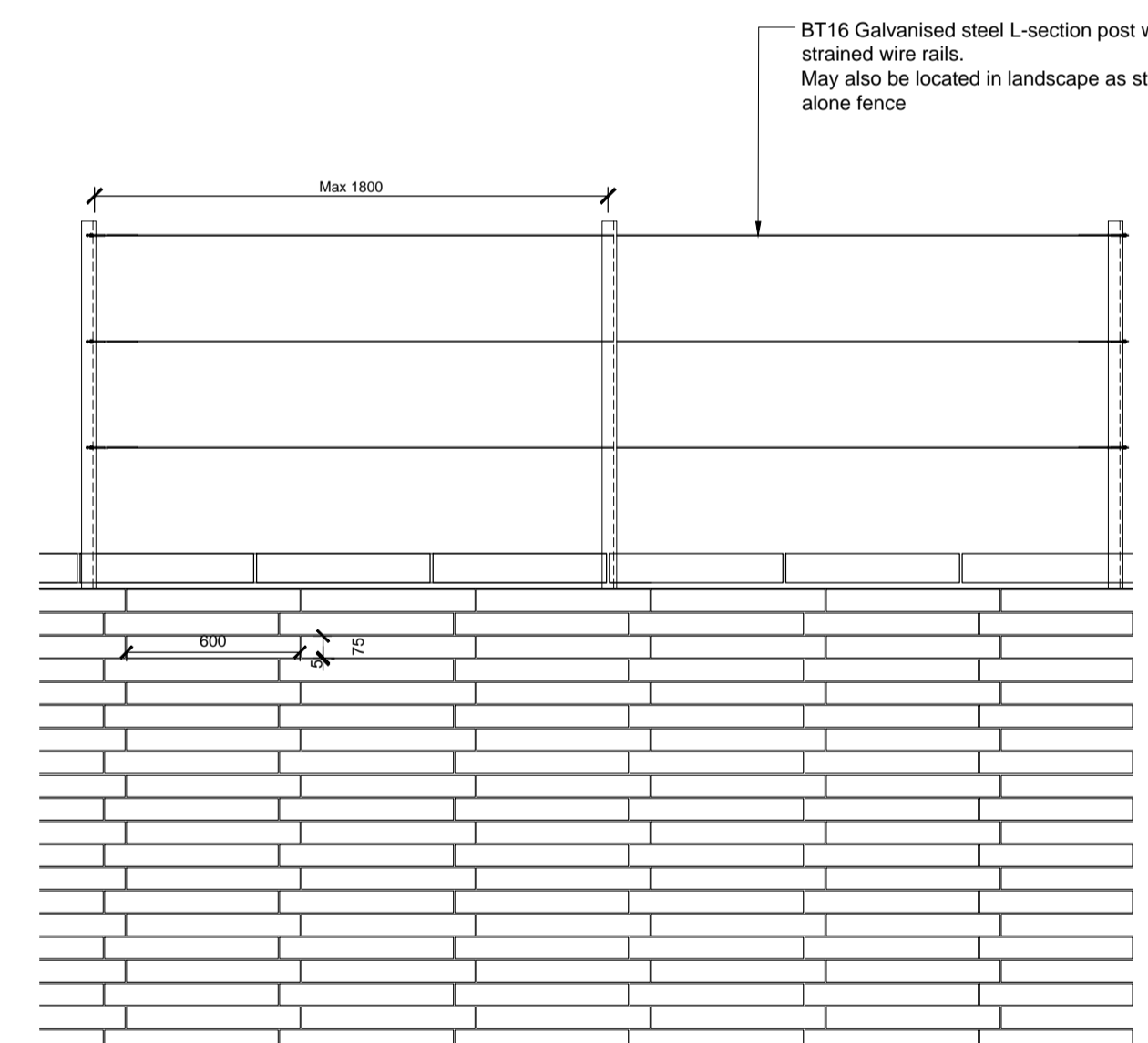
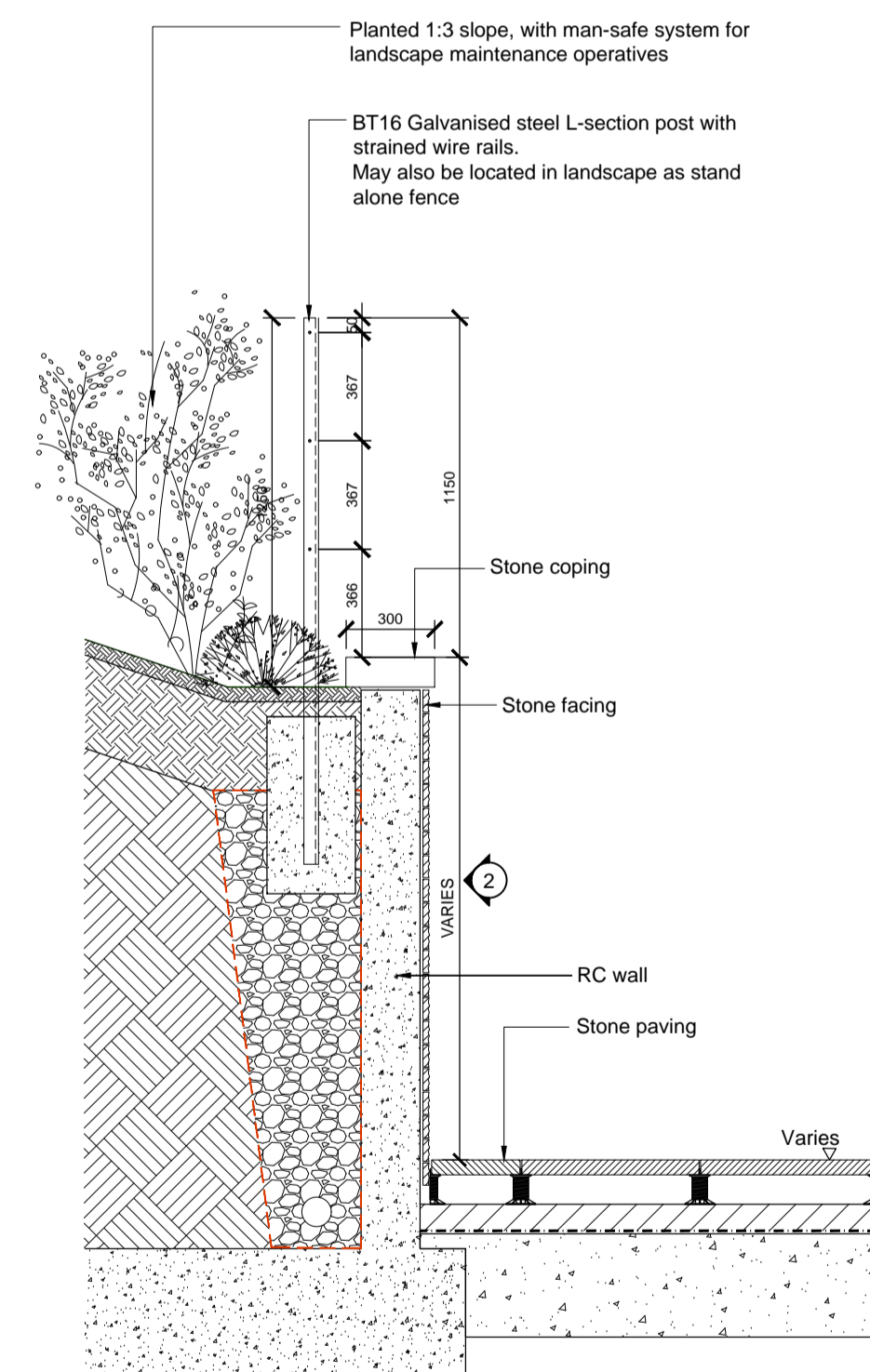
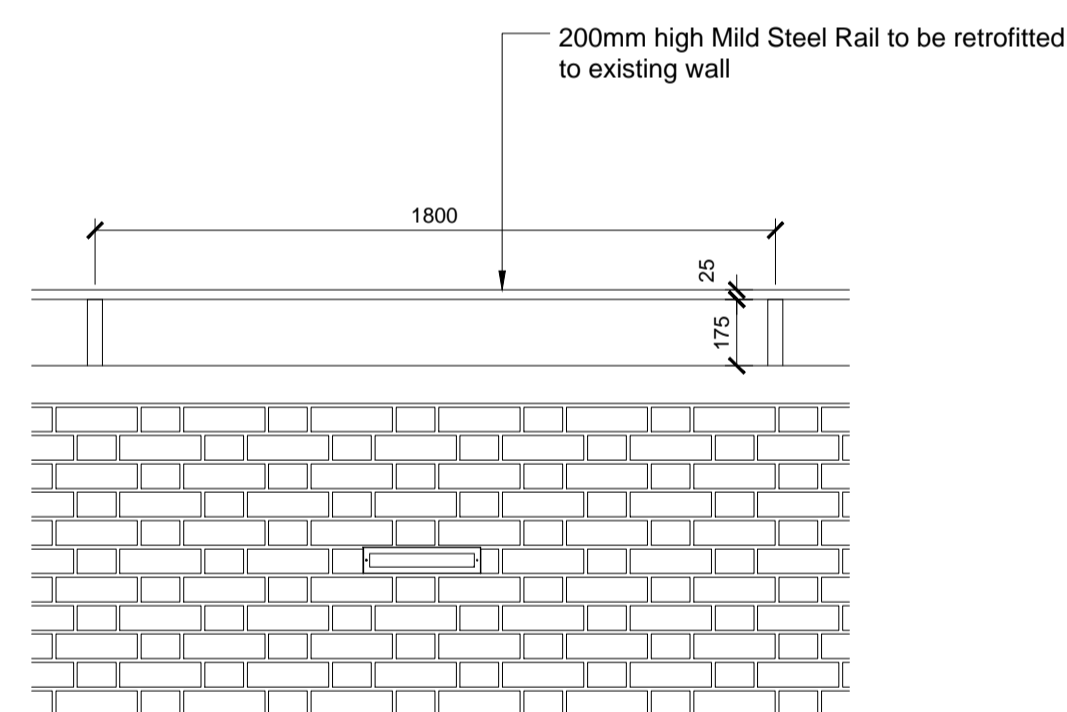
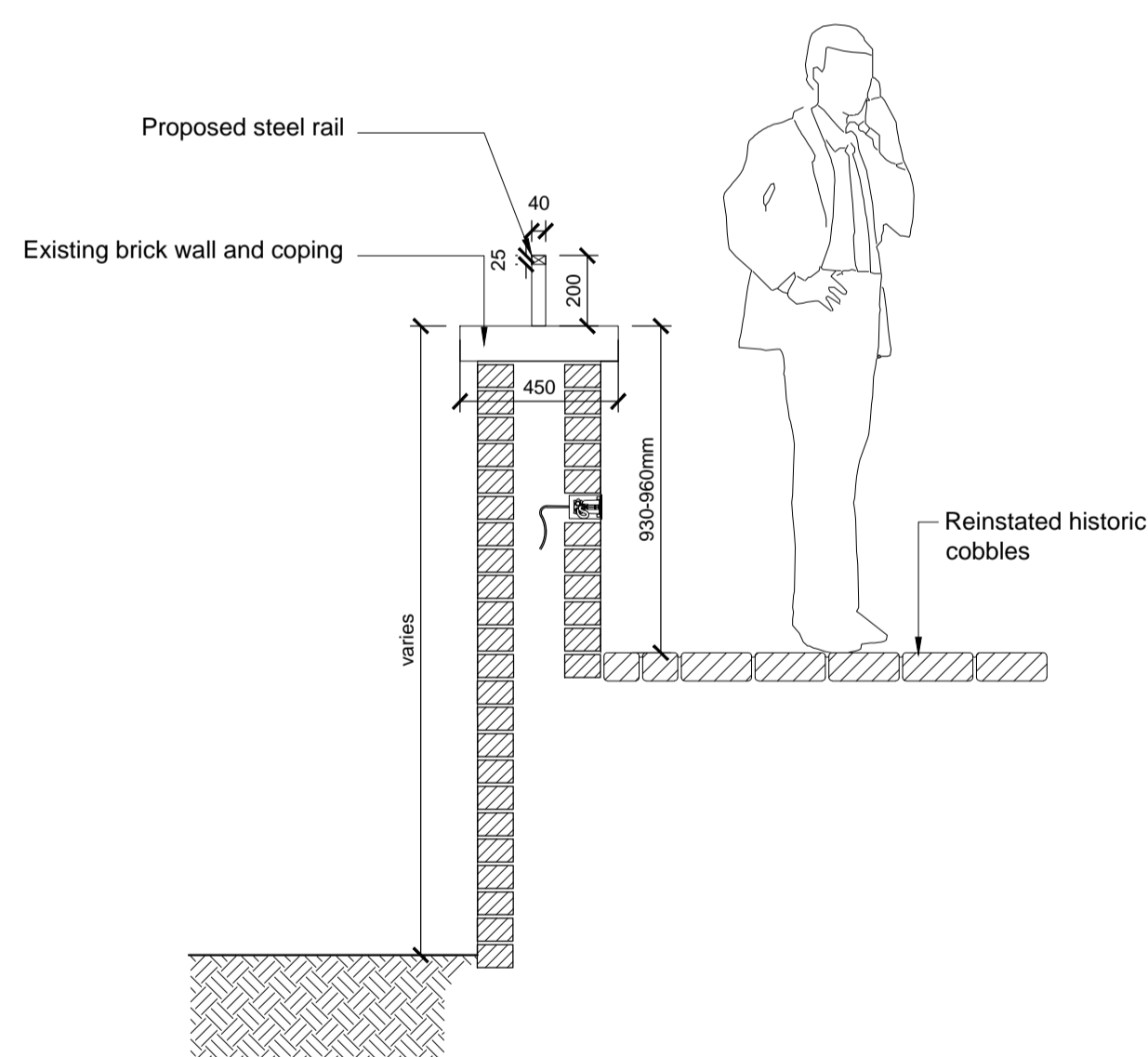


Notes

1. This drawing is the property of fabrik ltd. It must not be copied or reproduced without written consent.
2. Only figured dimensions are to be taken from this drawing. All contractors must visit site and be responsible for taking and checking all dimensions related to the works shown on the drawing.
3. To be read in conjunction with dwg 9300-DRG-PE003 Boundaries and Enclosures Plan

1 Typical Detail - Bt10 1.1m Heritage Style Guard Rail 1
Scale 1:20

2 Typical Detail - BT2a/BT11a 1.1m Heritage Style Guard Rail 2
Scale 1:20



3 Typical Detail - BT8 Existing Brick Retaining Wall with Additional Rail
Scale 1:20

5 Typical Detail - BT7/BT16 Typical Post and Wire Fence Detail
Scale 1:20

fabrik

Lenten House
16 Lenten Street
Alton
Hampshire
GU34 1HG
T: 01420 593250
E: alton@fabrikuk.com
W: www.fabrikuk.com

MOUNT ANVIL	
NO COMMENT	A STATUS A
MINOR COMMENTS	B STATUS B
REVISED DRAWING TO FOLLOW	C STATUS C-REJECTED
DATE:	
REVIEWED BY:	

P00 17.03.2017 For planning.
No. Date Reason
Revisions

External References:

NB JR
Drawn Checked

Project
Kidderpore Avenue, Hampstead
for Mount Anvil

Drawing
Landscape Boundary and Enclosure Types 2

Scale As Shown @ A1 Date Mar '17 Checked JR Drawn NB

Drawing No. 9300-DRG-DE103 Revision P00

<input type="checkbox"/> Preliminary	<input type="checkbox"/> Issued for Design/Information
<input type="checkbox"/> Issued for Planning Approval	<input type="checkbox"/> Issued for Tender
<input checked="" type="checkbox"/> Issued for Construction	<input type="checkbox"/> As Built

Drawing sheet size - A1

Copyright Reserved ©