



VIVI AT CENTRE POINT

Technical Report - Rev 02

20th April 2017

0535.DDR.01 REV -02

ENTRANCE/ RECEPTION

There are several lighting layers within the reception but it can be split into decorative and architectural lighting.

The space is triple height and access to the ceiling is very challenging. Therefore architectural lighting, where possible, has been kept at single height level. This largely consists of downlights recessed to the underside of the stair half landing, and a cantilevered linear light source mounted along the joinery to the rear wall of the reception to illuminate the walkway. Task lighting is build into the reception desks to supplement the ambient levels for receptionist at night.

Other decorative lighting consists of two free standing large format metal signage letters in the style of the original ‘Centrepont’ roof signage with integral lighting as well as cold cathode/ neon lighting to be mounted on the wall elevations facing the entrance (to be visible from the plaza) and integrated joinery lighting within VM display cabinets.

The left hand side elevation in the reception will house an arrangement of vintage glass and metal wall lights ‘climbing’ up the wall. Whilst an effort has been made to minimize access at high level, these will require access for maintenance via a MEWP or tower.

The main lighting feature or ‘aroma’ is illuminated from a combination of track mounted spotlights (the track is to be recessed in the stair stringer overlooåking the bridge) and via spot lights mounted above the coat rack/ storage joinery at the rear of the reception which will illuminate the sculpture from below. These are adjustable light sources. The beam angles and quantities of spotlights and their exact aiming positions will need to be finalized during the commissioning process.

CIRCULATION

Circulation lighting largely consists of downlights. These will be dimmable to fit scenes/moods throughout the day.

BAR

The bar has several layers of lighting. The back bar wall uses a light box detail lit from a linear LED profile to provide a glow through the coloured glass/Perspex wall. Recessed downlights above the bar will reflect

through the high level glass storage and two runs of flexible linear LED lighting around the bar will be mounted in a concealed detail to provide a wash of light to the front of the bar itself and to provide task lighting for the bar staff.

MAIN RESTAURANT

The main restaurant is lit largely from a mixture of spot and medium beam recessed adjustable downlights with ambient lighting being provided by battery powered table lights (on the larger round tables), surface mounted lights to the banquette seating and a continuous concealed coffer lighting detail either side of the down stand beams which run along the length of the space.

Decorative elements include the integrated lighting within the waiter stations and the ‘aroma’ which is illuminated by recessed adjustable spotlights that work as a separate lighting layer to the more functional spotlights. As with the entrance lobby the final design of the aroma is still pending and the positioning and quantities of the lighting specified for this item is TBC pending the final design of this element.

The private dining area is afforded some privacy via a curtain detail, which is to be illuminated from the rail using a flexible LED tape. A hanging pendant provides the main source of light to the VIP dining and lighting control to these areas can be adjusted independently to the rest of the restaurant by a controller located at the adjacent waiter station. A graze of light has been provided to the back wall to highlight the finish of the wall.

LIQUID LOUNGE & PLAY ZONE

Both of these areas are illuminated using a slightly different combination of luminaires housed within a suspended H-section metal profile. The profile enables adjustable spotlights (to be focussed onto tables) and fixed downlights to provide lighting to the tables, bar and dispense areas either end of the building.

The H-section also supports large format custom lettering which face out towards the plaza and Tottenham Court road. These will be internally illuminated.

At low level there is lighting within the shelving details of the dispense

bars and a continuous concealed linear LED strip beneath the mezzanine floor which brings attention to the original/listed mirror wall.

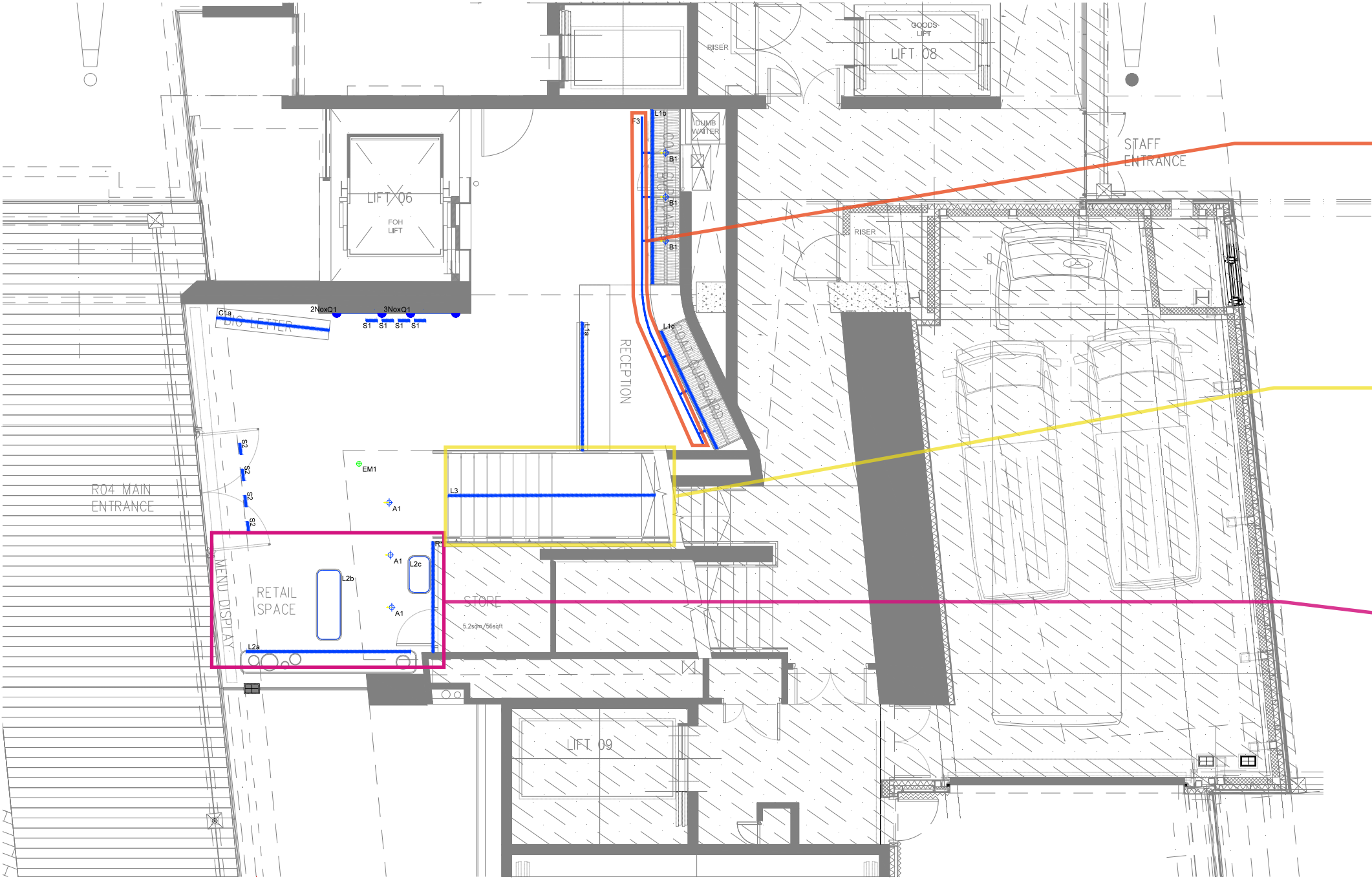
WC

Lighting within the WC’ will consist of general down lighting. The wash basins will use an indirect lighting detail around the mirror and integrated wall lights to provide good illuminance to the vertical surface for vanity lighting. Toilet cubicles will have an indirect cove detail and downlight.

LIGHTING CONTROLS

A lighting control system will be provided to enable the illumination levels to be controlled to meet the needs of the occupants and functions of each space and to minimise energy consumption.

An addressable DALI lighting system, shall be employed to allow for future flexibility, floor plate management and as a mechanism of achieving the scene control requirements DMX and phase dimming protocols will also be used and some luminaires will require DALI inline convertors.



FITTING TYPES



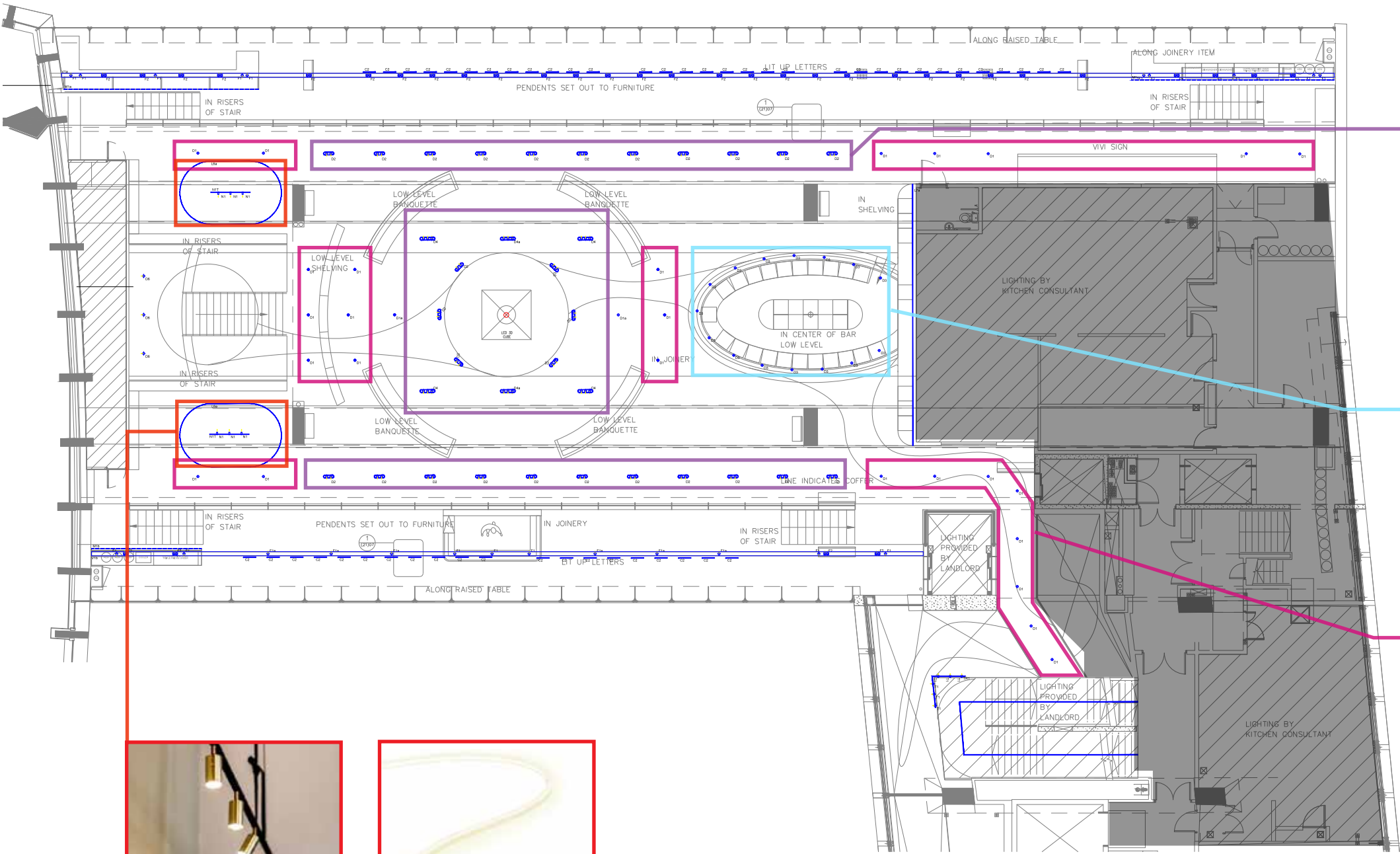
Picture light in Coat Area



Staircase; Homogenous Line of Light



Joinery Lighting



FITTING TYPES



Main Space; Double Gimbals



Bar Accent; Miniature Dowlight



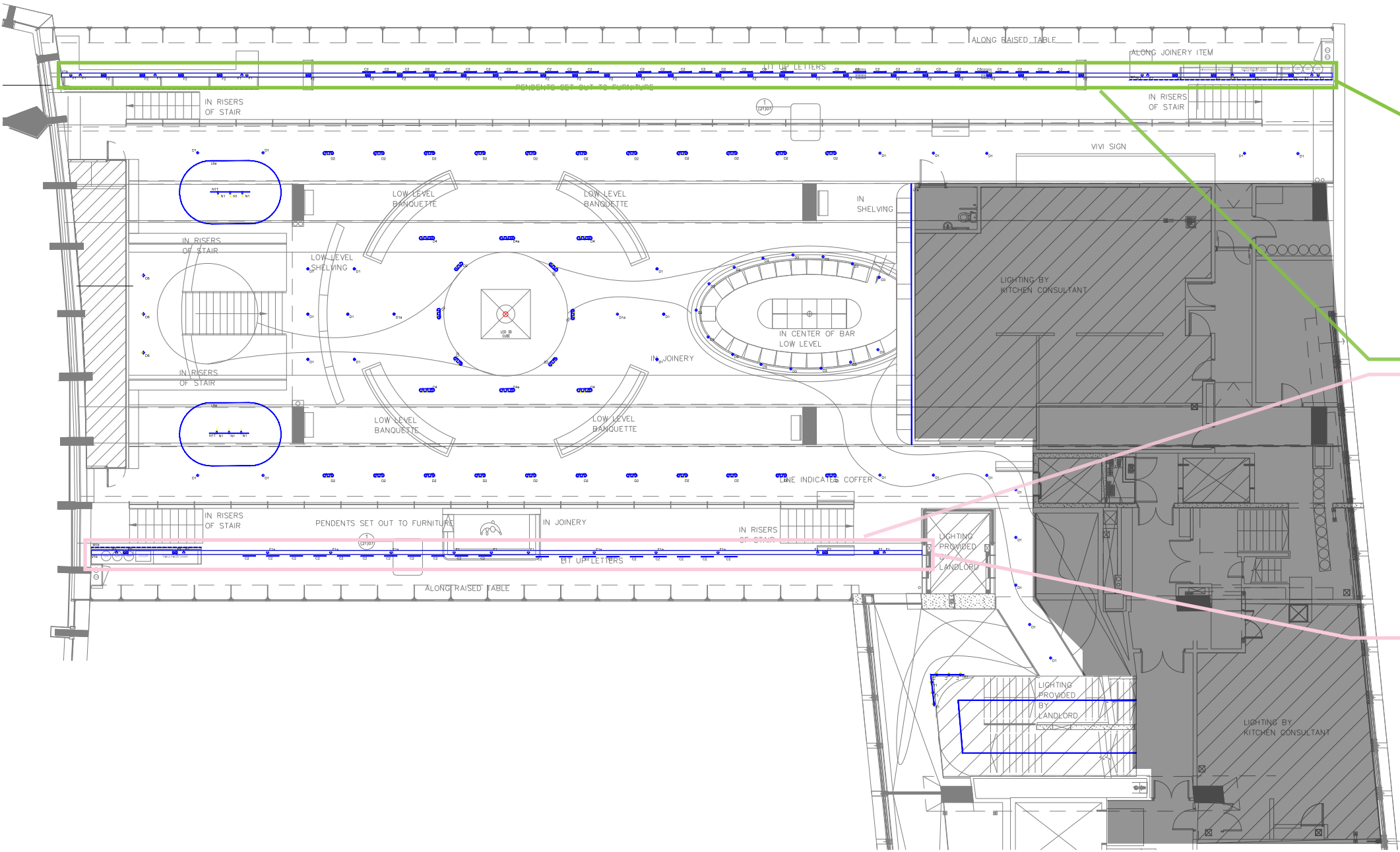
Circulation; Single Dowlight



Private Dining; Pendant



Private Dining; Curtain Detail



FITTING TYPES



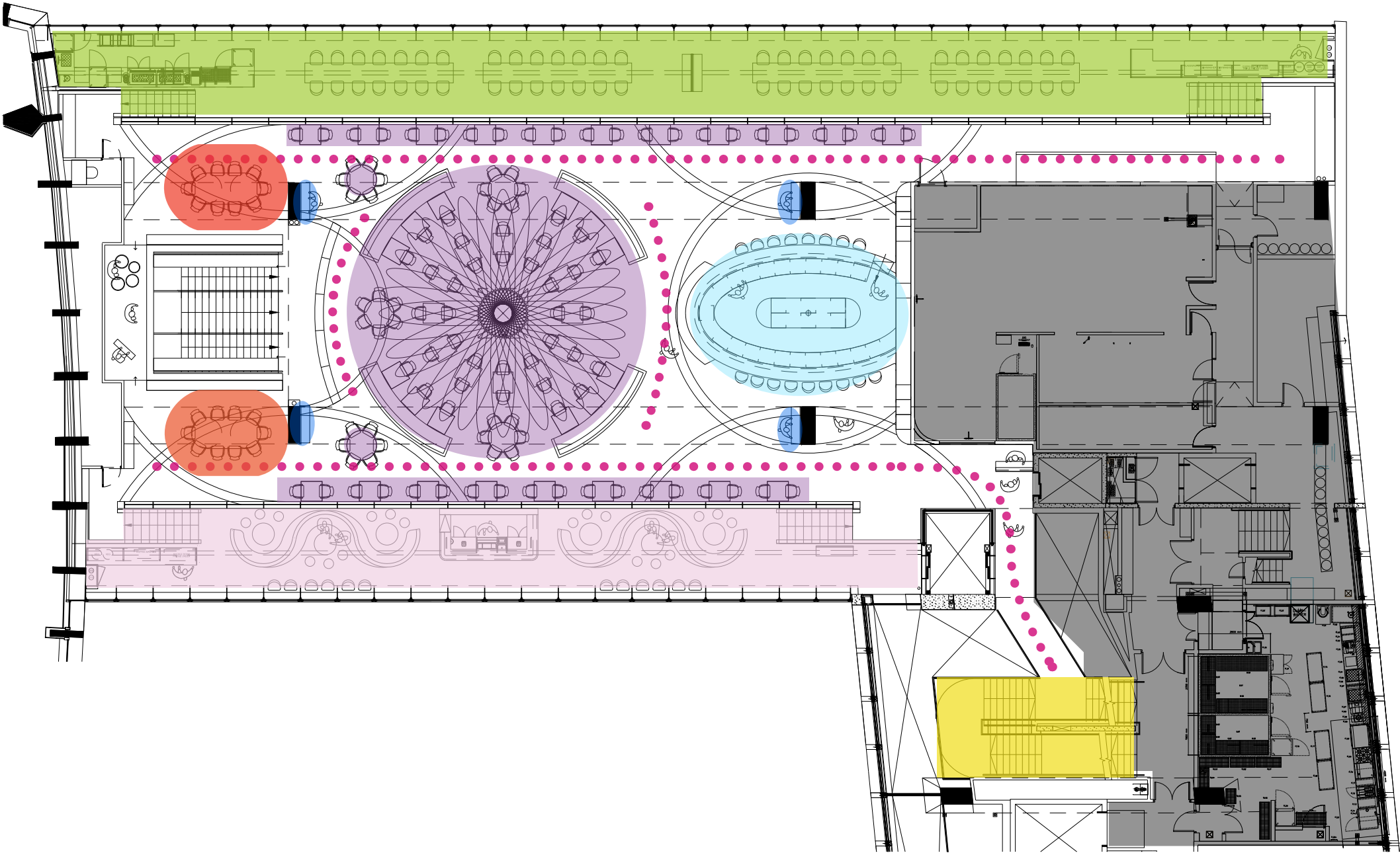
Play Zone; Focused lighting above tables



Downlights for general illumination

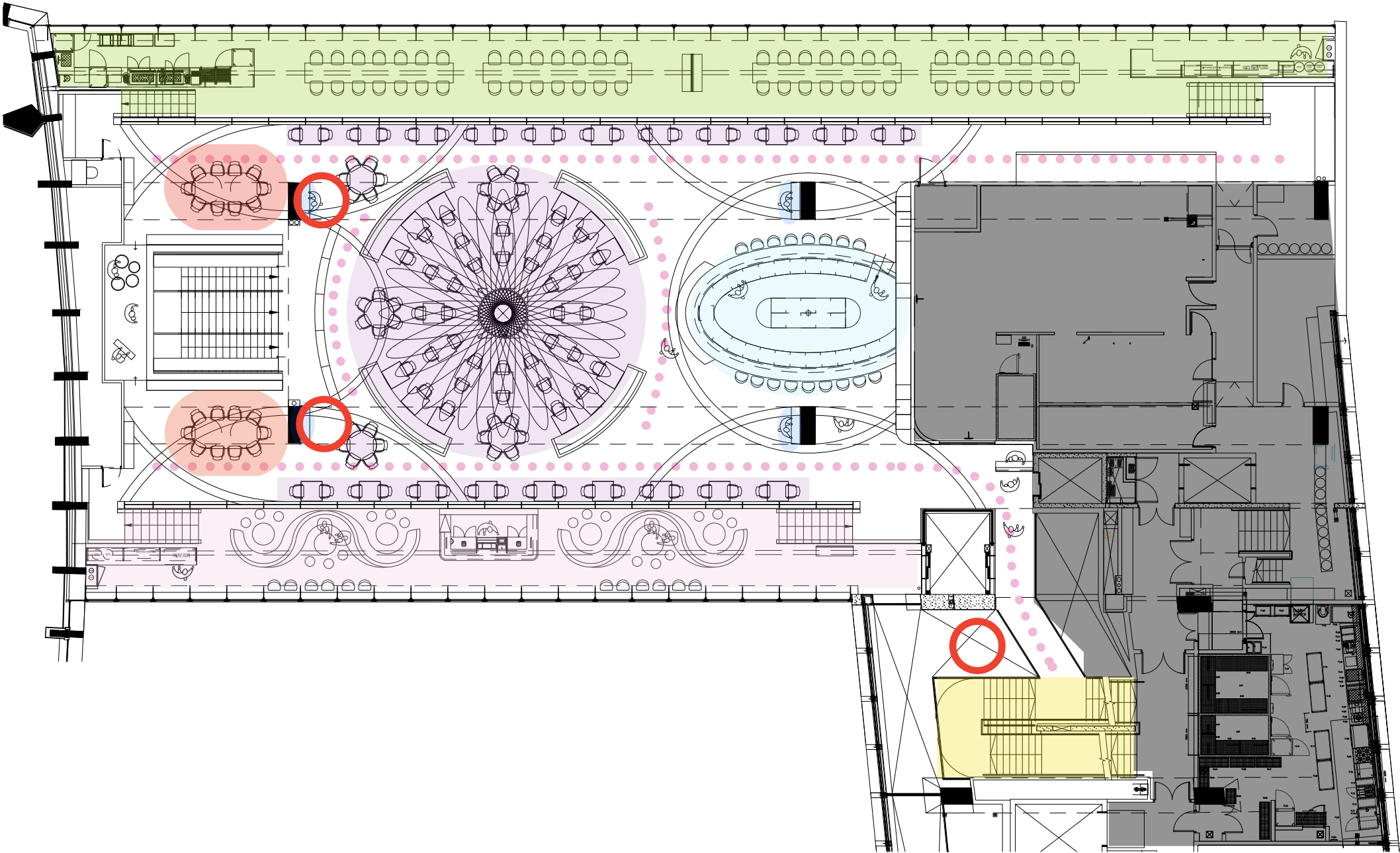


Liquid Lounge; Focused lighting above tables





CONTROL ZONES

- Main Staircase
- Circulation
- Main Restaurant
- Bar Area
- Liquid Lounge
- Play Zone
- Private Dining A
- Private Dining B
- Waiter Stations

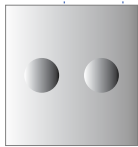


CONTROL POINTS

-  Two Button Control Point
-  Four Button Control Point

GROUND FLOOR - ENTRANCE

1no. 2 BUTTON SWITCH
PLATE WITH ROTARY NOBS



HEAD END
PROCESSOR

240V MAINS

DIMMER RACK 1.

DALI Dim

Mains Dim

5 Amp

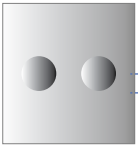
Downlights & Linear

Decorative Lighting

Display Cases

FIRST FLOOR - PRIVATE DINING

2no. 2 BUTTON SWITCH
PLATE WITH ROTARY NOBS



FIRST FLOOR - OFFICE

2no. 4 BUTTON SWITCH
PLATE WITH ROTARY NOBS



DIMMER RACK 2.

DALI Dim

DALI/DMX

5 Amp

Downlights

Feature Pendant

Wall/ Table Lamps

Perimeter Coves

SECOND FLOOR - PUBLIC AREAS

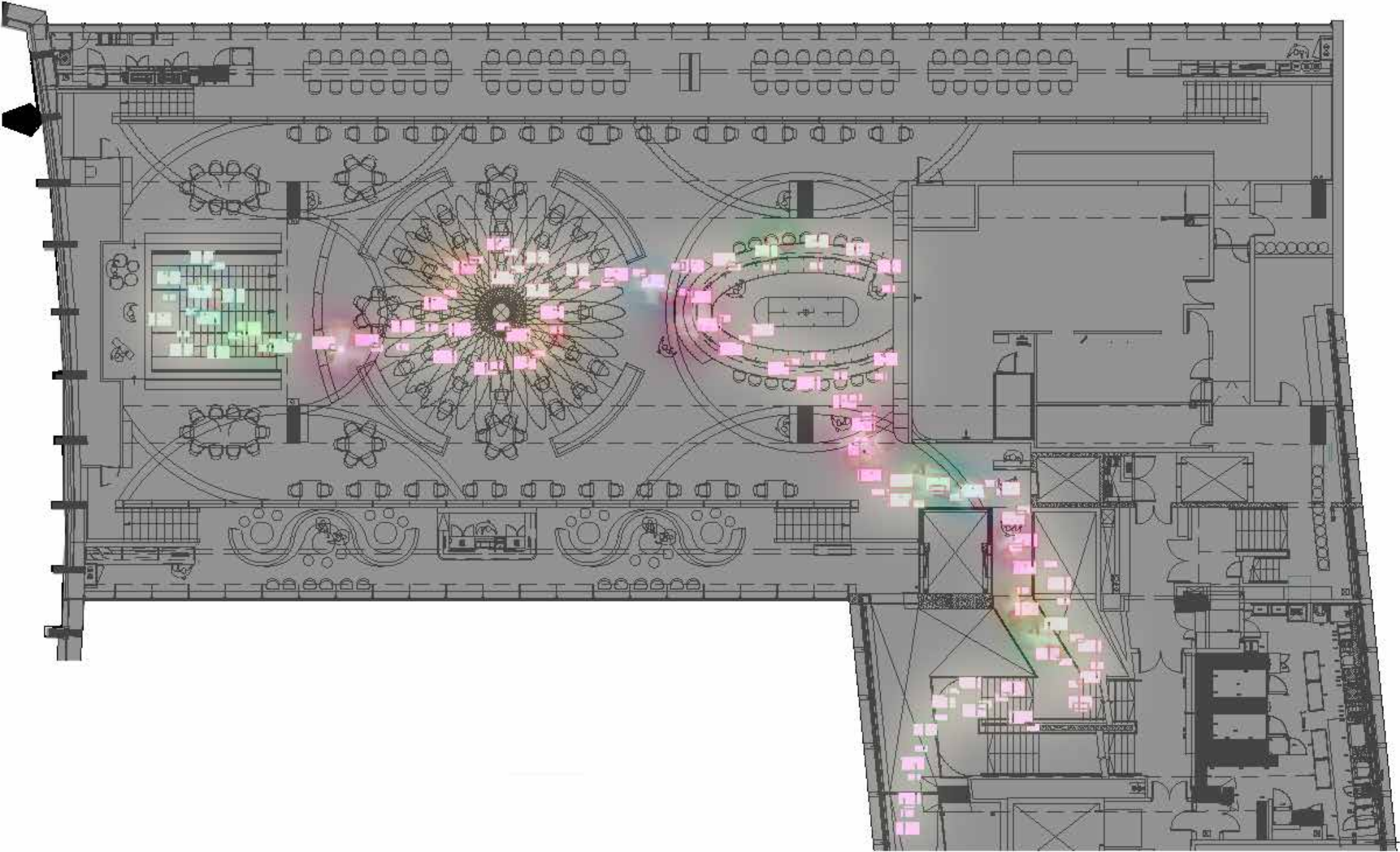
PIR IN TOILETS



DIMMER RACK 3

DALI Dim

Downlights & Coves



MAIN FEATURE PALETTE

- Baby Pink
- Clear
- Grey
- Dichroic

THANK YOU



MORE THAN MEETS THE EYE