

- REV**
- GUNITE STRIP ON CONCRETE TO WALLS W/OUT AND BARRIES ON IT
 - CHEMICAL DIL INJECTION
 - * VERTICAL ZONES
 - SPECIALIST 2 COAT RENDER TO 1.2M HIGH
 - DELTA MASSCO CAVITY MEMBRANE TO WALLS FULL HEIGHT
 - X DELTA MASSCO CAVITY MEMBRANE TO BULKHEAD SLOTTES
 - + DELTA PLUS 20 CASO TO FLOORS WITH INTERLOCKED PERIMETER CHANNEL
 - WATERPROOF TANKING INCLUDING SIKKA 1 TO WALL - FULL HEIGHT
 - X WATER FLOW TANKING SIKKA 1 TO SLOTTES
 - * WATERPROOF TANKING SLOTTES

LOBBY B

SEE SOFFIT DETAIL 03 AND 04

LOBBY A

SEE SOFFIT DETAIL 01 (INSUL COMBI-FLEX AT SOFFIT/STEP DOWNINGS)

SEE JAMB DETAIL 02

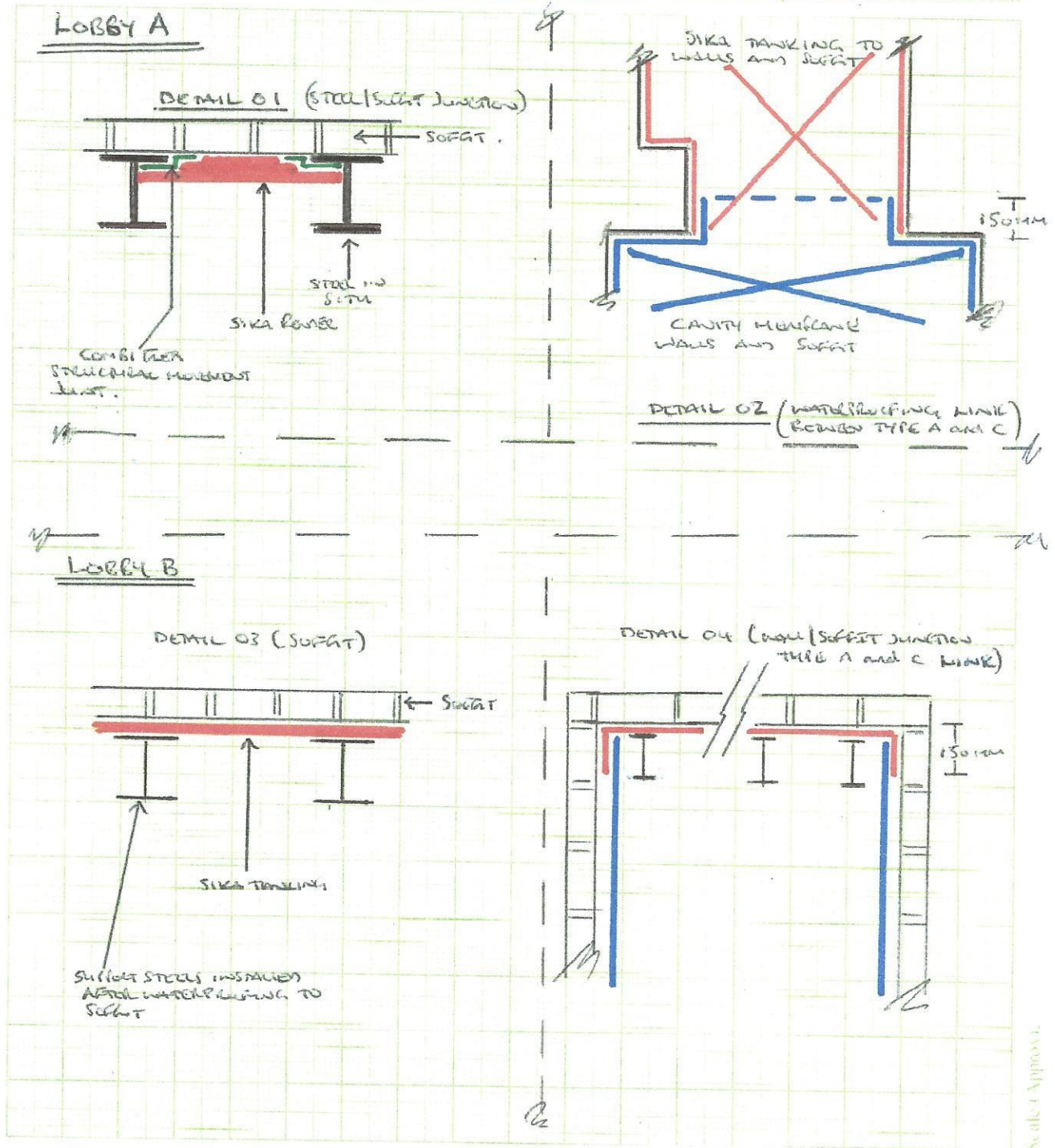
| | | |
|----|----------|----------------|
| 1 | 20160910 | Initial design |
| 2 | 20160910 | Initial design |
| 3 | 20160910 | Initial design |
| 4 | 20160910 | Initial design |
| 5 | 20160910 | Initial design |
| 6 | 20160910 | Initial design |
| 7 | 20160910 | Initial design |
| 8 | 20160910 | Initial design |
| 9 | 20160910 | Initial design |
| 10 | 20160910 | Initial design |

Proposed Lobby Ground Floor Plan
112-113-10-1-10

1609 109 C1

66-67 Guildford Street, London W1M 1DF

1609 109 C1



Site Address: 66-67 GUILDFORD STREET WC1

Estimate Ref. No:

Date: 14th March 2017

KEY

Chemical D.P.C.

Vertical Zones

Specialist 2 coat rendering specification with universal set coat.

Specialist 2 coat rendering specification to wood floor/setatch finish.

Install sleeved Passyfree Vent.

Reduce external ground levels to 150mm below internal floor level.

Waterproof rendering incorporating Sika 1 to wood floor keyed finish.

Waterproof rendering incorporating Sika 1 and universal setting coat finish

Install thermal insulating board. Serim and Set.

Waterproof rendering incorporating Sika 1 to soffits

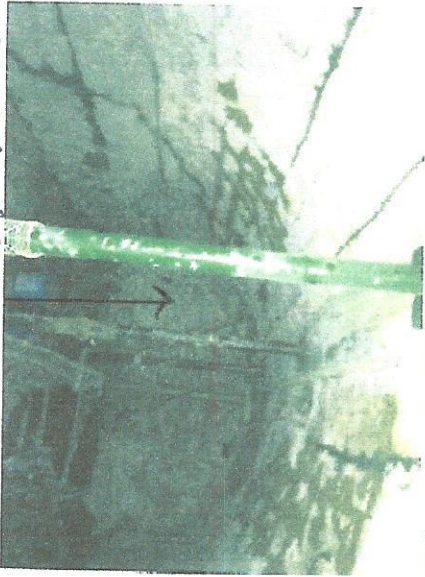
Waterproof screed incorporating Sika 1 to slab.

Waterproof rendering incorporating Sika 1 to height indicated with specialist 2 coat rendering continued up to height in brackets

66-67 Guindon Street loc 1



Steel beams to BC Vancouver Street to Sika marking (loc 1 & A)



Structural beams by Sika.



10th March 2017



Steel beams to BC Vancouver Street Sika marking (loc 1 & B)