

**POLICY D4: NON-DESIGNATED HERITAGE ASSETS Map 4**

Camden Council's Local List specifies Non-Designated Heritage Assets. KTNF has identified eight fine buildings and features omitted from the Local List which KTNF has identified as Non-Designated Heritage Assets.

These comprise:

- Torrano Estate, NW5 2SL,
- Willingham Close Estate, NW5 2UY
- 298 Kentish Town Road, NW5 2TG
- 87 Kentish Town Road, NW1 8NY
- Concrete and mosaic brutalist sculpture situated on the Raglan Estate, Raglan Street NW5 3BX
- The Canopy, Kentish Town Square NW5 2AA
- Leverton Place, NW5 2PL
- Drinking fountain in front of canopy outside Kentish Town Station NW5 2AA

**KTNF would support the inclusion of these Non-Designated Heritage Assets in the Local List on next review.**

**Reasoned Justification**

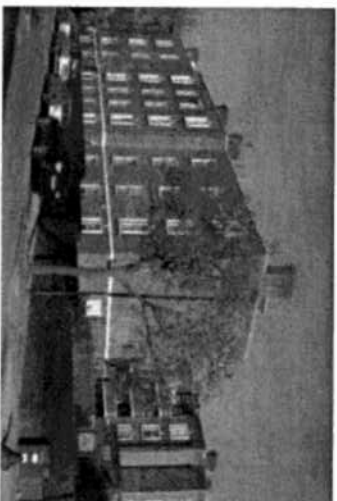
Camden has identified a number of buildings and features in the Kentish Town Area in the 2015 Local List. The Local List consists of buildings and sites in Camden that make a positive contribution to its local character and sense of place. These are known as 'Non-Designated Heritage Assets'.

The criteria used for Camden's Local List are:  
(i) Architectural significance; (ii) Historical significance;  
(iii) Townscape significance; (iv) Social significance.

All assets had to satisfy a minimum of two criteria with at least one being either criteria (i) or (iii). Camden's Local List recognises elements of the

historic environment that are not already designated in another way e.g. buildings listed by Historic England Grade I, II\*, II, or those in Conservation Areas.

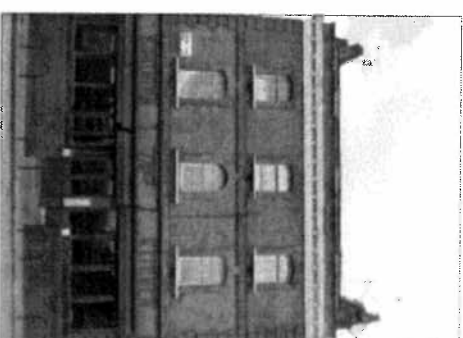
Policy D4 conforms to the NPPF, paragraph 135 and Camden Core Strategy Policy CS14, Development Policy DP25. The following background documents inform Policy D4: CPG1 Design and DP25; Kentish Town Conservation Area Appraisal & Management Strategy (2011); Shaping Neighbourhoods: character and context supplementary planning guidance GLA June 2014; Town Centres SPG Greater London Authority, July 2014.



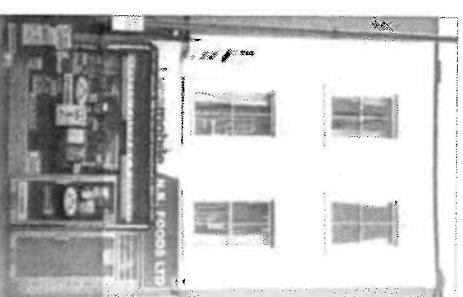
**A Torrano Estate, was built in the 1930's and designed by A. J. Thomas who built Kennistown House (on Camden's Local List) and Camden Town Hall (Grade II listed).**



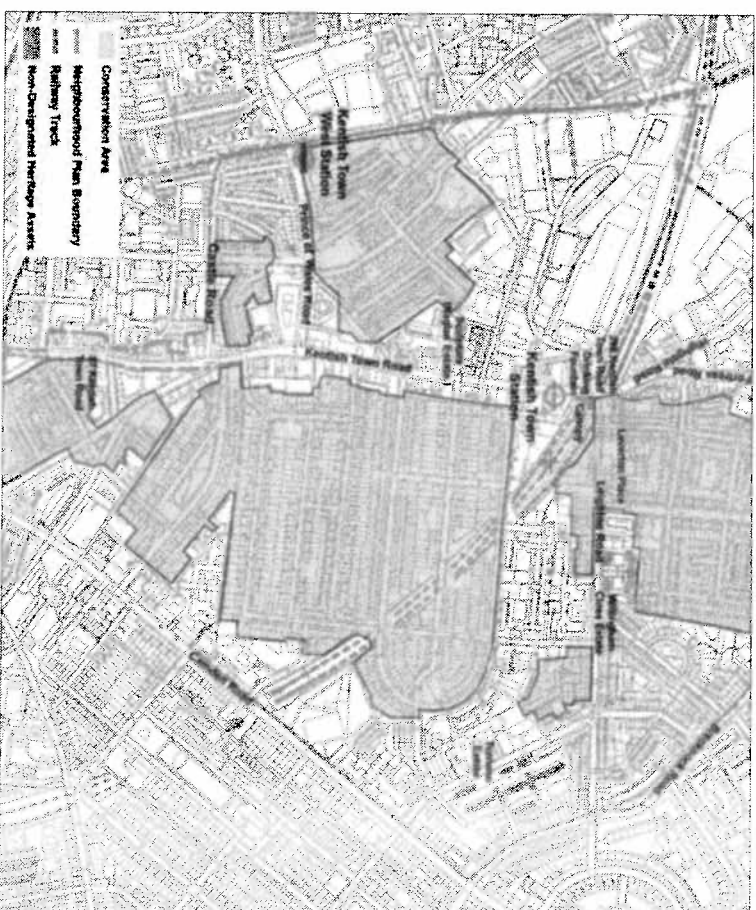
**A Willingham Close Estate, is composed of three blocks. Willingham was built first as news properties and took a direct hit from a bomb. It was rebuilt, followed by Rosemary and Margaret House. The Estate was designed and built by a St Pancras in-house team. It was opened in 1952. Cecil Rhodes House in Camden Town was built using the same basic design. One of the residents says, "The Estate is a wonderful example of council-built buildings. The layout, either by design or luck, has produced a great community spirit among us all and I am a great believer that buildings do affect how people live."**



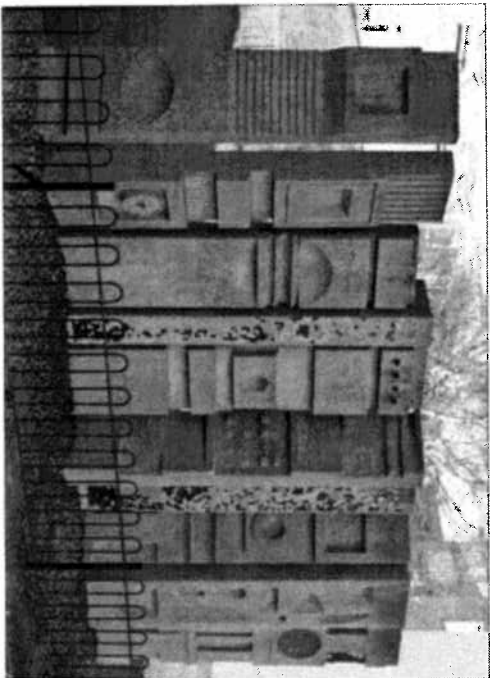
**A 298 Kentish Town Road, Joe's Southern Kitchen, was previously the Kentish Town police station from 1862 – 1895. The building replaced a row of cottages called Hayman's Row. The architect is unknown.**



**A 87 Kentish Town Road was the birthplace, above her father's tobacconist's shop, of Dame Lillian Barker 1874-1955 (first woman Prison Commissioner for England & Wales and significant social campaigner).**

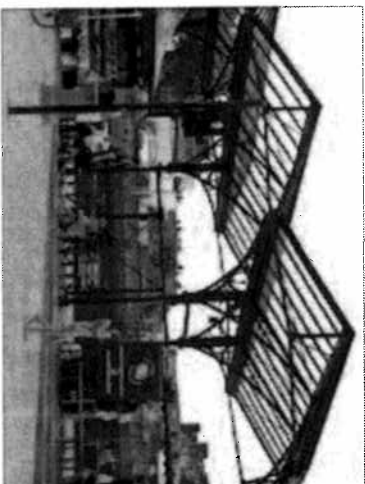


**A Map 4: Non-Designated Heritage Assets**



▲ Concrete and mosaic brutalist sculpture situated on the Raglan Estate, Raglan Street. This is unusual example of 1960's civic art, in need of reconditioning of mosaics.

▼ The Canopy, Kentish Town Square, is a fine example of Victorian station ironwork. Built in Eistree station in 1868. Erected beside Kentish Town Station in 1982.



▲ Leventon Place is a rare example of a virtually intact and continuous granite setted carriage way. Continuity is broken only by some patching and a break where it intersects with Leventon Street. The high quality of setts, gutters and kerbs creates a consistency of setting for the variety of building types in this lane.



▲ Drinking fountain in front of canopy outside Kentish Town Station. Stone fountain erected in 1870 in Memory of Joseph Payne. Inscribed "This Memory of the Just is Biased".

## GETTING AROUND POLICIES

### POLICY GA: STEP-FREE ACCESS IN KENTISH TOWN STATIONS

The implementation of step-free access in rail and underground stations in the KTNF Area will be supported. This policy will be subject to assessment of viability on proposals coming forward.

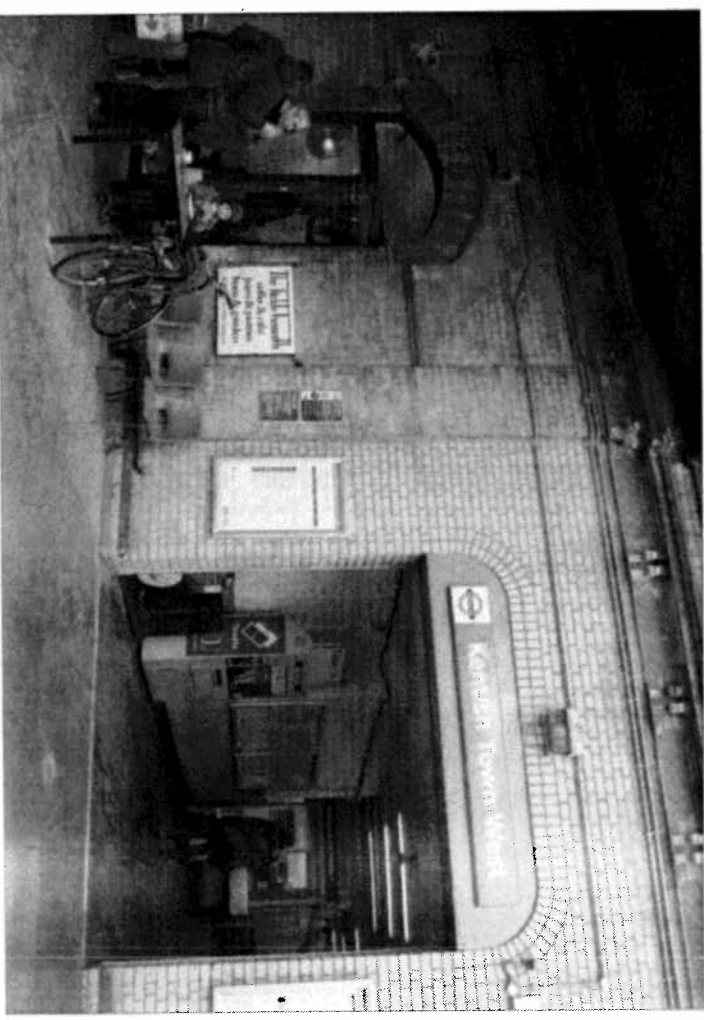
#### Reasoned Justification

KTNF supports the implementation of step-free access in all three railway and underground stations in the KTNF Area: Kentish Town Underground Station (Transport for London), Kentish Town Station (Thameslink), and Kentish Town West Station (London Overground). This policy is location-specific and adds to Local Plan policies. Access is a planning matter and strategic and local policy supports accessibility. Future residential and commercial development will increase demand for transport services and transport provision will have to be made for the disabled and parents with small children.

Subject to viability CIL Levy funding, where appropriate, will be used to help Transport for London, Thameslink and London Overground achieve accessibility. Any development plans,

at any of these stations, must directly address the issue of creating step-free access.

Kentish Town is a central location in London with close proximity to the West End and the City of London. The area offers excellent public transport links to central London and beyond. However, none of the stations in the KTNF Area have step-free access. None of our local stations are scheduled to become step-free in TfL's declared programme 2015-2021. Statistics for all three of these stations show a large number of exits and entrances in 2013 for every day of the week (see *Footfall Statistics in Appendix 5, p.74*) and every year these numbers are recorded by TfL as increasing very steeply. The entries and exits in Kentish Town West station increased by 250% between 2008/2009 and 2013/2014 (567,036 to 1,983,198). The entries and exits in Kentish Town Thameslink station increased



▲ Kentish Town West – London Overground Station