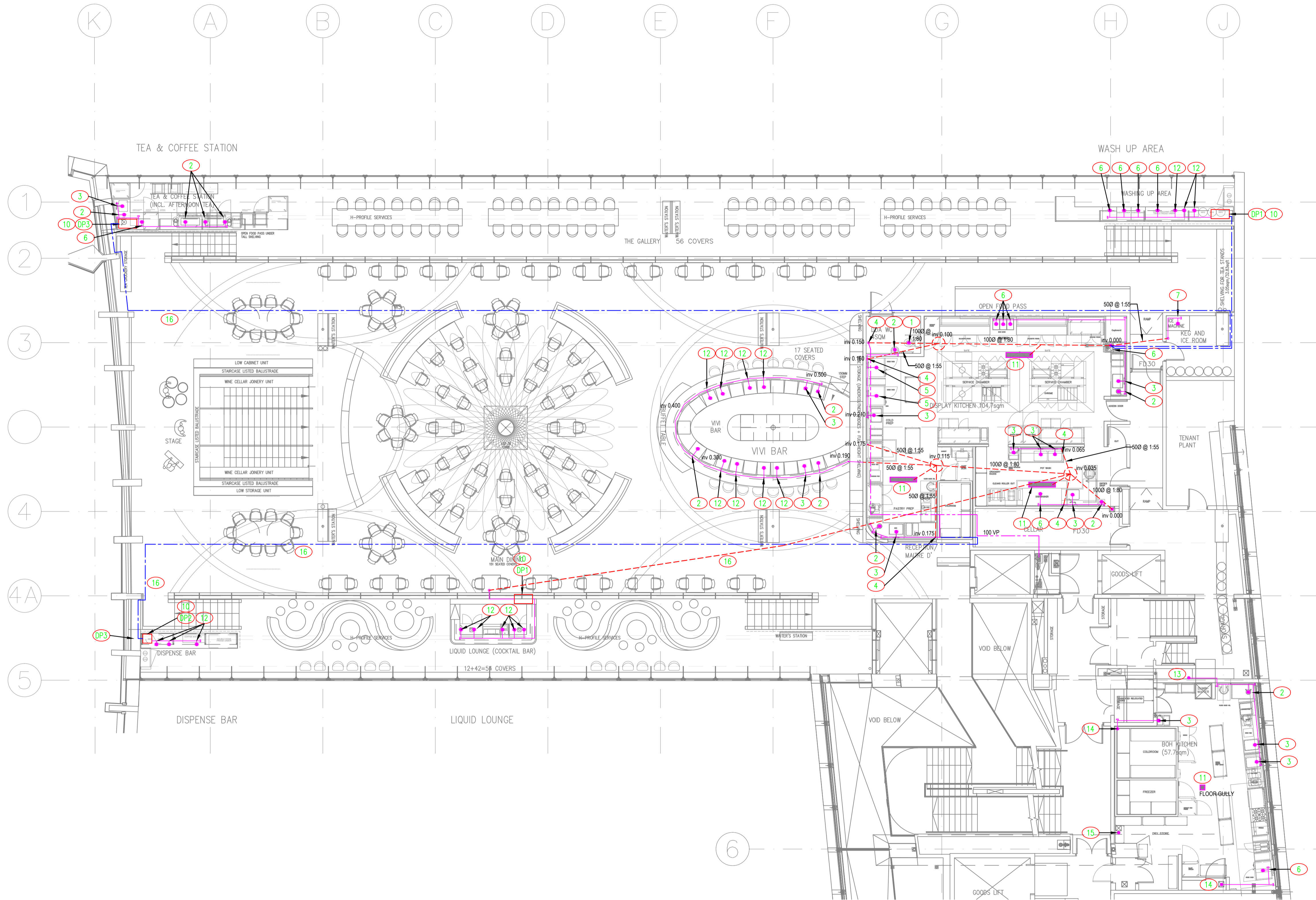


Do Not Scale.
All Figured Dimensions To Be Checked On Site Prior To Construction.
All Copyright Reserved.



- NOTES:**
1. ALL SERVICES/ROUTES THROUGHOUT BUILDING TO BE FULLY COORDINATED ON SITE.
 2. DRAWING TO BE READ IN CONJUNCTION WITH THE INSTALLATION SPECIFICATION AND ALL OTHER RELEVANT DRAWINGS.
 3. ALL SOILS AND WASTES PIPEWORK TO BE UPVC, UNLESS OTHERWISE STATED.
 4. ACCESS POINT TO BE PROVIDED AT ALL CHANGES OF DIRECTIONS FOR MAINTENANCE.
 5. ALL SANITARY APPLIANCES TO BE FITTED WITH ANTY-SIPHON TRAPS WITH 75mm SEAL. TRAPS ON WHBS TO BE CHROME PLATED.
 6. ALL PENETRATION THROUGH FIRE COMPARTMENTS TO BE FIRE STOPPED. SEE ARCHITECTS DRAWING FOR LOCATION. ALL PENETRATIONS THOUGH FLOORS TO BE FIRE STOPPED.
 7. ACCESS/RODDING POINTS IN STACK TO BE INSTALLED AT ALL LEVELS.
 8. PROVIDE CONNECTIONS FOR CONDENSATE DRAIN IN EACH STACK.

- NOTES:**
- 1 1000 WASTE FROM WC DROPS TO FLOOR VOID
 - 2 320 TRAPPED WASTE FROM WHB TO 500 COMMON
 - 3 420 TRAPPED WASTE FROM SINK TO 500 COMMON
 - 4 COMMON WASTE DROPS TO BELOW
 - 5 500 WASTE FROM APPLIANCE TO 670 COMMON
 - 6 420 WASTE FROM APPLIANCE TO 500 COMMON
 - 7 WASTE FROM ICE MACHINE TO 670 COMMON
 - 8 320 TRAPPED WASTE TO 420 COMMON
 - 9 420 TRAPPED WASTE FROM SINK TO 420 COMMON
 - 10 COMMON WASTE TO DRAINAGE PUMP PUMPED DRAINAGE RISES TO HIGH LEVEL
 - 11 FLOOR GULLY WASTE DROPS TO FLOOR VOID
 - 12 320 WASTE FROM APPLIANCE TO 500 COMMON
 - 13 COMMON WASTE DROPS TO BELOW
 - 14 DRAINAGE FROM ABOVE DROPS TO BELOW IN THIS AREA COMMON WASTE JOINS SVP AT LOW LEVEL & DROPS TO BELOW
 - 15 DRAINAGE FROM ABOVE DROPS TO FLOOR BELOW IN THIS AREA
 - 16 400 PUMPED WASTE
 - 17 PUMPED WASTE CONNECTS TO EXISTING WASTE CONNECTION

- LEGEND:**
- DRAINAGE PIPE AT LOW LEVEL
 - DRAINAGE PIPE AT HIGH LEVEL - PUMP DISCHARGE
 - VENT PIPE AT HIGH LEVEL
 - DRAINAGE PIPE IN FLOOR VOID
 - SP SOIL PIPE
 - WP WASTE PIPE
 - VP VENT PIPE
 - inv PIPE INVERT LEVEL - FROM SSL TO BOTTOM OF PIPE

- PLANT SCHEDULE:**
- DRAINAGE PUMPS**
- DP-1: PUMP TECHNOLOGY DRAIN MAJOR: 60 DUO CW DUAL ALARM, SINGLE PHASE, AND MICROVENT
- DP-2: PUMP TECHNOLOGY DRAIN MAJOR: 60 CW HIGH LEVEL ALARM, SINGLE PHASE, AND MICROVENT
- DP-3: PUMP TECHNOLOGY DRAIN MAJOR: 1030 DUO CW DUAL ALARM, SINGLE PHASE, AND MICROVENT
- FLOOR CHANNELS:**
ACO 125 MODULAR, 1200mm LONG, CW SLIP RESISTANT MASH AND SIEVE, 65mm DEEP, HORIZONTAL OUTLET, TOTAL DEPTH MINIMUM 243mm

B	REVISED TENDER ISSUE	HN	24/03/2017
A	TENDER ISSUE	JH	20/03/2017
REV	DETAILS	BY	APP DATE

CLIENT: **RHUBARB**

PROJECT: **R04 - CENTRE POINT**

DRAWING TITLE: **LEVEL 01 - RESTAURANT SOILS AND WASTES**

DRAWN BY: **H.NISIC** APPROVED BY: DATE: **AUG '16**

PROJECT No.: **L1975** DRAWING No.: **M015** SCALE: **1:100**



LEHNDING SERVICES DESIGN LTD
Unit 10, 10 Redlands Crescent, Larnoe, Co. Antrim, N.Ireland, BT40 1FF. Tel: +44(0) 2828 277 123
Global House, Ashley Avenue, Epsom, London, KT18 5AD, Tel: +44(0) 1372 253 207.
Web: www.lehding.co.uk Email: info@lehding.co.uk