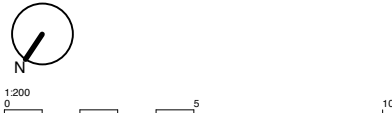


REGNARD BUILDINGS

EUSTON STREET

REV	DATE	COMMENT
A	23.03.17	Planning and Advertisements



NOTES
 Do not scale from this drawing. All dimensions to be confirmed on site. Architect to be informed of any discrepancies before any action is taken. This drawing is copyright © Manalo & White Ltd.

MANALO & WHITE
 ARCHITECTS

UNIT 301, METROPOLITAN WHARF BUILDING,
 70 WAPPING WALL, LONDON E1W 3SS
 T 02072654945 E mail@manaloandwhite.co.uk

PROJECT
 METHODIST INTERNATIONAL CENTRE
 DRAWING
 PROP GA Plan
 SCALE
 1:200 @ A3
 STATUS
 Planning

DRAWING No.	REVISION
859/02/01	A



A 24.03.17 Planning and Advertisements
 REV DATE COMMENT

GA ELEV
 859
 02/21
 859
 02/22



NOTES
 Do not scale from this drawing. All dimensions to be confirmed on site. Architect to be informed of any discrepancies before any action is taken. This drawing is copyright © Manalo & White Ltd.

MANALO & WHITE
 ARCHITECTS

UNIT 301, METROPOLITAN WHARF BUILDING,
 70 WAPPING WALL, LONDON E1W 3SS
 T 02072654945 E mail@manaloandwhite.co.uk

PROJECT
 THE WESLEY EUSTON
 DRAWING
 PROP Regnart Bldgs Elevation
 SCALE
 1:100 @ A3
 STATUS
 Planning

REFER TO PARTIAL ELEVATION 859/02/30

DRAWING No. 859/02/20 REVISION A



- 1 Fixed LED wallwash light. White, 3000-4000K
- 2 Fixed linear LED light illuminating signage. White, 3000-4000K
- 3 Traditional non-illuminated projecting sign. Approximately 900 x 600mm
- 4 Menu board. Illuminated with LED strip. Approximately 315 x 400mm
- 5 Daily menu blackboard fixed to railings. Approximately 800 x 1000mm
- 6 Internally illuminated projecting signboard. Approximately 600 x 2000mm
- 7 Fixed LED spotlight illuminating side of canopy signage. White, 3000-4000K
- 8 Patterned stainless steel fascia
- 9 Existing doors to remain
- 10 Text approximately 2500 x 250mm
- 11 Graphic overall size approximately 1800 x 850mm
- 12 Text approximately 1250 x 125mm
- 13 Graphic overall size approximately 900 x 425mm
- 14 Facade floodlighting
- 15 Fascia signage

A 24.03.17 Planning and Advertisements
 REV DATE COMMENT



NOTES
 Do not scale from this drawing. All dimensions to be confirmed on site. Architect to be informed of any discrepancies before any action is taken. This drawing is copyright © Manalo & White Ltd.

MANALO & WHITE
 ARCHITECTS

UNIT 301, METROPOLITAN WHARF BUILDING,
 70 WAPPING WALL, LONDON E1W 3SS
 T 02072654945 E mail@manaloandwhite.co.uk

PROJECT
 THE WESLEY EUSTON
 DRAWING
 PROP Euston Street Elevation
 SCALE
 1:100 @ A3
 STATUS
 Planning

DRAWING No. 859/02/21 REVISION A

ELEVATION CONTINUES ON 859/02/21

EXTENT OF 81-103 EUSTON STREET



- 1 Fixed LED wallwash light. White, 3000-4000K
- 2 Fixed linear LED light illuminating signage. White, 3000-4000K
- 3 Traditional non-illuminated projecting sign. Approximately 900 x 600mm
- 4 Menu board. Illuminated with LED strip. Approximately 315 x 400mm
- 5 Daily menu blackboard fixed to railings. Approximately 800 x 1000mm
- 6 Internally illuminated projecting signboard. Approximately 600 x 2000mm
- 7 Fixed LED spotlight illuminating side of canopy signage. White, 3000-4000K
- 8 Patterned stainless steel fascia
- 9 Existing doors to remain
- 10 Text approximately 2500 x 250mm
- 11 Graphic overall size approximately 1800 x 850mm
- 12 Text approximately 1250 x 125mm
- 13 Graphic overall size approximately 900 x 425mm
- 14 Facade floodlighting
- 15 Fascia signage

REV	DATE	COMMENT
A	24.03.17	Planning and Advertisements



NOTES
Do not scale from this drawing. All dimensions to be confirmed on site. Architect to be informed of any discrepancies before any action is taken. This drawing is copyright © Manalo & White Ltd.

MANALO & WHITE
ARCHITECTS

UNIT 301, METROPOLITAN WHARF BUILDING,
70 WAPPING WALL, LONDON E1W 3SS
T 02072654945 E mail@manaloandwhite.co.uk

PROJECT
THE WESLEY EUSTON

DRAWING
PROP Euston Street Elevation

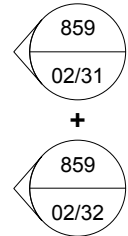
SCALE
1:100 @ A3

STATUS
Planning

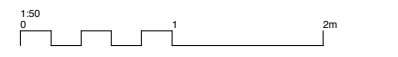
DRAWING No.	REVISION
859/02/22	A



- 1 Fixed LED wallwash light. White, 3000-4000K
- 2 Fixed linear LED light illuminating signage. White, 3000-4000K
- 3 Traditional non-illuminated projecting sign. Approximately 900 x 600mm
- 4 Menu board. Illuminated with LED strip. Approximately 315 x 400mm
- 5 Daily menu blackboard fixed to railings. Approximately 800 x 1000mm
- 6 Internally illuminated projecting signboard. Approximately 600 x 2000mm
- 7 Fixed LED spotlight illuminating side of canopy signage. White, 3000-4000K
- 8 Patterned stainless steel fascia
- 9 Existing doors to remain
- 10 Text approximately 2500 x 250mm
- 11 Graphic overall size approximately 1800 x 850mm
- 12 Text approximately 1250 x 125mm
- 13 Graphic overall size approximately 900 x 425mm
- 14 Facade floodlighting
- 15 Fascia signage



REV	DATE	COMMENT
A	24.03.17	Planning and Advertisements



NOTES
 Do not scale from this drawing. All dimensions to be confirmed on site. Architect to be informed of any discrepancies before any action is taken. This drawing is copyright © Manalo & White Ltd.

MANALO & WHITE ARCHITECTS

UNIT 301, METROPOLITAN WHARF BUILDING,
 70 WAPPING WALL, LONDON E1W 3SS
 T 02072654945 E mail@manaloandwhite.co.uk

PROJECT
 THE WESLEY EUSTON

DRAWING
 PROP Regnart Bldgs Partial Elevation

SCALE
 1:50 @ A3

STATUS
 Planning



- 1 Fixed LED wallwash light. White, 3000-4000K
- 2 Fixed linear LED light illuminating signage. White, 3000-4000K
- 3 Traditional non-illuminated projecting sign. Approximately 900 x 600mm
- 4 Menu board. Illuminated with LED strip. Approximately 315 x 400mm
- 5 Daily menu blackboard fixed to railings. Approximately 800 x 1000mm
- 6 Internally illuminated projecting signboard. Approximately 600 x 2000mm
- 7 Fixed LED spotlight illuminating side of canopy signage. White, 3000-4000K
- 8 Patterned stainless steel fascia
- 9 Existing doors to remain
- 10 Text approximately 2500 x 250mm
- 11 Graphic overall size approximately 1800 x 850mm
- 12 Text approximately 1250 x 125mm
- 13 Graphic overall size approximately 900 x 425mm
- 14 Facade floodlighting
- 15 Fascia signage

REV	DATE	COMMENT
A	24.03.17	Planning and Advertisements



NOTES
 Do not scale from this drawing. All dimensions to be confirmed on site. Architect to be informed of any discrepancies before any action is taken. This drawing is copyright © Manalo & White Ltd.

MANALO & WHITE

ARCHITECTS

UNIT 301, METROPOLITAN WHARF BUILDING,
 70 WAPPING WALL, LONDON E1W 3SS
 T 02072654945 E mail@manaloandwhite.co.uk

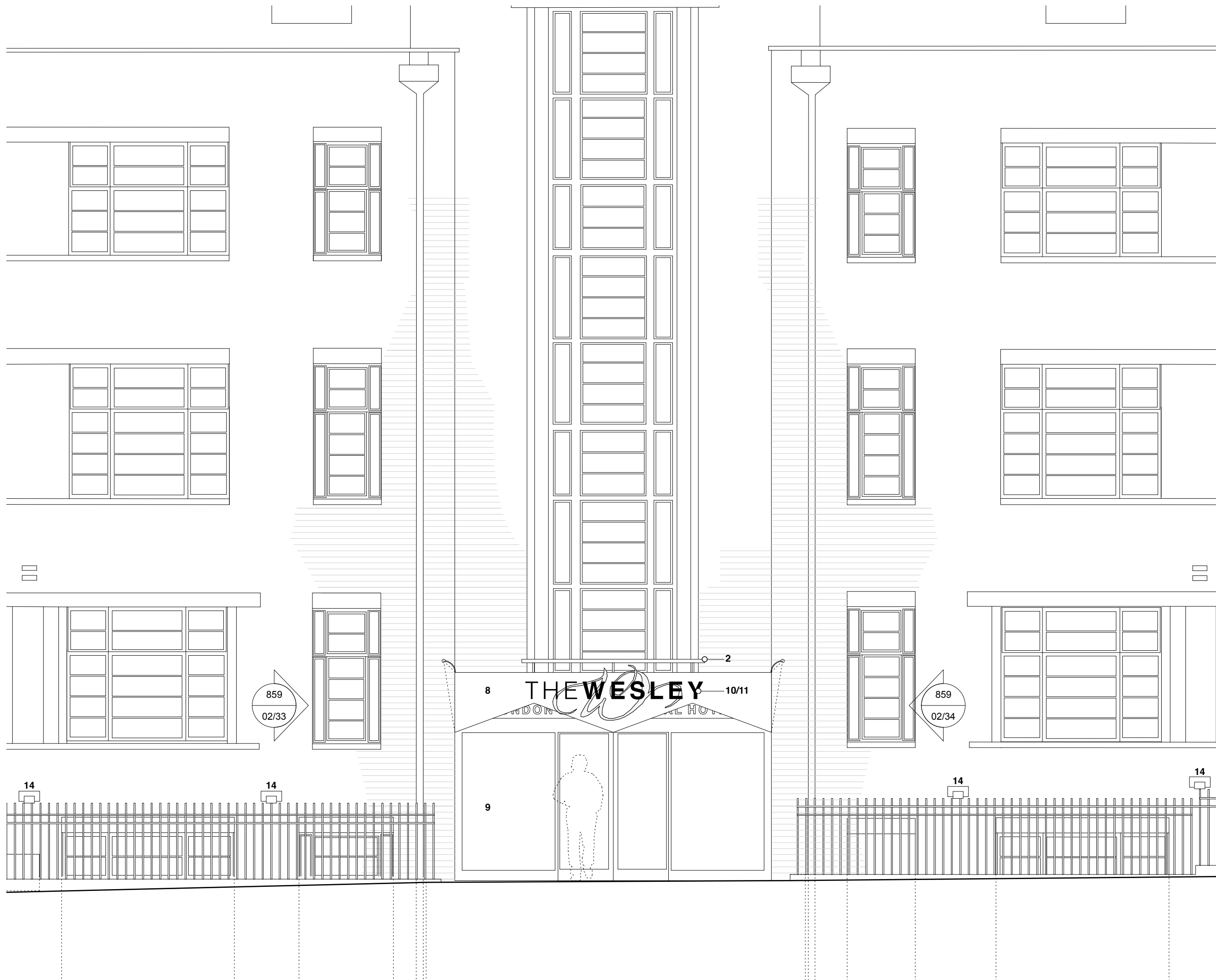
PROJECT
 THE WESLEY EUSTON

DRAWING
 PROP Euston Street Partial Elevation

SCALE
 1:50 @ A3

STATUS
 Planning

DRAWING No. **859/02/31** REVISION **A**



- 1 Fixed LED wallwash light. White, 3000-4000K
- 2 Fixed linear LED light illuminating signage. White, 3000-4000K
- 3 Traditional non-illuminated projecting sign. Approximately 900 x 600mm
- 4 Menu board. Illuminated with LED strip. Approximately 315 x 400mm
- 5 Daily menu blackboard fixed to railings. Approximately 800 x 1000mm
- 6 Internally illuminated projecting signboard. Approximately 600 x 2000mm
- 7 Fixed LED spotlight illuminating side of canopy signage. White, 3000-4000K
- 8 Patterned stainless steel fascia
- 9 Existing doors to remain
- 10 Text approximately 2500 x 250mm
- 11 Graphic overall size approximately 1800 x 850mm
- 12 Text approximately 1250 x 125mm
- 13 Graphic overall size approximately 900 x 425mm
- 14 Facade floodlighting
- 15 Fascia signage

REV	DATE	COMMENT
A	24.03.17	Planning and Advertisements



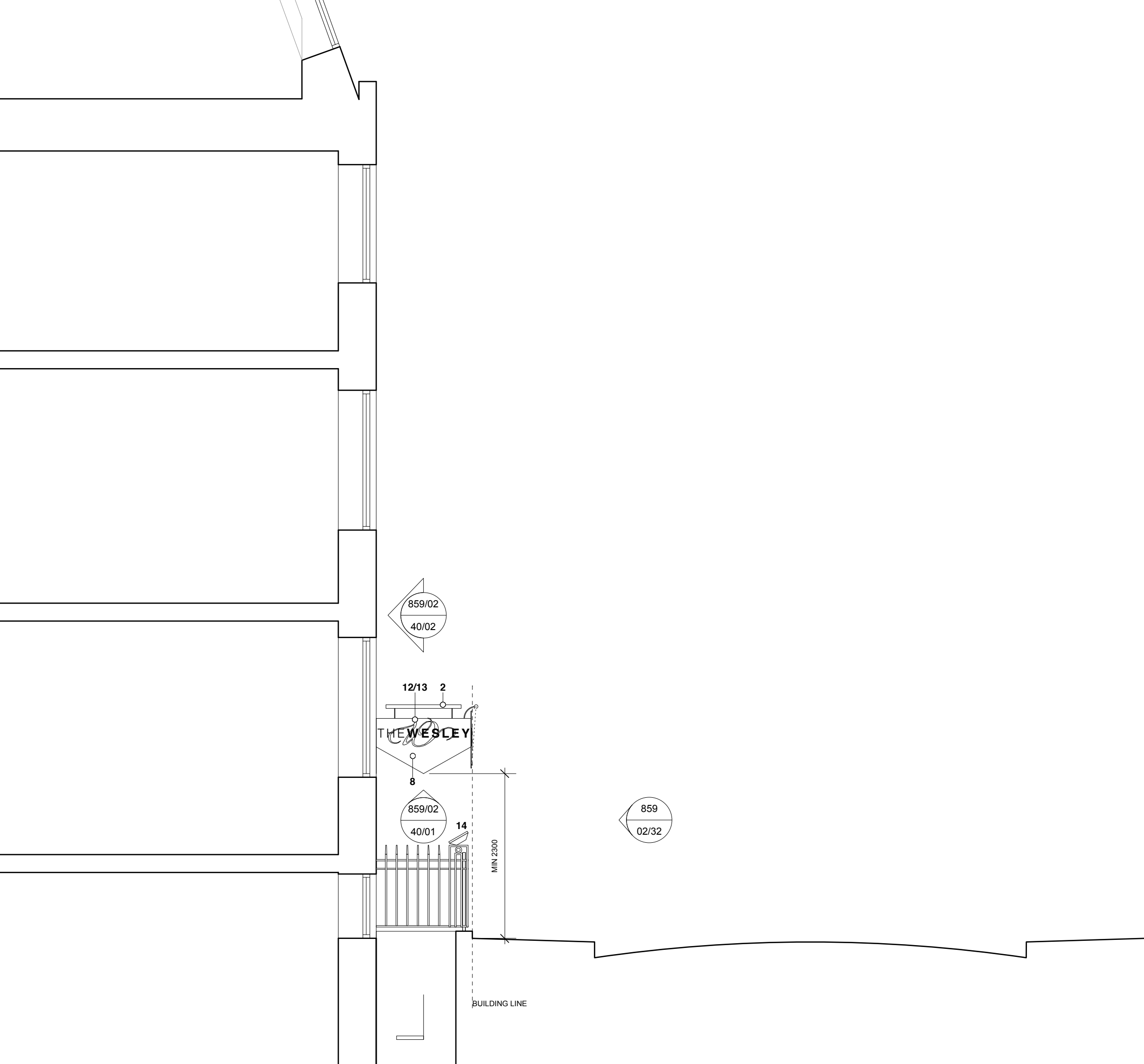
NOTES
Do not scale from this drawing. All dimensions to be confirmed on site. Architect to be informed of any discrepancies before any action is taken. This drawing is copyright © Manalo & White Ltd.

MANALO & WHITE ARCHITECTS

UNIT 301, METROPOLITAN WHARF BUILDING,
70 WAPPING WALL, LONDON E1W 3SS
T 02072654945 E mail@manaloandwhite.co.uk

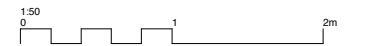
PROJECT
THE WESLEY EUSTON
DRAWING
PROP Euston Street Entrance Elevation
SCALE
1:50 @ A3
STATUS
Planning

DRAWING No. **859/02/32** REVISION **A**



- 1 Fixed LED wallwash light. White, 3000-4000K
- 2 Fixed linear LED light illuminating signage. White, 3000-4000K
- 3 Traditional non-illuminated projecting sign. Approximately 900 x 600mm
- 4 Menu board. Illuminated with LED strip. Approximately 315 x 400mm
- 5 Daily menu blackboard fixed to railings. Approximately 800 x 1000mm
- 6 Internally illuminated projecting signboard. Approximately 600 x 2000mm
- 7 Fixed LED spotlight illuminating side of canopy signage. White, 3000-4000K
- 8 Patterned stainless steel fascia
- 9 Existing doors to remain
- 10 Text approximately 2500 x 250mm
- 11 Graphic overall size approximately 1800 x 850mm
- 12 Text approximately 1250 x 125mm
- 13 Graphic overall size approximately 900 x 425mm
- 14 Facade floodlighting
- 15 Fascia signage

REV	DATE	COMMENT
A	24.03.17	Planning and Advertisements



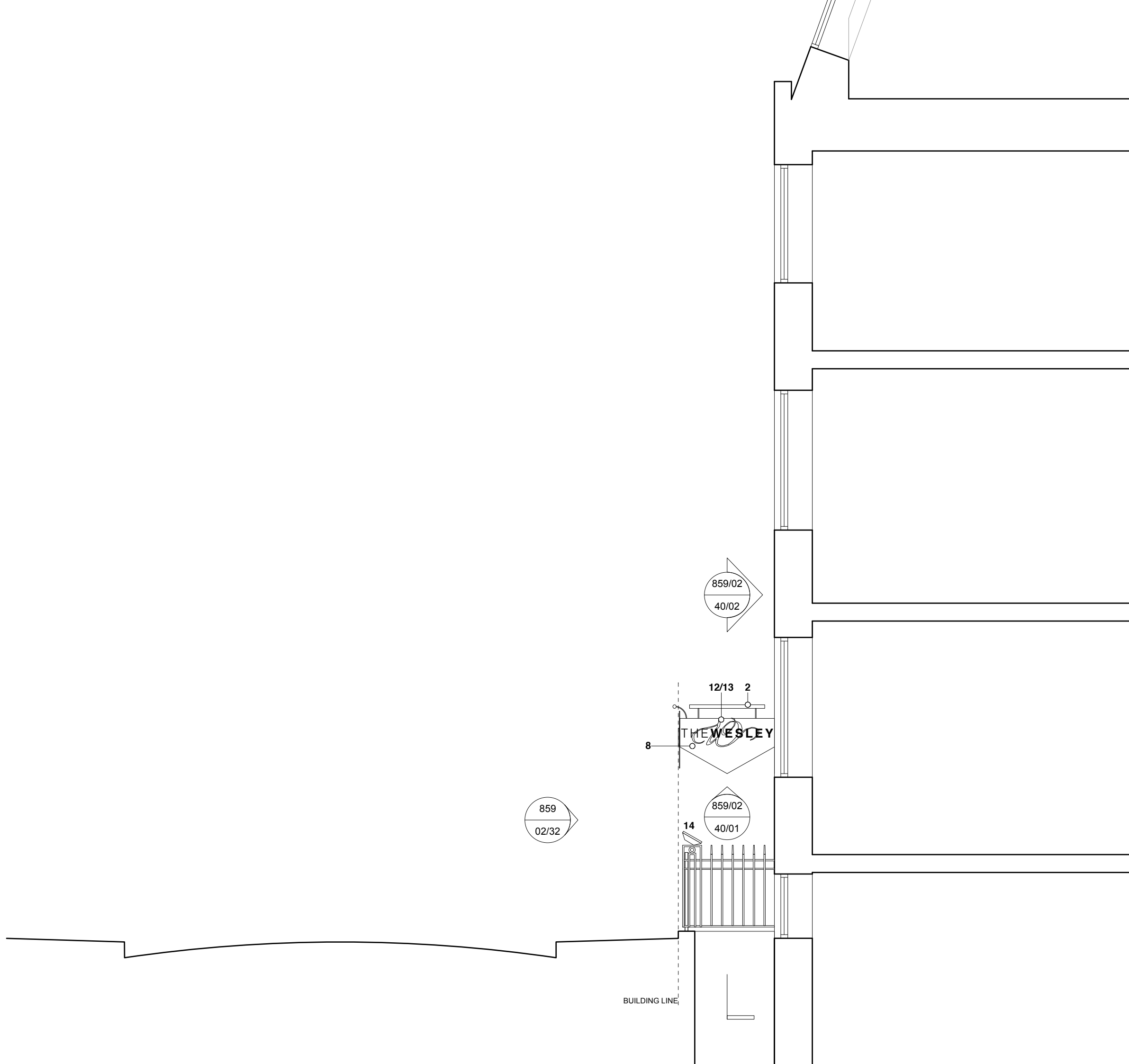
NOTES
 Do not scale from this drawing. All dimensions to be confirmed on site. Architect to be informed of any discrepancies before any action is taken. This drawing is copyright © Manalo & White Ltd.

MANALO & WHITE ARCHITECTS

UNIT 301, METROPOLITAN WHARF BUILDING,
 70 WAPPING WALL, LONDON E1W 3SS
 T 02072654945 E mail@manaloandwhite.co.uk

PROJECT
 THE WESLEY EUSTON
 DRAWING
 PROP Euston Street Entrance Section
 SCALE
 1:50 @ A3
 STATUS
 Planning

DRAWING No. **859/02/33** REVISION **A**



- 1 Fixed LED wallwash light. White, 3000-4000K
- 2 Fixed linear LED light illuminating signage. White, 3000-4000K
- 3 Traditional non-illuminated projecting sign. Approximately 900 x 600mm
- 4 Menu board. Illuminated with LED strip. Approximately 315 x 400mm
- 5 Daily menu blackboard fixed to railings. Approximately 800 x 1000mm
- 6 Internally illuminated projecting signboard. Approximately 600 x 2000mm
- 7 Fixed LED spotlight illuminating side of canopy signage. White, 3000-4000K
- 8 Patterned stainless steel fascia
- 9 Existing doors to remain
- 10 Text approximately 2500 x 250mm
- 11 Graphic overall size approximately 1800 x 850mm
- 12 Text approximately 1250 x 125mm
- 13 Graphic overall size approximately 900 x 425mm
- 14 Facade floodlighting
- 15 Fascia signage

REV	DATE	COMMENT
A	24.03.17	Planning and Advertisements



NOTES
Do not scale from this drawing. All dimensions to be confirmed on site. Architect to be informed of any discrepancies before any action is taken. This drawing is copyright © Manalo & White Ltd.

MANALO & WHITE

ARCHITECTS

UNIT 301, METROPOLITAN WHARF BUILDING,
70 WAPPING WALL, LONDON E1W 3SS
T 02072654945 E mail@manaloandwhite.co.uk

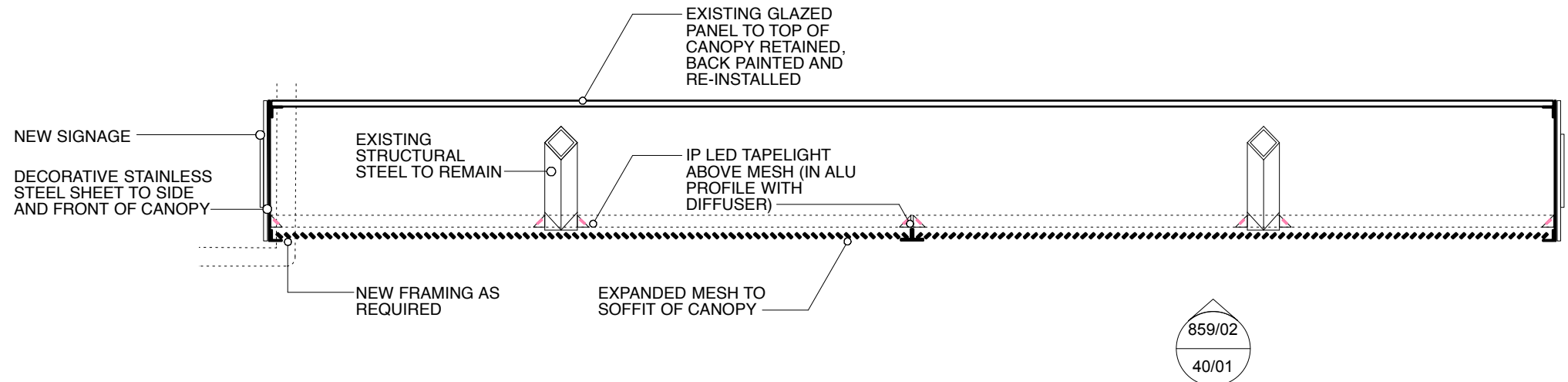
PROJECT
THE WESLEY EUSTON

DRAWING
PROP Euston Street Entrance Section

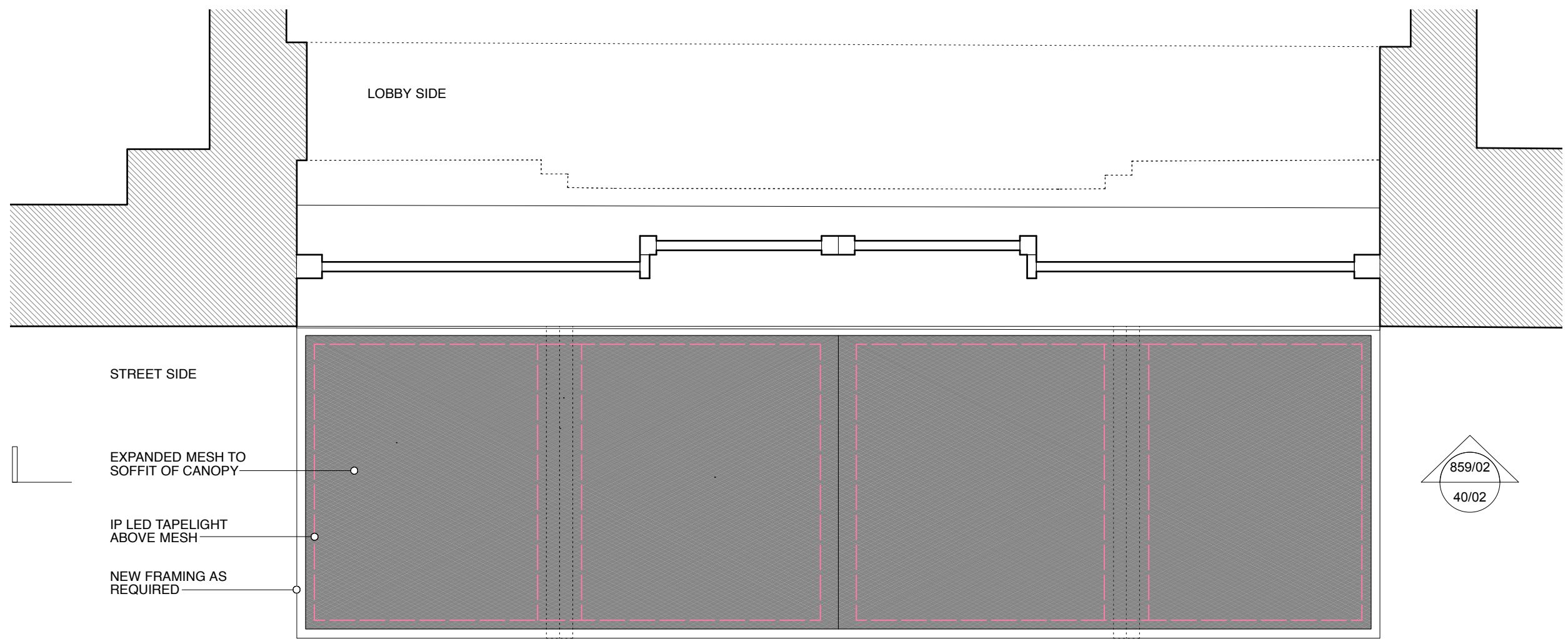
SCALE
1:50 @ A3

STATUS
Planning

DRAWING No. **859/02/34** REVISION **A**

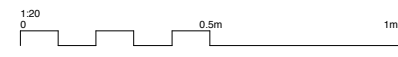


859/02/40/02: ENTRANCE CANOPY TRANSVERSE SECTION



859/02/40/01: ENTRANCE CANOPY REFLECTED UNDERSIDE PLAN

REV	DATE	COMMENT
A	24.03.17	Planning and Advertisements



NOTES
Do not scale from this drawing. All dimensions to be confirmed on site. Architect to be informed of any discrepancies before any action is taken. This drawing is copyright © Manalo & White Ltd.

MANALO & WHITE
ARCHITECTS
UNIT 301, METROPOLITAN WHARF BUILDING,
70 WAPPING WALL, LONDON E1W 3SS
T 02072654945 E mail@manaloandwhite.co.uk

PROJECT
THE WESLEY EUSTON

DRAWING
PROP Euston Street Entrance Canopy

SCALE
1:20 @ A3

STATUS
Planning

DRAWING No.	REVISION
859/02/40	A