

Existing Main Shopfront- High Holborn



Photo Reference of Existing Shopfront



Existing Shopfront Brownlow Street

**bedrock**

Bedrock Design Consultants Ltd  
2nd Floor, 39 Gold Street, Northampton,  
NN1 1RA  
T 01604 250002  
F 01604 250003  
info@bedrockdesign.co.uk

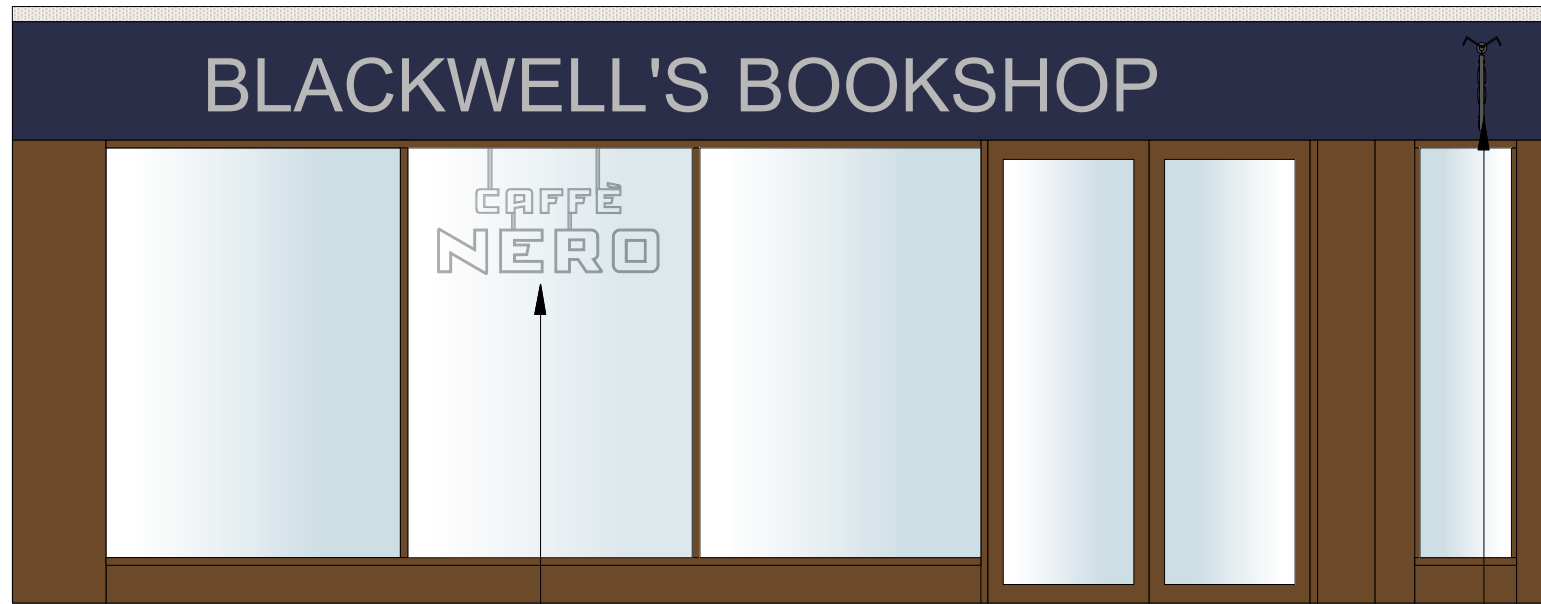
Client Caffe Nero	Scale 1:50@A3	Drawn by BB	Date 07/04/2017
Project Holborn Blackwells	Drawing N° CN800 - 601	Revision A	
Description Existing Shopfront	This drawing is the copyright of Bedrock Design Consultants Ltd. This drawing cannot be copied, reproduced, retained or disclosed to any unauthorised person without prior permission in writing from the designer.		

Rev N°	Description	Drawn by	Date
A	Vinyl sign replaced with aluminium	JDB	13.04.17

**Notes**  
This drawing represents a performance guide upon which the contractor/subcontractor must base his/her working drawings & details. Include all necessary tolerances prior to manufacture and installation.

Contractor to must undertake a full survey of the area to establish all dimensions & ensure accurate setting out.  
Advise on suitability of all details shown to ensure structural stability, ease and economy of construction  
Refer to digital master artwork in regard to all graphic work shown

**CDM Regulations 2015**  
The principal designer as defined under CDM 2015 must be consulted before any action is taken as a result of the use of this drawing for any purpose, unless confirmed expressly in writing by Bedrock that we hold that duty.

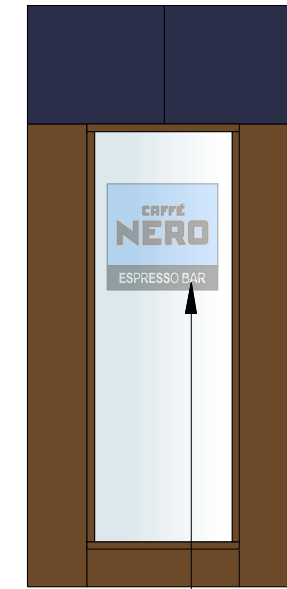


**Internal Caffe Nero Illuminated Sign**

Individual white faced 3D illuminated letters with blackened steel edge. To be fixed to soffit with blackened steel frame & two blackened steel rods. All fixings and wiring to be concealed, please refer to Signage contractors details for more information.

**New Externally illuminated LED Projection Sign**

Fixed to Blackwells fascia. For details refer to specialist signage contractor.



**Hanging Sign**

Caffe Nero square sign with architrave & pegged off letters, hung behind Blackwells shopfront glazing. For details refer to specialist signage contractor.

**Proposed Shopfront- High Holborn**



**New Externally illuminated LED Projection Sign**  
For details refer to specialist signage contractor.

**Aluminium Fascia**  
Caffe Nero blue aluminium fascia applied to the outside face of glazing with Caffe Nero black logo & copper keyline

**Window Manifestations**  
Black vinyl text with copper key line decals applied to the inner face of glass. Clear film applied to the back to help prevent "picking"  
Refer to Stylo Graphics for details

**Proposed Shopfront- Brownlow Street**



Bedrock Design Consultants Ltd  
2nd Floor, 39 Gold Street, Northampton,  
NN1 1RA  
T 01604 250002  
F 01604 250003  
info@bedrockdesign.co.uk

Client Caffe Nero	Scale 1:50@A3	Drawn by BB	Date 07/04/2017
Project Holborn Blackwells	Drawing N° CN800 - 601	Revision A	
Description Proposed Shopfront	This drawing is the copyright of Bedrock Design Consultants Ltd. This drawing cannot be copied, reproduced, retained or disclosed to any unauthorised person without prior permission in writing from the designer.		

Rev N°	Description	Drawn by	Date
A	Vinyl sign replaced with aluminium	JDB	13.04.17

**Notes**  
This drawing represents a performance guide upon which the contractor/subcontractor must base his/her working drawings & details. Include all necessary tolerances prior to manufacture and installation.

Contractor to must undertake a full survey of the area to establish all dimensions & ensure accurate setting out.  
Advise on suitability of all details shown to ensure structural stability, ease and economy of construction  
Refer to digital master artwork in regard to all graphic work shown

**CDM Regulations 2015**  
The principal designer as defined under CDM 2015 must be consulted before any action is taken as a result of the use of this drawing for any purpose, unless confirmed expressly in writing by Bedrock that we hold that duty.