



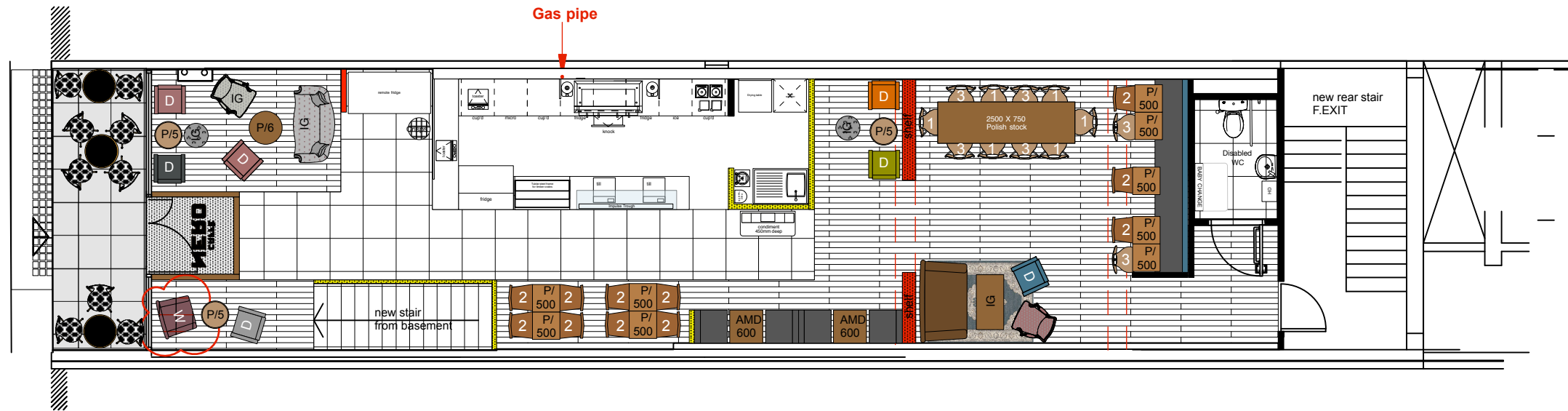
**Notes**  
 This drawing represents a performance guide upon which the contractor/subcontractor must base his/her working drawings & details. Include all necessary tolerances prior to manufacture and installation

Contractor to must undertake a full survey of the area to establish all dimensions & ensure accurate setting out.

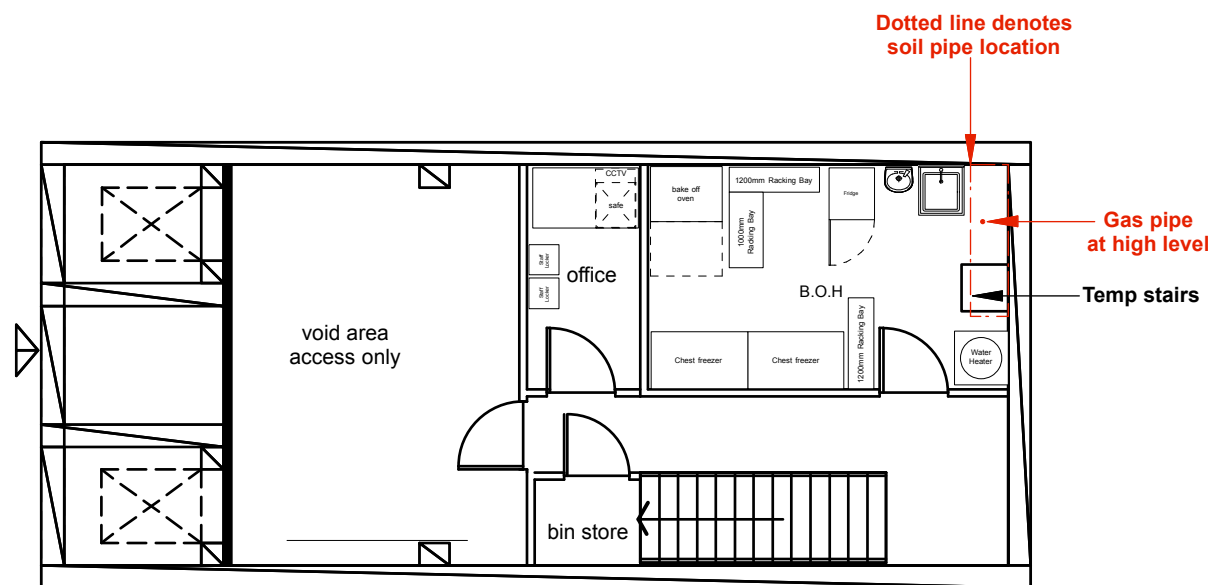
Advise on suitability of all details shown to ensure structural stability, ease and economy of construction

Refer to digital master artwork in regard to all graphic work shown

Rev N°	Description	Drawn by	Date
A	Dims swapped with bar & stair	BB	27/02/2017
B	Furniture Confirmed	BB	07/03/2017



**Ground floor**  
 48 seats  
 9 seats external



**Basement floor**

CDM Regulations 2015  
 The principal designer as defined under CDM 2015 must be consulted before any action is taken as a result of the use of this drawing for any purpose, unless confirmed expressly in writing by Bedrock that we hold that duty.

External Furniture	
	9no. External Rattan chairs
	3no. External Tables
Inn Gear	
	1no. Sofa Upholstered in Sekers fabric HHSG/SA Herringbone Slate Grey
	1no. Armchair Seat back upholstered in Linwood fabric Arcadia LF1855FR/005 Midnight Ramble. Seat base upholstered in Linwood LF1856FR 5 Balsamic
	2no. Stools Linwood LF1856FR 3 Mahogany
	1no. Condiment Unit with tray 1no. Chest 1no. Mirror 2100x1500 1no. Rug 1600x2300mm QTY of Bric a Brac

**bedrock**  
 Bedrock Design Consultants Ltd  
 2nd Floor, 39 Gold Street, Northampton, NN1 1RA  
 T 01604 250002  
 F 01604 250003  
 info@bedrockdesign.co.uk

Client	Caffe Nero
Project	Kentish Town
Description	GA Layout
Scale	1/100 @ A3
Drawn by	RW
Date	13/02/2017
Drawing N°	CN780- 100
Revision	B

This drawing is the copyright of Bedrock Design Consultants Ltd. This drawing cannot be copied, reproduced, retained or disclosed to any unauthorised person without prior permission in writing from the designer.

FURNITURE SCHEDULE	
<p><b>Sherwood</b></p> <p>1 6no. Bentwood Chairs No.16 antique finish Ref: SHE19350</p> <p>2 11no. Cross back chairs in antique finish Ref: SHE19886</p> <p>3 6no. Straight back chairs in antique finish Ref: SHE14130</p> <p>Note: Mix of dark &amp; light coloured chairs</p>	<p>Table Bases:            4no. Coffee antique bases (low) Ref: SHE12051            9no. Antique table base (cafe height medium) Ref: SHE15181</p> <p> 1no. Two-seater spoonback in Linwood Bark SHE14312</p> <p> 1no. Armchair Beatie Weavers point &amp; Hogo SHE13284</p> <p>10no. Assortment of scatter cushions SHE11711</p>
<p> 1no. Dining Chair Harvard Ink SHE13236</p> <p> 1no. Dining Chair Grey Leather SHE17030</p> <p> 2no. Dining chairs Harvard Cinnamon 447, SHE12105</p> <p> 1no. Wingback in Berwick Damson 481 SHE18631</p>	<p> 1no. Dining Chair Berwick Sage SHE16450</p> <p> 1no. Dining Chair Burnt Orange SHE19864</p> <p> 1no. Dining chairs Harvard Noir 949 SHE15855</p> <p><b>AMD</b></p> <p>2no. 600x600mm Rustic Table Top            2no. Scaffold legs (booths)</p>
<p><b>Polish Stock</b></p> <p> 9no. TTS500 square table top</p> <p> 3no. TTR500 circular table top</p> <p> 1no. TTR600 Circular table top</p> <p>1no. CT 2500x750 Comunal Table</p> <p>1no. Crisp stand            Books x 250</p>	