

# Wayleave / Permissions Pack Natwest & RBS

Site: Tavistock, PL19 0AQ

### Overview of Request

This document covers a break down of the BT Delivery of cabling and hardware into a Natwest/RBS Branches that have listed buildings / permissions requirements applying to them.

### Summary of Work

BT Engineering Teams and RBS 3<sup>rd</sup> Party Suppliers will be attending site within the branches and installing new fibre and copper cabling to provide connections to new BT Circuits and Cisco Wireless Access Points (WiFi).

Where possible BT & RBS 3<sup>rd</sup> Party Suppliers will utilise existing cable management containment within the branch sites to install the new cabling. Diagrams/Plans of planned cable runs for the relevant site are contained within this document along with relevant, supporting photo's.

New Cisco Wireless Access Points will be installed within the branch as part of this delivery; these devices provide access to wireless internet access within the site. This document provides diagrams of the new Access Points (referenced as "AP's") locations within the branches and photo's of the proposed installation position

The cable routes described herein with reference to the Wi-Fi access points are assumed and are based on non-intrusive visual inspection of the environment (e.g. no lifting of ceiling \ floor tiles took place in ascertaining the positioning of the access points and the associated cable routes). RBS branches have a managed cable system installed above the ceilings and as such cable routes will predominately be contained within the cable management system.




# Fibre Summary

- Cable would follow the existing tubing and would not require any drilling work on external wall. The only service duct comes through into the outdoor basement fire escape area in BRITISH MEDICAL ASSOCIATION (BMA) MAIN BUILDING side of building as shown in Pic 1 & 2
- There is a requirement to install a gas seal unit as indicated in Pic 3 which shows it will be installed on the wall next to the existing boxes. These are attached with screws to the wall and can be removed if required.
- From the gas seal unit cables will leave the duct entry point and run on existing tray into the false ceiling of disabled toilets in the BMA building. Ref pic 4.
- Cable would utilize the existing tray above the false ceiling and would run through the corridor. Would require an internal drill hole next to one of the existing holes to pass the cable in to the Netwest office. Ref pic 5- 7 for detail.
- Cable goes in Ladies toilet within the bank office and follows the existing cable path and tray to reach the comms room pic 8 – 10 shows the details.
- All the cabling would be above the false ceiling and use the existing cable trays.

# WIFI Cabling/Access point installation Summary

- All cable routes will utilise existing cable runs within the building.
- Please note the floor plans indicate which AP numbers are wall mounted the key is at the top of each floor plan and the numbers correspond to the attached pictures.
  - \* Floor number is located under the respective floor plan
- Drilling will be required to mount Aps (Access points) onto walls or into the ceiling where required –
  - Ground Floor – 2 Ceiling mounted please see floor plan and pictures for the ground floor to see these locations, on the false ceiling and cables will run through existing containment.
  - First Floor – 2 Ceiling mounted please see floor plan and pictures for the first floor to see these locations, on the false ceiling and cables will run through existing containment.
  - Second Floor – 1 Ceiling mounted on the false ceiling and cables will run through existing containment.

# Fibre Pictures

|   |  |   |  |  |  |  |
|---|--|---|--|--|--|--|
| <p><b>Pic1</b></p>  | <p><b>Pic2</b></p>  | <p><b>Pic3</b></p>   | <p><b>Pic4</b></p>   | <p><b>Pic5</b></p>  | <p><b>Pic6</b></p>  | <p><b>Pic7</b></p>  |
| <p><b>Pic8</b></p>  | <p><b>Pic9</b></p>  | <p><b>Pic10</b></p>  | <p><b>Pic11</b></p>  | <p><b>Pic12</b></p>  | <p><b>Pic13</b></p>  | <p><b>Pic14</b></p>  |
| <p><b>Pic15</b></p>   | <p><b>Pic16</b></p>  | <p><b>Pic17</b></p>   | <p><b>Pic18</b></p>  | <p><b>Pic19</b></p>  | <p><b>Pic20</b></p>  | <p><b>Pic21</b></p>  |

# Cable Run & Installation Points to Provide New Wireless Access Points (AP's)

AP Positions for Installation  
Tavistock 602149  
Ground floor  
2 APs



# AP Pictures Ground Floor

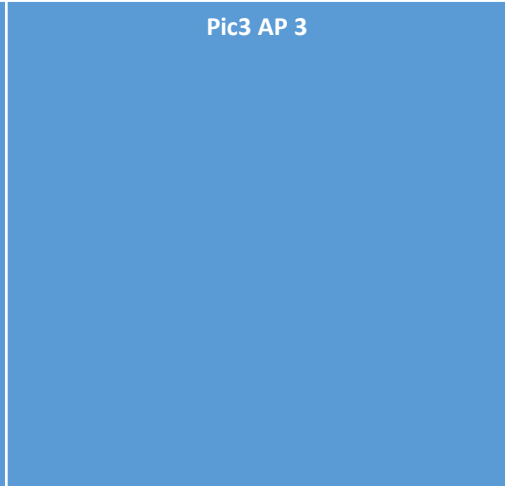
Pic1 AP 1



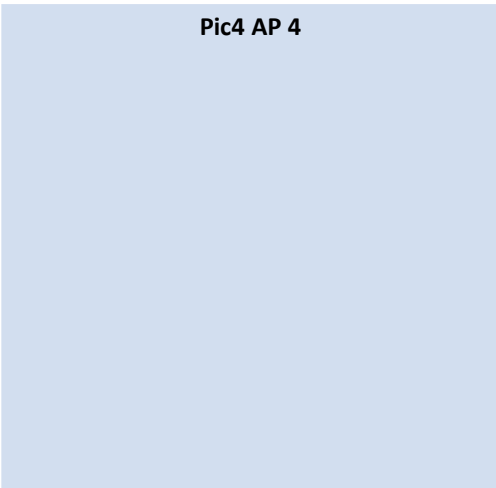
Pic2 AP 2



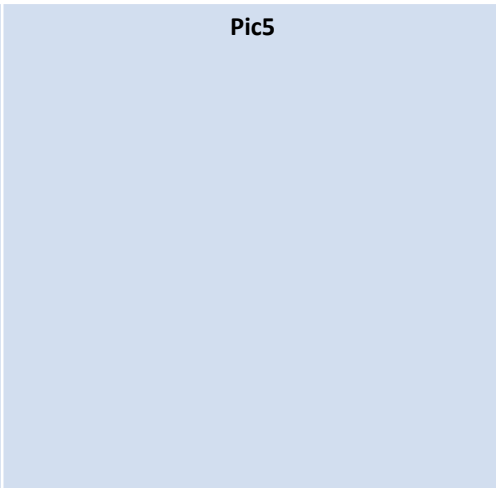
Pic3 AP 3



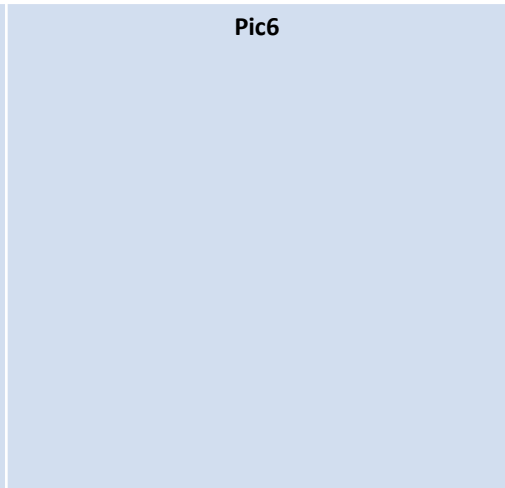
Pic4 AP 4



Pic5

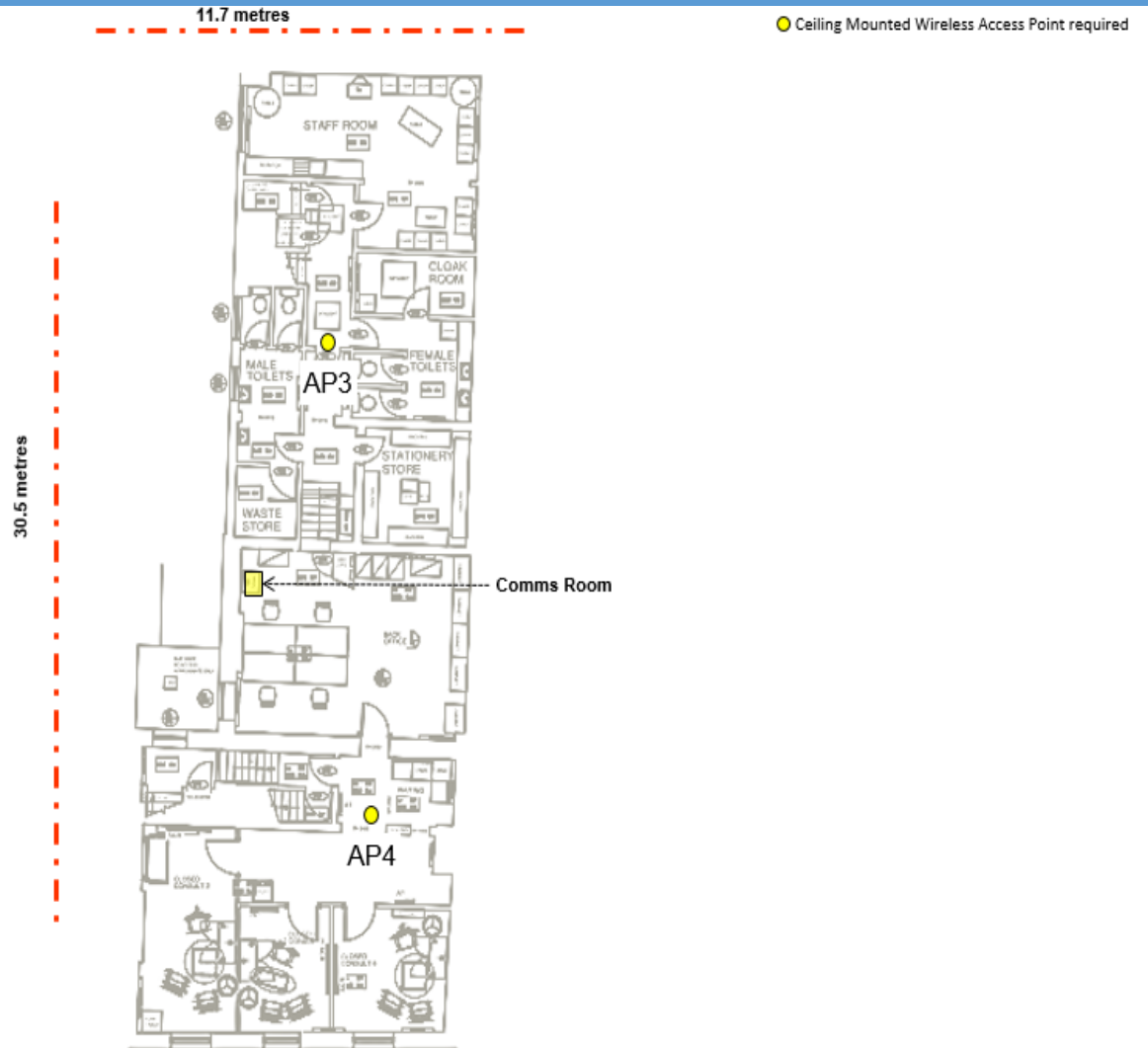


Pic6



# Cable Run & Installation Points to Provide New Wireless Access Points (AP's)

AP Positions for Installation  
Tavistock 602149  
First floor  
2 APs



Ground Floor. AP's & Cable Runs



# AP Pictures First Floor

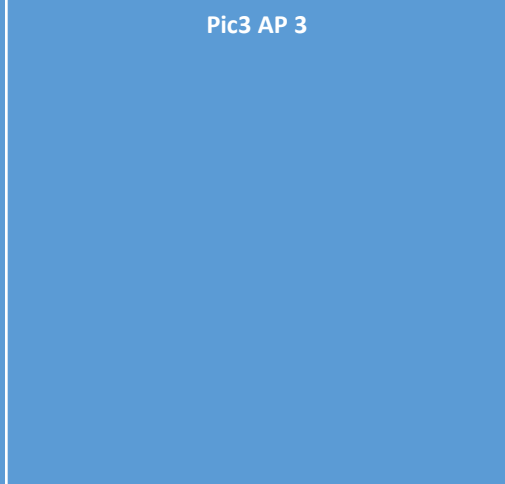
Pic1 AP 3



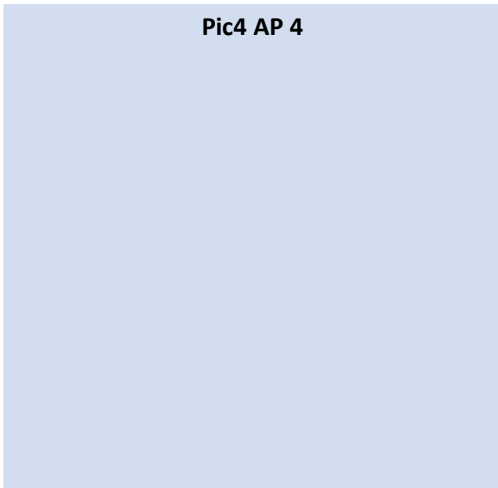
Pic2 AP 4



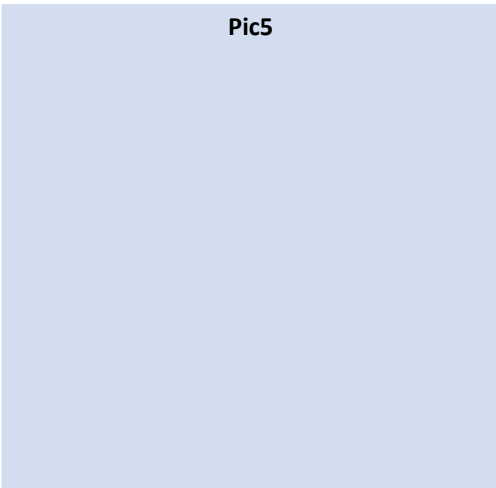
Pic3 AP 3



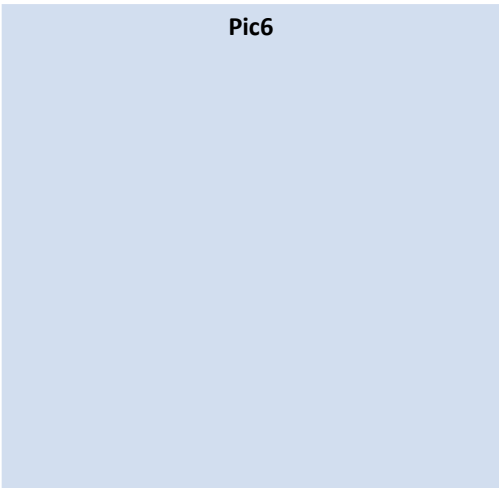
Pic4 AP 4



Pic5

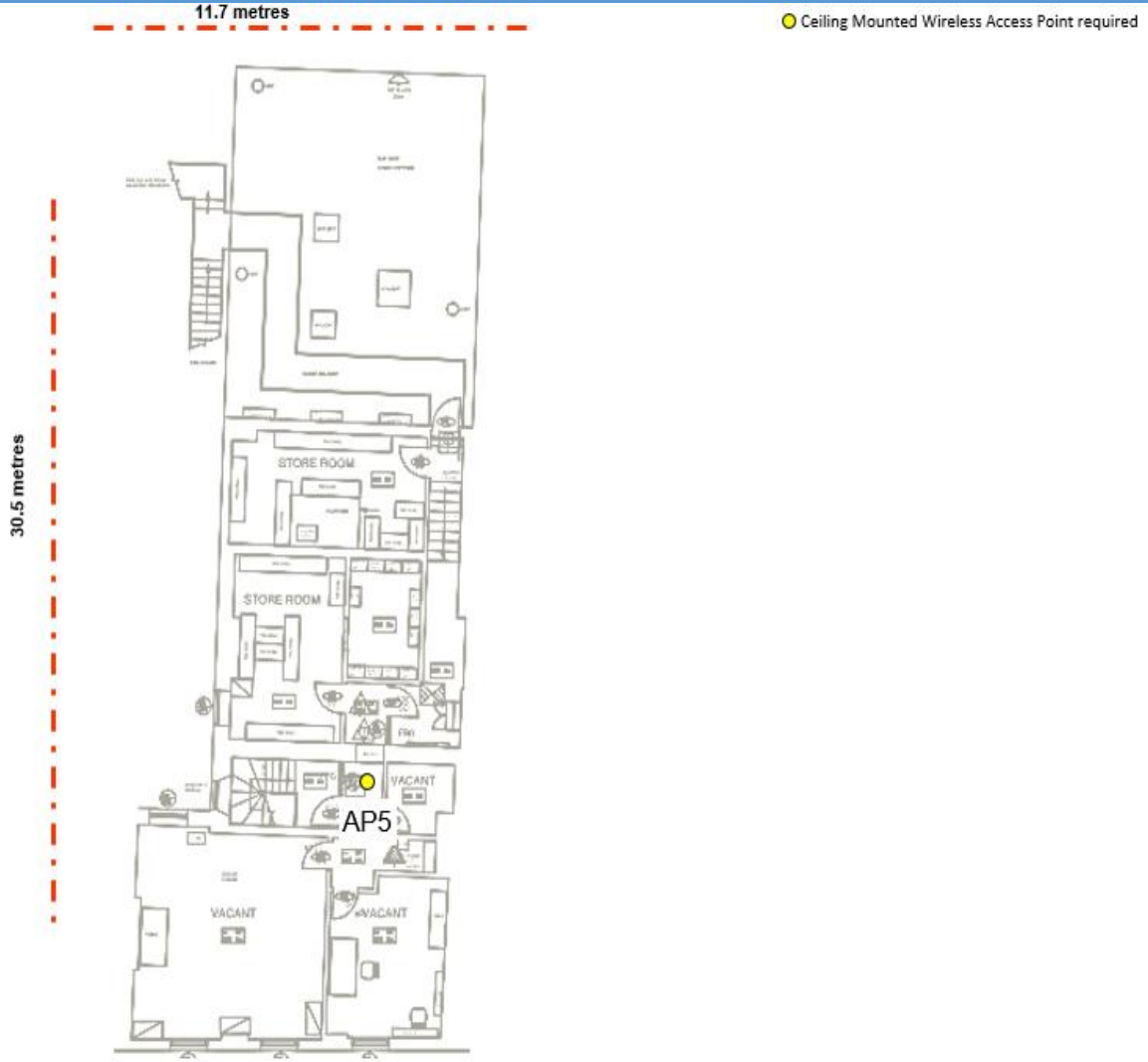


Pic6



# Cable Run & Installation Points to Provide New Wireless Access Points (AP's)

AP Positions for Installation  
Tavistock 602149  
Second floor  
1 AP



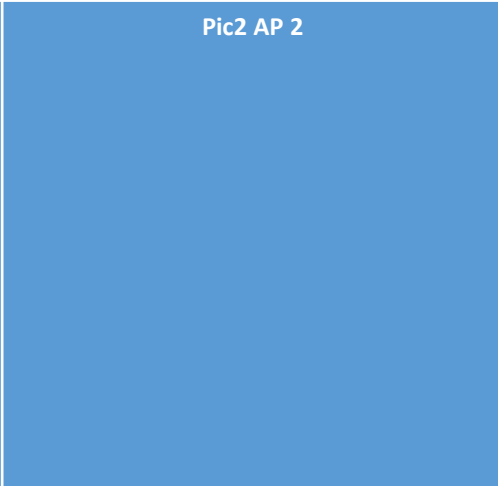
Ground Floor. AP's & Cable Runs

# AP Pictures Second Floor

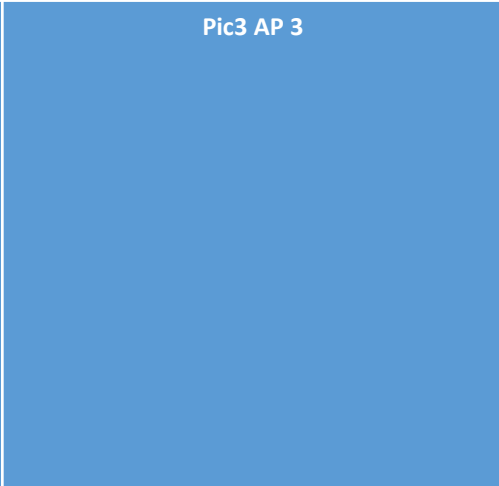
Pic1 AP 5



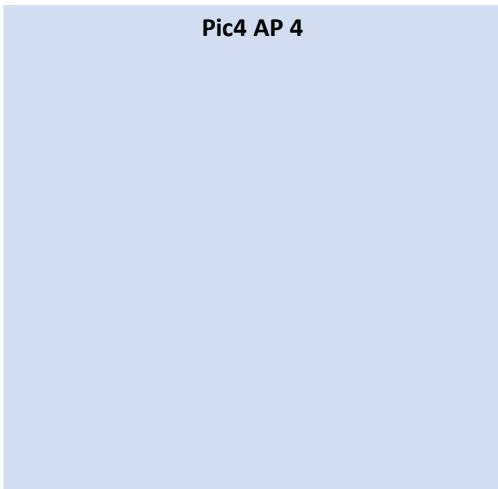
Pic2 AP 2



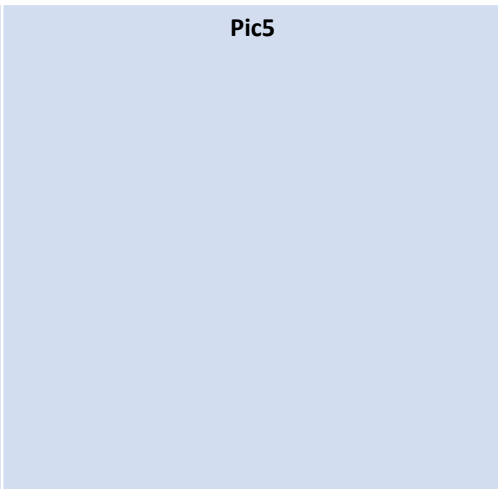
Pic3 AP 3



Pic4 AP 4



Pic5



Pic6

