



home pure KF 410

UPVC &
UPVC/ALUMINIUM WINDOW

TECHNICAL DATA:

Design Modern, square-edged exterior and interior design
Can be perfectly combined with timber/aluminium windows due to same outside appearance

Thermal insulation Thermal insulation with standard triple glazing and highly thermally insulating edge seal
($U_g = 0.5 \text{ W/m}^2\text{K}$) $U_w = 0.72 \text{ W/m}^2\text{K}$

For best energy efficiency SOLAR+ glazing ($U_g = 0.6 \text{ W/m}^2\text{K}$; g value 62 %) $U_w = 0.79 \text{ W/m}^2\text{K}$

Sound insulation Soundproofing up to 45 dB (with corresponding glazing)

System description 90/93 mm construction depth

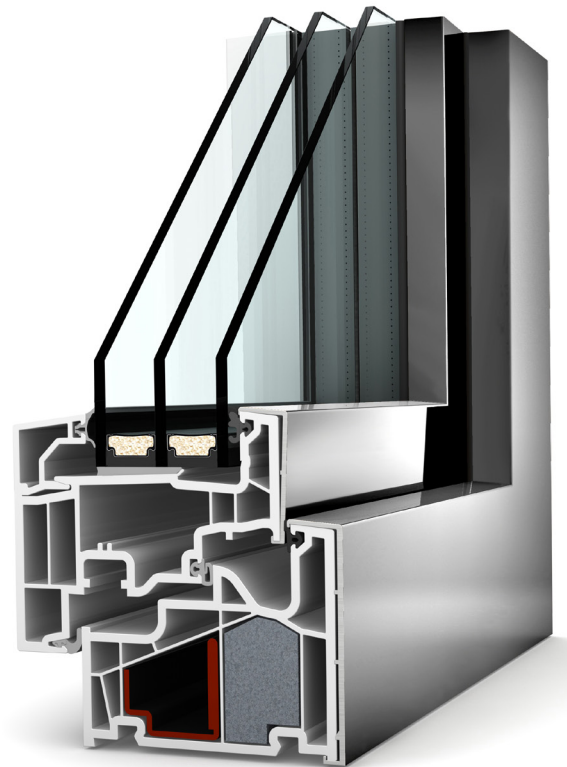
FIX-O-ROUND Technology
Fully concealed standard hardware
Standard security
Triple gasket system

5 chamber system with highly heat insulating thermal foam (HCFC, HFC and FC free)

Upon request with I-tec ventilation

I-tec **I-tec Glazing** 

I-tec Ventilation

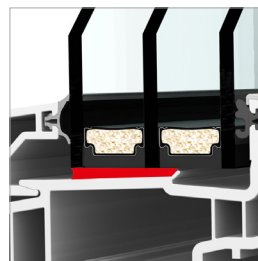


Passive house certified in the standard version



UPVC VERSION

Alongside the aluminium clad version in all colours, the classical white UPVC version is also available.



I-TEC GLAZING FIX-O-ROUND TECHNOLOGY

Continuous all around fixing of the glass pane for better stability, thermal and sound insulation, burglary protection and functioning security.

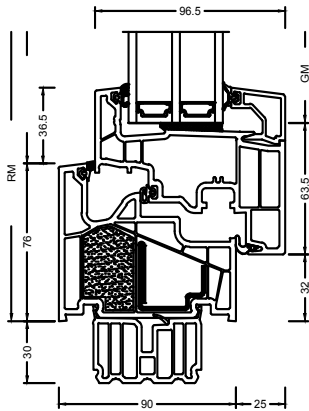


I-TEC VENTILATION

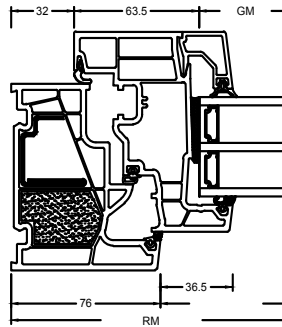
Individual control of fresh air for every room: without big heat losses, without pollen pollution, without outside noise and with increased security.

Sectional drawings

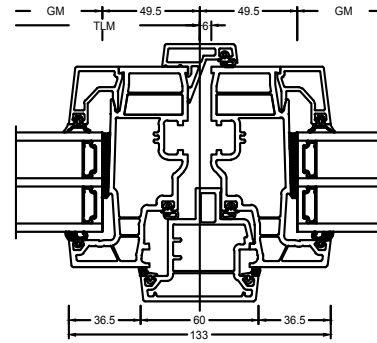
Vertical section



Horizontal section

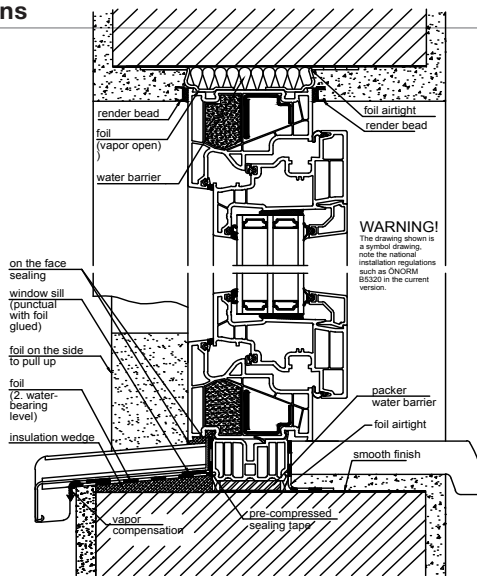


Flying mullion section

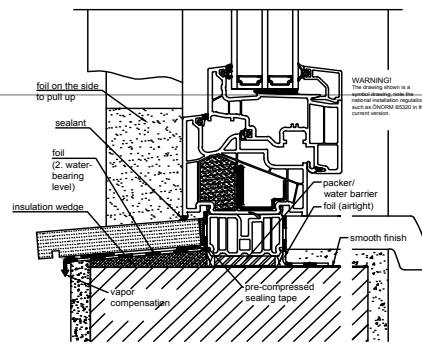


Construction connections

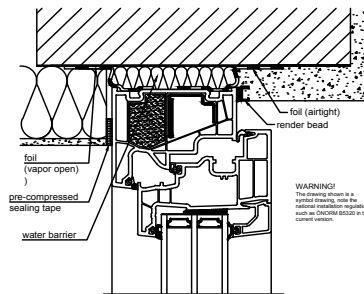
render inside and outside.
 Alu sill on the bottom.



building connection with stone-window sill.

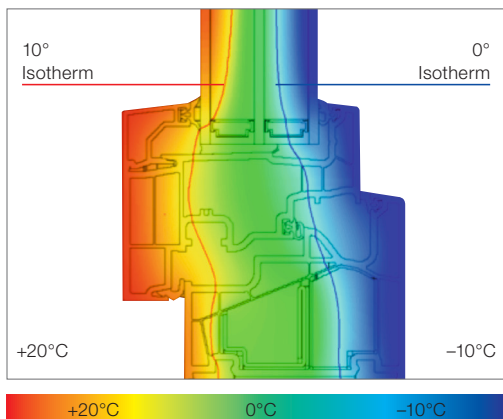


Upper connection with thermal insulation.



ATTENTION! The depicted drawing is symbolical only, please observe national fitting instructions such as ÖNORM B5320 in its respective valid version.

Technical information



Optimal isotherm gradient to ensure low amounts of condensation

Due to the deep glass position, tremendous construction depth and the directly glued window panes glazing LIGHT ($U_g = 0.5 \text{ W/m}^2\text{K}$) achieves a U_w value of $0.72 \text{ W/m}^2\text{K}$ (with ISO spacer).

5 chamber UPVC profile with highly heat insulating thermal foam (HCFC, HFC and FC free) and sendzimir-galvanised reinforcement iron in frame.

- Inside: available in white or decor colour dark grey
- Outside: available with aluminium clad in all RAL colours as well as attractive timber decor, metallic decor, HF, HFM and ‚stainless steel look‘ colours
- Frame profile with construction depth of 90/93 mm
- Sash profile with construction depth of 96.5 mm
- 2 gaskets in sash profile (stopper and centre gasket) in light grey
- Stopper gaskets in frame with UPVC version light grey, with UPVC/aluminium version – choice of light grey or black
- Frame and post connections are welded
- Glazing thickness: 48 and 56 mm
- Fitting versions: wall cramp, rawl plug or screw fitting

Values

System	Glass construction	Glass code	Spacer	Coating	Ug	Uf	Psi	Σ	Thermal certificate	Rw	C	Cb	Sound certificate
KF410	4b/18Ar/4/18Ar/b4	3N2	Iso	light	0.5	0.96	0.033	0.72	yes	34	-2	-6	yes
				solar+	0.6	0.96	0.033	0.79	yes	34	-2	-6	yes
			Alu	light	0.5	0.96	0.073	0.82	yes	34	-2	-6	yes
				solar+	0.6	0.96	0.073	0.89	yes	34	-2	-6	yes
	6b/18Ar/4/16Ar/b4	33U	Iso	light	0.5	0.96	0.033	0.72	yes	40	-2	-6	yes
				solar+	0.6	0.96	0.033	0.79	yes	40	-2	-6	yes
			Alu	light	0.5	0.96	0.073	0.82	yes	40	-2	-6	yes
				solar+	0.6	0.96	0.073	0.89	yes	40	-2	-6	yes
	4b/16Ar/4/15Ar/ b44.2(VSG-S)	34N	Iso	light	0.6	0.96	0.033	0.79	yes	42	-3	-8	yes
				solar+	0.7	0.96	0.033	0.86	yes	42	-3	-8	yes
			Alu	light	0.6	0.96	0.073	0.89	yes	42	-3	-8	yes
				solar+	0.7	0.96	0.073	0.96	yes	42	-3	-8	yes
	6b/18Ar/5/18Ar/ b44.2(VSG-S)	3NT	Iso	light	0.5	0.96	0.033	0.72	yes	43			no
				solar+	0.6	0.96	0.033	0.79	yes	43			no
			Alu	light	0.5	0.96	0.073	0.82	yes	43			no
				solar+	0.6	0.96	0.073	0.89	yes	43			no
	8b/16Ar/5/18Ar/ b44.2(VSG-S)	3NU	Iso	light	0.5	0.96	0.033	0.72	yes	44			no
				solar+	0.6	0.96	0.033	0.79	yes	44			no
			Alu	light	0.5	0.96	0.073	0.82	yes	44			no
				solar+	0.6	0.96	0.073	0.89	yes	44			no
	44b.2(VSG-S)/15Ar/ 4/12Ar/b44.2(VSG-S)	3FH	Iso	light	0.7	0.96	0.033	0.86	yes	45	-1	-5	no
				solar+	0.7	0.96	0.033	0.86	yes	45	-1	-5	no
			Alu	light	0.7	0.96	0.073	0.96	yes	45	-1	-5	no
				solar+	0.7	0.96	0.073	0.96	yes	45	-1	-5	no

System	Glass construction	Glass code	Spacer	Coating	Ug	Uf	Psi	Σ	Thermal certificate	Rw	C	Cb	Sound certificate
KF410 without foam inserts	4b/18Ar/4/18Ar/b4	3N2	Iso	light	0.5	1.1	0.033	0.77	yes	34	-2	-6	no
				solar+	0.6	1.1	0.033	0.84	yes	34	-2	-6	no
			Alu	light	0.5	1.1	0.073	0.87	yes	34	-2	-6	no
				solar+	0.6	1.1	0.073	0.93	yes	34	-2	-6	no
	6b/18Ar/4/16Ar/b4	33U	Iso	light	0.5	1.1	0.033	0.77	yes	40	-2	-6	no
				solar+	0.6	1.1	0.033	0.84	yes	40	-2	-6	no
			Alu	light	0.5	1.1	0.073	0.87	yes	40	-2	-6	no
				solar+	0.6	1.1	0.073	0.93	yes	40	-2	-6	no
	4b/16Ar/4/15Ar/ b44.2(VSG-S)	34N	Iso	light	0.6	1.1	0.033	0.84	yes	42	-3	-8	no
				solar+	0.7	1.1	0.033	0.90	yes	42	-3	-8	no
			Alu	light	0.6	1.1	0.073	0.93	yes	42	-3	-8	no
				solar+	0.7	1.1	0.073	1.0	yes	42	-3	-8	no
	6b/18Ar/5/18Ar/ b44.2(VSG-S)	3NT	Iso	light	0.5	1.1	0.033	0.77	yes	43			no
				solar+	0.6	1.1	0.033	0.84	yes	43			no
			Alu	light	0.5	1.1	0.073	0.87	yes	43			no
				solar+	0.6	1.1	0.073	0.93	yes	43			no
	8b/16Ar/5/18Ar/ b44.2(VSG-S)	3NU	Iso	light	0.5	1.1	0.033	0.77	yes	44			no
				solar+	0.6	1.1	0.033	0.84	yes	44			no
			Alu	light	0.5	1.1	0.073	0.87	yes	44			no
				solar+	0.6	1.1	0.073	0.93	yes	44			no
	44b.2(VSG-S)/15Ar/ 4/12Ar/ b44.2 (VSG-S)	3FH	Iso	light	0.7	1.1	0.033	0.90	yes	45	-1	-5	no
				solar+	0.7	1.1	0.033	0.90	yes	45	-1	-5	no
			Alu	light	0.7	1.1	0.073	1.0	yes	45	-1	-5	no
				solar+	0.7	1.1	0.073	1.0	yes	45	-1	-5	no

System	Glass construction	Glass code	Spacer	Coating	Ug	Uf	Psi	Σ	Thermal certificate	Rw	C	Cb	Sound certificate
KF410 with additional foam in reinforcement chamber and window sash	4b/18Ar/4/18Ar/b4	3N2	Iso	light	0.5	0.85	0.033	0.69	yes	34	-2	-6	no
				solar+	0.6	0.85	0.033	0.76	yes	34	-2	-6	no
			Alu	light	0.5	0.85	0.073	0.79	yes	34	-2	-6	no
				solar+	0.6	0.85	0.073	0.86	yes	34	-2	-6	no
	6b/18Ar/4/16Ar/b4	33U	Iso	light	0.5	0.85	0.033	0.69	yes	40	-2	-6	no
				solar+	0.6	0.85	0.033	0.76	yes	40	-2	-6	no
			Alu	light	0.5	0.85	0.073	0.79	yes	40	-2	-6	no
				solar+	0.6	0.85	0.073	0.86	yes	40	-2	-6	no
	4b/16Ar/4/15Ar/ b44.2(VSG-S)	34N	Iso	light	0.6	0.85	0.033	0.76	yes	42	-3	-8	no
				solar+	0.7	0.85	0.033	0.83	yes	42	-3	-8	no
			Alu	light	0.6	0.85	0.073	0.86	yes	42	-3	-8	no
				solar+	0.7	0.85	0.073	0.93	yes	42	-3	-8	no
	6b/18Ar/5/18Ar/ b44.2(VSG-S)	3NT	Iso	light	0.5	0.85	0.033	0.69	yes	43			no
				solar+	0.6	0.85	0.033	0.76	yes	43			no
			Alu	light	0.5	0.85	0.073	0.79	yes	43			no
				solar+	0.6	0.85	0.073	0.86	yes	43			no
	8b/16Ar/5/18Ar/ b44.2(VSG-S)	3NU	Iso	light	0.5	0.85	0.033	0.69	yes	44			no
				solar+	0.6	0.85	0.033	0.76	yes	44			no
			Alu	light	0.5	0.85	0.073	0.79	yes	44			no
				solar+	0.6	0.85	0.073	0.86	yes	44			no
	44b.2(VSG-S)/15Ar/ 4/12Ar/b44.2(VSG-S)	3FH	Iso	light	0.7	0.85	0.033	0.83	yes	45	-1	-5	no
				solar+	0.7	0.85	0.033	0.83	yes	45	-1	-5	no
			Alu	light	0.7	0.85	0.073	0.93	yes	45	-1	-5	no
				solar+	0.7	0.85	0.073	0.93	yes	45	-1	-5	no