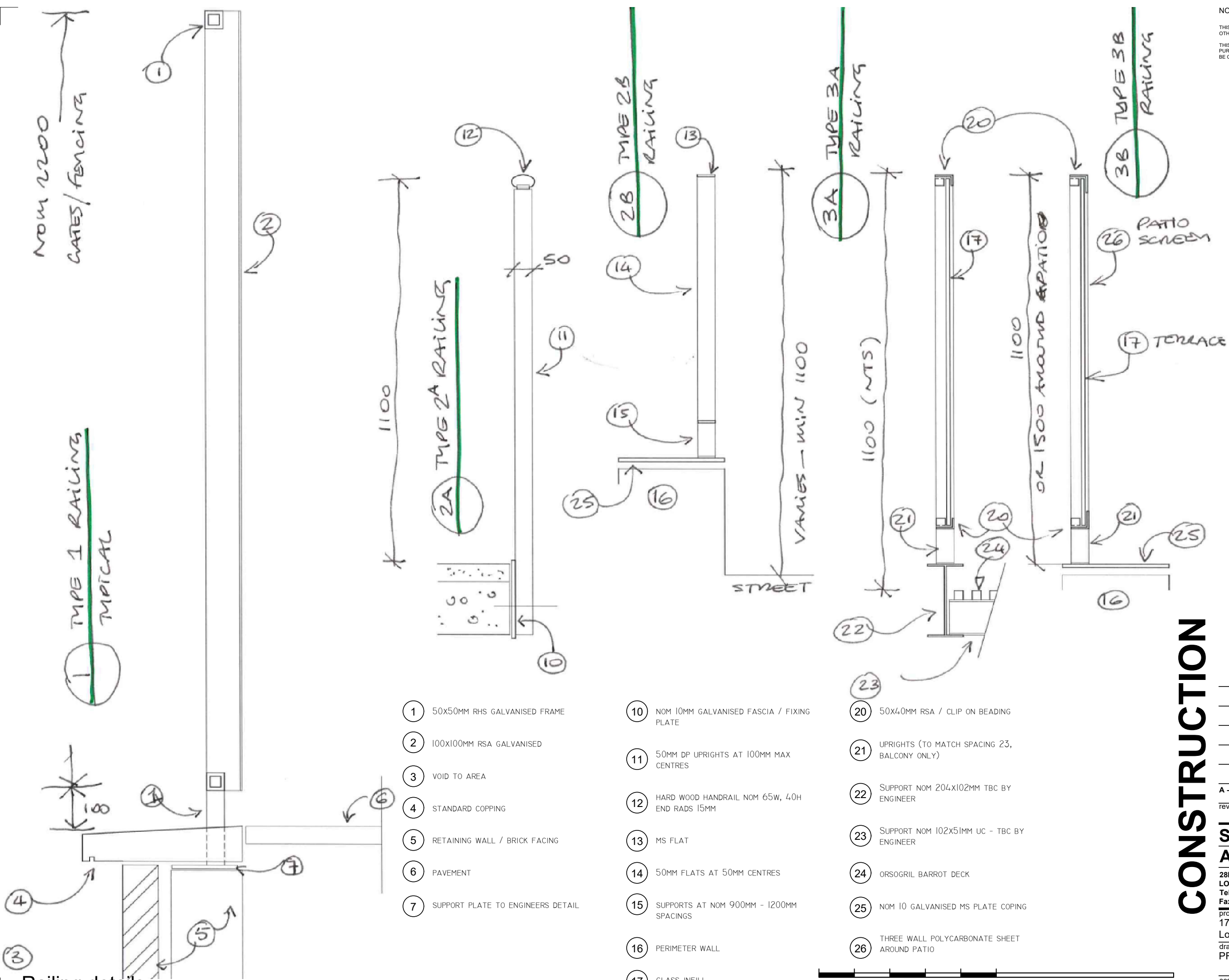
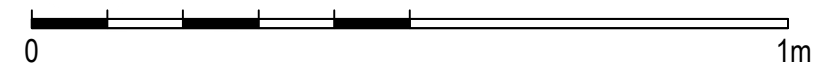


NOTE
 THIS DRAWING IS TO BE READ IN CONJUNCTION WITH ALL OTHER RELEVANT DRAWINGS AND SPECIFICATIONS
 THIS DRAWING HAS BEEN PREPARED FOR IDENTIFICATION PURPOSES ONLY. VERIFICATION OF DRAWN INFORMATION TO BE CARRIED OUT BY CONTRACTOR PRIOR TO OTHER USE.



- ① 50x50MM RHS GALVANISED FRAME
- ② 100x100MM RSA GALVANISED
- ③ VOID TO AREA
- ④ STANDARD COPPING
- ⑤ RETAINING WALL / BRICK FACING
- ⑥ PAVEMENT
- ⑦ SUPPORT PLATE TO ENGINEERS DETAIL
- ⑩ NOM 10MM GALVANISED FASCIA / FIXING PLATE
- ⑪ 50MM DP UPRIGHTS AT 100MM MAX CENTRES
- ⑫ HARD WOOD HANDRAIL NOM 65W, 40H END RADS 15MM
- ⑬ MS FLAT
- ⑭ 50MM FLATS AT 50MM CENTRES
- ⑮ SUPPORTS AT NOM 900MM - 1200MM SPACINGS
- ⑯ PERIMETER WALL
- ⑰ GLASS INFILL
- ⑳ 50x40MM RSA / CLIP ON BEADING
- ㉑ UPRIGHTS (TO MATCH SPACING 23, BALCONY ONLY)
- ㉒ SUPPORT NOM 204x102MM TBC BY ENGINEER
- ㉓ SUPPORT NOM 102x51MM UC - TBC BY ENGINEER
- ㉔ ORSOGRIL BARROT DECK
- ㉕ NOM 10 GALVANISED MS PLATE COPING
- ㉖ THREE WALL POLYCARBONATE SHEET AROUND PATIO



CONSTRUCTION

A - Scale added 04/04/17
 rev

STEVEN ADAMS RIBA ARCHITECTS

28b ENGLANDS LANE
 LONDON NW3 4UE
 Tel 020 7722 7664
 Fax 020 7722 7652

project no
 17 Goldington Crescent 000
 London NW1 1UA
 drawing no
 PROPOSED SKETCH DETAILS DT 04 / A

scale 1:10 @A3 date 08.08.16 drawn RE checked SAA

Railing details