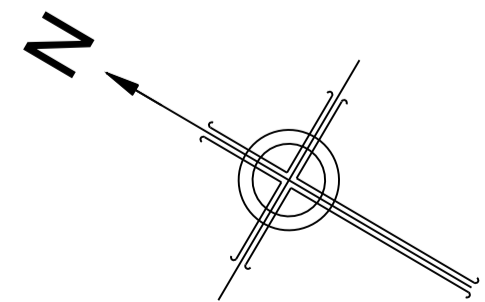
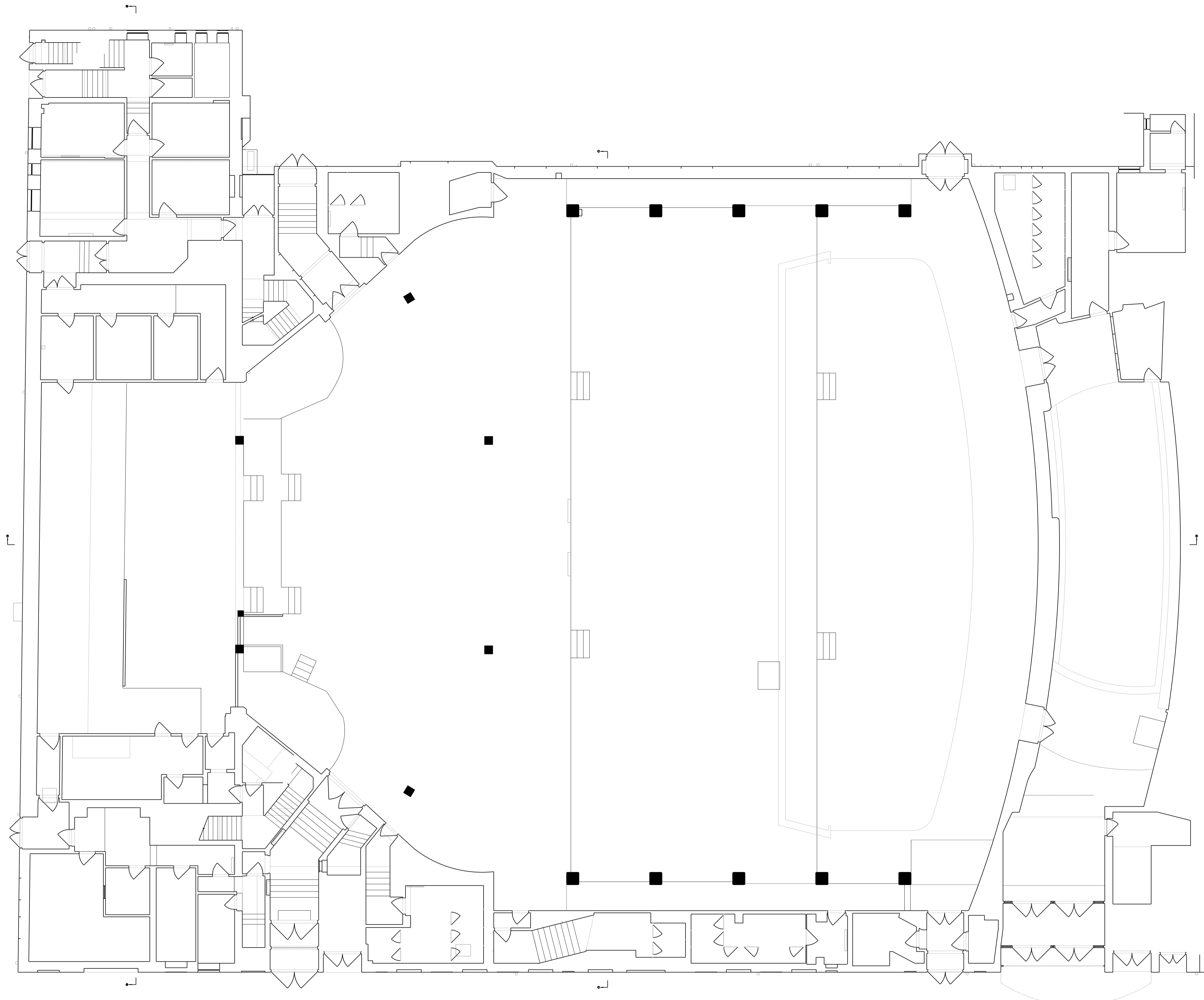


This drawing is the copyright of Roberts Limbrick Ltd and should not be reproduced in whole or in part or used in any manner whatsoever without their written permission.  
 Do Not scale off this drawing, use only figured dimensions and report any discrepancies or omissions to the architect immediately.



0m 5m 10m 20m

**Roberts Limbrick**  
ARCHITECTS

**project**  
 180 ARLINGTON ROAD  
 CAMDEN TOWN  
 LONDON  
 NW1 7HL

**client**  
 THE RANK GROUP GAMING

**drawing**  
 EXISTING GROUND FLOOR  
 PLAN

**status**  
 PLANNING

**ROBERTS LIMBRICK LTD**  
 The Carriage Building, Bruton Way,  
 Gloucester, GL1 1DG   
 The Estates Office, 25 - 26 Gold Tops,  
 Newport, NP20 4PG   
 T. 03333 405 500  
 mail@robertslimbrick.com  
 www.robertslimbrick.com

Registered Office - England No. 06658029

**scale** 1/100 @ A1  
**date** 19/04/17 **author** DNEJ

**project** drg no. **rev.**  
 8571 PL002