

1 The Contractor must check and confirm all dimensions

2 All discrepancies must be reported and resolved by the architect before works commence

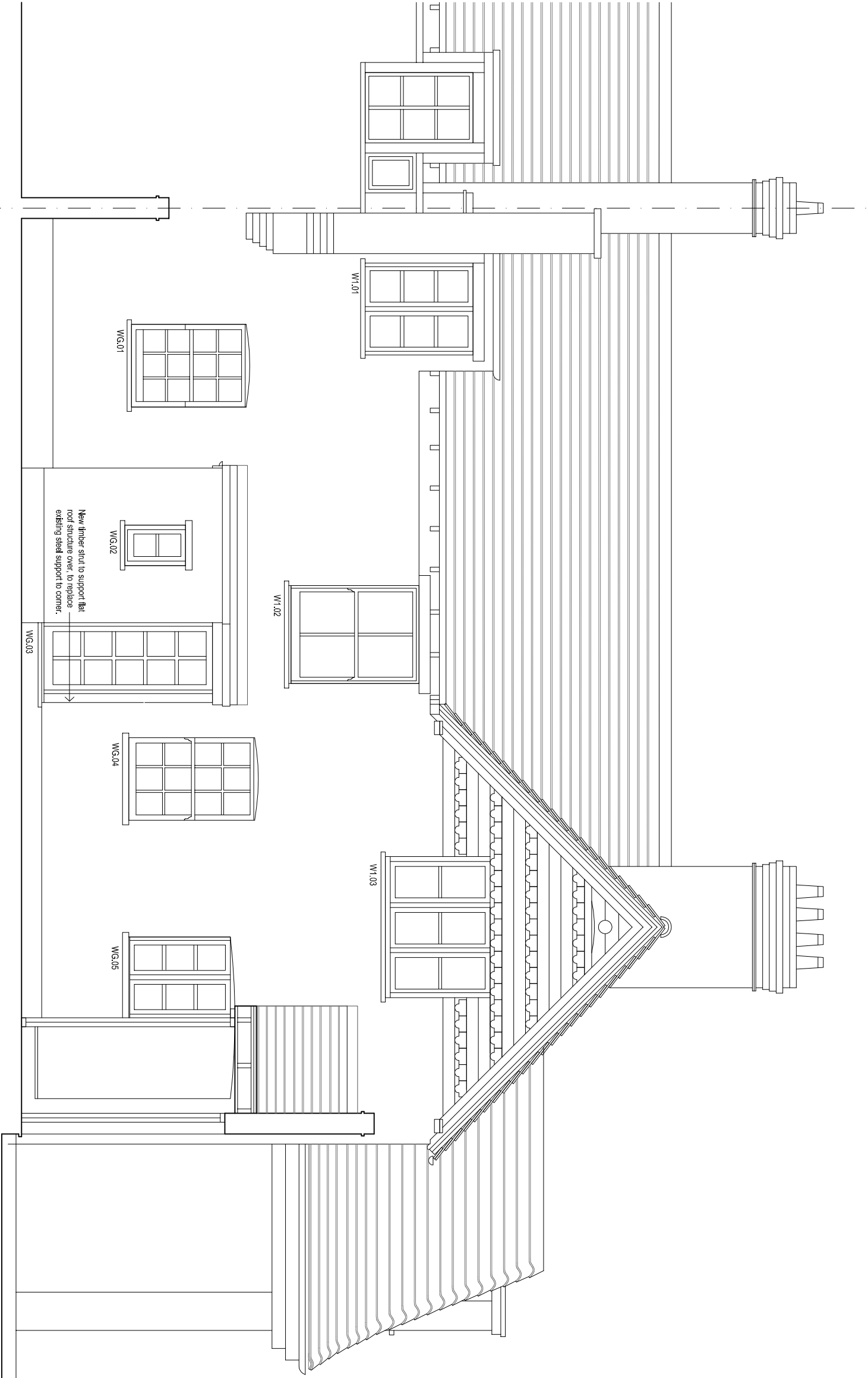
3 This drawing is not to be scaled

4 All work and materials to be in accordance with current applicable Statutory Legislation, Codes of Practice, British Standards and EU Regulations

5 Drawings show design intent only. It is the Contractor's responsibility to ensure that the construction is sound and fit for use, in accordance with the Client's requirements.

Revisions.

A. Proposed windows to be single glazed. WG.03 altered. 17/04/17



Lavender Cottage  
not surveyed

Proposed South East facing Elevation - Vivary Cottage

New high performance felt roof finish to rear flat roofed extension with furrings altered to ensure adequate fall.  
New clear single glazed timber windows to WG.05 and W1.01 to match detail of existing timber window W1.06 but with reveal to accommodate 4mm clear, single glazing. WG.02, WG.03 and W1.03 to match details as above but to be obscure glazed with Pilkington Arctic or equal approved. See details D01 and D02.  
WG.03 requires new timber strut to support roof timbers to replace existing steel strut at corner.