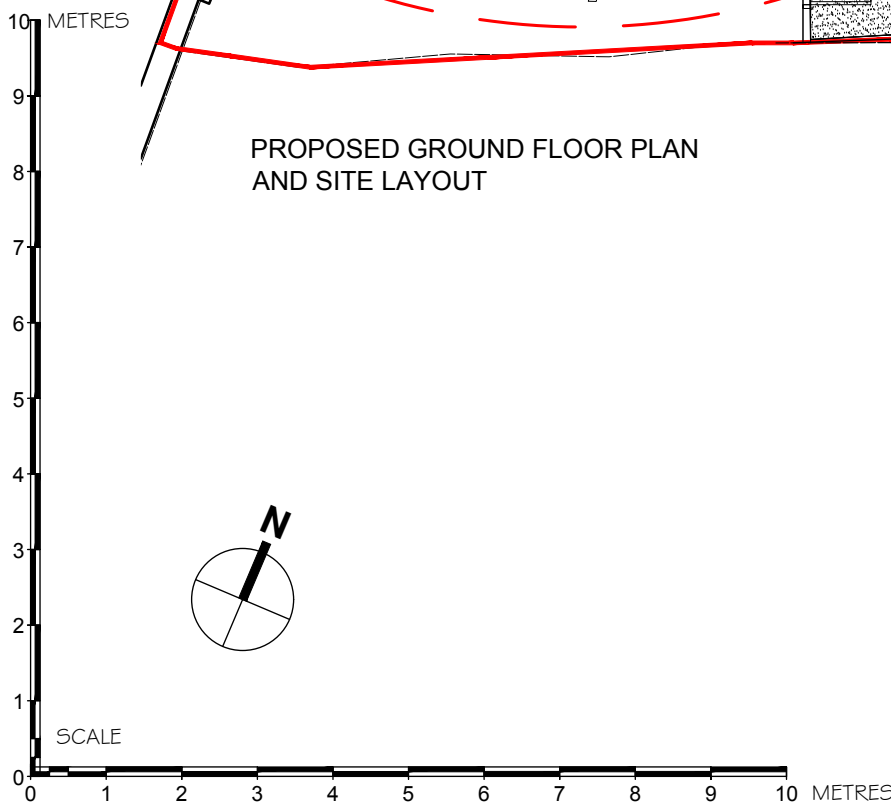


PROPOSED GROUND FLOOR PLAN AND SITE LAYOUT

FOR PLANNING

| * | mm/dd/yy | Description | Description | By |



BB PARTNERSHIP LTD
 CHARTERED ARCHITECTS
 Studios 33-34, 10 Hornsey St, London. N7 8EL
 Tel 020 7336 8555 - e-mail - architect@bbpartnership.co.uk

project
 76 Fitzjohn's Avenue
 London, NW3 5LS
 drawing
 Proposed
 Ground Floor Plan & Site Layout

date	NOV 16	scale	1:100 @ A3	drawn	MCF
drwg. no	FPY_202	rev.	E		

© 2016 BB PARTNERSHIP LIMITED

ALL RIGHTS RESERVED