

Appendix 3: Historic Mapping

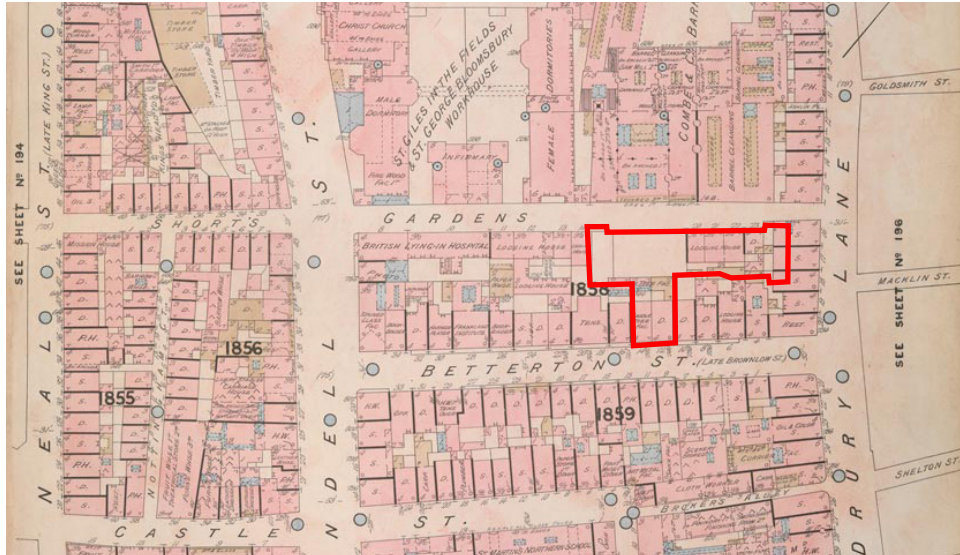


Figure 5: Goad's Insurance Map, 1888 (British Library)

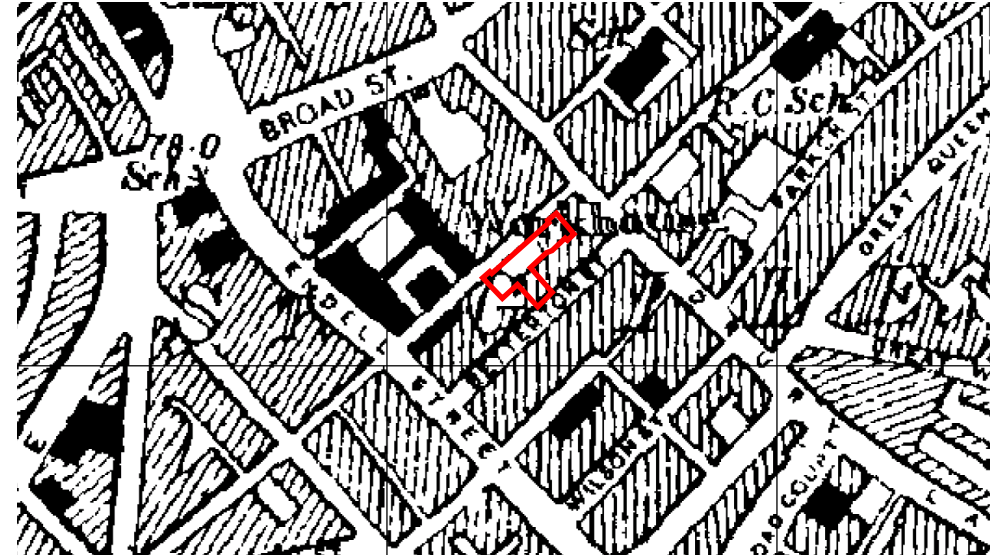


Figure 6: OS Map of 1896, 1:10,560

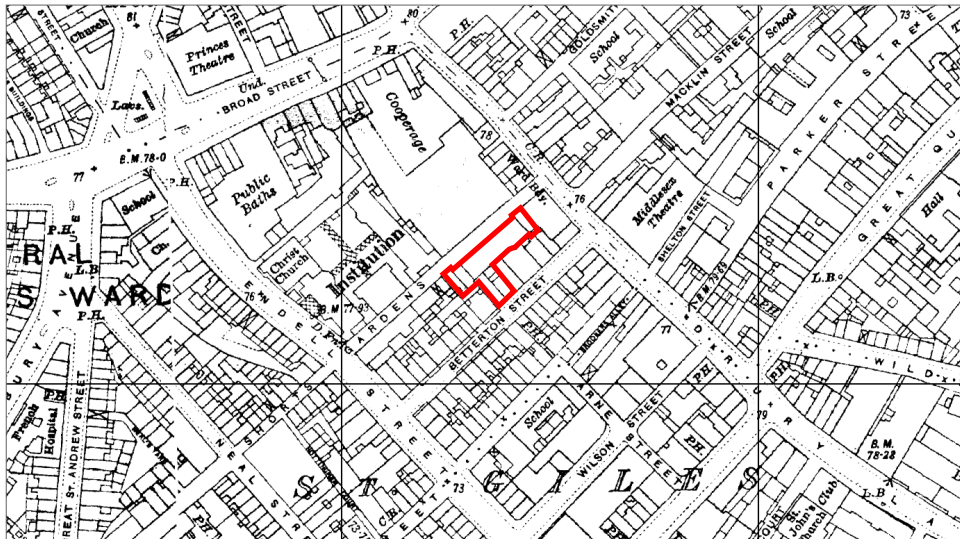


Figure 7: OS Map of 1916, 1:2,500

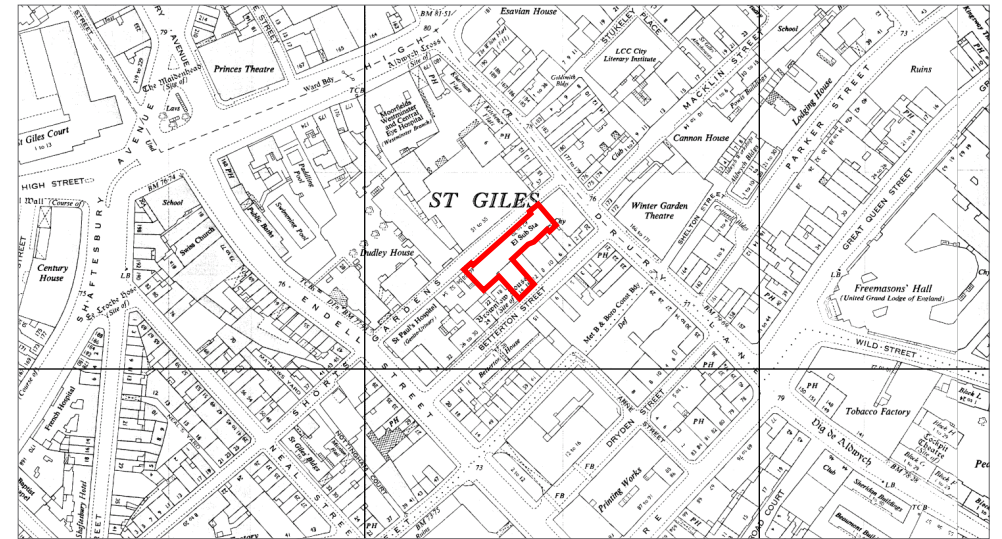



Figure 8: OS Map of 1952-1953, 1:2,500

Appendix 4: Camden Local Archive Material

Figure A5.1: Drainage Application, 14 Betterton Street (1902)

 1361
METROPOLIS MANAGEMENT ACTS.
HOUSE DRAINS.

To the Council of the Metropolitan Borough of Holborn.

Offices:—No. 197, HIGH HOLBORN, W.C.

I, *W. Tipton*
of *33 Endell St.*

hereby give notice that being desirous of having a *six* inch stoneware pipe drain
made at the premises situate and being No. *14 Betterton St. W.C.*

to communicate with the public sewer in *Betterton St.*

in accordance with the plan submitted herewith, I request the approval of the
Council to the same, and agree to abide by and observe the regulations of the
Council, and the By-Laws made under the Metropolis Management Act 1855 and
the Public Health (London) Act, 1891, in the execution of the said works, and
other works in connection therewith, as may be necessary, and in accordance with
such amendments, alterations and additions as may be ordered by the Borough
Surveyor.

Name *W. Tipton*
Address *33 Endell St.*
Date *May 16 1902*

Figure A5.2: Drainage Application 14 Betterton Street (1902)

