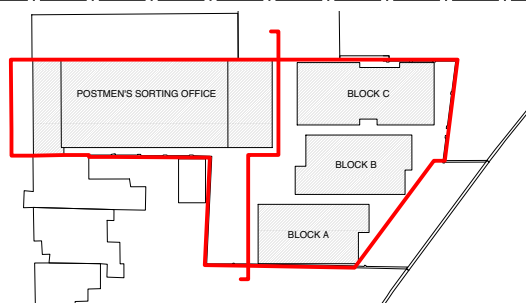
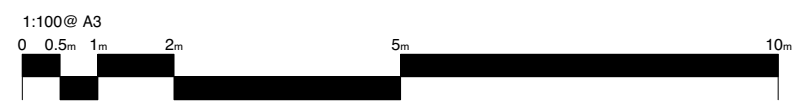
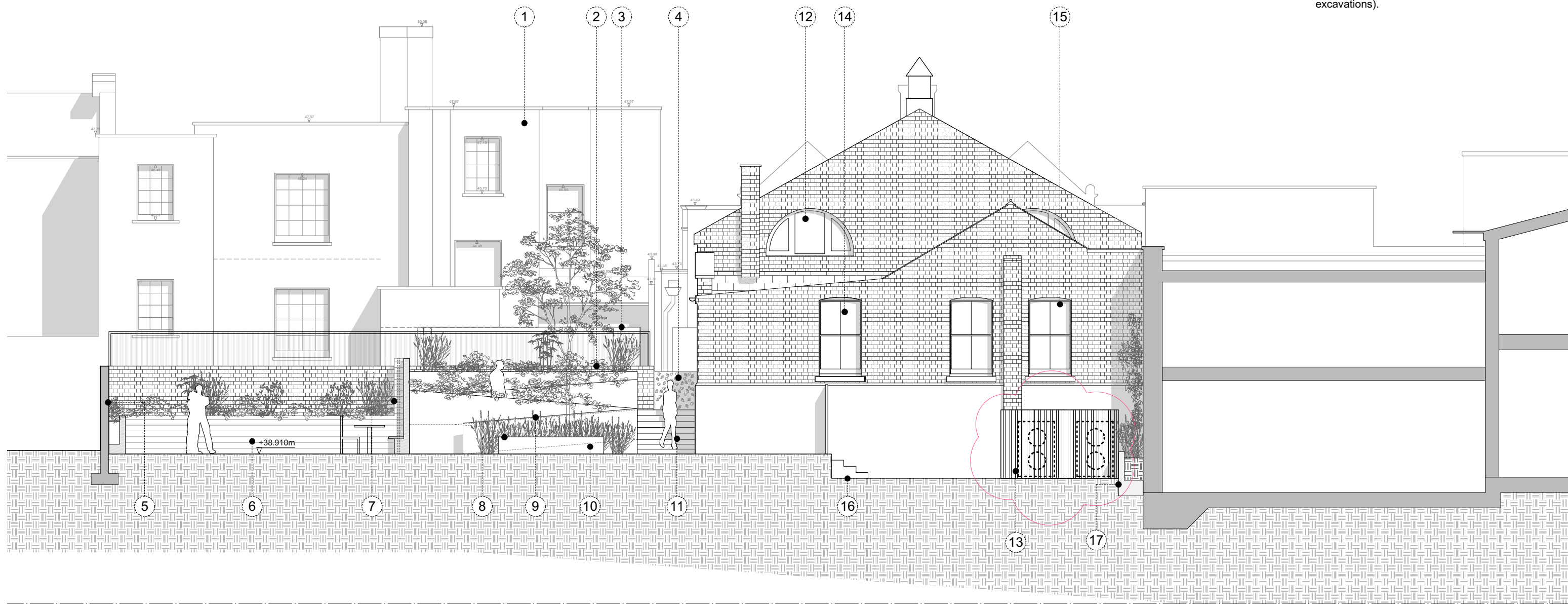
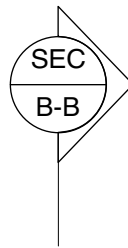
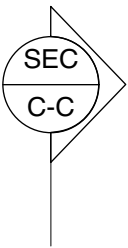
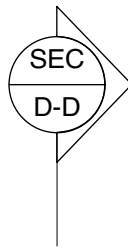


1. Neighboring house, No. 00 Leighton Road.
2. Brick boundary wall.
3. New trellis to replace existing and continue along boundary wall; to height of existing shed in neighboring garden.
4. Perforated metal balustrade.
5. Brick boundary wall.
6. Pigmented concrete planter and retaining wall to match pigment of adjacent block.
7. Garden walls in pigmented concrete and perforated metal panel sections.
8. Feature tree at arrival space.
9. Smooth finish, aggregated concrete planters to proposed ramp.
10. Metal, perforated bench.
11. Steps with granite effect paving.
12. Existing windows repaired.
13. Two external air cooled VRV condensers mounted to rear wall of Postmen's Office concealed behind timber slatted enclosure.
14. Existing external doorway replaced with new timber sash window to match existing timber sash windows.
15. Existing windows retained and repaired.
16. Excavated level for Block C and courtyard space.
17. Pigmented concrete planter to boundary wall (accommodating retaining elements for excavations).



DO NOT SCALE OFF THIS DRAWING ALL AMBIGUITIES OR DISCREPANCIES TO BE REPORTED TO ARCHITECT BEFORE COMMENCING		Revisions		Project	
Notes		Date:	Rev:	30 Leighton Road	
		04/04/17	A	Drawing Title	
		13/04/17	B	Proposed Elevation 3	
		Details:		Scale	
		Issued to Camden following conservation officer's comments.		1:100 @ A3	
		Issued to Camden following conservation officer's comments.		Creation Date	
				April 2015	
		STUDIO MACKERETH		Status	
		ARCHITECTS 78 ST PANCRAS WAY LONDON NW1 0PB		Project No.	
		TELEPHONE +44 (0)20 7042 8335 EMAIL: INFO@STUDIOMACKERETH.COM		Drawing No.	
		Plan		Revision	
		015		153 B	