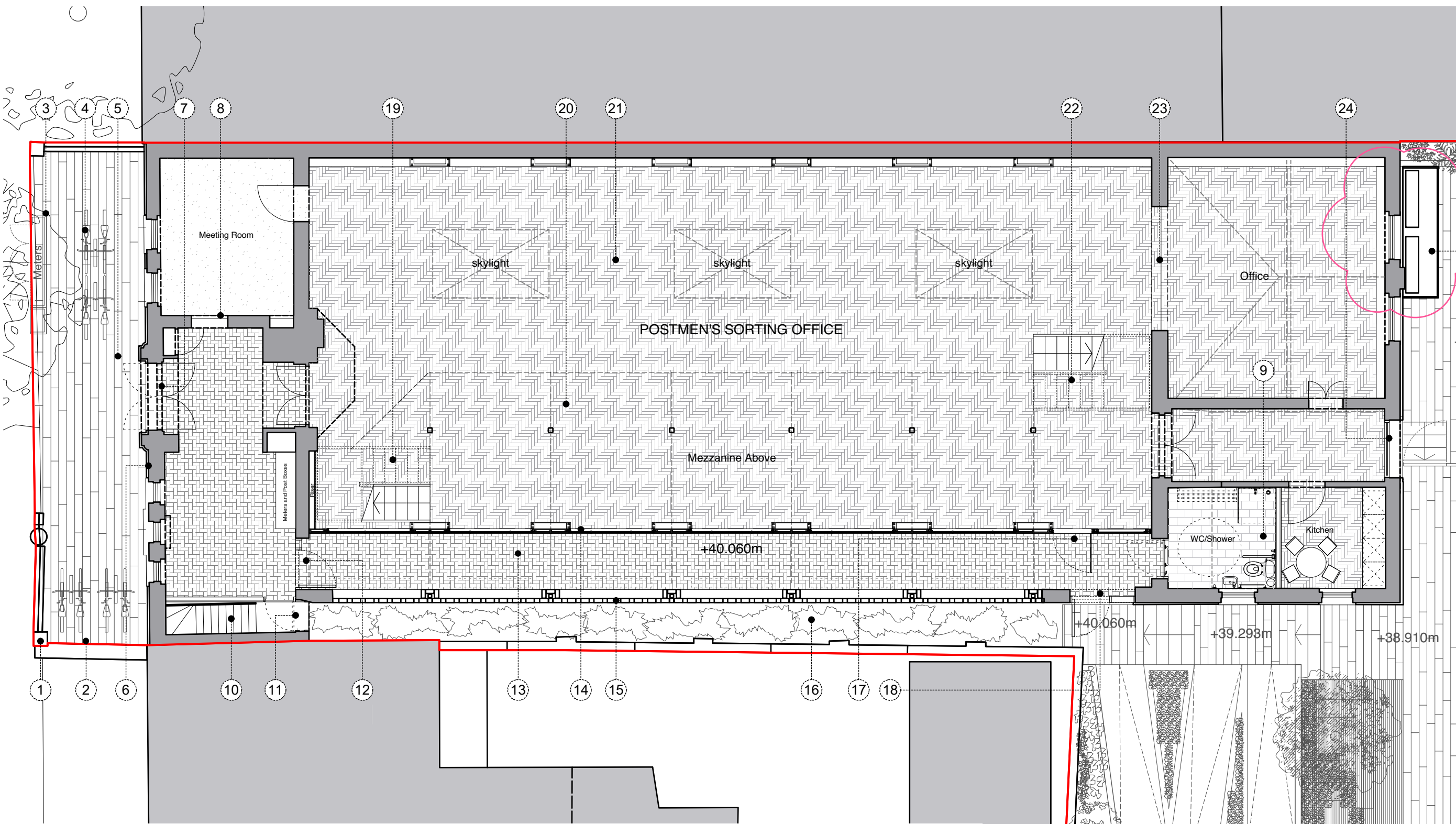
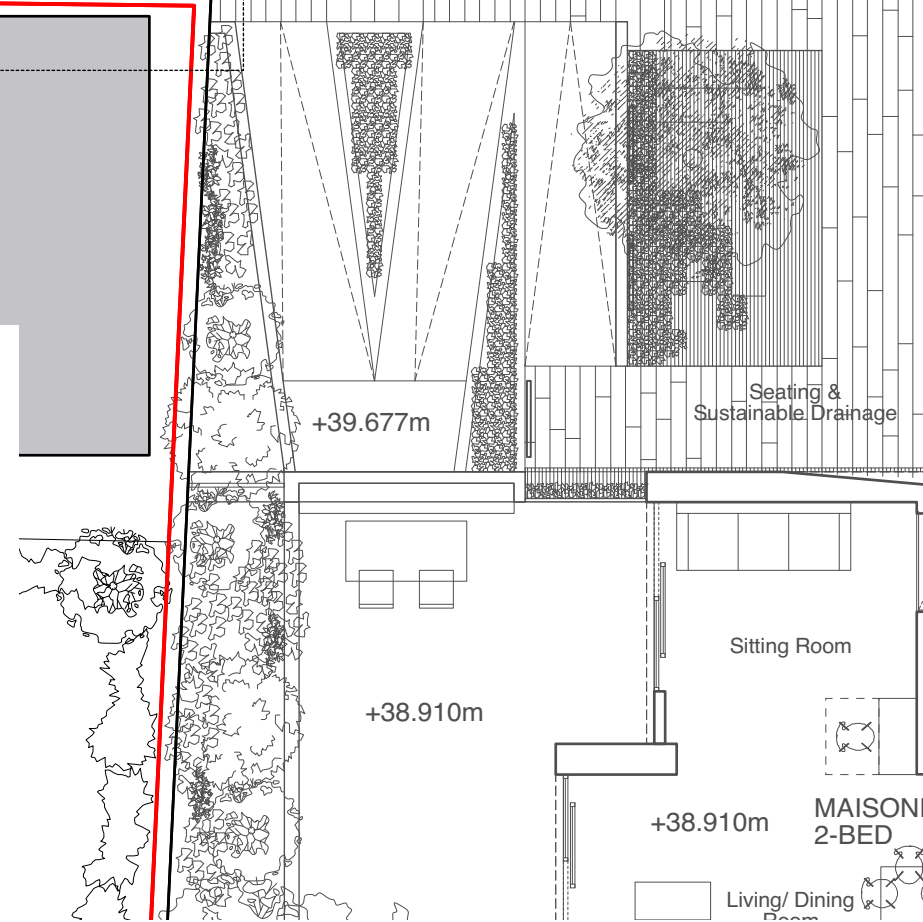


DO NOT SCALE OFF THIS DRAWING
ALL AMBIGUITIES OR DISCREPANCIES
TO BE REPORTED TO ARCHITECT
BEFORE COMMENCING



- 1. Existing railings and red Postbox retained in existing position.
- 2. Long Stay Bike stands for office space: Sheffield type stands in metal to match perforated panels.
- 3. Perforated metal panel enclosure for meters, with bench and backlit building no.
- 4. Short Stay Bike stands for office space: Sheffield type stands in metal to match perforated panels.
- 5. New floor finish to match walkway and external spaces to rear.
- 6. Postmen's Office stone carefully cleaned and brickwork restored.
- 7. Existing doors refurbished, redecorated and adjusted to swing outward.
- 8. Existing door retained.
- 9. New accessible WC/Shower installed.
- 10. Existing stairs to basement refurbished and refinished.
- 11. Existing fire door replaced.
- 12. New opening made in brick wall to proposed internal walkway and new secure door installed.
- 13. Floor finish in walkway in 'staffordshire blue' brick slips laid in herringbone pattern on existing substrate.
- 14. New glazed curtain walling system to commercial unit in-between solid wall sections with black painted aluminium frames with double glazed units. Solid enclosures to house VRV heating / cooling fan coil units.
- 15. Brick filigree introduced below existing cill level.
- 16. Low planting to external space between sorting office and boundary wall.
- 17. Fire rate, glazed escape doors in glazing system.
- 18. Opening in brickwork to provide access to rear area and walkway with secure door.
- 19. Proposed stair to new mezzanine.
- 20. New mezzanine above, with columns installed to match existing grid in line with existing window openings and curtain walling framing.
- 21. Existing pine parquet flooring in herringbone pattern re-laid throughout sorting office commercial spaces.
- 22. Proposed stair to new mezzanine.
- 23. Partition removed from existing opening, which is reinstated to provide access to commercial space.
- 24. New full height window installed in opening made from removing existing doors.
- 25. Two external air cooled VRV condensers mounted to rear wall of Postmen's Office concealed behind timber slatted enclosure.



Notes

Revisions	
Date:	Rev: Details:
14/12/15	A Mezzanine and stairs updated further to conservation officer's comments.
xx/xx/16	B Updated for new listed building application.
27/02/17	C Issued as draft for conservation officer's comments.
04/04/17	D Issued to Camden following conservation officer's comments.
13/04/17	E Issued to Camden following conservation officer's comments.

STUDIO MACKERETH
ARCHITECTS
7B ST PANCRAS WAY
LONDON
NW1 0PB

TELEPHONE + 4 4 (0)20 7042 8335
EMAIL: INFO@STUDIOMACKERETH.COM

Project
30 Leighton Road

Drawing Title
Proposed Post Office Plans - GF

Scale	Creation Date	Status
1:100 @ A3	April 2015	Plan

Project No.	Drawing No.	Revision
015	131	E