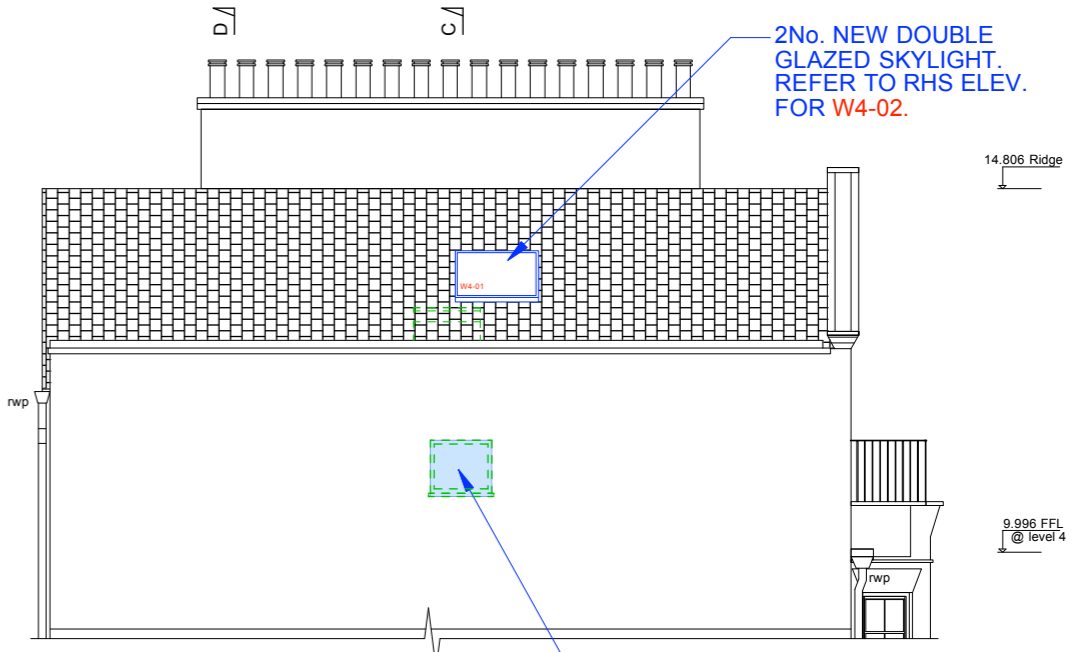




JULIETTE BALCONY @ 1100mm ABOVE FFL. NEW DOUBLE GLAZED INWARD OPENING DOUBLE DOORS, 300mm ABOVE FFL. EXISTING OPENING / CILL TO BE LOWERED.

- 14.806 Ridge
- 13.068 Window HH @ level 4
- 9.996 FFL @ level 4
- 10.716 Window CH @ level 4
- 9.478 Window HH @ level 3
- 7.448 Window CH @ level 3
- 6.673 FFL @ level 3
- 6.061 Door HH @ level 2
- 5.733 Window HH @ level 2
- 3.993 Window CH @ level 2
- 3.463 Door CH @ level 2
- 3.393 FFL @ level 2

BALCONY COPING, RAIL & WEATHERING RENOVATED



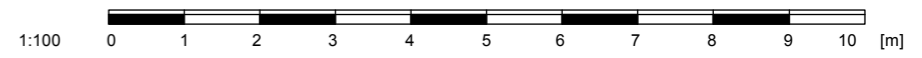
LHS ELEVATION

BRICK UP EXISTING OPENING IN BONDED MASONRY TO MATCH THE EXISTING SUBJECT TO SOUTH HAMPSTEAD CONSERVATION AREAS PERMISSION.

No. 63 Assumed boundary No. 61 Assumed boundary No. 59

ALL EXISTING WINDOWS REPLACED WITH DOUBLE GLAZED UNITS TO ACHIEVE U-VALUE 0.18W/m²K.
 ALL WINDOW DETAILS SUBJECT TO SOUTH HAMPSTEAD CONSERVATION AREAS PERMISSION.

PROPOSED
 EXISTING
 TO REMOVE



PROPOSED REAR & LHS ELEVATION

PLANNING

REV.	DATE	DESCRIPTION	REV.	DATE	DESCRIPTION	REV.	DATE	DESCRIPTION	NOTE:	CLIENT:	PROJECT:	Simon Miller Architects Ltd 1033 B Finchley Road Temple Fortune London NW11 7ES Tel: 020 8201 9875 Web: simonmillerarchitects.com Email: simon@simonmillerarchitects.com	DATE:	REVISION:
A_12.04.2017		SMALL AMENDMENT TO JULIETTE BALCONY FOLLOWING ADVICE FROM PLANNING OFFICER.							ALL DIMENSIONS ARE IN MILLIMETERS. INCONSISTENCIES ARE TO BE REPORTED TO THE ARCHITECT IMMEDIATELY.	ANDREW AND KATE WETTERN	INTERNAL REFURBISHMENT & NEW RELOCATED STAIR		DATE: JANUARY 2017	
									COPYRIGHT IS HELD BY SIMON MILLER ARCHITECTS LTD				DRAWN BY: OR	
													SCALE: 1:100 @ A3	
													DRAWING NO.: 422 PL07	REVISION: A