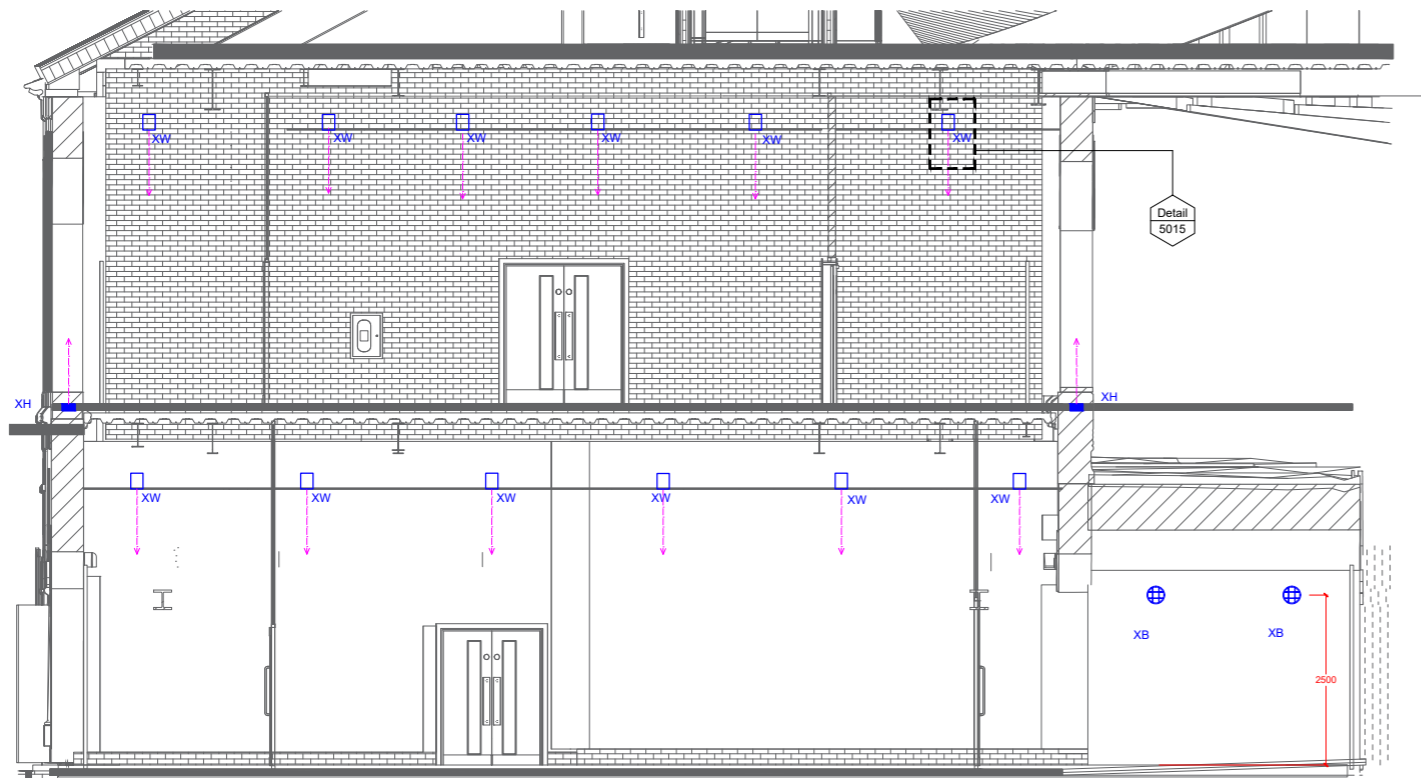


02 Core 3 - Section Looking North  
Scale 1:50 @ A1



01 Core 3 - Section Looking South  
Scale 1:50 @ A1

- Type XB:**  
Exterior quality dimmable LED glowing luminaire to provide general lighting and illuminate facade.  
Refer to Speirs + Major's Lighting Equipment Specification KXC-M0-001-S+M10793-J-63-850 for details.
- Type XH:**  
Exterior quality inground LED light to provide soft light to heritage arch reveals. Refer to Speirs + Major's Lighting Equipment Specification KXC-M0-001-S+M10793-J-63-850 for details.
- Type XR:**  
Exterior quality dimmable LED ceiling mounted luminaire to provide general lighting on top stairs.  
Refer to Speirs + Major's Lighting Equipment Specification KXC-M0-001-S+M10793-J-63-850 for details.
- Type XW:**  
Exterior quality surface mounted luminaire to provide general lighting.  
Refer to Speirs + Major's Lighting Equipment Specification KXC-M0-001-S+M10793-J-63-850 for details.
- Type XX:**  
Interior quality track mounted LED spotlights to provide display lighting below stair landing on Yard level.  
Refer to Speirs + Major's Lighting Equipment Specification KXC-M0-001-S+M10793-J-63-850 for details.
- Type BF:**  
Interior quality surface mounted LED square luminaire to provide general lighting to stairs.  
Refer to Speirs + Major's Lighting Equipment Specification KXC-M0-001-S+M10793-J-63-850 for details.

**Notes:**

Do not scale off this drawing.

All drawings to be read in conjunction with all other relevant documents, including drawings and specifications.

All works to be carried out in accordance with such Standards, Building and IEE regulations, mandatory and statutory regulations and codes of practice as are deemed to apply in the relevant country or state.

Refer to Speirs+Major Lighting Designer's Risk Assessment for associated risks under the construction (Design and Management) Regulations (where applicable).

**Symbol Notes (where used):**

Symbols indicate positions of luminaires and other equipment.

The alphanumeric reference beside each symbol refers to luminaire type - see relevant Speirs+Major Lighting Equipment Specification.

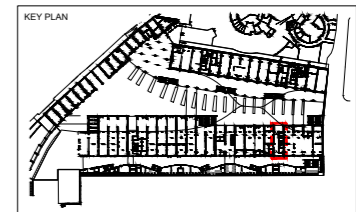
The numeric code beside each symbol refers to a logical control channel reference (NOT the same as a physical wiring circuit). For details of logical channels see relevant Speirs+Major Control Channel Schedule. For details of wiring circuits, etc, see relevant engineers' drawings.

**Copyright:**

© Speirs and Major Associates, date as below. Under UK law, all rights described in Chapter 4 of the Copyrights Designs and Patents Act 1988 have been generally asserted.

**IMPORTANT:**

**THIS DRAWING IS NOT TO BE ISSUED FOR TENDER OR CONSTRUCTION. IF THIS DRAWING IS ISSUED TO CONTRACTORS, IT IS FOR INFORMATION ONLY - ARCHITECTS' AND ENGINEERS' DRAWINGS MUST BE USED AS THE BASIS FOR TENDER AND CONSTRUCTION.**



01	29/02/16	TJ	Stage 3 update
00	07/10/15	TJ	Stage 3 issue

Rev.	Date	By	Notes
------	------	----	-------

**Project:**  
Coal Drops Yard, King's Cross  
London, UK

**Drawing:**  
Core 3  
Sections

**Drawing Number:** KXC-M0-001-S+M10793-J-63-5008 **Rev.** 01

**Scale:** 1:50 **ISO:** A1

**SPEIRS + MAJOR**  
 London: Tel +44 (0)20 7067 4700 Fax +44 (0)20 7067 4701  
 Edinburgh: Tel +44 (0)131 226 4474 Fax +44 (0)131 220 5331  
[www.speirsandmajor.com](http://www.speirsandmajor.com)

**NOTE:**  
ALL WIRING, CONDUITS, CONTAINMENT ROUTES ETC. TO ELECTRICAL ENGINEER'S DRAWINGS, DETAILS AND SPECIFICATION.  
ALL ASSOCIATED FIXINGS, MOUNTING AND BRACKETRY TO ARCHITECT'S DRAWINGS, DETAILS AND SPECIFICATION.  
REFER TO ARCHITECT'S CONSTRUCTION DRAWINGS FOR FINAL SETTING OUT OF LIGHTING EQUIPMENT.

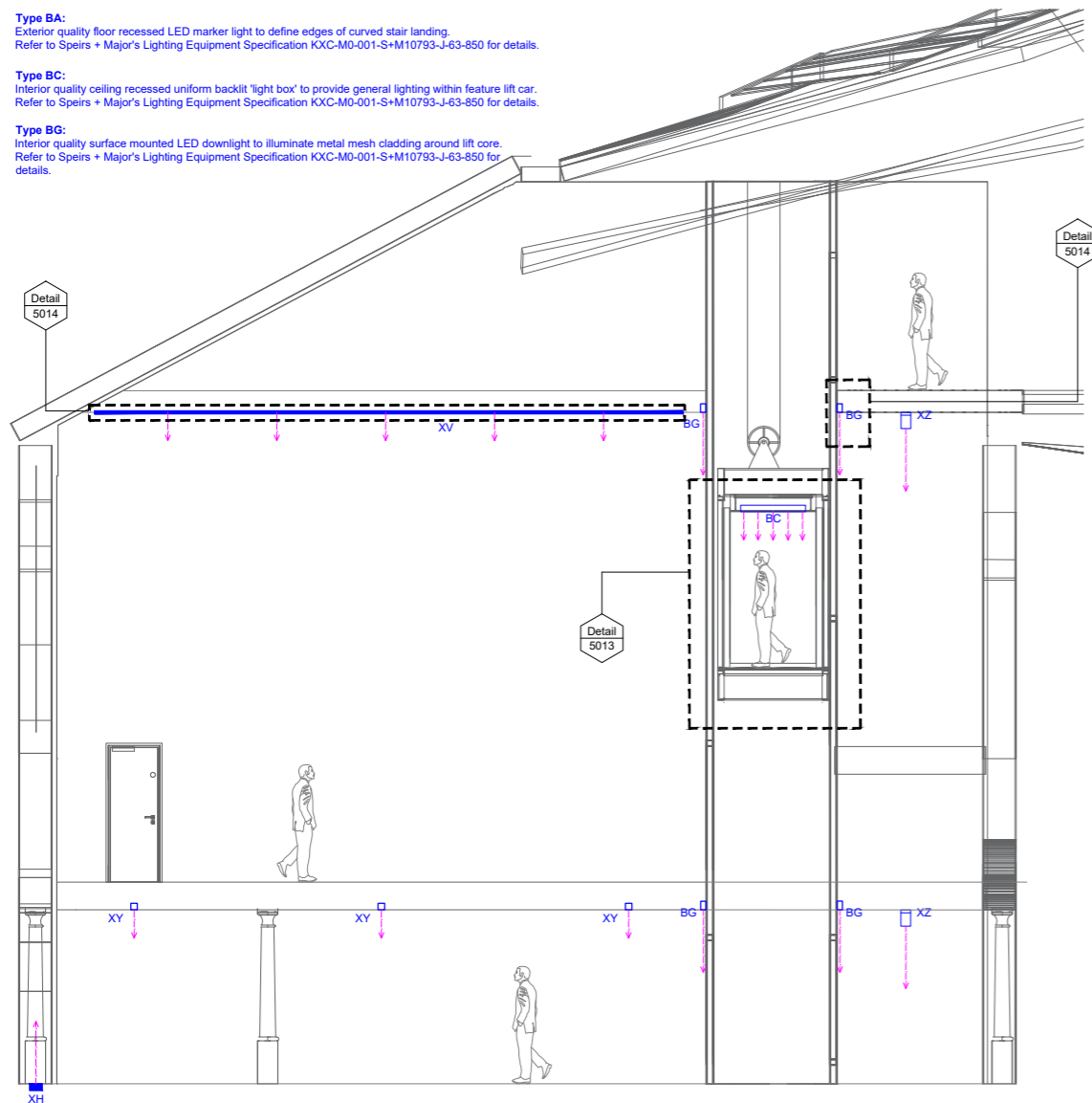
**Type XY:**  
Exterior quality recessed LED ceiling recessed luminaire to provide general lighting.  
Refer to Speirs + Major's Lighting Equipment Specification KXC-M0-001-S+M10793-J-63-850 for details.

**Type XZ:**  
Exterior quality dimmable LED ceiling mounted luminaire to provide general lighting.  
Refer to Speirs + Major's Lighting Equipment Specification KXC-M0-001-S+M10793-J-63-850 for details.

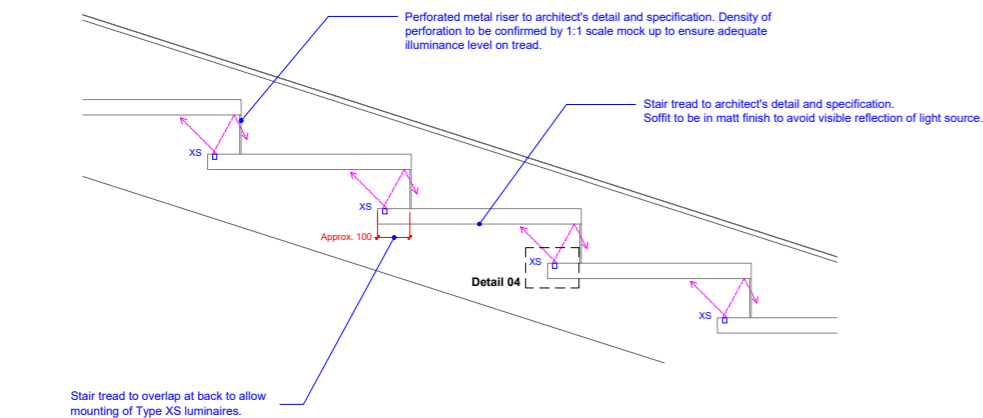
**Type BA:**  
Exterior quality floor recessed LED marker light to define edges of curved stair landing.  
Refer to Speirs + Major's Lighting Equipment Specification KXC-M0-001-S+M10793-J-63-850 for details.

**Type BC:**  
Interior quality ceiling recessed uniform backlit 'light box' to provide general lighting within feature lift car.  
Refer to Speirs + Major's Lighting Equipment Specification KXC-M0-001-S+M10793-J-63-850 for details.

**Type BG:**  
Interior quality surface mounted LED downlight to illuminate metal mesh cladding around lift core.  
Refer to Speirs + Major's Lighting Equipment Specification KXC-M0-001-S+M10793-J-63-850 for details.



01 Core 4 - Section Looking South  
Scale 1:100@ A1



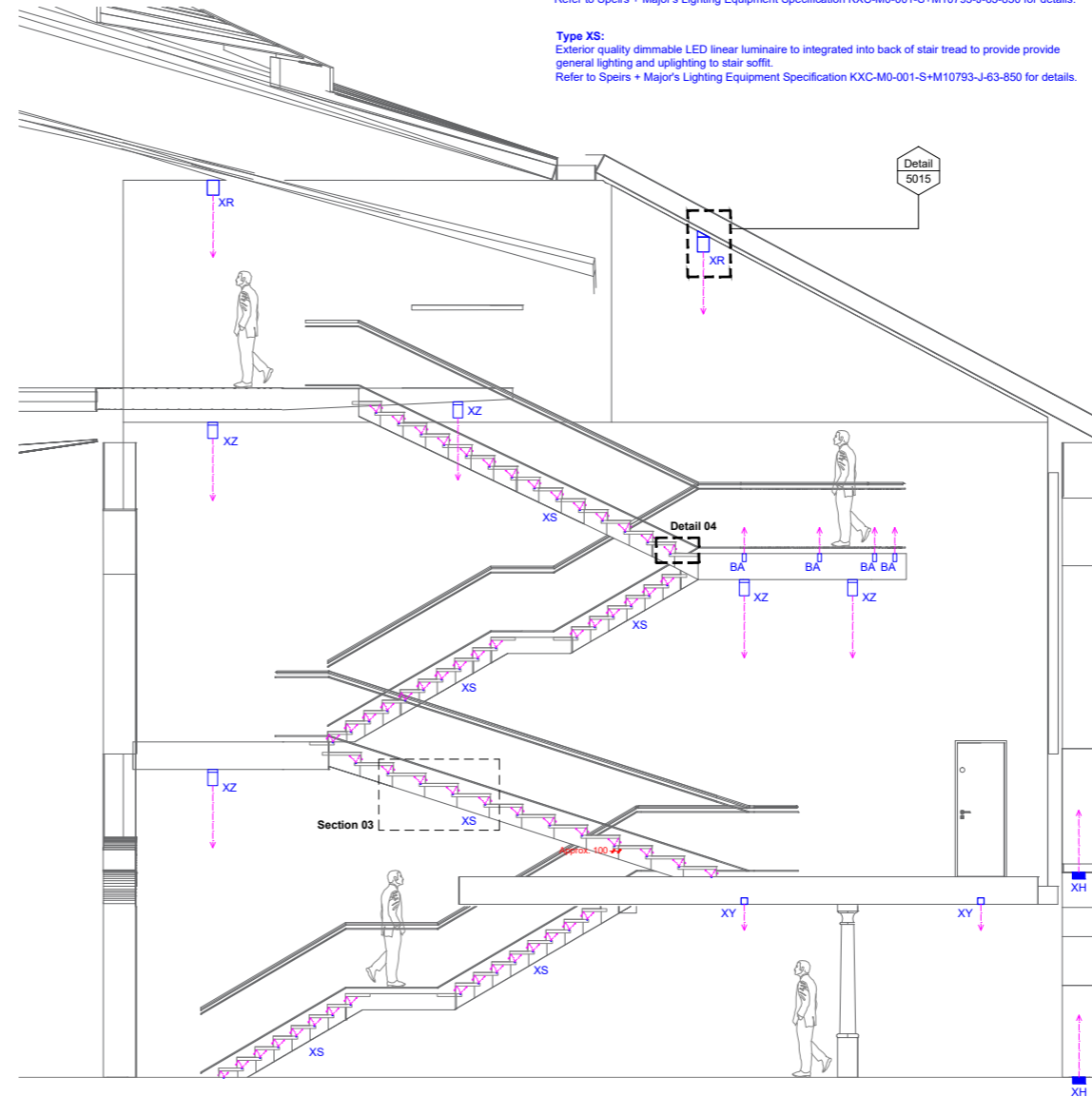
03 Type XS - Typical Section  
Scale 1:10@ A1

NOTE:  
ALL WIRING, CONDUITS, CONTAINMENT ROUTES ETC. TO ELECTRICAL ENGINEER'S DRAWINGS, DETAILS AND SPECIFICATION.  
ALL ASSOCIATED FIXINGS, MOUNTING AND BRACKETRY TO ARCHITECT'S DRAWINGS, DETAILS AND SPECIFICATION.  
REFER TO ARCHITECT'S CONSTRUCTION DRAWINGS FOR FINAL SETTING OUT OF LIGHTING EQUIPMENT.

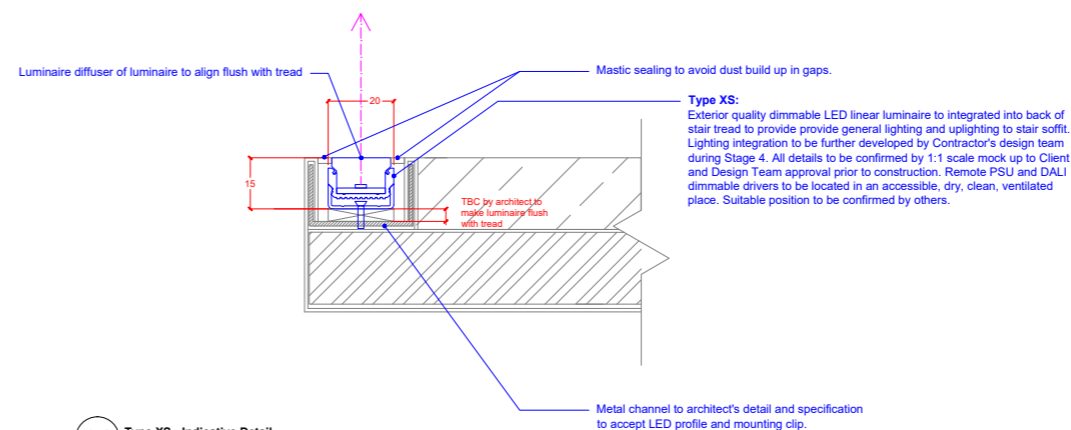
**Type XH:**  
Exterior quality inground LED uplight to provide soft light to heritage arch reveals. Refer to Speirs + Major's Lighting Equipment Specification KXC-M0-001-S+M10793-J-63-850 for details.

**Type XR:**  
Exterior quality dimmable LED ceiling mounted luminaire to provide general lighting on top stairs.  
Refer to Speirs + Major's Lighting Equipment Specification KXC-M0-001-S+M10793-J-63-850 for details.

**Type XS:**  
Exterior quality dimmable LED linear luminaire to be integrated into back of stair tread to provide general lighting and uplighting to stair soffit.  
Refer to Speirs + Major's Lighting Equipment Specification KXC-M0-001-S+M10793-J-63-850 for details.



02 Core 4 - Section Looking North  
Scale 1:100@ A1



04 Type XS - Indicative Detail  
Scale 1:1@ A1

**Notes:**

Do not scale off this drawing.

All drawings to be read in conjunction with all other relevant documents, including drawings and specifications.

All works to be carried out in accordance with such Standards, Building and IEE regulations, mandatory and statutory regulations and codes of practice as are deemed to apply in the relevant country or state.

Refer to Speirs+Major Lighting Designer's Risk Assessment for associated risks under the construction (Design and Management) Regulations (where applicable).

**Symbol Notes (where used):**

Symbols indicate positions of luminaires and other equipment.

The alphanumeric reference beside each symbol refers to luminaire type - see relevant Speirs+Major Lighting Equipment Specification.

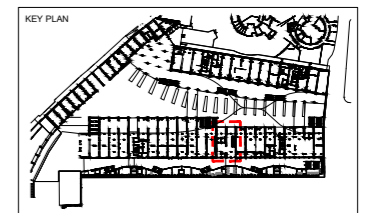
The numeric code beside each symbol refers to a logical control channel reference (NOT the same as a physical wiring circuit). For details of logical channels see relevant Speirs+Major Control Channel Schedule. For details of wiring circuits, etc, see relevant engineers' drawings.

**Copyright:**

© Speirs and Major Associates, date as below. Under UK law, all rights described in Chapter 4 of the Copyrights Designs and Patents Act 1988 have been generally asserted.

**IMPORTANT:**

**THIS DRAWING IS NOT TO BE ISSUED FOR TENDER OR CONSTRUCTION. IF THIS DRAWING IS ISSUED TO CONTRACTORS, IT IS FOR INFORMATION ONLY. ARCHITECTS' AND ENGINEERS' DRAWINGS MUST BE USED AS THE BASIS FOR TENDER AND CONSTRUCTION.**



01	29/02/16	TJ	Stage 3 update
00	07/10/15	TJ	Stage 3 issue

Rev.	Date	By	Notes
------	------	----	-------

**Project:**  
Coal Drops Yard, King's Cross  
London, UK

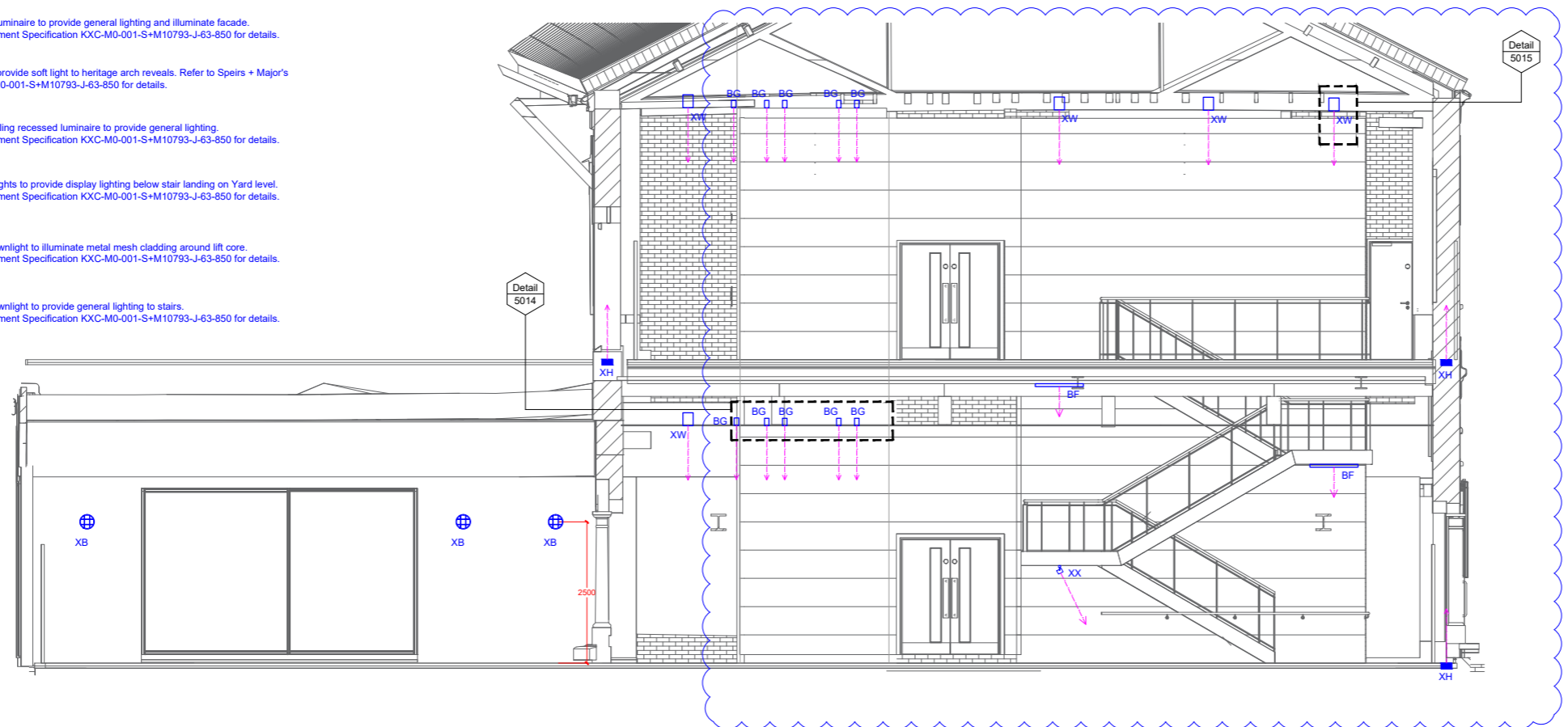
**Drawing:**  
Core 4  
Sections

<b>Drawing Number:</b> KXC-M2-001-S+M10793-J-63-5009	<b>Rev.</b> 01
---	-------------------

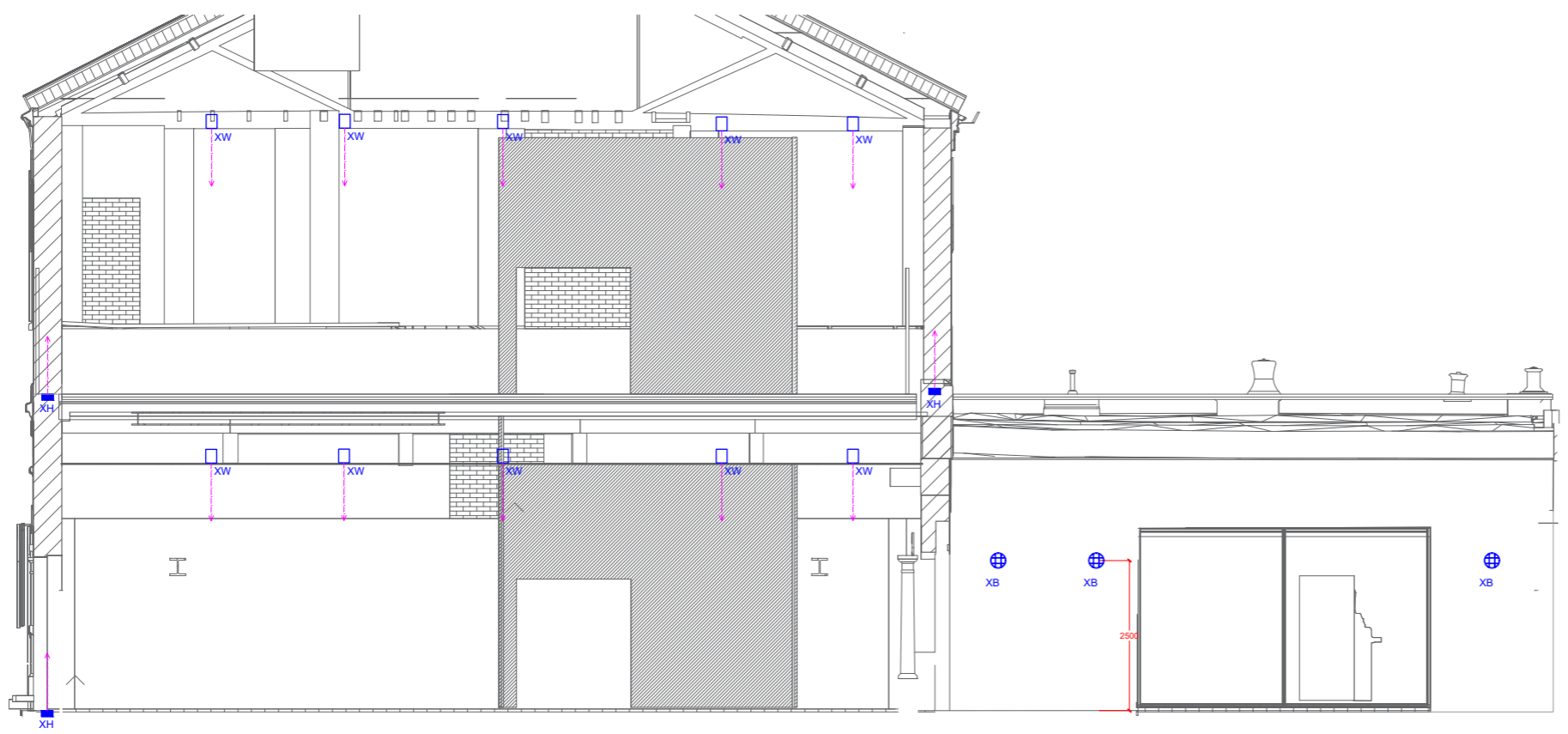
**Scale:** As shown ISO: A1



- Type XB:**  
Exterior quality dimmable LED glowing luminaire to provide general lighting and illuminate facade.  
Refer to Speirs + Major's Lighting Equipment Specification KXC-M0-001-S+M10793-J-63-850 for details.
- Type XH:**  
Exterior quality inground LED uplight to provide soft light to heritage arch reveals. Refer to Speirs + Major's Lighting Equipment Specification KXC-M0-001-S+M10793-J-63-850 for details.
- Type XW:**  
Exterior quality ceiling recessed LED ceiling recessed luminaire to provide general lighting.  
Refer to Speirs + Major's Lighting Equipment Specification KXC-M0-001-S+M10793-J-63-850 for details.
- Type XX:**  
Interior quality track mounted LED spotlights to provide display lighting below stair landing on Yard level.  
Refer to Speirs + Major's Lighting Equipment Specification KXC-M0-001-S+M10793-J-63-850 for details.
- Type BG:**  
Interior quality surface mounted LED downlight to illuminate metal mesh cladding around lift core.  
Refer to Speirs + Major's Lighting Equipment Specification KXC-M0-001-S+M10793-J-63-850 for details.
- Type BF:**  
Interior quality surface mounted LED downlight to provide general lighting to stairs.  
Refer to Speirs + Major's Lighting Equipment Specification KXC-M0-001-S+M10793-J-63-850 for details.



02 Core 5 - Section Looking North  
Scale 1:50@ A1



01 Core 5 - Section Looking South  
Scale 1:50@ A1

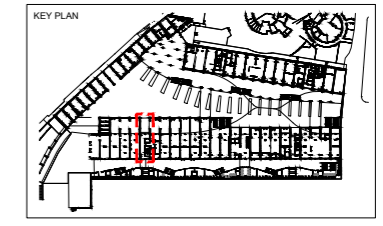
NOTE:  
ALL WIRING, CONDUITS, CONTAINMENT ROUTES ETC. TO ELECTRICAL ENGINEER'S DRAWINGS, DETAILS AND SPECIFICATION.  
ALL ASSOCIATED FIXINGS, MOUNTING AND BRACKETRY TO ARCHITECT'S DRAWINGS, DETAILS AND SPECIFICATION.  
REFER TO ARCHITECT'S CONSTRUCTION DRAWINGS FOR FINAL SETTING OUT OF LIGHTING EQUIPMENT.

**Notes:**  
Do not scale off this drawing.  
All drawings to be read in conjunction with all other relevant documents, including drawings and specifications.  
All works to be carried out in accordance with such Standards, Building and IEE regulations, mandatory and statutory regulations and codes of practice as are deemed to apply in the relevant country or state.  
Refer to Speirs+Major Lighting Designer's Risk Assessment for associated risks under the construction (Design and Management) Regulations (where applicable).

**Symbol Notes (where used):**  
Symbols indicate positions of luminaires and other equipment.  
The alphanumeric reference beside each symbol refers to luminaire type - see relevant Speirs+Major Lighting Equipment Specification.  
The numeric code beside each symbol refers to a logical control channel reference (NOT the same as a physical wiring circuit). For details of logical channels see relevant Speirs+Major Control Channel Schedule. For details of wiring circuits, etc. see relevant engineers' drawings.

**Copyright:**  
© Speirs and Major Associates, date as below. Under UK law, all rights described in Chapter 4 of the Copyrights Designs and Patents Act 1988 have been generally asserted.

**IMPORTANT:**  
THIS DRAWING IS NOT TO BE ISSUED FOR TENDER OR CONSTRUCTION. IF THIS DRAWING IS ISSUED TO CONTRACTORS, IT IS FOR INFORMATION ONLY - ARCHITECTS' AND ENGINEERS' DRAWINGS MUST BE USED AS THE BASIS FOR TENDER AND CONSTRUCTION.



02	31/05/16	JF	Stage 3 update
01	29/02/16	TJ	Stage 3 update
00	07/10/15	TJ	Stage 3 issue

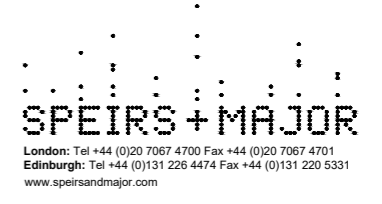
Rev.	Date	By	Notes

**Project:**  
Coal Drops Yard, King's Cross  
London, UK

**Drawing:**  
Core 5  
Sections

**Drawing Number:** KXC-M0-001-S+M10793-J-63-5010  
**Rev.:** 02

**Scale:** 1:50  
**ISO:** A1



**Type BG:**  
Interior quality surface mounted LED downlight to illuminate metal mesh cladding around lift core.  
Refer to Speirs + Major's Lighting Equipment Specification KXC-M0-001-S+M10793-J-63-850 for details.

**Type XB:**  
Exterior quality dimmable LED glowing luminaire to provide general lighting and illuminate facade.  
Refer to Speirs + Major's Lighting Equipment Specification KXC-M0-001-S+M10793-J-63-850 for details.

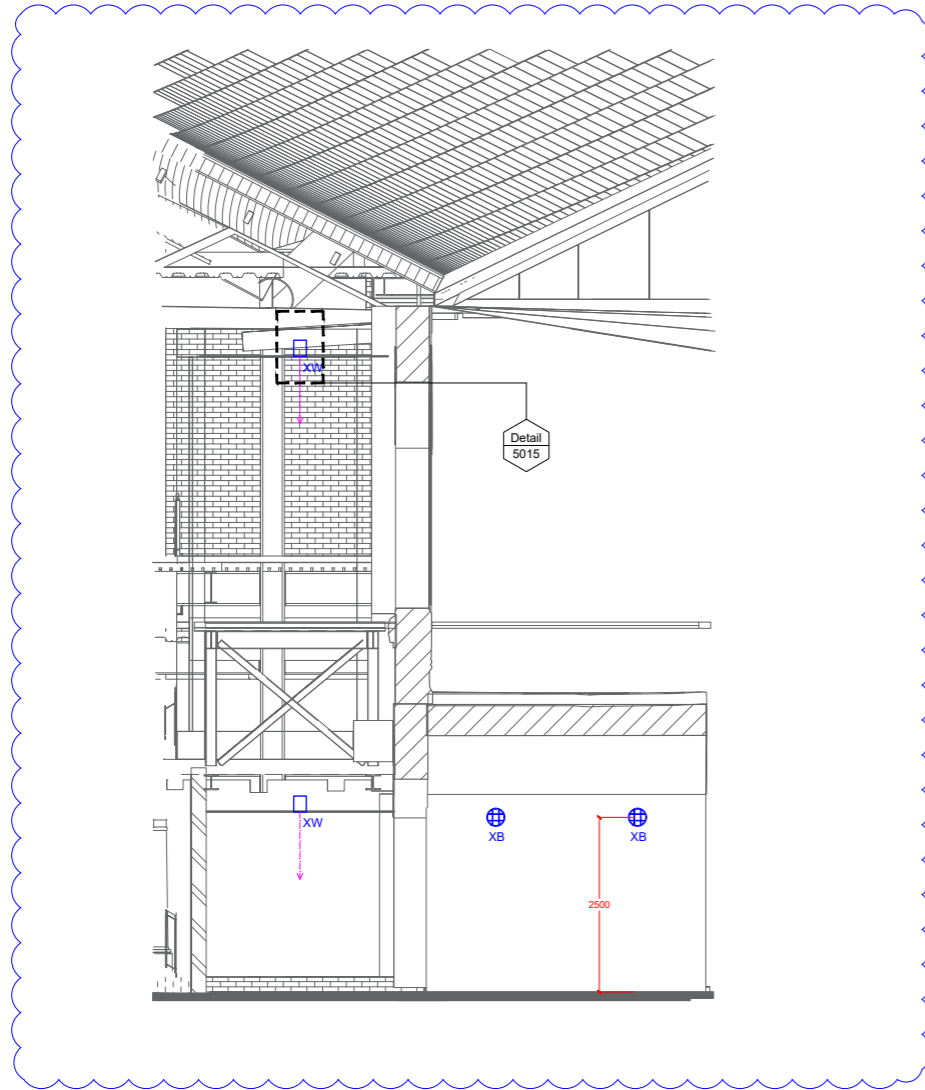
**Type XW:**  
Exterior quality surface mounted LED luminaire to provide general lighting.  
Refer to Speirs + Major's Lighting Equipment Specification KXC-M0-001-S+M10793-J-63-850 for details.

**Notes:**  
Do not scale off this drawing.  
All drawings to be read in conjunction with all other relevant documents, including drawings and specifications.  
All works to be carried out in accordance with such Standards, Building and IEE regulations, mandatory and statutory regulations and codes of practice as are deemed to apply in the relevant country or state.  
Refer to *Speirs+Major Lighting Designer's Risk Assessment* for associated risks under the construction (Design and Management) Regulations (where applicable).

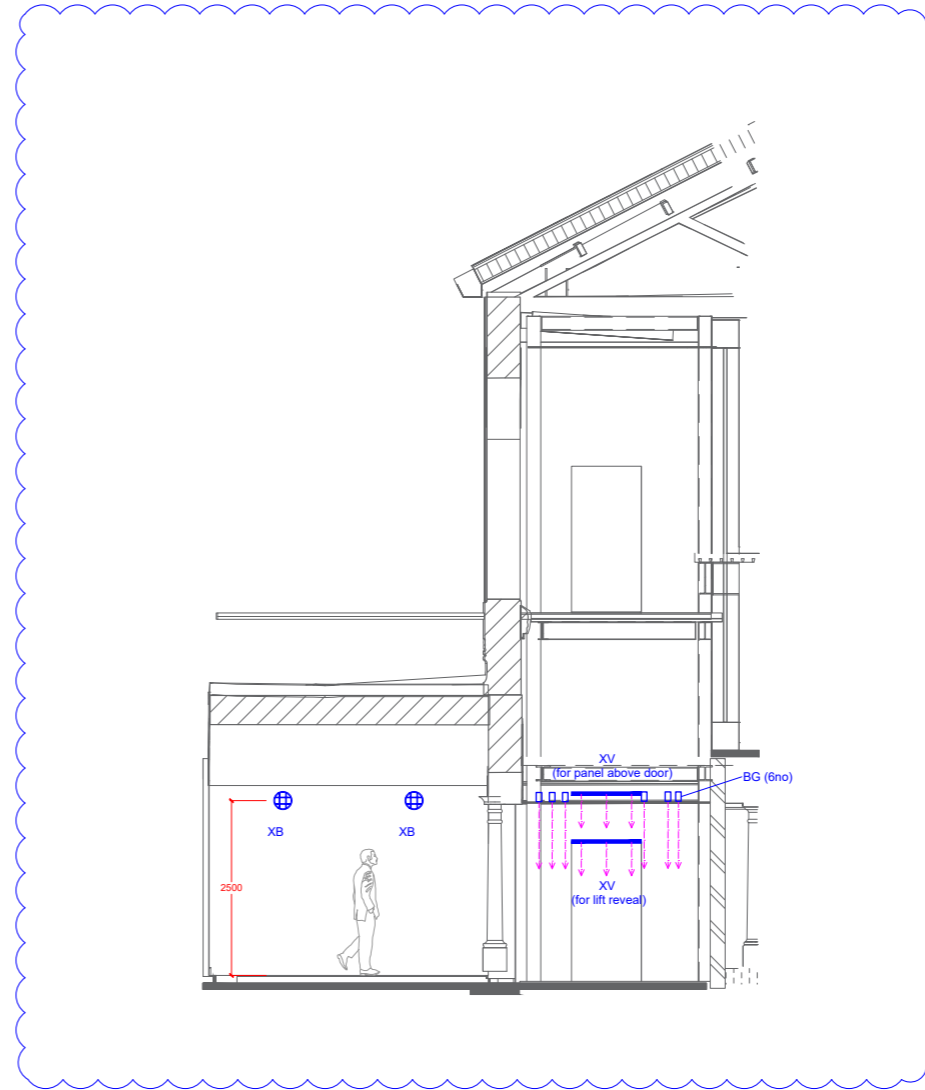
**Symbol Notes (where used):**  
Symbols indicate positions of luminaires and other equipment.  
The alphanumeric reference beside each symbol refers to luminaire type - see relevant *Speirs+Major Lighting Equipment Specification*.  
The numeric code beside each symbol refers to a logical control channel reference (NOT the same as a physical wiring circuit). For details of logical channels see relevant *Speirs+Major Control Channel Schedule*. For details of wiring circuits, etc, see relevant engineers' drawings.

**Copyright:**  
© Speirs and Major Associates, date as below. Under UK law, all rights described in Chapter 4 of the Copyrights Designs and Patents Act 1988 have been generally asserted.

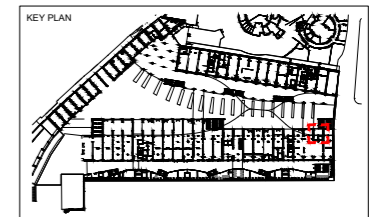
**IMPORTANT:**  
**THIS DRAWING IS NOT TO BE ISSUED FOR TENDER OR CONSTRUCTION. IF THIS DRAWING IS ISSUED TO CONTRACTORS, IT IS FOR INFORMATION ONLY - ARCHITECTS' AND ENGINEERS' DRAWINGS MUST BE USED AS THE BASIS FOR TENDER AND CONSTRUCTION.**



01 Core 6 - Section Looking South  
Scale 1:50@ A1



02 Core 6 - Section Looking North  
Scale 1:50@ A1



02	31/05/16	JF	Stage 3 update
01	29/02/16	TJ	Stage 3 update
00	07/10/15	TJ	Stage 3 issue

Rev.	Date	By	Notes
------	------	----	-------

**Project:**  
Coal Drops Yard, King's Cross  
London, UK

**Drawing:**  
Core 6  
Sections

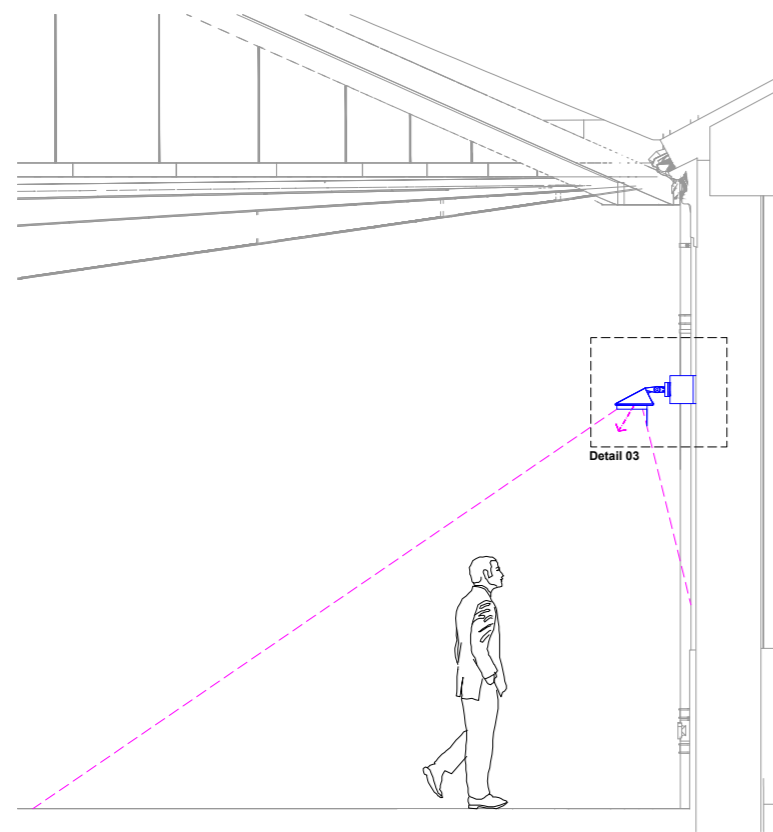
Drawing Number:	Rev.
KXC-M0-001-S+M10793-J-63-5011	02

Scale: 1:50 ISO: A1

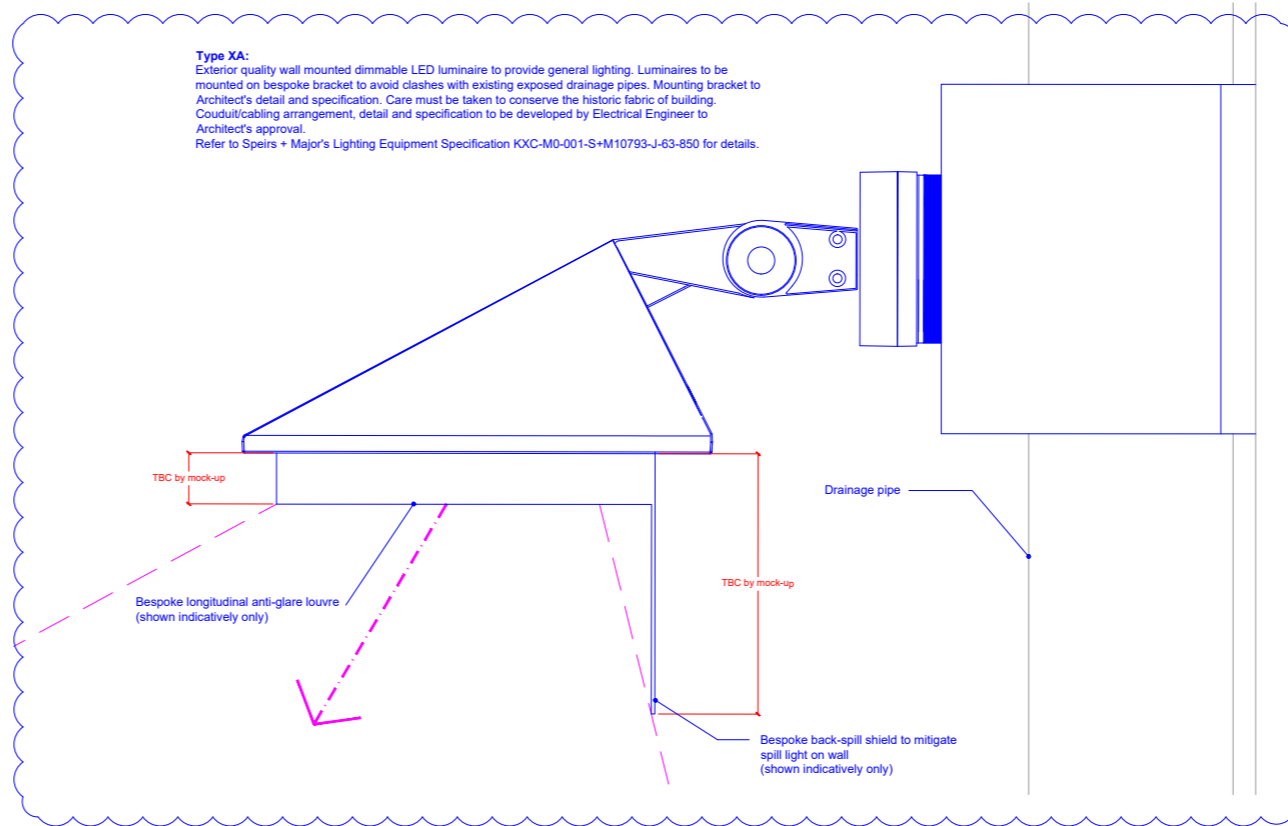
**SPEIRS + MAJOR**  
London: Tel +44 (0)20 7067 4700 Fax +44 (0)20 7067 4701  
Edinburgh: Tel +44 (0)131 226 4474 Fax +44 (0)131 220 5331  
www.speirsandmajor.com

**NOTE:**  
ALL WIRING, CONDUITS, CONTAINMENT ROUTES ETC. TO ELECTRICAL ENGINEER'S DRAWINGS, DETAILS AND SPECIFICATION.  
ALL ASSOCIATED FIXINGS, MOUNTING AND BRACKETRY TO ARCHITECT'S DRAWINGS, DETAILS AND SPECIFICATION.  
REFER TO ARCHITECT'S CONSTRUCTION DRAWINGS FOR FINAL SETTING OUT OF LIGHTING EQUIPMENT.

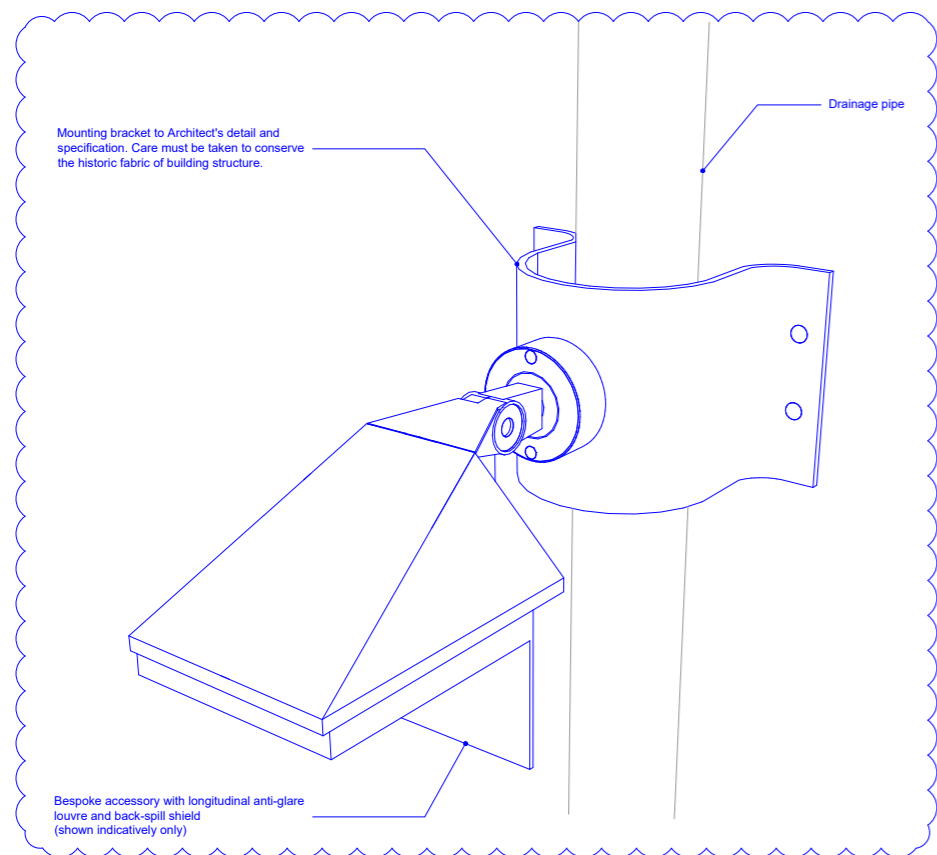




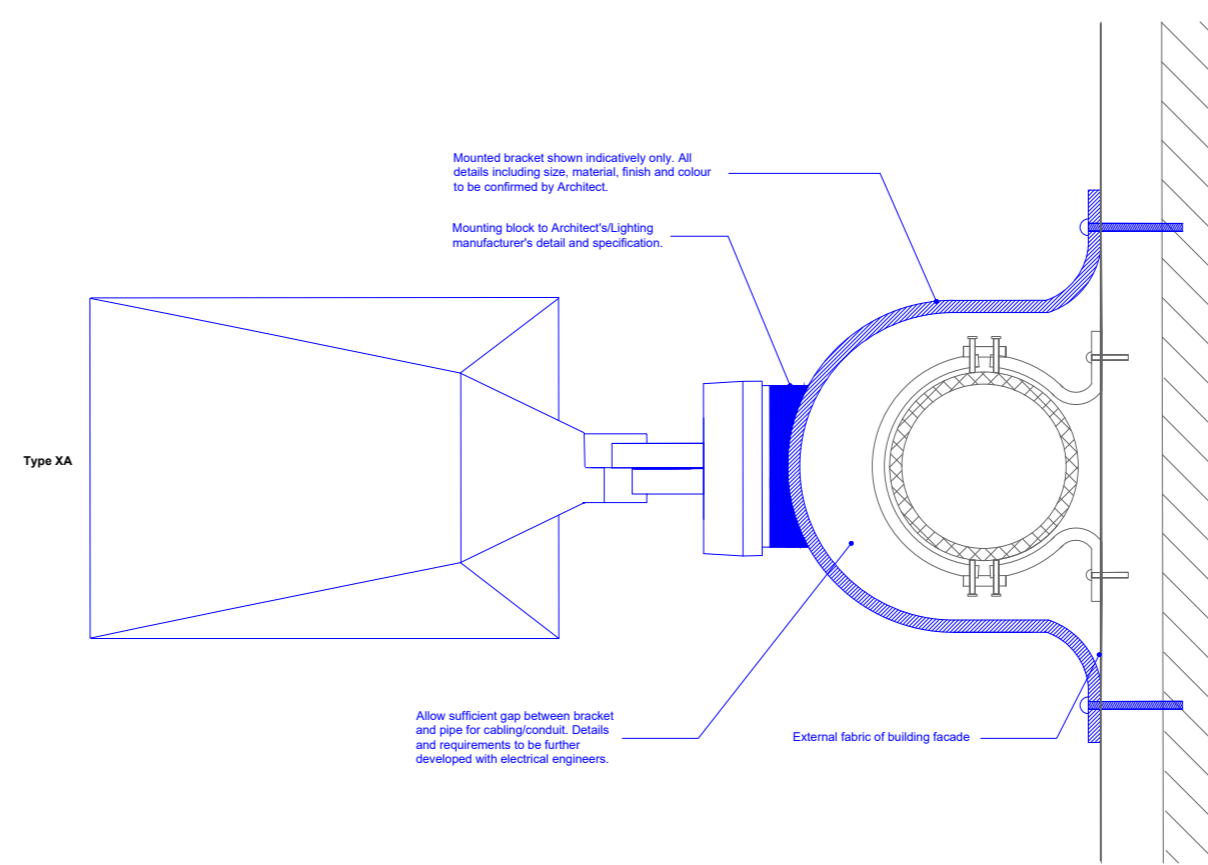
02 Viaduct Level Part Elevation  
Scale 1:25 @ A1



03 Detail - Type XA  
Scale 1:2 @ A1



01 Indicative Sketch - Mounting bracket  
N.T.S.



04 Plan - Type XA  
Scale 1:2 @ A1

**Notes:**  
Do not scale off this drawing.  
All drawings to be read in conjunction with all other relevant documents, including drawings and specifications.  
All works to be carried out in accordance with such Standards, Building and IEE regulations, mandatory and statutory regulations and codes of practice as are deemed to apply in the relevant country or state.  
Refer to Speirs+Major Lighting Designer's Risk Assessment for associated risks under the construction (Design and Management) Regulations (where applicable).

**Symbol Notes (where used):**  
Symbols indicate positions of luminaires and other equipment.  
The alphanumeric reference beside each symbol refers to luminaire type - see relevant Speirs+Major Lighting Equipment Specification.  
The numeric code beside each symbol refers to a logical control channel reference (NOT the same as a physical wiring circuit). For details of logical channels see relevant Speirs+Major Control Channel Schedule. For details of wiring circuits, etc. see relevant engineers' drawings.

**Copyright:**  
© Speirs and Major Associates, date as below. Under UK law, all rights described in Chapter 4 of the Copyrights Designs and Patents Act 1988 have been generally asserted.

**IMPORTANT:**  
**THIS DRAWING IS NOT TO BE ISSUED FOR TENDER OR CONSTRUCTION. IF THIS DRAWING IS ISSUED TO CONTRACTORS, IT IS FOR INFORMATION ONLY - ARCHITECTS' AND ENGINEERS' DRAWINGS MUST BE USED AS THE BASIS FOR TENDER AND CONSTRUCTION.**

01	31/05/16	HT	Stage 3 update
00	07/10/15	JF	Stage 3 issue

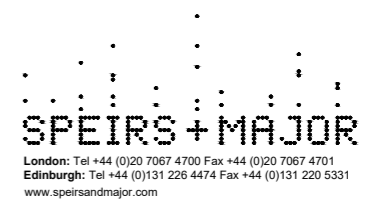
Rev.	Date	By	Notes

**Project:**  
Coal Drops Yard, King's Cross  
London, UK

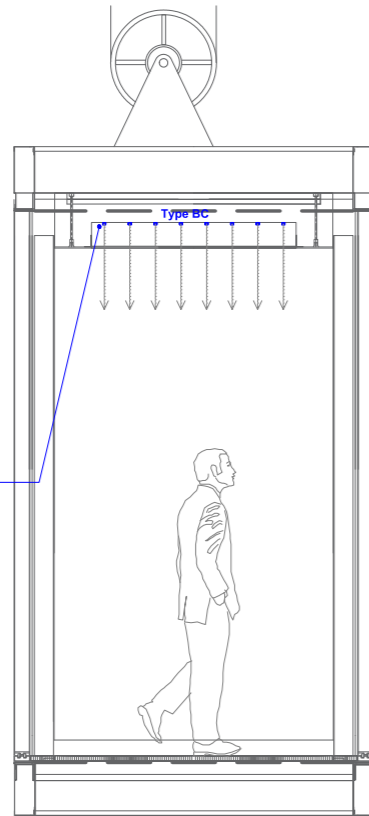
**Drawing:**  
Exposed drainage pipe condition  
Typical Lighting Detail

<b>Drawing Number:</b> KXC-M0-001-S+M10793-J-63-5012	<b>Rev.</b> 01
---	-------------------

**Scale:** As shown ISO: A1

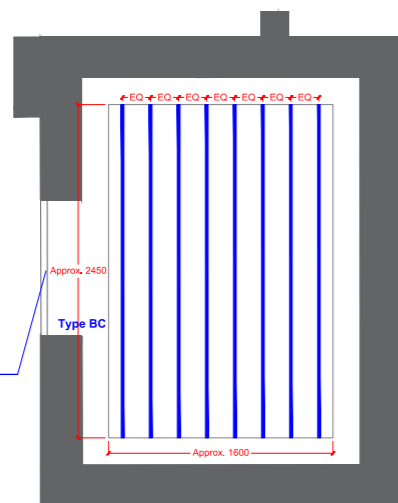


NOTE:  
ALL WIRING, CONDUITS, CONTAINMENT ROUTES ETC. TO ELECTRICAL ENGINEER'S DRAWINGS, DETAILS AND SPECIFICATION.  
ALL ASSOCIATED FIXINGS, MOUNTING AND BRACKETRY TO ARCHITECT'S DRAWINGS, DETAILS AND SPECIFICATION.  
REFER TO ARCHITECT'S CONSTRUCTION DRAWINGS FOR FINAL SETTING OUT OF LIGHTING EQUIPMENT.



**Type BC:**  
Interior quality dimmable uniform backlit 'light box' ceiling system inside lift car to provide general lighting. Remote PSU and DALI dimmable drivers to be located in an accessible, dry, clean, ventilated place. Suitable position to be confirmed by others.  
Refer to Speirs + Major's Lighting Equipment Specification KXC-M0-001-S+M10793-J-63-850 for details.

**02 Typical Lift Car - Indicative Section**  
Scale: NTS @ A1

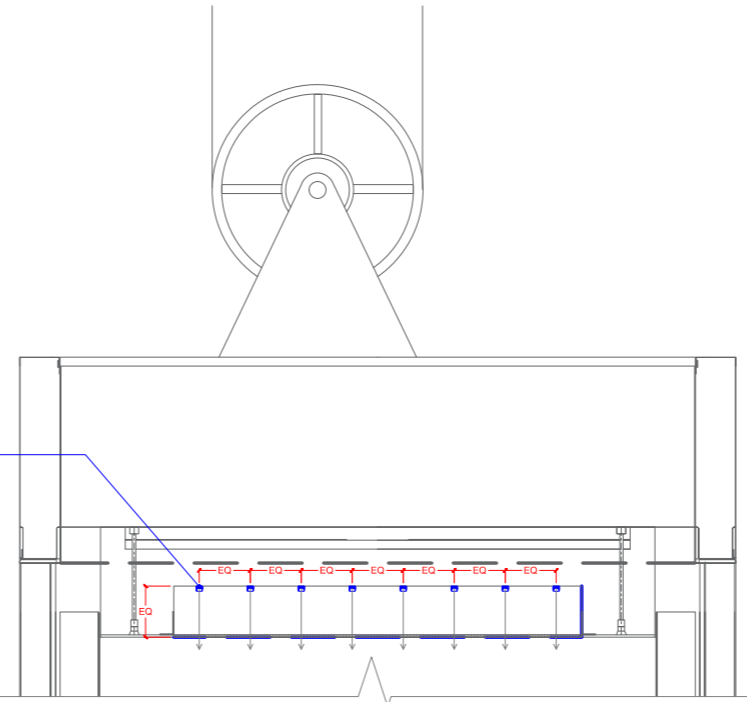


Size of backlit 'light box' ceiling system shown indicatively only. Dimension and details to be coordinated with lift car design by Contractor's design team and specialist lift manufacturer during Stage 4.

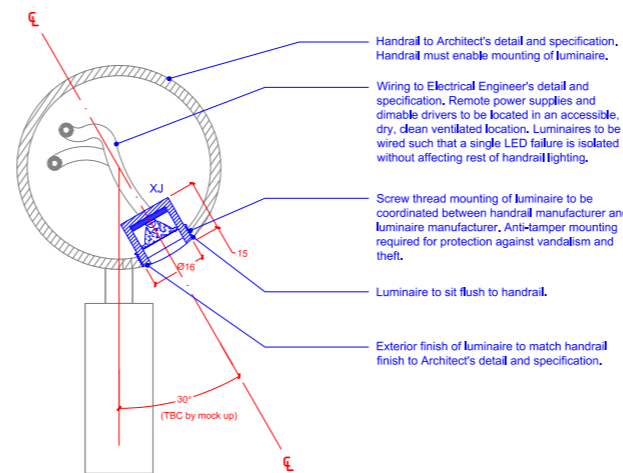
**01 Typical Lift Car - Indicative Plan**  
Scale NTS @ A1

Type BC recessed backlit 'light box' detail to provide uniform glow. Diffuser material to sit flush with finished ceiling height inside lift car.

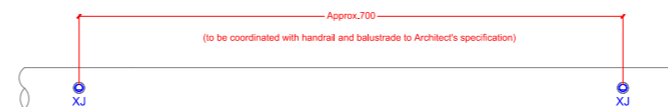
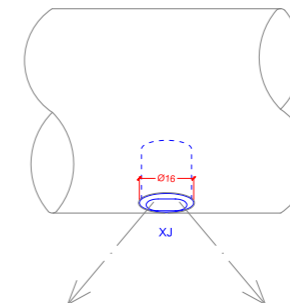
**IMPORTANT NOTE:**  
ALL INFORMATION SHOWN ARE INDICATIVE TO DEMONSTRATE LIGHTING DESIGN INTENT ONLY. INTEGRATION OF LIFT CAR LIGHTING TO BE FURTHER DEVELOPED BY CONTRACTOR'S DESIGN TEAM AND SPECIALIST LIFT MANUFACTURER DURING STAGE 4. ALL DETAILS TO BE CONFIRMED BY 1:1 SCALE MOCK UP TO CLIENT AND DESIGN TEAM APPROVAL PRIOR TO CONSTRUCTION.



**03 Typical Lift Car - Indicative Detail**  
Scale: NTS @ A1



**05 Typical Handrail Lighting - Detail**  
Scale 1:1 @ A1



**04 Typical Handrail Lighting - Elevation**  
Scale 1:5 @ A1

**Notes:**

Do not scale off this drawing.

All drawings to be read in conjunction with all other relevant documents, including drawings and specifications.

All works to be carried out in accordance with such Standards, Building and IEE regulations, mandatory and statutory regulations and codes of practice as are deemed to apply in the relevant country or state.

Refer to Speirs+Major Lighting Designer's Risk Assessment for associated risks under the construction (Design and Management) Regulations (where applicable).

**Symbol Notes (where used):**

Symbols indicate positions of luminaires and other equipment.

The alphanumeric reference beside each symbol refers to luminaire type - see relevant Speirs+Major Lighting Equipment Specification.

The numeric code beside each symbol refers to a logical control channel reference (NOT the same as a physical wiring circuit). For details of logical channels see relevant Speirs+Major Control Channel Schedule. For details of wiring circuits, etc, see relevant engineers' drawings.

**Copyright:**

© Speirs and Major Associates, date as below. Under UK law, all rights described in Chapter 4 of the Copyrights Designs and Patents Act 1988 have been generally asserted.

**IMPORTANT:**

**THIS DRAWING IS NOT TO BE ISSUED FOR TENDER OR CONSTRUCTION. IF THIS DRAWING IS ISSUED TO CONTRACTORS, IT IS FOR INFORMATION ONLY - ARCHITECTS' AND ENGINEERS' DRAWINGS MUST BE USED AS THE BASIS FOR TENDER AND CONSTRUCTION.**

01	29/02/16	TJ	Stage 3 update
00	07/10/15	HT	Stage 3 issue

Rev.	Date	By	Notes
------	------	----	-------

**Project:**  
Coal Drops Yard, King's Cross  
London, UK

**Drawing:**  
Typical Core, Lift Cars, Handrail  
Typical Lighting Details 1

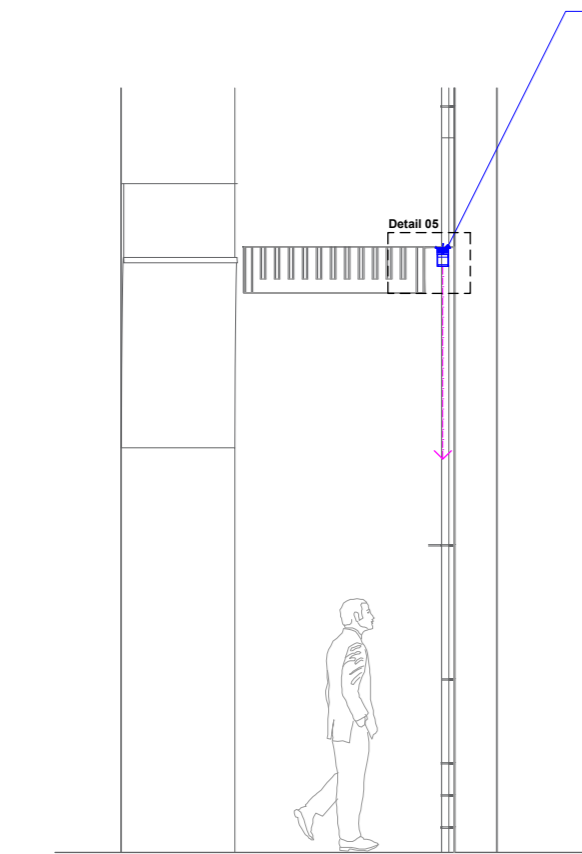
<b>Drawing Number:</b> KXC-M0-001-S+M10793-J-63-5013	<b>Rev.</b> 01
---	-------------------

**Scale:** As shown **ISO:** A1

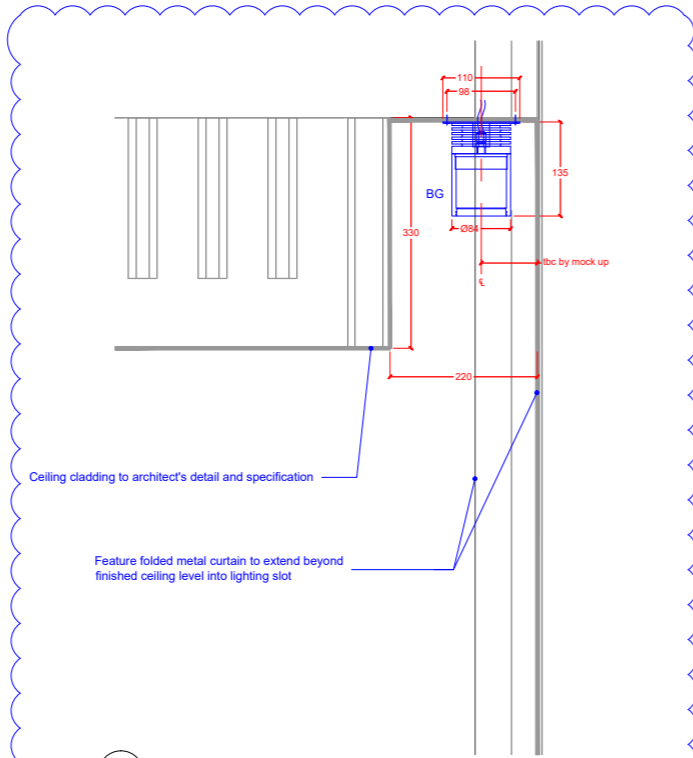


NOTE:  
ALL WIRING, CONDUITS, CONTAINMENT ROUTES ETC. TO ELECTRICAL ENGINEER'S DRAWINGS, DETAILS AND SPECIFICATION.  
ALL ASSOCIATED FIXINGS, MOUNTING AND BRACKETRY TO ARCHITECT'S DRAWINGS, DETAILS AND SPECIFICATION.  
REFER TO ARCHITECT'S CONSTRUCTION DRAWINGS FOR FINAL SETTING OUT OF LIGHTING EQUIPMENT.

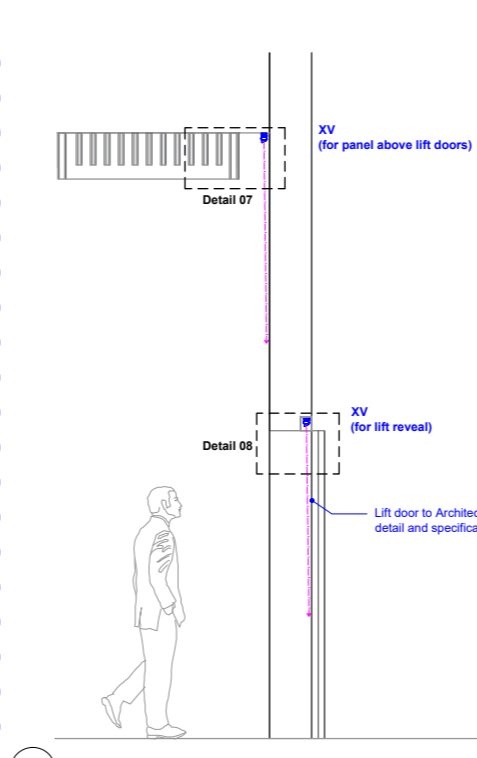
**Type BG:**  
 Exterior quality dimmable LED surface mounted luminaire fully concealed within architectural slot detail to provide graze light down lift core to illuminate metal mesh cladding around lift core. Luminaires to be located within folds. Positions shown indicatively only. All details including mounting positions to be confirmed by 1:1 scale mock up to Client and Design Team approval prior to construction. Luminaires to be individually controlled via DMX protocol to provide subtle chasing movement of light. Remote DMX dimmable drivers to be located in an accessible, dry, clean, ventilated place. Suitable position to be confirmed by others. Refer to Speirs + Major's Lighting Equipment Specification KXC-M0-001-S+M10793-J-63-850 for details.



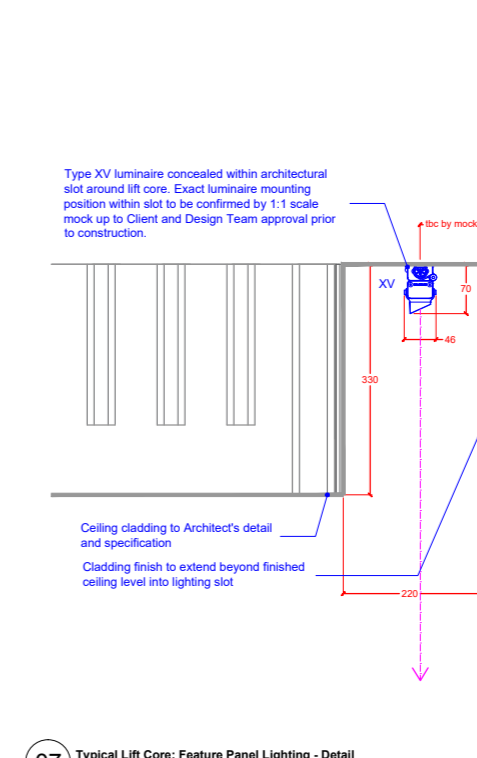
**04** Typical Lift Core: Feature Mesh Curtain Lighting - Section  
 Scale 1:25 @ A1



**05** Typical Lift Core: Feature Mesh Curtain Lighting - Detail  
 Scale 1:5 @ A1



**06** Typical Lift Core: Feature Panel & Lift Reveal Lighting - Section  
 Scale 1:25 @ A1



**07** Typical Lift Core: Feature Panel Lighting - Detail  
 Scale 1:5 @ A1

**Notes:**

Do not scale off this drawing.

All drawings to be read in conjunction with all other relevant documents, including drawings and specifications.

All works to be carried out in accordance with such Standards, Building and IEE regulations, mandatory and statutory regulations and codes of practice as are deemed to apply in the relevant country or state.

Refer to Speirs+Major Lighting Designer's Risk Assessment for associated risks under the construction (Design and Management) Regulations (where applicable).

**Symbol Notes (where used):**

Symbols indicate positions of luminaires and other equipment.

The alphanumeric reference beside each symbol refers to luminaire type - see relevant Speirs+Major Lighting Equipment Specification.

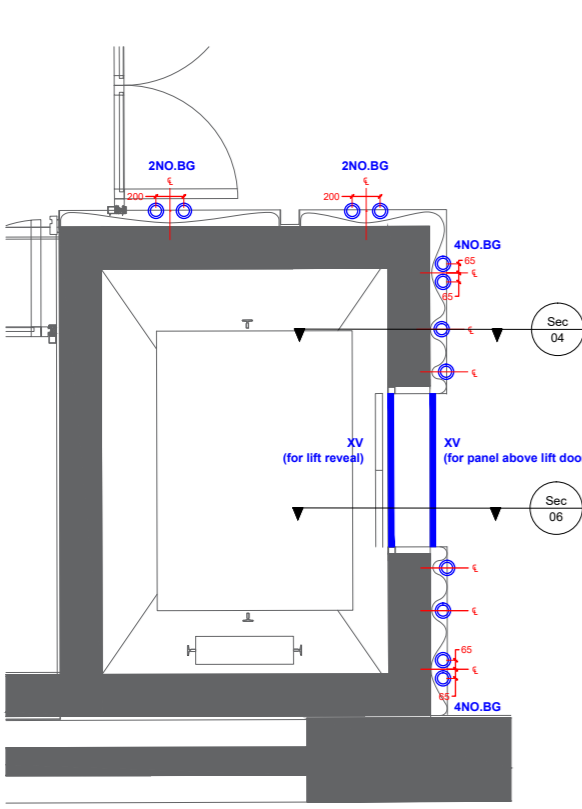
The numeric code beside each symbol refers to a logical control channel reference (NOT the same as a physical wiring circuit). For details of logical channels see relevant Speirs+Major Control Channel Schedule. For details of wiring circuits, etc. see relevant engineers' drawings.

**Copyright:**

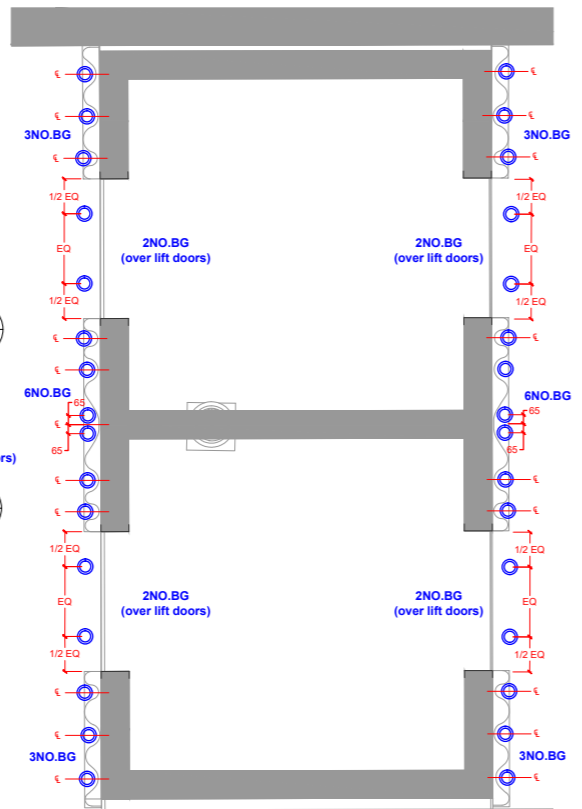
© Speirs and Major Associates, date as below. Under UK law, all rights described in Chapter 4 of the Copyrights Designs and Patents Act 1988 have been generally asserted.

**IMPORTANT:**

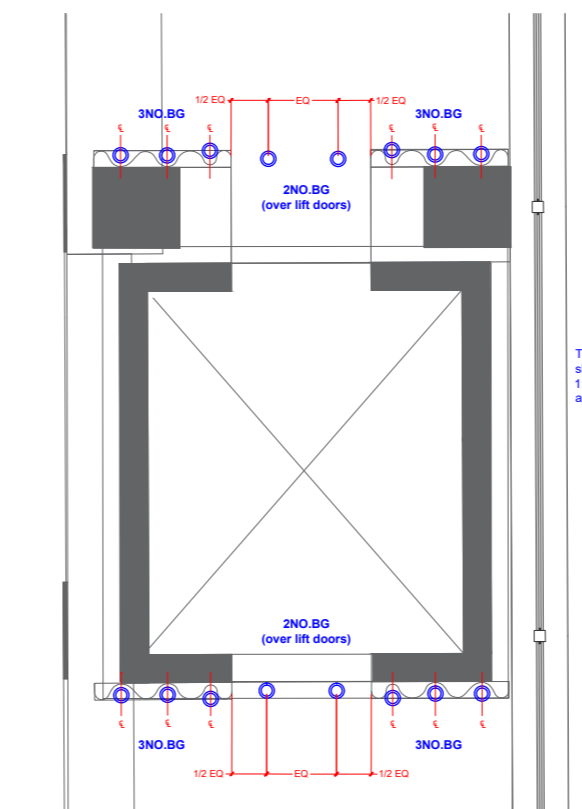
**THIS DRAWING IS NOT TO BE ISSUED FOR TENDER OR CONSTRUCTION. IF THIS DRAWING IS ISSUED TO CONTRACTORS, IT IS FOR INFORMATION ONLY - ARCHITECTS' AND ENGINEERS' DRAWINGS MUST BE USED AS THE BASIS FOR TENDER AND CONSTRUCTION.**



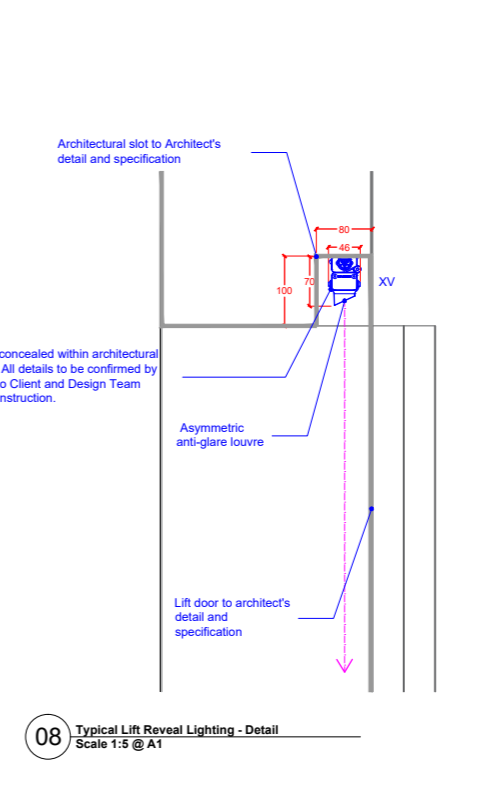
**01** Typical Lift Core Lighting - Part RCP  
 Scale 1:25 @ A1



**02** Feature Lift Core Lighting (Core 4) - Part RCP  
 Scale 1:25 @ A1



**03** Lift Core Lighting (Core 6) - Part RCP  
 Scale 1:25 @ A1



**08** Typical Lift Reveal Lighting - Detail  
 Scale 1:5 @ A1

01	31/05/16	TJ	Stage 3 update
00	29/02/16	TJ	Stage 3 update

Rev.	Date	By	Notes
------	------	----	-------

**Project:**  
 Coal Drops Yard, King's Cross  
 London, UK

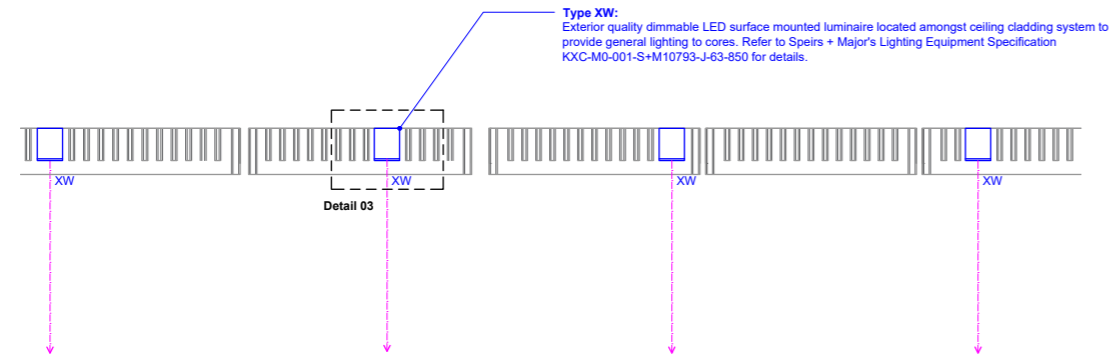
**Drawing:**  
 Typical Core  
 Typical Lighting Details 2

**Drawing Number:** KXC-M0-001-S+M10793-J-63-5014  
**Rev:** 01

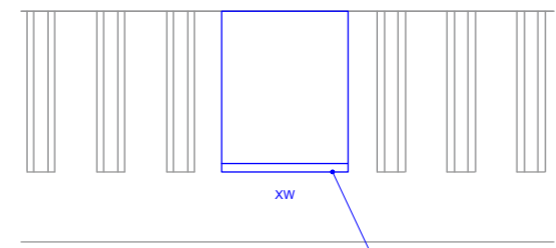
**Scale:** As shown  
**ISO:** A1



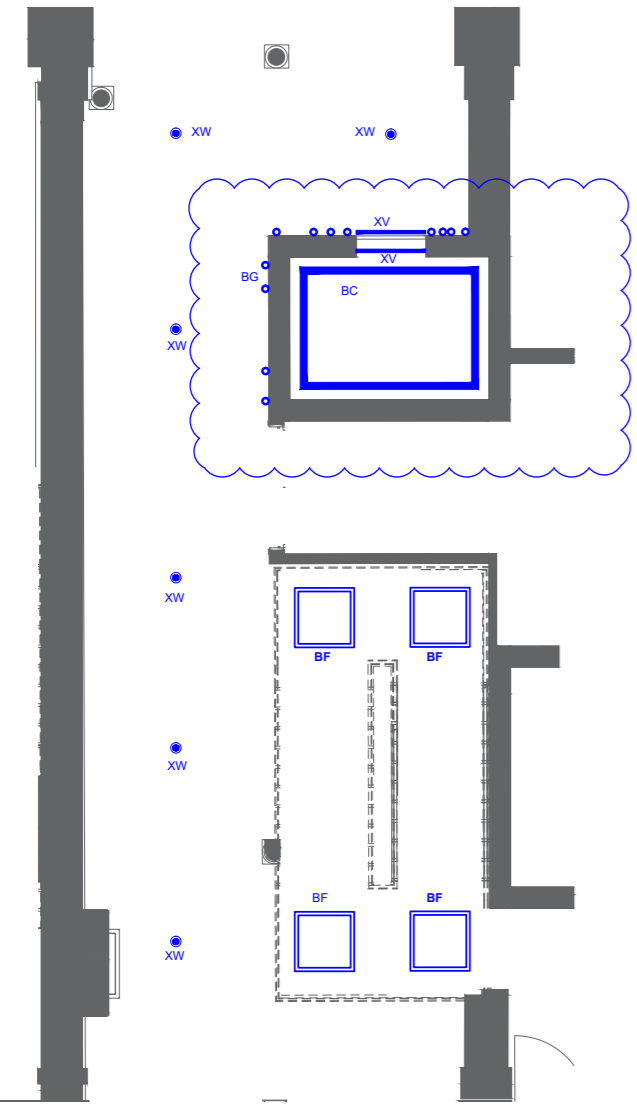
NOTE:  
 ALL WIRING, CONDUITS, CONTAINMENT ROUTES ETC. TO ELECTRICAL ENGINEER'S DRAWINGS, DETAILS AND SPECIFICATION.  
 ALL ASSOCIATED FIXINGS, MOUNTING AND BRACKETRY TO ARCHITECT'S DRAWINGS, DETAILS AND SPECIFICATION.  
 REFER TO ARCHITECT'S CONSTRUCTION DRAWINGS FOR FINAL SETTING OUT OF LIGHTING EQUIPMENT.



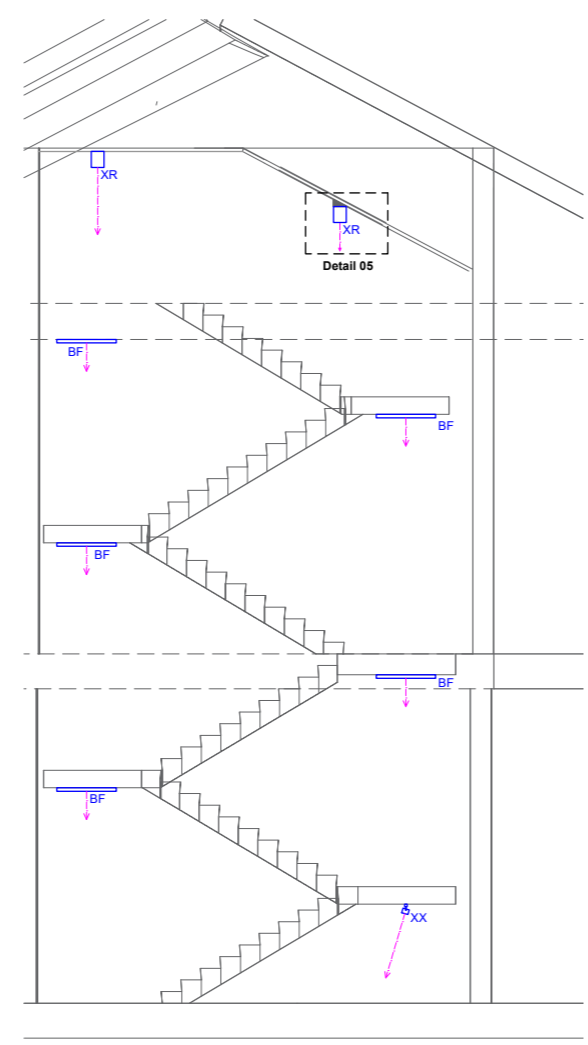
02 Typical Core Downlight - Part Section  
Scale 1:25 @ A1



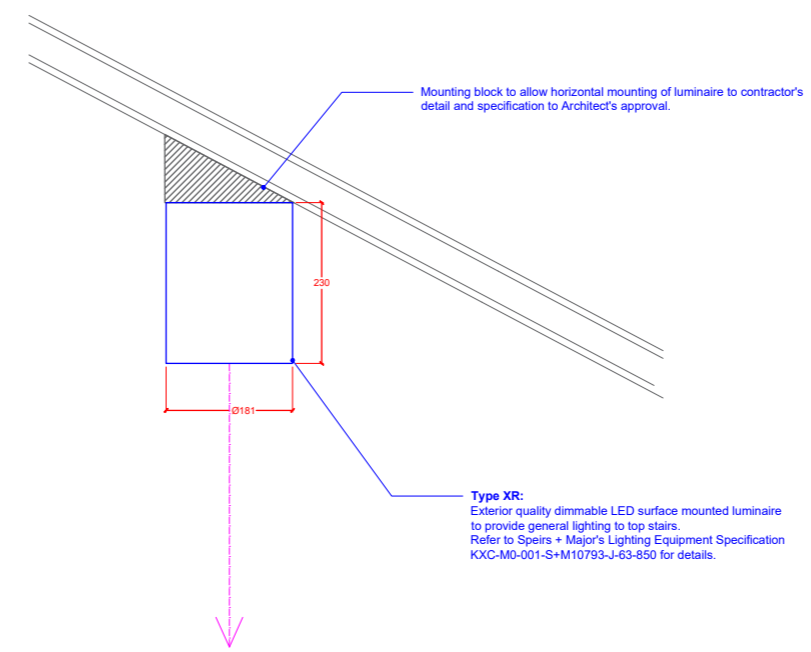
03 Typical Core Downlight - Detail  
Scale 1:5 @ A1



01 Typical Core Lighting - Part RCP  
Scale 1:50 @ A1



04 Typical Stair Core Lighting - Part Section  
Scale 1:50 @ A1



05 Typical Core Downlight to Top Stairs - Detail  
Scale 1:5 @ A1

**Notes:**  
Do not scale off this drawing.  
All drawings to be read in conjunction with all other relevant documents, including drawings and specifications.  
All works to be carried out in accordance with such Standards, Building and IEE regulations, mandatory and statutory regulations and codes of practice as are deemed to apply in the relevant country or state.  
Refer to Speirs+Major Lighting Designer's Risk Assessment for associated risks under the construction (Design and Management) Regulations (where applicable).

**Symbol Notes (where used):**  
Symbols indicate positions of luminaires and other equipment.  
The alphanumeric reference beside each symbol refers to luminaire type - see relevant Speirs+Major Lighting Equipment Specification.  
The numeric code beside each symbol refers to a logical control channel reference (NOT the same as a physical wiring circuit). For details of logical channels see relevant Speirs+Major Control Channel Schedule. For details of wiring circuits, etc, see relevant engineers' drawings.

**Copyright:**  
© Speirs and Major Associates, date as below. Under UK law, all rights described in Chapter 4 of the Copyrights Designs and Patents Act 1988 have been generally asserted.

**IMPORTANT:**  
**THIS DRAWING IS NOT TO BE ISSUED FOR TENDER OR CONSTRUCTION. IF THIS DRAWING IS ISSUED TO CONTRACTORS, IT IS FOR INFORMATION ONLY - ARCHITECTS' AND ENGINEERS' DRAWINGS MUST BE USED AS THE BASIS FOR TENDER AND CONSTRUCTION.**

01	31/05/16	HT	Stage 3 update
00	29/02/16	TJ	Stage 3 update

Rev.	Date	By	Notes
------	------	----	-------

**Project:**  
Coal Drops Yard, King's Cross  
London, UK

**Drawing:**  
Typical Core  
Typical Lighting Details 3

**Drawing Number:** KXC-M0-001-S+M10793-J-63-5015  
**Rev.:** 01

**Scale:** As shown  
**ISO:** A1



NOTE:  
ALL WIRING, CONDUITS, CONTAINMENT ROUTES ETC. TO ELECTRICAL ENGINEER'S DRAWINGS, DETAILS AND SPECIFICATION.  
ALL ASSOCIATED FIXINGS, MOUNTING AND BRACKETRY TO ARCHITECT'S DRAWINGS, DETAILS AND SPECIFICATION.  
REFER TO ARCHITECT'S CONSTRUCTION DRAWINGS FOR FINAL SETTING OUT OF LIGHTING EQUIPMENT.



