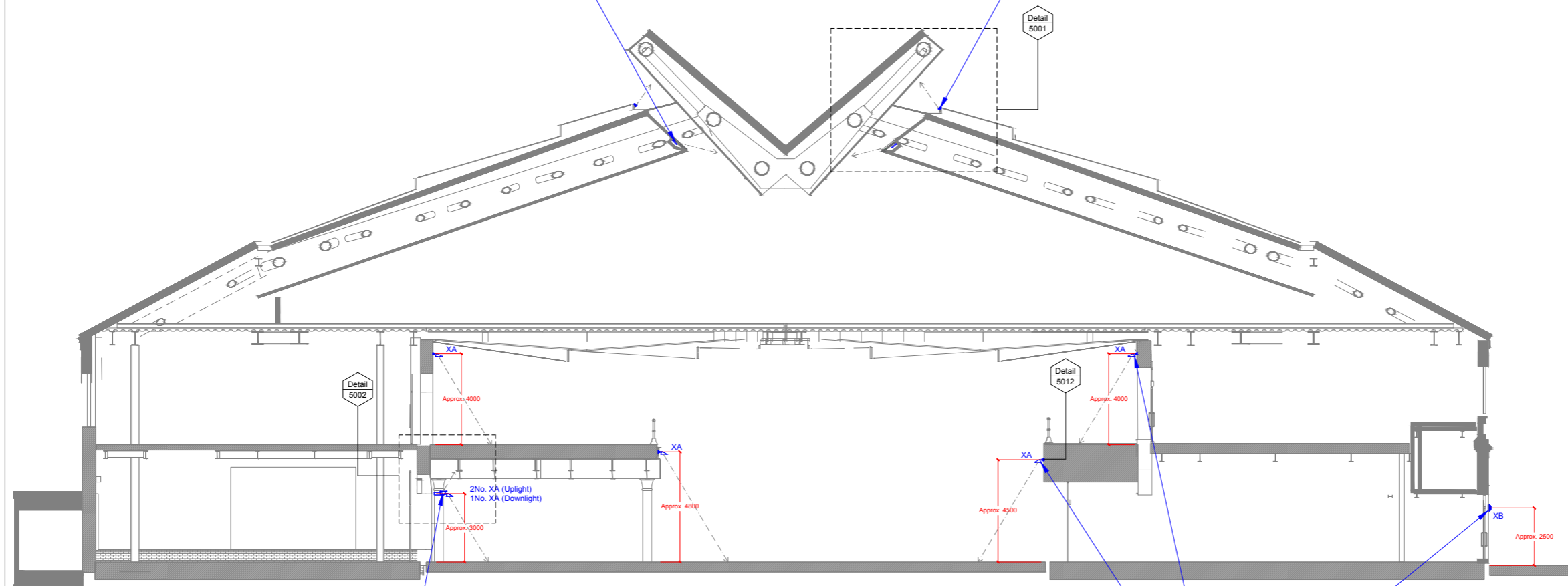


**Type XL:**  
 Exterior quality surface mounted dimmable LED projectors with asymmetric beam distribution, located within continuous louvred architectural channel to illuminate timber clad roof ribbon inside the anchor retail unit. Each luminaire requires individual control via DMX protocol to achieve different intensities along the curved roof due to varying offset distances. Remote DMX dimmable drivers to be located in dry, clean, accessible, ventilated environment within manufacturer's specified maximum distances. Suitable location to be confirmed by Electrical Engineer. All details including luminaire positions, tilting angle, colour temperature to be confirmed by 1:1 scale mock-up for Client and Design Team approval prior to construction. Refer to Speirs + Major's Lighting Equipment Specification KXC-M0-001-S+M10793-J-63-850 for details.

**Type XF:**  
 Exterior quality surface mounted dimmable linear LED luminaire to illuminate copper finish exterior roof ribbon. Remote DMX Data Enabler to be located in clean, accessible, ventilated environment within manufacturer's specified maximum distances. Suitable location to be confirmed by Electrical Engineer. 305mm luminaire modules to be installed continuously end-to-end to avoid any visible shadow gaps. Each luminaire requires individual control via DMX protocol to achieve different intensities along the curved roof due to varying offset distances. All details including luminaire positions, tilting angle, colour temperature to be confirmed by 1:1 scale mock-up for Client and Design Team approval prior to construction. Refer to Speirs + Major's Lighting Equipment Specification KXC-M0-001-S+M10793-J-63-850 for details.



**NOTE:**  
 All luminaire mounting heights shown indicatively only. Exact mounting height of Type XA & XB luminaires to be coordinated with modulation / patterning of brickwork and arches on site. All details to be confirmed during Stage 4 by Design & Build Contractor's design team prior to construction.

**Type XA:**  
 Exterior quality wall mounted dimmable LED luminaire to provide general lighting and uplighting to soffit. Luminaires to be collar mounted on columns below covered areas of Western Coal Drops. Mounting bracket to Architect's detail and specification. Care must be taken to conserve the historic fabric of building. Couduit/cabling arrangement, detail and specification to be developed by Electrical Engineer to Architect's approval. Refer to Speirs + Major's Lighting Equipment Specification KXC-M0-001-S+M10793-J-63-850 for details.

**Type XB:**  
 Exterior quality wall mounted dimmable LED bulkhead luminaire to illuminate Lower Stable Street. Luminaire to provide diffused light to provide gentle uplighting to street facing brick facade. Care must be taken to conserve the historic fabric of building. Couduit/cabling arrangement, detail and specification to be developed by Electrical Engineer to Architect's approval. Refer to Speirs + Major's Lighting Equipment Specification KXC-M0-001-S+M10793-J-63-850 for details.

**Type XA:**  
 Exterior quality wall mounted dimmable LED luminaire to provide general lighting to yard. Mounting detail requires coordination with drainage pipe in some areas. Mounting bracket to Architect's detail and specification. Care must be taken to conserve the historic fabric of building. Couduit/cabling arrangement, detail and specification to be developed by Electrical Engineer to Architect's approval. Refer to Speirs + Major's Lighting Equipment Specification KXC-M0-001-S+M10793-J-63-850 for details.

**Notes:**

Do not scale off this drawing.

All drawings to be read in conjunction with all other relevant documents, including drawings and specifications.

All works to be carried out in accordance with such Standards, Building and IEE regulations, mandatory and statutory regulations and codes of practice as are deemed to apply in the relevant country or state.

Refer to Speirs+Major Lighting Designer's Risk Assessment for associated risks under the construction (Design and Management) Regulations (where applicable).

**Symbol Notes (where used):**

Symbols indicate positions of luminaires and other equipment.

The alphanumeric reference beside each symbol refers to luminaire type - see relevant Speirs+Major Lighting Equipment Specification.

The numeric code beside each symbol refers to a logical control channel reference (NOT the same as a physical wiring circuit). For details of logical channels see relevant Speirs+Major Control Channel Schedule. For details of wiring circuits, etc, see relevant engineers' drawings.

**Copyright:**

© Speirs and Major Associates, date as below. Under UK law, all rights described in Chapter 4 of the Copyrights Designs and Patents Act 1988 have been generally asserted.

**IMPORTANT:**

**THIS DRAWING IS NOT TO BE ISSUED FOR TENDER OR CONSTRUCTION. IF THIS DRAWING IS ISSUED TO CONTRACTORS, IT IS FOR INFORMATION ONLY. ARCHITECTS' AND ENGINEERS' DRAWINGS MUST BE USED AS THE BASIS FOR TENDER AND CONSTRUCTION.**

02	07/10/15	HT	Stage 3 issue
01	04/09/15	JF	General revision
00	15/06/15	TT	Preliminary Draft- For Information only

Rev.	Date	By	Notes
------	------	----	-------

**Project:**  
 Coal Drops Yard, King's Cross  
 London, UK

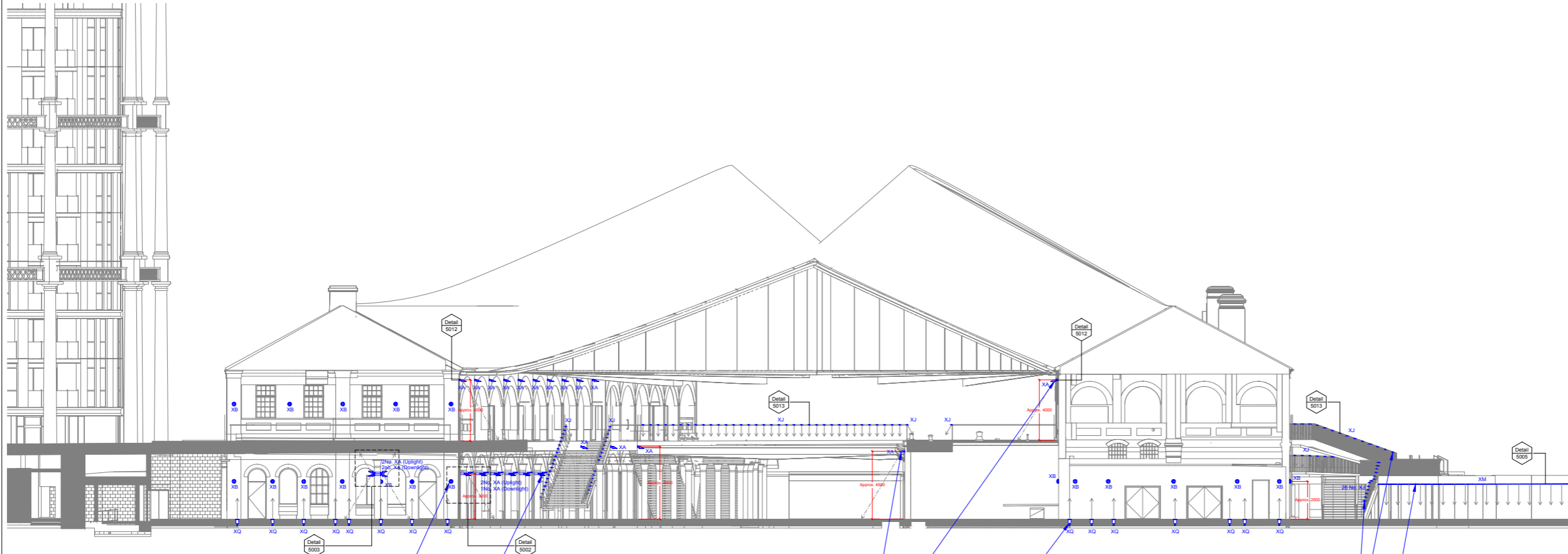
**Drawing:**  
 Typical Section Looking North  
 General Lighting Arrangement

<b>Drawing Number:</b> KXC-M0-001-S+M10793-J-63-203	<b>Rev.</b> 02
--------------------------------------------------------	-------------------

Scale: 1:100 ISO: A1



**NOTE:**  
 ALL WIRING, CONDUITS, CONTAINMENT ROUTES ETC. TO ELECTRICAL ENGINEER'S DRAWINGS, DETAILS AND SPECIFICATION.  
 ALL ASSOCIATED FIXINGS, MOUNTING AND BRACKETRY TO ARCHITECT'S DRAWINGS, DETAILS AND SPECIFICATION.  
 REFER TO ARCHITECT'S CONSTRUCTION DRAWINGS FOR FINAL SETTING OUT OF LIGHTING EQUIPMENT.



**Notes:**  
 Do not scale off this drawing.  
 All drawings to be read in conjunction with all other relevant documents, including drawings and specifications.  
 All works to be carried out in accordance with such Standards, Building and IEE regulations, mandatory and statutory regulations and codes of practice as are deemed to apply in the relevant country or state.  
 Refer to Speirs+Major Lighting Designer's Risk Assessment for associated risks under the construction (Design and Management) Regulations (where applicable).  
**Symbol Notes (where used):**  
 Symbols indicate positions of luminaires and other equipment.  
 The alphanumeric reference beside each symbol refers to luminaire type - see relevant Speirs+Major Lighting Equipment Specification.  
 The numeric code beside each symbol refers to a logical control channel reference (NOT the same as a physical wiring circuit). For details of logical channels see relevant Speirs+Major Control Channel Schedule. For details of wiring circuits, etc. see relevant engineers' drawings.

**Copyright:**  
 © Speirs and Major Associates, date as below. Under UK law, all rights described in Chapter 4 of the Copyrights Designs and Patents Act 1988 have been generally asserted.

**IMPORTANT:**  
**THIS DRAWING IS NOT TO BE ISSUED FOR TENDER OR CONSTRUCTION. IF THIS DRAWING IS ISSUED TO CONTRACTORS, IT IS FOR INFORMATION ONLY. ARCHITECTS' AND ENGINEERS' DRAWINGS MUST BE USED AS THE BASIS FOR TENDER AND CONSTRUCTION.**

**NOTE:**  
 All luminaire mounting heights shown indicatively only. Exact mounting height of Type XI & XII luminaires to be coordinated with modulation / patterning of brickwork and arches on site.  
 All details to be confirmed during Stage 4 by Design & Build Contractor's design team prior to construction.

**Type XII:**  
 Exterior quality wall mounted dimmable LED bulkhead luminaire to illuminate area outside WCD gate end and anchor retail unit. Luminaire to provide diffused light to provide general lighting and gentle lighting to brick wall. Care must be taken to conserve the historic fabric of building. Coudulcabling arrangement, detail and specification to be developed by Electrical Engineer to Architect's approval.  
 Refer to Speirs + Major's Lighting Equipment Specification KXC-MD-001-S-M10793-J-63-850 for details.

**Type XI:**  
 Exterior quality wall mounted dimmable LED luminaire to provide general lighting and uplighting to soft. Luminaires to be collar mounted on columns below covered areas of Western Coal Drops. Mounting bracket to Architect's detail and specification. Care must be taken to conserve the historic fabric of building. Coudulcabling arrangement, detail and specification to be developed by Electrical Engineer to Architect's approval.  
 Refer to Speirs + Major's Lighting Equipment Specification KXC-MD-001-S-M10793-J-63-850 for details.

**Type XI:**  
 Exterior quality wall mounted dimmable LED luminaire to provide general lighting to yard. Mounting detail requires coordination with drainage pipe in some areas. Mounting bracket to Architect's detail and specification. Care must be taken to conserve the historic fabric of building. Coudulcabling arrangement, detail and specification to be developed by Electrical Engineer to Architect's approval.  
 Refer to Speirs + Major's Lighting Equipment Specification KXC-MD-001-S-M10793-J-63-850 for details.

**Type XI:**  
 Exterior quality floor recessed dimmable LED luminaire to uplight southern end of eastern Coal Drops. Luminaire to provide diffused light to softly uplight brick wall. Luminaire quantities and mounting positions to be coordinated with architectural design and facade openings on southern gate end. Luminaires to be installed in strict accordance with manufacturer's installation instructions. Sufficient drainage linked to land drain required. Luminaire must never sit in standing water at any time. Refer to manufacturer's installation instructions for further detail.  
 Refer to Speirs + Major's Lighting Equipment Specification KXC-MD-001-S-M10793-J-63-850 for details.

**Type XI:**  
 Exterior quality non-linear point source dimmable LED luminaire integrated into handrail to provide general lighting to stairs and bridges. Lighting detail to be coordinated with handrail design. Remote dimmable driver to be located in dry, clean, accessible, ventilated environment within manufacturer's specified maximum distances. Suitable location to be confirmed by Electrical Engineer.  
 Refer to Speirs + Major's Lighting Equipment Specification KXC-MD-001-S-M10793-J-63-850 for details.

**Type XI:**  
 Exterior quality surface mounted dimmable LED luminaire located within fully louvred architectural channel along leading edge of Pavilion H overhang to provide general lighting to ramp area. Detail to be coordinated with architectural design. Remote power supplies and dimmable drivers to be located in dry, clean, accessible, ventilated environment within manufacturer's specified maximum distances. Suitable location to be confirmed by Electrical Engineer.  
 Refer to Speirs + Major's Lighting Equipment Specification KXC-MD-001-S-M10793-J-63-850 for details.

Rev.	Date	By	Notes
01	07/10/15	HT	Stage 3 Issue
00	04/09/15	JF	Preliminary Issue

Project:  
 Coal Drops Yard  
 London, UK

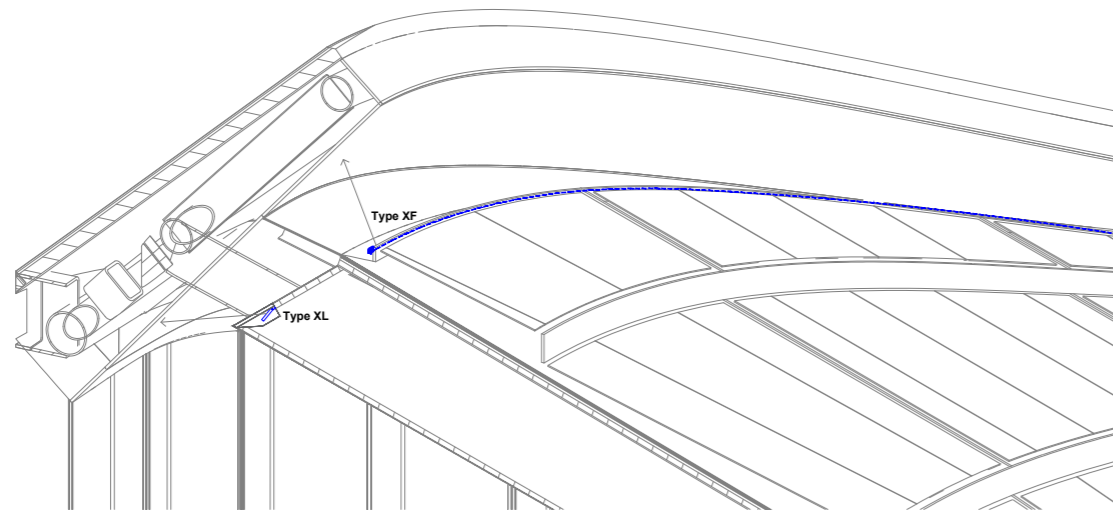
Drawing:  
 South Elevation  
 General Lighting Arrangement

Drawing Number: KXC-MD-001-S-M10793-J-63-303  
 Rev. 01

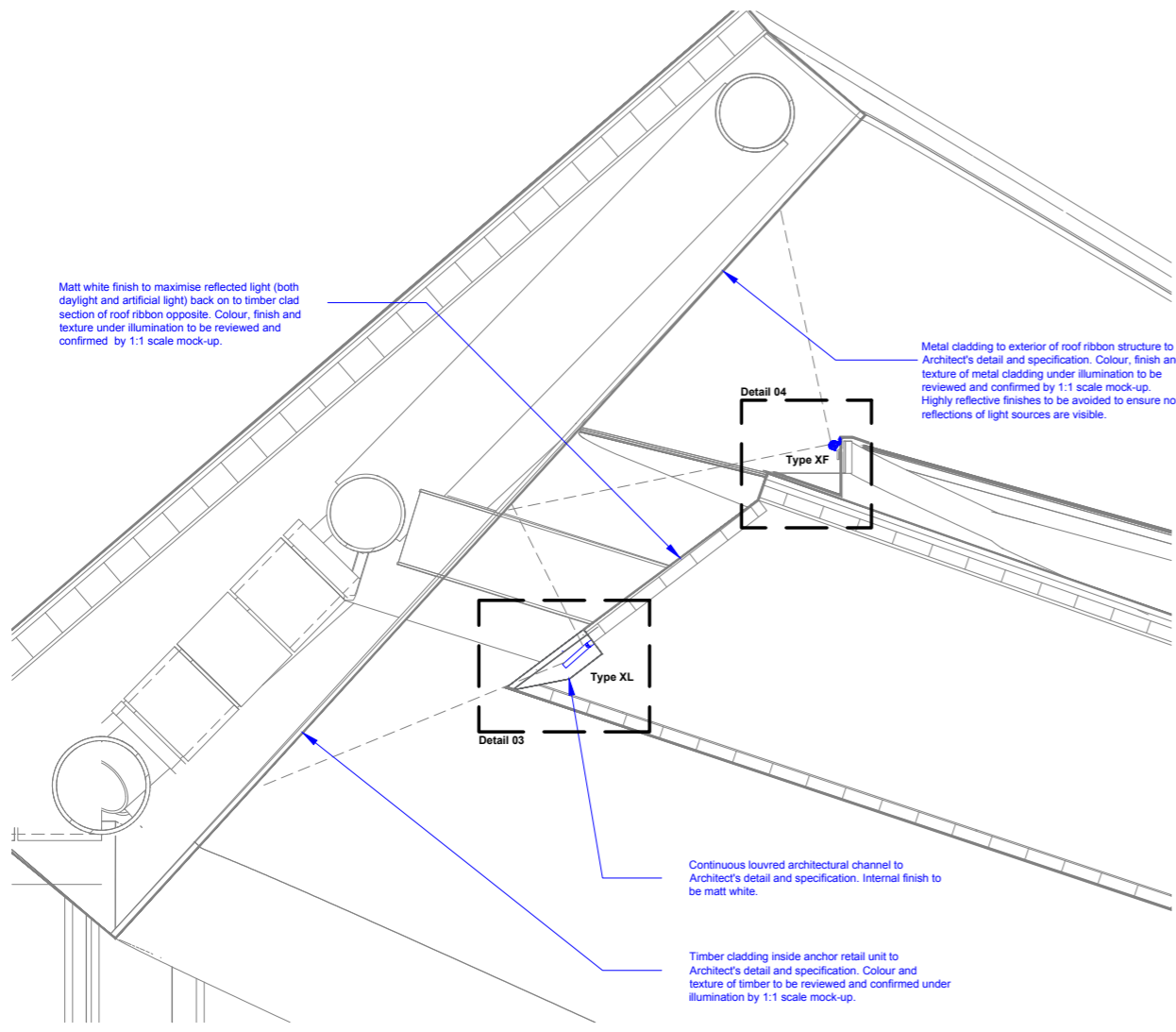
Scale: 1:100 ISO:A0

**NOTE:**  
 ALL WIRING, CONDUITS, CONTAINMENT ROUTES ETC. TO ELECTRICAL ENGINEERS' DRAWINGS, DETAILS AND SPECIFICATION.  
 ALL ASSOCIATED FIXINGS, MOUNTING AND BRACKETRY TO ARCHITECT'S DRAWINGS, DETAILS AND SPECIFICATION.  
 REFER TO ARCHITECT'S CONSTRUCTION DRAWINGS FOR FINAL SETTING OUT OF LIGHTING EQUIPMENT.



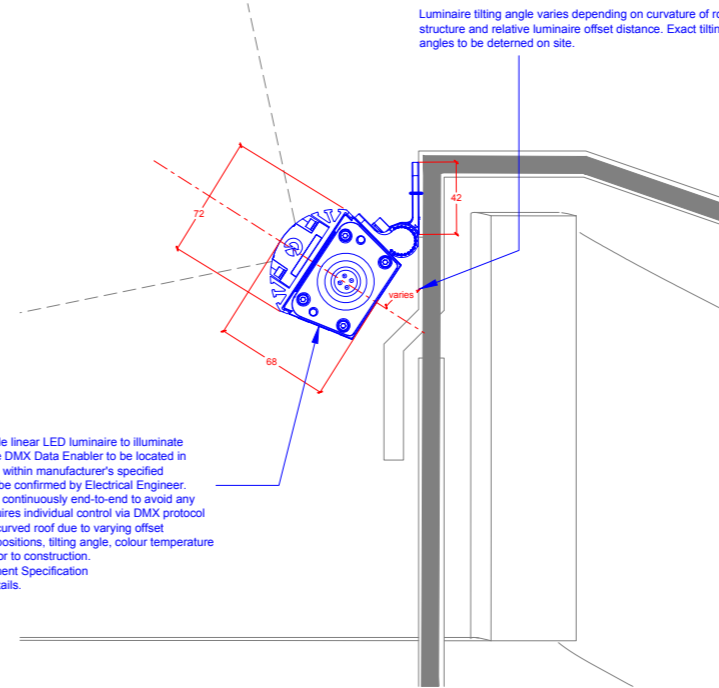


02 Perspective - Roof Ribbon  
Not to scale @ A1



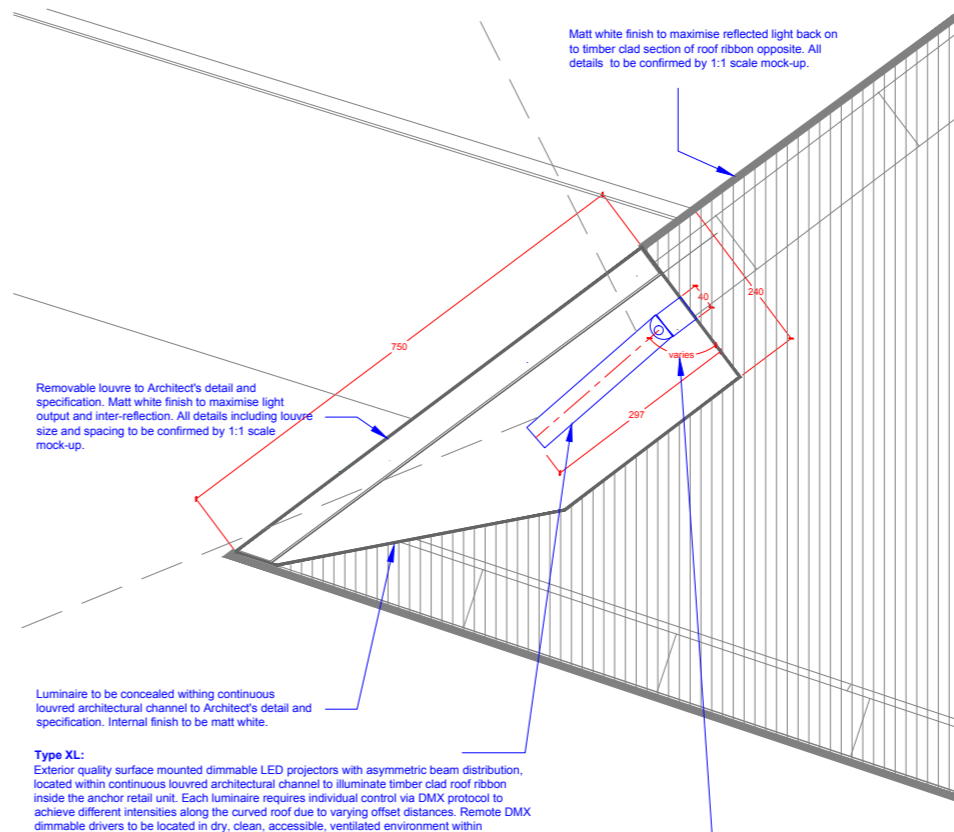
01 Roof ribbon Section  
Scale 1:25 @ A1

NOTE:  
ALL WIRING, CONDUITS, CONTAINMENT ROUTES ETC. TO ELECTRICAL ENGINEER'S DRAWINGS, DETAILS AND SPECIFICATION.  
ALL ASSOCIATED FIXINGS, MOUNTING AND BRACKETRY TO ARCHITECT'S DRAWINGS, DETAILS AND SPECIFICATION.  
REFER TO ARCHITECT'S CONSTRUCTION DRAWINGS FOR FINAL SETTING OUT OF LIGHTING EQUIPMENT.



**Type XF:**  
Exterior quality surface mounted dimmable linear LED luminaire to illuminate copper finish exterior roof ribbon. Remote DMX Data Enabler to be located in clean, accessible, ventilated environment within manufacturer's specified maximum distances. Suitable location to be confirmed by Electrical Engineer. 305mm luminaire modules to be installed continuously end-to-end to avoid any visible shadow gaps. Each luminaire requires individual control via DMX protocol to achieve different intensities along the curved roof due to varying offset distances. All details including luminaire positions, tilting angle, colour temperature to be confirmed by 1:1 scale mock-up prior to construction. Refer to Speirs + Major's Lighting Equipment Specification KXC-M0-001-S+M10793-J-63-850 for details.

04 Detail - Type XF  
Scale 1:2 @ A1



**Type XL:**  
Exterior quality surface mounted dimmable LED projectors with asymmetric beam distribution, located within continuous louvred architectural channel to illuminate timber clad roof ribbon inside the anchor retail unit. Each luminaire requires individual control via DMX protocol to achieve different intensities along the curved roof due to varying offset distances. Remote DMX dimmable drivers to be located in dry, clean, accessible, ventilated environment within manufacturer's specified maximum distances. Suitable location to be confirmed by Electrical Engineer. All details including luminaire positions, tilting angle, colour temperature to be confirmed by 1:1 scale mock-up prior to construction. Refer to Speirs + Major's Lighting Equipment Specification KXC-M0-001-S+M10793-J-63-850 for details.

03 Detail - Type XL  
Scale 1:5 @ A1

**Notes:**  
Do not scale off this drawing.  
All drawings to be read in conjunction with all other relevant documents, including drawings and specifications.  
All works to be carried out in accordance with such Standards, Building and IEE regulations, mandatory and statutory regulations and codes of practice as are deemed to apply in the relevant country or state.  
Refer to Speirs+Major Lighting Designer's Risk Assessment for associated risks under the construction (Design and Management) Regulations (where applicable).

**Symbol Notes (where used):**  
Symbols indicate positions of luminaires and other equipment.  
The alphanumeric reference beside each symbol refers to luminaire type - see relevant Speirs+Major Lighting Equipment Specification.  
The numeric code beside each symbol refers to a logical control channel reference (NOT the same as a physical wiring circuit). For details of logical channels see relevant Speirs+Major Control Channel Schedule. For details of wiring circuits, etc. see relevant engineers' drawings.

**Copyright:**  
© Speirs and Major Associates, date as below. Under UK law, all rights described in Chapter 4 of the Copyrights Designs and Patents Act 1988 have been generally asserted.

**IMPORTANT:**  
**THIS DRAWING IS NOT TO BE ISSUED FOR TENDER OR CONSTRUCTION. IF THIS DRAWING IS ISSUED TO CONTRACTORS, IT IS FOR INFORMATION ONLY. ARCHITECTS' AND ENGINEERS' DRAWINGS MUST BE USED AS THE BASIS FOR TENDER AND CONSTRUCTION.**

01	07/10/15	HT	Stage 3 issue
00	03/09/15	TJ	Preliminary issue

Rev.	Date	By	Notes
------	------	----	-------

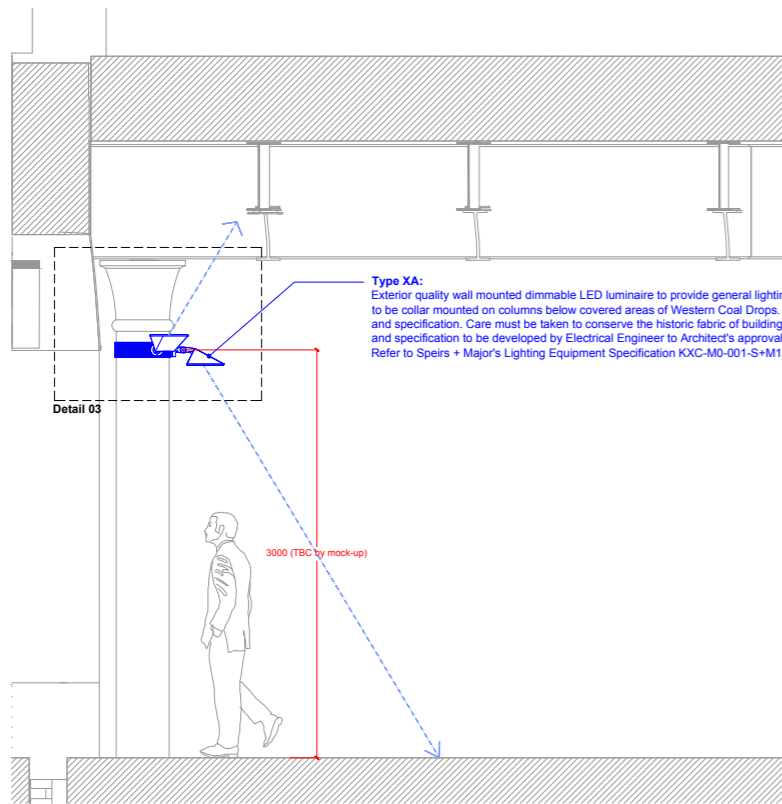
**Project:**  
Coal Drops Yard, King's Cross  
London, UK

**Drawing:**  
Roof Ribbon  
Typical Lighting Detail

<b>Drawing Number:</b> KXC-M0-001-S+M10793-J-63-5001	<b>Rev.</b> 01
---------------------------------------------------------	-------------------

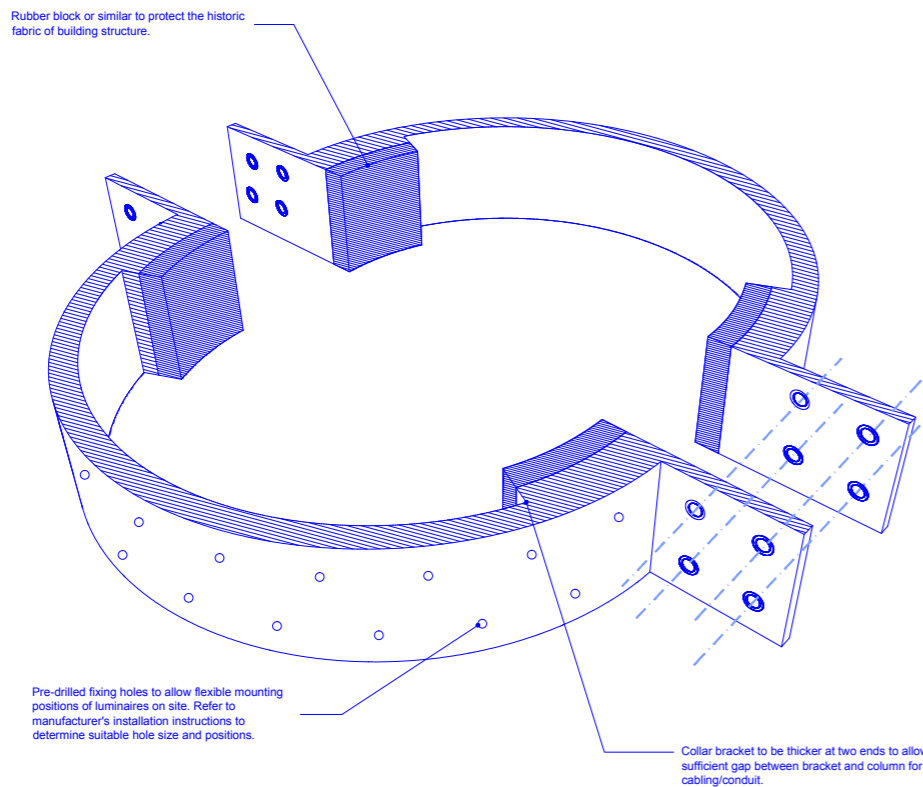
**Scale:** As shown **ISO:** A1





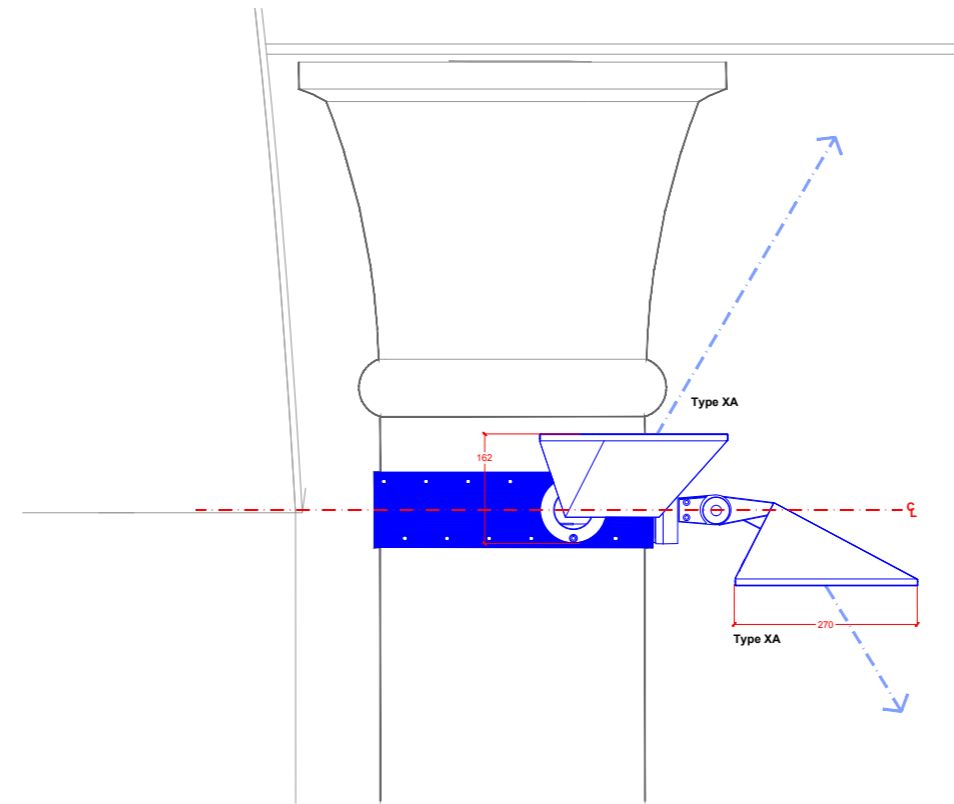
**Type XA:**  
Exterior quality wall mounted dimmable LED luminaire to provide general lighting and uplighting to soffit. Luminaires to be collar mounted on columns below covered areas of Western Coal Drops. Mounting bracket to Architect's detail and specification. Care must be taken to conserve the historic fabric of building. Coudut/cabling arrangement, detail and specification to be developed by Electrical Engineer to Architect's approval. Refer to Speirs + Major's Lighting Equipment Specification KXC-M0-001-S+M10793-J-63-850 for details.

02 Yard Level Part Elevation  
Scale 1:25 @ A1

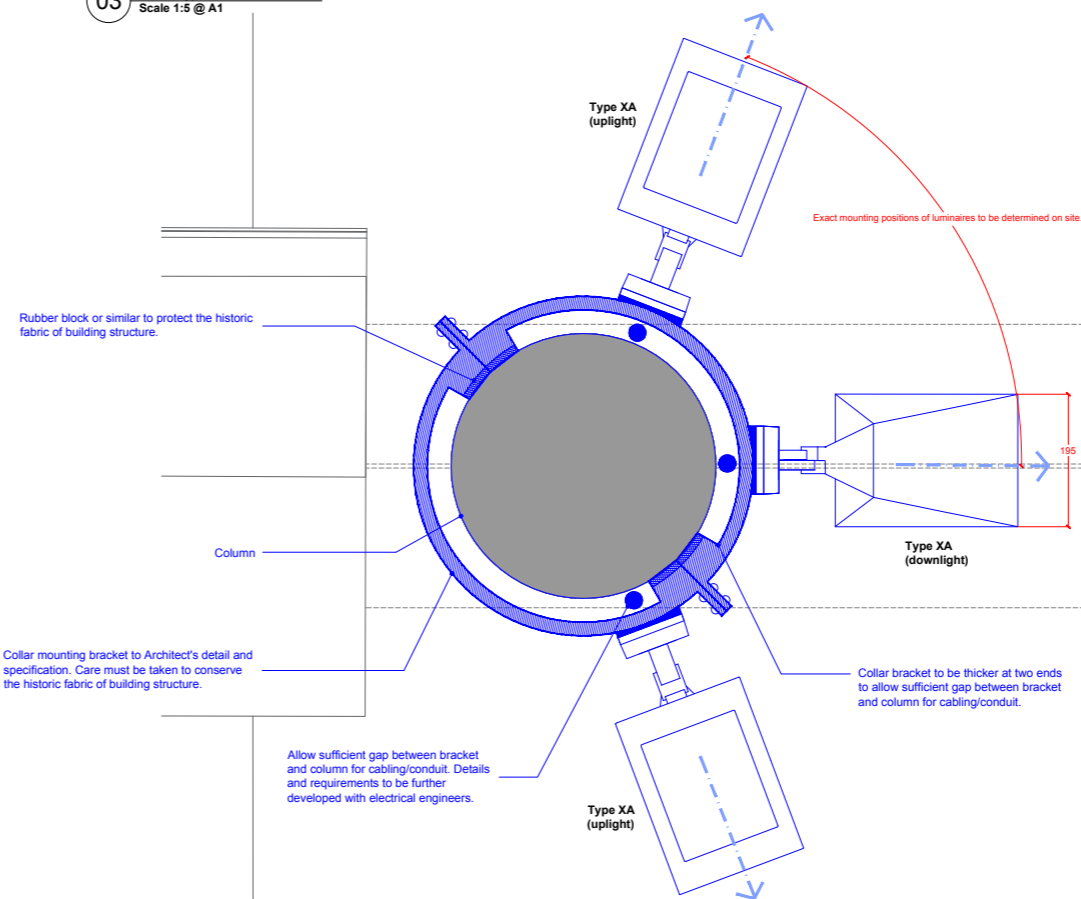


01 Indicative Sketch - Collar mounting bracket  
N.T.S.

NOTE:  
ALL WIRING, CONDUITS, CONTAINMENT ROUTES ETC. TO ELECTRICAL ENGINEER'S DRAWINGS, DETAILS AND SPECIFICATION.  
ALL ASSOCIATED FIXINGS, MOUNTING AND BRACKETRY TO ARCHITECT'S DRAWINGS, DETAILS AND SPECIFICATION.  
REFER TO ARCHITECT'S CONSTRUCTION DRAWINGS FOR FINAL SETTING OUT OF LIGHTING EQUIPMENT.



03 Detail - Type XA  
Scale 1:5 @ A1



04 Detail - Type XA  
Scale 1:5 @ A1

**Notes:**  
Do not scale off this drawing.  
All drawings to be read in conjunction with all other relevant documents, including drawings and specifications.  
All works to be carried out in accordance with such Standards, Building and IEE regulations, mandatory and statutory regulations and codes of practice as are deemed to apply in the relevant country or state.  
Refer to Speirs+Major Lighting Designer's Risk Assessment for associated risks under the construction (Design and Management) Regulations (where applicable).

**Symbol Notes (where used):**  
Symbols indicate positions of luminaires and other equipment.  
The alphanumeric reference beside each symbol refers to luminaire type - see relevant Speirs+Major Lighting Equipment Specification.  
The numeric code beside each symbol refers to a logical control channel reference (NOT the same as a physical wiring circuit). For details of logical channels see relevant Speirs+Major Control Channel Schedule. For details of wiring circuits, etc. see relevant engineers' drawings.

**Copyright:**  
© Speirs and Major Associates, date as below. Under UK law, all rights described in Chapter 4 of the Copyrights Designs and Patents Act 1988 have been generally asserted.

**IMPORTANT:**  
THIS DRAWING IS NOT TO BE ISSUED FOR TENDER OR CONSTRUCTION. IF THIS DRAWING IS ISSUED TO CONTRACTORS, IT IS FOR INFORMATION ONLY - ARCHITECTS' AND ENGINEERS' DRAWINGS MUST BE USED AS THE BASIS FOR TENDER AND CONSTRUCTION.

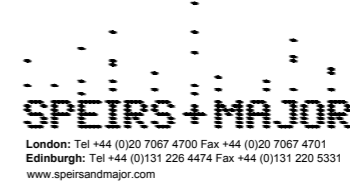
01	07/10/15	HT	Stage 3 issue
00	04/09/15	JF	Preliminary issue

Rev.	Date	By	Notes

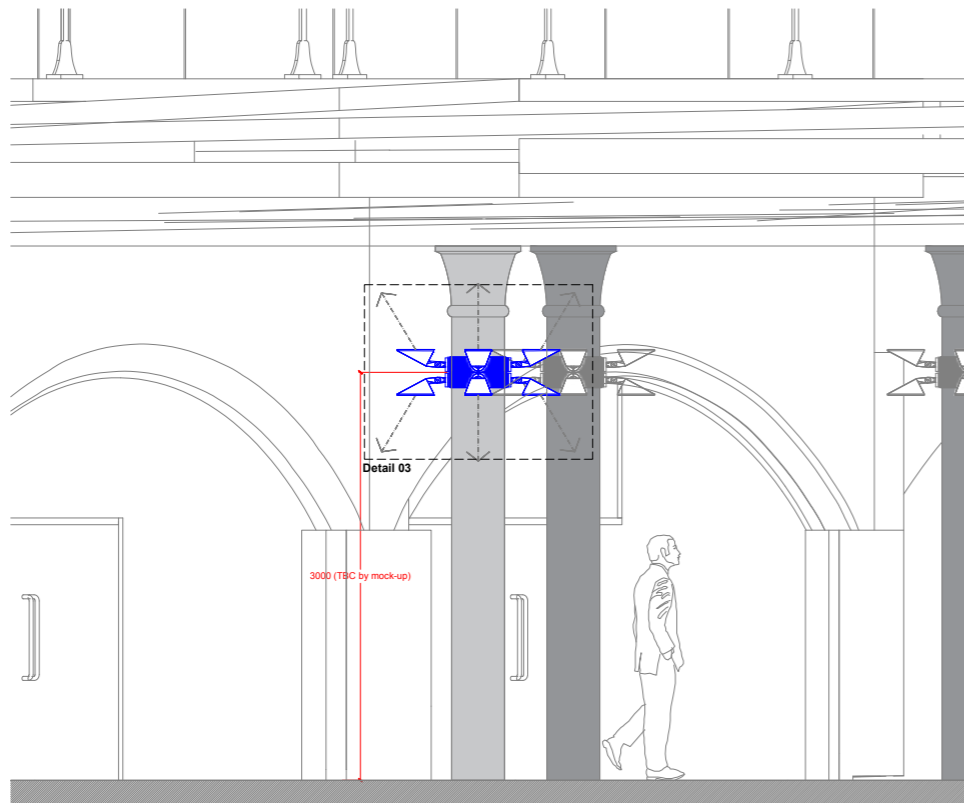
**Project:**  
Coal Drops Yard, King's Cross  
London, UK

**Drawing:**  
WCD Yard Level Columns: 3 head luminaire mounting  
Typical Lighting Detail

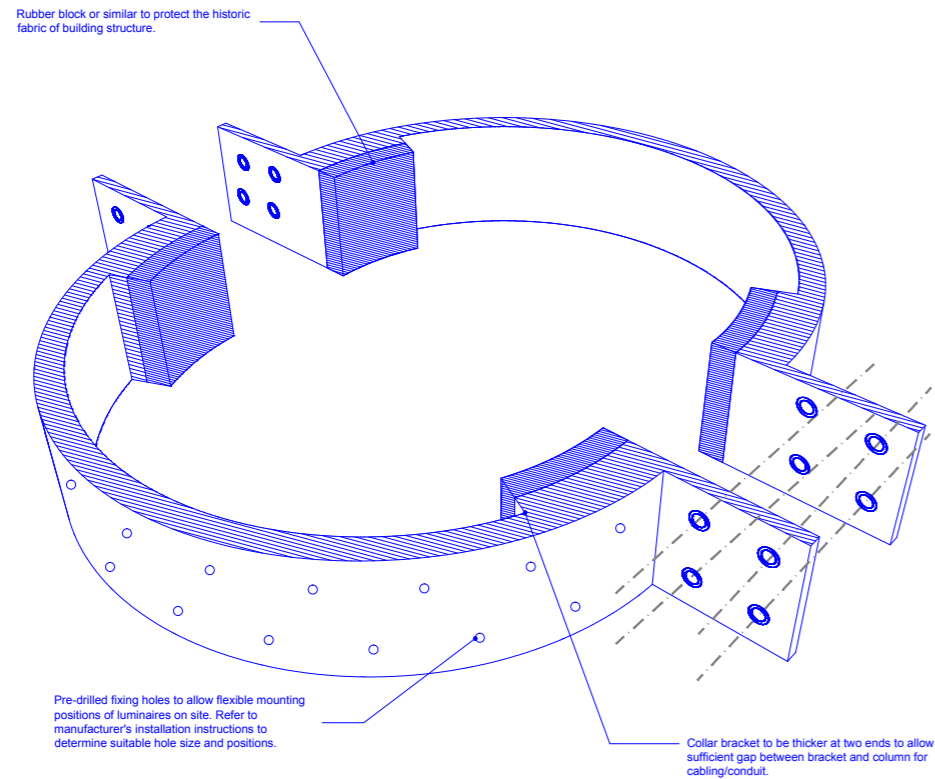
<b>Drawing Number:</b> KXC-M0-001-S+M10793-J-63-5002	<b>Rev.</b> 01
<b>Scale:</b> 1:100	<b>ISO:</b> A1



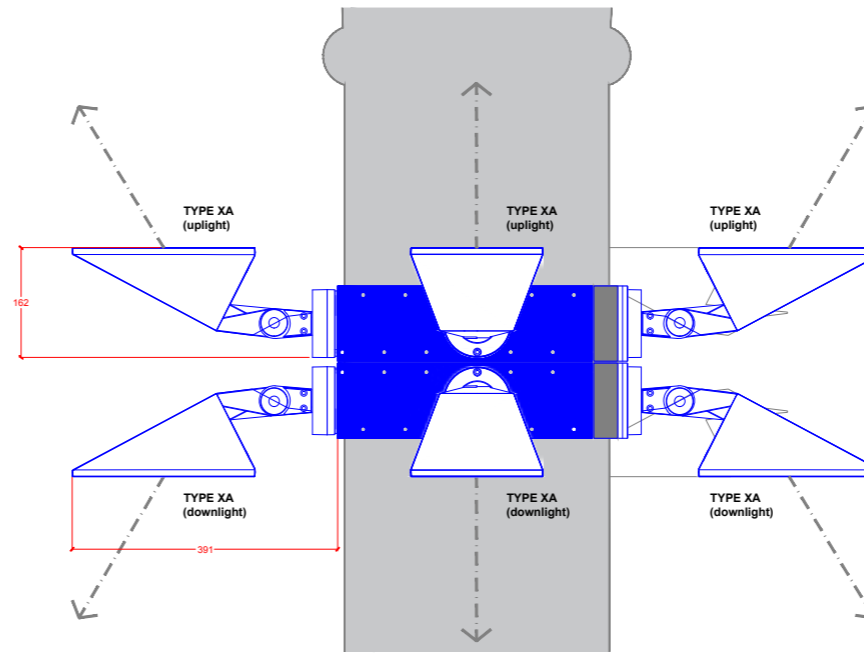




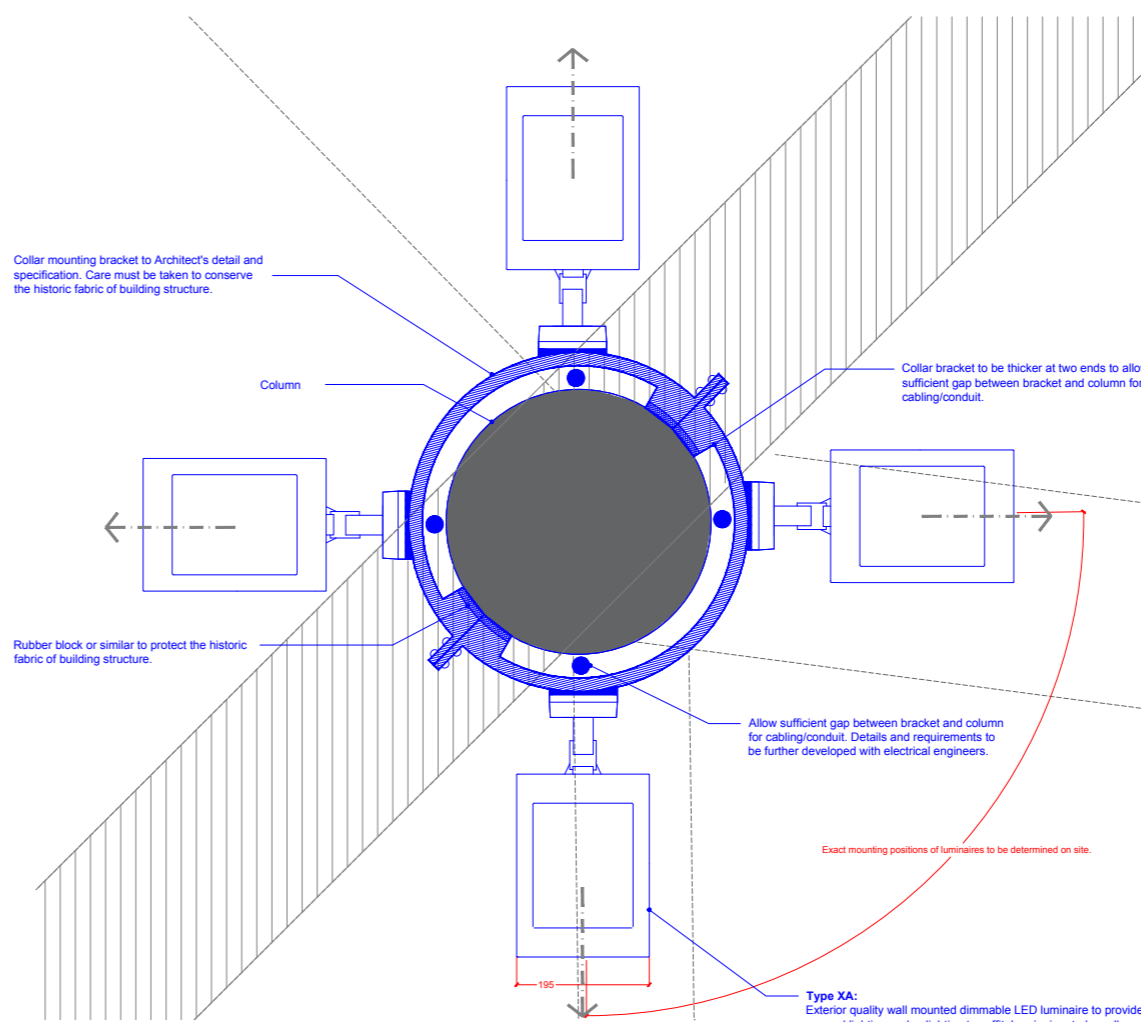
02 Yard Level Part Elevation  
Scale 1:25 @ A1



01 Indicative Sketch - Collar mounting bracket  
NTS



03 Detail - Type XA  
Scale 1:5 @ A1



04 Detail - Type XA  
Scale 1:5 @ A1

**Notes:**

Do not scale off this drawing.

All drawings to be read in conjunction with all other relevant documents, including drawings and specifications.

All works to be carried out in accordance with such Standards, Building and IEE regulations, mandatory and statutory regulations and codes of practice as are deemed to apply in the relevant country or state.

Refer to Speirs+Major Lighting Designer's Risk Assessment for associated risks under the construction (Design and Management) Regulations (where applicable).

**Symbol Notes (where used):**

Symbols indicate positions of luminaires and other equipment.

The alphanumeric reference beside each symbol refers to luminaire type - see relevant Speirs+Major Lighting Equipment Specification.

The numeric code beside each symbol refers to a logical control channel reference (NOT the same as a physical wiring circuit). For details of logical channels see relevant Speirs+Major Control Channel Schedule. For details of wiring circuits, etc. see relevant engineers' drawings.

**Copyright:**

© Speirs and Major Associates, date as below. Under UK law, all rights described in Chapter 4 of the Copyrights Designs and Patents Act 1988 have been generally asserted.

**IMPORTANT:**

**THIS DRAWING IS NOT TO BE ISSUED FOR TENDER OR CONSTRUCTION. IF THIS DRAWING IS ISSUED TO CONTRACTORS, IT IS FOR INFORMATION ONLY. ARCHITECTS' AND ENGINEERS' DRAWINGS MUST BE USED AS THE BASIS FOR TENDER AND CONSTRUCTION.**

01	07/10/15	HT	Stage 3 issue
00	04/09/15	JF	Preliminary issue

Rev.	Date	By	Notes
------	------	----	-------

**Project:**  
Coal Drops Yard, King's Cross  
London, UK

**Drawing:**  
WCD Yard Level Columns: 8 head luminaire mounting  
Typical Lighting Detail

<b>Drawing Number:</b> KXC-M0-001-S+M10793-J-63-5003	<b>Rev.</b> 01
---------------------------------------------------------	-------------------

**Scale:** As shown ISO: A1

**SPEIRS + MAJOR**

London: Tel +44 (0)20 7067 4700 Fax +44 (0)20 7067 4701  
Edinburgh: Tel +44 (0)131 226 4474 Fax +44 (0)131 220 5331  
www.speirsandmajor.com

NOTE:  
ALL WIRING, CONDUITS, CONTAINMENT ROUTES ETC. TO ELECTRICAL ENGINEER'S DRAWINGS, DETAILS AND SPECIFICATION.  
ALL ASSOCIATED FIXINGS, MOUNTING AND BRACKETRY TO ARCHITECT'S DRAWINGS, DETAILS AND SPECIFICATION.  
REFER TO ARCHITECT'S CONSTRUCTION DRAWINGS FOR FINAL SETTING OUT OF LIGHTING EQUIPMENT.

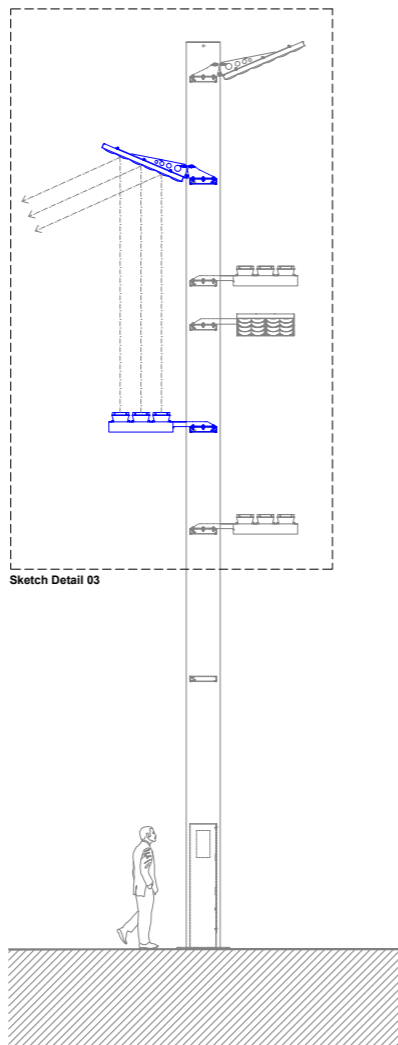
New secondary reflector system to be added on to existing Granary Square mast. Dimensions and finish to match that of existing system on opposite side of mast.

New luminaires to be added on to existing Granary Square mast. Details to match that of existing system on opposite side of mast.

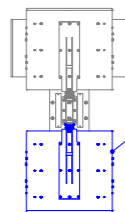
Approx. 4m

Approx. 7.5m

01 Front Elevation - Type XN  
Scale 1:50 @ A1

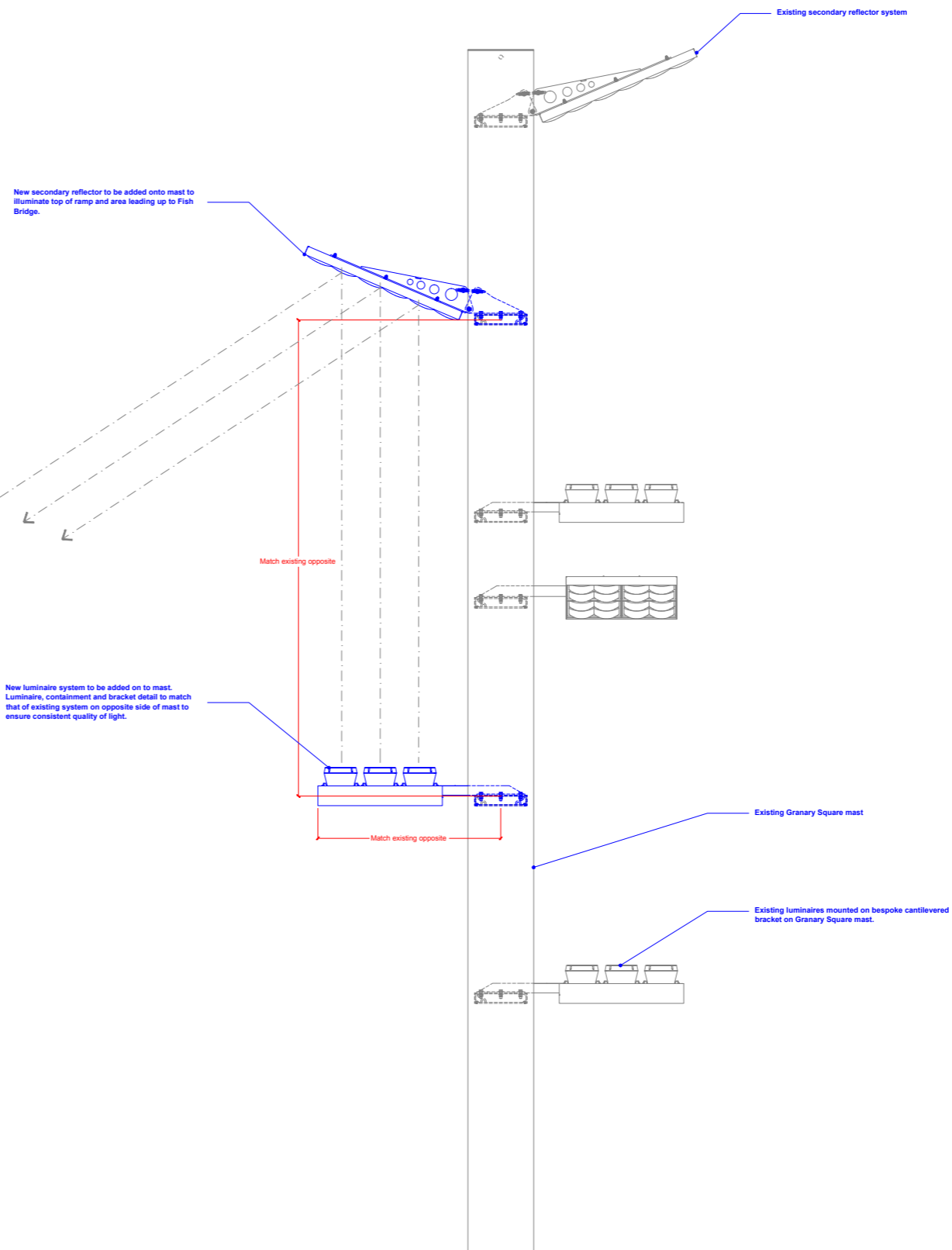


02 Side Elevation - Type XN  
Scale 1:50 @ A1



**Type XN:**  
Exterior quality secondary reflector indirect lighting system to be added on to the back of existing lighting mast at western corner of Granary Square to provide general lighting to top of ramp and area leading up to Fish Bridge. Structural feasibility study and coordination with existing lighting mast required. All details to be developed and confirmed by contractor to Client and Design Team's approval prior to construction. Refer to Speirs + Major's Lighting Equipment Specification KXC-M0-001-S+M10793-J-63-850 for details.

01 Plan - Type XN  
Scale 1:50 @ A1



03 Sketch Detail - Type XN  
Scale 1:20 @ A1

**Notes:**

Do not scale off this drawing.

All drawings to be read in conjunction with all other relevant documents, including drawings and specifications.

All works to be carried out in accordance with such Standards, Building and IEE regulations, mandatory and statutory regulations and codes of practice as are deemed to apply in the relevant country or state.

Refer to Speirs+Major Lighting Designer's Risk Assessment for associated risks under the construction (Design and Management) Regulations (where applicable).

**Symbol Notes (where used):**

Symbols indicate positions of luminaires and other equipment.

The alphanumeric reference beside each symbol refers to luminaire type - see relevant Speirs+Major Lighting Equipment Specification.

The numeric code beside each symbol refers to a logical control channel reference (NOT the same as a physical wiring circuit). For details of logical channels see relevant Speirs+Major Control Channel Schedule. For details of wiring circuits, etc, see relevant engineers' drawings.

**Copyright:**

© Speirs and Major Associates, date as below. Under UK law, all rights described in Chapter 4 of the Copyrights Designs and Patents Act 1988 have been generally asserted.

**IMPORTANT:**

**THIS DRAWING IS NOT TO BE ISSUED FOR TENDER OR CONSTRUCTION. IF THIS DRAWING IS ISSUED TO CONTRACTORS, IT IS FOR INFORMATION ONLY - ARCHITECTS' AND ENGINEERS' DRAWINGS MUST BE USED AS THE BASIS FOR TENDER AND CONSTRUCTION.**

00 07/10/15 JF Stage 3 issue

Rev.	Date	By	Notes
00	07/10/15	JF	Stage 3 issue

**Project:**  
Coal Drops Yard, King's Cross  
London, UK

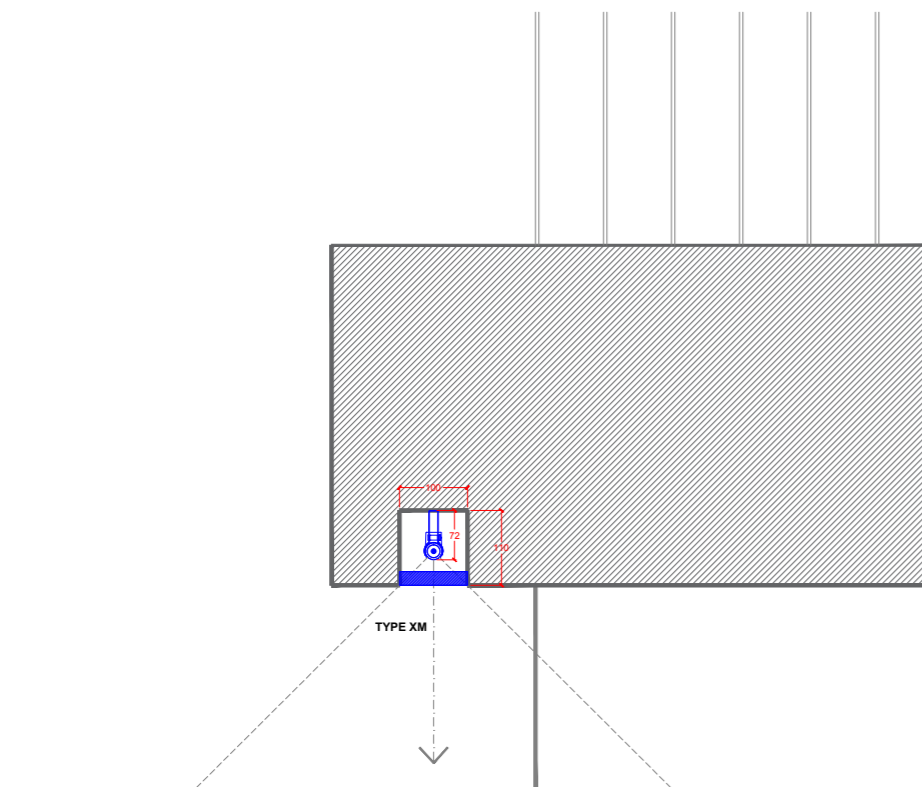
**Drawing:**  
Existing Granary Square Mast  
Indicative Lighting Detail Sketch

Drawing Number:	Rev.
KXC-M0-001-S+M10793-J-63-5004	00

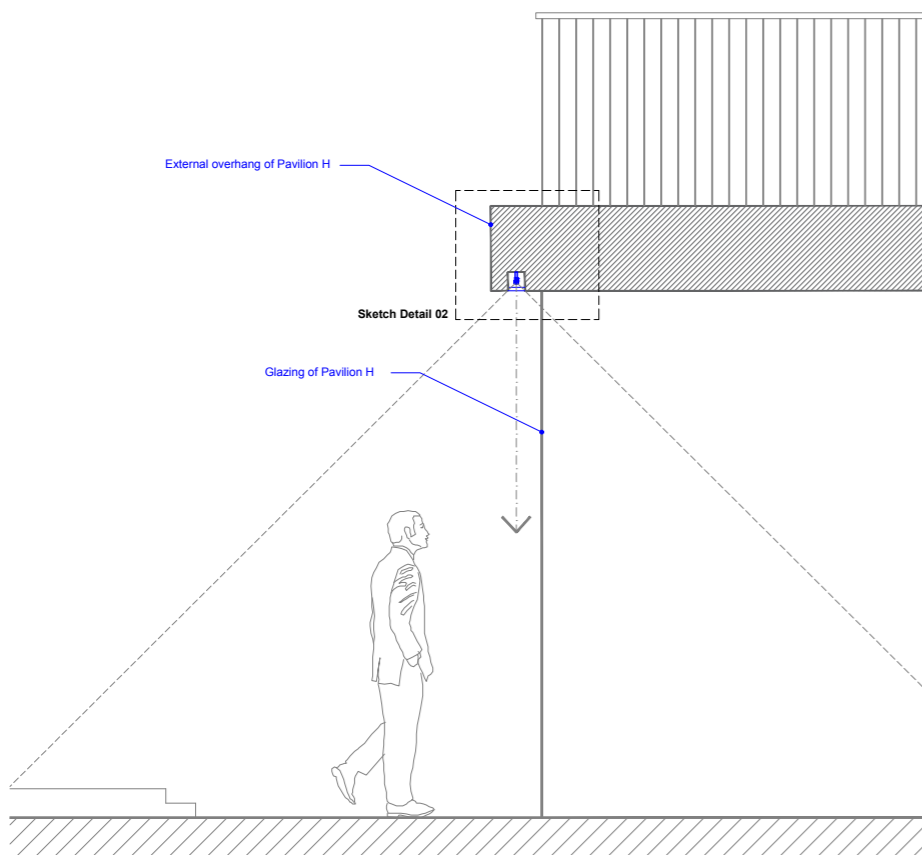
Scale: As shown ISO: A1



NOTE:  
ALL WIRING, CONDUITS, CONTAINMENT ROUTES ETC. TO ELECTRICAL ENGINEER'S DRAWINGS, DETAILS AND SPECIFICATION.  
ALL ASSOCIATED FIXINGS, MOUNTING AND BRACKETRY TO ARCHITECT'S DRAWINGS, DETAILS AND SPECIFICATION.  
REFER TO ARCHITECT'S CONSTRUCTION DRAWINGS FOR FINAL SETTING OUT OF LIGHTING EQUIPMENT.



02 Sketch Detail - Pavilion H overhang  
Scale 1:5 @ A1



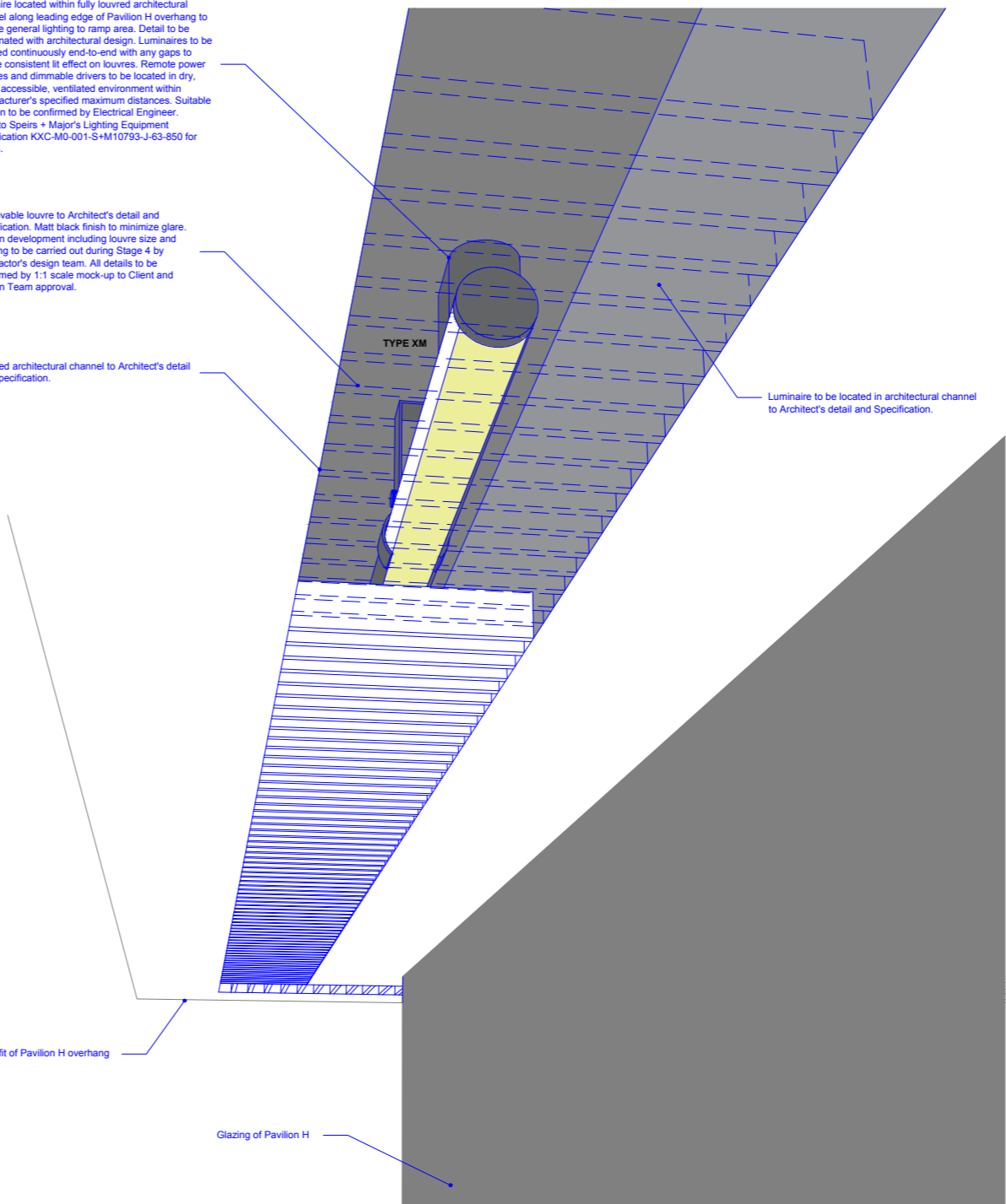
01 Sketch section - Pavilion H overhang  
Scale 1:20 @ A1

NOTE:  
ALL WIRING, CONDUITS, CONTAINMENT ROUTES ETC. TO ELECTRICAL ENGINEER'S DRAWINGS, DETAILS AND SPECIFICATION.  
ALL ASSOCIATED FIXINGS, MOUNTING AND BRACKETRY TO ARCHITECT'S DRAWINGS, DETAILS AND SPECIFICATION.  
REFER TO ARCHITECT'S CONSTRUCTION DRAWINGS FOR FINAL SETTING OUT OF LIGHTING EQUIPMENT.

**Type XM:**  
Exterior quality surface mounted dimmable LED luminaire located within fully louvred architectural channel along leading edge of Pavilion H overhang to provide general lighting to ramp area. Detail to be coordinated with architectural design. Luminaires to be installed continuously end-to-end with any gaps to ensure consistent light effect on louvres. Remote power supplies and dimmable drivers to be located in dry, clean, accessible, ventilated environment within manufacturer's specified maximum distances. Suitable location to be confirmed by Electrical Engineer. Refer to Speirs + Major's Lighting Equipment Specification KXC-M0-001-S+M10793-J-63-850 for details.

Removable louvre to Architect's detail and specification. Matt black finish to minimize glare. Design development including louvre size and spacing to be carried out during Stage 4 by Contractor's design team. All details to be confirmed by 1:1 scale mock-up to Client and Design Team approval.

Louvred architectural channel to Architect's detail and specification.



03 3D Sketch - Type XM  
Scale N/A @ A1

**Notes:**  
Do not scale off this drawing.  
All drawings to be read in conjunction with all other relevant documents, including drawings and specifications.  
All works to be carried out in accordance with such Standards, Building and IEE regulations, mandatory and statutory regulations and codes of practice as are deemed to apply in the relevant country or state.  
Refer to Speirs+Major Lighting Designer's Risk Assessment for associated risks under the construction (Design and Management) Regulations (where applicable).

**Symbol Notes (where used):**  
Symbols indicate positions of luminaires and other equipment.  
The alphanumeric reference beside each symbol refers to luminaire type - see relevant Speirs+Major Lighting Equipment Specification.  
The numeric code beside each symbol refers to a logical control channel reference (NOT the same as a physical wiring circuit). For details of logical channels see relevant Speirs+Major Control Channel Schedule. For details of wiring circuits, etc, see relevant engineers' drawings.

**Copyright:**  
© Speirs and Major Associates, date as below. Under UK law, all rights described in Chapter 4 of the Copyrights Designs and Patents Act 1988 have been generally asserted.

**IMPORTANT:**  
THIS DRAWING IS NOT TO BE ISSUED FOR TENDER OR CONSTRUCTION. IF THIS DRAWING IS ISSUED TO CONTRACTORS, IT IS FOR INFORMATION ONLY. ARCHITECTS' AND ENGINEERS' DRAWINGS MUST BE USED AS THE BASIS FOR TENDER AND CONSTRUCTION.

00 07/10/15 HT Stage 3 issue

Rev.	Date	By	Notes

**Project:**  
Coal Drops Yard, King's Cross  
London, UK

**Drawing:**  
Pavilion H  
Indicative Lighting Integration Sketch

<b>Drawing Number:</b> KXC-M0-001-S+M10793-J-63-5005	<b>Rev.</b> 00
---------------------------------------------------------	-------------------

**Scale:** As shown **ISO:** A1



**Type XH:**  
Exterior quality inground LED uplight to provide soft light to heritage arch reveals. Refer to Speirs + Major's Lighting Equipment Specification KXC-M0-001-S+M10793-J-63-850 for details.

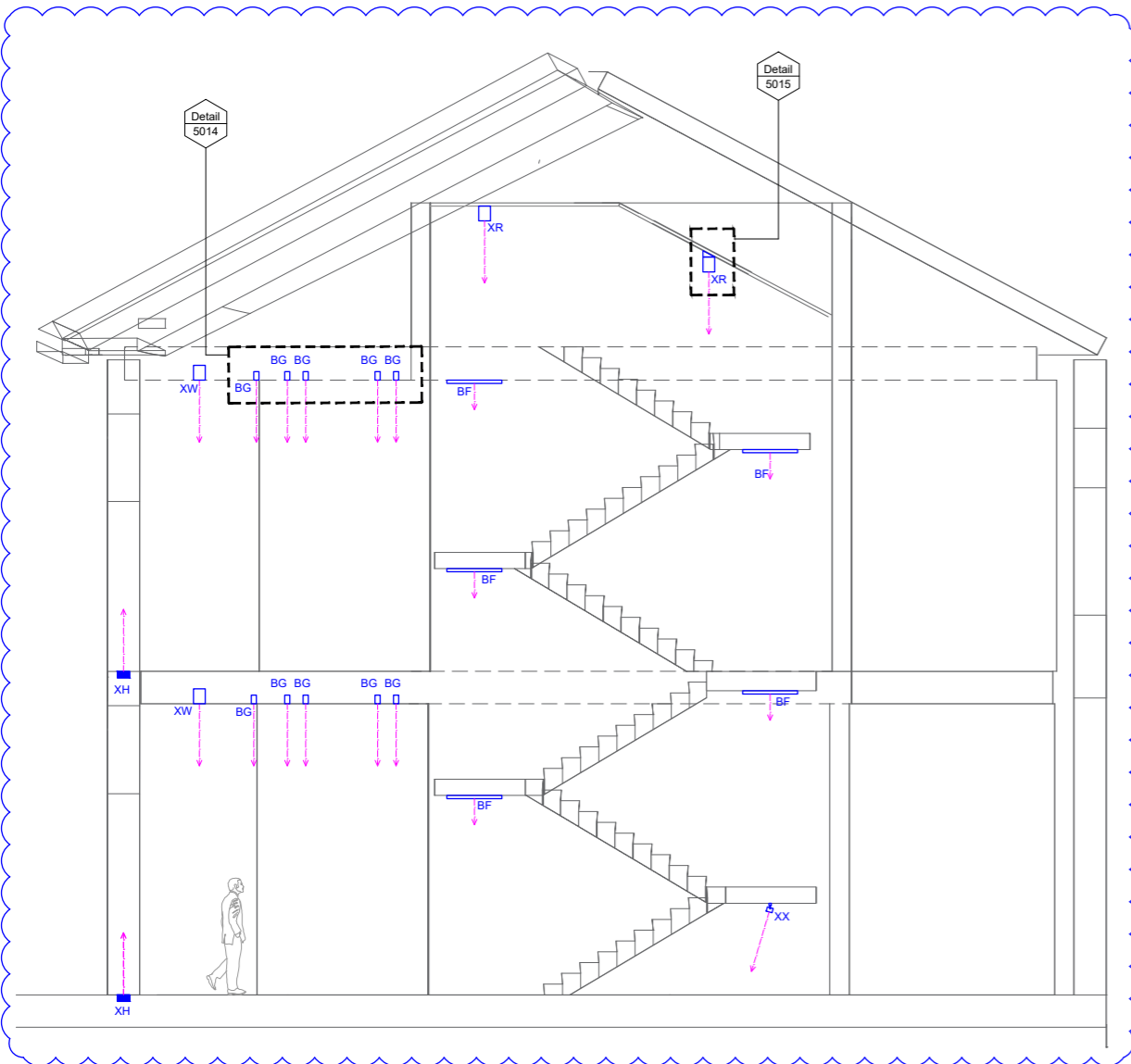
**Type XR:**  
Exterior quality dimmable LED ceiling mounted luminaire to provide general lighting on top stairs.  
Refer to Speirs + Major's Lighting Equipment Specification KXC-M0-001-S+M10793-J-63-850 for details.

**Type XW:**  
Exterior quality surface mounted luminaire to provide general lighting.  
Refer to Speirs + Major's Lighting Equipment Specification KXC-M0-001-S+M10793-J-63-850 for details.

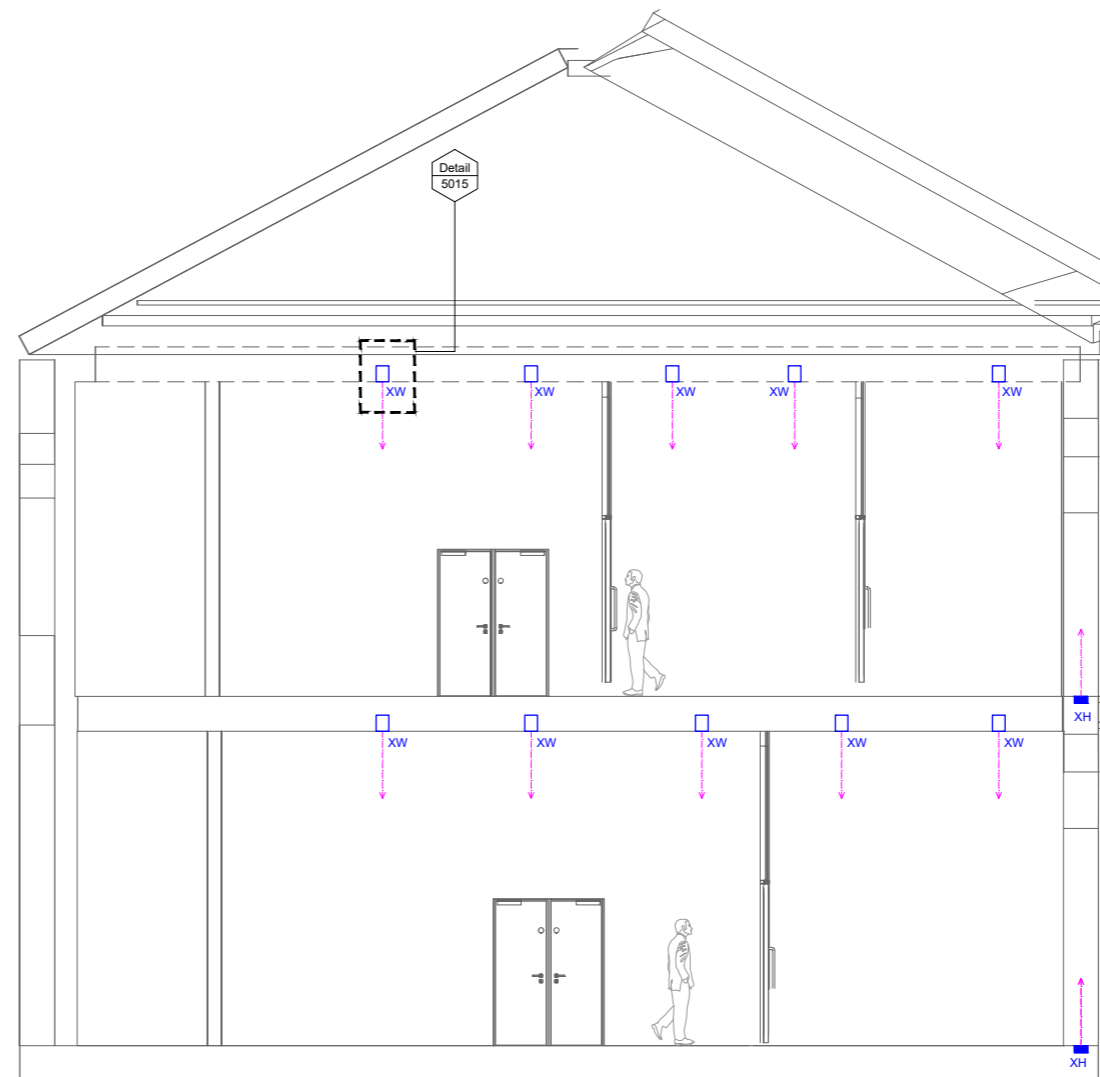
**Type XX:**  
Interior quality track mounted LED spotlights to provide display lighting below stair landing on Yard level.  
Refer to Speirs + Major's Lighting Equipment Specification KXC-M0-001-S+M10793-J-63-850 for details.

**Type BG:**  
Interior quality surface mounted LED downlight to illuminate metal mesh cladding around lift core.  
Refer to Speirs + Major's Lighting Equipment Specification KXC-M0-001-S+M10793-J-63-850 for details.

**Type BF:**  
Interior quality surface mounted LED downlight to provide general lighting to stairs.  
Refer to Speirs + Major's Lighting Equipment Specification KXC-M0-001-S+M10793-J-63-850 for details.



01 Core 1 - Section Looking South  
Scale 1:50 @ A1



02 Core 1 - Section Looking North  
Scale 1:50 @ A1

**Notes:**  
Do not scale off this drawing.

All drawings to be read in conjunction with all other relevant documents, including drawings and specifications.

All works to be carried out in accordance with such Standards, Building and IEE regulations, mandatory and statutory regulations and codes of practice as are deemed to apply in the relevant country or state.

Refer to Speirs+Major Lighting Designer's Risk Assessment for associated risks under the construction (Design and Management) Regulations (where applicable).

**Symbol Notes (where used):**

Symbols indicate positions of luminaires and other equipment.

The alphanumeric reference beside each symbol refers to luminaire type - see relevant Speirs+Major Lighting Equipment Specification.

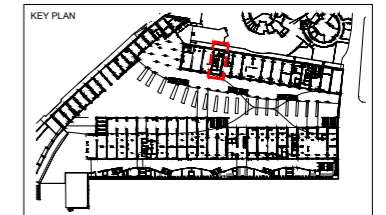
The numeric code beside each symbol refers to a logical control channel reference (NOT the same as a physical wiring circuit). For details of logical channels see relevant Speirs+Major Control Channel Schedule. For details of wiring circuits, etc. see relevant engineers' drawings.

**Copyright:**

© Speirs and Major Associates, date as below. Under UK law, all rights described in Chapter 4 of the Copyrights Designs and Patents Act 1988 have been generally asserted.

**IMPORTANT:**

THIS DRAWING IS NOT TO BE ISSUED FOR TENDER OR CONSTRUCTION. IF THIS DRAWING IS ISSUED TO CONTRACTORS, IT IS FOR INFORMATION ONLY - ARCHITECTS' AND ENGINEERS' DRAWINGS MUST BE USED AS THE BASIS FOR TENDER AND CONSTRUCTION.



02	31/05/16	JF	Stage 3 update
01	29/02/16	TJ	Stage 3 update
00	07/10/15	TJ	Stage 3 issue

Rev.	Date	By	Notes
------	------	----	-------

**Project:**  
Coal Drops Yard, King's Cross  
London, UK

**Drawing:**  
Core 1  
Sections

**Drawing Number:** KXC-M0-001-S+M10793-J-63-5006  
**Rev.** 02

**Scale:** 1:50 **ISO:** A1

**NOTE:**  
ALL WIRING, CONDUITS, CONTAINMENT ROUTES ETC. TO ELECTRICAL ENGINEER'S DRAWINGS, DETAILS AND SPECIFICATION.  
ALL ASSOCIATED FIXINGS, MOUNTING AND BRACKETRY TO ARCHITECT'S DRAWINGS, DETAILS AND SPECIFICATION.  
REFER TO ARCHITECT'S CONSTRUCTION DRAWINGS FOR FINAL SETTING OUT OF LIGHTING EQUIPMENT.

**SPEIRS + MAJOR**  
London: Tel +44 (0)20 7067 4700 Fax +44 (0)20 7067 4701  
Edinburgh: Tel +44 (0)131 226 4474 Fax +44 (0)131 220 5331  
www.speirsandmajor.com



**Type XH:**  
Exterior quality inground LED uplight to provide soft light to heritage arch reveals. Refer to Speirs + Major's Lighting Equipment Specification KXC-M0-001-S+M10793-J-63-850 for details.

**Type XR:**  
Exterior quality dimmable LED ceiling mounted luminaire to provide general lighting on top stairs. Refer to Speirs + Major's Lighting Equipment Specification KXC-M0-001-S+M10793-J-63-850 for details.

**Type XW:**  
Exterior quality surface mounted luminaire to provide general lighting. Refer to Speirs + Major's Lighting Equipment Specification KXC-M0-001-S+M10793-J-63-850 for details.

**Type XX:**  
Interior quality track mounted LED spotlights to provide display lighting below stair landing on Yard level. Refer to Speirs + Major's Lighting Equipment Specification KXC-M0-001-S+M10793-J-63-850 for details.

**Type BG:**  
Interior quality surface mounted LED downlight to illuminate metal mesh cladding around lift core. Refer to Speirs + Major's Lighting Equipment Specification KXC-M0-001-S+M10793-J-63-850 for details.

**Type BF:**  
Interior quality surface mounted LED downlight to provide general lighting to stairs. Refer to Speirs + Major's Lighting Equipment Specification KXC-M0-001-S+M10793-J-63-850 for details.

**Notes:**

Do not scale off this drawing.

All drawings to be read in conjunction with all other relevant documents, including drawings and specifications.

All works to be carried out in accordance with such Standards, Building and IEE regulations, mandatory and statutory regulations and codes of practice as are deemed to apply in the relevant country or state.

Refer to Speirs+Major Lighting Designer's Risk Assessment for associated risks under the construction (Design and Management) Regulations (where applicable).

**Symbol Notes (where used):**

Symbols indicate positions of luminaires and other equipment.

The alphanumeric reference beside each symbol refers to luminaire type - see relevant Speirs+Major Lighting Equipment Specification.

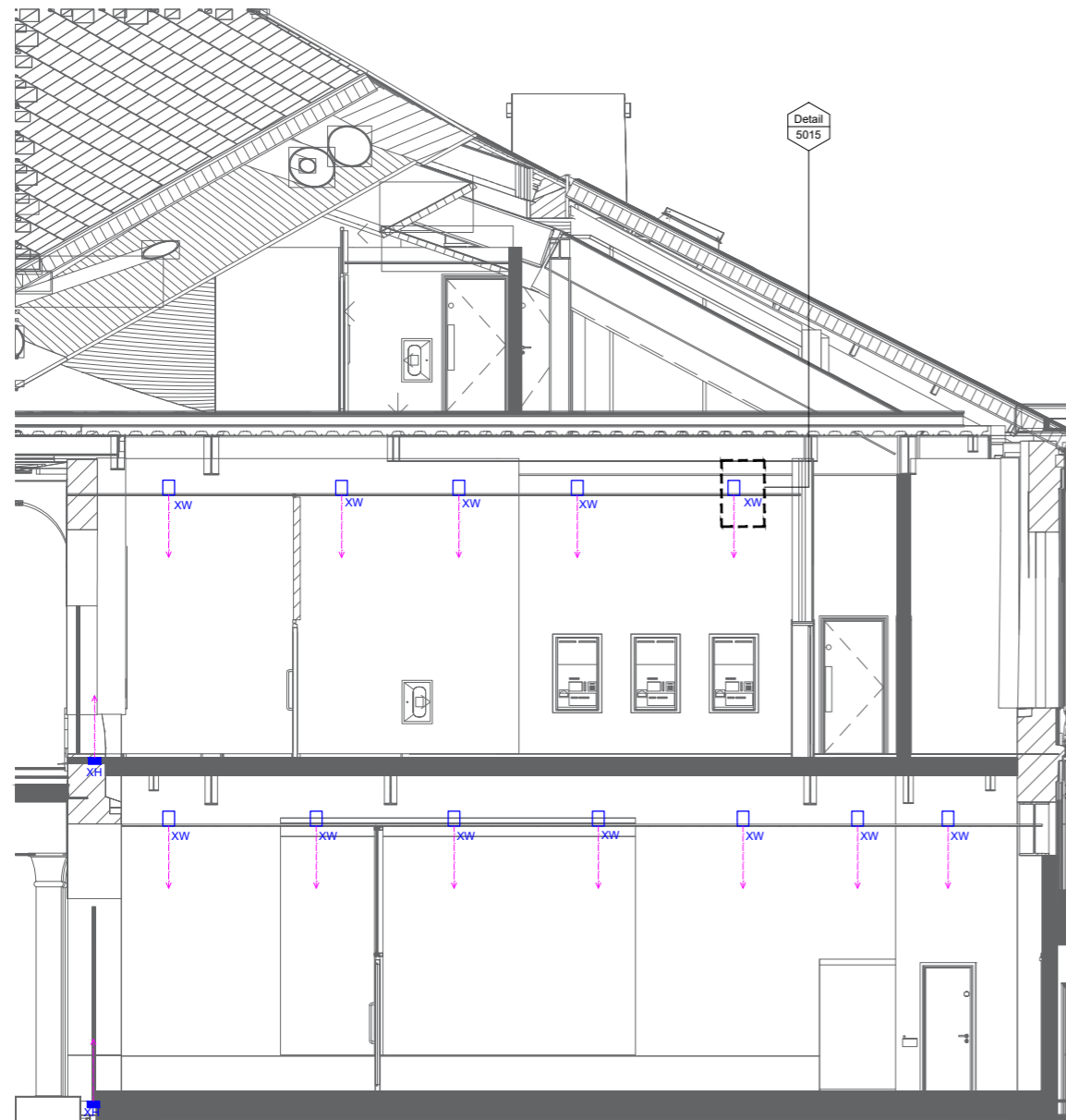
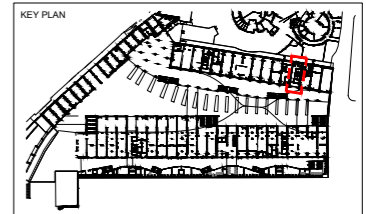
The numeric code beside each symbol refers to a logical control channel reference (NOT the same as a physical wiring circuit). For details of logical channels see relevant Speirs+Major Control Channel Schedule. For details of wiring circuits, etc, see relevant engineers' drawings.

**Copyright:**

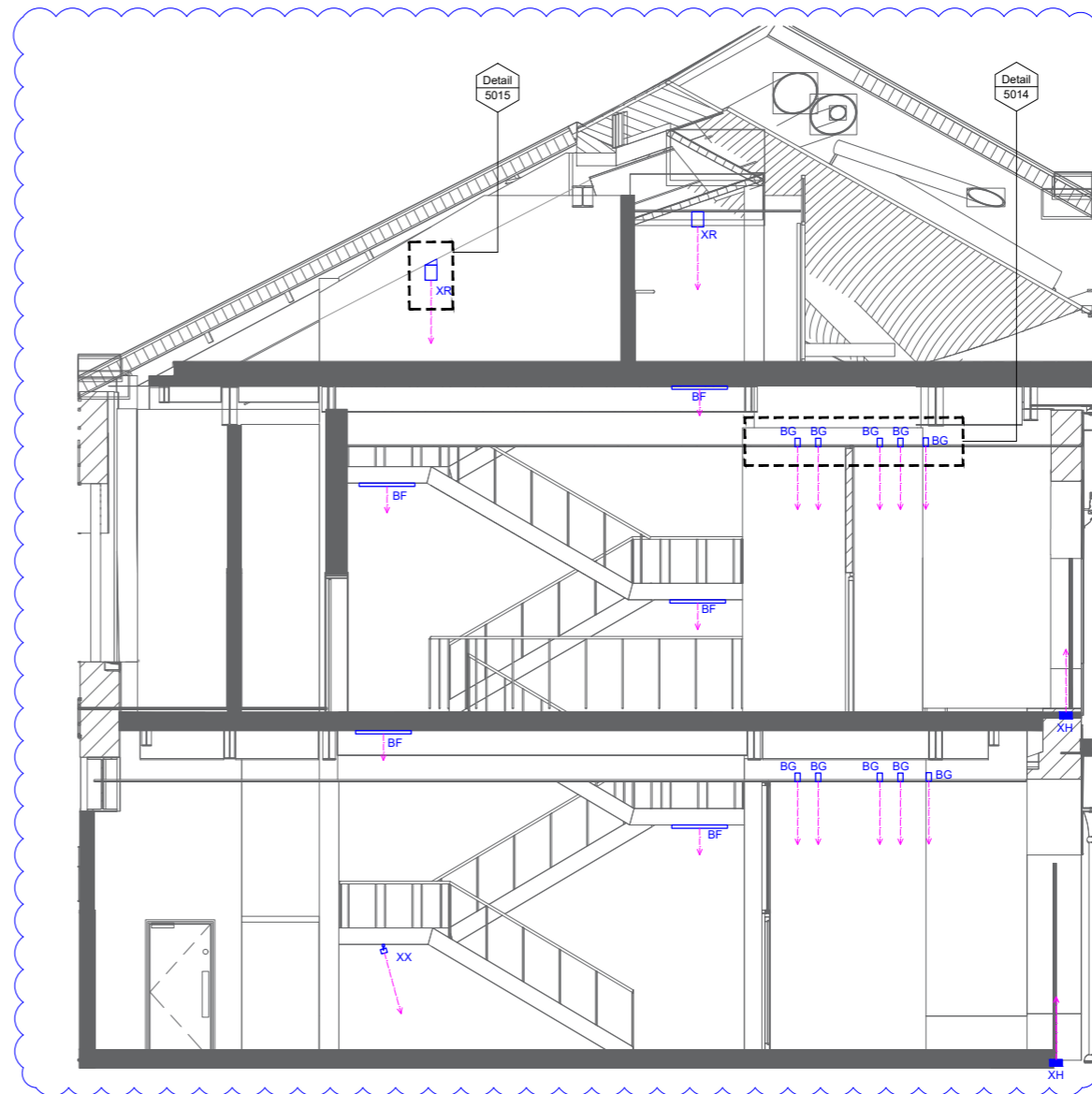
© Speirs and Major Associates, date as below. Under UK law, all rights described in Chapter 4 of the Copyrights Designs and Patents Act 1988 have been generally asserted.

**IMPORTANT:**

**THIS DRAWING IS NOT TO BE ISSUED FOR TENDER OR CONSTRUCTION. IF THIS DRAWING IS ISSUED TO CONTRACTORS, IT IS FOR INFORMATION ONLY - ARCHITECTS' AND ENGINEERS' DRAWINGS MUST BE USED AS THE BASIS FOR TENDER AND CONSTRUCTION.**



**01** Core 2 - Section Looking South  
Scale 1:50 @ A1



**02** Core 2 - Section Looking North  
Scale 1:50 @ A1

NOTE:  
ALL WIRING, CONDUITS, CONTAINMENT ROUTES ETC. TO ELECTRICAL ENGINEER'S DRAWINGS, DETAILS AND SPECIFICATION.  
ALL ASSOCIATED FIXINGS, MOUNTING AND BRACKETRY TO ARCHITECT'S DRAWINGS, DETAILS AND SPECIFICATION.  
REFER TO ARCHITECT'S CONSTRUCTION DRAWINGS FOR FINAL SETTING OUT OF LIGHTING EQUIPMENT.

02	31/05/16	JF	Stage 3 Update
01	29/02/16	TJ	Stage 3 Update
00	07/10/15	TJ	Stage 3 issue

Rev.	Date	By	Notes
------	------	----	-------

**Project:**  
Coal Drops Yard, King's Cross  
London, UK

**Drawing:**  
Core 2  
Sections

**Drawing Number:** KXC-M0-001-S+M10793-J-63-5007  
**Rev.:** 02

**Scale:** 1:50  
**ISO:** A1

**SPEIRS + MAJOR**  
London: Tel +44 (0)20 7067 4700 Fax +44 (0)20 7067 4701  
Edinburgh: Tel +44 (0)131 226 4474 Fax +44 (0)131 220 5331  
www.speirsandmajor.com