

**Type XK:**  
Exterior quality column mounted dimmable LED luminaire to provide general lighting. Lighting system including the column to match that of public realm lighting as part of Townsend Landscape Architects' scheme around Triquetri. Lighting proposals to be coordinated with existing Public Realm Lighting schemes around CDY and Triquetri Park by House Lea.  
Refer to Speirs + Major's Lighting Equipment Specification KXC-MO-001-S-M10793-J43-450 for details.

**Type XB:**  
Exterior quality wall mounted dimmable LED bulkhead luminaire to illuminate area outside WCD gate end anchor steel tower footings. Luminaire to provide diffuse light to provide general lighting and general lighting to brick wall. Care must be taken to conserve the historic fabric of building. Coudulcabling arrangement, detail and specification to be developed by Electrical Engineer to Architect's approval.  
Refer to Speirs + Major's Lighting Equipment Specification KXC-MO-001-S-M10793-J43-450 for details.

**Type XH:**  
Exterior quality inground LED light to provide soft light to heritage arch reveals. Coudulcabling arrangement, detail and specification to be developed by Electrical Engineer to Architect's approval.  
Refer to Speirs + Major's Lighting Equipment Specification KXC-MO-001-S-M10793-J43-450 for details.

Recommended grid of exterior quality power outlets to be provided for WCD gate end anchor steel tower footings. All details and specification to be confirmed by Electrical Engineer.

**Type XS:**  
Interior quality linear LED light to be integrated into feature core stair treads. Coudulcabling arrangement, detail and specification to be developed by Electrical Engineer to Architect's approval. Refer to Speirs + Major's Lighting Equipment Specification KXC-MO-001-S-M10793-J43-450 for details.

**Type BA:**  
Exterior quality inground LED marker for feature core staircase landing. Coudulcabling arrangement, detail and specification to be developed by Electrical Engineer to Architect's approval. Refer to Speirs + Major's Lighting Equipment Specification KXC-MO-001-S-M10793-J43-450 for details.

**Type XH:**  
Exterior quality floor recessed dimmable LED luminaire to provide uplighting to trees. Installation details to be coordinated with landscape design. Suitable luminaire position depends on tree specimen and foliage. Optimum mounting position to be confirmed by landscape.  
Refer to Speirs + Major's Lighting Equipment Specification KXC-MO-001-S-M10793-J43-450 for details.

**Type XJ:**  
Exterior quality non-linear point source dimmable LED luminaire integrated into handrail to provide general lighting to stairs and bridges. Lighting detail to be coordinated with handrail design. Remote dimmable driver to be located in dry, clean, accessible, ventilated environment within manufacturer's specified maximum distances. Suitable location to be confirmed by Electrical Engineer.  
Refer to Speirs + Major's Lighting Equipment Specification KXC-MO-001-S-M10793-J43-450 for details.

**Notes:**  
Do not scale off this drawing.  
All drawings to be read in conjunction with all other relevant documents, including drawings and specifications.  
All works to be carried out in accordance with such Standards, Building and IEE regulations, mandatory and statutory regulations and codes of practice as are deemed to apply in the relevant country or state.  
Refer to Speirs+Major Lighting Designer's Risk Assessment for associated risks under the construction (Design and Management) Regulations (where applicable).

**Symbol Notes (where used):**  
Symbols indicate positions of luminaires and other equipment.  
The alphanumeric reference beside each symbol refers to luminaire type - see relevant Speirs+Major Lighting Equipment Specification.  
The numeric code beside each symbol refers to a logical control channel reference (NOT the same as a physical wiring circuit). For details of logical channels see relevant Speirs+Major Control Channel Schedule. For details of wiring circuits, etc. see relevant engineers' drawings.

**Copyright:**  
© Speirs and Major Associates, date as below. Under UK law, all rights described in Chapter 4 of the Copyrights Designs and Patents Act 1988 have been generally assigned.

**IMPORTANT:**  
THIS DRAWING IS NOT TO BE ISSUED FOR TENDER OR CONSTRUCTION. IF THIS DRAWING IS ISSUED TO CONTRACTORS, IT IS FOR INFORMATION ONLY. ARCHITECTS' AND ENGINEERS' DRAWINGS MUST BE USED AS THE BASIS FOR TENDER AND CONSTRUCTION.

NOTE:  
ALL WIRING, CONDUITS, CONTAINMENT ROUTES ETC. TO ELECTRICAL ENGINEER'S DRAWINGS, DETAILS AND SPECIFICATION.  
ALL ASSOCIATED FIXINGS, MOUNTING AND BRACKETRY TO ARCHITECT'S DRAWINGS, DETAILS AND SPECIFICATION.  
REFER TO ARCHITECT'S CONSTRUCTION DRAWINGS FOR FINAL SETTING OUT OF LIGHTING EQUIPMENT.

Rev.	Date	By	Notes
00	29/02/16	TJ	Stage 3 update

Project:  
Coal Drops Yard, King's Cross  
London, UK

Drawing:  
Visual Level  
Low Level Lighting Arrangement

Drawing Number: KXC-MO-001-S-M10793-J43-GF001 Rev. 00  
Scale: 1:200 BO:AO



**Type XP:**  
Exterior quality surface mounted dimmable LED luminaire to provide general lighting to ramp leading down towards Triplets. Lighting proposals to be coordinated with interfacing Public Realm lighting schemes around CDY and Triplets Park by Heare Lea. SHM recommends reducing the number of luminaires from 15no. down to 9no as indicated. Heare Lea to review SHM proposal and confirm design as part of Triplets Park lighting scheme. Care must be taken to conserve the historic fabric of building. Cabling/ducting arrangement, detail and specification to be developed by Electrical Engineer to Architect's approval. Refer to Speirs + Major's Lighting Equipment Specification KXC-M0-001-S-M10793-J-63-850 for details.

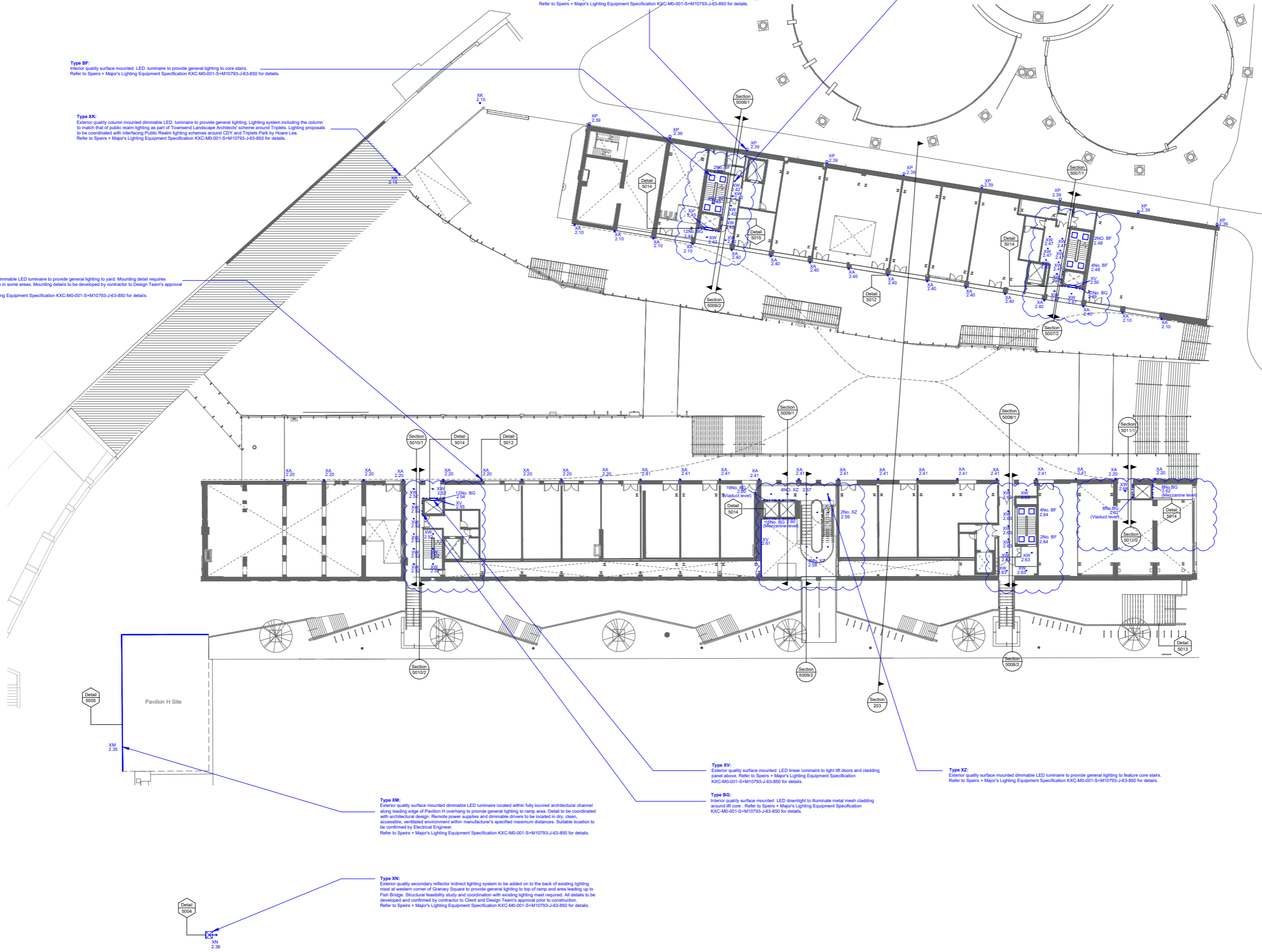
**Type XV:**  
Interior quality surface mounted LED downlight to provide general lighting to cores. Refer to Speirs + Major's Lighting Equipment Specification KXC-M0-001-S-M10793-J-63-850 for details.

**Type BF:**  
Interior quality surface mounted LED luminaire to provide general lighting to core stairs. Refer to Speirs + Major's Lighting Equipment Specification KXC-M0-001-S-M10793-J-63-850 for details.

**Type XK:**  
Exterior quality column mounted dimmable LED luminaire to provide general lighting. Lighting system including the column to match that of public realm lighting as part of Townsend Landscape Architects' scheme around Triplets. Lighting proposals to be coordinated with interfacing Public Realm lighting schemes around CDY and Triplets Park by Heare Lea. Refer to Speirs + Major's Lighting Equipment Specification KXC-M0-001-S-M10793-J-63-850 for details.

**Type XA:**  
Exterior quality wall mounted dimmable LED luminaire to provide general lighting to yard. Mounting detail requires coordination with change pipe in some areas. Mounting details to be developed by contractor to Design Team's approval prior to construction. Refer to Speirs + Major's Lighting Equipment Specification KXC-M0-001-S-M10793-J-63-850 for details.

**Notes:**  
Do not scale off this drawing.  
All drawings to be read in conjunction with all other relevant documents, including drawings and specifications.  
All works to be carried out in accordance with such Standards, Building and IEE regulations, mandatory and statutory regulations and codes of practice as are deemed to apply in the relevant country or state.  
Refer to Speirs+Major Lighting Designer's Risk Assessment for associated risks under the construction (Design and Management) Regulations (where applicable).  
**Symbol Notes (where used):**  
Symbols indicate positions of luminaires and other equipment.  
The alphanumeric reference beside each symbol refers to luminaire type - see relevant Speirs+Major Lighting Equipment Specification.  
The numeric code beside each symbol refers to a logical control channel reference (NOT the same as a physical wiring circuit). For details of logical channels see relevant Speirs+Major Control Channel Schedule. For details of wiring circuits, etc. see relevant engineers' drawings.  
**Copyright:**  
© Speirs and Major Associates, date as below. Under UK law, all rights described in Chapter 4 of the Copyrights Designs and Patents Act 1988 have been generally asserted.  
**IMPORTANT:**  
**THIS DRAWING IS NOT TO BE ISSUED FOR TENDER OR CONSTRUCTION IF THIS DRAWING IS ISSUED TO CONTRACTORS. IT IS FOR INFORMATION ONLY - ARCHITECTS' AND ENGINEERS' DRAWINGS MUST BE USED AS THE BASIS FOR TENDER AND CONSTRUCTION.**



**Type XM:**  
Exterior quality surface mounted dimmable LED luminaire located within fully louvred architectural channel along leading edge of Pavilion H overhang to provide general lighting to ramp area. Detail to be coordinated with architectural design. Remote power supplies and dimmable drivers to be located in dry, clean, accessible, ventilated environment within manufacturer's specified maximum distances. Suitable location to be confirmed by Electrical Engineer. Refer to Speirs + Major's Lighting Equipment Specification KXC-M0-001-S-M10793-J-63-850 for details.

**Type XN:**  
Exterior quality secondary reflector indirect lighting system to be added on to the back of existing lighting mast at western corner of Greeny Square to provide general lighting to top of ramp and area leading up to Fish Bridge. Structural feasibility study and coordination with existing lighting mast required. All details to be developed and confirmed by contractor to Client and Design Team's approval prior to construction. Refer to Speirs + Major's Lighting Equipment Specification KXC-M0-001-S-M10793-J-63-850 for details.

**Type XV:**  
Exterior quality surface mounted LED linear luminaire to light lift doors and cladding panel above. Refer to Speirs + Major's Lighting Equipment Specification KXC-M0-001-S-M10793-J-63-850 for details.

**Type BG:**  
Interior quality surface mounted LED downlight to illuminate metal mesh cladding around lift core. Refer to Speirs + Major's Lighting Equipment Specification KXC-M0-001-S-M10793-J-63-850 for details.

**Type XZ:**  
Exterior quality surface mounted dimmable LED luminaire to provide general lighting to feature core stairs. Refer to Speirs + Major's Lighting Equipment Specification KXC-M0-001-S-M10793-J-63-850 for details.

**NOTE:**  
ALL WIRING, CONDUITS, CONTAMINANT ROUTES ETC. TO ELECTRICAL ENGINEERS DRAWINGS, DETAILS AND SPECIFICATION.  
ALL ASSOCIATED FIXINGS, MOUNTING AND BRACKETRY TO ARCHITECT'S DRAWINGS, DETAILS AND SPECIFICATION.  
REFER TO ARCHITECT'S CONSTRUCTION DRAWINGS FOR FINAL SETTING OUT OF LIGHTING EQUIPMENT.

Rev.	Date	By	Notes
01	31/05/16	TJ	Stage 3 update
00	29/02/16	TJ	Stage 3 update

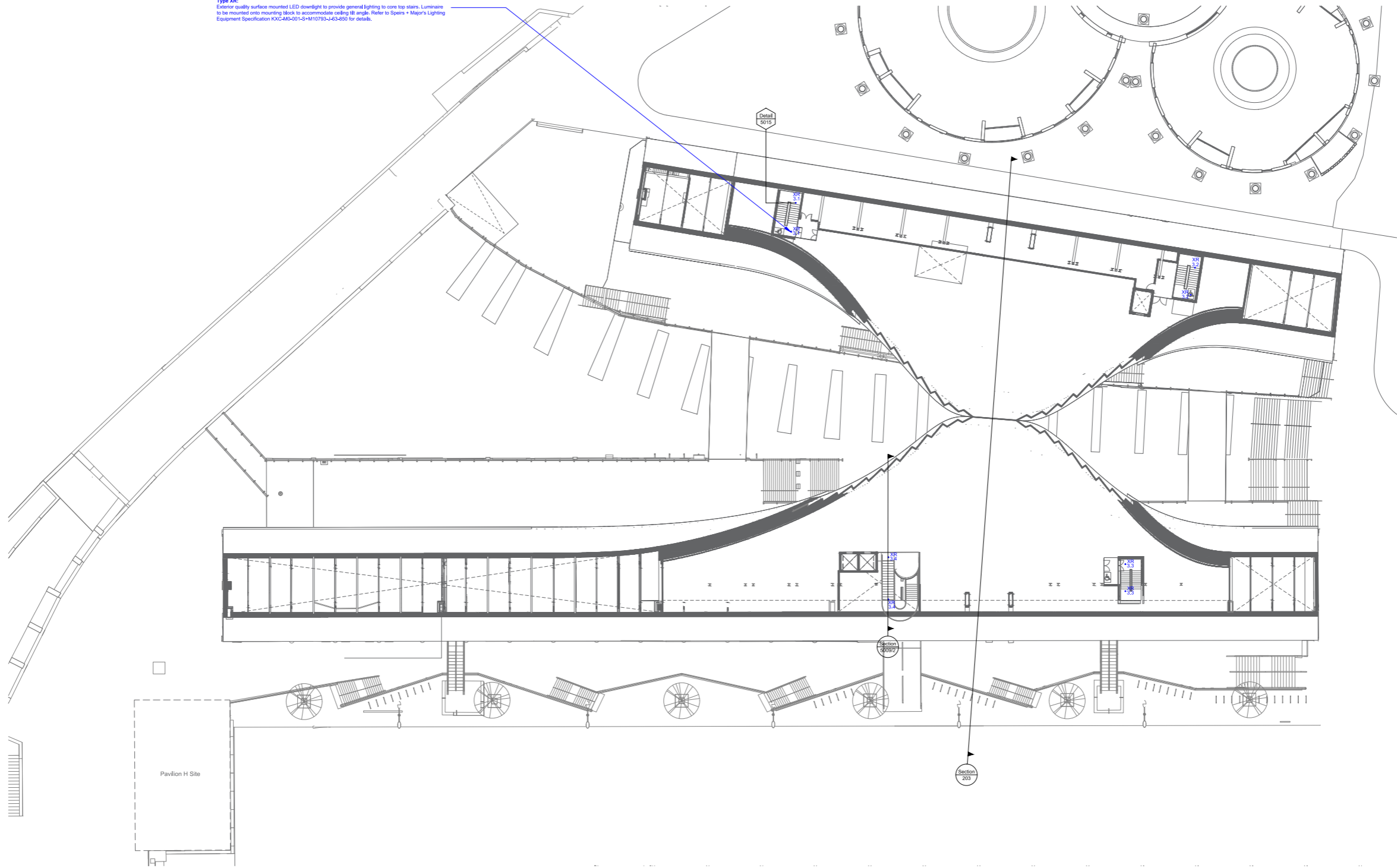
Project:  
Coal Drops Yard, King's Cross  
London, UK

Drawing:  
Void Level  
High Level Lighting Arrangement

Drawing Number: KXC-M0-001-S-M10793-J-63-GF002 Rev. 01  
Scale: 1:200 IBO:AO



**Type XR:**  
 Exterior quality surface mounted LED downlight to provide general lighting to core top stairs. Luminaire to be mounted onto mounting block to accommodate ceiling tilt angle. Refer to Speirs + Major's Lighting Equipment Specification KXC-MO-001-S-M10793-J43-850 for details.



**Notes:**  
 Do not scale off this drawing.  
 All drawings to be read in conjunction with all other relevant documents, including drawings and specifications.  
 All works to be carried out in accordance with such Standards, Building and IEE regulations, mandatory and statutory regulations and codes of practice as are deemed to apply in the relevant country or state.  
 Refer to Speirs+Major Lighting Designer's Risk Assessment for associated risks under the construction (Design and Management) Regulations (where applicable).

**Symbol Notes (where used):**  
 Symbols indicate positions of luminaires and other equipment.  
 The alphanumeric reference beside each symbol refers to luminaire type - see relevant Speirs+Major Lighting Equipment Specification.  
 The numeric code beside each symbol refers to a logical control channel reference (NOT the same as a physical wiring circuit). For details of logical channels see relevant Speirs+Major Control Channel Schedule. For details of wiring circuits, etc. see relevant engineers' drawings.

**Copyright:**  
 © Speirs and Major Associates, date as below. Under UK law, all rights described in Chapter 4 of the Copyrights Designs and Patents Act 1988 have been generally asserted.

**IMPORTANT:**  
 THIS DRAWING IS NOT TO BE ISSUED FOR TENDER OR CONSTRUCTION, IF THIS DRAWING IS ISSUED TO CONTRACTORS, IT IS FOR INFORMATION ONLY. ARCHITECTS' AND ENGINEERS' DRAWINGS MUST BE USED AS THE BASIS FOR TENDER AND CONSTRUCTION.

Pavilion H Site

Section 303

Rev.	Date	By	Notes
00	29/02/16	TJ	Stage 3 update

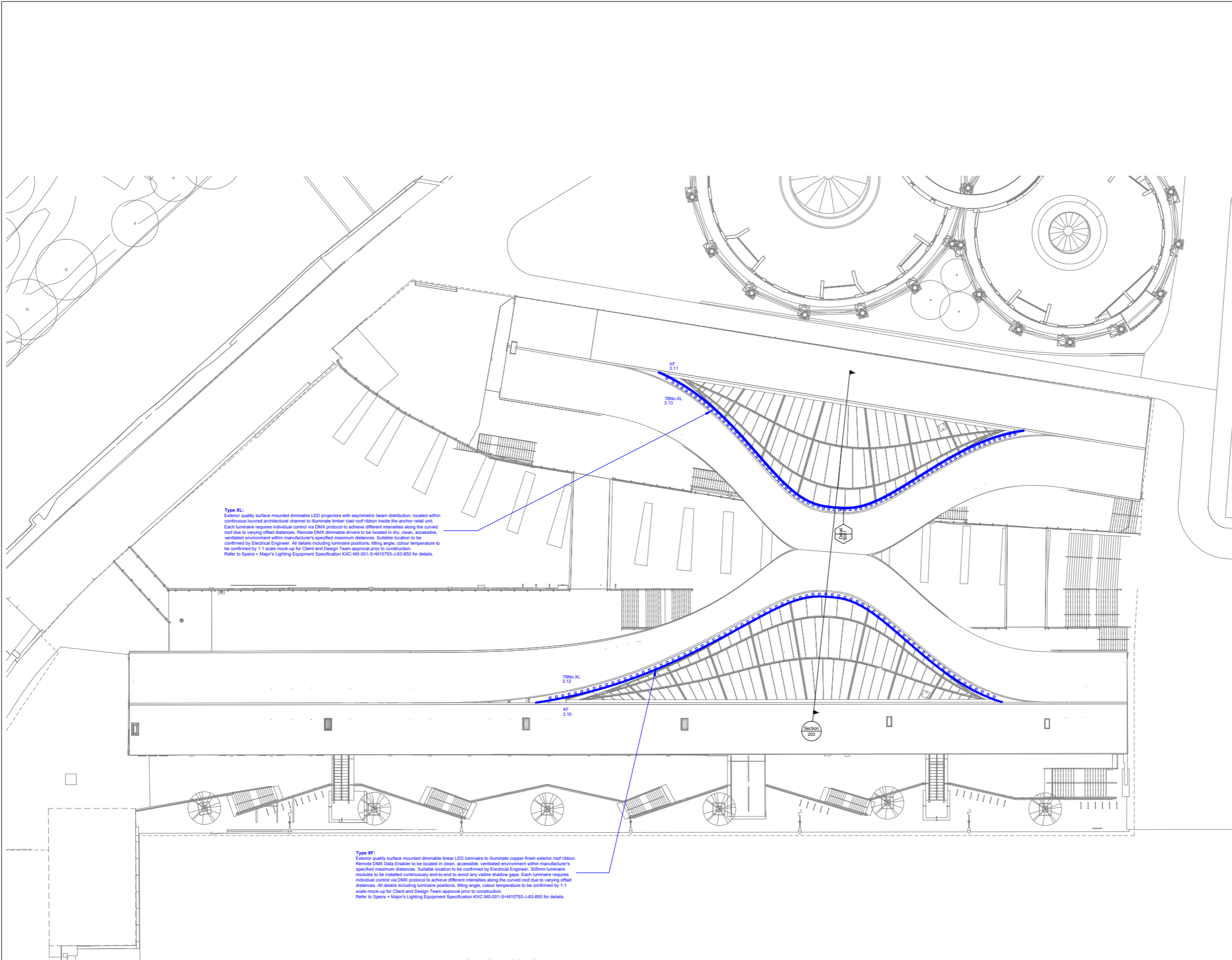
Project:  
 Coal Drops Yard, King's Cross  
 London, UK

Drawing:  
 Upper Level  
 High Level Lighting Arrangement

Drawing Number: KXC-MO-001-S-M10793-J43-01002 Rev. 00  
 Scale: 1:200 BO:AO

NOTE:  
 ALL WIRING, CONDUITS, CONTAINMENT ROUTES ETC. TO ELECTRICAL ENGINEER'S DRAWINGS, DETAILS AND SPECIFICATION.  
 ALL ASSOCIATED FIXINGS, MOUNTING AND BRACKETRY TO ARCHITECT'S DRAWINGS, DETAILS AND SPECIFICATION.  
 REFER TO ARCHITECT'S CONSTRUCTION DRAWINGS FOR FINAL SETTING OUT OF LIGHTING EQUIPMENT.





**Type XL:**  
 Exterior quality surface mounted dimmable LED projectors with asymmetric beam distribution, located within continuous louvred architectural channel to illuminate timber clad roof ribbon inside the anchor steel unit. Each luminaire requires individual control via DMX protocol to achieve different intensities along the curved roof due to varying offset distances. Remote DMX dimmable drivers to be located in dry, clean, accessible, ventilated environment within manufacturer's specified maximum distances. Suitable location to be confirmed by Electrical Engineer. All details including luminaire positions, tilting angle, colour temperature to be confirmed by 1:1 scale mock-up for Client and Design Team approval prior to construction. Refer to Speirs + Major's Lighting Equipment Specification KXC-MD-001-S-M10793-J-63-850 for details.

**Type XF:**  
 Exterior quality surface mounted dimmable linear LED luminaire to illuminate copper finish exterior roof ribbon. Remote DMX Data Enabler to be located in clean, accessible, ventilated environment within manufacturer's specified maximum distances. Suitable location to be confirmed by Electrical Engineer. 305mm luminaire modules to be installed continuously end-to-end to avoid any visible shadow gaps. Each luminaire requires individual control via DMX protocol to achieve different intensities along the curved roof due to varying offset distances. All details including luminaire positions, tilting angle, colour temperature to be confirmed by 1:1 scale mock-up for Client and Design Team approval prior to construction. Refer to Speirs + Major's Lighting Equipment Specification KXC-MD-001-S-M10793-J-63-850 for details.

**Notes:**  
 Do not scale off this drawing.  
 All drawings to be read in conjunction with all other relevant documents, including drawings and specifications.  
 All works to be carried out in accordance with such Standards, Building and IEE regulations, mandatory and statutory regulations and codes of practice as are deemed to apply in the relevant country or state.  
 Refer to Speirs+Major Lighting Designer's Risk Assessment for associated risks under the construction (Design and Management) Regulations (where applicable).

**Symbol Notes (where used):**  
 Symbols indicate positions of luminaires and other equipment.  
 The alphanumeric reference beside each symbol refers to luminaire type - see relevant Speirs+Major Lighting Equipment Specification.  
 The numeric code beside each symbol refers to a logical control channel reference (NOT the same as a physical wiring circuit). For details of logical channels see relevant Speirs+Major Control Channel Schedule. For details of wiring circuits, etc. see relevant engineers' drawings.

**Copyright:**  
 © Speirs and Major Associates, date as below. Under UK law, all rights described in Chapter 4 of the Copyrights Designs and Patents Act 1988 have been generally asserted.

**IMPORTANT:**  
 THIS DRAWING IS NOT TO BE ISSUED FOR TENDER OR CONSTRUCTION. IF THIS DRAWING IS ISSUED TO CONTRACTORS, IT IS FOR INFORMATION ONLY. ARCHITECTS' AND ENGINEERS' DRAWINGS MUST BE USED AS THE BASIS FOR TENDER AND CONSTRUCTION.

02	07/10/15	HT	Stage 3 issue
01	03/09/15	TJ	General revision
00	15/06/15	SC	Preliminary DstB- For information only

Rev.	Date	By	Notes
Project: Coal Drops Yard, King's Cross London, UK			
Drawing: Top New Roof General Lighting Arrangement			

Drawing Number: KXC-MD-001-S-M10793-J-63-102 Rev. 02  
 Scale: 1:200 ISO:A0



**NOTE:**  
 ALL WIRING, CONDUITS, CONTAINMENT ROUTES ETC. TO ELECTRICAL ENGINEERS DRAWINGS, DETAILS AND SPECIFICATION.  
 ALL ASSOCIATED FIXINGS, MOUNTING AND BRACKETRY TO ARCHITECT'S DRAWINGS, DETAILS AND SPECIFICATION.  
 REFER TO ARCHITECT'S CONSTRUCTION DRAWINGS FOR FINAL SETTING OUT OF LIGHTING EQUIPMENT.