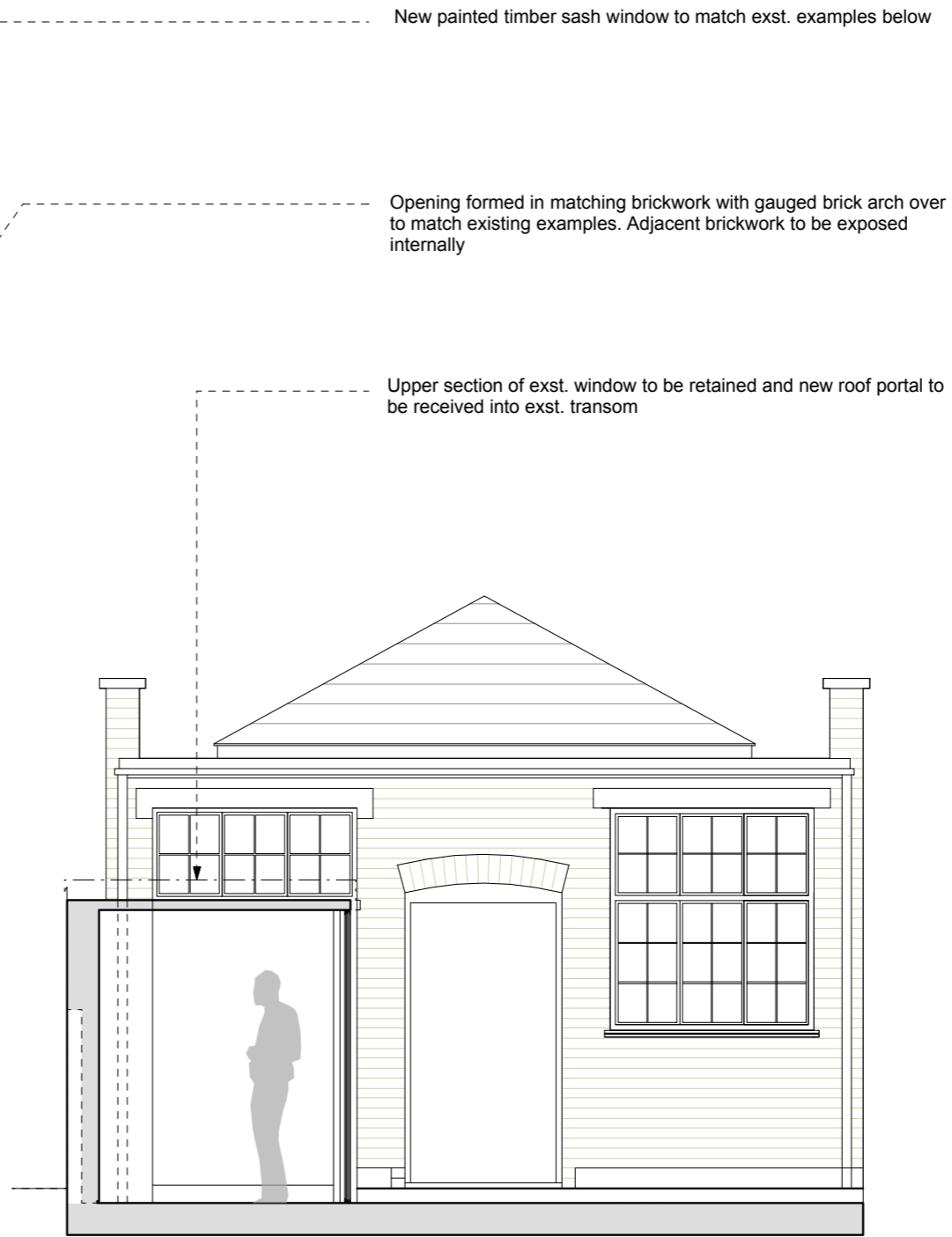




Section BB

Party garden wall to be raised up approx. 900mm in matching brickwork



Section CC

New painted timber sash window to match exst. examples below

Opening formed in matching brickwork with gauged brick arch over to match existing examples. Adjacent brickwork to be exposed internally

Upper section of exst. window to be retained and new roof portal to be received into exst. transom

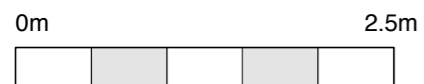
General Notes
Do not scale from this drawing
All dimensions to be verified on site
To be read in conjunction with all relevant documents
In the event of discrepancy notify the Architect immediately
This document is copyright of Hugh Cullum Architects Ltd

Issue Status
SK Sketch E Existing Condition
D Design P Permissions
T Tender C Contract

■ New Construction
■ Demolished Construction

Note
All existing UPVC windows to be replaced with painted timber sash window to similar pattern

(_): Issued for planning application (12.04.17/GW)
Revision: Information (date/drawn by/checked by)



AS PROPOSED _ Sections BB & CC

HUGH CULLUM ARCHITECTS LTD 16 New End Square
Bloomsbury Design
61b Judd Street Proposed
London WC1H 9QT Sections BB & CC
t 020 7383 7647 1:50@A3 October 2016
f 020 7387 7645
mail@hughcullum.com NES16-P005(_)