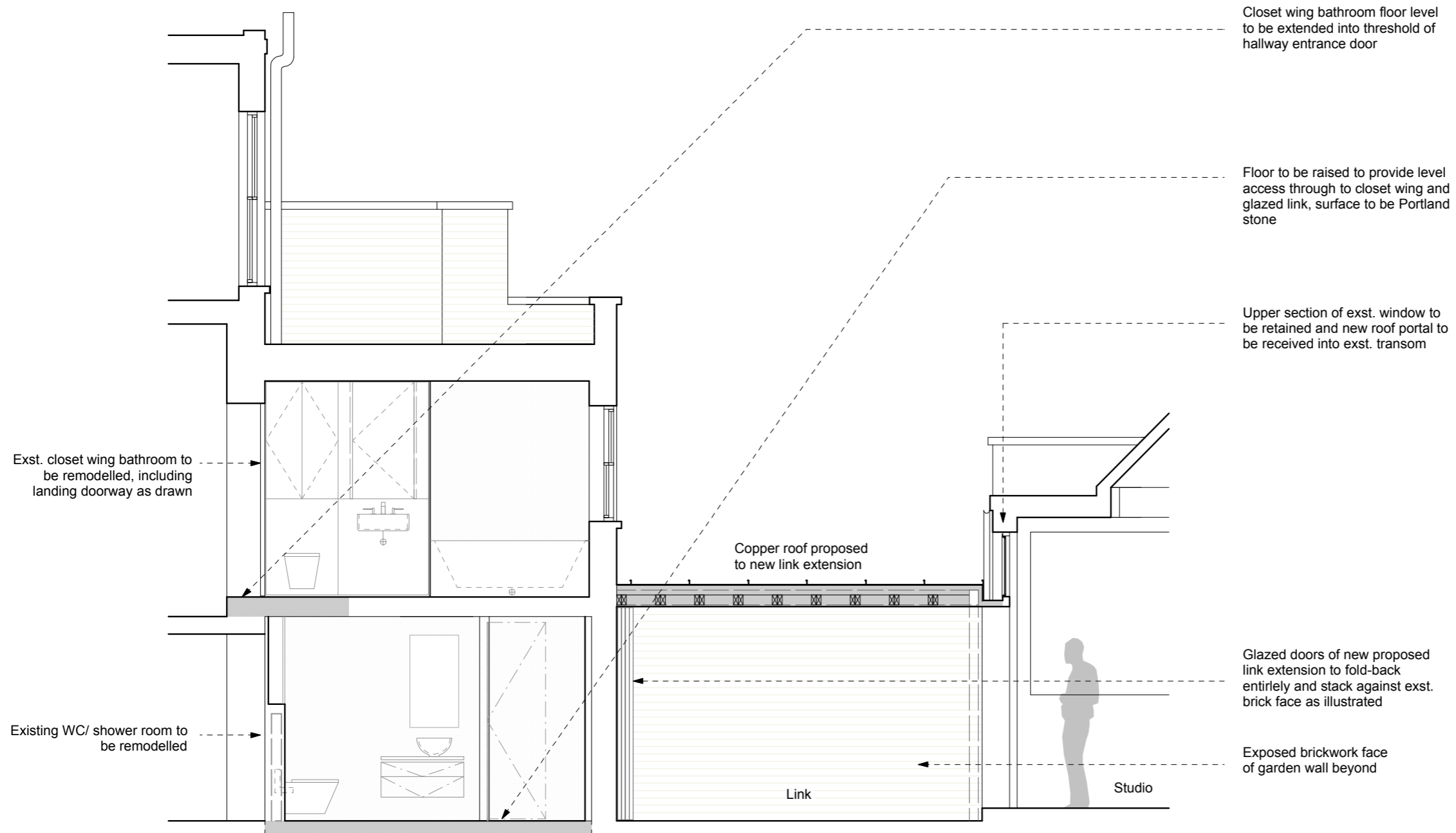


**General Notes**  
 Do not scale from this drawing  
 All dimensions to be verified on site  
 To be read in conjunction with all relevant documents  
 In the event of discrepancy notify the Architect immediately  
 This document is copyright of Hugh Cullum Architects Ltd

<b>Issue Status</b>		
SK	Sketch	E Existing Condition
D	Design	P Permissions
T	Tender	C Contract

- New Construction
- Demolished Construction

**Note**  
 All existing UPVC windows to be replaced with painted timber sash window to similar pattern



(\_): Issued for planning application (12.04.17/GW)  
 Revision: Information (date/drawn by/checked by)



**AS PROPOSED** \_ Section DD

**HUGH CULLUM ARCHITECTS LTD** 16 New End Square  
 Bloomsbury Design  
 61b Judd Street Proposed  
 London WC1H 9QT Section DD  
 t 020 7383 7647 1:50@A3 October 2016  
 f 020 7387 7645  
 mail@hughcullum.com NES16-P006(\_)